



ARGOGOLD

Projects with potential
for economic viability

July 2017

CSE: ARQ



Forward Looking Statements

This presentation may contain forward-looking statements that involve a number of risks and uncertainties, including statements regarding the outlook for the Company's business and operational results. By nature, these risks and uncertainties could cause actual results to differ materially from what has been indicated. Factors that could cause actual results to differ materially from any forward-looking statement include, but are not limited to failure to establish estimated resources and reserves, the grade and recovery of ore which is mined from estimates, capital and operating costs varying significantly from estimates, delays or failure in obtaining governmental, environmental or other project approvals and other factors including those risks and uncertainties identified above. The Company undertakes no obligation to update publicly or otherwise revise any forward-looking information as a result of new information, future results or other such factors that affect this information, except as required by law.



Ontario Gold Projects

High Grade

Potential for Economic Viability

100% owned by Argo Gold

Woco Gold Project

- Mineable gold grades and widths in historic drilling
- 1.5 kilometres south of the past-producing Uchi Mine

McVicar Lake Gold Project

- Located 30 km NW of the past-producing Golden Patricia Mine (600,000 ounces @ 14 grams per tonne gold)
- The Chellow Vein outcrop at the McVicar Lake Gold Project averages 28 grams per tonne gold over a 70 metre strike length

Wawa Gold Projects

Macassa Creek, Abbie Lake, Mishi Lake, South Wawa, Rockstar Gold

- Macassa Creek, South Wawa and Abbie Lake are located near Wesdome's operations
- Rockstar Gold is located near Richmond's Island Gold Mine
- South Wawa Gold is located near the Red Pine-Citibar Wawa Gold project
- All projects have both high-grade underground and low-grade open pit potential – particularly given their proximity to two gold mills

Hurdman Silver-Zinc Project

- Significant drill results include 23.6 metres of 12 g/t silver and 3% zinc

Argo Gold Capital Structure

Symbol	ARQ
Share Price	\$0.20
Common Shares	28,217,628
Warrants	1.2 M @ \$0.10 per share 0.060 M @ \$0.12 per share 1.3 M @ \$0.30 per share
Market Cap	~ \$6 million
52 Week Low	\$0.04
52 Week High	\$0.26



Board of Directors

Judy Baker

Judy Baker is the CEO and founder of Argo Gold. Ms. Baker was also the founder of Canada Lithium and Superior Copper. Judy Baker has 25 years of experience in the resource sector and capitals markets including equity analysis, fund management, and exploration and mining company activity.

Chris Irwin

Mr. Irwin is Legal Counsel and Corporate Secretary for Argo Gold. Mr. Irwin has 20 years of experience in securities and corporate/commercial law.

Alex Falconer

Mr. Falconer is also the CFO for Argo Gold. Mr. Falconer has 25 years of experience in financial and accounting services.

Bill Nielsen

Mr. Nielsen has 43 years of experience in mineral exploration and mine development. Mr. Nielsen is the past President and CEO of Kombat Copper and past VP Exploration for Crocodile Gold and Nevsun Resources.

Paul Olmsted

Mr. Olmsted is currently the CFO for Superior Gold Inc. Previously he served as the Senior Vice President of Corporate Development at IAMGOLD Corp. and was responsible for the company's M&A and divestiture program.

George Langdon

Mr. Langdon has 25 years of experience in exploration & development for oil & gas.

Strong Technical Team

Delio Tortosa, Geological Consultant

Mr. Tortosa is a geological consultant currently specializing in gold, copper, and uranium exploration, with a technical background in the application of geographic information systems and 3D modeling for the geosciences. He has over 30 years of experience, having worked both in the mining and mineral exploration industry, in government as a geoscientist with the Ontario Geological Survey, as Resident Geologist for the Wawa District, and in academia teaching GPS, GIS, and Remote Sensing at Lake Superior State University.

Bill Kerr, Geological Consultant

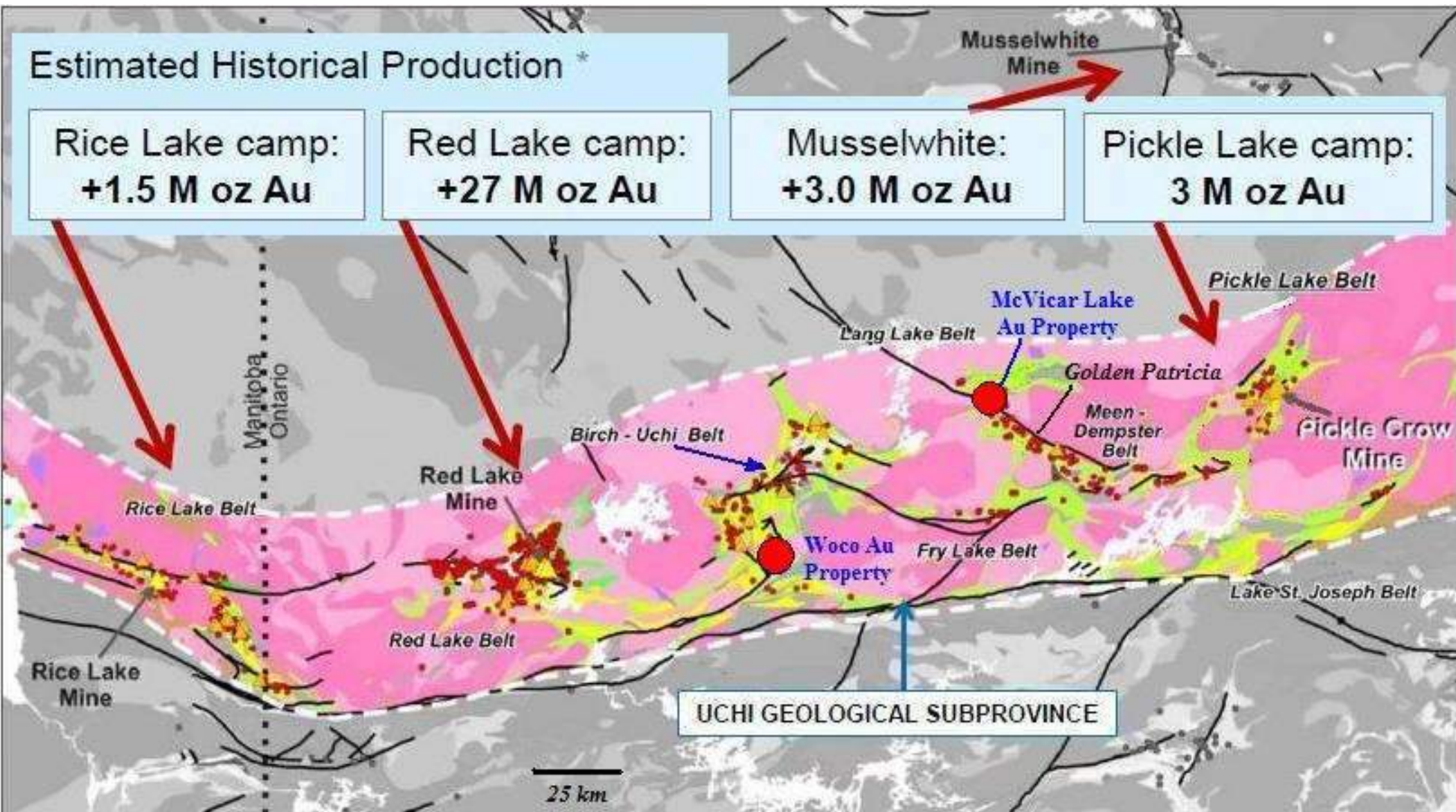
Bill Kerr is a geologist with over 40 years in the Canadian and international exploration and mining industry. He was directly responsible for discovery of two of the world's four highest grade uranium deposits, (Phoenix and Midwest A) and was a geophysical contractor 40 years ago for the surveys that defined the conductors that became the other two (McArthur River and Cigar Lake). He was QP for the mining of all the McClean Lake deposits, by operator AREVA. He has spent many years in Ontario, and was exploration manager for Dome Mines for the Red Lake and Timmins offices. During that time, he was involved, in varying degrees, with discovery and delineation of economically mineable gold deposits at Dona Lake, Detour Lake, and Musselwhite.

Dr. Jay Hodgson, Advisor

Dr. Hodgson is a Research Exploration Geologist with over 40 years of global experience in base metal and precious metal exploration. He is a graduate of McGill University in Montreal and received his PhD from the University of California at Berkeley. From 1972 to 1995, Dr. Hodgson was Professor of Economic Geology at Queen's University. From 1996 to 2006, Dr. Hodgson was Chief Geologist at Barrick Gold Corp. where he designed their worldwide exploration programs including several world-class gold deposits.

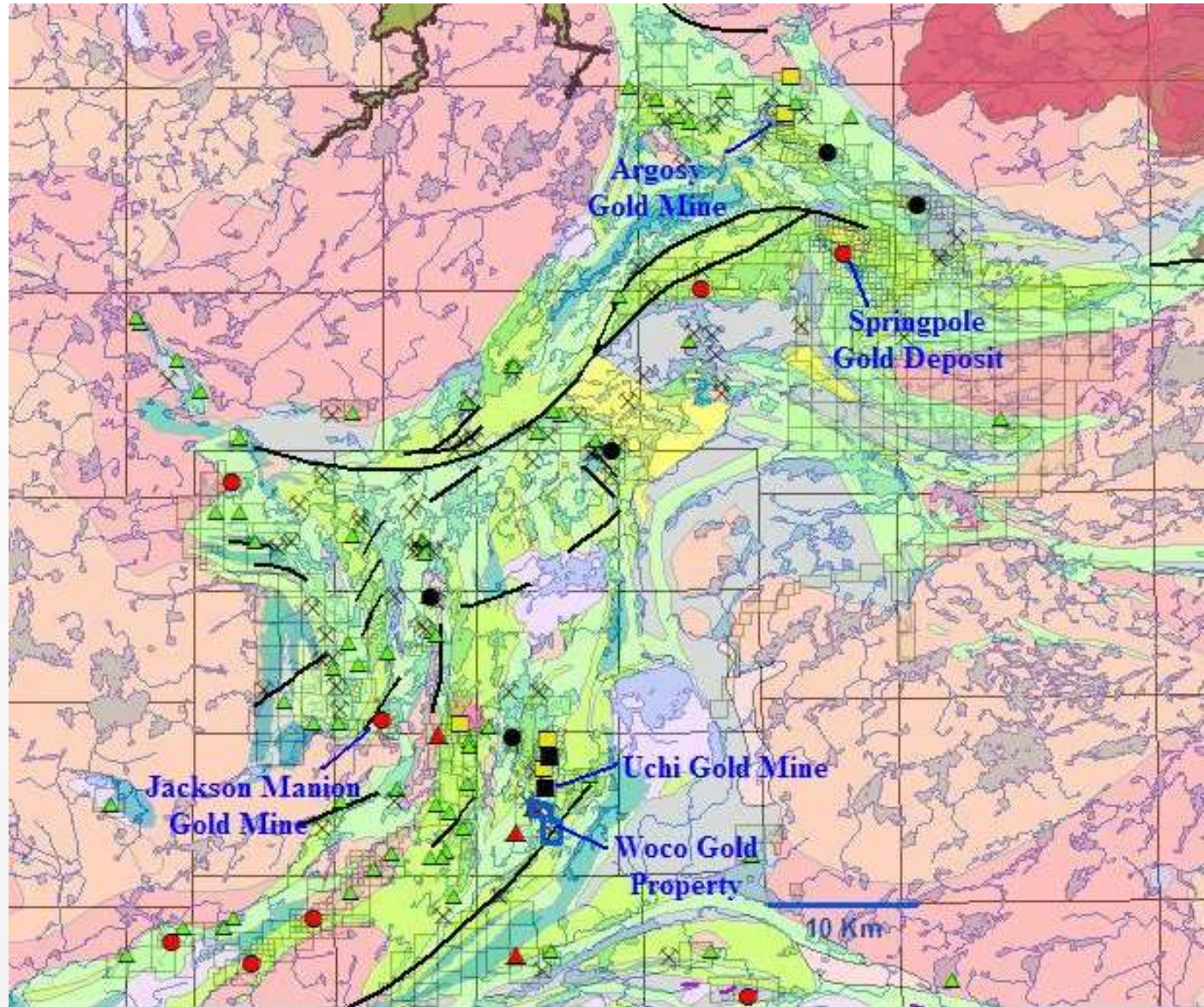


The Rice Lake – Pickle Lake Gold Belt



Woco Gold Project

- 60 kilometres East of Red Lake, Ontario
- 85 kilometres NE of Ear Falls, Ontario
- Located at the south end of the Birch-Uchi Greenstone Belt
- Proximal to the Uchi Deformation Zone
- The Birch-Uchi also hosts the multi-million ounce Springpole gold deposit
- 1.5 km south of the past-producing Uchi Mine
- 320 hectares of 20 mineral claim blocks
- Mineable gold grades and widths indicated by historic drilling



Woco Gold Project Drill Intercepts

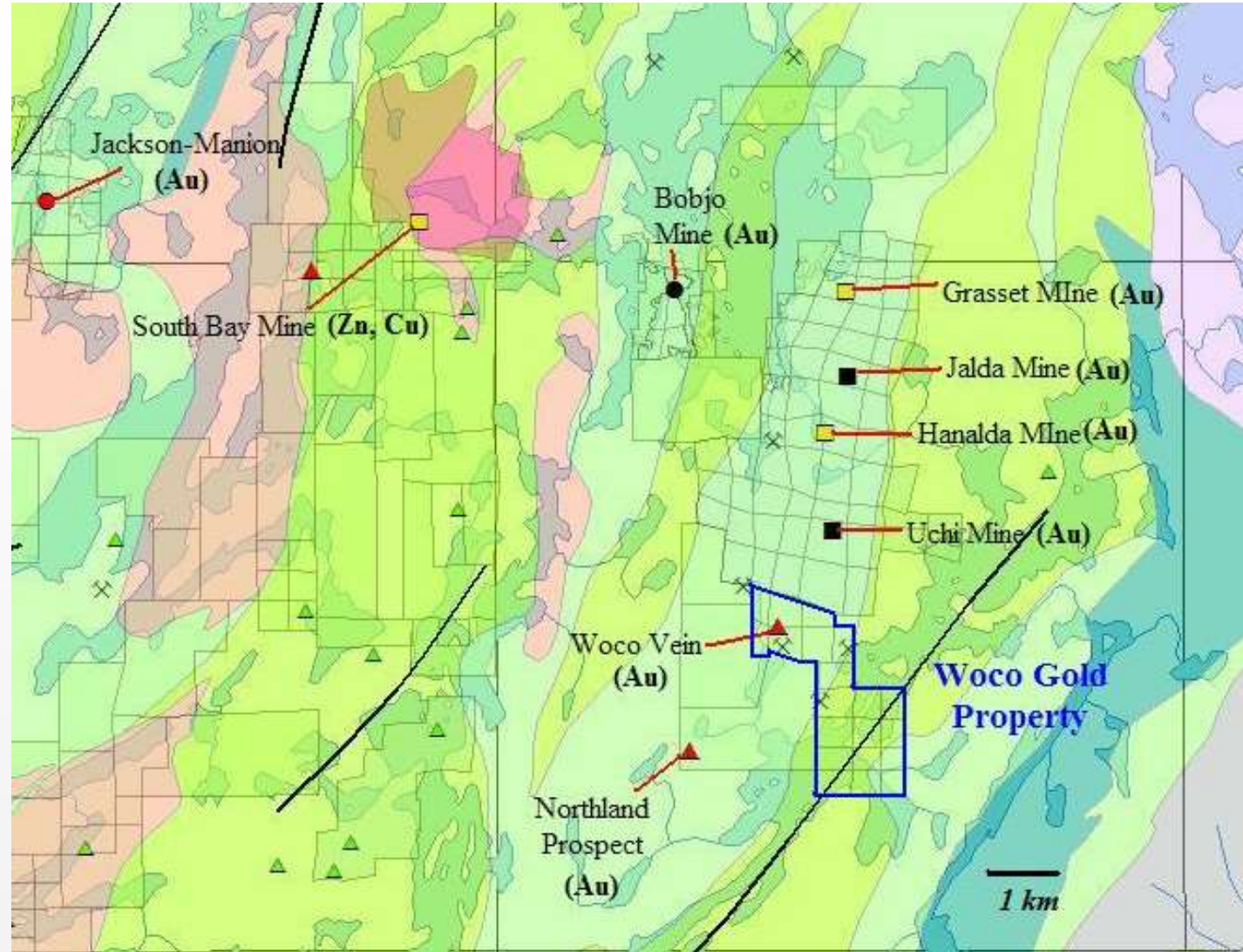
Rich “Woco” Vein drill intercepts of

- 1.64 oz/ton gold over 5.25 feet
- 1.89 oz./ton gold over 11.9 feet
- 0.65 oz/ton gold over 5.4 feet
- 0.39 oz/ton gold over 3.4 feet
- 0.445 oz/ton gold over 7.5 feet
- 0.4 oz/ton gold over 4.6 feet
- 1.83 oz./ton gold over 6 feet

Down-Plunge & Strike Extensions

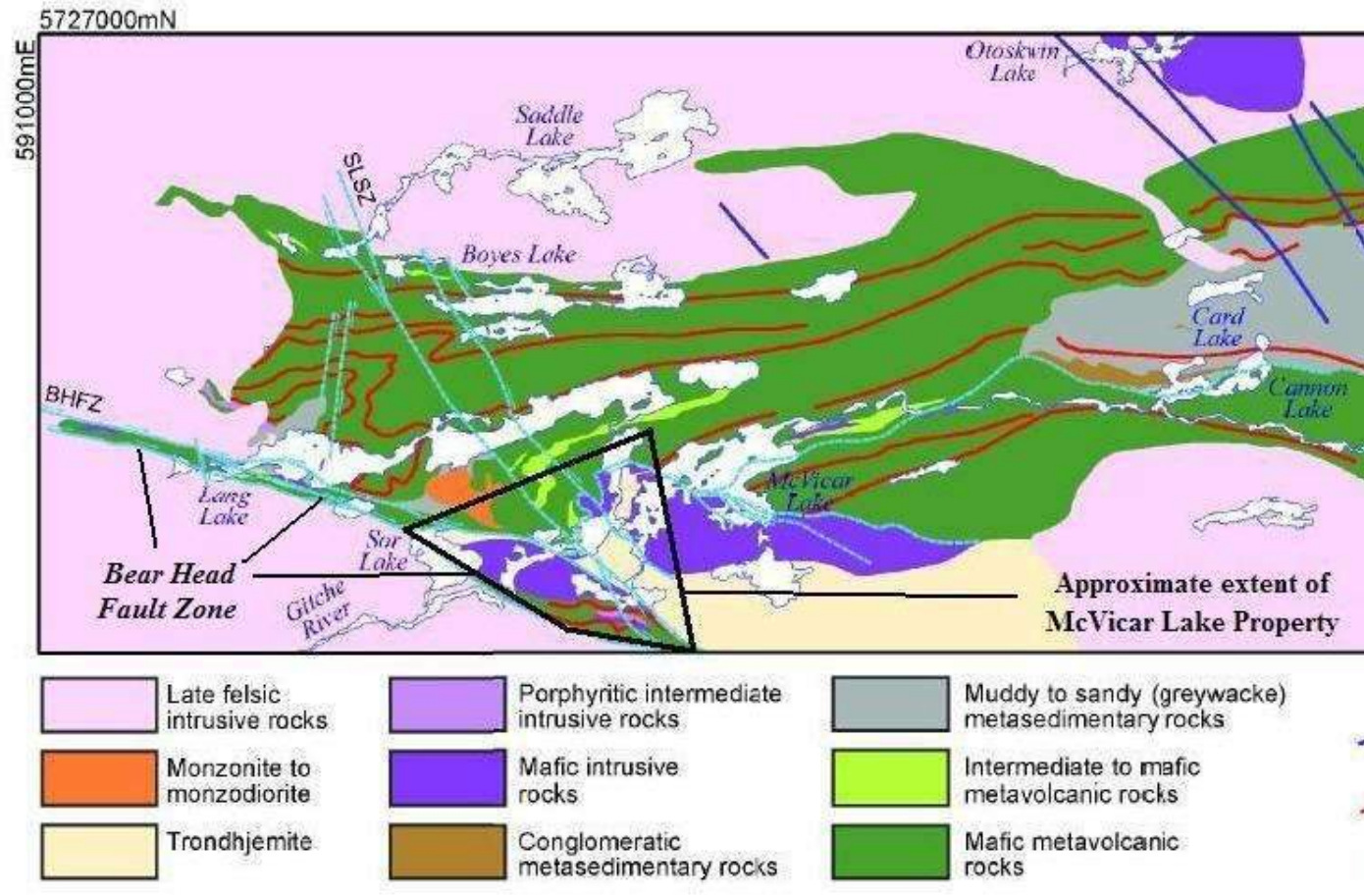
- 4.08 oz./ton gold over 6.9 feet
- 1.24 oz./ton gold over 5.6 feet

Detailed information in Argo Gold press release - November 22 2016

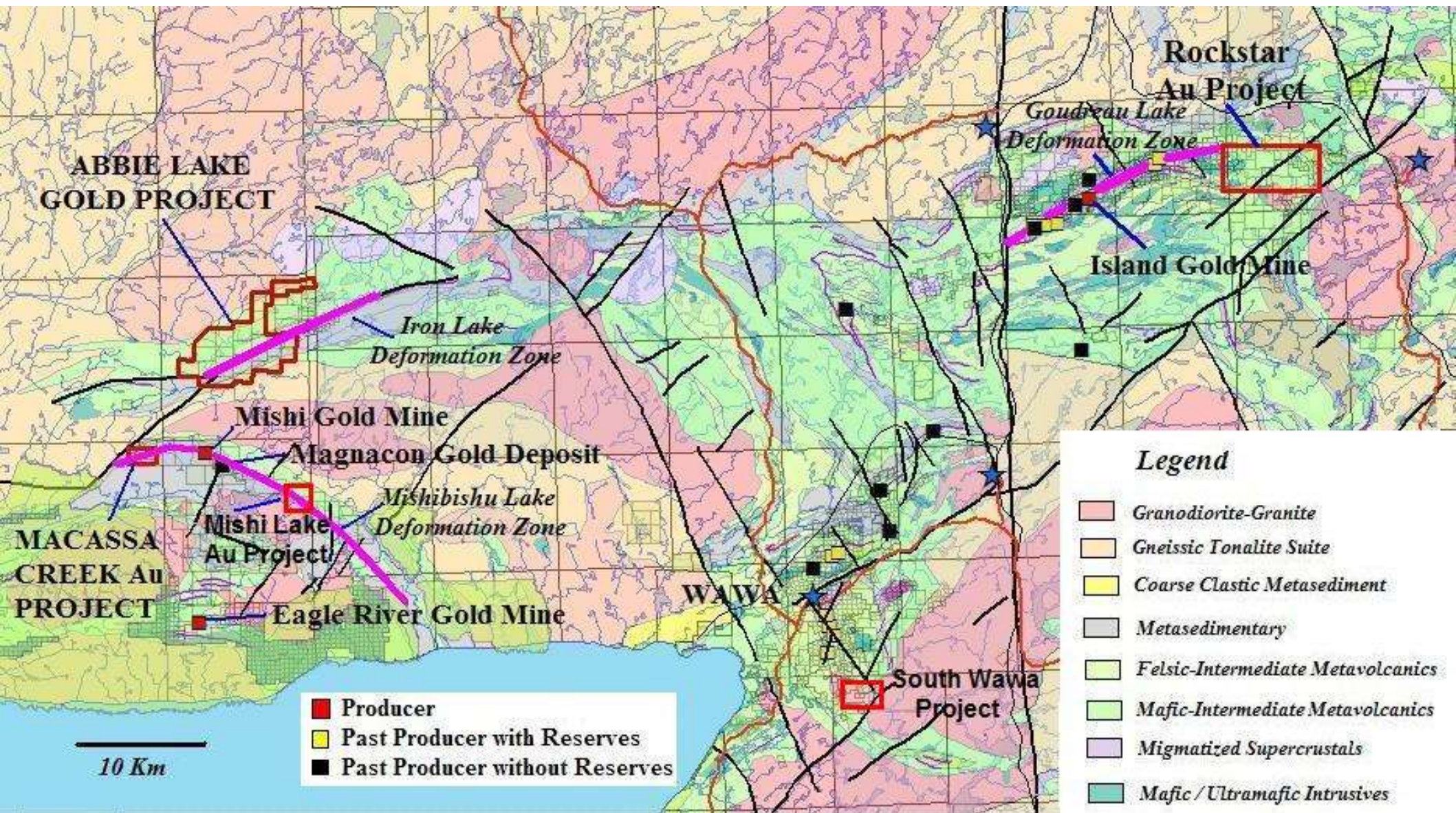


McVicar Lake Gold Project

- 80 kilometres West of Pickle Lake and 3 kilometres north of the Cat Lake First Nations winter road and power line
- 23 square kilometres of 9 mineral claim blocks in the Lang Lake Greenstone Belt
- The major crustal-scale Bear Head Fault Zone is located on the SW margin of the project
- The past-producing Golden Patricia Mine (600,000 ounces @ 14 g/t) is located 30 kilometres southeast of the McVicar Lake Gold Project
- The Chellow Vein outcrop at the McVicar Lake Gold Project averages 28 g/t gold over a 70 metre strike length on 2 metre channel sampling intervals
- Mineralization includes lode gold, epithermal and porphyry



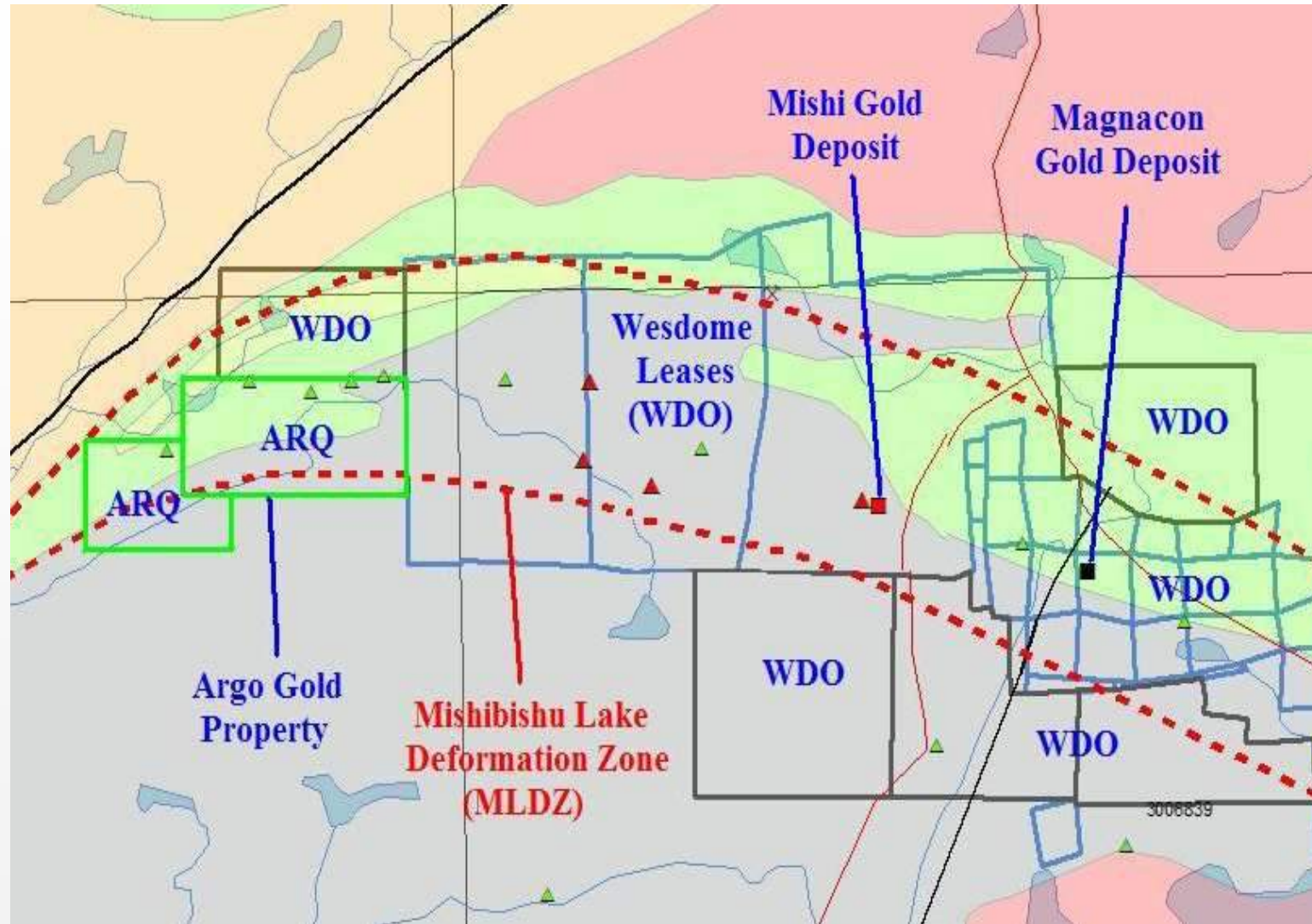
Mineral occurrences and alteration types, Lang Lake GB (modified after Magnus, 2014)



Argo Gold's Macassa Creek, Abbie Lake, Mishi Lake South Wawa and Rockstar Gold Projects

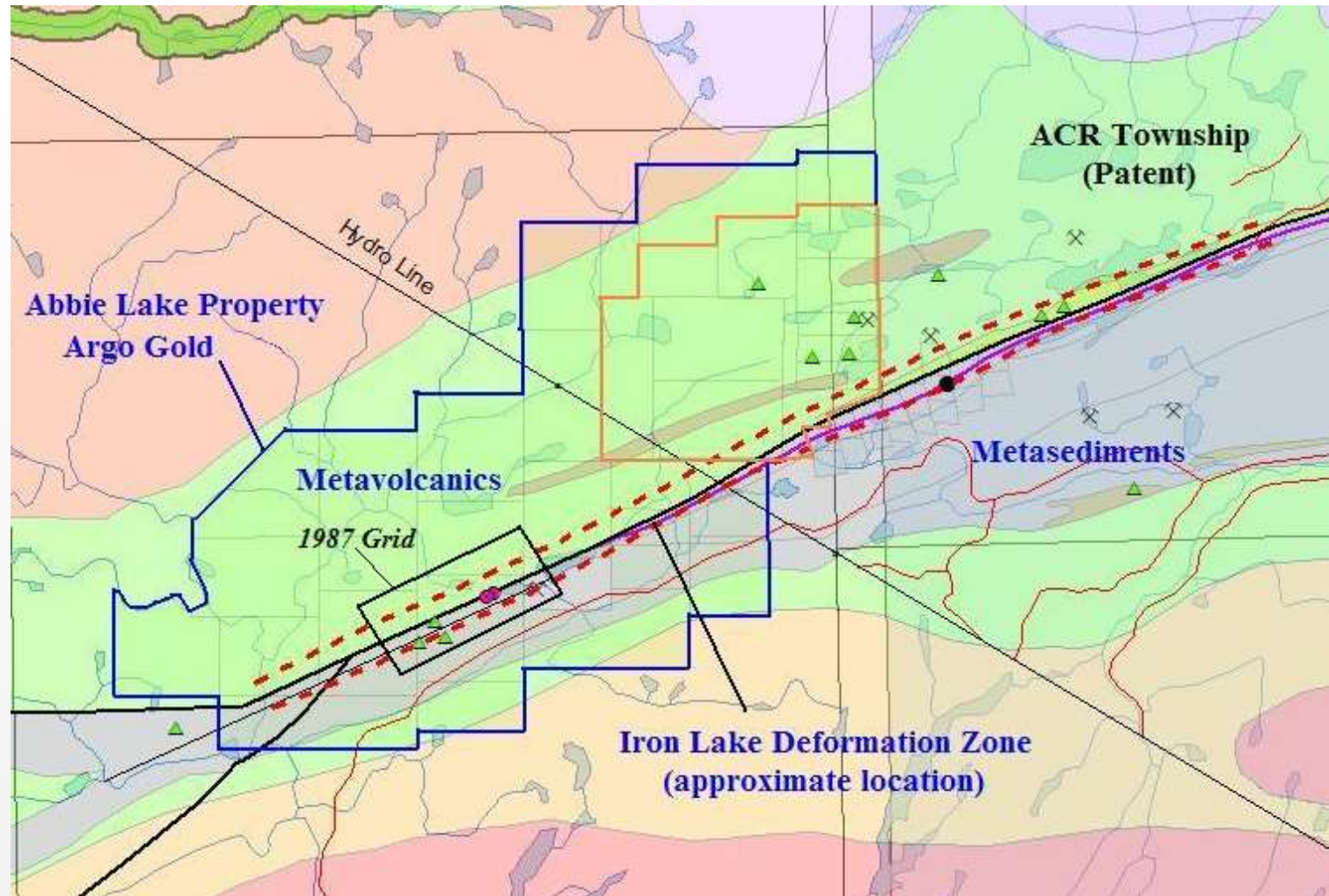
Wawa Area – Macassa Creek

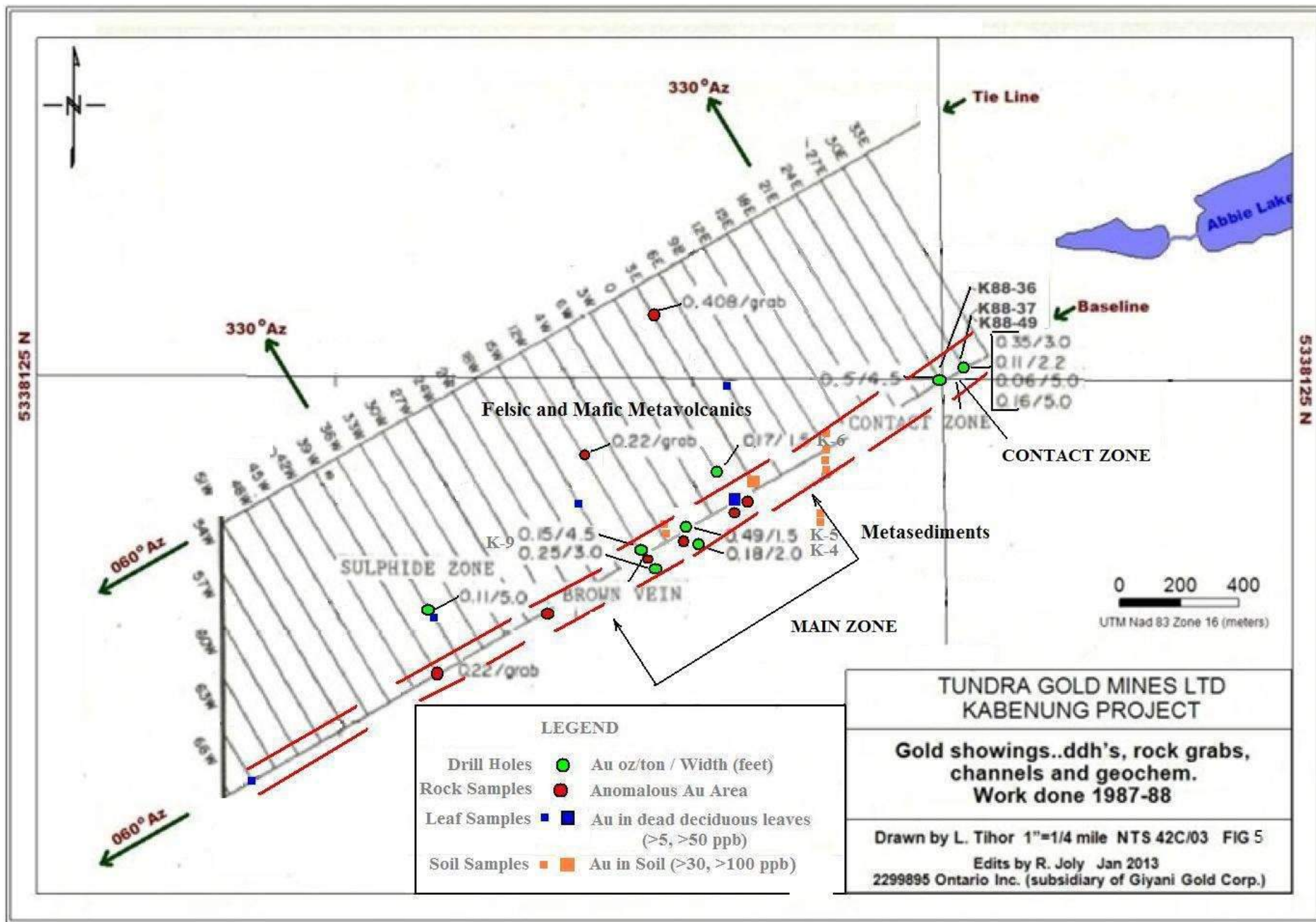
- 40 km West of Wawa, ON
- 208 hectares on the Mishibishi Deformation Zone west of Wesdome's Mishi Open Pit
- Wesdome has drilled west to the Macassa Creek boundary
- Gold mineralization occurs in quartz-bearing shear zones straddling the metavolcanic and metasedimentary contact
- Historic drilling indicates potential for both low-grade open pit surface mineralization and high-grade underground gold mineralization
- Detailed information in Argo Gold press release - November 7 2016



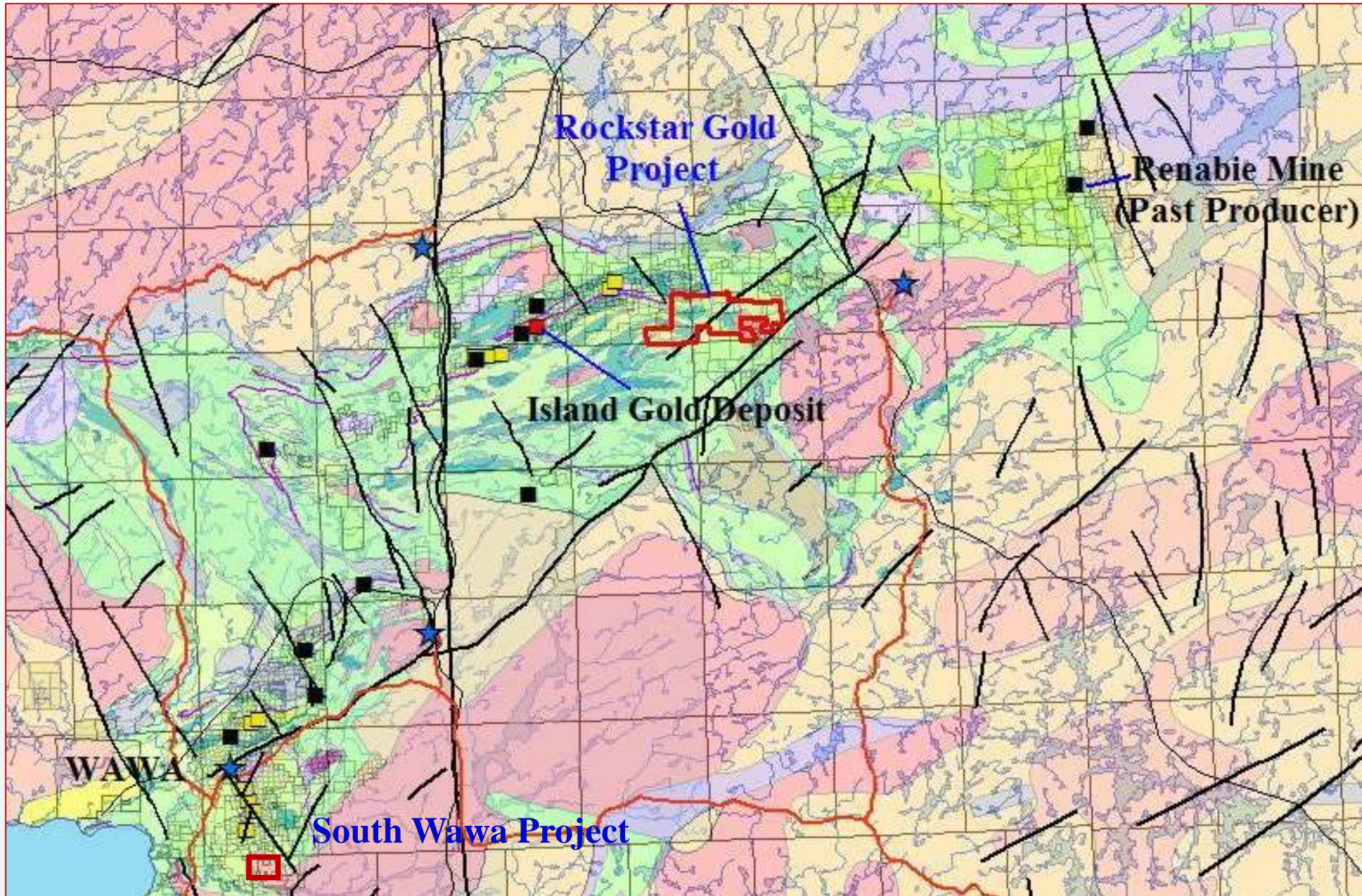
Wawa Area – Abbie Lake Gold

- 65 kilometres Northwest of Wawa, Ontario
- 45 square kilometres of mineral claims within the Iron Lake Greenstone Belt
- Significant low to moderate grade gold mineralization was identified by Tundra Gold Mines over strike length of ~ 5 kilometres
- Gold mineralization is closely associated with high strain zones at contacts
- Historic drilling indicates potential for both high-grade underground and low-grade open pit surface gold mineralization
- Detailed information in Argo Gold press release - November 7 2016



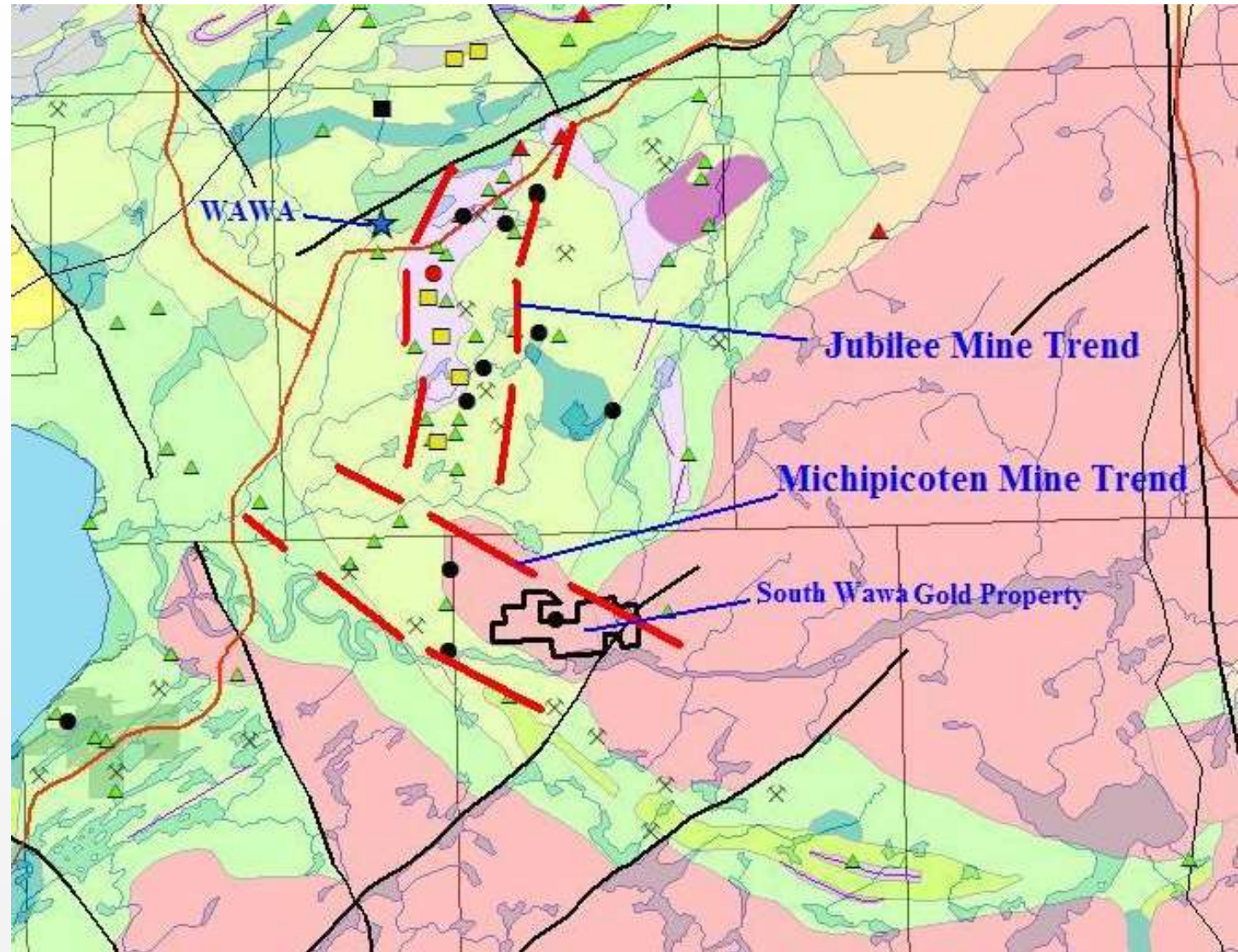


Michipicoten Greenstone Belt – South Wawa and Rockstar Gold Projects



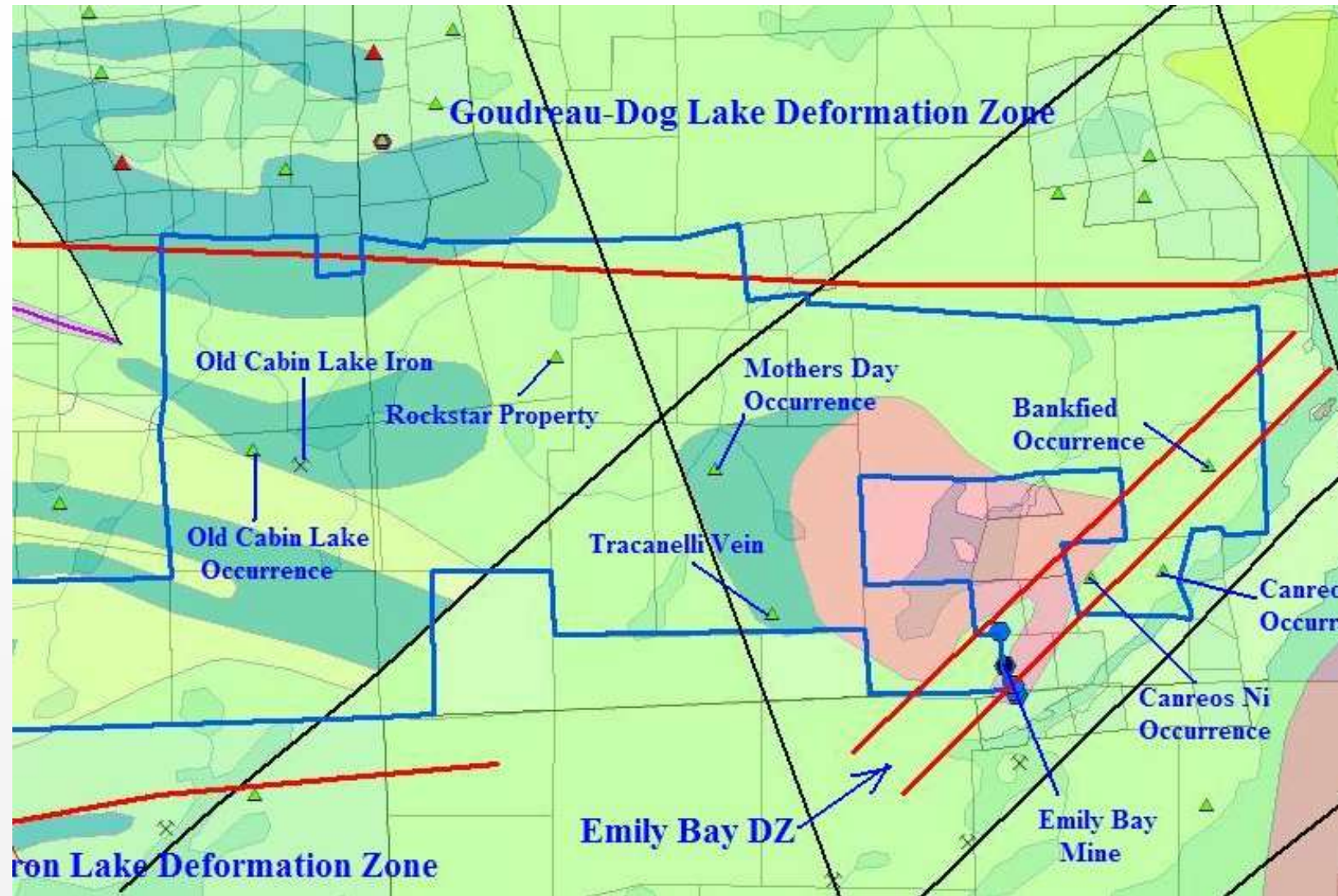
Wawa Area – South Wawa Gold Project

- 10 kilometres South of Wawa, Ontario
- 260 hectares on the Michipicoten Mine Trend
- Directly south of the Wawa Gold Project (Red Pine Expl. and Citibar)
- The Michipicoten Greenstone Belt producer is Richmond Mines' Island Gold Mine
- Michipicoten Greenstone Belt past gold producers include; Magino, Cline, Edwards and Renabie
- The Valentti Gold Vein averages 4 g/t gold over the 3.4 metre width and 60 metre length of the exposed vein. Channel samples include 15.4 g/t gold over 2.6 metres



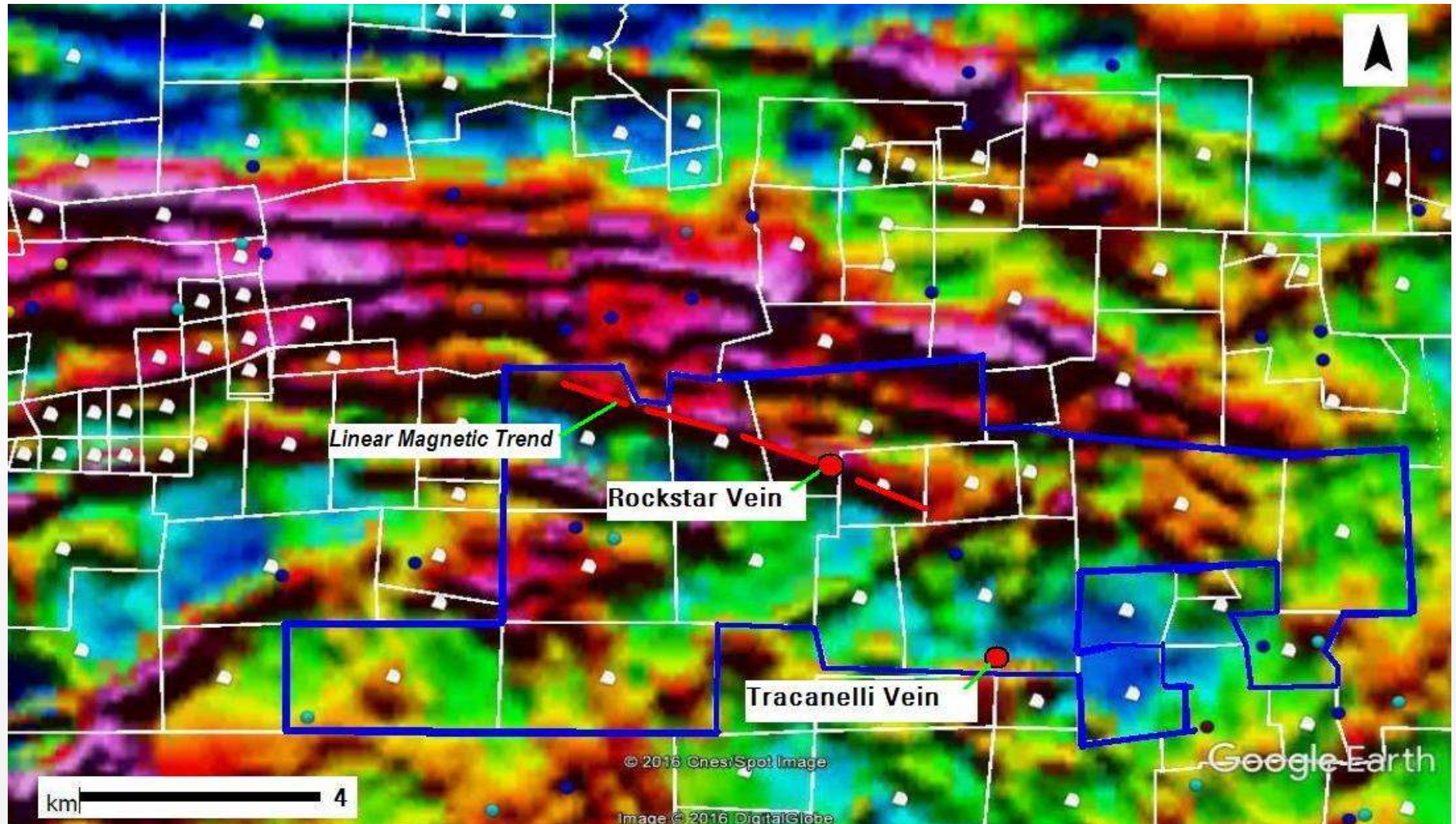
Wawa Area – Rockstar Gold Project

- 50 kilometres North of Wawa, Ontario
- 27 square kilometres of mineral claims east of Richmond Mines' Island Gold Mine
- Michipicoten Greenstone Belt past gold producers include; Magino, Cline, Edwards and Renabie
- Three deformation zones proximal to project area
- The Rockstar Gold Project includes six known areas of gold mineralization including the Rockstar and Tracanelli prospects

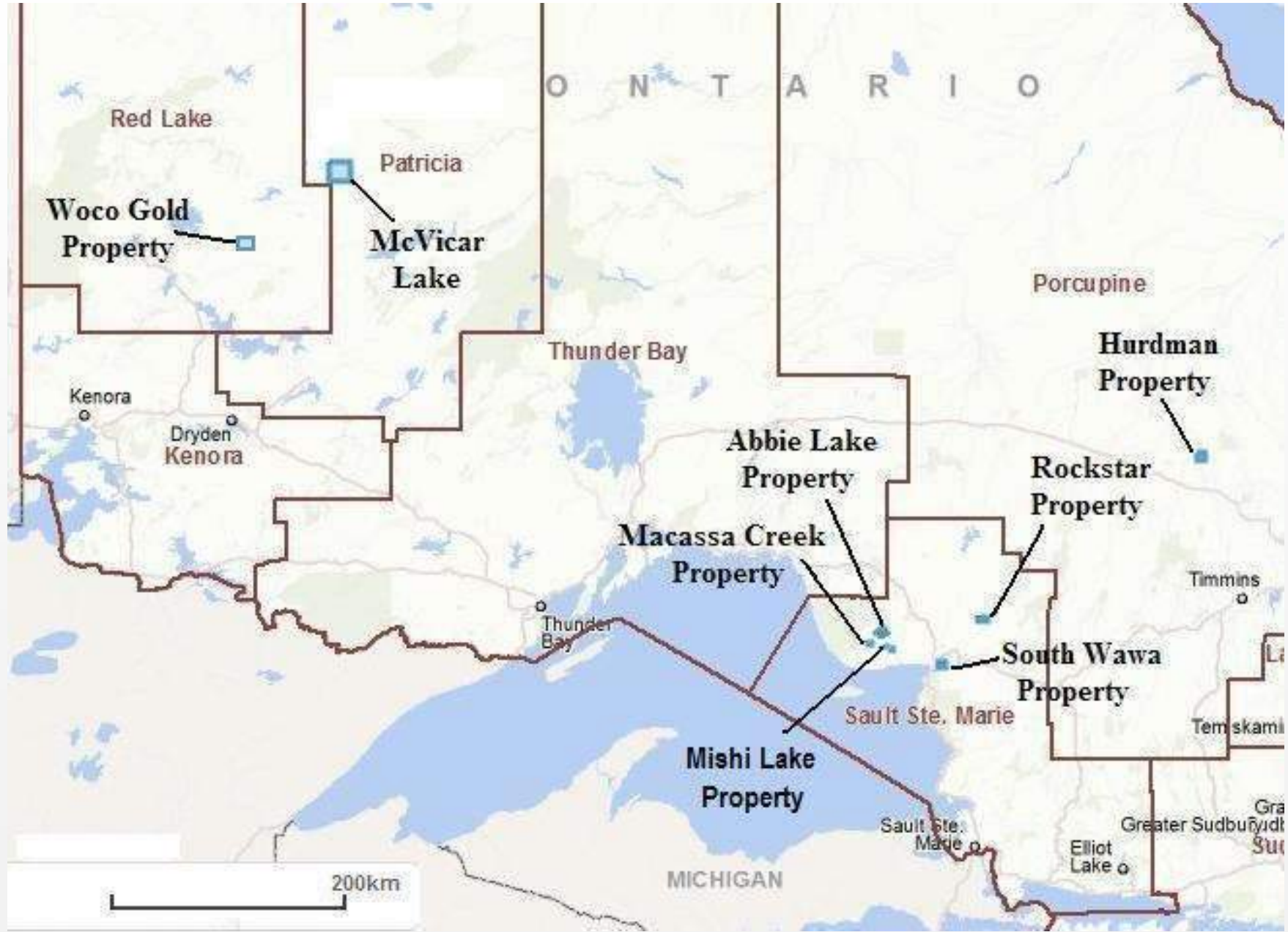


Wawa Area – Rockstar Gold Project – Total Magnetic Intensity

- Rockstar Vein demonstrated continuity and consistency in mineralization in the 2004 – 2005 drill program

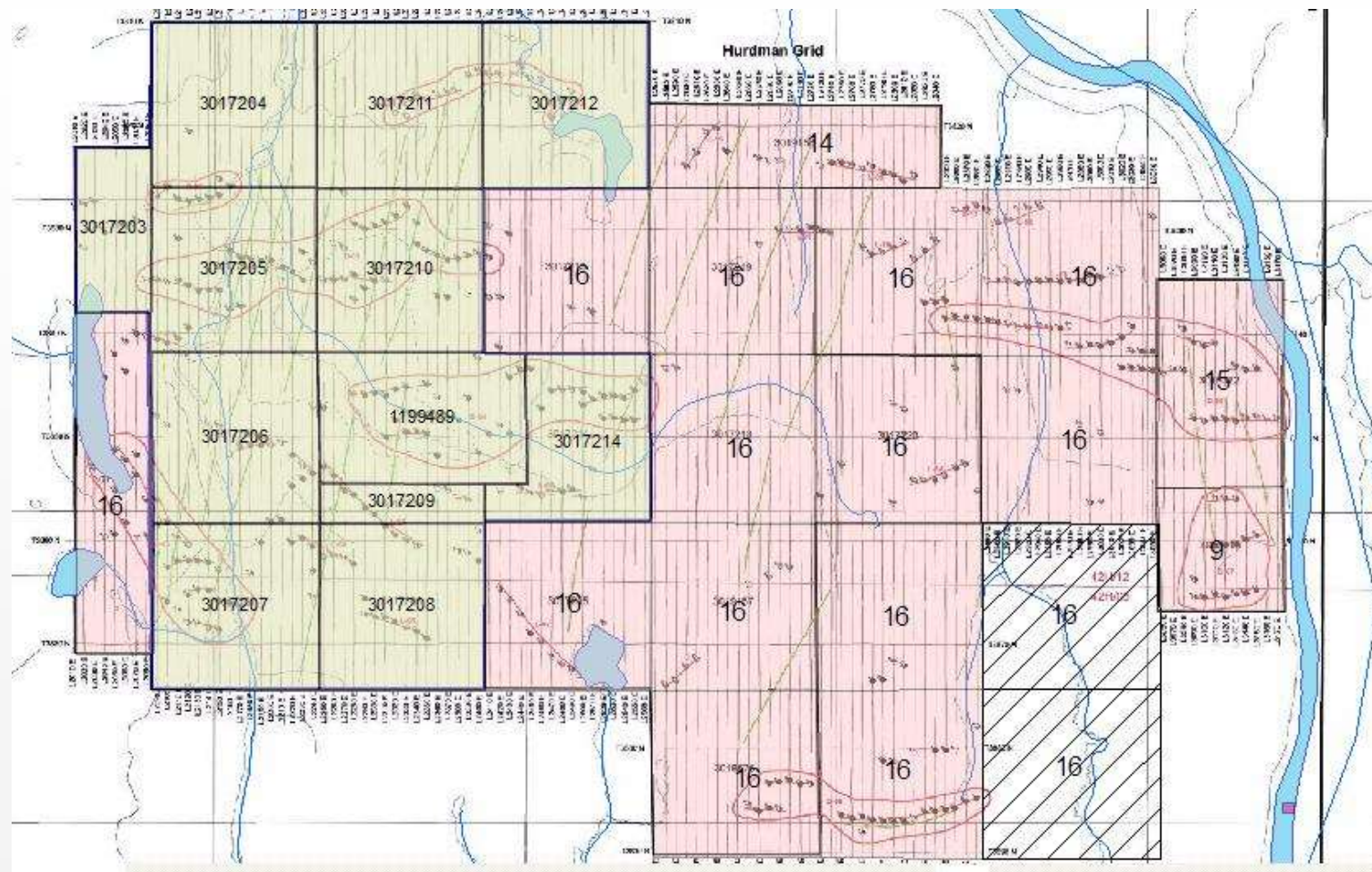


- Ontario High Grade Gold Projects
- 100% Owned
- Potential for Economic Viability
- Strong Team



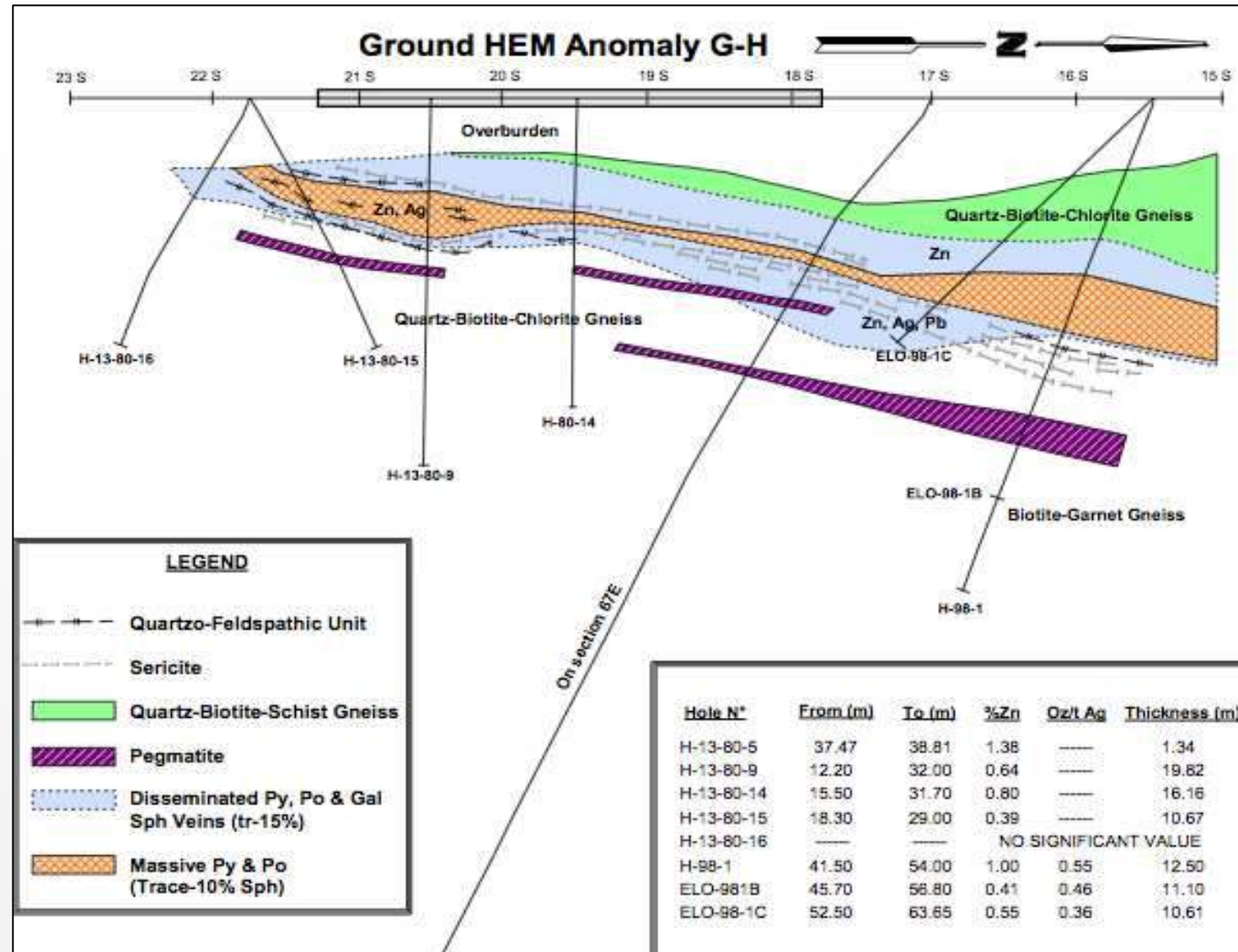
Hurdman Zinc-Silver Project

- 120 kilometres North of Timmins, ON
- Core claims of 2688 hectares and recently staked Strategic claims covering 4240 hectares
- The Hurdman Sulphide Zone mineralization is considered to be an Archean Sedex-type deposit
- The stratabound Zinc-Silver deposit occurs at the juncture of the Quetico Metasedimentary Belt and the Kapuskasing Structural Zone
- In addition to the Hurdman Sulphide Zone there are a significant number of surrounding drill targets



Hurdman Zinc-Silver Project

- Eloro identified the Zinc-Silver rich, semi-massive to massive Hurdman Sulphide Zone for 450 metres along strike, dipping 15 to 25 degrees north and within 150 metres of surface
- Drill widths varying from 1 to 38 metres and the mineralization remains open in all directions
- Significant drill results include 3% zinc and 12 g/t silver over a true width of 23.6 metres
- The shallow dip of the deposit is amenable to open pit
- Significant gold credits impact value per tonne



Key Points

- 1 Economic Viability**
Argo Gold's projects indicate potential economic viability in the context of current commodity prices

- 2 Strong Technical Team**
Technical ability to identify projects and explore in the context of economic viability

- 3 Capital Structure**
Small float and low market capitalization

- 4 Timing**
Exposure to improving gold, silver and zinc prices



Contact:

Judy Baker

(416) 786-7860

judybakertoronto@gmail.com

www.argogold.ca



ARGOGOLD

CSE: ARQ