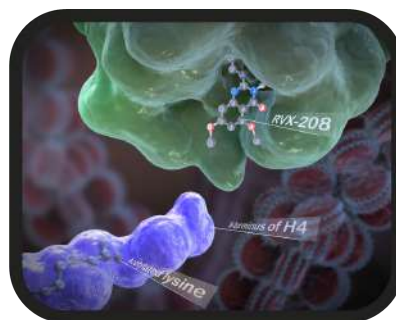
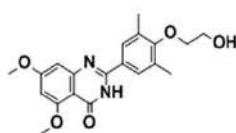
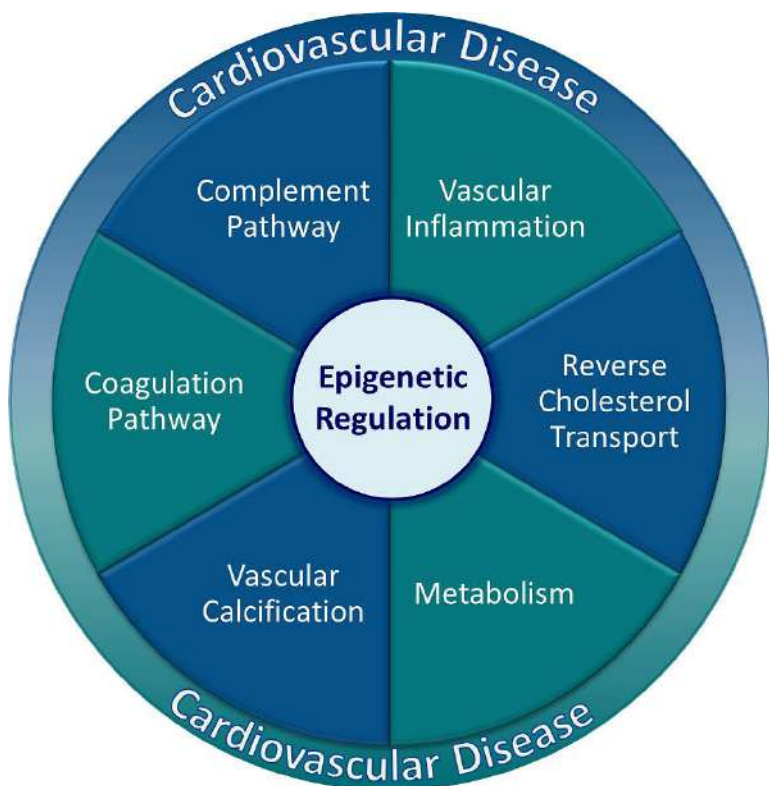


## RESVERLOGIX IS A LEADING BIOTECH COMPANY DEDICATED TO IMPROVING THE LIVES OF PATIENTS WITH HIGH-RISK CARDIOVASCULAR DISEASE, DIABETES MELLITUS AND CHRONIC KIDNEY DISEASE

Resverlogix is in a Phase 3 clinical trial "BETonMACE" with apabetalone (RVX-208), the first and only bromodomain and extra-terminal (BET) inhibitor selective for the second bromodomain (BD2) within the BET protein family. BET bromodomain inhibition is an epigenetic mechanism that can regulate disease-causing genes.



### MULTI-MODAL PATHWAY MECHANISM



Apabetalone provides a novel approach to **reduce Major Adverse Cardiac Events (MACE)** in patients with cardiovascular disease (CVD) and diabetes mellitus.

CVD is a multifactorial disease, at the core of which are many pathological processes, which are modulated by epigenetic gene regulation governed by BET proteins.

Apabetalone affects gene activity via epigenetic regulation, thereby **modulating several of these key biological pathways**, especially those involving a perturbed vasculature, such as CVD, diabetes mellitus, and chronic kidney disease (CKD).

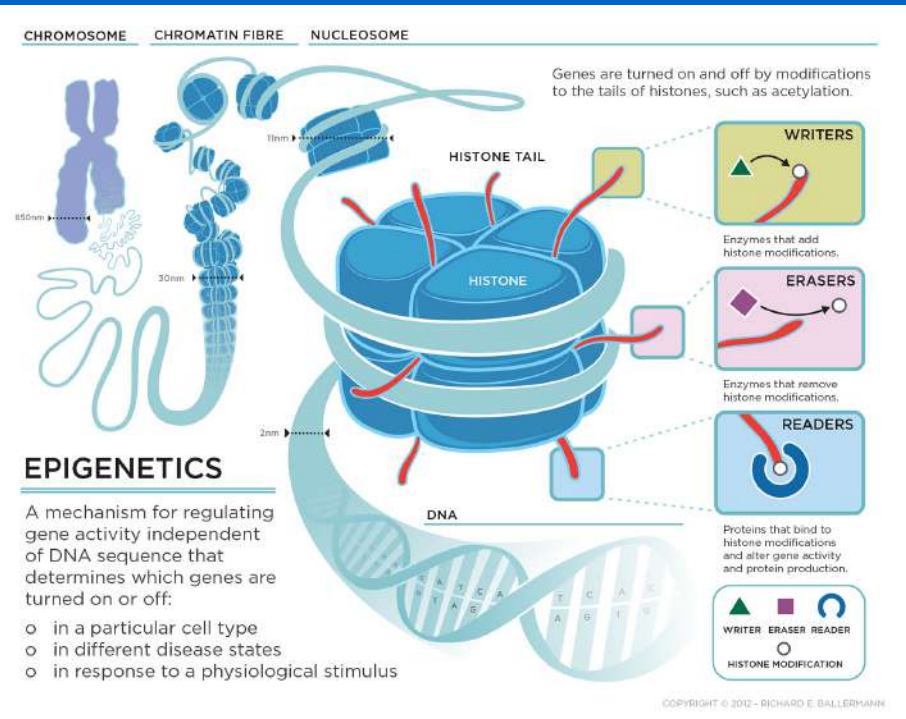


✉ : [ir@resverlogix.com](mailto:ir@resverlogix.com)  
 ☎ : 403.254.9252  
 🌐 : [www.resverlogix.com](http://www.resverlogix.com)  
 🐦 : @Resverlogix\_RVX

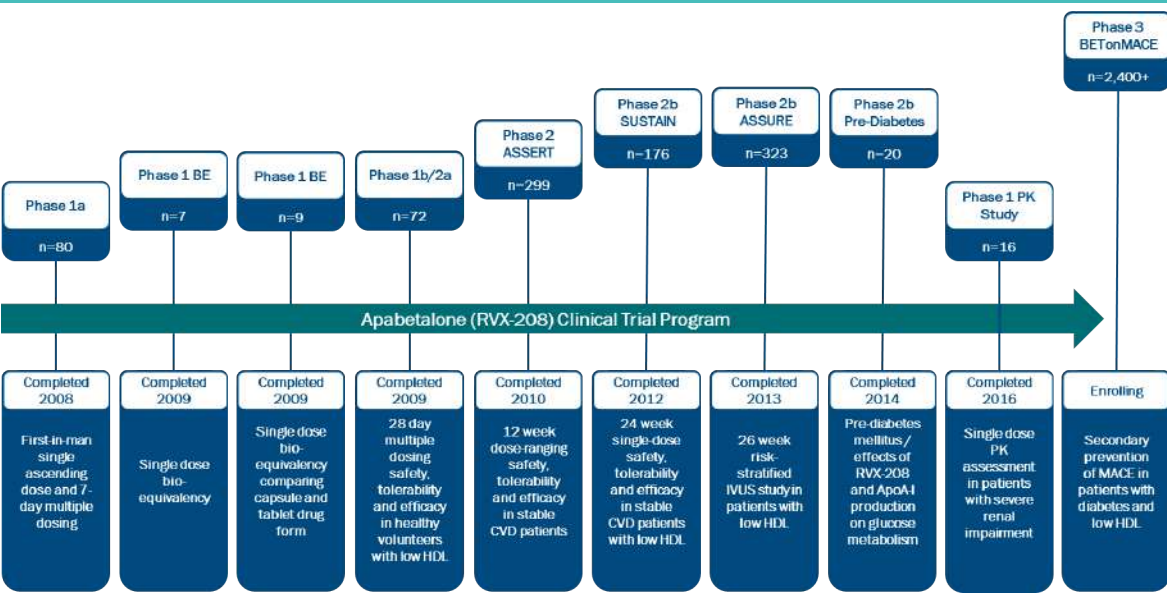


### Epigenetics

Epigenetics refers to modifications to the DNA or the proteins associated with DNA, such as histones, which in turn determine whether a gene is on or off or whether its activity is high or low. Differences in the pattern of modifications occur between different cells or organs of the body, or in response to different physiological stimuli. There is now substantial evidence that alterations in these patterns underlie multiple diseases. For these reasons, epigenetics has become an exciting forefront for the discovery of new medicines.



### APABETALONE (RVX-208) CLINICAL TRIAL HISTORY



- Phase 3 BETonMACE trial commenced Q4/15 for high-risk CVD patients with type 2 diabetes mellitus and low HDL. ~15% of the patients will also have CKD.
- Primary endpoint: time to first occurrence of Major Adverse Cardiac Events (MACE).
- Based on mechanistic data, we believe apabetalone treatment, or select BET inhibition, attenuates the inflammatory process that contributes to disease initiation and progression.
- We hypothesize that apabetalone treatment **modulates activity of the inflammatory and innate immune responses, as well as the coagulation cascade** with immediate benefits to atherosclerosis and CVD.
- 68% of people with diabetes over the age of 65 will die from a cardiovascular event.**

### Recent News

05 JUN 17 - RESVERLOGIX ANNOUNCES LEAD DRUG APABETALONE PUBLICATION AND PRESENTATION AT BIO INTERNATIONAL 2017

31 MAY 17 - RESVERLOGIX TO HOST EPIGENETICS FOCUSED SYMPOSIUM AT THE ERA-EDTA CONGRESS IN MADRID, SPAIN

### Analyst & Media

1 MAY 17 - Van Leeuwenhoeck Research: "New Indications Apabetalone Justify Re-rating" - Marcel Wijma.

27 MAR 17 - Zacks Analyst Report: "Price Target Up; More BETonMACE Sites Opening" - John Vandermosten.

### Financial Profile

- Shares O/S\*\* (MM): 105.4
- Share Price\*: \$2.14
- Market Cap\* (MM): ~\$218
- 52 week low/high\*: \$1.10/\$2.47
- Cash Balance\*\* (MM): ~\$4.9
- Cash Burn Rate\* (MM): ~\$2.0/mo.
- Total Cash Raised\*\* (MM): ~\$300

### Events

June 3-6, 2017: ERA/EDTA Congress, Madrid, Spain  
 June 9-13, 2017: ADA Scientific Sessions, San Diego, CA  
 June 19-22, 2017: Bio International Convention, San Diego, CA

Notes: \*As at 05-JUN-17, \*\*As at 31-JAN-17