

Dynasty Gold



September 2018

TSX.V | DYG FWB | D5G OTC | DGDCF

FORWARD LOOKING STATEMENTS



This presentation contains financial projections and forward-looking statements regarding Dynasty Gold Corp. based on information currently available but not yet verified by an independent Qualified Person.

Projections and forward-looking statements are only predictions and actual events or results may differ materially due to inherent risks and uncertainties, both known and unknown to the company.

Please refer to the company's SEDAR filings with the Canadian Securities Administrators (CSA) for all relevant financial reports and disclosures that, from time to time, may include subjective judgment and analysis of risks and uncertainties.

The company assumes no obligation to publicly update any forward-looking statement, whether as result of new information or future events, beyond that required by relevant stock exchange listing rules or applicable law.

Historical mineral resource estimates provided herein were obtained from previous operators and should not be relied upon by investors. The company has not yet completed the work necessary to independently verify the classification of the resource estimates and is not treating the resource estimates as an NI 43-101 defined resource verified by a Qualified Person at this time.

Corporate Overview



Dynasty Gold Corp. is a publicly listed company, based in Vancouver, British Columbia, Canada. Its core business is in mineral exploration and development. The company's portfolio of gold assets consists of:

Thundercloud Property

- ❑ Situated in the Greenstone gold belt, Northwestern Ontario, Canada
- ❑ 100% earn-in agreement with Teck Resources Ltd., the largest base metal mining company in Canada

Golden Repeat Property

- ❑ Situated in the Midas gold camp, Nevada, USA
- ❑ 100% owned by Dynasty

Hatu – Qi2 Gold Mine

- ❑ Situated in the Tien Shan gold belt, Xinjiang, China
- ❑ 70% owned by Dynasty; 30% by a China state-owned enterprise, Xinjiang Non-Ferrous Metals Group (XNF)

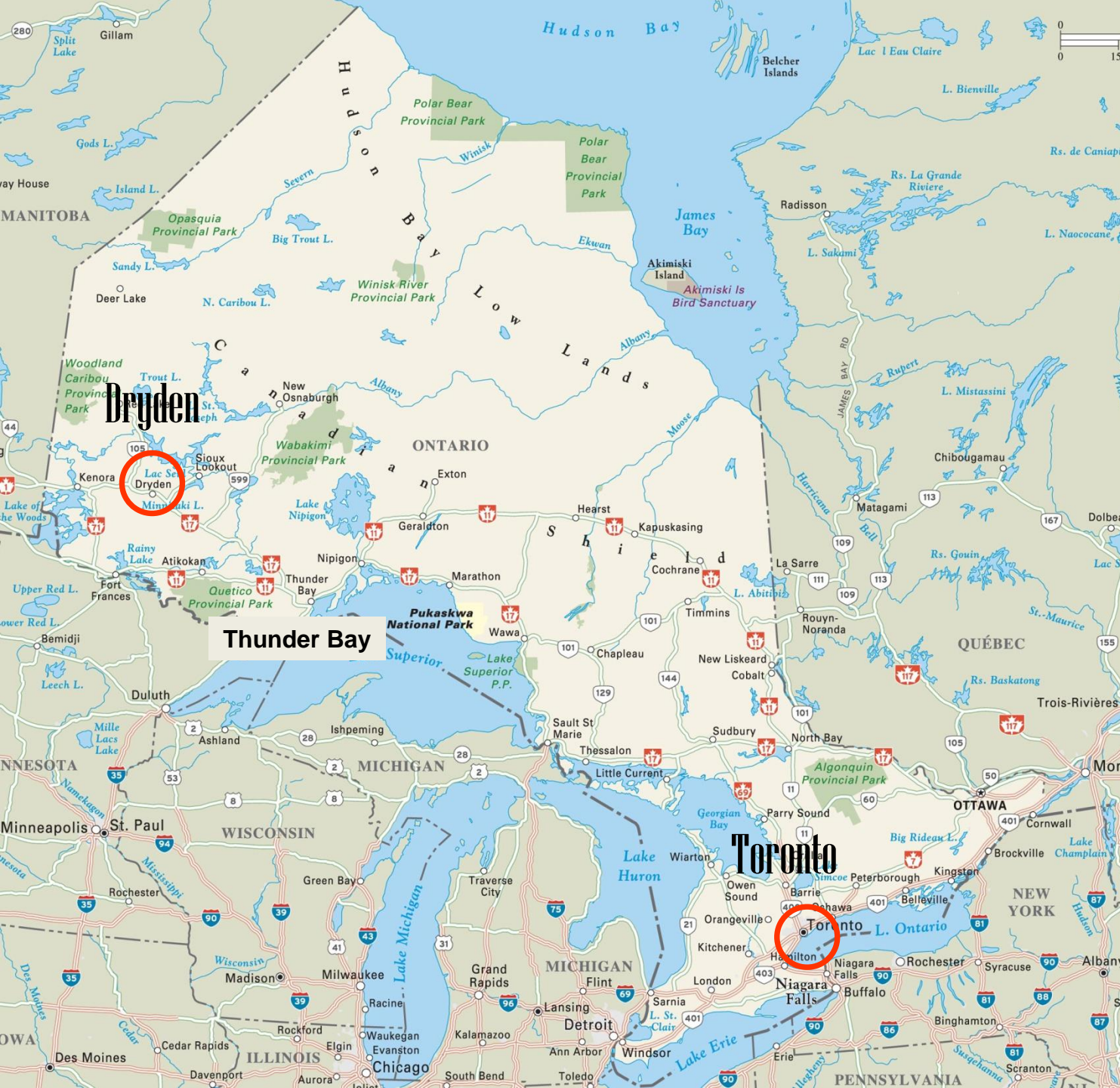
THUNDERCLOUD PROPERTY VIEW



THUNDERCLOUD

LOCATION, ACCESS & INFRASTRUCTURE

- ❑ The Property consists of 2,250 hectares
- ❑ Located 47 kilometres southeast of **Dryden**, northwestern Ontario
- ❑ Readily accessible from Trans-Canada Highway 17





THUNDERCLOUD MAJOR MINES IN THE AREA

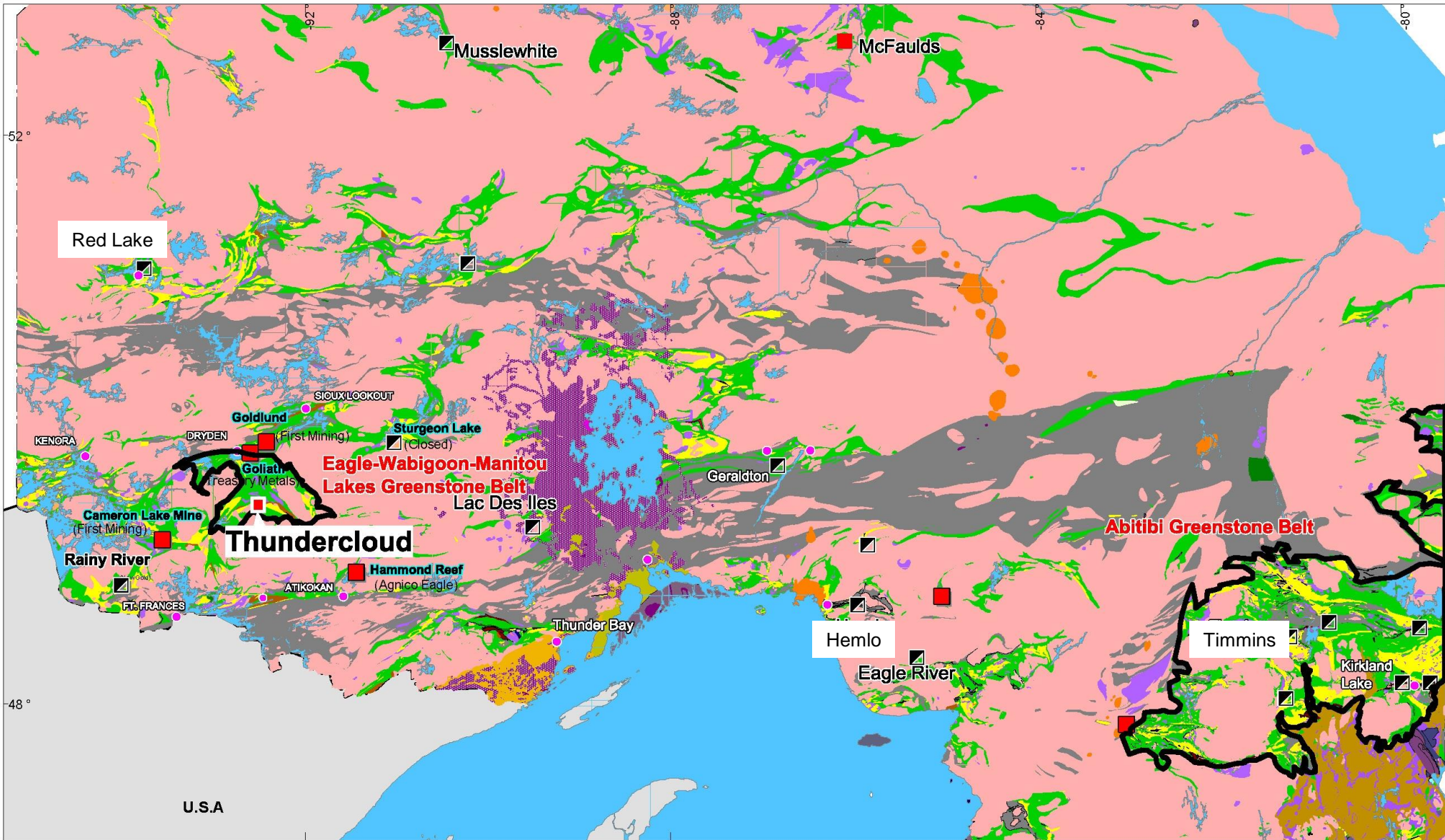


Current operating mines

- ❑ Rainy River Mine (**6.4M** oz gold, **18.7M** oz silver). Open pit grade is about 1 g/t gold, underground is 3.7-5.3 g/t gold. All-in sustaining cost is approximately \$875 per oz
- ❑ Red Lake Gold Mine (**9.25M** oz gold). Underground grade at 12 g/t. All-in sustaining cost is approximately \$1000 per oz

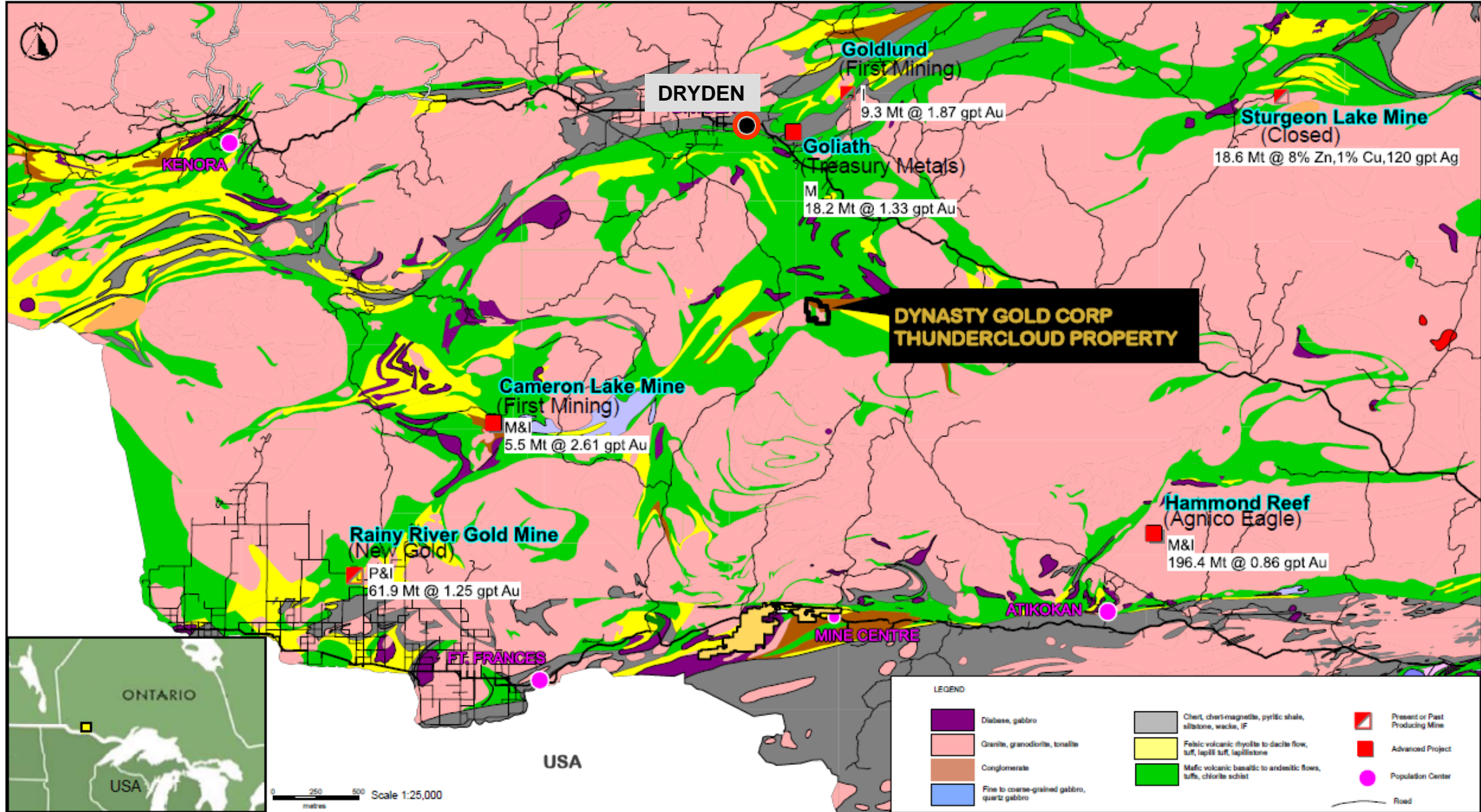
THUNDERCLOUD LOCATED ON GREENSTONE BELT

Scale 1:10,000
0 50 100 200 metres



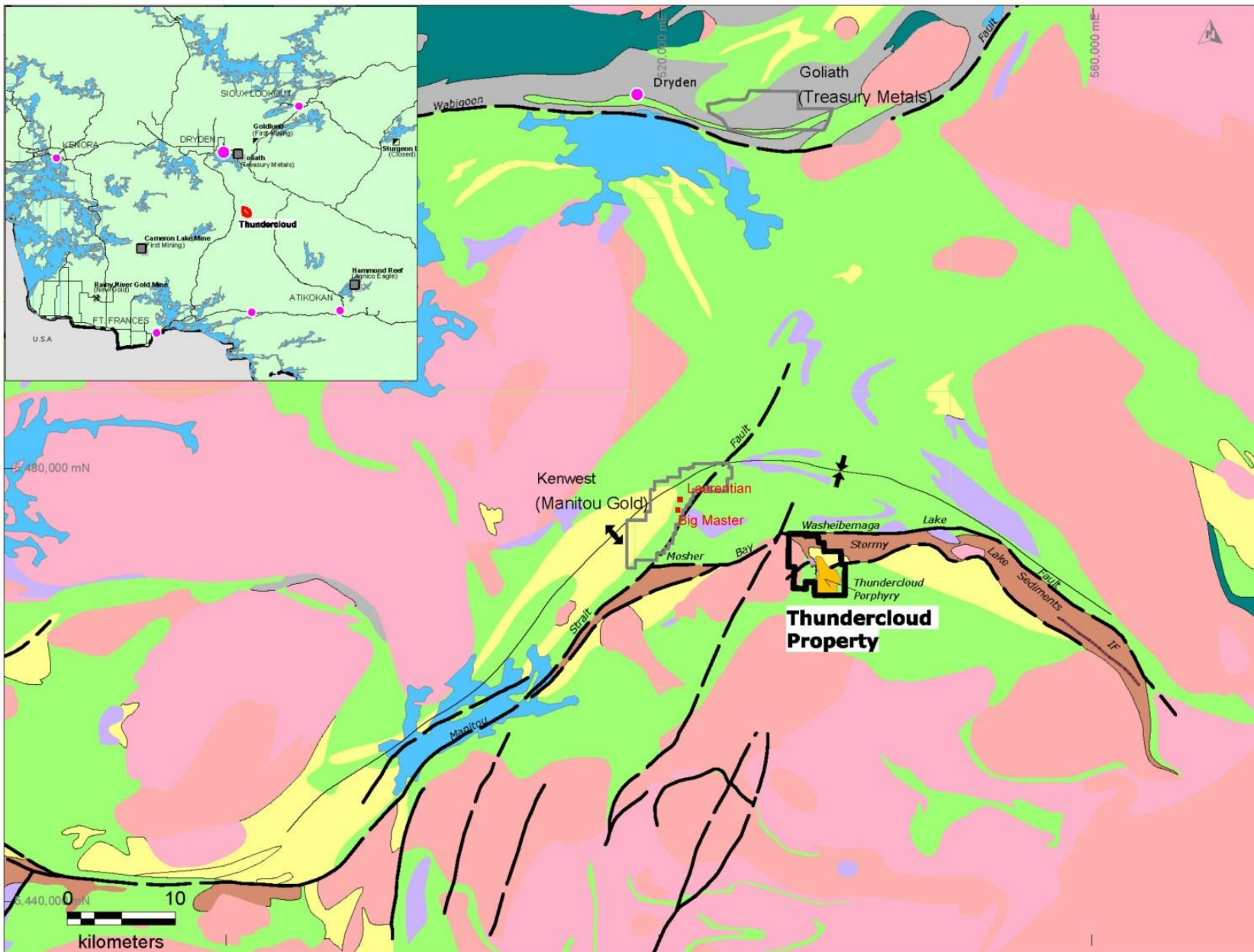
- Underexplored Central Wabigoon terrane
- Geology and structure similar to the Abitibi belt (120 million oz Au) and Hemlo camp
- Surrounded by major gold camps

THUNDERCLOUD REGIONAL GEOLOGY AND MINES

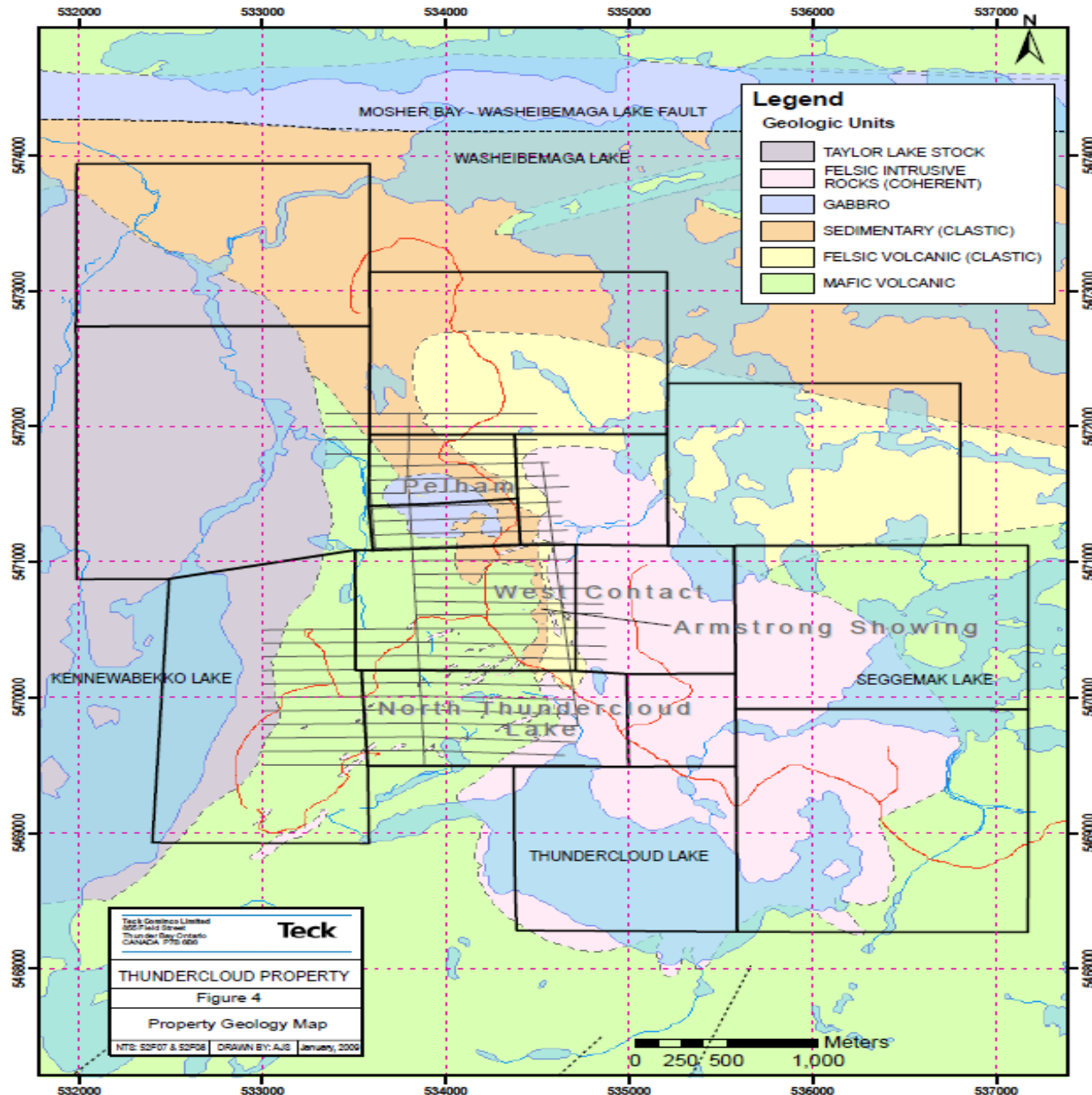


THUNDERCLOUD REGIONAL GEOLOGY

- ❑ Manitou-Stormy Lake Great Basin
- ❑ Past producers - Big Master & Laurentian Mine (Manitou Gold)
- ❑ Hosting Timiskaming-like sediments- Stormy Lake group
- ❑ Three gold zones
- ❑ Structurally complex
- ❑ All intruded by Thundercloud porphyry
- ❑ hypabyssal quartz-feldspar porphyry
- ❑ Centered on a major polyphase structure



PROPERTY GEOLOGY

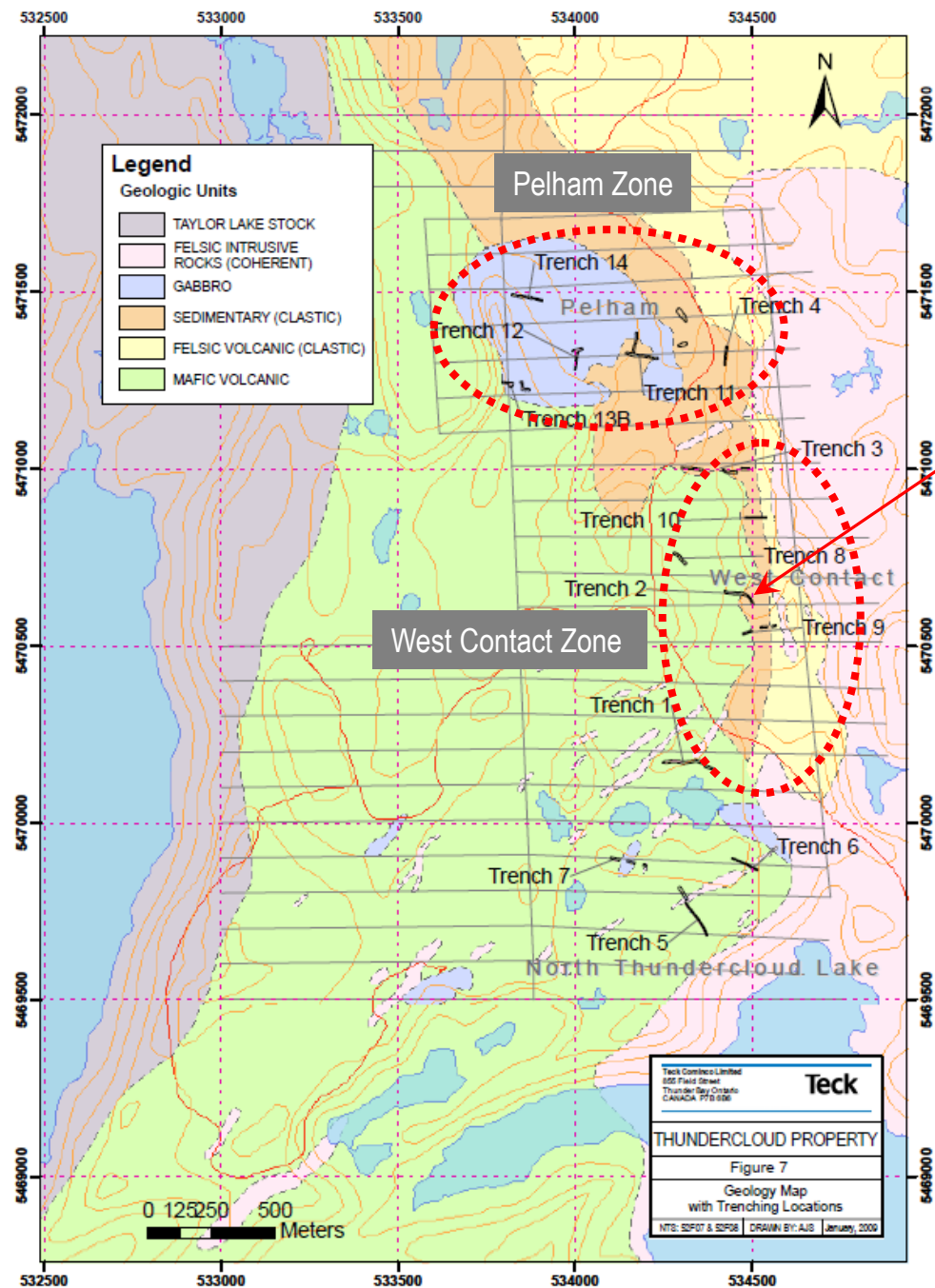


- ❑ A key feature is the presence of a high level QFP porphyry which has overlying felsic volcanic flows and QFP fragments in the conglomerates supporting a co-eval late timing during sediment deposition at ~2700 Ma along a regional structural break with a first order strike length of 70+ km. This late QFP intrusive/volcanic complex appears spatially and temporally related to known gold mineralization on the property
- ❑ Another new late intrusive phase predating the QFP porphyry is the strongly fractionated mafic gabbro's that are of interest as they host much of the Pelham mineralization
- ❑ Recent trace element work by previous operator Laurentian Goldfield supports this model and demonstrates a deeper geochemical signature to the south with a Mo, Bi, Te and sodic signature and a higher level signature of Au, As, Sb and sulfidic alteration in the Pelham structure
- ❑ The lesser explored West Contact Zone forms along the west side of the Thundercloud Intrusive and is believed to be deeper in the system along a potential feeder

THUNDERCLOUD

PAST EXPLORATION - TRENCHING

- West Contact Zone 2006/2007 trench samples returned **1.0-9.8 g/t Au**, including **8.02 g/t Au over 39.0 m** and **89.4 g/t over 3.0 m**, has seen little follow up work



THUNDERCLOUD

PAST EXPLORATION - TRENCHING

Trench #2

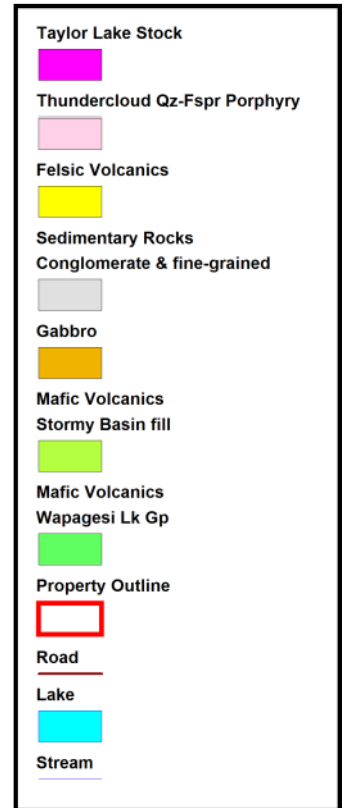
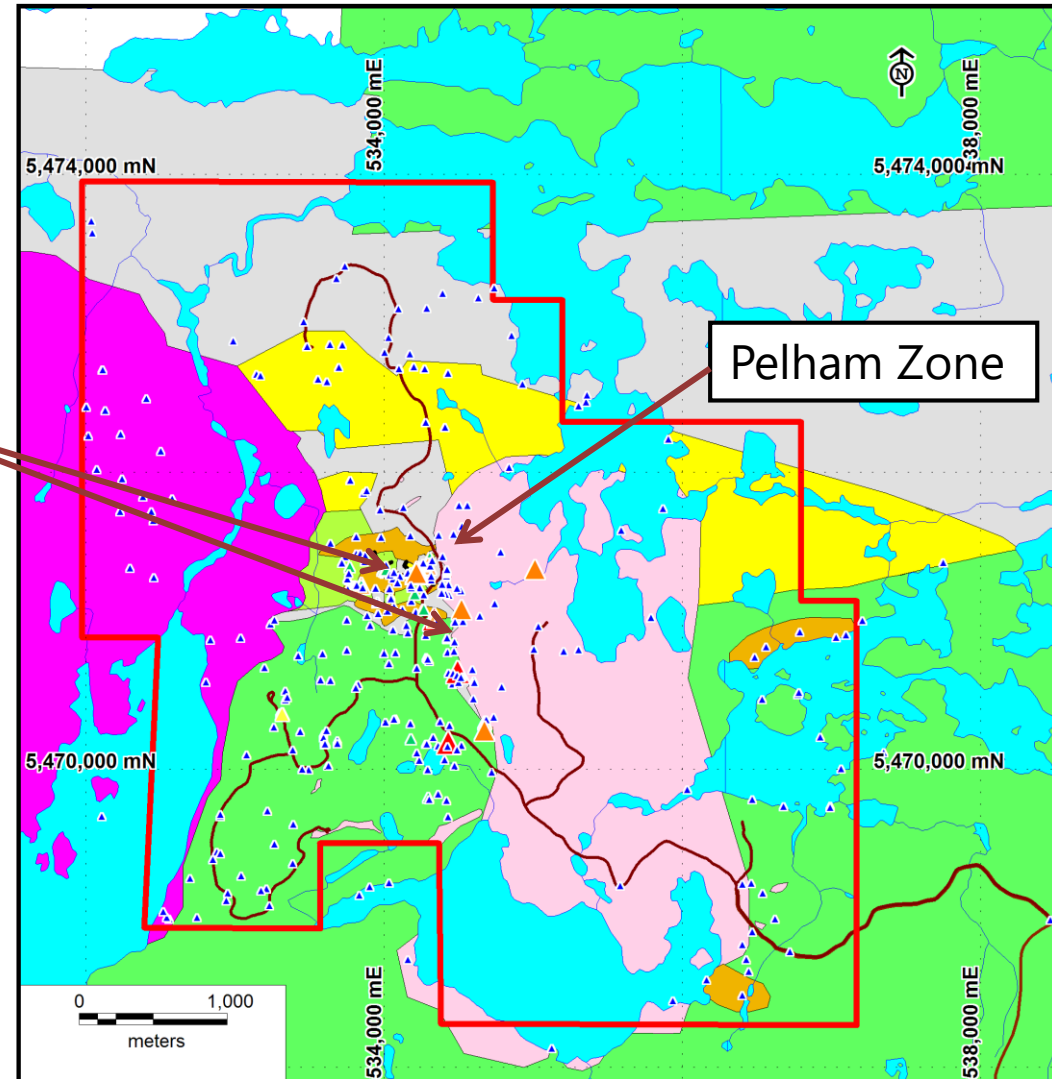
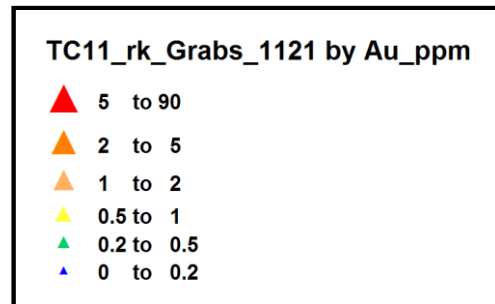


- ❑ Trenching in the West Contact Zone – **Glatz outcrop**

THUNDERCLOUD

PAST EXPLORATION - SAMPLING: Au-in-rock

- Elevated Au on surface
 - Pelham Zone
 - “West Contact” along edge of Thundercloud Porphyry



THUNDERCLOUD

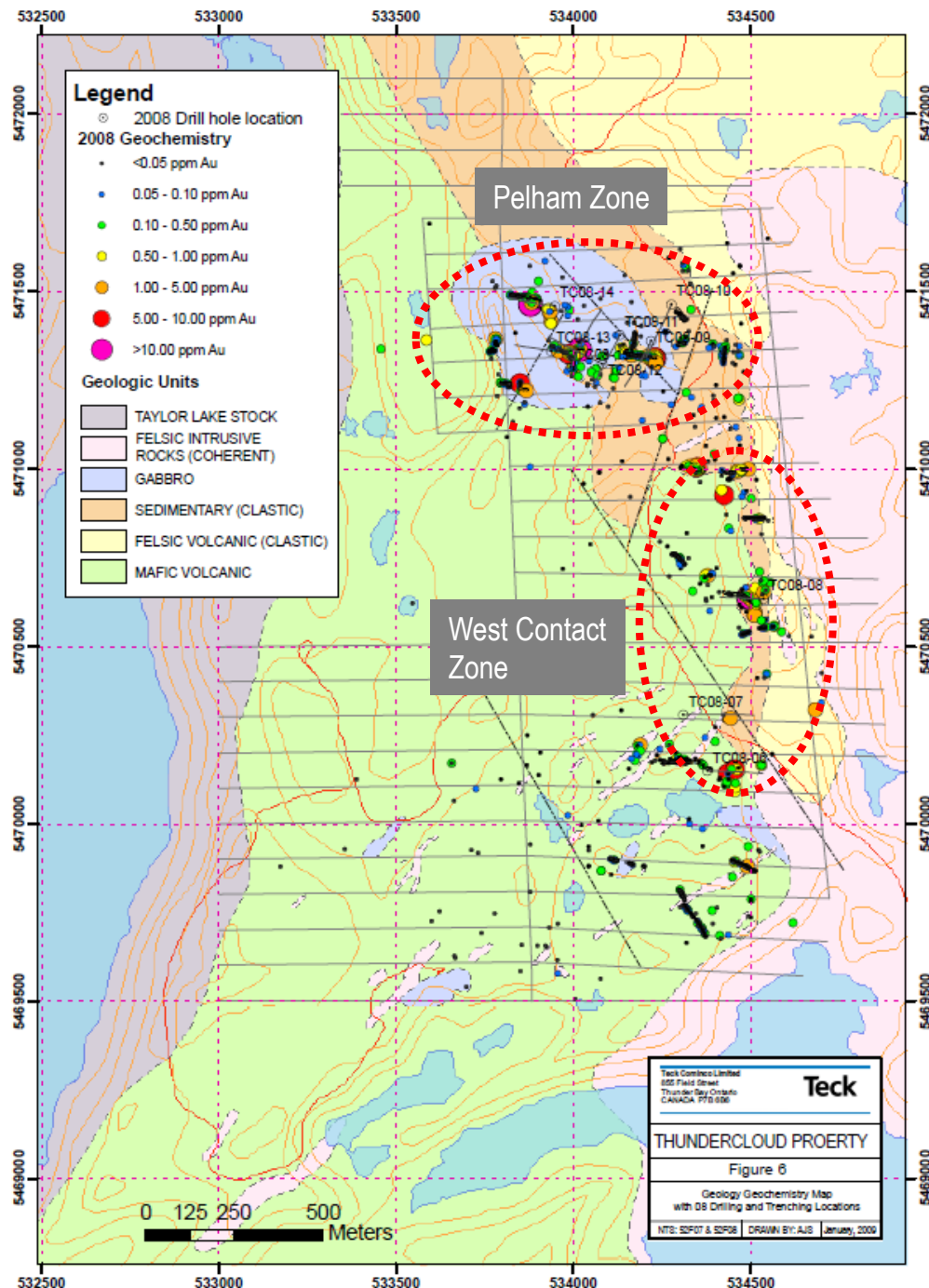
PAST EXPLORATION - DRILL RESULT HIGHLIGHTS

Highlights of historic drill data by Teck (2007/2008) and Laurentian Goldfields (2011) in Pelham Zone:

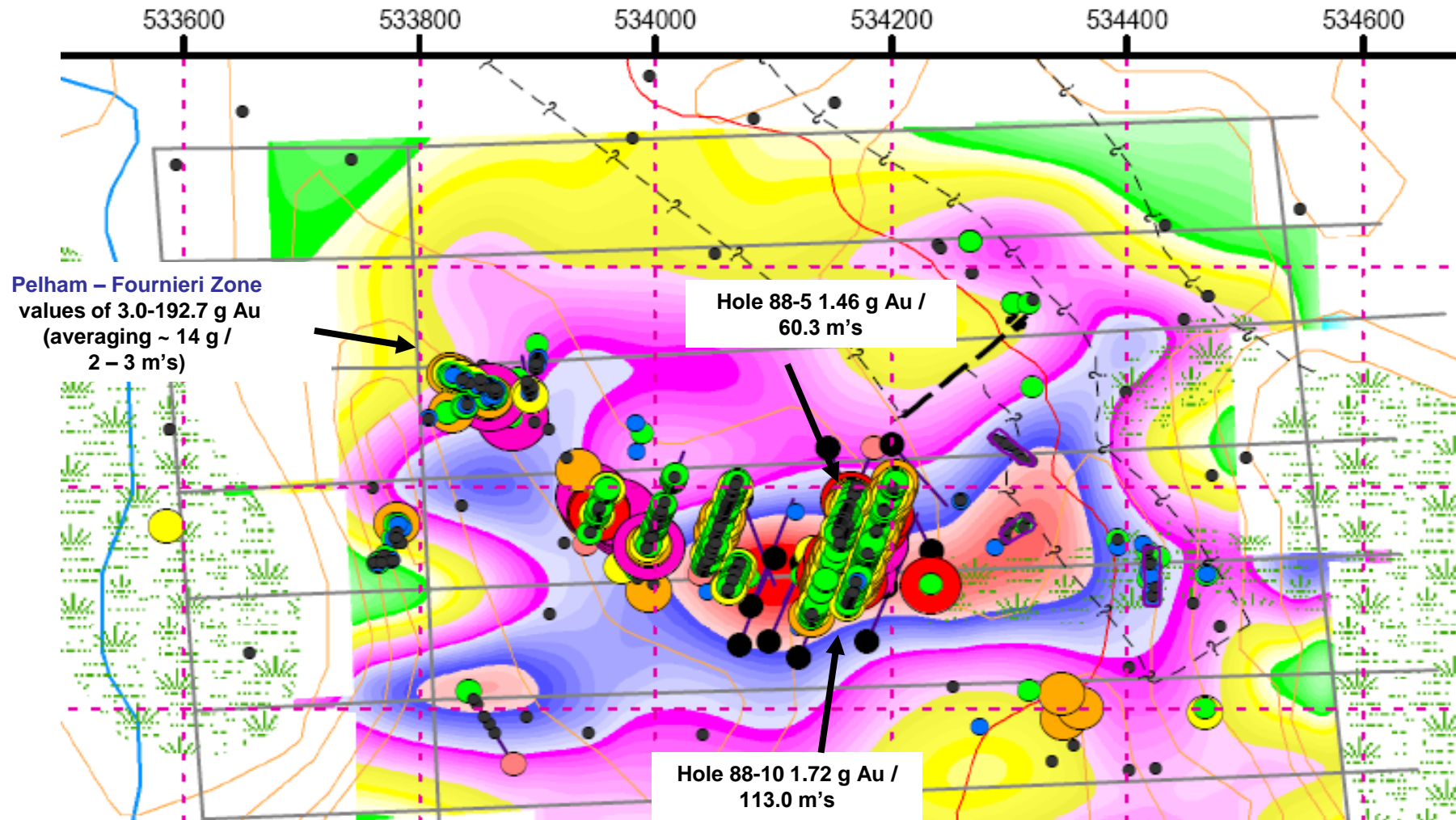
- 113.0 m @ 1.72 g/t Au (88-10)
- 60.30 m @ 1.46 g/t Au (88-05)
- 55.25 m @ 2.19 g/t Au (TC08-11), including **1 m @ 37.5 g/t Au, 9.34 m @ 7.91 g/t Au and 21.73 m @ 4.63 g/t Au**
- 29.66 m @ 0.77 g/t Au including 9.04 m @ 2.20 g/t Au (TC08-09)
- 68.8 m @ 1.55 g/t Au (TC11-001)
- 39.0 m @ 1.45 g/t Au (TC11-003)
- 39.05 m @ 1.68 g/t Au (TC11-004)
- 81.0 m @ 1.31 g/t Au (TC11-006)

▪ **3.0 m @ 14 g/t Au including 0.55 m @ 192.7 g/t**

▪ Most of the work was done in the Pelham Zone but only a small part of the Zone was drilled



THUNDERCLOUD PAST EXPLORATION DRILL RESULT HIGHLIGHTS

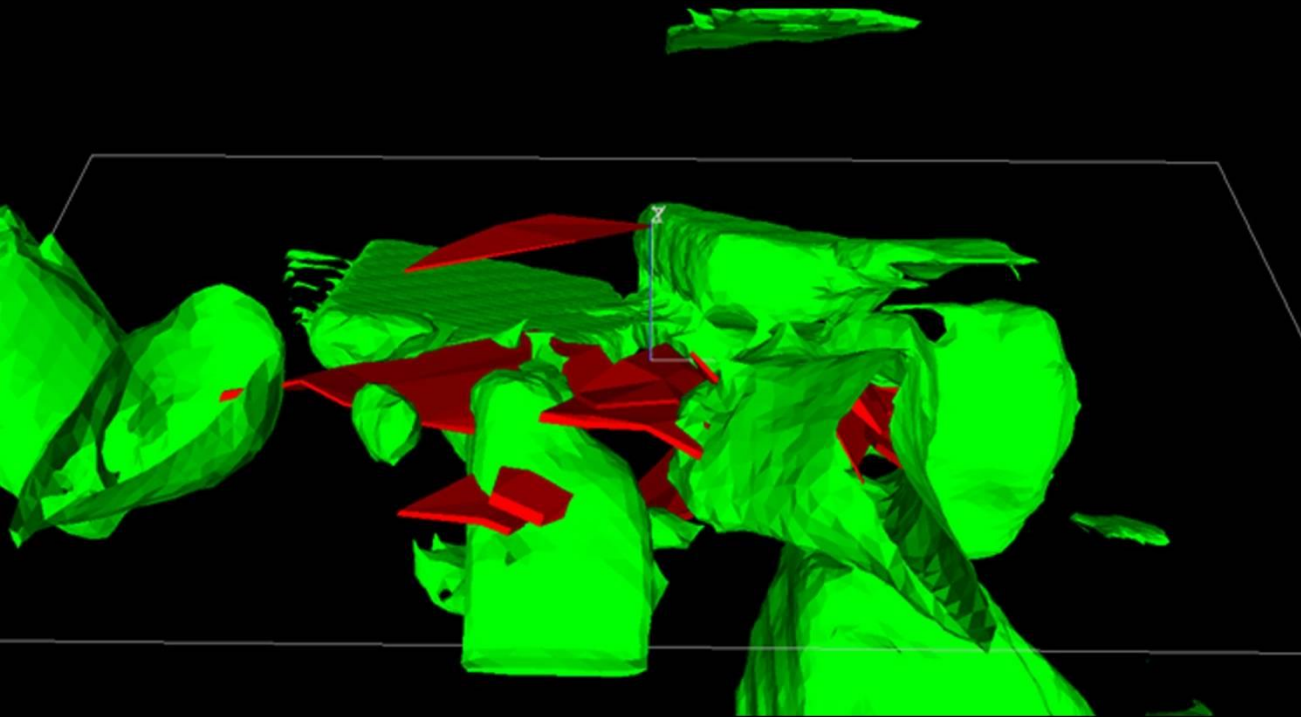


- Hole 88-10 assayed 1.72 g/t gold over 113.0 m. It confirmed that the Pelham Zone is part of 900 meter long by 200 meter wide I.P. anomaly identified by Teck in 2007

THUNDERCLOUD

GOLD RESOURCE ON PROPERTY

3D resource model – Pelham Zone

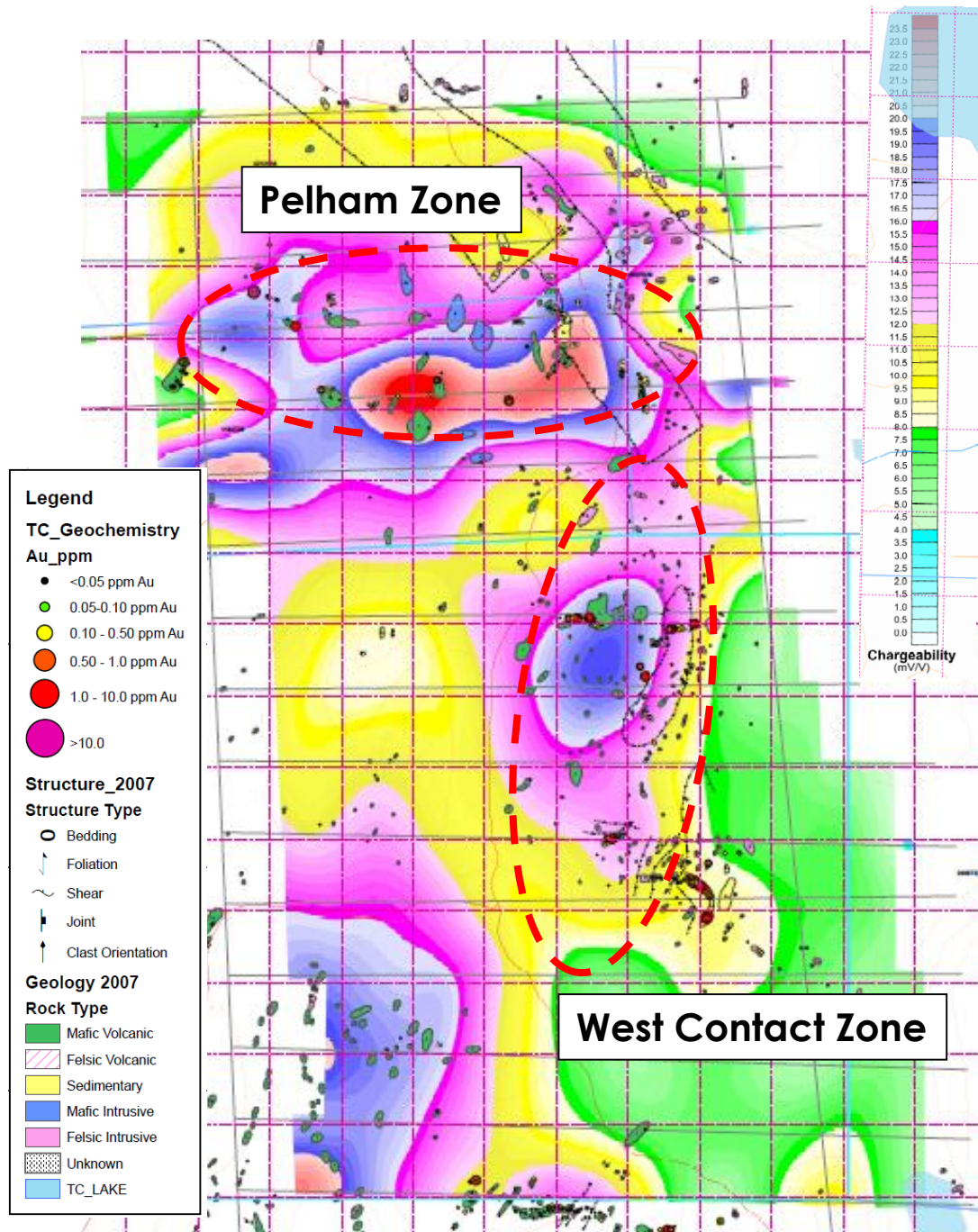


1 g/t Au grade shell (red) & under cut-off grade (green)

- ❑ Fladgate Exploration Consulting was contracted in 2011 to create a 3D resource model based on the Pelham Zone drill data, assuming a specific gravity of 2.7 for all rocks
- ❑ The model indicated an estimated potential of **300,000* ounces at a head grade of 1.6 g/t of gold**, using a 0.5 g/t cut-off grade
- ❑ Excellent potential to define **bulk-tonnage** orogenic gold mineralization with potentially **high-grade**

*Not 43-101 Compliant

THUNDERCLOUD MINERALIZATION



Gold is associated with hydrothermal alteration domains characterized by biotite-magnetite alteration with minor quartz veins and pyrrhotite. Biotite-magnetite alteration is in turn cut by chlorite-carbonate and pyrite.

Both pyrrhotite and pyrite occur as disseminations, clots and veins, and are variably strained. In general, there is a **correlation between sulphide concentration and gold grade**, though a high ratio of pyrrhotite relative to pyrite appears to be the key for gold enrichment.

Given the importance of magnetite and pyrrhotite in the hydrothermal assemblage, several untested ground magnetic targets warrant trenching and/or drill testing.

The presence of sulphides in association with gold suggests that chargeability is a key targeting tool, and this is confirmed by an excellent association of gold with a strong chargeability anomaly in the Pelham area. Additional modelled chargeability anomalies remain untested.

THUNDERCLOUD PROJECT TEAM



Andrew Tims, P. Geo. – Project Manager, an exploration geologist with more than 25 years of experience working in Kirkland Lake-Timmins and Red Lake gold camps, and the Wabigoon area of northwestern Ontario. Andrew has worked for Teck and Hemlo Gold Mines in the Hemlo gold camp before joining Rainy River Resources as a senior exploration geologist. He was part of the exploration team that expanded the Rainy River resource from 550,000 oz of gold in 2005 to over 6 million oz when it was acquired by New Gold Inc. in 2013.

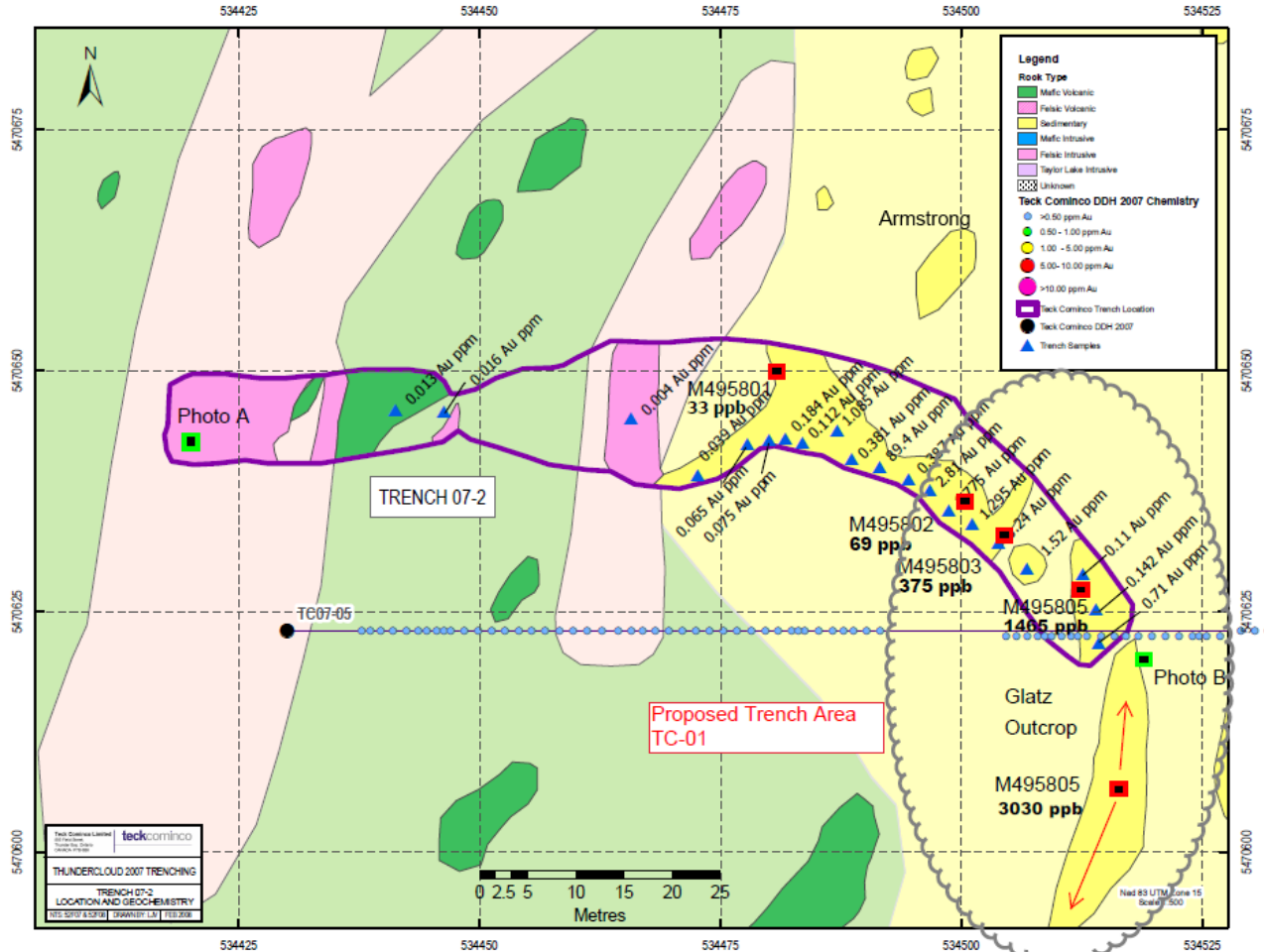
Graeme Evans, P. Geo. – Project Advisor, Graeme was involved in Teck Resources' acquisition of Thundercloud in 2006. Subsequently, he supervised a 4000 meter drill program for Teck in 2007 and 2008. The drill data was later used by Fladgate to create a 3D resource model in the Pelham Zone. Graeme's knowledge of Thundercloud exploration history and geology are invaluable to advancing the project.

Robert Gallagher, P. Eng. – First Nations Consultant, a mining veteran with over 35 years experience in mine development and operations, has joined the team as the First Nations Consultant. Mr. Gallagher's most recent position was Chief Executive Officer of New Gold where he negotiated and signed several agreements with First Nations for the nearby Rainy River Mine, and his skills in negotiating and reaching agreements are highly regarded in the industry. Bob is a director of BC Hydro.

THUNDERCLOUD PROPERTY VIEW - West Contact Zone

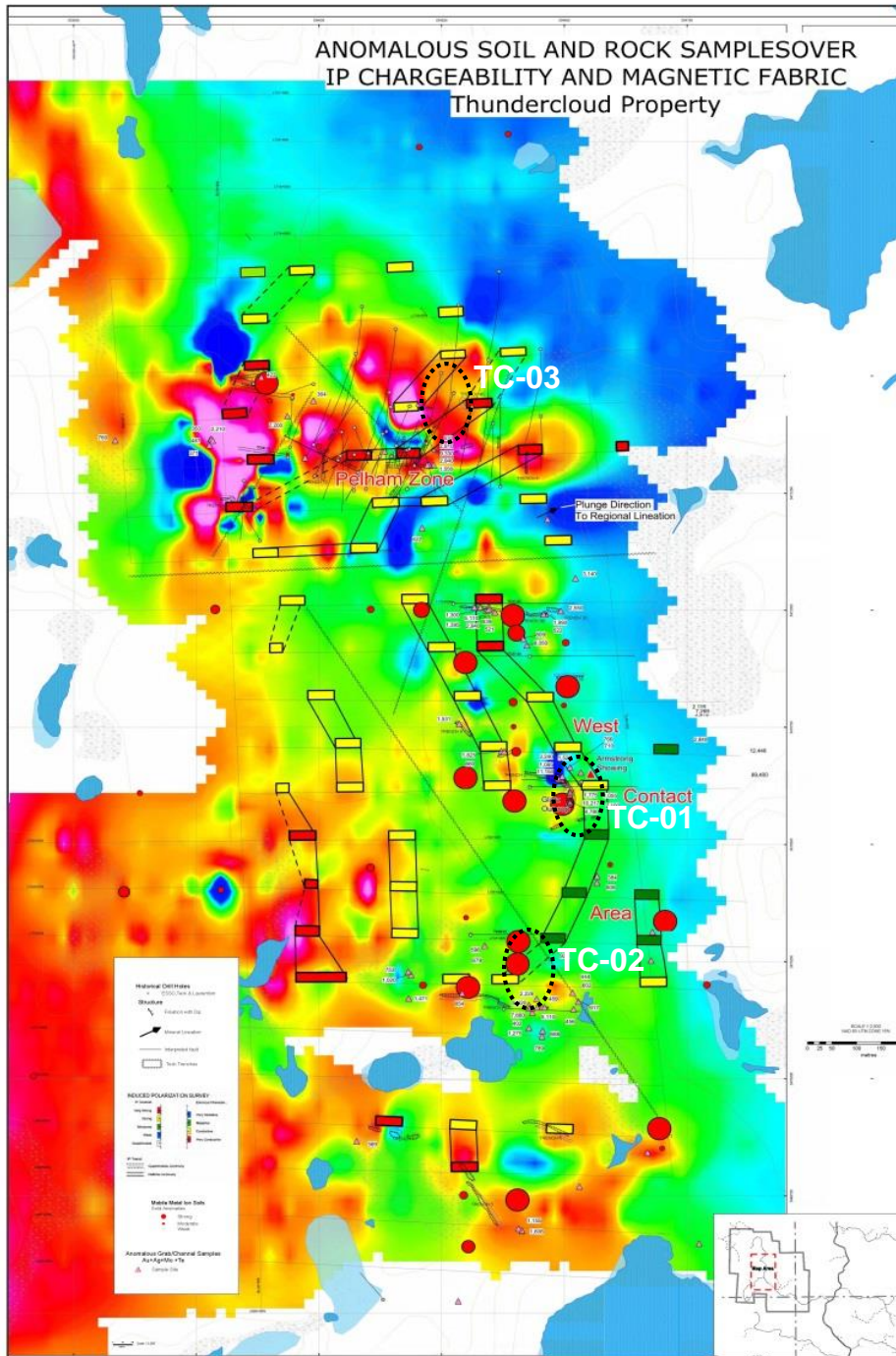


THUNDERCLOUD 2018 SUMMER EXPLORATION WORK COMPLETED



- ❑ A rock chip sampling program was completed in the West Contact zone, an area immediately to the south of where Teck's trenching data returned 8.02 g/t gold over 39 meters.
- ❑ The assay results from the program extended the mineralization by 30 meters. Total surface mineralization is 69 meters averaging 5.85 g/t gold. Mineralization remains open in all directions.





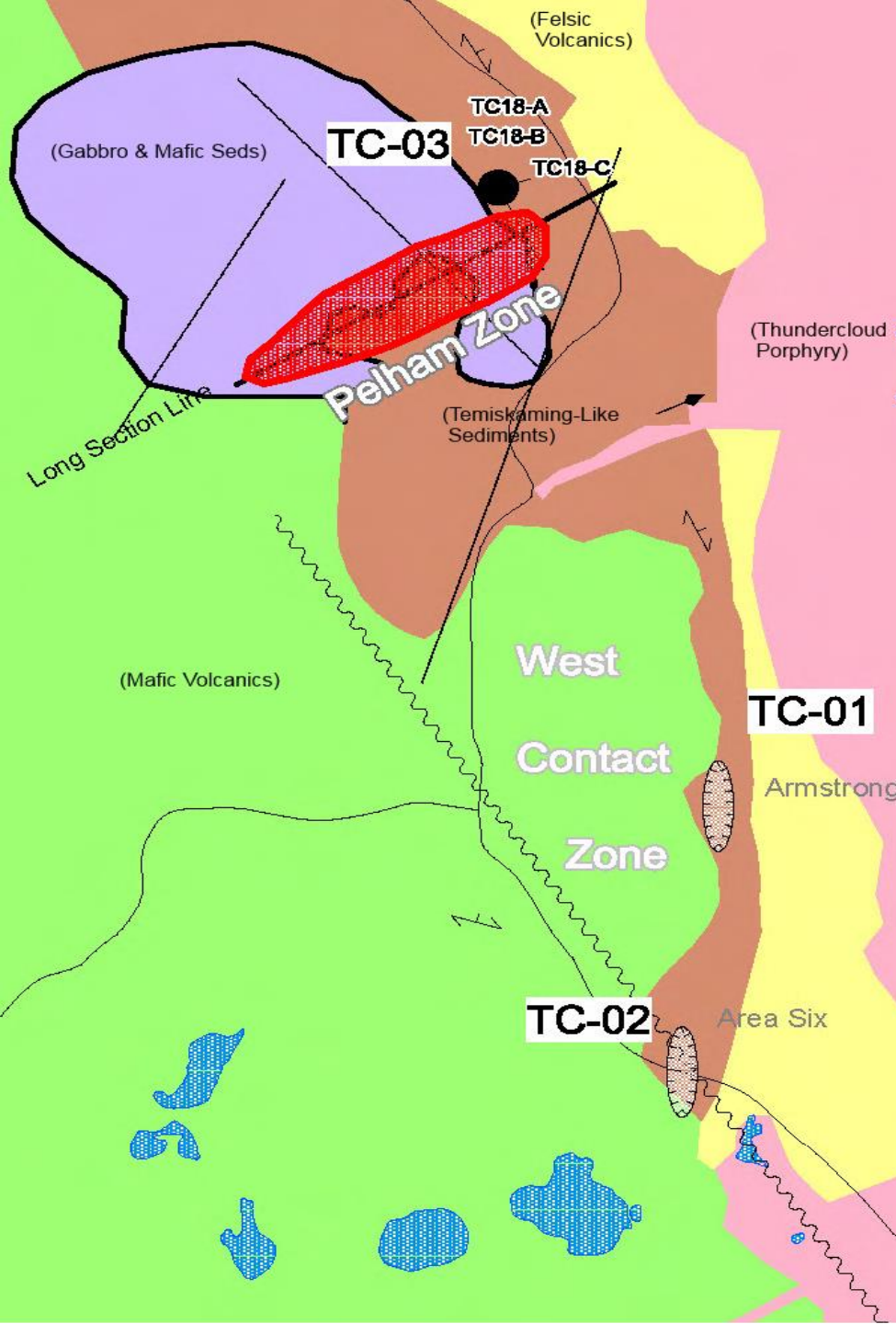
THUNDERCLOUD

2018 SUMMER EXPLORATION WORK COMPLETED

- ❑ All historic drill and geochem data were collated and combined into a single database. All drill hole cross sections were created from this single database.
- ❑ Property scale map and 3D modelings were created to illustrate geophysical, geochemical, trenching and drill hole data and locations
- ❑ Potential drill and trenching targets were identified (TC-01, TC-02, TC-03)

THUNDERCLOUD

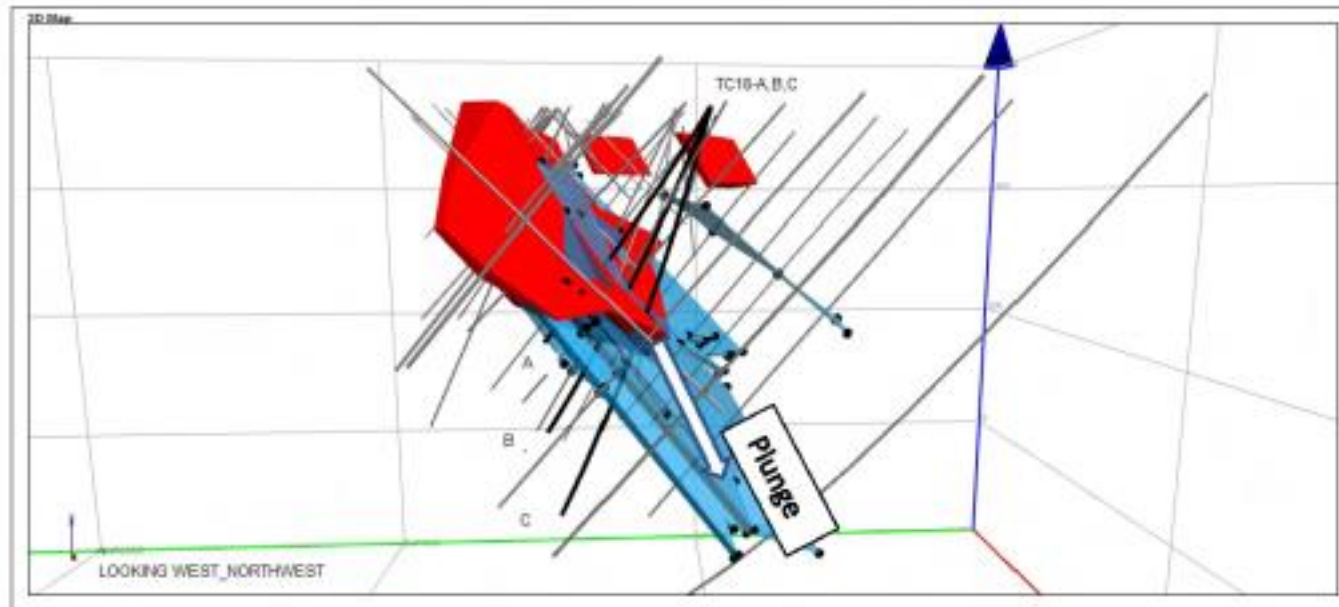
2018 FALL/WINTER WORK PROGRAM – West Contact Zone



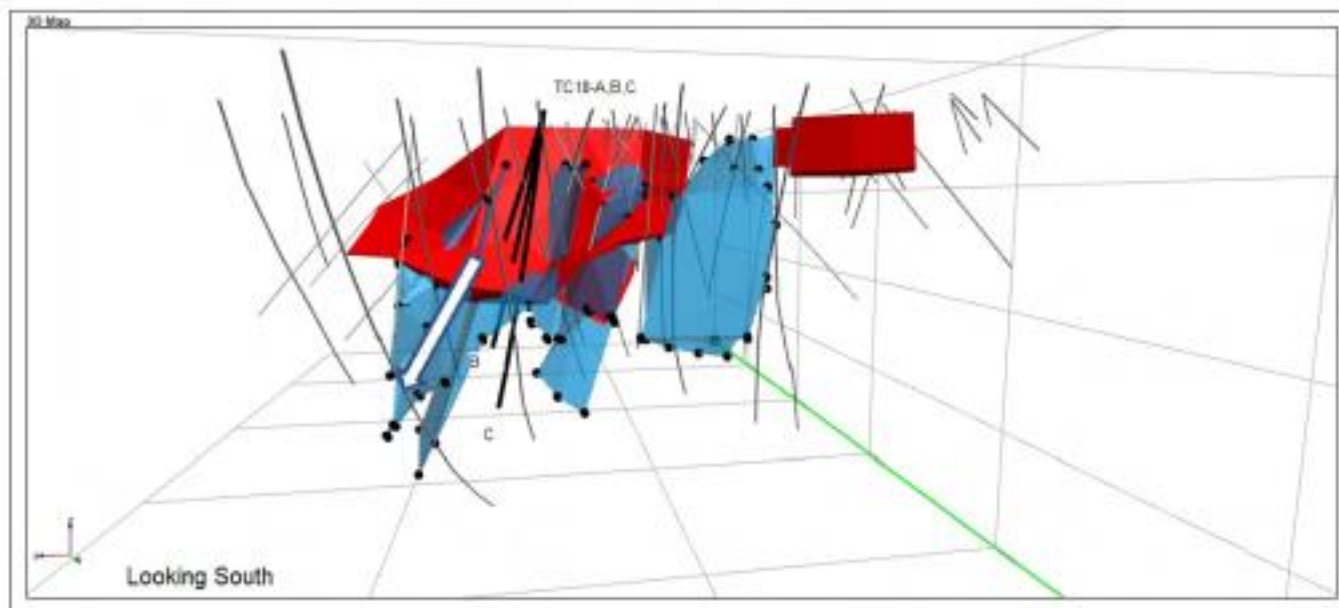
- ❑ TC-01, trenching centered on the Glatz outcrop expanding in a north-south direction to the Armstrong Showing
- ❑ TC-02, 400 m to the south, a target identified by Teck in 2008, and confirmed by rock chip samples collected by Mr. Glatz that returned up to 9.4 g/t gold
- ❑ The goal of the proposed trenching is to extend the known mineralization and acquire additional structural data on the gold system before test drill. Available regional structural data and airborne magnetics indicate a northeast plunging lineation
- ❑ Following trenching, a minimum of 3 diamond drill holes are planned for each of the trenched area to test the extent and nature of the mineralization
- ❑ Subject to the results of the test-drill program, an extensive second phase drill program will follow to confirm the size of the mineralization

THUNDERCLOUD

2018 FALL/WINTER DRILL PROGRAM – Pelham Zone



Blue = 0.25 to .50 grams per tonne Red = +1.0 grams per tonne



- ❑ To confirm historic drill results and to test the north-east plunge hypothesis put forward by Laurentian Goldfields and suggested by structural data from regional mapping and airborne magnetics
- ❑ To test a possible footwall gold zone parallel to the main Gold Zone as indicated by a 3D modeling of drill core data



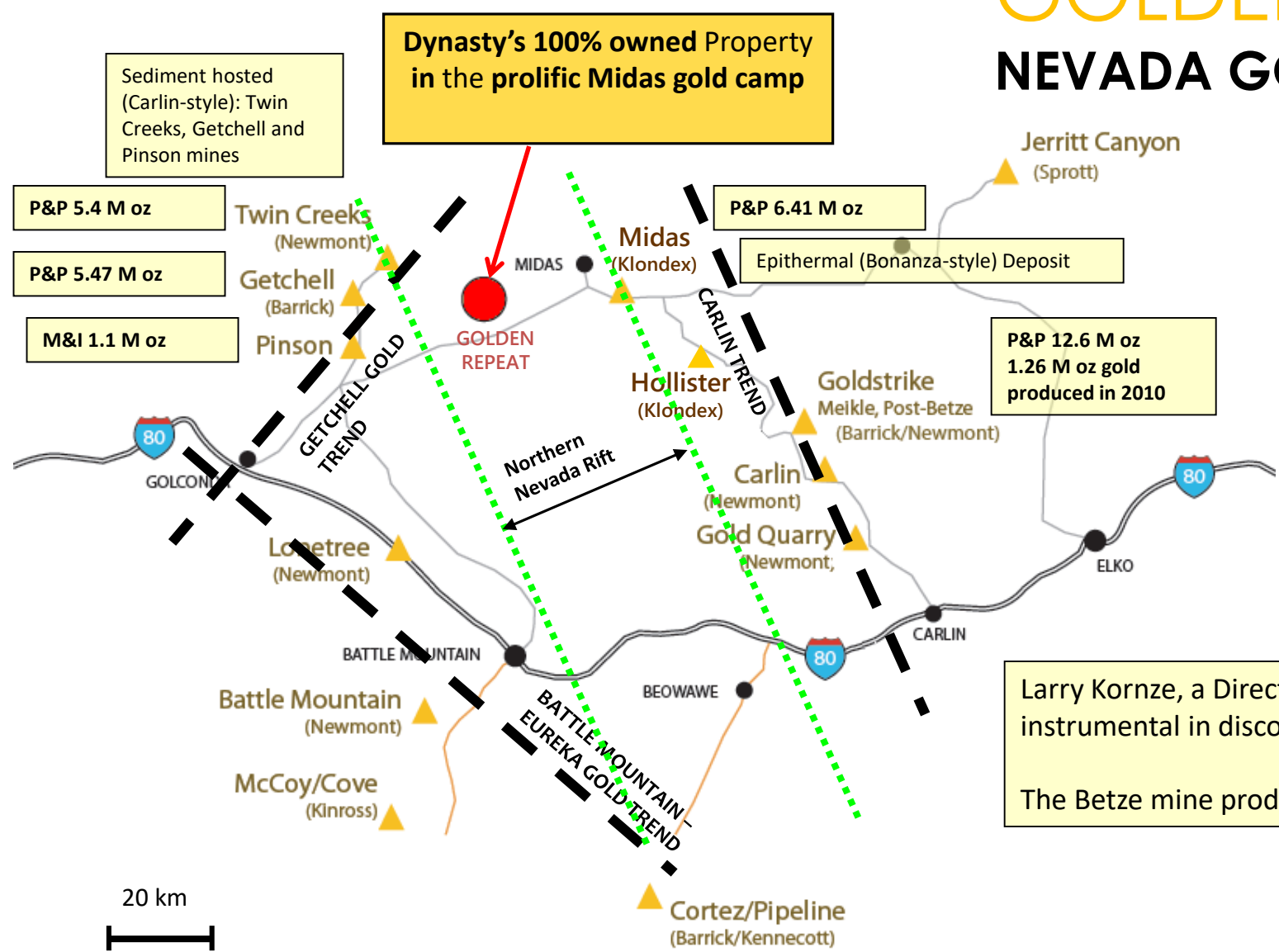
GOLDEN REPEAT

LOCATED ON MIDAS TREND

- ❑ Situated in the Elko County, Nevada
- ❑ Within the Northern Nevada Rift

GOLDEN REPEAT

NEVADA GOLD TRENDS AND MINES

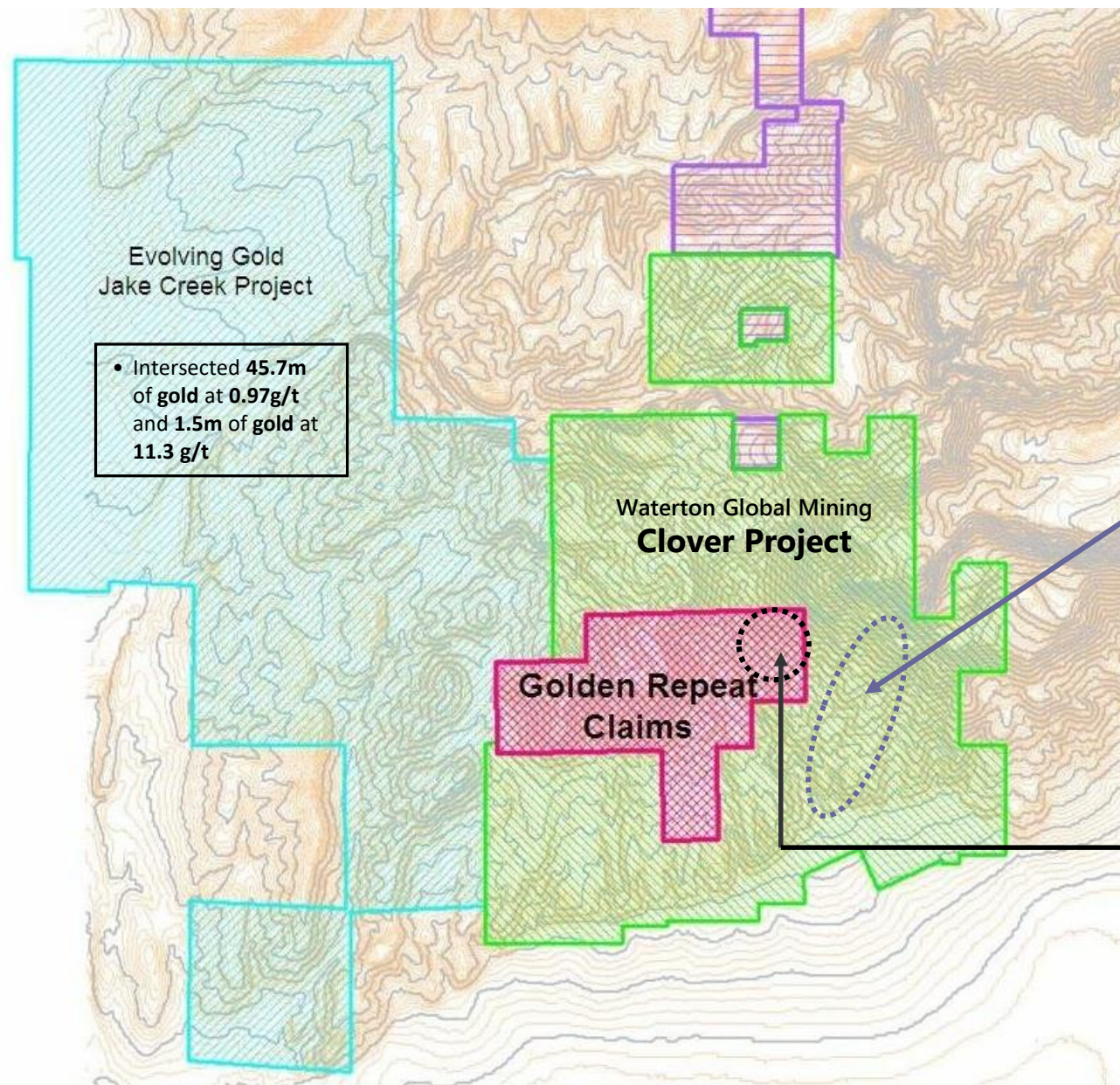


- ❑ Carlin, Battle Mountain–Eureka and Getchell gold trends
- ❑ Midas and Bonanza style high grade deposits
- ❑ World class mining operations

Larry Kornze, a Director of Dynasty Gold, was instrumental in discovering Betze in late 1980's. The Betze mine produced over 40 M oz of gold.

GOLDEN REPEAT

IMMEDIATE NEIGHBOURS



Yamana's drilling on Clover:

- **14.78 g/t** over **7.6 meters** of gold and **25.28 g/t** of silver, **54 g/t** of gold and **27.9 g/t** of silver over **1.52 meters** in hole CV006
- Hole CV 12 intersected **20.17 g/t** of gold over **3.05 meters**
- **These high-grade drill holes are approximately 300 meters from Golden Repeat boundary**

Very little drilling has been done on Golden Repeat. Only 5 drill holes by Romarco (1997-98) and 3 drill holes by Dynasty Gold (2011)

HATU - Qi2

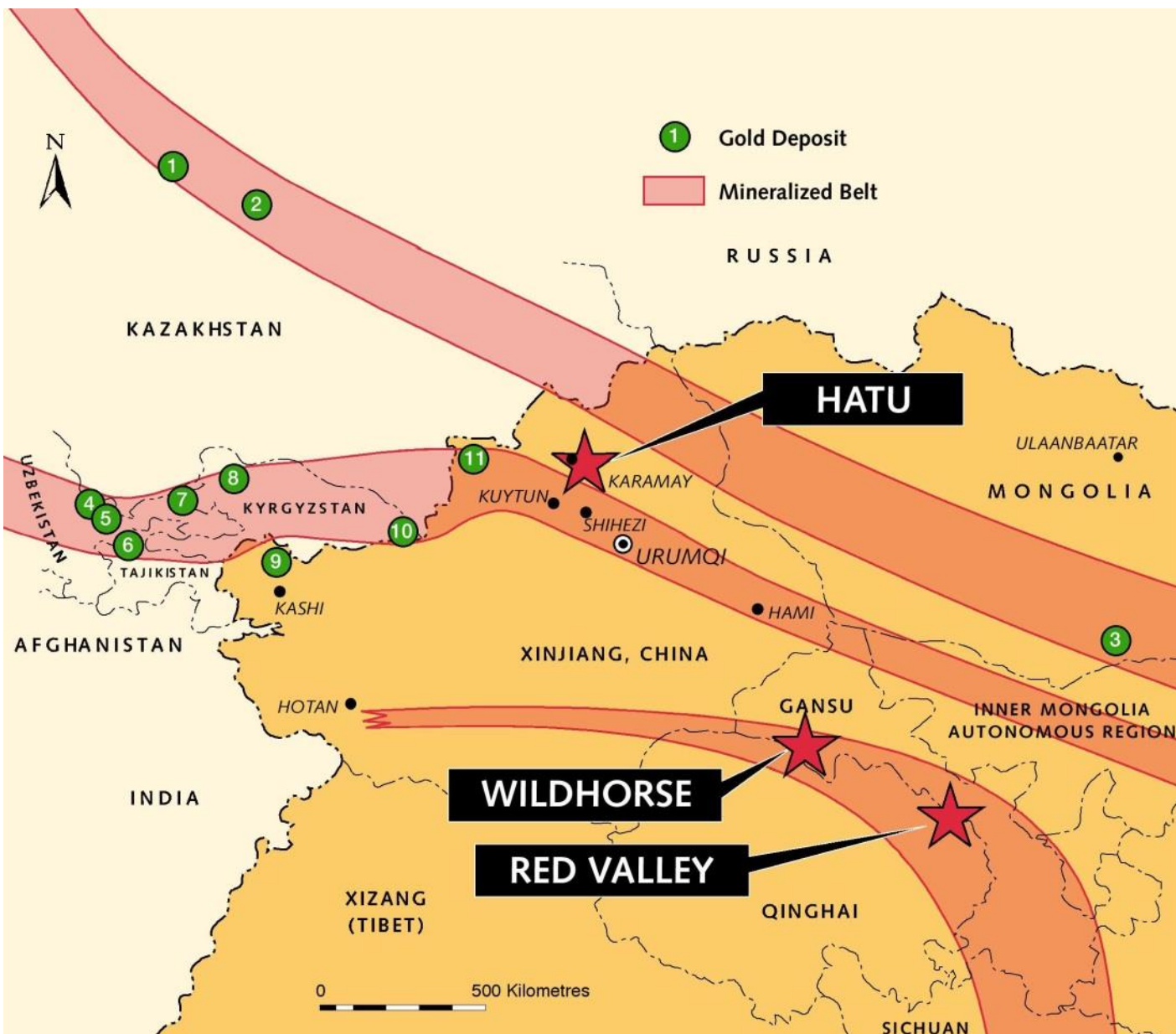
GOLD MINE



- ❑ Xinjiang province, NW China
- ❑ Excellent mining amenities. Close to major highway and it is only 10 km away from Qi-1 which is operated by Dynasty's partner Xinjiang Non-Ferrous Metals Industrial Group Co. Ltd.
- ❑ Qi-1 has produced several million ounces of gold in the last twenty years

HATU-Qi2

LOCATED ON TIEN SHAN GOLD BELT



□ The Tien Shan Gold Belt is one of the richest mineral resource areas in the world hosting large high grade orogenic, mesothermal porphyry and epithermal gold deposits

KNOWN GOLD DEPOSITS

1	VASILKOSKOYE	13,400,000 oz Au
2	BAKYRCHIK	8,000,000 oz Au
3	TURQUOISE HILL	
4	MURUNTAU	140,000,000 oz Au
5	DAUGYATAU	9,000,000 oz Au
6	JILAU	4,000,000 oz Au
7	KALMYKAR	25,000,000 oz Au
8	TALUS	8,000,000 oz Au
9	SAWAYAERDUN	3,000,000 oz Au
10	KUMTOR	13,600,000 oz Au
11	AXIS	2,000,000 oz Au

HATU - Qi2

PROPERTY HIGHLIGHTS



- ❑ NI43-101 compliant resource of 563,000 ounces of gold (8.7 million tons grading 2.68 g/t gold @ cut-off of 2.0 g/t gold)
- ❑ Dynasty has spent over US \$12M over four years in advancing the project
- ❑ Joint Venture Agreement - Dynasty Gold owns 70% interest and a subsidiary of Xinjiang Non-Ferrous Metals Industrial Group Co. Ltd. owns 30%
- ❑ Dynasty is actively pursuing a settlement for its 70% ownership in the Hatu-Qi2 project with Xinjiang Non-Ferrous to recover its investment and value added to the project

Thundercloud Property

- ❑ Drill to delineate a resource in the Pelham Zone on the Thundercloud property with a goal to achieve a NI43-101 compliant resource estimate
- ❑ Test drill the West Contact Zone on the Thundercloud property, to follow-up the high grade trench results obtained in 2006. The goal is to define a resource by drilling

Golden Repeat Property

Advancing the Golden Repeat project through further drilling for which a drill permit was received by the Company

Hatu – Qi2 Gold Mine

- ❑ Continue the on-going effort to reach a settlement with the Chinese partner for Dynasty's 70% ownership in the Hatu Qi-2 gold mine

Continue to review high quality projects to build up a portfolio of gold assets to add shareholder value

Capital Structure



Stocks are traded on the following Exchanges	Trading Symbol
Canada – Toronto Venture Exchange	DYG
US – Over-the-Counter (OTC)	DGDCF
Germany – Frankfurt Exchange	D5G
Share Capital	
Total issued and outstanding shares	19,975,975

R. Stuart (Tookie) Angus, LLB, Advisory Board Member

- Independent business advisor to the mining industry for over 30 years focusing on significant international exploration, development and mining ventures, and all aspects of structuring and finance
- Former Chairman of the Board of BC Sugar Refinery Limited, was a Director of First Quantum Minerals until June 2005, a Director of Canico Resources Corporation until its takeover by CVRD in 2005, a Director of Bema Gold until its takeover by Kinross Gold in 2007, a Director of Ventana Gold until its takeover by AUX Canada in 2011 and a Director of Plutonic Power until its merger with Magma Energy in 2011

Roman Shklanka, Ph.D., Geo, BComm, Advisory Board Member

- Over 45 years of international experience in the mining industry. Held positions including Chairman of Canico Resources Corp. (Onca-Puma laterite deposit, Brazil). Canico was purchased in 2005 by CVRD, now Vale, in a \$940 million takeover
- Chairman of Sutton Resources Ltd. (Bulyanhulu deposit -- Tanzania) until its takeover by Barrick Gold in 1999, for \$525 million
- Was responsible for the acquisition and exploration of numerous mines, among them the Australian Granny Smith gold mine and Osbourne copper mine, as well as the Kidston gold mine-at that time the largest gold mine in Australia
- Received a number of mining industry achievement awards and was inducted into the Canadian Mining Hall of Fame in 2009

Theodore W. Muraro, MSc, P. Eng., Advisory Board Member

- 40 years of experience in exploration in North America, Europe, Africa and Asia
- 35 years at Teck Resources Ltd. in various positions including Chief Geologist and internal Consulting Geologist to the Exploration Division

Robert (Bob) Gallagher, P. Eng., Advisory Board Member

- 35 years of experience in the mining industry; held senior and executive positions in major mining companies, most recently President and CEO of New Gold Inc.
- Oversaw the development of a number of world-class gold-copper mines, including New Gold's Rainy River Mine in Ontario, Canada
- skilled in negotiating and reaching agreements with First Nations
- A director of BC Hydro, Yamana Gold Inc. and Capstone Mining Corp., among others

Ivy Chong, President and CEO, Board Member

- Held senior executive positions in the mining industry since 1996
- Successfully initiated and closed several option and joint venture agreements with majors, mid-size mining companies and junior exploration companies
- Assisted multiple companies with their IPOs and raised capital for resource companies in Asia, Europe and North America
- Held senior corporate positions with the Hong Kong Stock Exchange and Deloitte and Touche

Larry Kornze, P.Eng., VP Exploration & Board Member

- 30+ years of international gold exploration experience
- Credited with the discovery of Barrick's 40 million ounce Betze gold mine on the Carlin Trend in Nevada in the late 1980's
- Member of the team responsible for the discovery of the Mickle, Deepstar, Screamer and Rodeo deposits in Nevada for Barrick
- Held positions with Newmont and Getty Mining Co. in North America before moving to Barrick Gold

Richard Redfern, M.Sc., Board Member

- Certified Professional Geologist with 35 years exploration and mining experience worldwide
- Held positions as Senior Exploration Geologist with Barrick Gold in Mexico, VP Exploration for Goldstake Explorations in South Dakota and Australia and has worked for Homestake Mining in the western U.S.
- Extensive exploration experience on gold and porphyry-type prospects in the southwestern U.S., Mexico and Canada
- Was instrumental in the recent discovery of the Moly Dome molybdenum-rhenium-gold-silver porphyry deposit in northern Nevada

Bryan Wilson, B.Sc., Board Member

- 30+ years in geological and senior management positions in resource exploration and mining
- The Director of Exploration Business Development for Centerra Gold since September 2008
- Financial roles – Mining Analyst for C.M. Oliver and Dominick & Dominick Securities, Corporate Finance Specialist for Thames Capital



TSX.V | DYG
FWB | D5G
OTC | DGDCF

Ivy Chong

Tel: **604.633.2100**

ichong@dynastygoldcorp.com

www.dynastygoldcorp.com