



SEARCH MINERALS GCF

JANUARY 2020

About Search Minerals: Search Minerals Inc. (TSXV: SMY) is a TSX Venture Exchange listed Company. Led by a proven management team and board of directors, Search is focused on finding and developing resources within the emerging Port Hope Simpson Critical Rare Earth Element (“**CREE**”) District of South East Labrador, Canada. (the “**District**”).

The Company controls a belt 70 km long and 8 km wide including its 100% interest two 43-101 compliant resources – **FOXTROT and DEEP FOX**. The District is road accessible and at tidewater. Further exploration work in 2019 continues at “Fox Meadow” as another significant new CREE prospect very similar to and in close proximity to the original FOXTROT discovery.

WHY INVEST IN SEARCH MINERALS

- ✓ Lowest CAPEX project in North America - \$ 152M (\$CDN), 1000 tonnes per day, scalable processing technology to align production rate with CAPEX
- ✓ Pre-tax – NPV₁₀ - \$ 93M, IRR – 22% Payback period – Pre-tax 3.5 yrs After-tax 4.4 yrs
- ✓ Patented Processing Technology – produced 99% high purity mixed REO concentrate during \$ 1.9M pilot plant operation, and \$ 800,000 optimization pilot plant
- ✓ 100% owned Foxtrot and Deep Fox Resources; Fox Meadow and Silver Fox advanced prospects, multigenerational opportunity
- ✓ Strong support from Federal/Provincial governments, NunatuKavut Community council (Indigenous partner) and local communities
- ✓ Macro Developments – US / Canada collaboration to create North American rare earth supply chain, Defense Production Act Title III, possible future supply constraints with Electrification expansion
- ✓ Led by a proven management team and Board of Directors, Insider ownership greater than 38%

Resources

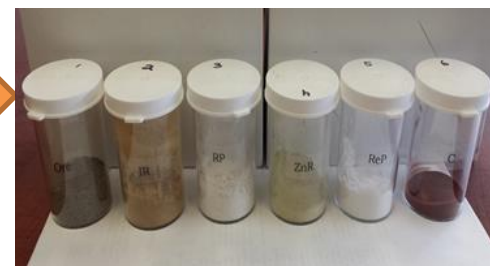
- Foxtrot (43-101 compliant)
- Deep Fox (43-101 compliant)

Metallurgy

- Build Demonstration plant
- Separate Concentrate into Oxides

Environmental and Permitting

- Baseline started
- Combine Deep Fox and Foxtrot



Production Year

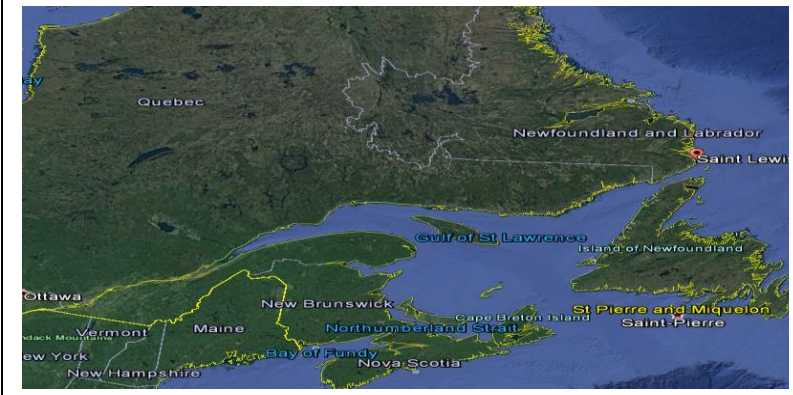
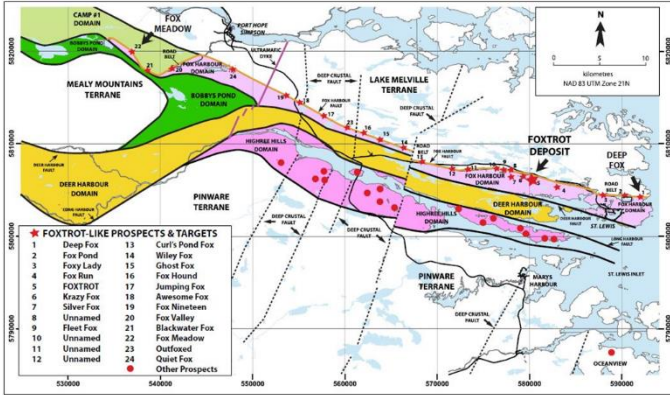
2023

The preliminary economic assessment is preliminary in nature and includes inferred mineral resources that are considered too speculative geologically to have the economic considerations applied to them that would enable them to be categorized as mineral reserves, and there is no certainty that the preliminary economic assessment will be realized. The preliminary economic assessment includes the results of an economic analysis of mineral resources. Mineral resources are not mineral reserves and do not have demonstrated economic viability.



SEARCH MINERALS GCF JANUARY 2020

THE DISTRICT



DEEP FOX and FOXTROT RESOURCES

Project	Cut off (C\$/t/NSR)	Tonnage (000's)	Nd ppm	Pr ppm	Dy ppm
DEEP FOX					
Indicated	≥ 160	2,293	1,498	406	207
Inferred	≥ 160	3,830	1,335	360	182
TOTAL		6,123			
FOXTROT					
Indicated	≥ 165	7,392	1,485	397	191
Inferred	≥ 260	1,958	1,576	423	199
TOTAL		9,350			

INVESTOR INFORMATION:

Shareholder Information – December 31, 2019

Listed:	TSX:V:SMY
Shares O/S	228,775,848
Warrants:	40,864,434
Options:	17,775,000
Fully Diluted O/S	287,415,282

CONTACT US:

Search Minerals Inc
 #108, 901 West Third Street
 North Vancouver, B.C.
 V7P 3P9
 T: 604-998-3432
 F: 604-608-5717
 E: info@searchminerals.ca
 W: searchminerals.ca

MANAGEMENT:

Greg Andrews, President & CEO
 David Dreisinger, VP Metallurgy
 Dr. Randy Miller, VP Exploration
 Matthew Anderson, CFO

DIRECTORS:

Greg Andrews
 Dr. David Dreisinger
 George Molyviatis
 Jocelyn Bennett
 Leo Power

SAFE HARBOUR STATEMENT:

The following presentation may include certain "forward-looking statements" within the meaning of the United States Private Litigation Reform Act of 1995 and applicable Canadian Securities Laws. All statements other than statements of historical fact, included in the presentation, including without limitation, statements regarding potential mineralization and reserves, exploration results, and future plans and objectives of Search Minerals, are forward-looking statements. Words such as "expect", "anticipate", "estimate", "may", "will", "should", "intend", "believe" and other similar expressions are forward-looking statements. Forward-looking statements are not guarantees of future results and conditions but rather reflect our current views with respect to future events and are subject to risks, uncertainties, assumption and other factors, and actual results and future events could differ materially from those anticipated in such statements. There can be no assurance that such forward-looking statements will prove to be accurate. We base our forward-looking statements on information currently available to us and we do not assume any obligation to update them, except as required by law.

All of the scientific and technical information contained herein has been reviewed and/or prepared by either Dr. Randy Miller, P.Ge. or Dr. David Dreisinger, both being a "Qualified Person" within the meaning of National Instrument 43-101-Standards of Disclosure for Minerals Projects. For further details of the Company's procedures and policies for data verification, the reader is referred to the Company's news releases and other material information available on the Company's website at www.searchminerals.ca or SEDAR at www.sedar.com