

CORPORATE PRESENTATION
November 2020



Newrange Gold Corp.

*Where **Exploration** Intersects **Discovery***

www.newrangegold.com

TSXV: **NRG**

OTCQB: **NRGOF**

FSX: **X6C**



Forward Looking Statement

Except for historical information contained herein, this presentation contains forward looking statements including but not limited to comments regarding predictions and projections. Forward-looking statements address future events and conditions and therefore involve inherent risks and uncertainties. Although Newrange Gold believes that such expectations are reasonable, there can be no assurance that such expectations will prove to be correct, and therefore actual results may differ materially from those currently anticipated in such statements. You are cautioned not to place undue reliance on any such forward looking statements, whether made in this presentation or in any question and answer period related to this presentation.

Gold Exploration Focused On Prolific Regions In Safe Jurisdictions

- Unique opportunity to explore & develop the past-producing, high-grade Pamlico gold district in **Nevada**
- Large, untested target in the prolific **Red Lake** area of NW Ontario
- Well-financed for 2020 and winter 2021 exploration
- Led by a team of successful mine finders and company builders

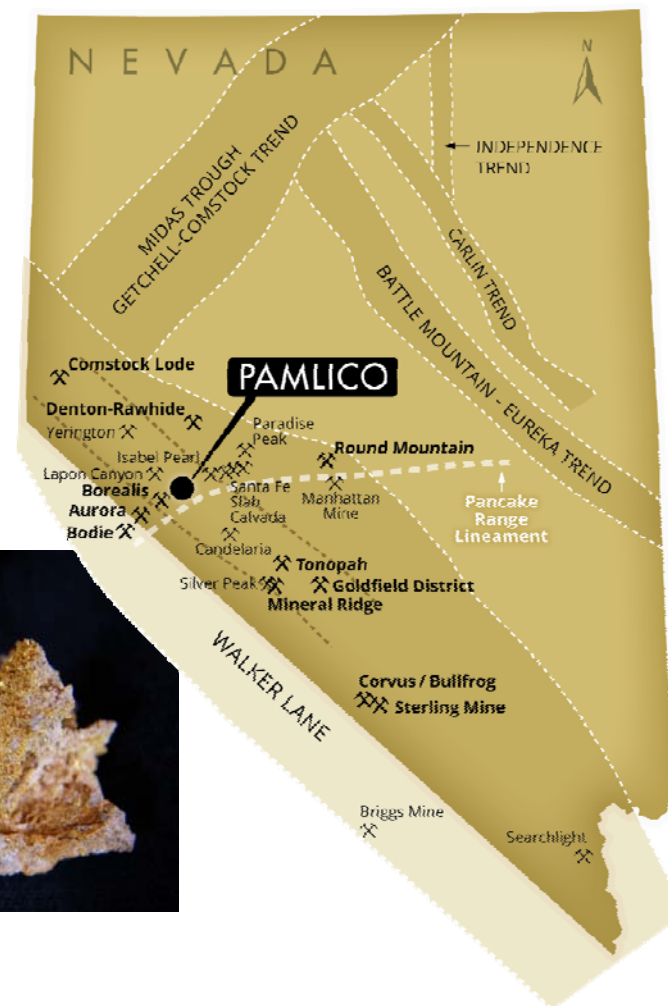
Nevada – ‘Elephant Country’

Nevada

- 5th largest gold producer & 3rd most desirable mining jurisdiction in the world
- 5.4 Moz of gold produced in 2019
- 169.1 Moz of gold produced from 1835-2018

Walker Lane

- NW-SE oriented structural trend hosting many historic and current gold and silver districts and mines
 - Round Mountain
 - Comstock Lode
 - Tonopah
- Over 53 Moz gold, 519 Moz silver produced

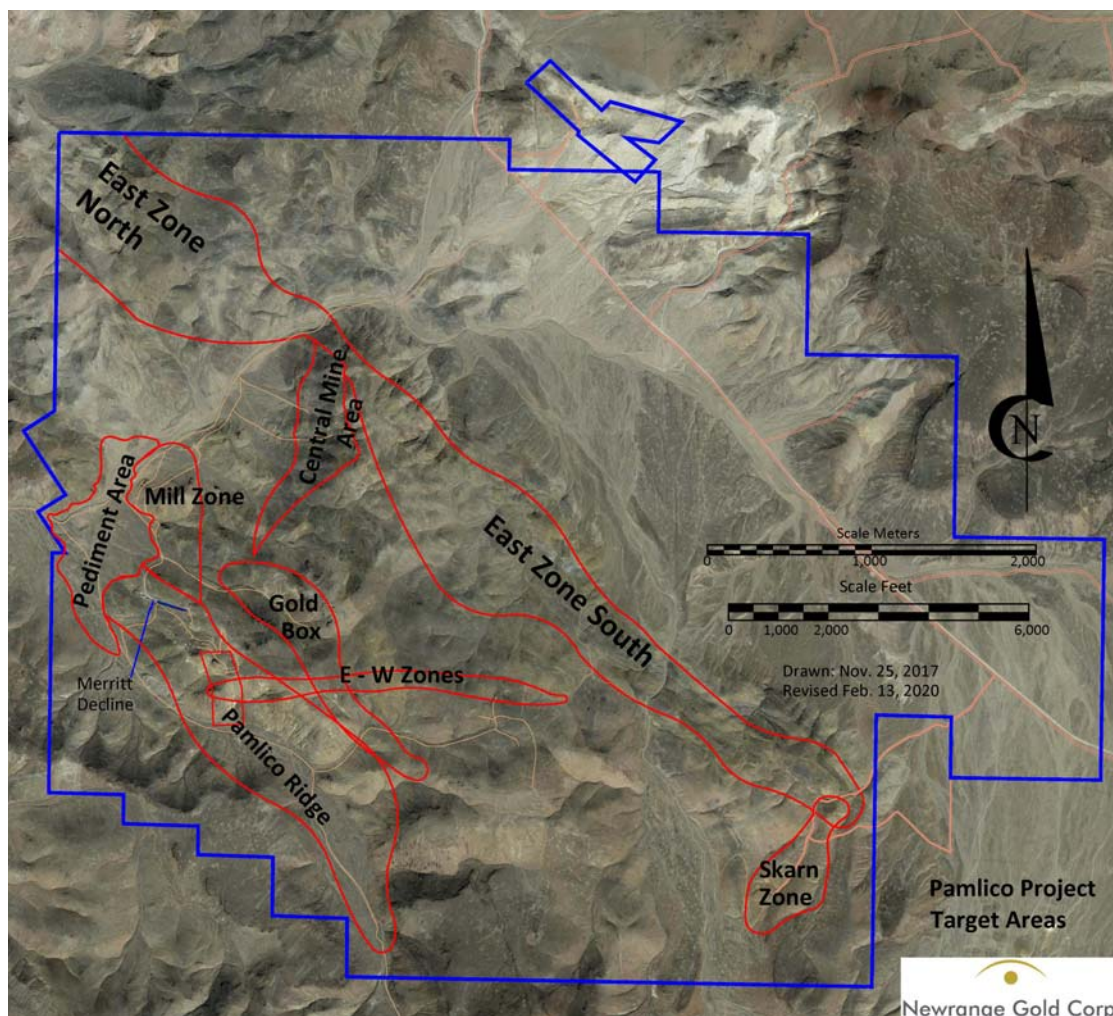


Pamlico Project – A New Discovery in an Old District



- High-grade, volcanic hosted, near surface, oxide gold mineralization in legendary district (1880's-1920's)
- Unique, almost unexplored opportunity - in private hands since 1896
- Excellent Infrastructure
- Exceptional Metallurgy
- District scale property (2,548 hectares)
- Newrange has option to earn 100%
- Multiple targets yet to be tested

District Scale Potential – Target Map



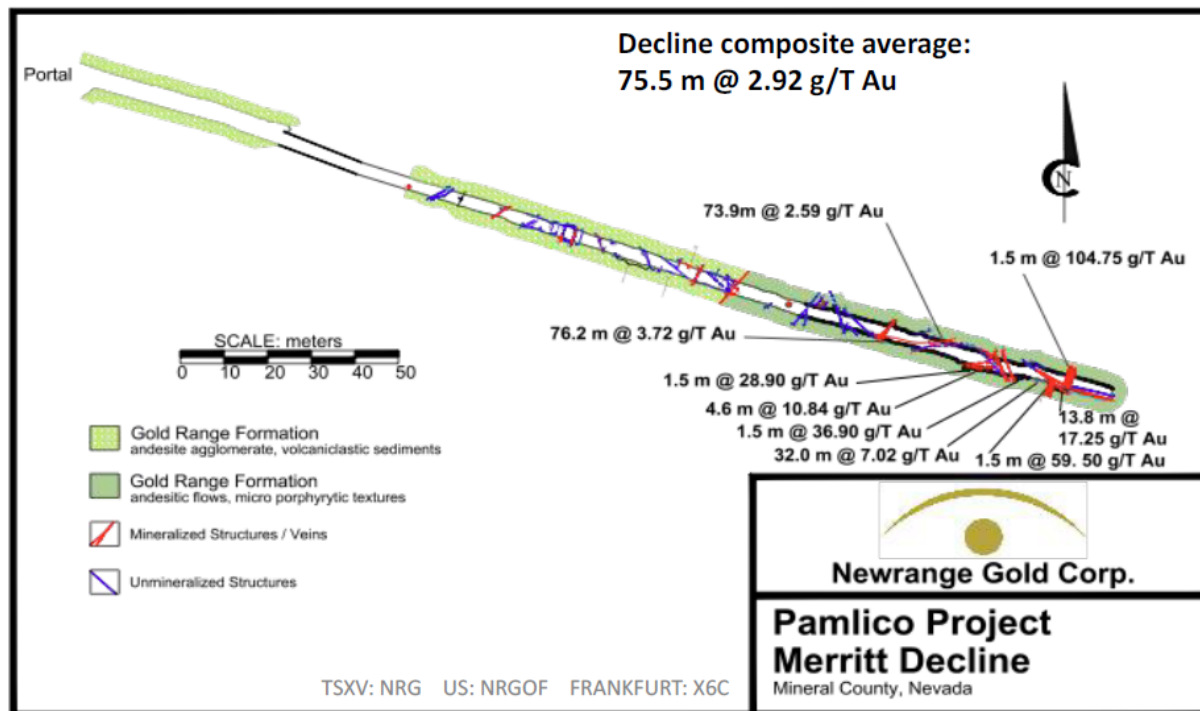
Multiple Targets exceeding 2 x 2km

- Merritt Area (2.92 g/t Au over 75.5m)
- Pamlico Ridge (several historic mines)
 - 1.5 km strike length / 300+ old mine workings
- Pediment Area
 - 1.3 km x 0.7 km zone / 4.7 g/t Au from only outcrop
- Gold Box Canyon
 - 1.5 km strike / Up to 98 g/t Au in outcrop
- Central & Sunset Mines
- East Zone North & South
 - Up to 5.0 g/t Au in outcrop
- Gold Skarn Zone

Merritt Decline Sampling



- 100m, continuous saw cut channel sample interval
- Composite avg.: **75.5m @ 2.92 g/t Au**
- High-grade interval: **13.8m @ 17.25 g/t Au**
- Permits in place to take 1,000 ton bulk sample for geotechnical assessment & large scale metallurgical testing



Pamlico Drilling

Multiple high-grade gold zones with “halos” of disseminated/stockwork material in Merritt Area

Near surface, oxide intercepts – Highlights:

- DH P17-08: **9.1m of 28 g/t Au** (incl. 1.5m of 85 g/t)
- DH P17-10: **6.1m of 98 g/t Au** (incl. 1.5m of 341 g/t)
- DH P17-17: **4.6m of 44 g/t Au** (incl. 0.8m of 244 g/t)

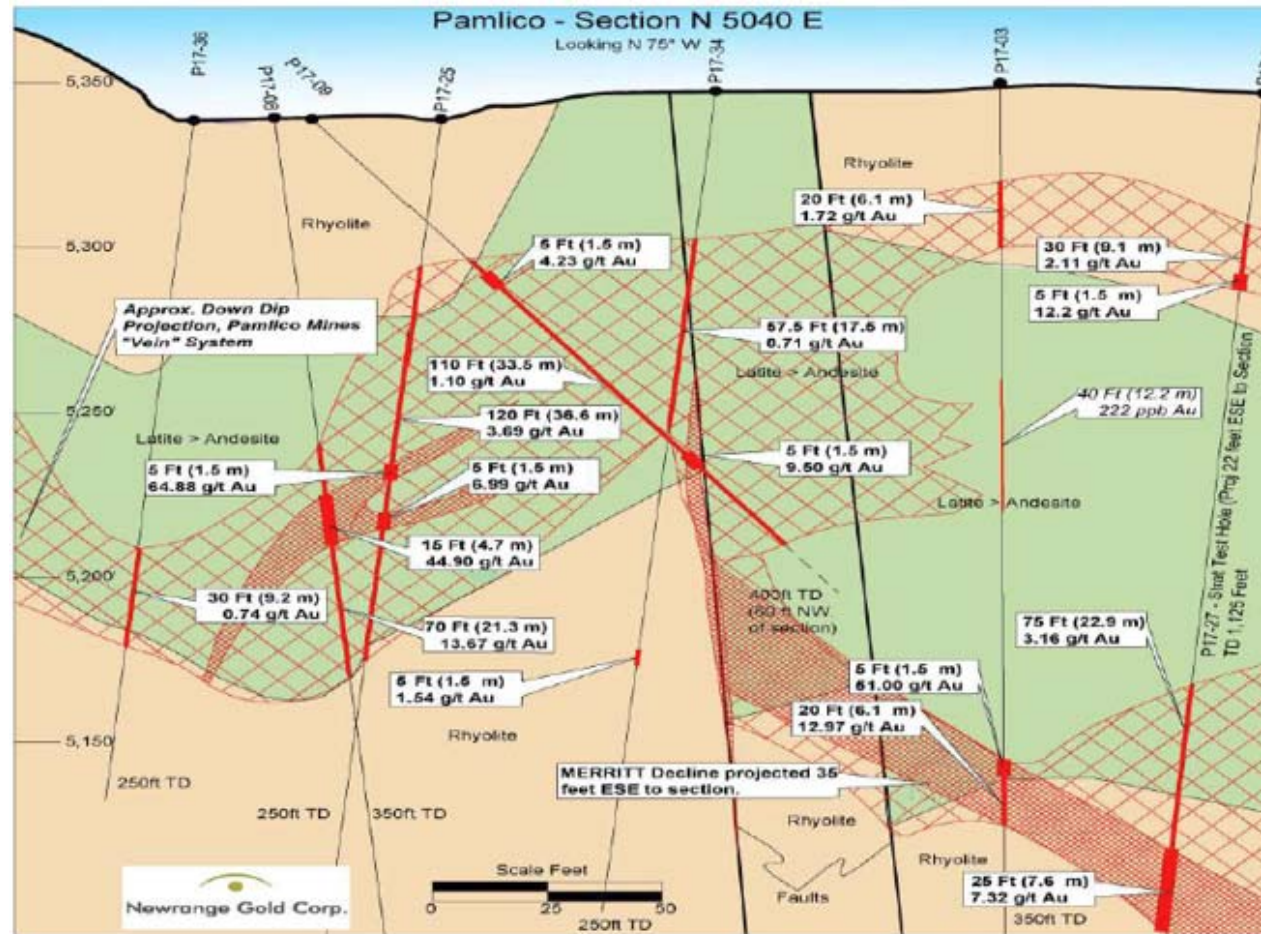
Near surface, oxide “stockwork” intercepts – Highlights:

- DH P17-26: **28.2m @ 4.54 g/t Au** (from 19.8m)
- DH P17-33: **53.4m @ 2.36 g/t Au** (from surface)
- DH P17-26: **39.6m @ 1.48 g/t Au** (from 85.4m)
- Decline – Continuous saw cut channel sampling: **75.5m @ 2.92 g/t Au** (from face)

Recently drilled 34.11 g/t Au over 3.05m within 4.74 g/t Au over 32.01m from a depth of 44.2m in Merritt Area

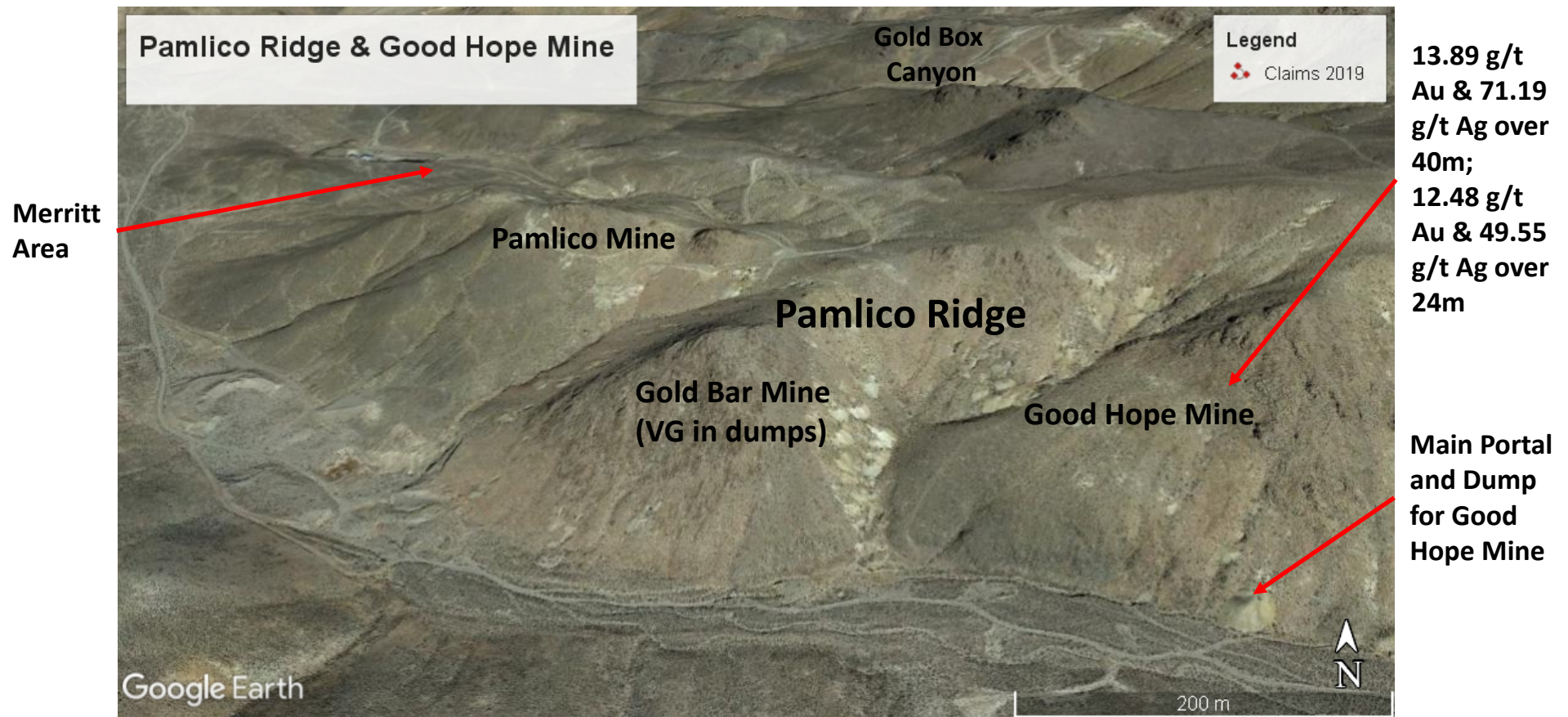
Results indicate potential for lower-grade bulk tonnage deposit with high-grade ‘sweeteners’

Pamlico Drilling



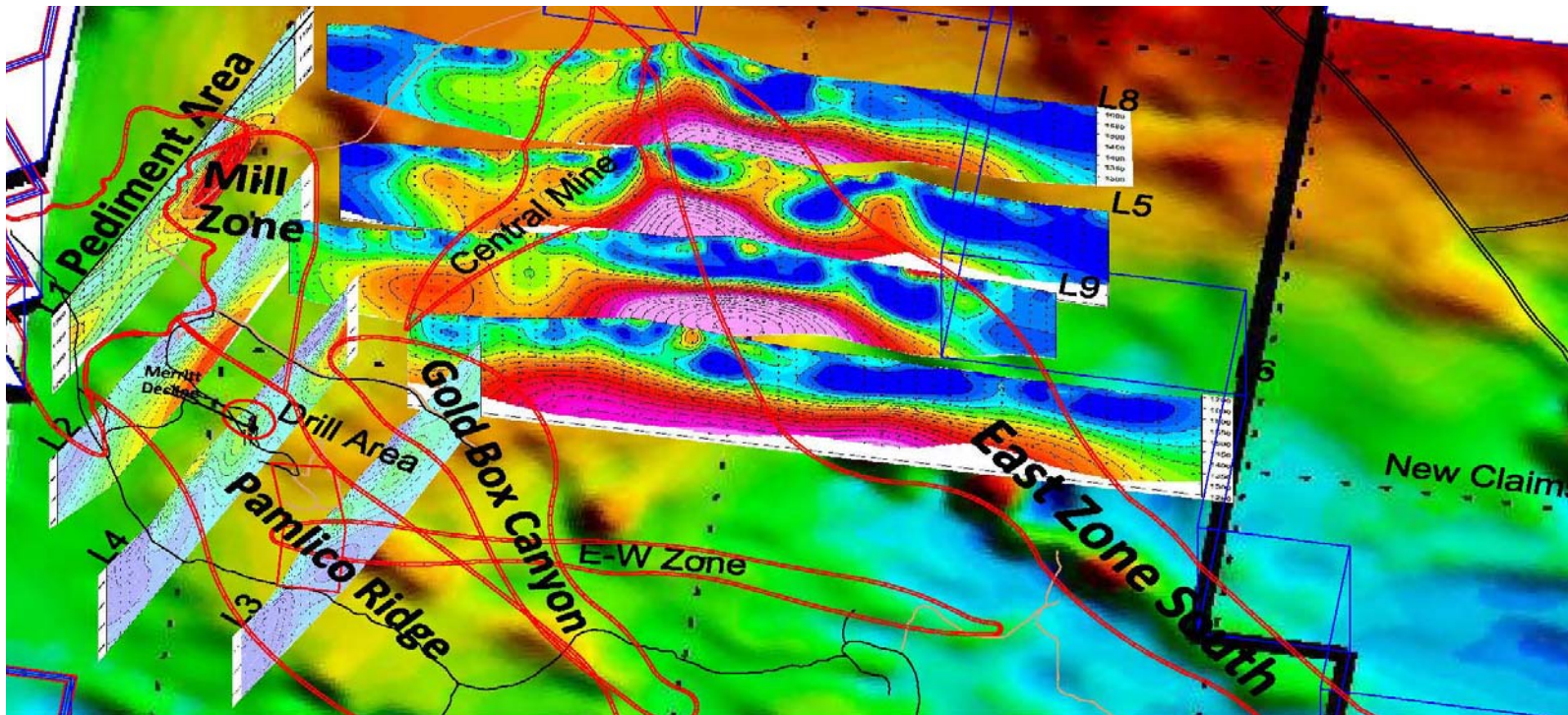
- Latite appears to be preferred host but rhyolite can also be mineralized

Good Hope Mine Underground Sampling



- Underground sampling re-discovered high-grade gold-silver mineralization in upper levels of Good Hope Mine

IP Results



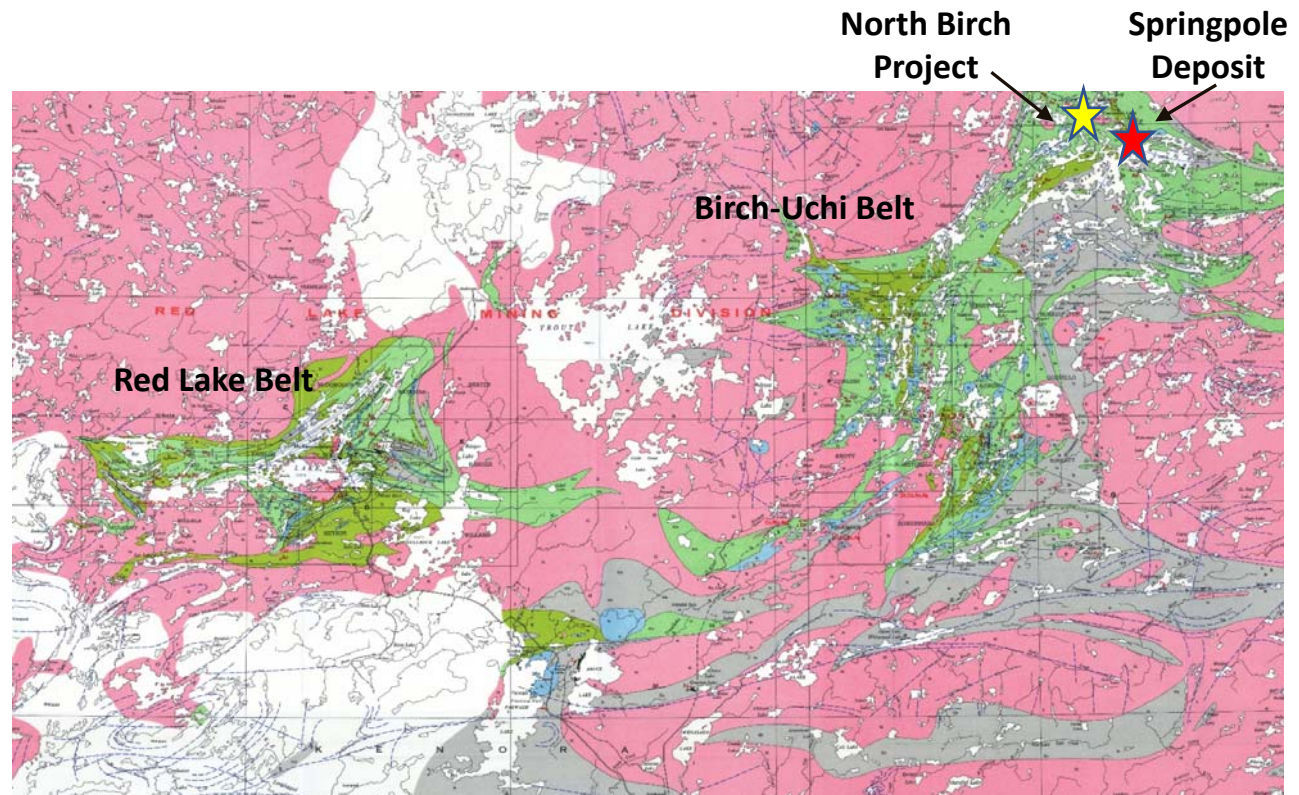
- Multiple anomalies detected, potentially reflecting sulphide mineralization at depth
- Good correlation with gold mineralization in Drill Area & Merritt Decline
- Broad, strong anomaly could represent buried intrusive with sulphides, providing heat & fluids for gold mineralizing system
- Additional claims acquired to ensure we are 'covered' to the east and north
- Multiple new targets for drilling

Current Drilling

- 63 RC holes drilled to date (6,538 meters) this year, with assays pending for the last 26
- Drilling along Pamlico Ridge, around old mine workings, showed both higher grade structures, up to 9.5 g/t over 1.5 m, and wider lower grade intervals such as 0.5 g/t over 41.2 m
- Completed 'first-pass drilling around old mine workings at Gold Box Canyon and Good Hope Mine, and several stand-alone IP targets as well as further fill-in drilling at the Merritt Zone
- Correlation between IP anomalies and gold mineralization appears to be strong - Disseminated pyrite intersected in several holes proves that IP is working - Assays pending
- Diamond drilling may be used to test deeper IP targets and to drill for better geological information

Birch-Uchi Greenstone Belt, Red Lake District

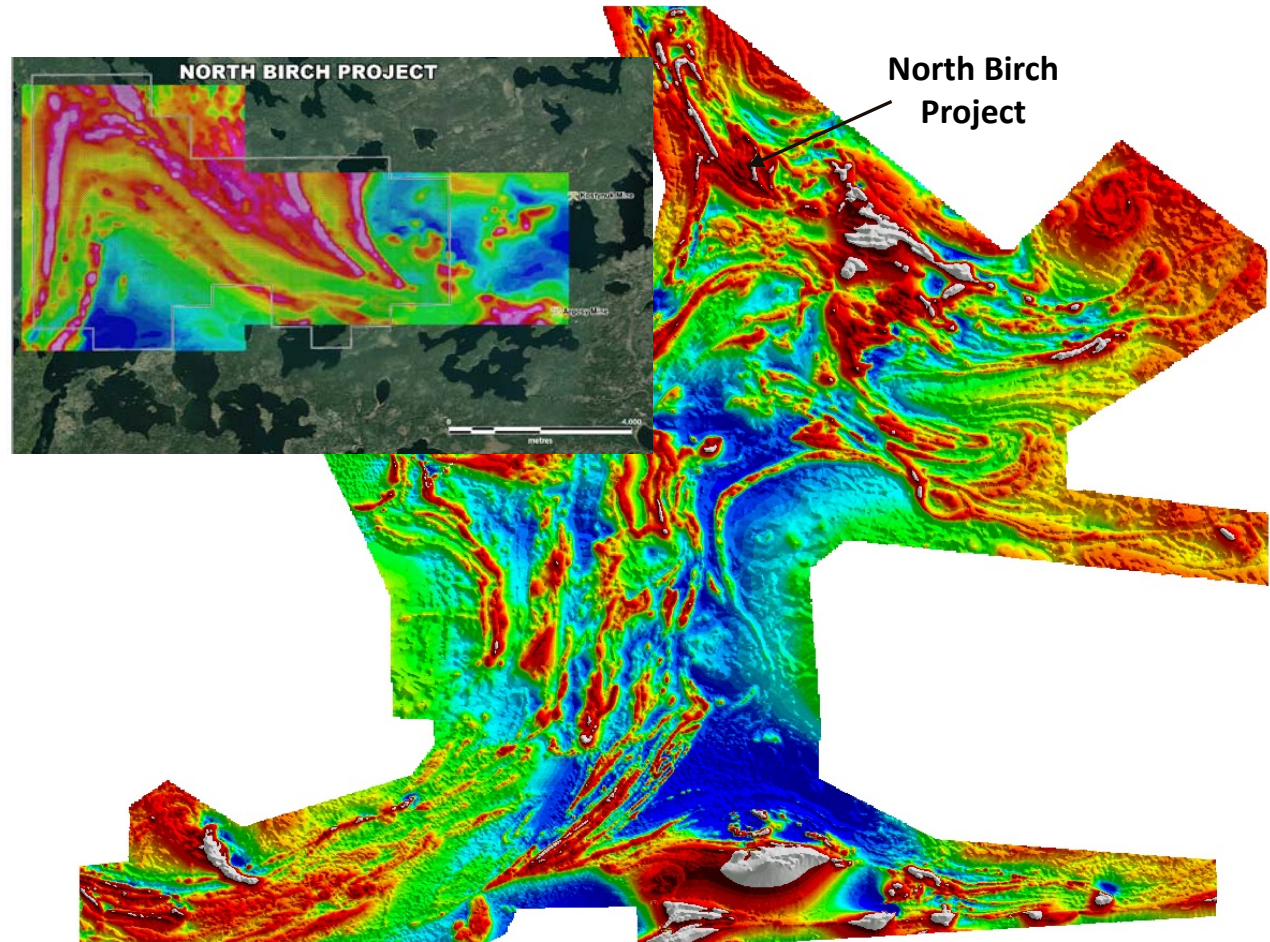
- Next greenstone belt to the east of Red Lake
- Similar geology but three times the size
- Poorly explored due to limited access
- Springpole Gold Deposit (First Mining Gold – 4.7 Moz Au) just 15km to the east of North Birch
- Argosy Gold Mine - 101,875 ounces of gold produced at 12.7g/t. Closed in 1952. 3km from property boundary



North Birch Gold Project

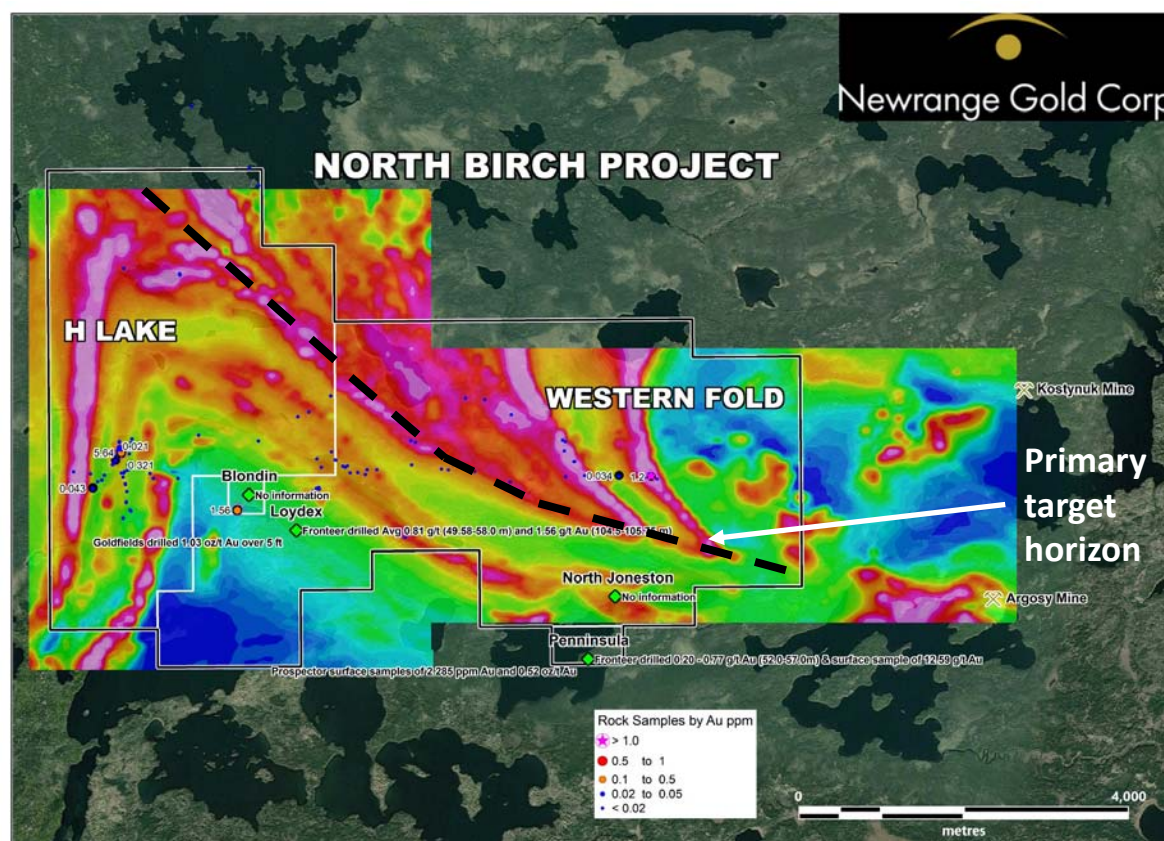
Iron Formation Target

- Folded Iron Formation (IF) is an attractive target for gold mineralization
- IF hosted Au deposits are well known throughout the world
- Largest is Homestake Mine, S. Dakota: 40+ Moz
- Similar geological setting to Musselwhite Mine (Newmont-Goldcorp; 8+ Moz in past production & Reserves), also in NW Ontario



North Birch Gold Project

- 3,850 ha in two contiguous blocks covering the entire Iron Formation package
- Option to earn 100% on both properties
- Several structures cutting the IF
- Only a few kilometres from Argosy Mine & Kostynuk Mine, latter with Au in IF
- Up to 35 g/t Au over 1.6m in historic drilling on North Birch Property but not in IF
- 5.64 g/t Au in grab sample of pyritic IF at H Lake
- Despite multiple gold showings on the property, the IF has never been drilled



Upcoming Catalysts & News Flow

Pamlico

- ~10,000 metres RC & Diamond Drilling at various target zones (6,538m drilled to date), with assays for 26 holes currently pending
- 3D modeling of mineralized zones
- Continued surface mapping & sampling of various zones
- Soil sampling & IP on Skarn Zone

North Birch (Winter 2021)

- Linecutting and IP survey
- Diamond drilling on best targets

Corporate

- Exercise of warrants & options plus monetization of Colombian assets is continuing to fund exploration into 2021. Approx. CA\$2.5 million still to come in next 6 months

Share Structure

	No. Shares
Shares Issued	126,455,143
Warrants	3,143,000
Options	4,526,903
Shares Fully Diluted	134,125,046

As of October 27, 2020

- Recent share price CA\$0.13
- Market Capitalization ~CA\$16.5 million
- Ave. daily trading volume (Canada & US): 1.3 million
- Insiders own 9%
- Institutional ownership ~10%
- Closely held >30%

Analyst coverage: Noble Capital Markets



Contact Us



Newrange Gold Corp.

Phone: +1 (604) 669-0868

Email: info@newrangegold.com

www.newrangegold.com

TSXV: NRG

OTCQB:NRGOF

FSX: X6C

