

CORPORATE PRESENTATION 公司介绍  
January 2021 / 2021年1月



# Newrange Gold Corp.

Where *Exploration* Intersects *Discovery*  
勘探获得发现

[www.newrangegold.com](http://www.newrangegold.com)

TSXV: **NRG**

OTCQB: **NRGOF**

FSX: **X6C**



## Forward Looking Statement 前瞻性陈述

---

*Except for historical information contained herein, this presentation contains forward looking statements including but not limited to comments regarding predictions and projections. Forward-looking statements address future events and conditions and therefore involve inherent risks and uncertainties. Although Newrange Gold believes that such expectations are reasonable, there can be no assurance that such expectations will prove to be correct, and therefore actual results may differ materially from those currently anticipated in such statements. You are cautioned not to place undue reliance on any such forward looking statements, whether made in this presentation or in any question and answer period related to this presentation.*

## Gold Exploration Focused On Prolific Regions In Safe Jurisdictions

### 专注于在安全辖区内的多产地带进行黄金勘探

- Unique opportunity to explore & develop the past-producing, high-grade Pamlico gold district in **Nevada** 在内华达州有生产历史、高品位的Pamlico黄金产区内拥有独一无二的勘探和开发机会
- Large, untested target in the prolific **Red Lake** area of NW Ontario 在安大略省西北部多产的**Red Lake**地区拥有大规模、未经测试的靶区
- Well-financed for winter 2021 exploration / 2021年冬季勘探计划资金充足
- Led by a team of successful mine finders and company builders 领导团队由成功的矿山发现者和公司建设者组成。

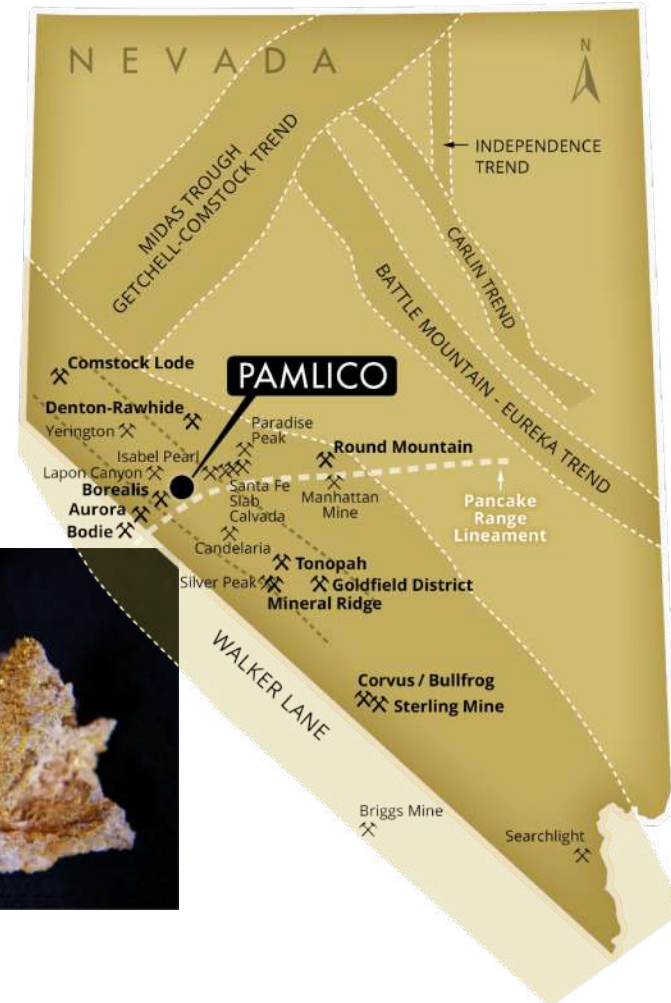
# Nevada – ‘Elephant Country’ 内华达州 – ‘矿产资源富饶’

## Nevada 内华达州

- 5<sup>th</sup> largest gold producer & 3<sup>rd</sup> most desirable mining jurisdiction in the world 全球第五大黄金产区，在最具吸引力的矿业辖区中排名第三
- 5.4 Moz of gold produced in 2019 / 2019年共生产了540万盎司黄金
- 169.1 Moz of gold produced from 1835-2018 / 1835-2018年间共生产了1.691亿盎司黄金

## Walker Lane

- NW-SE oriented structural trend hosting many historic and current gold and silver districts and mines 西北-东南走向的构造趋势带，拥有许多历史和当前的黄金和白银产区和矿山
  - Round Mountain
  - Comstock Lode
  - Tonopah
- Over 53 Moz gold, 519 Moz silver produced 出产了5300万盎司黄金、5.19亿盎司白银



# Pamlico Project – A New Discovery in an Old District

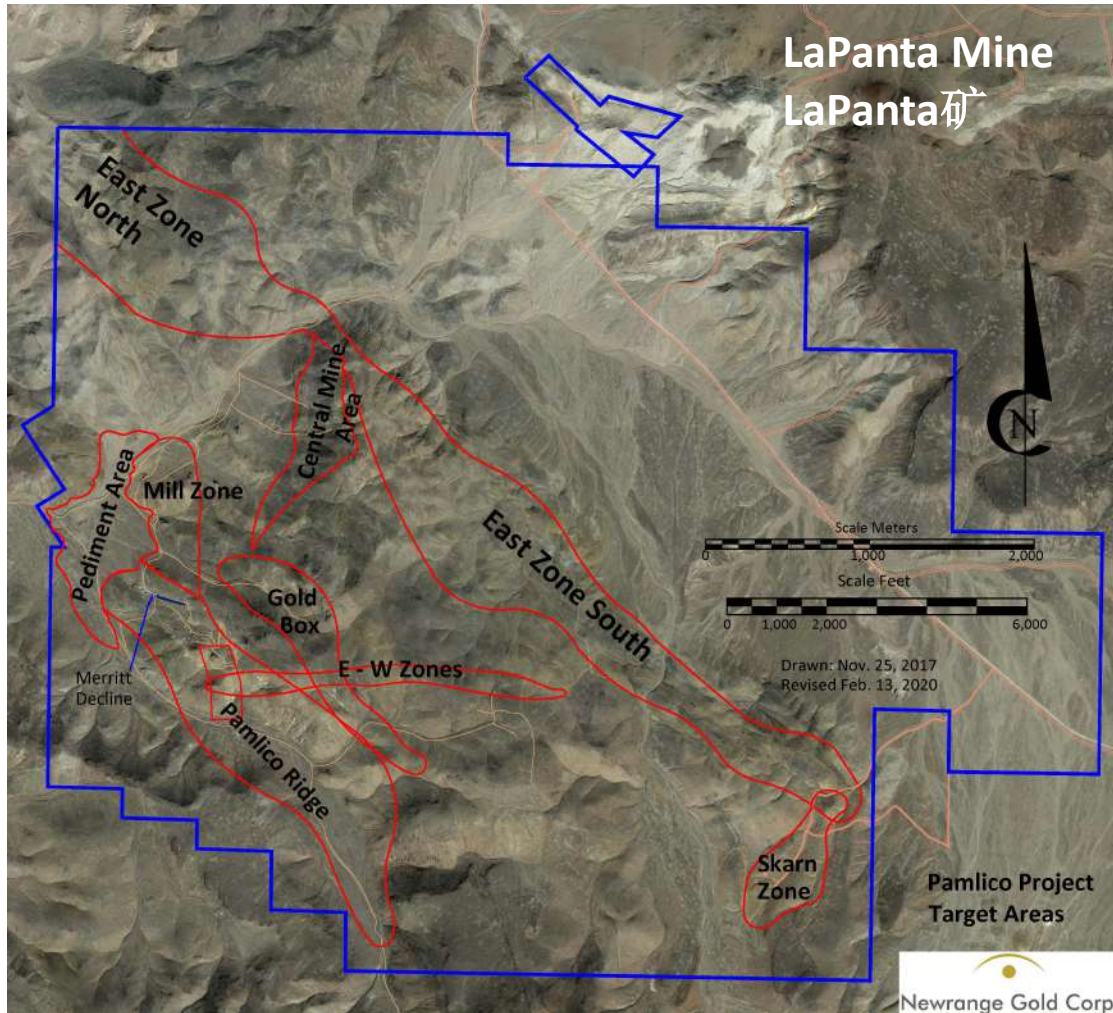
## Pamlico项目 – 一个历史产区中的新发现



- High-grade, near surface, oxide gold mineralization in legendary district (1880's-1920's) 一个传奇产区(19世纪80年代至20世纪20年代)内的高品位、近地表、火山岩型氧化金矿化结构
- Unique, almost unexplored opportunity - in private hands since 1896 一个几乎从未勘探的独特机会—自1896年以来一直由私人拥有
- New geological model suggests multi-million ounce potential 新的地质模型表明有几百万盎司黄金的潜力。
- Excellent Infrastructure 良好的基础设施
- Exceptional Metallurgy 卓越的冶金工艺
- District scale property (2,548 hectares) 地区规模的项目区(2548公顷)
- Newrange has option to earn 100% / Newrange 拥有挣得100%权益的选择权
- Multiple targets yet to be tested 多个有待测试的靶区

# District Scale Potential – Target Map

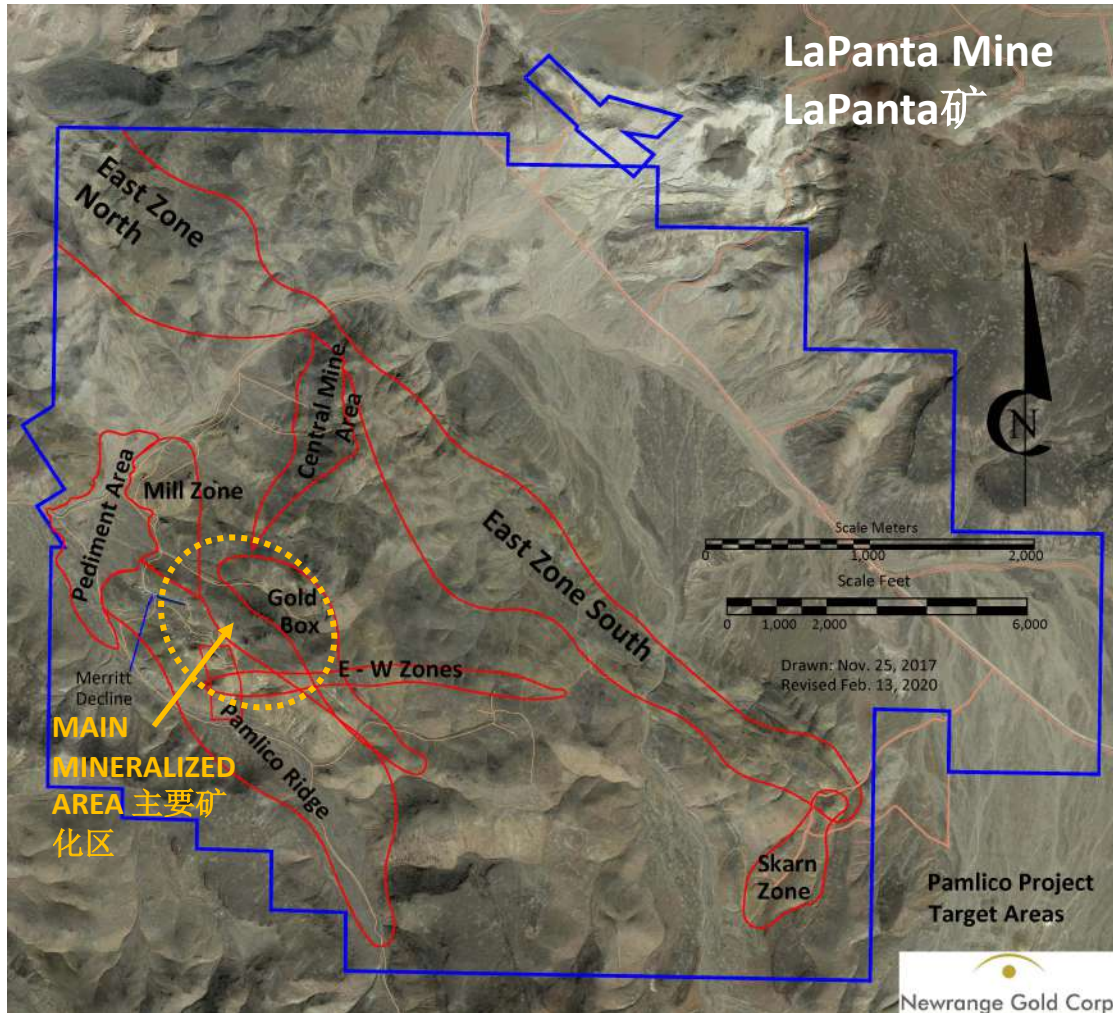
## 地区规模潜力-靶区分布图



### Multiple Targets exceeding 2 x 2km 多个靶区超过2 x 2公里

- Merritt Area / Merritt区
  - Up to 341 g/t Au in drilling 钻探见最高金品位341克/吨。
  - 2.92 g/t Au over 75.5m in Decline 下沉面上见金品位2.92克/吨的75.5米矿段
- Pamlico Ridge & Gold Box Canyon
  - several historic mines 多个历史矿
  - 300+ old mine workings / 300多个历史矿的矿内巷道
  - Up to 98 g/t Au in outcrop 露头中金品位高达98克/吨。
- Skarn Zone 矽卡岩区
  - Garnets on surface 地表上石榴石
  - Gold in soils 土壤含金

# District Scale Potential – Target Map 地区规模潜力-靶区分布图



- Known mineralized area is approximately 850 meters across  
已知矿化区宽约850米
- Merritt Zone has highest grades within Pamlico area / Merritt区是Pamlico区域内品位最高的
- Mineralized zones dip to the northeast, towards interpreted intrusive source  
矿化区向东北方向下倾，走向解释了侵入岩来源
- Skarn Zone to southeast and La Panta Mine in the north are also evidence of intrusive-related mineralization  
东南方向的矽卡岩区，北部的La Panta矿，都是侵入岩相关的矿化结构的证据。

# Pamlico Underground Sampling / Pamlico地下采样

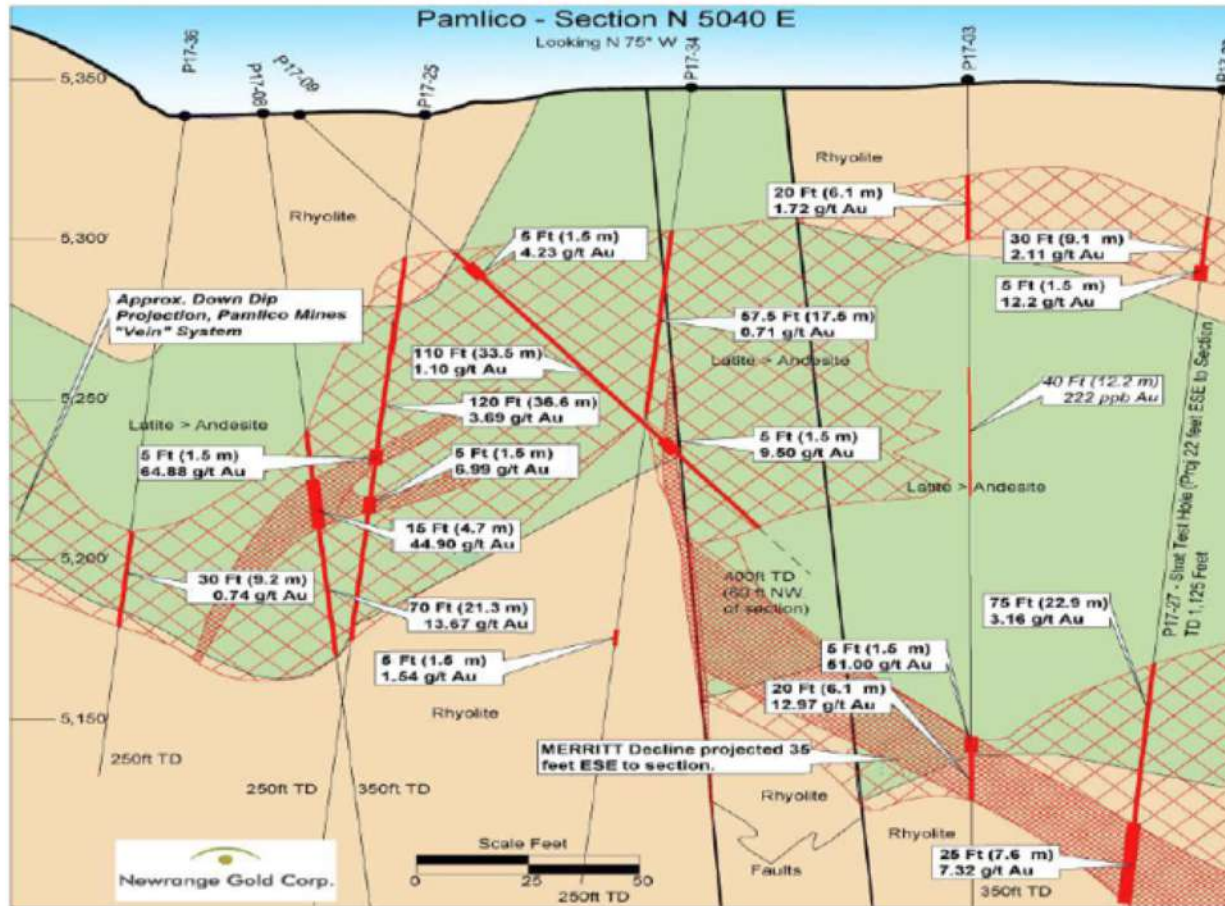


- Underground sampling re-discovered high-grade gold-silver mineralization in several mines and Merritt Decline 地下采样在多个矿山和Merritt下沉面再发现高品位金银矿化结构



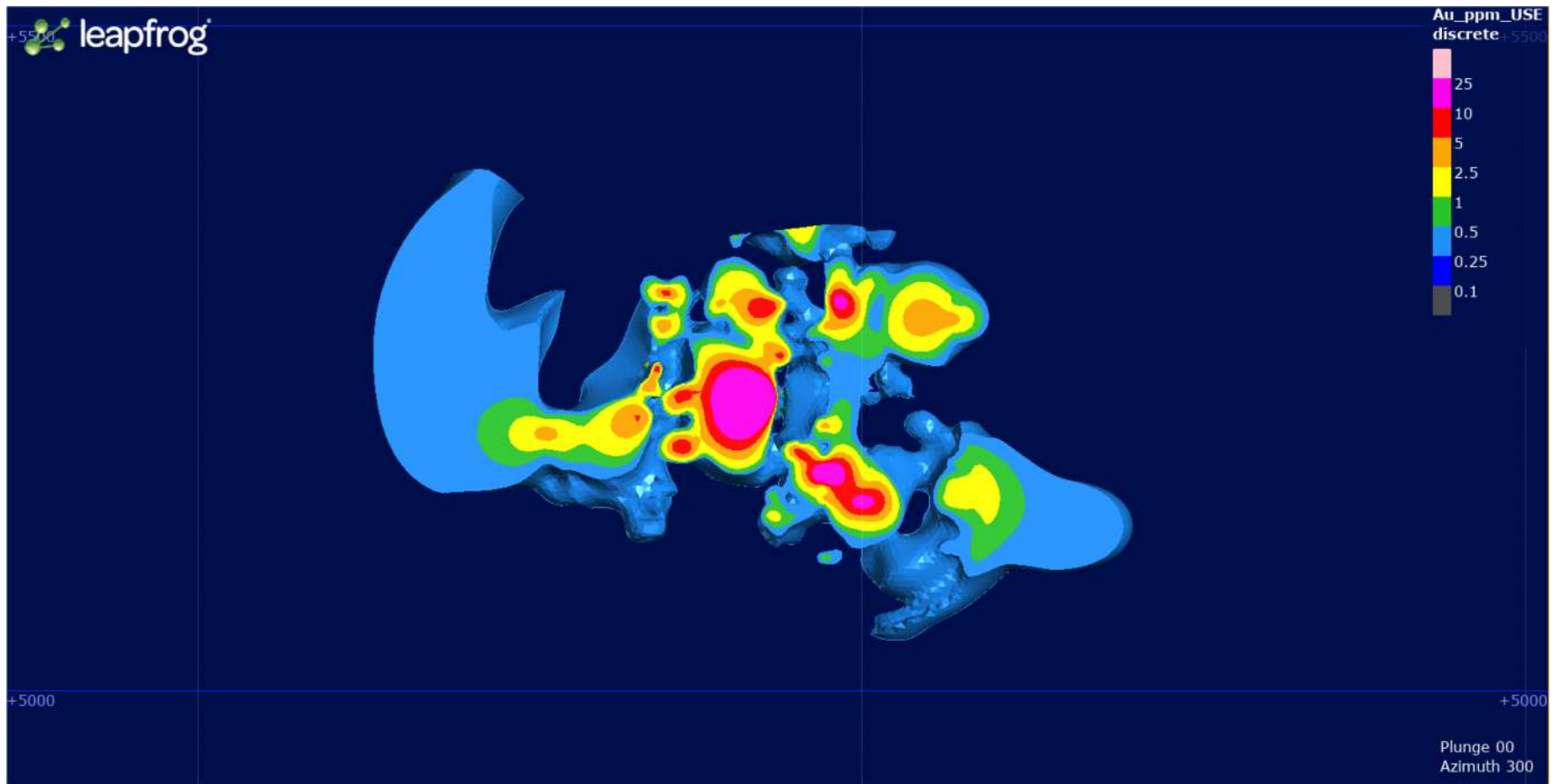
# Pamlico Drilling – Merritt Zone

## Pamlico 钻探 – Merritt 区



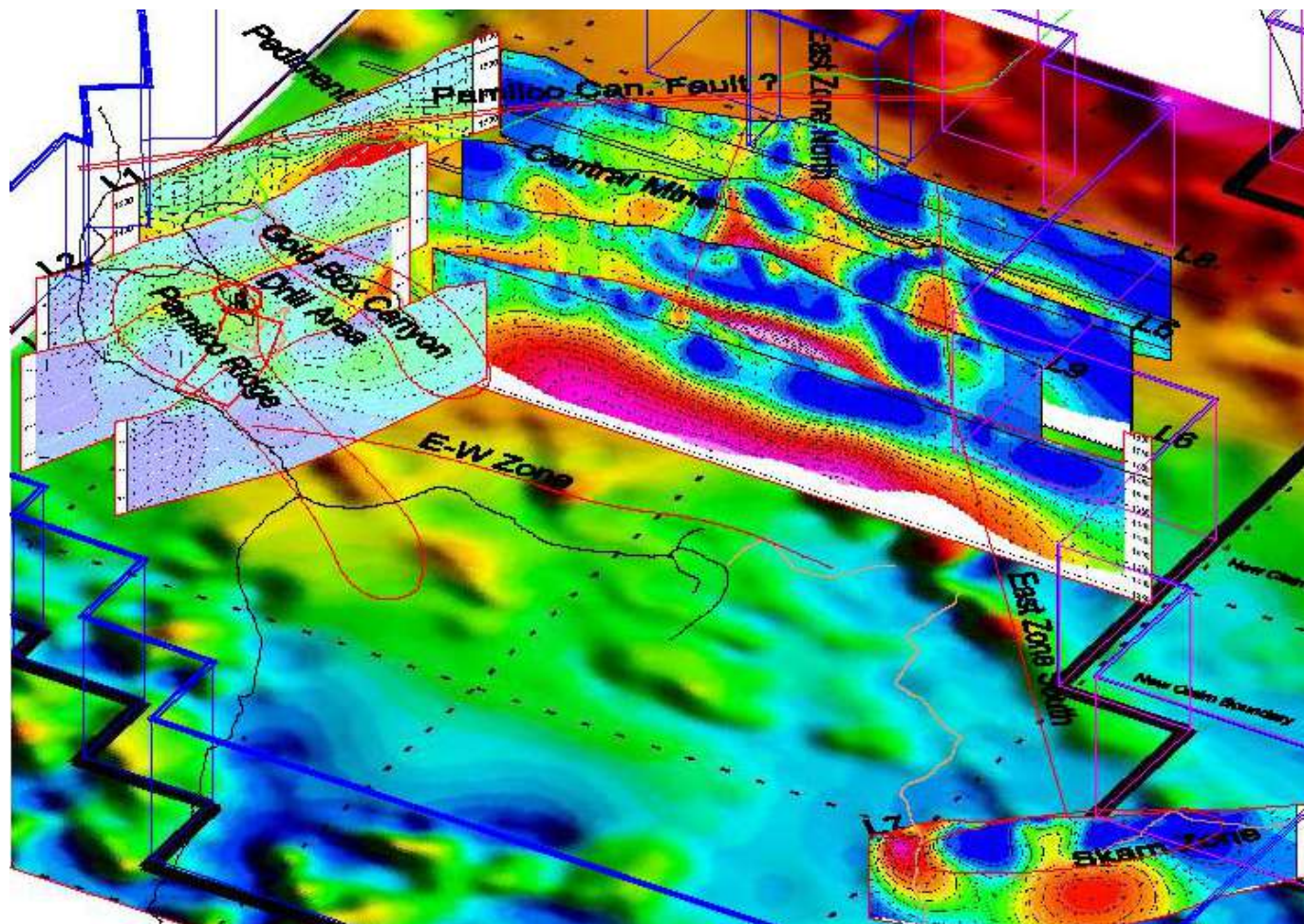
- Shallow, flat-lying, oxide gold mineralization amenable to open pit mining and heap leaching 浅层、平伏氧化金矿化结构，适合露天开采和堆浸

# Merritt Zone 3D Model / Merritt区三维模型



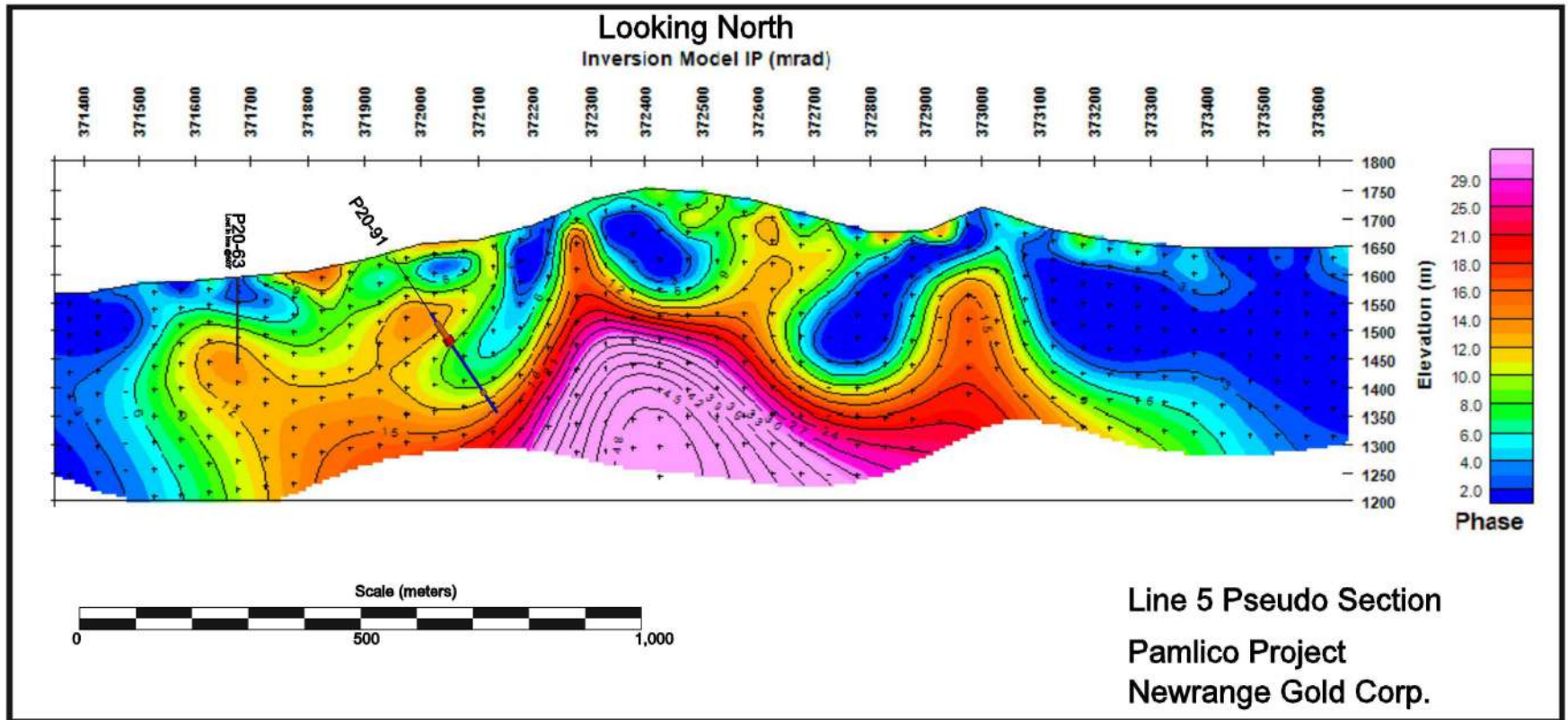
- 3D vertical cross-section of the Merritt Zone (looking NW) demonstrates distribution of gold mineralization and flat-lying nature of zone / Merritt区的三维垂直剖面图表明，分布着黄金矿化结构和区域的平伏特征。

# IP Results 激发极化(IP)结果



- Multiple anomalies detected, reflecting sulphide mineralization at depth 探测到多处异常，说明在深处存在硫化物矿化结构
- Good correlation with gold mineralization in Drill Area & Merritt Decline 钻探区域与 Merritt 下沉面的金矿化结构有良好的相关性
- Broad, strong anomaly could be associated with buried intrusive, providing heat & fluids for gold mineralizing system 广泛、强烈的异常可以与隐伏侵入岩相关，为金矿化系统提供热液

# New Discovery 新的发现区



- Hole P20-091 was drilled to test an 'offshoot' IP anomaly peripheral to the main IP anomaly and intersected a broad zone of gold mineralization from 122.0 to 335.4 m 钻孔P20-091是为了测试主要激发极化(IP)异常区周围的“分支”IP异常区，从122.0米至335.4米见很厚的黄金矿化结构。
- Higher grade portion contained 0.744 grams gold per metric tonne (g/t Au) over 18.3 meters, within a larger envelope of 0.403 g/t Au over 51.8 meters 较高品位部分包含金品位0.744克/吨的18.3米矿段，处于金品位0.403克/吨的51.8米矿段中。

# New Discovery 新的发现区



- Hole P20-091 discovery represents a new style of Au mineralization not previously seen on the Pamlico Project 钻孔P20-091所在的发现区代表着Pamlico项目上一种之前未见过的新型黄金矿化结构。
- Higher grade portion shows strong sericitization and silicification and sits near the base of the zone of oxidation 高品位的部分显示出强烈的绢化和硅化，位于氧化带的底部附近。
- Below this the fresh rock contains at least 1% very fine-grained pyrite 在此之下的新鲜岩石至少含有1%的极细粒黄铁矿。
- This style of alteration & mineralization is interpreted to be related to an intrusive body, likely reflected in the large IP anomaly that is >1 km across 这种类型的蚀变和矿化被解释为与侵入体有关，可能反映在直径大于1公里的大型激发极化异常带中。
- An intrusive at depth would also explain the skarn to the southeast and the La Panta Mine to the north 深处的侵入体也可以解释东南面的矽卡岩和北面的Panta矿。
- **SIGNIFICANT SIZE POTENTIAL!! 巨大潜力!!**

# New Exploration Model 新的勘探模式

Initial focus was to better define and expand known high-grade gold targets and find new ones 最初的重点是更好地界定和扩大已知的高品位金靶区，并寻找新的目标。

- Very successful in Merritt Zone 在Merritt区非常成功
- Less conclusive so far near artisanal historic mines 迄今为止，历史的手工采矿区附近的结论较少。
- Drilling has shown reasonable continuity of low-grade, near-surface, flat-lying, 'oxide' gold mineralization with high-grade pockets, all amenable to open pit mining & low-cost processing 钻探显示，低品位、近地表、平伏的"氧化"金矿化层具有合理的连续性，并有高品位的矿点，这些矿点均可进行露天开采和低成本加工。

Interpretation of evolving geological model and IP surveys have refocused efforts on finding the source of the gold mineralization 对不断发展的地质模型和激发极化勘测的解释，使工作重点重新放在寻找金矿化的来源上。

- New discovery hole P20-091 suggests potential for large intrusive-related gold mineralization is real and significant 新发现区的钻孔P20-091表明，与大型侵入体相关的金矿化潜力是真实存在的，而且意义重大。
- Drilling results from IP targets will increase understanding of both disseminated and high-grade styles of mineralization 激发极化靶区的钻探结果将增加对散布式和高品位矿化类型的了解。
- Using RC drilling to understand near-surface targets will lead to better allocation of funds for deeper drilling at this stage (risk/reward) 利用反向循环钻探来了解近地表靶区，将使现阶段资金更好地分配到更深的钻探中（风险/回报）。

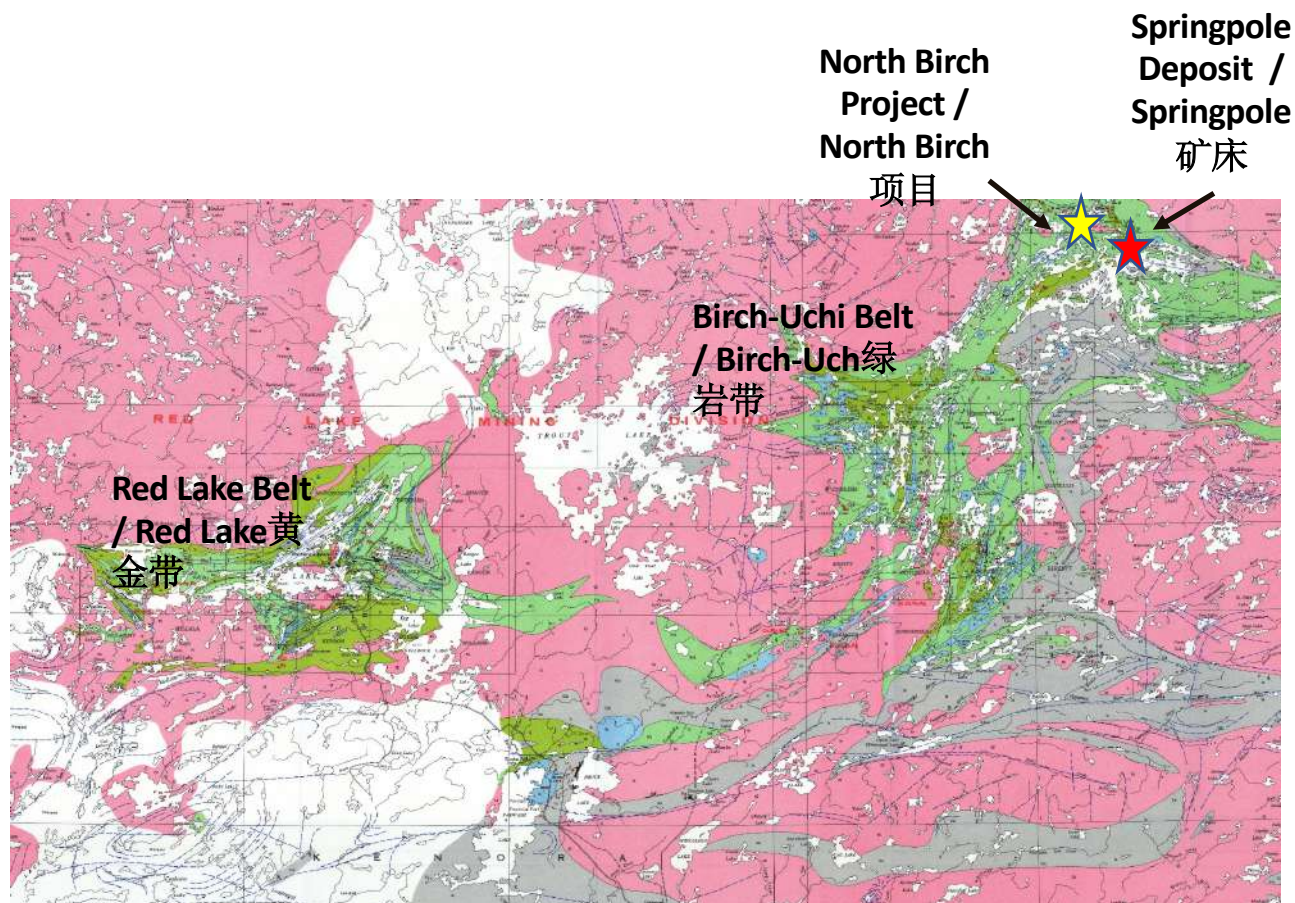
# Current Drilling 当前的钻探

- 69 RC holes (7,565 meters) completed to date (Jan. 16) in this program; Drilling is ongoing, focused on IP targets 截止1月16日共完成69口反向循环钻孔(总长7,565米), 钻探正在进行, 专注于激发极化靶区。
- Drilling along Pamlico Ridge, around old mine workings, showed both higher grade structures, **up to 9.5 g/t over 1.5 m, and wider lower grade intervals such as 0.5 g/t over 41.2 m** 沿Pamlico Ridge和历史矿山工作区域周围的钻探显示, 更高品位的构造, 一段1.5米的矿段中金品位高达9.5克/吨, 以及范围更广阔的品位较低的矿段, 比如金品位0.5克/吨的41.2米矿段。
- Fill-in drilling at the Merritt Zone returned **14.85 g/t Au over 9.15 meters**在Merritt区的加密钻探见金品位**14.85克/吨的9.15米矿段**。
- Completed 'first-pass' drilling around old mine workings at Gold Box Canyon and Good Hope Mine 完成了在Gold Box Canyon和Good Hope矿历史矿山巷道周围的首次钻探
- Several IP targets have shown good correlation between IP anomalies (disseminated pyrite) and gold mineralization 一些激发极化靶区显示了激发极化异常(浸染黄铁矿)和金矿化之间的良好相关性。
- **New discovery in hole P20-091 implies potential for intrusive-related gold system with significant size potential** 钻孔P20-091的新发现表明, 与侵入体相关的大规模金矿化潜力巨大。
- **Main IP anomaly is >1 kilometer across and has yet to be tested** 主要的激发极化异常带长度超过一公里, 尚未测试。
- IP survey being extended to cover entire property 扩大激发极化勘测范围, 覆盖整个项目区。
- Diamond drilling will be used to test deeper IP targets and to drill for better geological information 将使用金刚石钻探测试更深层的IP靶区, 并获得更好的地质信息

# Birch-Uchi Greenstone Belt, Red Lake District

## Red Lake 产区的Birch-Uchi绿岩带

- Next greenstone belt to the east of Red Lake / Red Lake以东下一个绿岩带
- Similar geology but three times the size 地质构造相似但规模是三倍
- Poorly explored due to limited access 由于进入有限所以勘探严重不足
- Springpole Gold Deposit (First Mining Gold – 4.7 Moz Au) just 15km to the east of North Birch / Springpole金矿床(First Mining Gold – 470万盎司黄金)就在North Birch绿岩带以东15公里
- Argosy Gold Mine - 101,875 ounces of gold produced at 12.7g/t. Closed in 1952. 3km from property boundary / 1952年关闭的Argosy金矿历史上总共生产了101,875盎司黄金，平均金品位12.7克/吨。距离项目区边界仅3公里





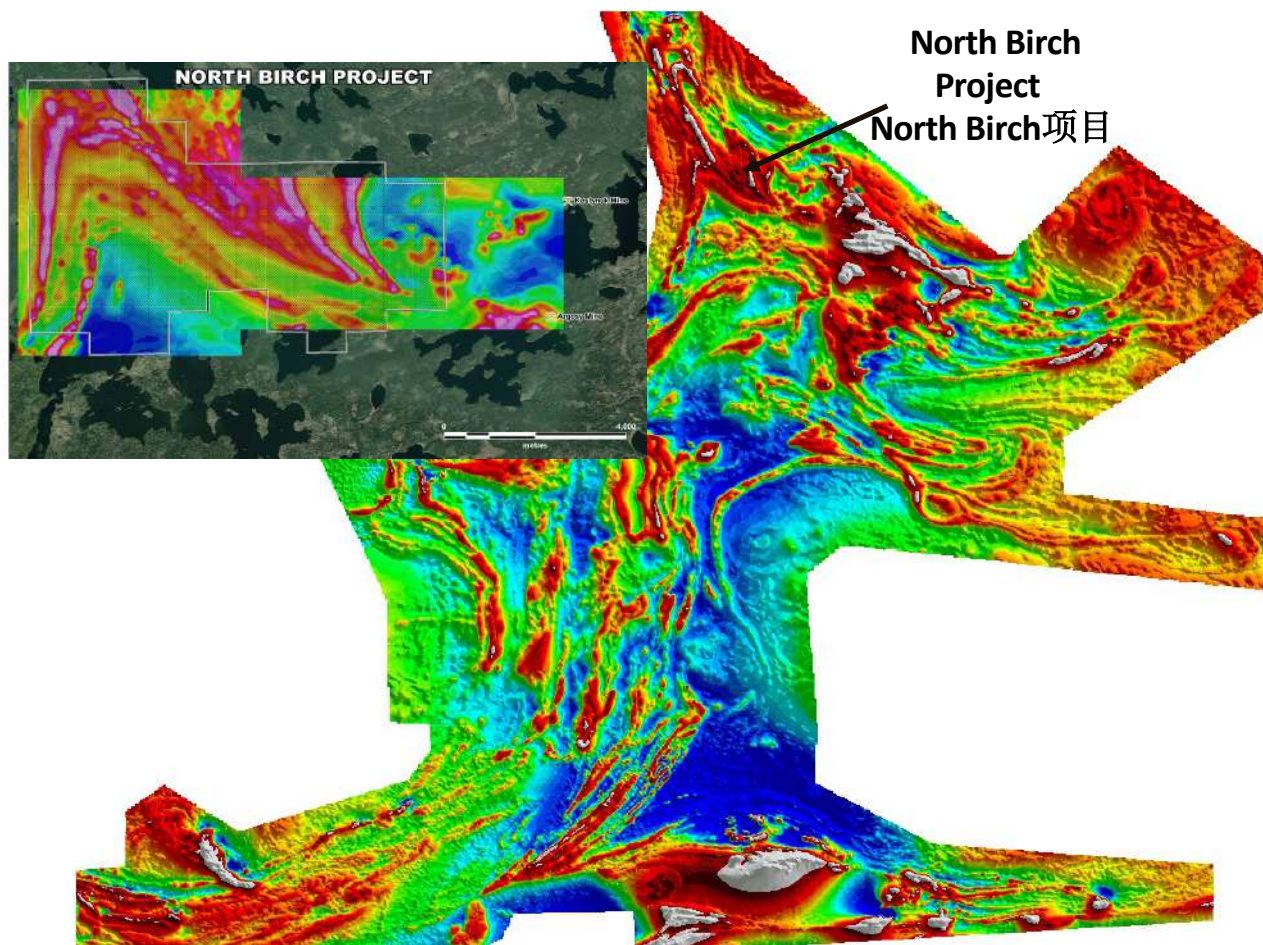
# North Birch Gold Project

## North Birch黄金项目

### Iron Formation Target

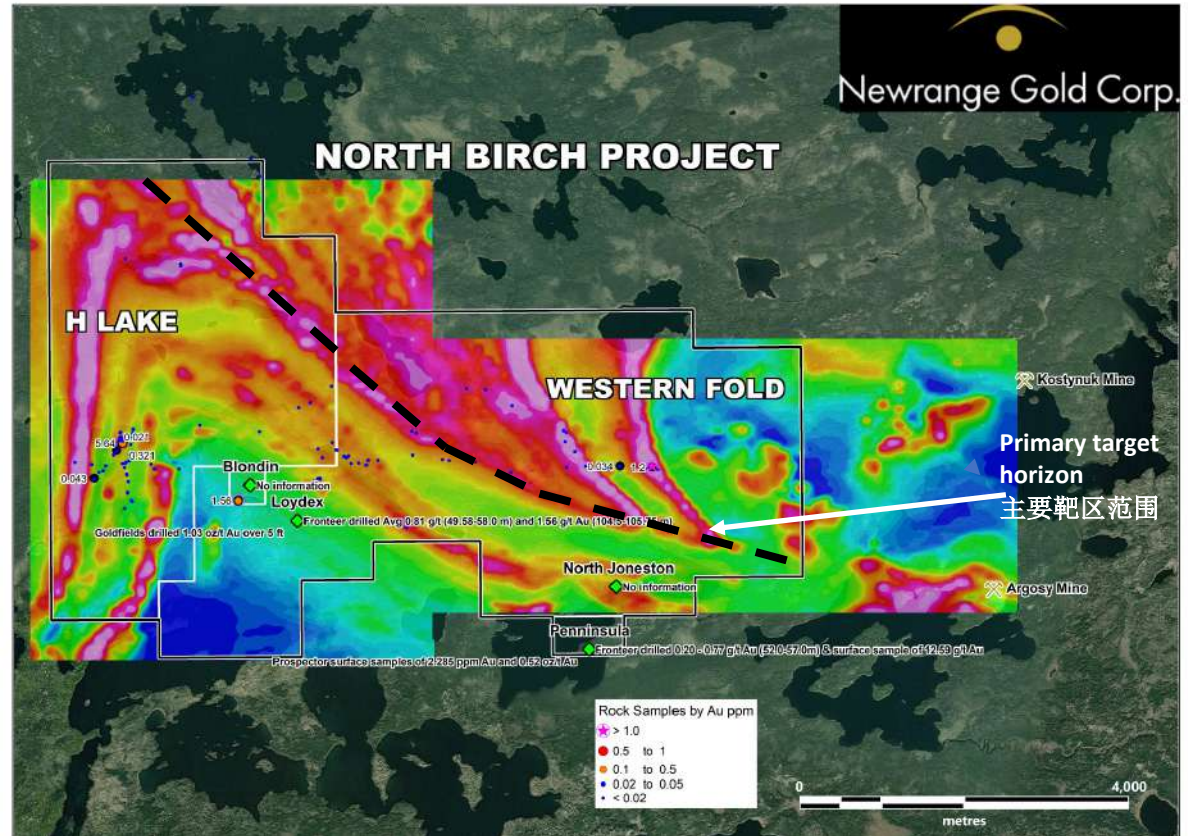
#### 含铁岩层靶区

- Folded Iron Formation (IF) is an attractive target for gold mineralization  
褶皱含铁岩层是很有吸引力的金矿化靶区
- IF hosted Au deposits are well known throughout the world  
含铁岩层金矿床在世界各地都很有名
- Largest is Homestake Mine, S. Dakota: 40+ Moz  
最大的是南达科塔州的Homestake矿：超过4000万盎司
- Similar geological setting to Musselwhite Mine (Newmont-Goldcorp; 8+ Moz in past production & Reserves), also in NW Ontario  
地质环境与同样位于安大略省西北部的Musselwhite矿(Newmont-Goldcorp; 历史产量和储量超过800万盎司)类似



# North Birch Gold Project North Birch黄金项目

- 3,850 ha in two contiguous blocks covering the entire Iron Formation package两个连续的矿权区块共3850公顷，覆盖了整个含铁岩层区域
- H Lake 100% owned; earning 100% on Western Fold 拥有H Lake的100%权益，正在挣得Western Fold的100%权益。
- Several structures cutting the IF多个构造带切入含铁岩层区域
- Only a few kilometres from Argosy Mine & Kostynuk Mine, latter with Au in IF 距离Argosy矿和Kostynuk矿仅几公里，后者在含铁岩层中已发现黄金
- Up to 35 g/t Au over 1.6m in historic drilling on North Birch Property but not in IF 在North Birch项目区的历史钻探获得金品位高达35克/吨的1.6米矿段，但未对含铁岩层进行钻探
- 5.64 g/t Au in grab sample of pyritic IF at H Lake 在H Lake随机采集的黄铁矿含铁岩层样本中金品位5.64克/吨
- Despite multiple gold showings on the property, the IF has never been drilled 尽管在该项目区已经确定了多个黄金表象区，但含铁岩层区域从未被钻探过



# Upcoming Catalysts & News Flow 未来催化剂和新闻

## Pamlico

- Continued RC & Diamond Drilling at various target zones 在多个靶区继续反向循环钻探和金刚石钻探。
- Extension of IP coverage over entire property 扩大激发极化勘测的范围至整个项目区。
- 3D modeling of mineralized zones 正在对矿化区域进行3D建模
- Continued surface mapping & sampling of various zones 继续对不同区域进行地表测绘和采样

## North Birch

- Linecutting and IP survey 线切割和激发极化勘测
- Diamond drilling on best targets 对最好的靶区进行金刚石钻探

## Corporate 公司层面

- Monetization of Colombian assets is providing non-dilutive funding for exploration in Q1 2021. Approx. CA\$1.5 million still to come in next 2 months. 将哥伦比亚资产货币化为2021年第一季度的勘探提供资金，不会稀释股东权益。未来两个月将有约150万加元。

# Share Structure 股本结构

	No. Shares
<b>Shares Issued</b> 已发行股票	<b>127,055,143</b>
<b>Warrants</b> 认股权证	3,143,000
<b>Options</b> 期权	4,049,903
<b>Shares Fully Diluted</b> 完全稀释后总股数	<b>134,248,046</b>

As of January 15, 2021  
截止2021年1月15日

- Recent share price CA\$0.11 最近的股价0.11加元
- Market Capitalization ~CA\$14 million 市值约为1400万加元
- Ave. daily trading volume (Canada & US): 675,000 日均成交量(加拿大和美国): 67.5万股
- Insiders own 9% 内部人士持股比例为9%
- Institutional ownership ~10% 机构持股比例约10%
- Closely held >30% 关联方持股超过30%



Analyst coverage 分析师评级: Noble Capital Markets

Contact Us



Newrange Gold Corp.

Phone 电话: +1 (604) 669-0868

Email 电邮: [info@newrangegold.com](mailto:info@newrangegold.com)

[www.newrangegold.com](http://www.newrangegold.com)

TSXV: NRG

OTCQB:NRGOF

FSX: X6C