

CORPORATE PRESENTATION
March 2021



Newrange Gold Corp.

*Where **Exploration** Intersects **Discovery***

www.newrangegold.com

TSXV: **NRG**

OTCQB: **NRGOF**

FSX: **X6C**



Forward **Looking** Statement

Except for historical information contained herein, this presentation contains forward looking statements including but not limited to comments regarding predictions and projections. Forward-looking statements address future events and conditions and therefore involve inherent risks and uncertainties. Although Newrange Gold believes that such expectations are reasonable, there can be no assurance that such expectations will prove to be correct, and therefore actual results may differ materially from those currently anticipated in such statements. You are cautioned not to place undue reliance on any such forward looking statements, whether made in this presentation or in any question and answer period related to this presentation.

District Scale Gold Exploration In Prolific Regions In Safe Jurisdictions

- Unique opportunity to explore & develop the past-producing, high-grade Pamlico gold district in **Nevada**
- Large, untested target in the prolific **Red Lake** area of NW Ontario
- Both projects have district scale potential
- Led by a team of successful mine finders and company builders

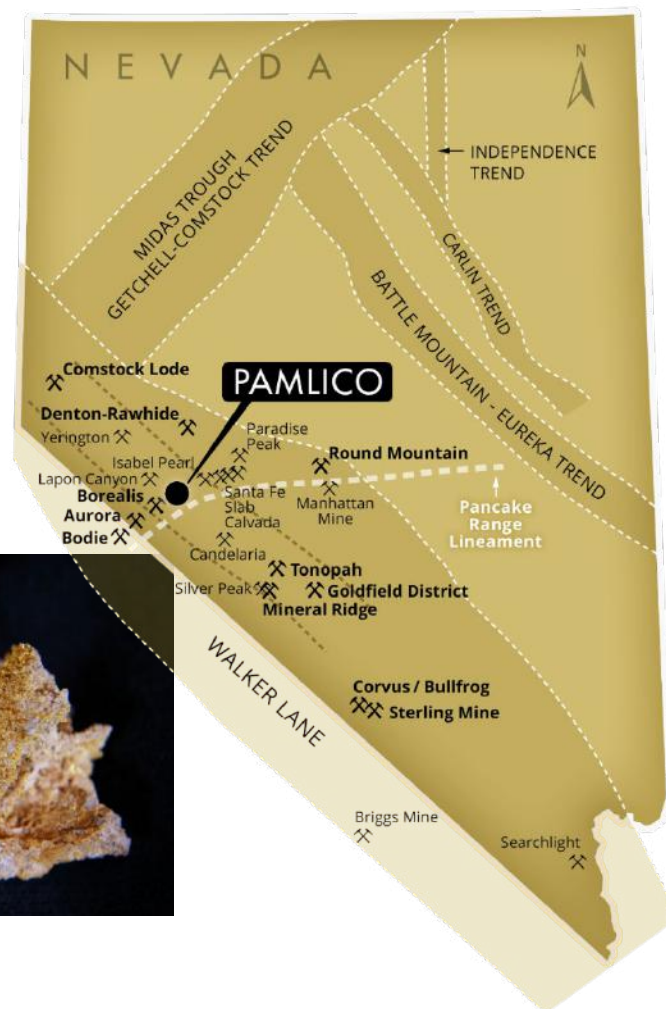
Nevada – ‘Elephant Country’

Nevada

- 5th largest gold producer & most desirable mining jurisdiction in the world
- 5.4 Moz of gold produced in 2019
- 169.1 Moz of gold produced from 1835-2018

Walker Lane

- NW-SE oriented structural trend hosting many historic and current gold and silver districts and mines
 - Round Mountain
 - Comstock Lode
 - Tonopah
- Over 53 Moz gold, 519 Moz silver produced



Pamlico Project – Legendary district (1880's-1920's)



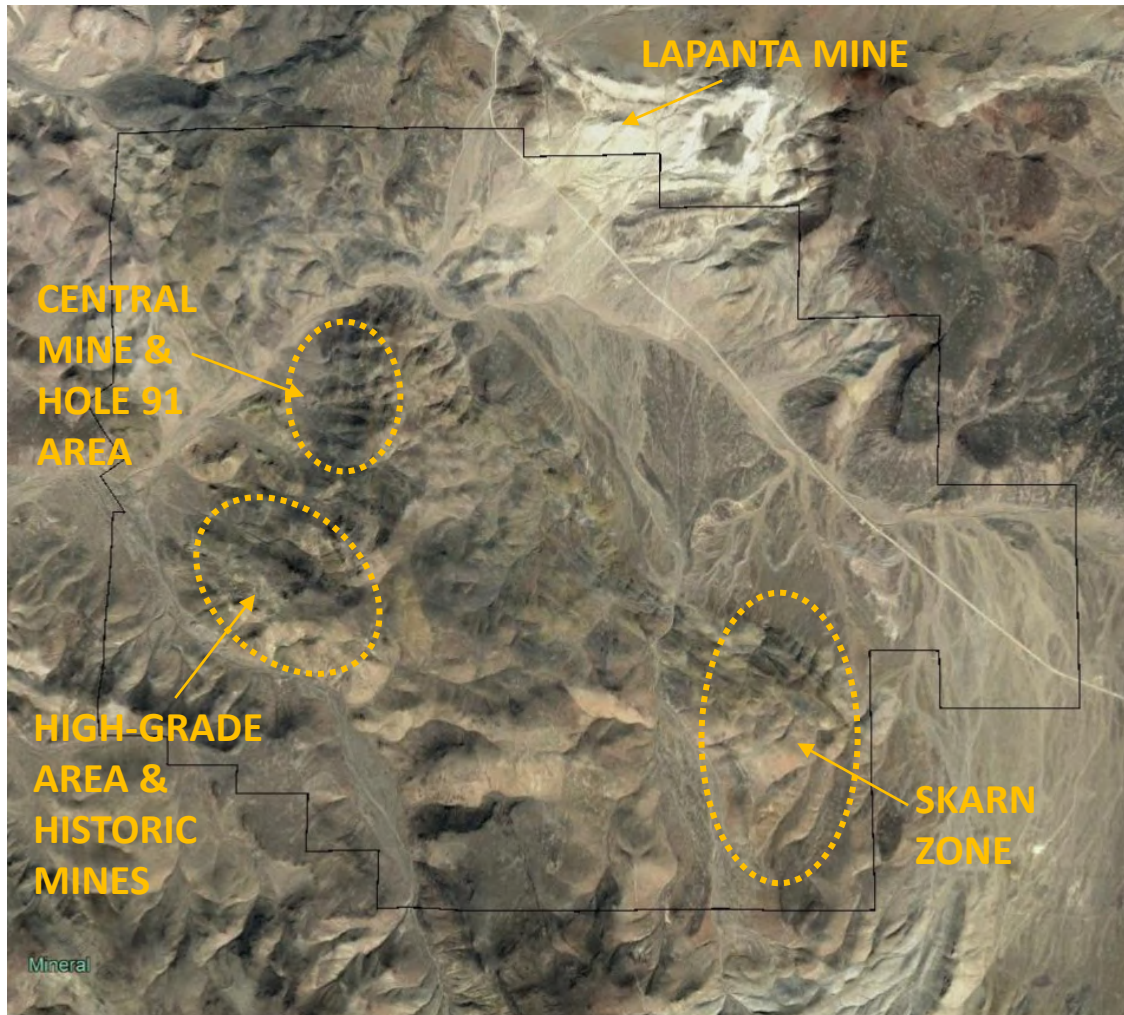
- One of the highest-grade gold districts in Nevada in 1880's
- Unique, almost unexplored opportunity - in private hands since 1896
- Excellent Infrastructure
- Exceptional Metallurgy
- District scale property (>5,000 hectares)
- Newrange has option to earn 100%

Pamlico Project – New Discoveries in an Old District



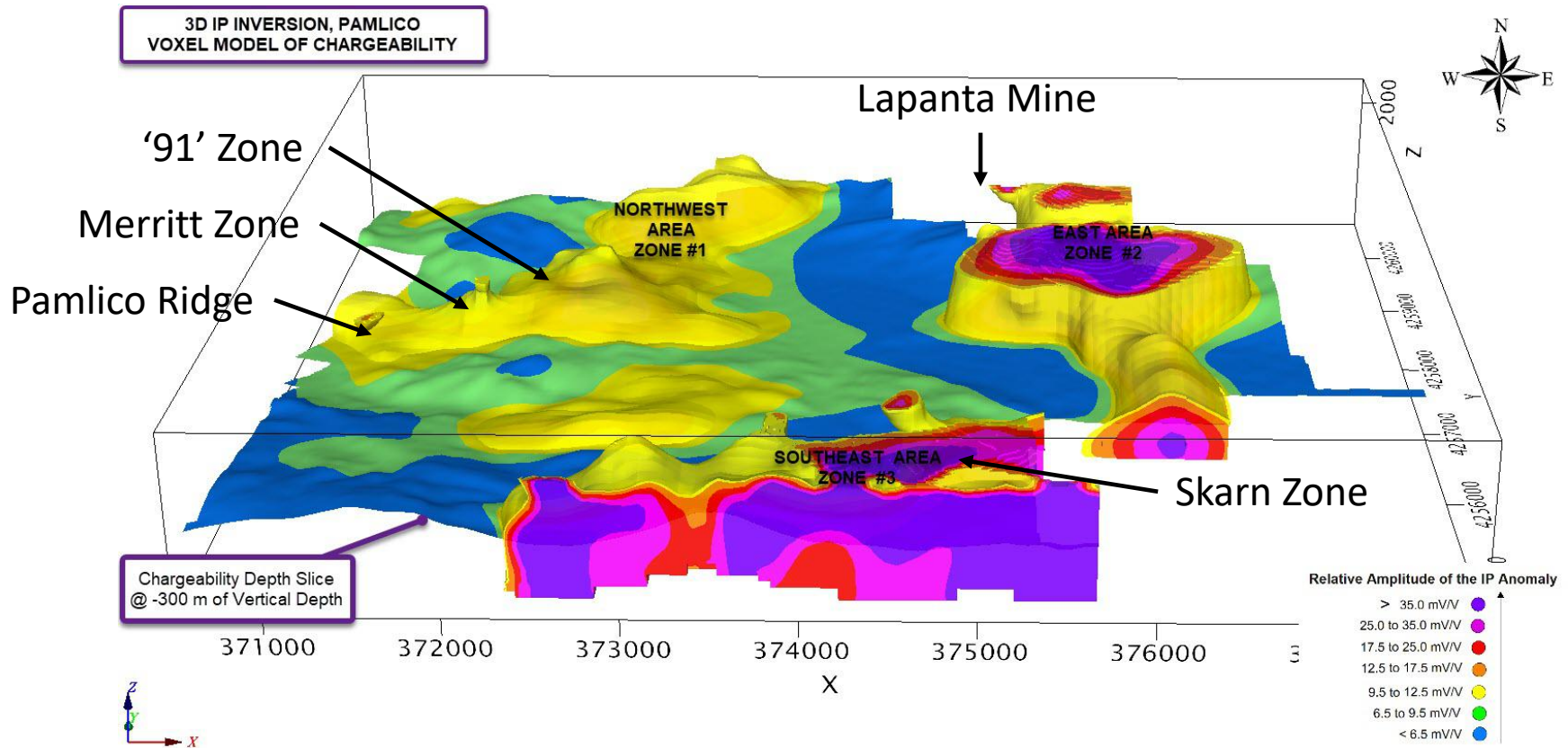
- New geological model suggests multi-million-ounce potential
- High-grade, near surface, oxide gold mineralization
- Lower-grade bulk tonnage mineralization

District Scale Potential – Target Map



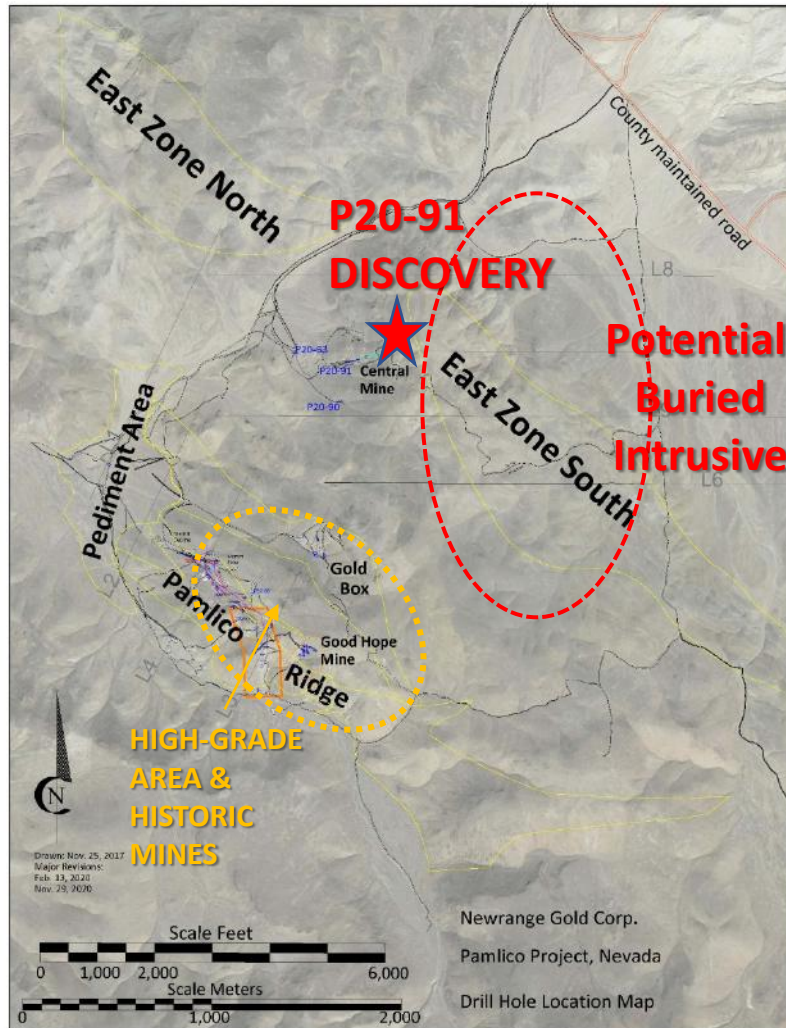
- Area of >300 historic mine workings & high-grade gold mineralization is approximately 850 meters across
- New '91' Zone is demonstrating stacked zones of lower-grade gold mineralization with good continuity
- Skarn Zone is evidence of intrusive-related mineralization; gold in soils; never drilled
- La Panta Mine is past-producing Carbonate Replacement Deposit (CRD) & also evidence of intrusive activity

New IP Results



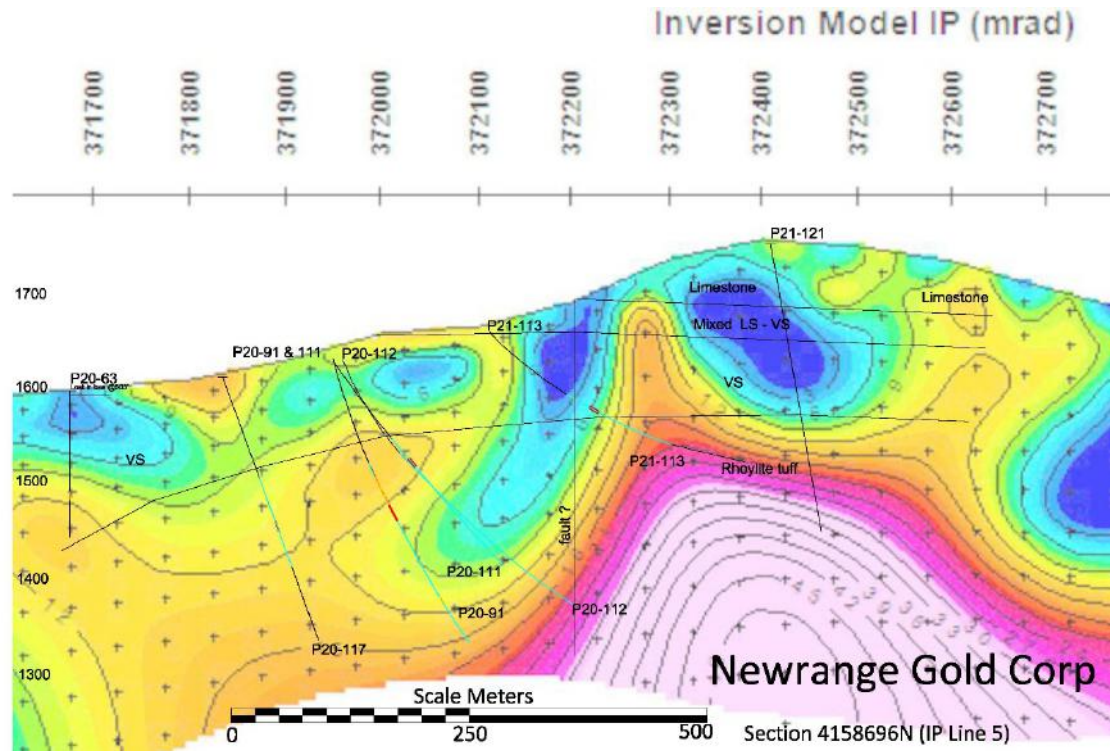
- New, extended IP survey has provided better definition of known zones and identified new areas of interest
- Cluster of anomalies now covers area in excess of 6 x 5 km – property enlarged to >5,000 ha

New Discovery – '91' Zone



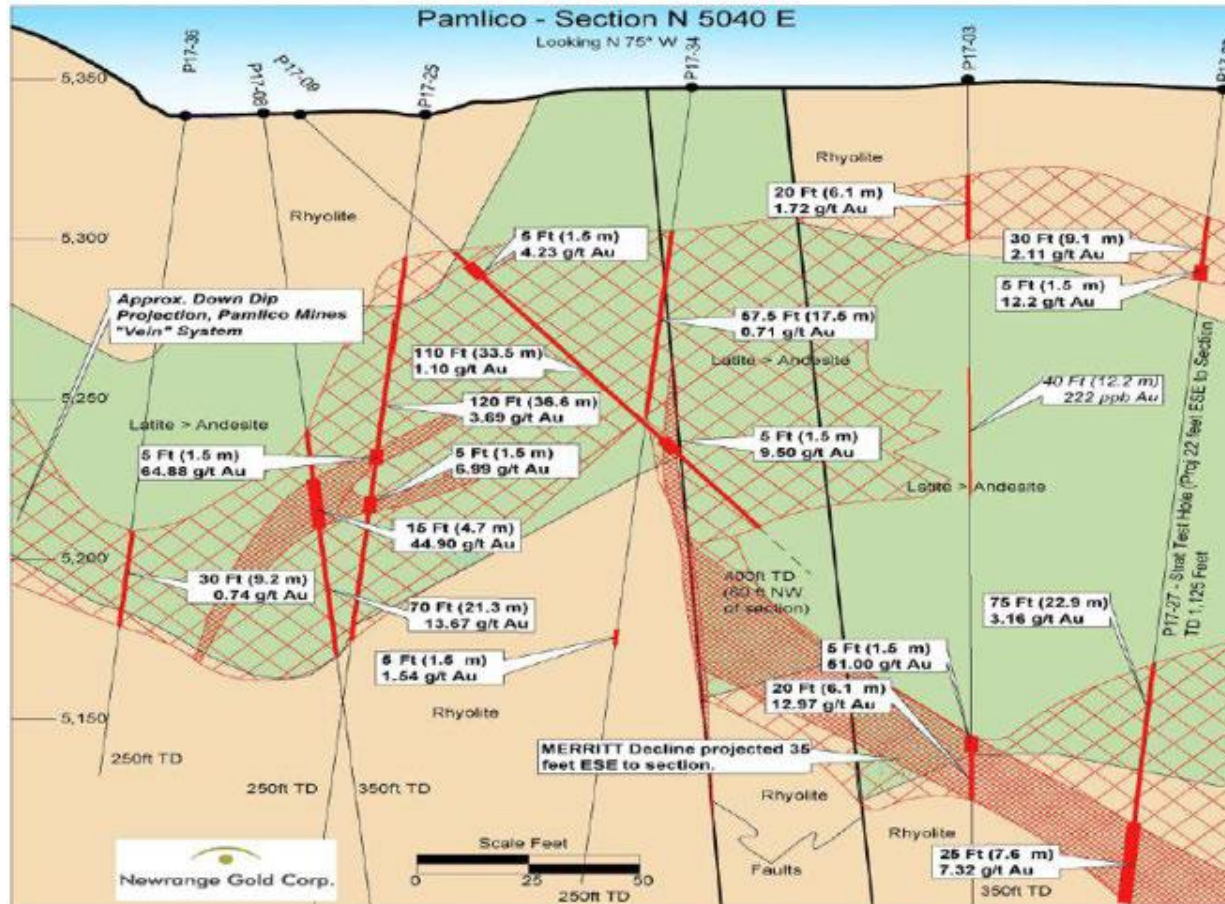
- Hole P20-091 discovery represents a new style of Au mineralization not previously seen on the Project
- Higher grade portion shows strong sericitization and silicification and sits near the base of the zone of oxidation
- Below this the fresh rock contains at least 1% very fine-grained pyrite - good correlation with IP chargeability anomaly
- This style of alteration & mineralization is interpreted to be related to an intrusive body, likely reflected in the large IP anomaly that is >1 km across
- **SIGNIFICANT SIZE POTENTIAL!!**

New Discovery – Hole 91 Area



- Hole P20-091 was drilled to test an 'offshoot' IP anomaly peripheral to the main IP anomaly and intersected a broad zone of gold mineralization from 122.0 to 335.4 m
- Higher grade portion contained 0.744 grams gold per metric tonne (g/t Au) over 18.3 meters, within a larger envelope of 0.403 g/t Au over 51.8 meters
- Follow-up holes intersected similar broad zones of gold mineralization

Merritt Zone Drilling – High-Grade Gold



- Shallow, flat-lying, oxide gold mineralization amenable to open pit mining and heap leaching

Current Drilling

- 74 RC holes (9,044 meters) completed to March 1 in this program; Drilling is ongoing.
- Drilling along Pamlico Ridge, around old mine workings, showed both higher grade structures, **up to 9.5 g/t over 1.5 m, and wider lower grade intervals such as 0.5 g/t over 41.2 m**
- Fill-in drilling at the Merritt Zone returned **14.85 g/t Au over 9.15 meters**
- **New discovery 85m east of Merritt Zone returned multiple high-grade intercepts, including 12.47 g/t Au over 4.5m**
- Several IP targets have shown good correlation between IP anomalies (disseminated pyrite) and gold mineralization
- **New discovery in hole P20-091 implies potential for intrusive-related gold system with significant size potential**
- New, extended IP survey has identified district scale cluster of anomalies
- Diamond drilling to begin late March will be used to test deeper IP targets and to drill for better geological information

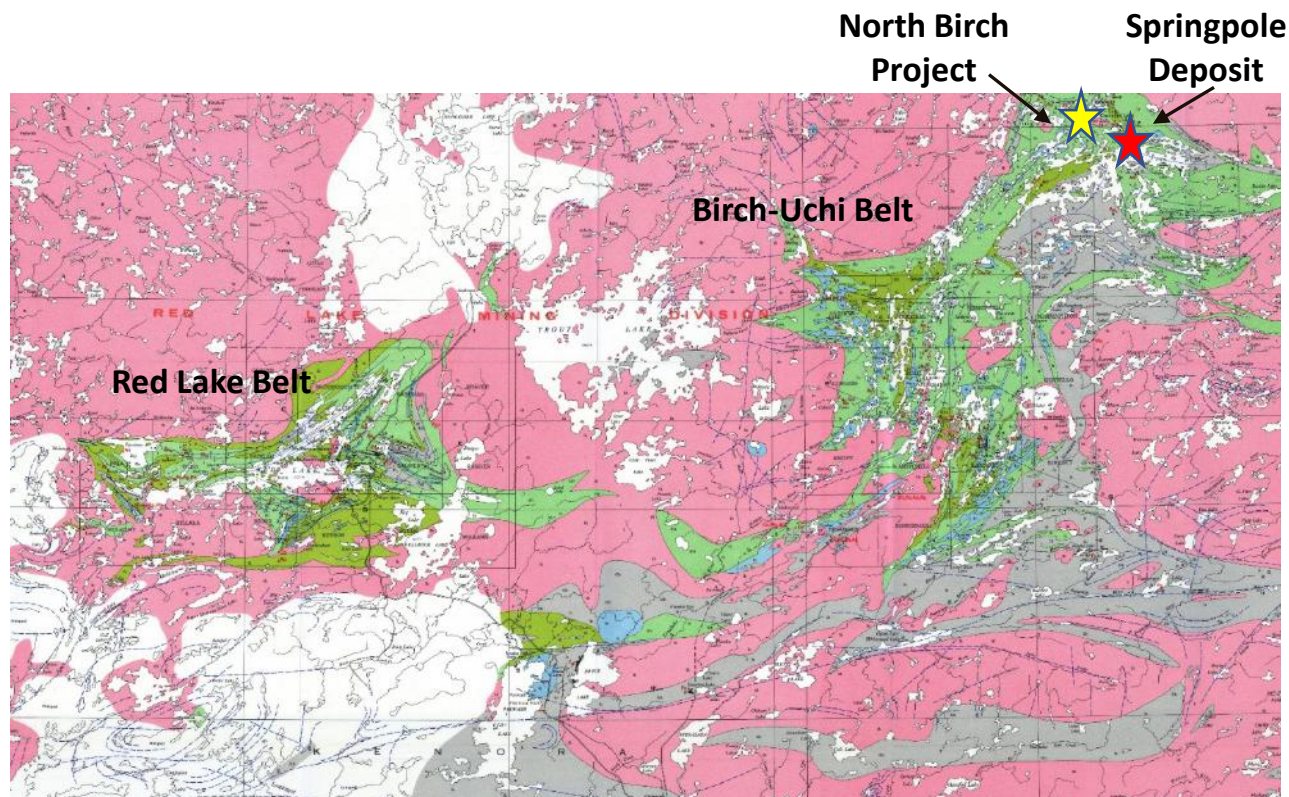
New Exploration Model – Significant Size Potential

Interpretation of evolving geological model and IP surveys has refocused efforts on finding the source of the gold mineralization

- **Strong indications of large-scale intrusive-related mineralizing system with multi-million-ounce potential**
- Drilling to date has shown reasonable continuity of near-surface, flat-lying zones of gold mineralization covering 1,500 meters and amenable to open pit mining & low-cost processing
- Discovery of high-grade mineralization just east of Merritt Zone underscores potential for further ‘blind’ discoveries of these high-grade pockets
- Continued drilling of IP targets will increase understanding of both disseminated and high-grade styles of mineralization
- Skarn Zone to southeast is a significant, untested target being groomed for drilling

Birch-Uchi Greenstone Belt, Red Lake District

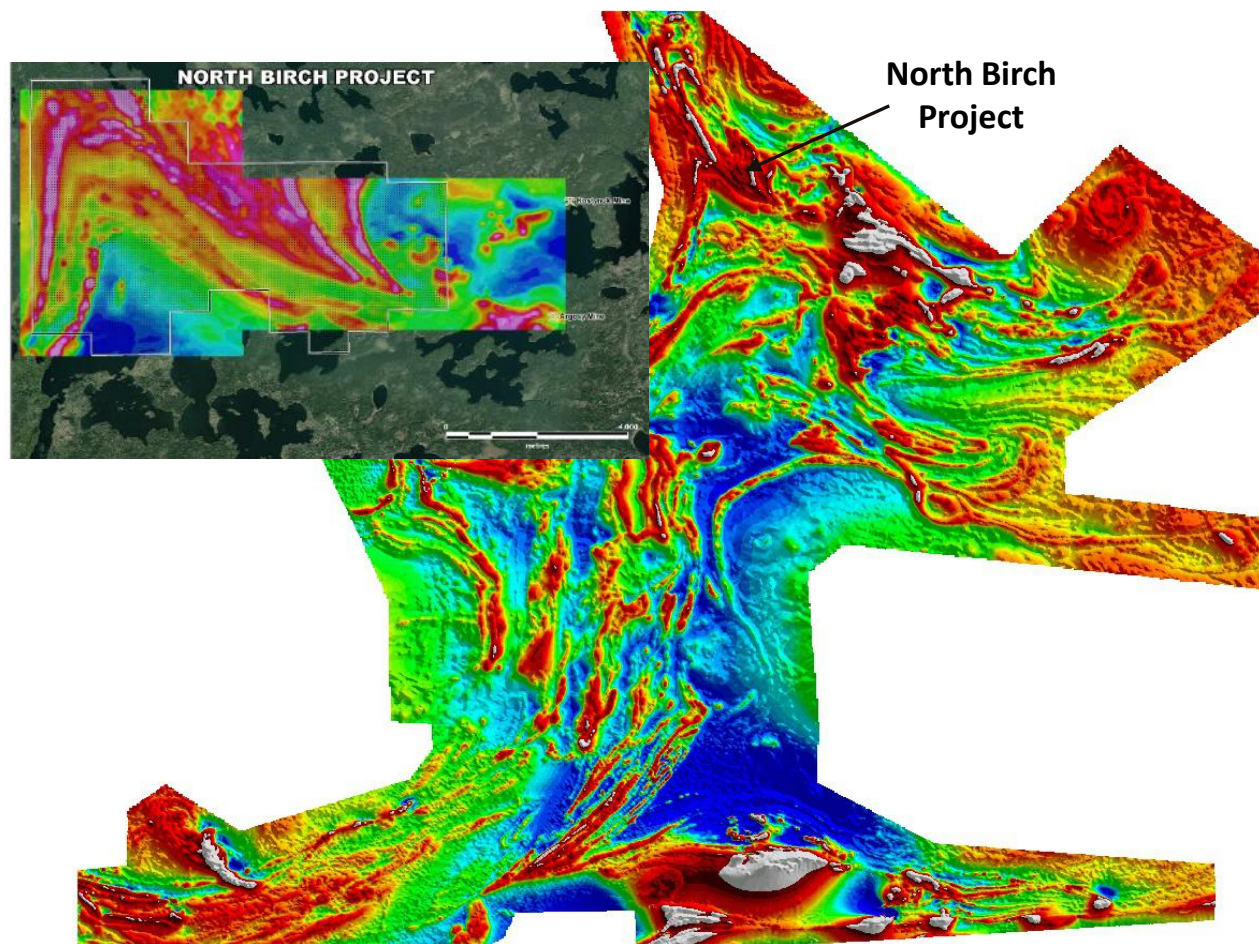
- Next greenstone belt to the east of Red Lake
- Similar geology but three times the size
- Poorly explored due to limited access
- Springpole Gold Deposit (First Mining Gold – 4.7 Moz Au) just 12km to the east of North Birch
- Argosy Gold Mine - 101,875 ounces of gold produced at 12.7g/t. Closed in 1952. 3km from property boundary



North Birch Gold Project

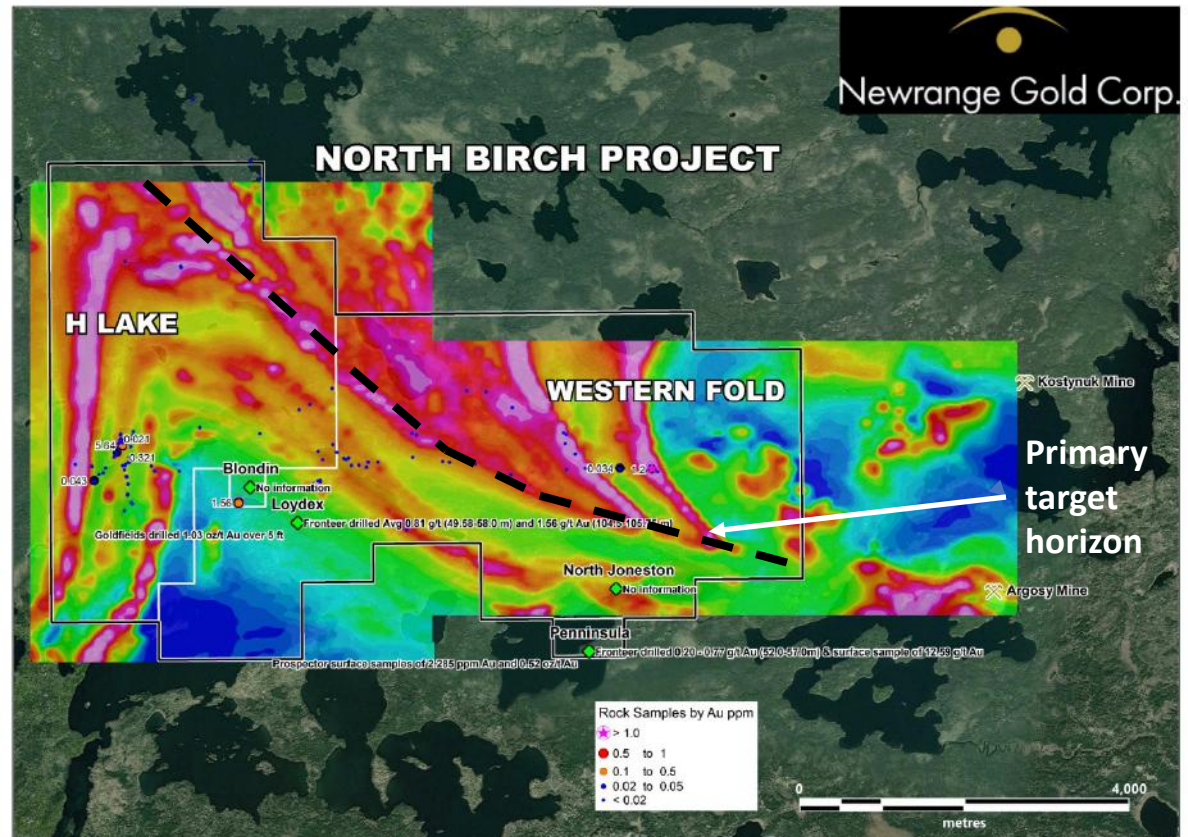
Iron Formation Target

- Folded Iron Formation (IF) is an attractive target for gold mineralization
- IF hosted Au deposits are well known throughout the world
- Largest is Homestake Mine, S. Dakota: 40+ Moz
- Similar geological setting to Musselwhite Mine (Newmont-Goldcorp; 8+ Moz in past production & Reserves), also in NW Ontario



North Birch Gold Project

- 3,850 ha in two contiguous blocks covering the entire Iron Formation package
- H Lake 100% owned; earning 100% on Western Fold
- Several structures cutting the IF
- Only a few kilometres from Argosy Mine & Kostynuk Mine, latter with Au in IF
- Up to 35 g/t Au over 1.6m in historic drilling on North Birch Property but not in IF
- 5.64 g/t Au in grab sample of pyritic IF at H Lake
- Despite multiple gold showings on the property, the IF has never been drilled



Upcoming Catalysts & News Flow

Pamlico

- Continued RC & Diamond Drilling on various target zones
- 3D modeling of mineralized zones
- Continued surface mapping & sampling of various zones

North Birch

- Linecutting and IP survey
- Diamond drilling on best targets

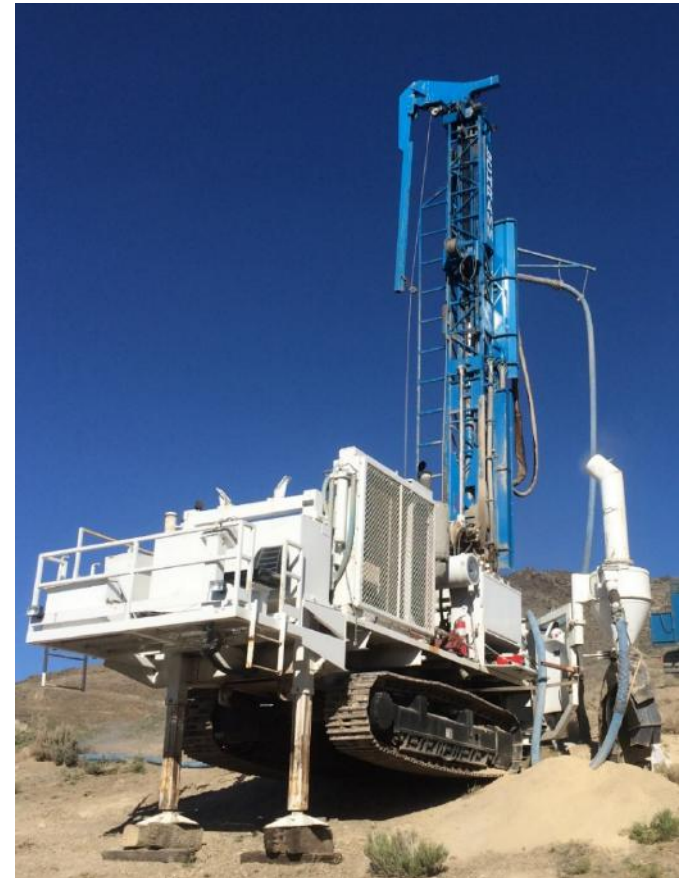
Share Structure

	No. Shares
Shares Issued	127,055,143
Warrants	3,143,000
Options	5,993,403
Shares Fully Diluted	136,191,546

As of March 1, 2021

- Recent share price CA\$0.15
- Market Capitalization ~CA\$19 million
- Ave. daily trading volume (Canada & US): 900,000
- Insiders own 9%
- Institutional ownership ~10%
- Closely held >30%

Analyst coverage: Noble Capital Markets



Contact Us



Newrange Gold Corp.

Phone: +1 (604) 669-0868

Email: info@newrangegold.com

www.newrangegold.com

