



**TOP 10 REASONS TO  
INVEST IN REGULUS**  
投资REGULUS的十大理由

**ANTAKORI  
CU-AU PROJECT /  
ANTAKORI铜金项目**

**GCFF- FEBRUARY 3 2021  
/ 2021年2月3日**

**TSX.V: REG OTCQX: RGLSF BVL: REG**

# DISCLAIMER 免责声明

## Forward-Looking Information 前瞻性信息

Forward-Looking Information. Certain statements regarding Regulus, including management's assessment of future plans and operations, may constitute forward-looking statements under applicable securities laws and necessarily involve known and unknown risks and uncertainties, most of which are beyond Regulus' control. Often, but not always, forward-looking statements or information can be identified by the use of words such as "plans", "expects" or "does not expect", "is expected", "budget", "scheduled", "estimates", "forecasts", "intends", "anticipates" or "does not anticipate" or "believes" or variations of such words and phrases or statements that certain actions, events or results "may", "could", "would", "might" or "will" be taken, occur or be achieved.

Specifically, and without limitation, all statements included in this presentation that address activities, events or developments that Regulus expects or anticipates will or may occur in the future, including the proposed exploration and development of the AntaKori project described herein, the completion of the anticipated drilling program, the completion of an updated NI 43-101 resource estimate, the impact of the COVID-19 pandemic on the Canadian and worldwide economy, the Company's workforce, worldwide demand for commodities and the Company's business generally and management's assessment of future plans and operations and statements with respect to the completion of the anticipated exploration and development programs, may constitute forward-looking statements under applicable securities laws and necessarily involve known and unknown risks and uncertainties, most of which are beyond Regulus' control. These risks may cause actual financial and operating results, performance, levels of activity and achievements to differ materially from those expressed in, or implied by, such forward-looking statements. Although Regulus believes that the expectations represented in such forward-looking statements are reasonable, there can be no assurance that such expectations will prove to be correct. The forward-looking statements contained in this presentation are made as of the date hereof and Regulus does not undertake any obligation to publicly update or revise any forward-looking statements or information, whether as a result of new information, future events or otherwise, unless so required by applicable securities law.

Presentation of Resource Estimates. This presentation uses the terms "indicated" and "inferred" in connection with its resource presentations, as defined in accordance with National Instrument 43-101 Standards of Disclosure for Mineral Projects ("NI 43-101") under guidelines set out in the Canadian Institute of Mining, Metallurgy and Petroleum (the "CIM") Standards on Mineral Resources and Mineral Reserves adopted by the CIM Council on May 10, 2014. An Inferred Mineral Resource is that part of a Mineral Resource for which quantity and grade or quality are estimated on the basis of limited geological evidence and sampling. Geological evidence is sufficient to imply but not verify geological and grade or quality continuity. An Inferred Mineral Resource has a lower level of confidence than that applying to an Indicated Mineral Resource and must not be converted to a Mineral Reserve. It is reasonably expected that the majority of Inferred Mineral Resources could be upgraded to Indicated Mineral Resources with continued exploration. An Indicated Mineral Resource is that part of a Mineral Resource for which quantity, grade or quality, densities, shape and physical characteristics are estimated with sufficient confidence to allow the application of Modifying Factors in sufficient detail to support mine planning and evaluation of the economic viability of the deposit. Geological evidence is derived from adequately detailed and reliable exploration, sampling and testing and is sufficient to assume geological and grade or quality continuity between points of observation. An Indicated Mineral Resource has a lower level of confidence than that applying to a Measured Mineral Resource and may only be converted to a Probable Mineral Reserve. All of Regulus' exploration programs and the related disclosure of information of technical or scientific nature are prepared by, or prepared under the direct supervision of Dr. Kevin B. Heather, FAusIMM, Regulus' Chief Geological Officer, who is a "qualified person" as defined in NI 43-101.

# 1 TEAM HAS HISTORY OF CREATING VALUE 团队有成功创造价值的履历

Management's previous company:  
管理层之前的公司:



- Converted Haqira from small copper oxide deposit to a Tier 1 porphyry copper deposit 将Haqira从小的氧化铜矿床开发成为一级斑岩铜矿床。
- Upon completion of PEA, sold to First Quantum Minerals for ~ **C\$650 MM** 完成初步经济评估后，以**6.5亿加元**出售给First Quantum Minerals。
- People who invested in the downturn of 2008-09 saw a ~**20x** return by 2010 在2008-09年行业低迷时投资的人到2010年获利超过**20倍**。

Management's current company:  
管理层当前的公司:



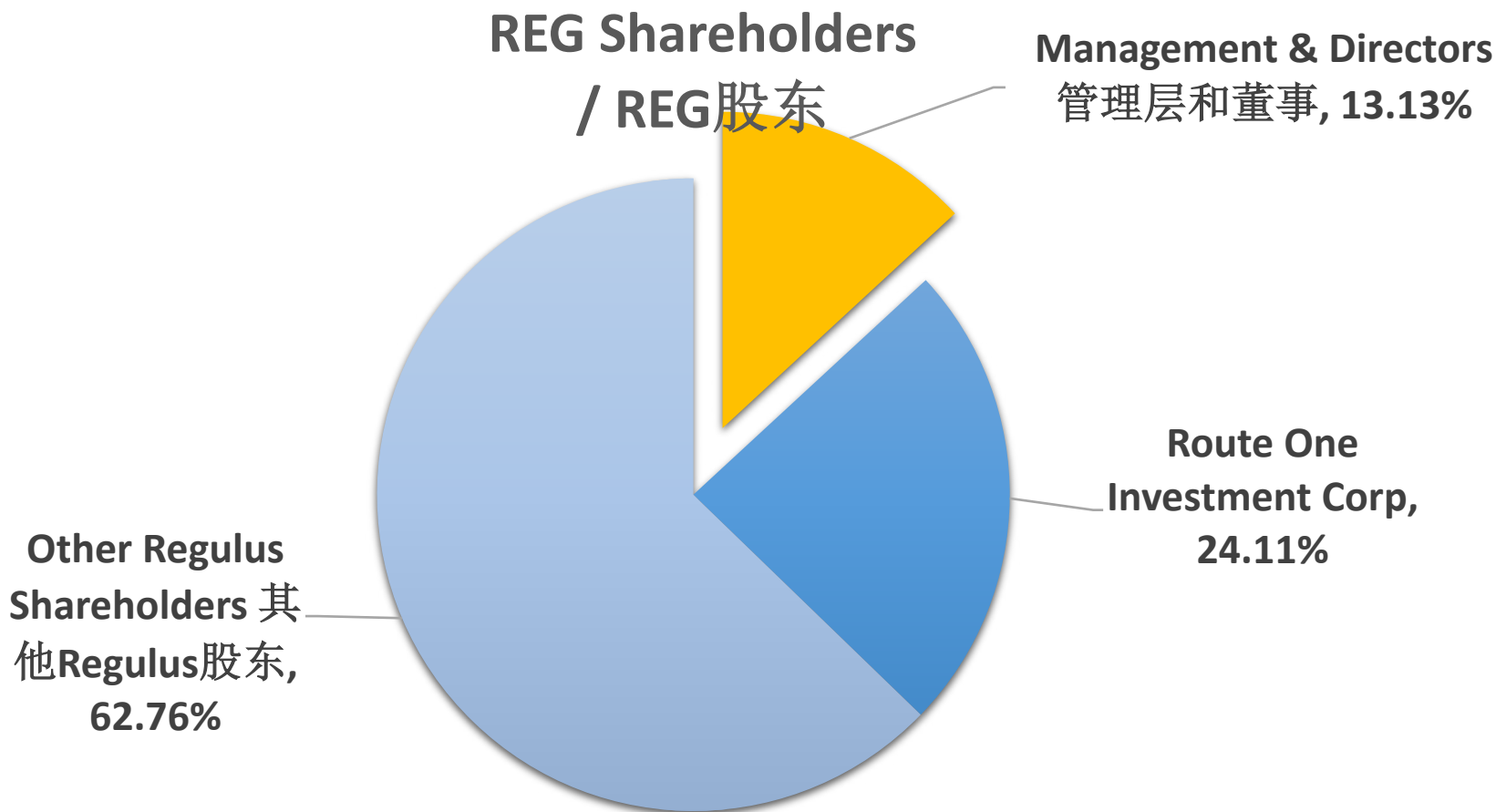
- Converting AntaKori from a moderate sulphide deposit to a Tier 1 sulphide/porphyry-skarn deposit 将AntaKori从一个中等的硫化物矿床开发成为一级硫化物/斑岩-矽卡岩矿床。
- Better location, better grade, better strip, bigger potential than Haqira 更有利的位置、更高的品位、更好的剥采比、比Haqira更高的潜力。
- Strategic partnership with Osisko Gold Royalties de-risks the project and fully finances completion of Phase II drilling 与 Osisko Gold Royalties达成战略合作关系，降低了项目风险，筹措资金足以完成二期钻探。

**Team is using a proven strategy to develop an asset that will likely be acquired by a major miner.  
团队正在采用经过验证的策略，开发可能被大型矿业公司收购的资产。**

# 2

## MANAGEMENT HAS SKIN IN THE GAME

### 管理层与公司股东风险共担



Shares issued / 已发行股票	<b>101,844,844</b>
Fully diluted / 完全摊薄后股数	<b>127,042,420</b>
Cash 现金 (Dec 1, 2020) (2020年12月1日)	<b>C\$18 MM / 1800万加元</b> <small>(includes Osisko Gold Royalties investment) (包括Osisko Gold Royalties investment)</small>
Share price 股价 (Jan 25, 2021) (2021年1月25日)	<b>C\$0.91</b>
Market cap 市值	<b>C\$ 92.7MM / 9270万加元</b>

#### Analyst Coverage 分析师跟踪

Canaccord	Michael Pettingell
Paradigm	David Davidson
IAS	George Topping

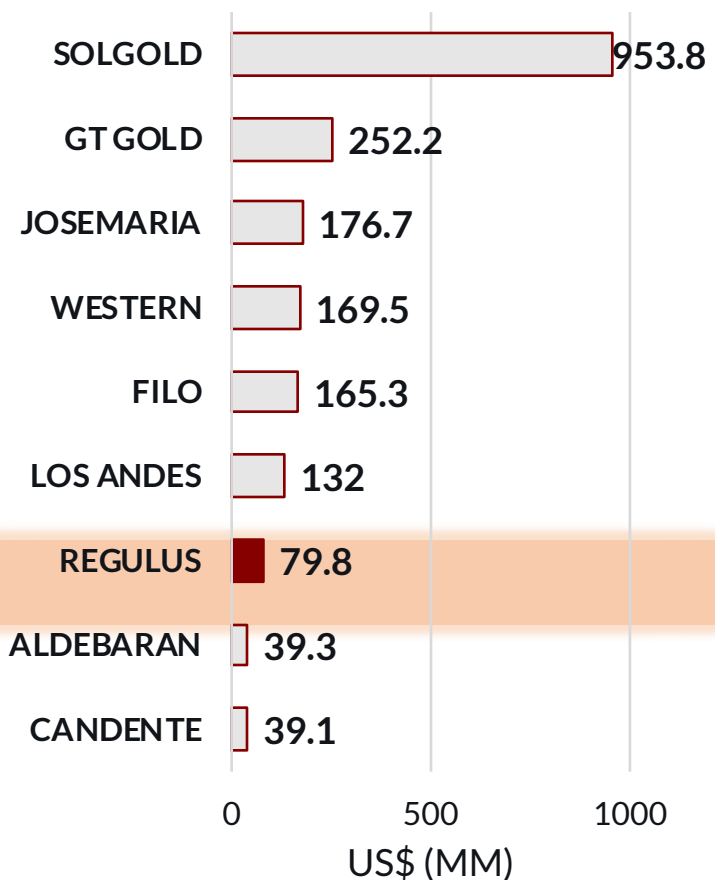
Management and Directors have invested > C\$3 MM in Regulus shares since September 2018. Management interests fully aligned with shareholders. 自2018年9月，管理层和董事已经向Regulus股票投资了300多万加元。管理层的利益完全与股东一致。

# 3

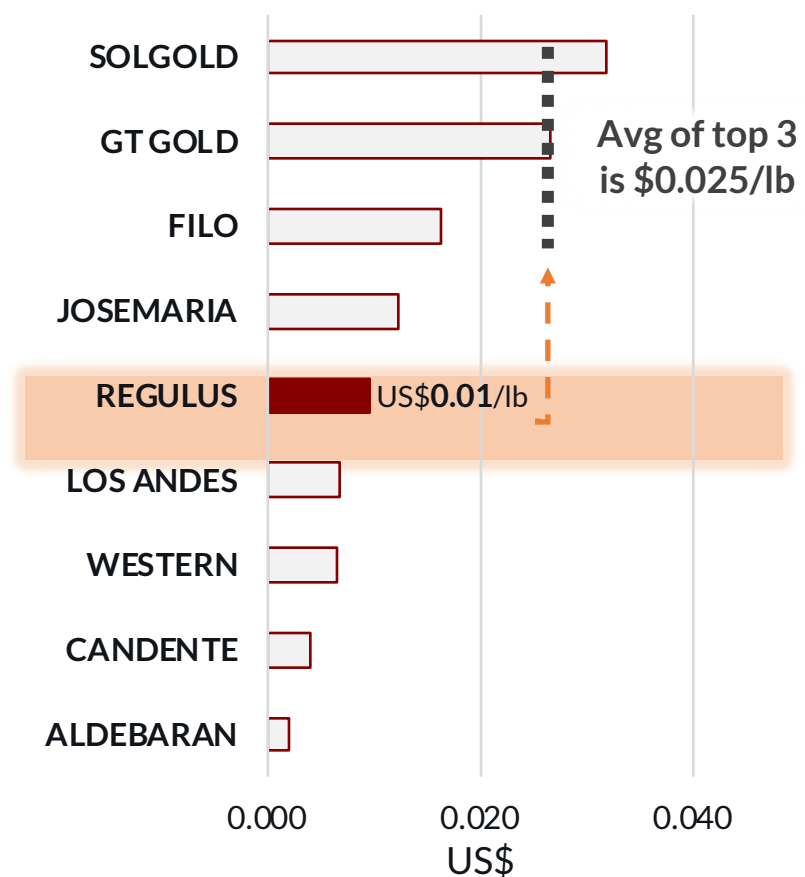
## SIGNIFICANT RE-RATING OPPORTUNITY

### 巨大的再评估机会

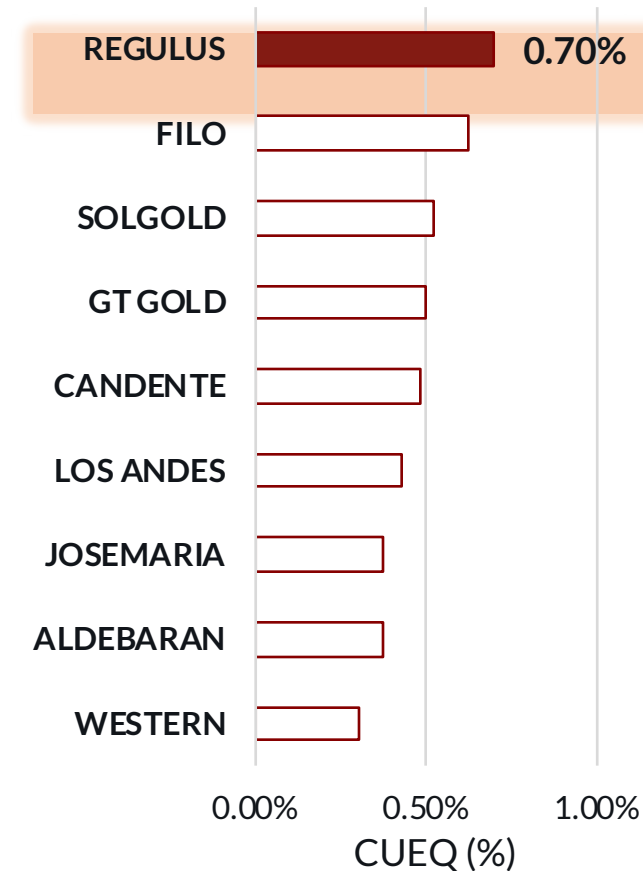
#### Market Cap 市值



#### EV/lb CuEq 企业价值/磅铜当量



#### CuEq Grade 铜当量品位

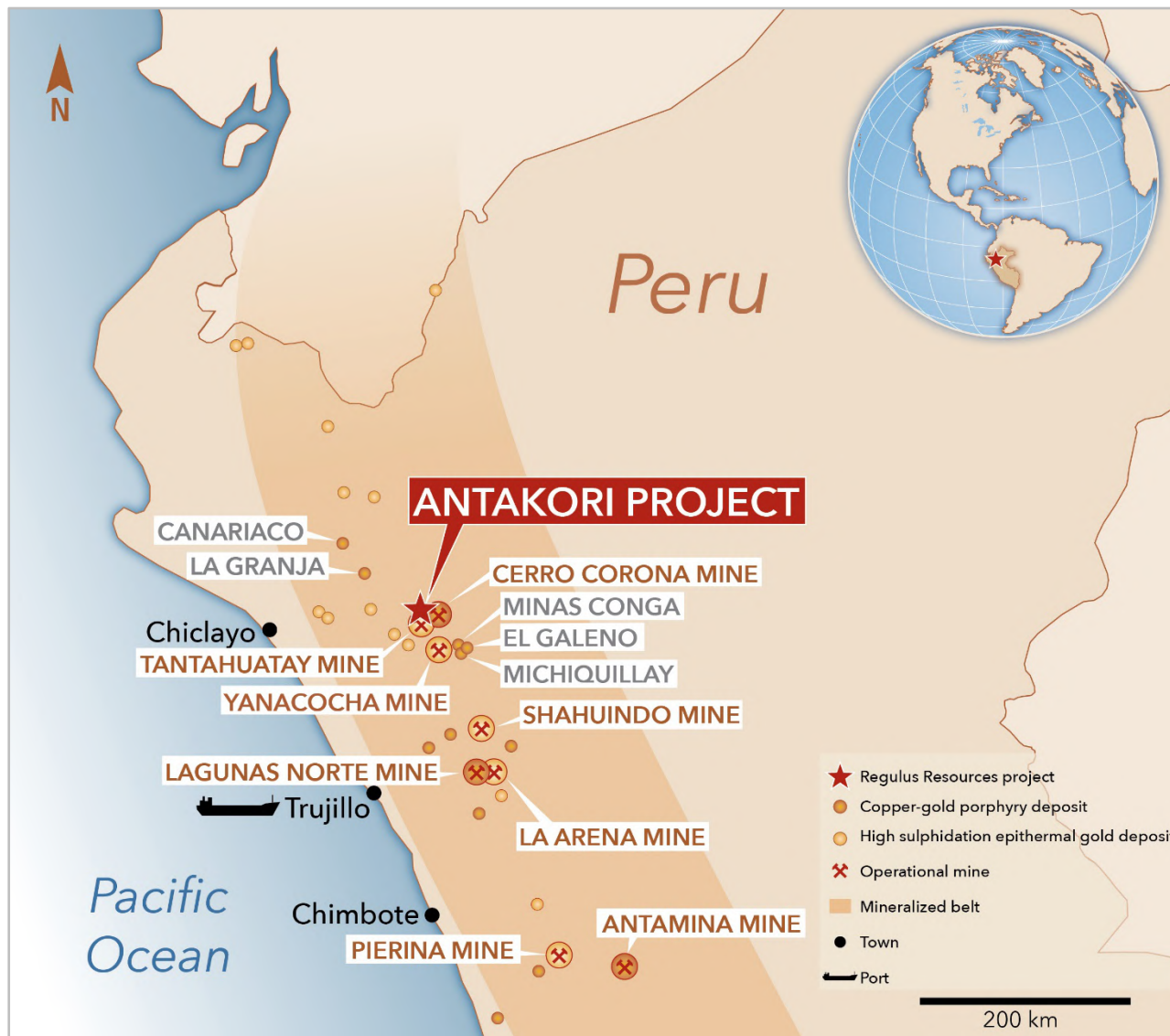


**Regulus offers a significant value investment opportunity compared to peers. / 与同行业公司相比，Regulus提供了一个巨大的投资机会。**

**TSX.V: REG OTCQX: RGLSF**

All data as per SNL Financial per 20 Jan, 2021. 所有数据按照截止2021年1月20日的SNL Financial的数据

CuEqs were calculated using the following metal prices US\$3 Cu/lb, US\$1,450 Au/Oz, US\$18 Ag/Oz, US\$10 Mo/lb and US\$1.13 Zn/lb. 铜当量计算采用下列金属价格：铜3美元/磅、黄金1450美元/盎司，白银18美元/盎司，钼10美元/磅，锌1.13美元/磅。



## TOP GLOBAL COPPER-GOLD PRODUCER 全球顶尖的铜-金生产国

Peru is the second largest copper producing country in the world and largest gold producer in South America 秘鲁是全球第二大铜生产国，南美洲最大的黄金生产国。

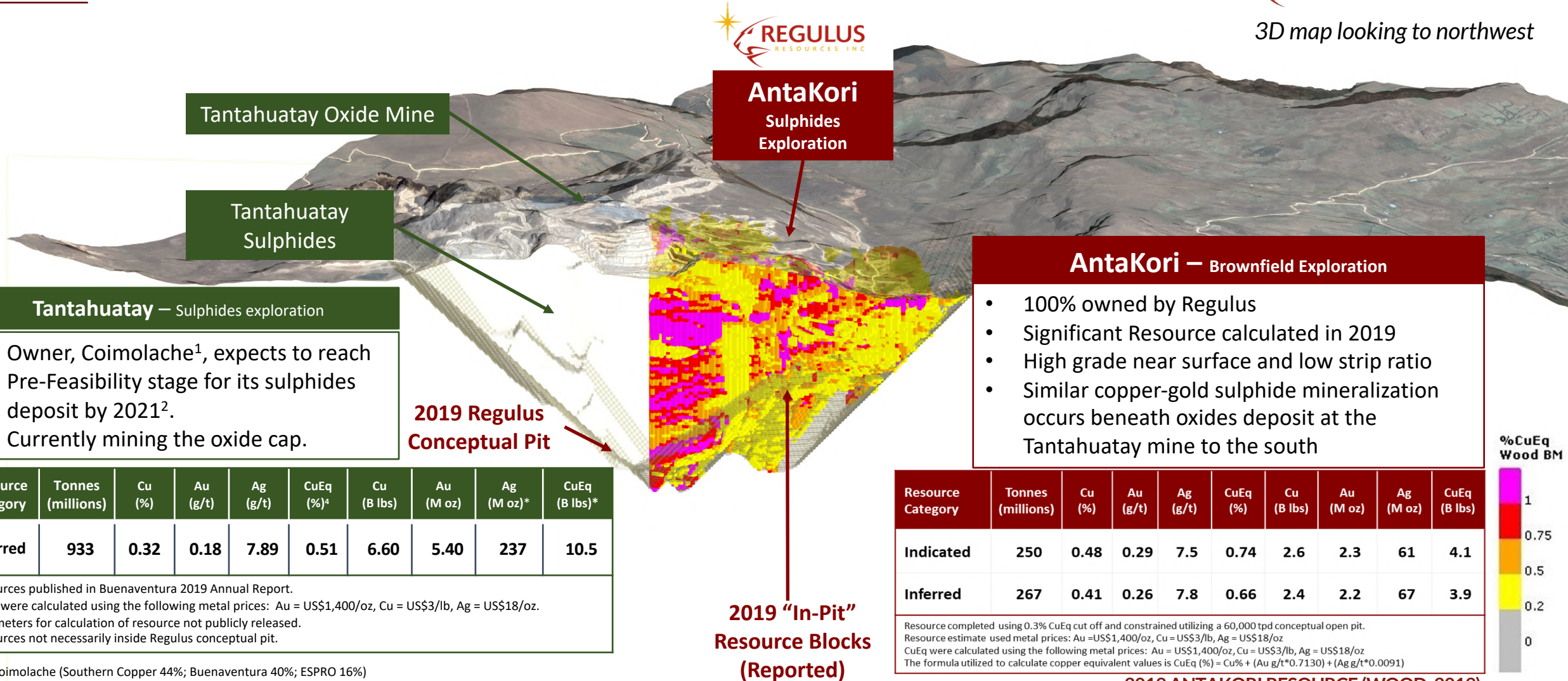
## GEOLOGICALLY WELL-ENDOWED

The region is geologically well endowed with large copper and gold projects and operations including Yanacocha, Michiquillay, La Granja, Antamina, Cerro Corona, and Tantahuatay 该地区地质条件良好，拥有大型铜金项目，包括Yanacocha、Michiquillay、La Granja、Antamina、Cerro Corona和Tantahuatay。

## EXCELLENT INFRASTRUCTURE 基础设施良好

There is existing infrastructure in the region from existing mining operations including ports, power and water. 现有的采矿运营活动已经建设好了基础设施，包括港口、电力和水。

3D map looking to northwest



### Tantahuatay – Sulphides exploration

- Owner, Coimolache<sup>1</sup>, expects to reach Pre-Feasibility stage for its sulphides deposit by 2021<sup>2</sup>.
- Currently mining the oxide cap.

Resource Category	Tonnes (millions)	Cu (%)	Au (g/t)	Ag (g/t)	CuEq (%) <sup>4</sup>	Cu (B lbs)	Au (M oz)	Ag (M oz)*	CuEq (B lbs)*
Inferred	933	0.32	0.18	7.89	0.51	6.60	5.40	237	10.5

Resources published in Buenaventura 2019 Annual Report.  
 CuEq were calculated using the following metal prices: Au = US\$1,400/oz, Cu = US\$3/lb, Ag = US\$18/oz.  
 Parameters for calculation of resource not publicly released.  
 Resources not necessarily inside Regulus conceptual pit.

(1) Coimolache (Southern Copper 44%; Buenaventura 40%; ESPRO 16%)  
 (2) Buenaventura disclosure

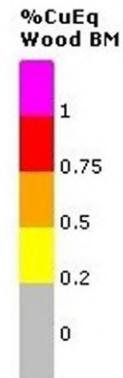
### AntaKori Sulphides Exploration

### AntaKori – Brownfield Exploration

- 100% owned by Regulus
- Significant Resource calculated in 2019
- High grade near surface and low strip ratio
- Similar copper-gold sulphide mineralization occurs beneath oxides deposit at the Tantahuatay mine to the south

Resource Category	Tonnes (millions)	Cu (%)	Au (g/t)	Ag (g/t)	CuEq (%)	Cu (B lbs)	Au (M oz)	Ag (M oz)	CuEq (B lbs)
Indicated	250	0.48	0.29	7.5	0.74	2.6	2.3	61	4.1
Inferred	267	0.41	0.26	7.8	0.66	2.4	2.2	67	3.9

Resource completed using 0.3% CuEq cut off and constrained utilizing a 60,000 tpd conceptual open pit.  
 Resource estimate used metal prices: Au = US\$1,400/oz, Cu = US\$3/lb, Ag = US\$18/oz.  
 CuEq were calculated using the following metal prices: Au = US\$1,400/oz, Cu = US\$3/lb, Ag = US\$18/oz.  
 The formula utilized to calculate copper equivalent values is CuEq (%) = Cu% + (Au g/t\*0.7130) + (Ag g/t\*0.0091)



### 2019 "In-Pit" Resource Blocks (Reported)

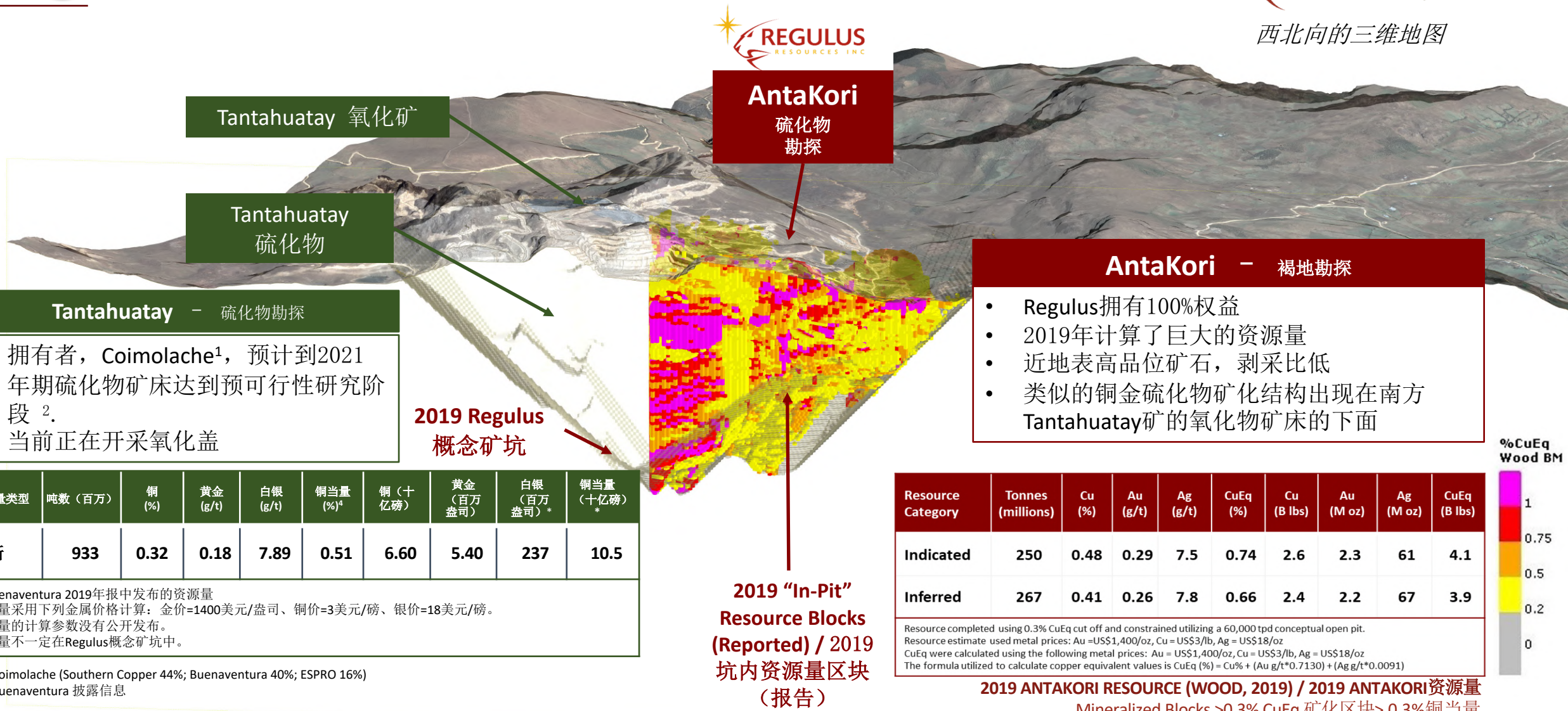
2019 ANTAKORI RESOURCE (WOOD, 2019)  
 Mineralized Blocks >0.3% CuEq

**AntaKori is a growing portion of a large copper-gold sulphides deposit in the district.**

# 5

## 完成货币化的清晰时间表

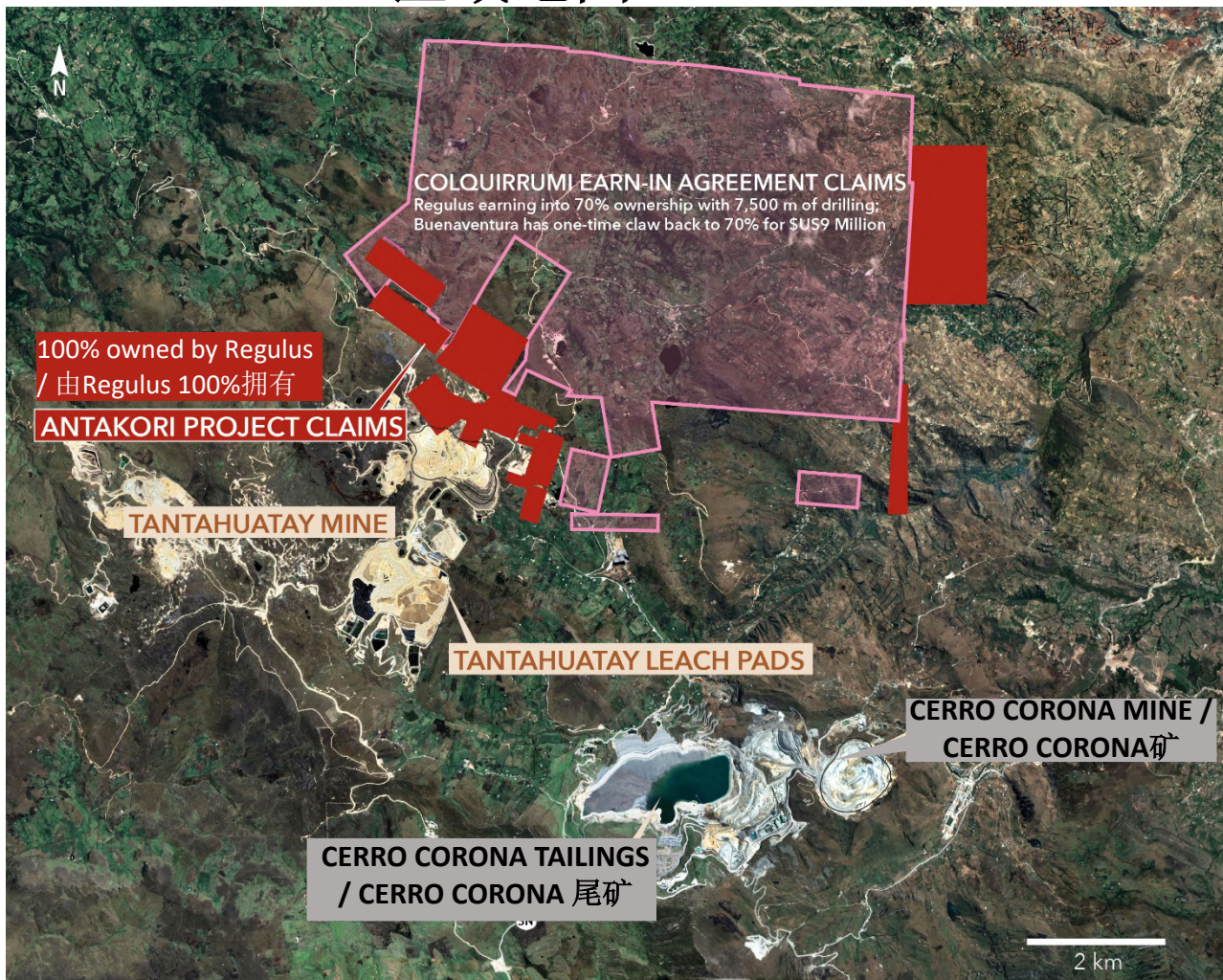
西北向的三维地图



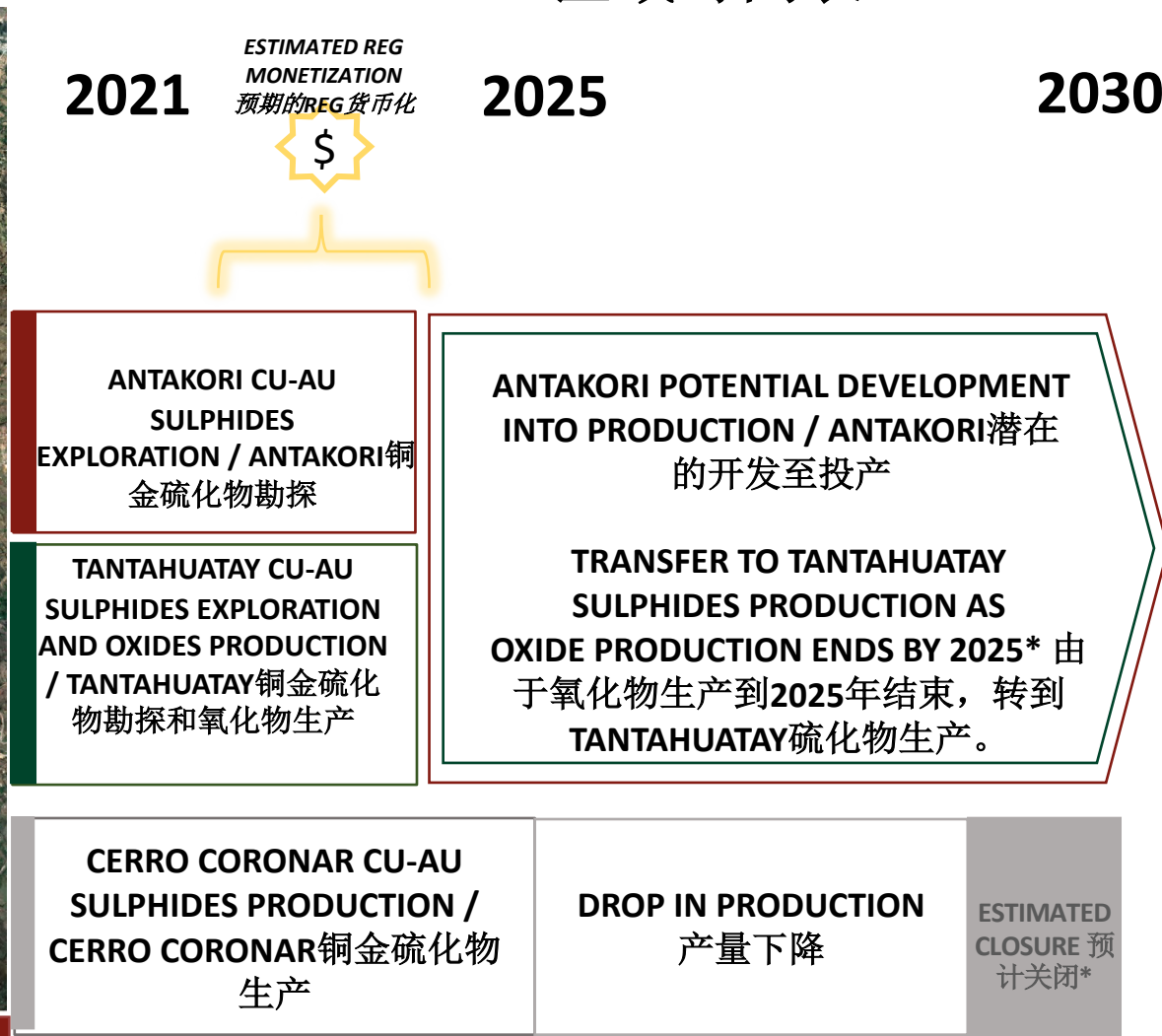
**AntaKori是区域内大型铜金硫化物矿床中不断扩大的部分**



### DISTRICT MAP 区域地图



### DISTRICT TIMELINE 区域时间表



Neighbouring mines will need more ore to avoid closure by 2025.  
到2025年，相邻的矿山将需要更多的矿石以避免关闭。

\*Per SNL Financial 按照SNL Financial

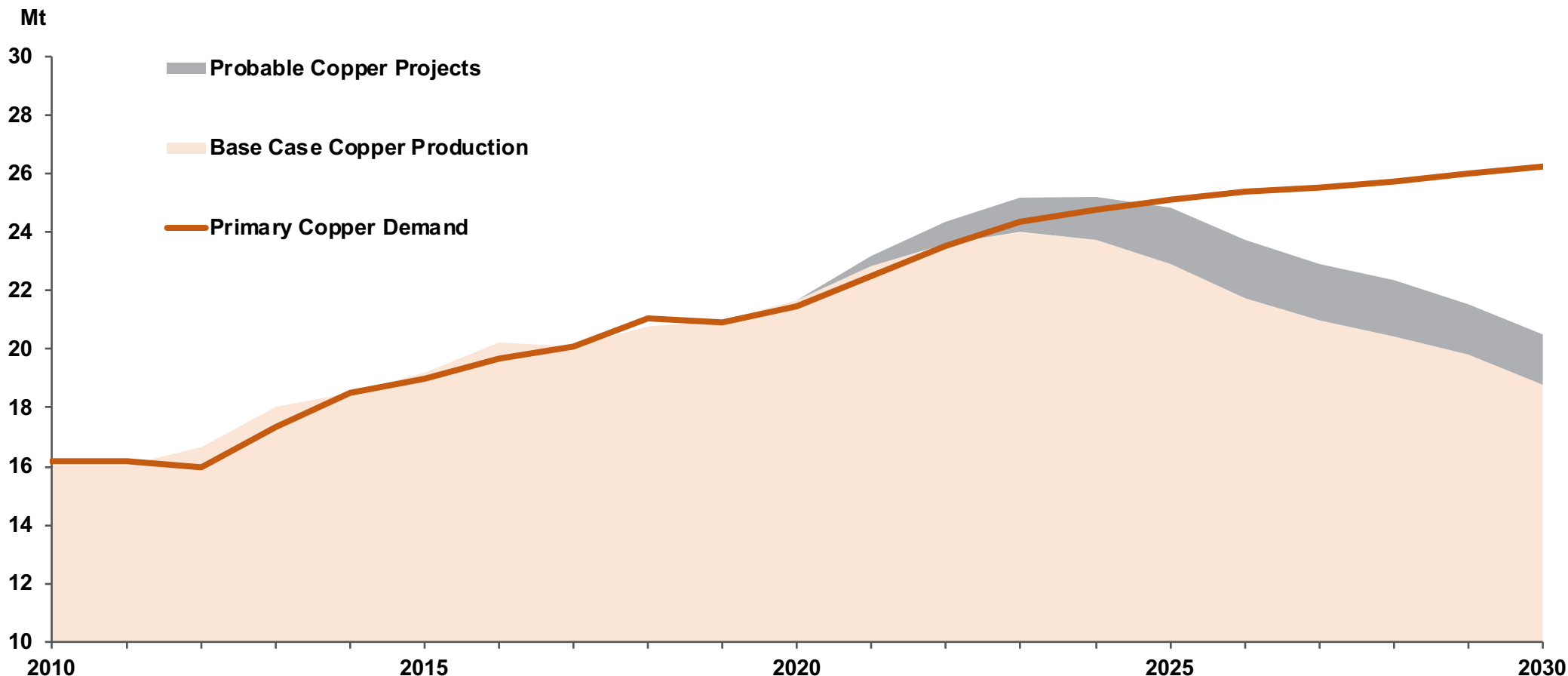
# 5

## CLEAR TIMELINE TO MONETIZATION 完成货币化的清晰时间表



By 2025 New Copper Mines are Required to Meet Demand Requirements

到2025年，需要新的铜矿来满足需求。



Source: Wood Mackenzie - Global Copper Long Term Outlook Q1-2020 - Published March, 2020  
来源：麦肯锡 - 全球铜长期前景，2020年第一季度 - 2020年3月出版。

**AntaKori district timeline ties well with timeline for projected shortfall in copper supply. /  
AntaKori地区的时间表与预期的铜供应短缺时间表非常吻合**

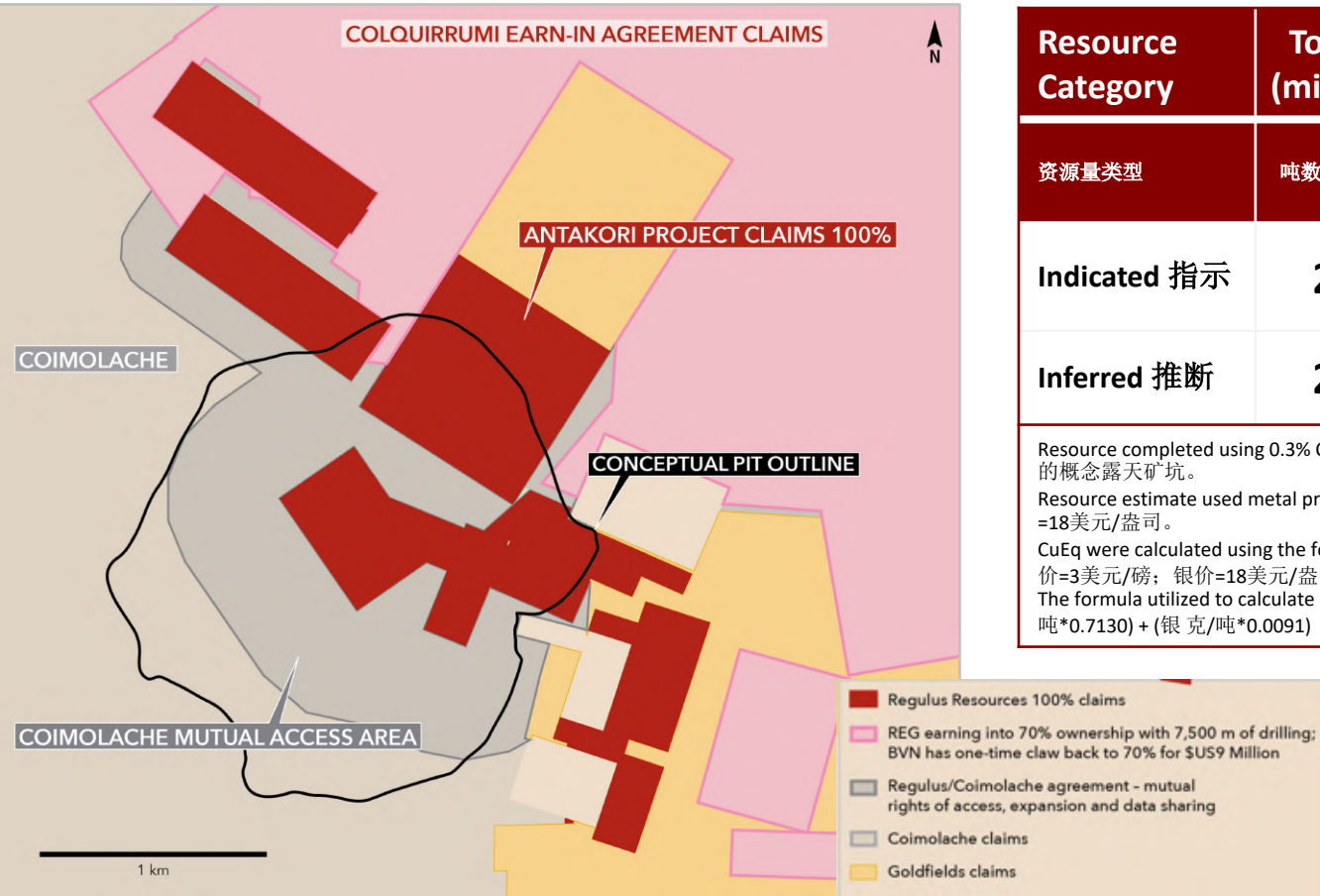
# 6 SIGNIFICANT RESOURCE IN HAND & ROOM TO GROW

## 已发现巨大的资源量，还有提升空间

Conceptual Pit Models Both Regulus and Coimolache Mineralization  
 – We Only Report for Regulus 概念矿坑模拟Regulus和Coimolache  
 矿化结构 – 我们只报告Regulus的这一部分

### Interim Resource with Significant Growth Potential

### 临时资源量，还有巨大增长潜力



Resource Category	Tonnes (millions)	Cu (%)	Au (g/t)	Ag (g/t)	CuEq (%)	Cu (B lbs)	Au (M oz)	Ag (M oz)	CuEq (B lbs)
资源量类型	吨数 (百万)	铜 (%)	黄金 (g/t)	白银 (g/t)	铜当量 (%) <sup>4</sup>	铜 (十亿磅)	黄金 (百万盎司)	白银 (百万盎司)*	铜当量 (十亿磅)*
Indicated 指示	250	0.48	0.29	7.5	0.74	2.6	2.3	61	4.1
Inferred 推断	267	0.41	0.26	7.8	0.66	2.4	2.2	67	3.9

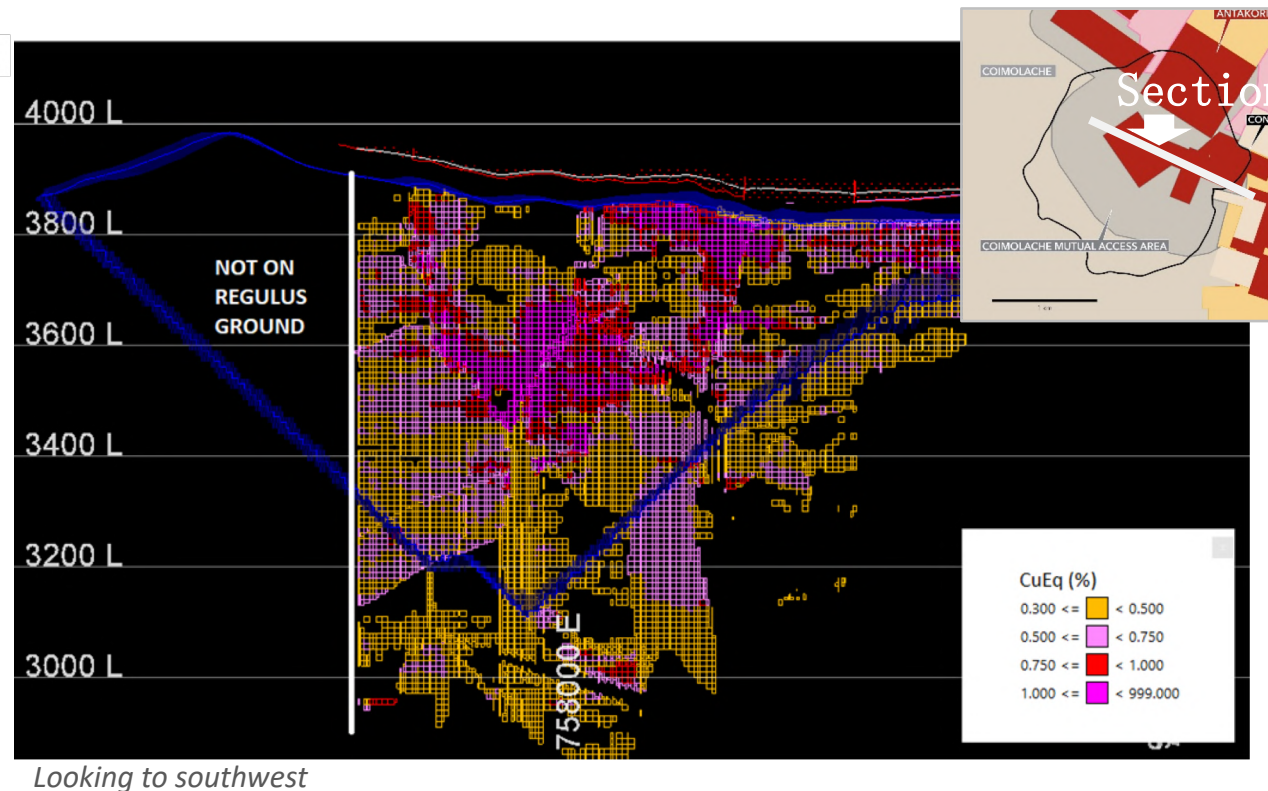
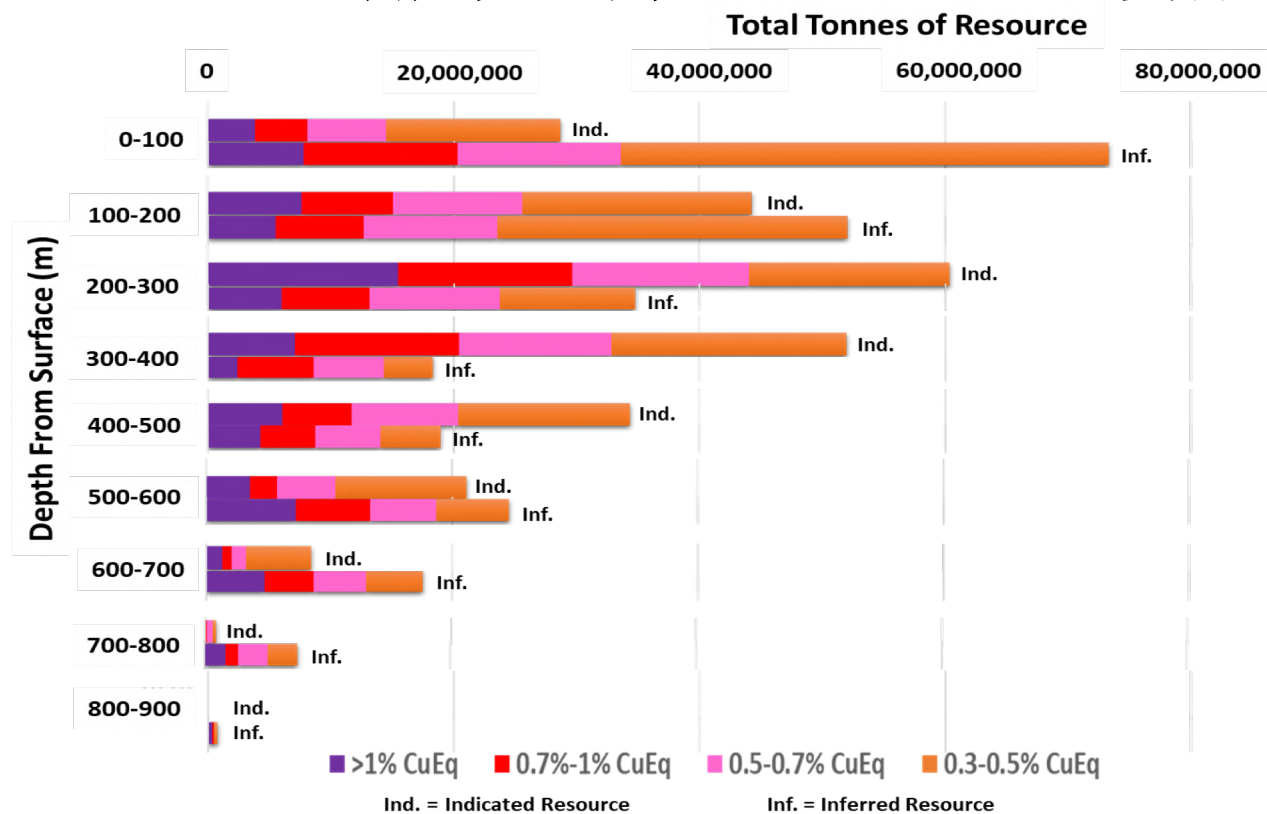
Resource completed using 0.3% CuEq cut off and constrained utilizing a 60,000 tpd conceptual open pit. 采用铜当量边界品位0.3%完成的资源量，使用每天6万吨的概念露天矿坑。  
 Resource estimate used metal prices: Au =US\$1,400/oz, Cu = US\$3/lb, Ag = US\$18/oz 资源量预估使用的金属价格：金价=1400美元/盎司，铜价=3美元/磅；银价=18美元/盎司。  
 CuEq were calculated using the following metal prices: Au = US\$1,400/oz, Cu = US\$3/lb, Ag = US\$18/oz 采用以下金属价格计算铜当量：金价=1400美元/盎司，铜价=3美元/磅；银价=18美元/盎司。  
 The formula utilized to calculate copper equivalent values is  $CuEq (\%) = Cu\% + (Au \text{ g/t} * 0.7130) + (Ag \text{ g/t} * 0.0091)$  计算铜当量的公式为：铜当量 (%) = 铜% + (金克/吨\*0.7130) + (银克/吨\*0.0091)

**Regulus has a growing portion of a large copper-gold sulphides deposit in the district. / 在该区域内Regulus的大型铜金硫化物矿床不断扩张**

# 7

## SIGNIFICANT RESOURCE IN HAND WITH HIGH GRADE NEAR SURFACE & LOW STRIP

已确定大量高品位、近地表的资源量，剥采比低



### High Grade Near Surface 高品位、近地表

- Approximately 36% of total tonnes within the top 300 m of the deposit are >0.7% CuEq 在矿床的最上层300米中，约36%的矿石铜当量>0.7%
- Approximately 59% of total tonnes within the top 300 m of the deposit are >0.5% CuEq 在矿床的最上层300米中，约59%的矿石铜当量>0.5%
- Combined strip ratio (including Coimolache's data) of open pit is 0.85/1 露天矿床的合并剥采比（包括Coimolache的数据）是0.85/1

## 8

# DELIVERED 5/20 TOP CUEQ INTERCEPTS REPORTED BY JUNIORS SINCE 2018

Rank	Property	Hole ID	Company	From (m)	To (m)	Interval (m)	Cu %	Au g/t	Ag g/t	CuEq %	CuEq x m
1	Cascabel	CSD-18-067	SolGold	886.00	1,914.00	1,028.00	0.710	0.910	NA	1.36	1,397
2	Cascabel	CSD-18-068	SolGold	1,004.40	1,668.40	664.00	0.880	1.030	NA	1.61	1,072
3	AntaKori	AK-19-031	Regulus Resources	3.70	613.90	610.20	0.840	1.020	10.280	1.66	1,013
4	Cascabel	CSD-18-069	SolGold	740.00	1,592.00	852.00	0.770	0.570	NA	1.18	1,002
5	Filo del Sol	FSDH032	Filo Mining Corporation	132.00	1,141.00	1,009.00	0.570	0.390	11.100	0.95	958
6	Tatogga	TTD109	GT Gold Corp.	11.33	1,161.00	1,149.67	0.360	0.620	1.170	0.81	934
7	Cascabel	CSD-18-042	SolGold	278.00	1,124.00	846.00	0.710	0.500	NA	1.07	902
8	Cascabel	CSD-18-041-D1-D2	SolGold	926.00	1,779.00	853.00	0.520	0.620	NA	0.96	821
9	Tatogga	TTD109	GT Gold Corp.	384.42	1,161.00	776.58	0.440	0.840	1.520	1.05	818
10	AntaKori	AK-18-014	Regulus Resources	4.70	718.69	713.99	0.680	0.380	7.590	1.02	728
11	Cascabel	CSD-18-043	SolGold	600.00	1,574.00	974.00	0.480	0.370	NA	0.74	724
12	KSM	IC-18-82A	Seabridge Gold	428.00	1,446.20	1,018.20	0.370	0.440	1.600	0.70	711
13	Filo del Sol	FSDH034	Filo Mining Corporation	72.00	1,106.00	1,034.00	0.420	0.320	3.400	0.68	702
14	Cascabel	33-D1	SolGold	736.00	NA	824.00	0.540	0.420	NA	0.84	692
15	Warintza	SLS-03	Solaris Resources	4.00	1,014.00	1,010.00	0.590	0.100	NA	0.66	668
16	AntaKori	AK-18-026	Regulus Resources	640.50	1,113.70	473.20	1.160	0.210	8.430	1.39	656
17	Tatogga	TTD112	GT Gold Corp.	21.00	705.90	684.90	0.444	0.696	1.088	0.95	651
18	AntaKori	AK-18-021	Regulus Resources	127.00	746.20	619.20	0.670	0.430	7.300	1.04	646
19	Altar	ALD-18-209	Aldebaran Resources	482.00	1,536.50	1,054.50	0.492	0.149	1.485	0.61	645
20	AntaKori	AK-19-034	Regulus Resources	165.25	985.15	819.90	0.530	0.240	7.830	0.77	633

5 of the top 20 CuEq intercepts since January 2018

3 of the 5 best AntaKori intercepts are not incorporated in the current resource estimate\* (AK-18-026, AK-19-031 & AK-19-034)

Majority of top AntaKori holes start near or at surface

As per SNL financial, as of Jan 18, 2021, SNL search criteria include: >450 m interval, primarily copper interval & reported after Jan 1, 2018. Only longest reported interval considered. Any interval from a company with production is excluded CuEq estimates calculated using US\$2.25 Cu, US\$1,100 Au and US\$14 Ag. The formulas utilized to calculate equivalent values are CuEq (%) = Cu% + (Au g/t \* 0.7130) + (Ag g/t \* 0.0091). Primarily copper: copper must make up at least 40% of the in situ value.

\*AK-18-026 was drilled prior to the resource update, however the referenced intercept lacked supporting nearby drill holes to be considered in resource estimation. AK-19-31 was drilled after the resource estimation and was an infill hole which will likely improve grade and convert inferred to indicated. AK-19-034 was drilled after the resource estimation and was in a previously untested area.

# 8 自2018年初级矿业公司报告的矿段中铜当量含量在20个中排名前五位

排名	项目区	钻孔号	公司	自 (m)	至(m)	矿段 (m)	铜%	金克/吨	银克/吨	铜当量%	铜当量x米
1	Cascabel	CSD-18-067	SolGold	886.00	1,914.00	1,028.00	0.710	0.910	NA	1.36	1,397
2	Cascabel	CSD-18-068	SolGold	1,004.40	1,668.40	664.00	0.880	1.030	NA	1.61	1,072
3	AntaKori	AK-19-031	Regulus Resources	3.70	613.90	610.20	0.840	1.020	10.280	1.66	1,013
4	Cascabel	CSD-18-069	SolGold	740.00	1,592.00	852.00	0.770	0.570	NA	1.18	1,002
5	Filo del Sol	FSDH032	Filo Mining Corporation	132.00	1,141.00	1,009.00	0.570	0.390	11.100	0.95	958
6	Tatogga	TTD109	GT Gold Corp.	11.33	1,161.00	1,149.67	0.360	0.620	1.170	0.81	934
7	Cascabel	CSD-18-042	SolGold	278.00	1,124.00	846.00	0.710	0.500	NA	1.07	902
8	Cascabel	CSD-18-041-D1-D2	SolGold	926.00	1,779.00	853.00	0.520	0.620	NA	0.96	821
9	Tatogga	TTD109	GT Gold Corp.	384.42	1,161.00	776.58	0.440	0.840	1.520	1.05	818
10	AntaKori	AK-18-014	Regulus Resources	4.70	718.69	713.99	0.680	0.380	7.590	1.02	728
11	Cascabel	CSD-18-043	SolGold	600.00	1,574.00	974.00	0.480	0.370	NA	0.74	724
12	KSM	IC-18-82A	Seabridge Gold	428.00	1,446.20	1,018.20	0.370	0.440	1.600	0.70	711
13	Filo del Sol	FSDH034	Filo Mining Corporation	72.00	1,106.00	1,034.00	0.420	0.320	3.400	0.68	702
14	Cascabel	33-D1	SolGold	736.00	NA	824.00	0.540	0.420	NA	0.84	692
15	Warintza	SLS-03	Solaris Resources	4.00	1,014.00	1,010.00	0.590	0.100	NA	0.66	668
16	AntaKori	AK-18-026	Regulus Resources	640.50	1,113.70	473.20	1.160	0.210	8.430	1.39	656
17	Tatogga	TTD112	GT Gold Corp.	21.00	705.90	684.90	0.444	0.696	1.088	0.95	651
18	AntaKori	AK-18-021	Regulus Resources	127.00	746.20	619.20	0.670	0.430	7.300	1.04	646
19	Altar	ALD-18-209	Aldebaran Resources	482.00	1,536.50	1,054.50	0.492	0.149	1.485	0.61	645
20	AntaKori	AK-19-034	Regulus Resources	165.25	985.15	819.90	0.530	0.240	7.830	0.77	633

自2018年1月以来的最好的20个铜当量矿段中排名第五。

五个最好的AntaKori 矿段中的三个没有包含在当前资源量预估值中\* (AK-18-026, AK-19-031 & AK-19-034)

最好的AntaKori钻孔中大多数都始于地表或近地表。

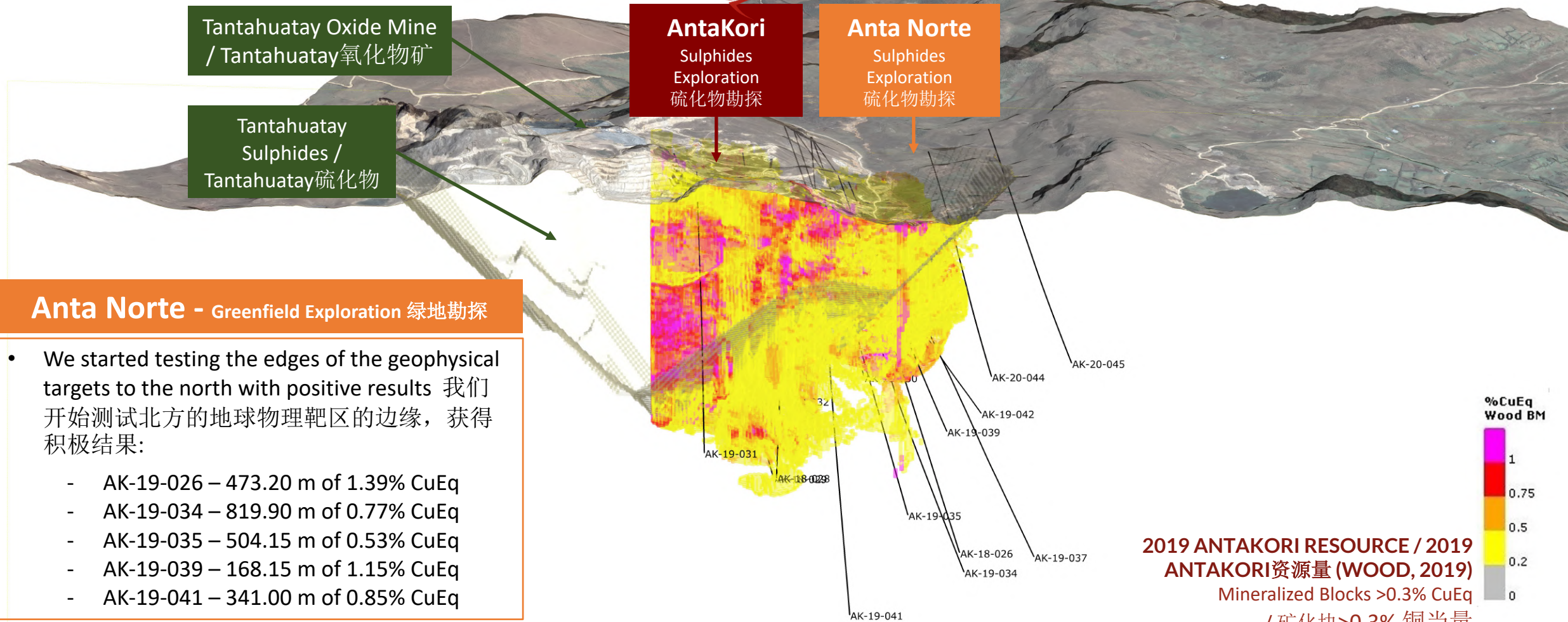
根据SNL financial, 截至2021年1月18日, SNL的检索标准包括: >450米的矿段, 主要是铜矿段, 并在2018年1月1日之后报告。只考虑最长的矿段。不包括来自自有生产的公司的任何矿段。铜当量估算使用金价=1100美元/盎司, 铜价=2.25美元/磅; 银价=14美元/盎司。计算铜当量的公式为: 铜当量 (%) = 铜% + (金克/吨\*0.7130) + (银克/吨\*0.0091)。主要是铜: 铜必须至少占原位价值的40%。

\*AK-18-026是在资源量更新之前钻探的, 但是所参考的矿段缺乏附近的支持性钻孔, 因此在资源估算中无法考虑。AK-19-31是在资源评估后钻探的, 是一个加密钻孔, 很可能会提高品位, 并将推断资源量提升为指示资源量。AK-19-034是在资源量评估后钻探的, 位于以前未测试的区域。

Mineralization is open to the north

矿化结构向北开放

3D map looking to northwest  
西北向的三维地图



### Anta Norte - Greenfield Exploration 绿地勘探

- We started testing the edges of the geophysical targets to the north with positive results 我们开始测试北方的地球物理靶区的边缘，获得积极结果：
  - AK-19-026 – 473.20 m of 1.39% CuEq
  - AK-19-034 – 819.90 m of 0.77% CuEq
  - AK-19-035 – 504.15 m of 0.53% CuEq
  - AK-19-039 – 168.15 m of 1.15% CuEq
  - AK-19-041 – 341.00 m of 0.85% CuEq

2019 ANTAKORI RESOURCE / 2019  
ANTAKORI资源量 (WOOD, 2019)

Mineralized Blocks >0.3% CuEq

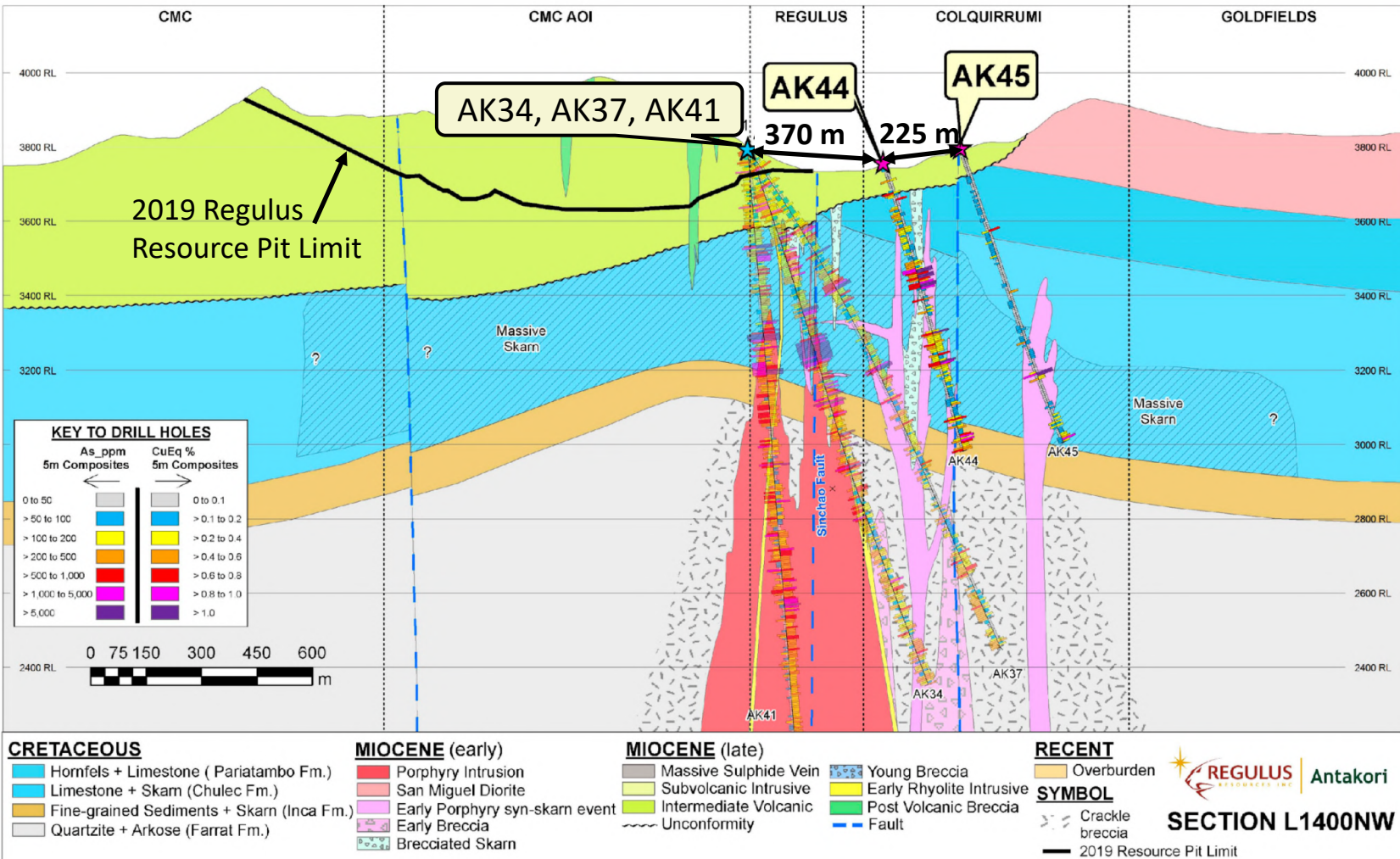
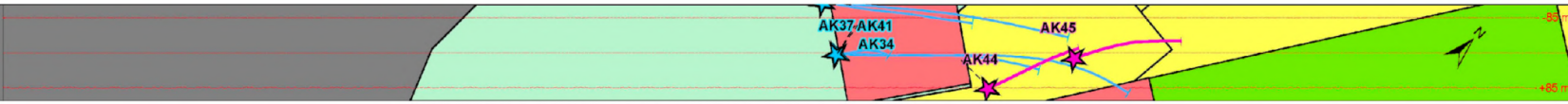
/ 矿化块>0.3% 铜当量

Potential to expand the pit to capture existing resource blocks and find new mineralization in this area.

扩大矿坑找到现有资源量块以及在此区域发现新的矿化结构的潜力

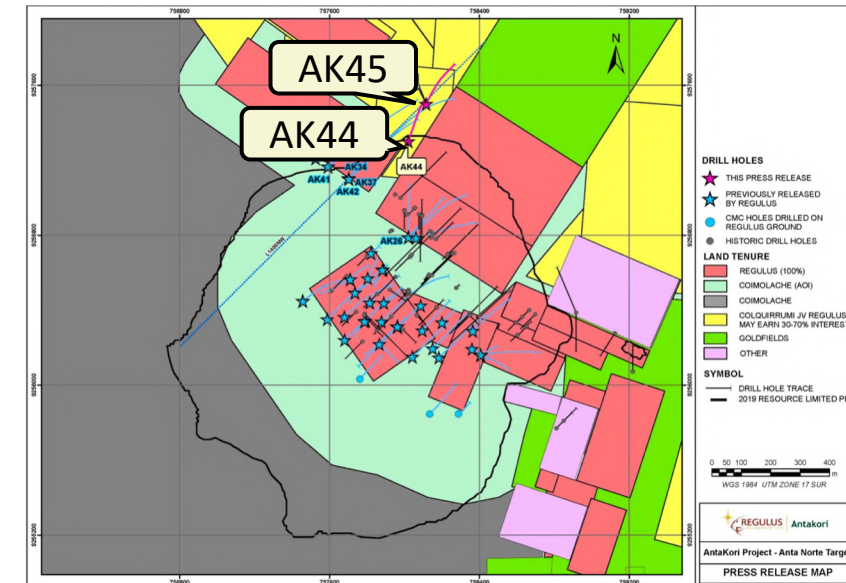
# 9 SIGNIFICANT GROWTH POTENTIAL 巨大增长潜力

Mineralization extends to the north 矿化结构向北延伸



Large Step Out Holes at Anta Norte Have Extended the Mineralized Footprint / Anta Norte的大规模探边钻孔已经延伸矿化结构的范围。

- AK37 to AK44 distance 369.47m / AK37至AK44的距离为369.47米。
- AK44 to AK45 distance 226.36m / AK44至AK45的距离为226.36米。
- Reportable mineralization intercepted in all holes 所有钻孔中均有可报告的矿段。





## SUSTAINABLE VALUE FOR ALL STAKEHOLDERS 为股东创造可持续的价值



### ACTIVELY INVOLVED IN LONG-TERM COMMUNITY AND ENVIRONMENTAL PROJECTS

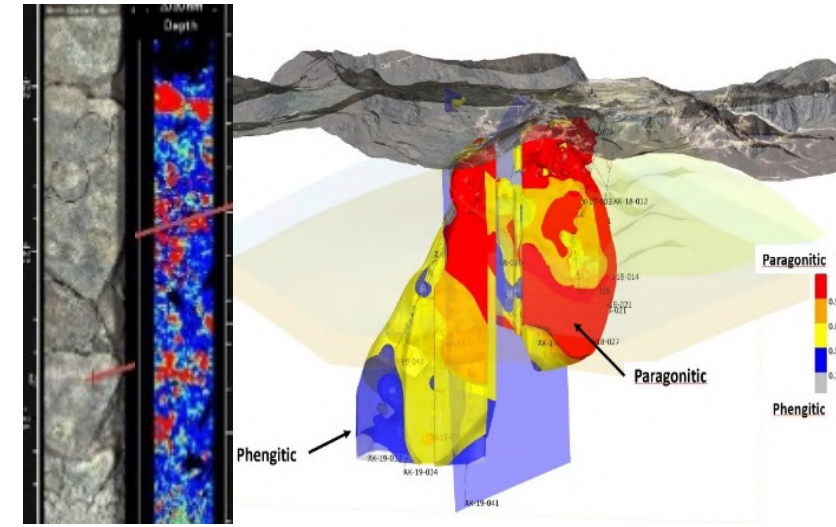
积极参与长期社区和环境项目

Regulus has a **collaborative approach on the ground to work on long-term projects** with local communities to increase agricultural yield, support improved health and education, and carry out environmental remediation work. / Regulus在当地采取合作方式，与当地社区开展长期项目，以提高农业产量，支持改善健康和教育，并开展环境整治工作。



### LARGE DEPOSIT WITH POTENTIAL FOR MULTIGENERATIONAL MINE LIFE 大型矿床，矿山寿命长，有望惠及几代人

Regulus is advancing AntaKori as a world-class copper-gold deposit that has the potential to have a long mine life which would continue **local employment for generations to come.** / Regulus正在推动AntaKori成为世界级的铜金矿床，该矿床具有矿山寿命长的潜力，将使当地的就业机会延续到未来。



### A TECHNICAL APPROACH THAT WILL FACILITATE MINING ANTAKORI 方便ANTAKORI开采的技术方法

Unlike many juniors, Regulus extensively collects data sets, e.g. petrographic and hyperspectral data (Core Scan), which will facilitate the mining of AntaKori and **adds considerable value to the project in the eyes of a major** looking to acquire Regulus. 与许多初级公司不同，Regulus广泛收集数据集，如岩相和高光谱数据（核心扫描），这将促进AntaKori的开采，并在希望收购Regulus的大公司眼中为该项目增加相当大的价值。

TSXV-REG



PLEASE CONTACT US WITH ANY QUESTIONS:  
如有问题请联系我们:

John Black, CEO & Director 首席执行官兼董事 | john.black@regulusresources.com | +1 303-618-7797  
Laura Brangwin, Investor Relations 投资者关系 | laura.brangwin@regulusresources.com | +1 646-583 1404

[www.regulusresources.com](http://www.regulusresources.com)

TIER ONE ASSET IN THE  
MAKING 正在形成一级资产



PROVEN STRATEGY  
经验证的策略



QUALITY PARTNERS  
优质的合作伙伴

