



scottie

RESOURCES CORP

High-Grade **GOLD** 高品位**黄金**
High-Grade **POTENTIAL** 高品位**潜力**

TSX.V: SCOT – FSE: SR8 – OST: SCTSF

FORWARD LOOKING STATEMENT 前瞻性声明

2

Forward-looking statements relate to future events or the anticipated performance of the Company and reflect management's expectations or beliefs regarding such future events and anticipated performance. In certain cases, forward-looking statements can be identified by the use of words such as "plans", "expects", "is expected", "budget", "scheduled", "estimates", "forecasts", "intends", "anticipates" or "believes", or variations of such words and phrases or statements that certain actions, events or results "may", "could", "would", "might" or "will be taken", "occur" or "be achieved", or the negative of these words or comparable terminology. By their very nature forward-looking statements involve known and unknown risks, uncertainties and other factors which may cause the actual performance of the Company to be materially different from any anticipated performance expressed or implied by the forward-looking statements.

Important factors that could cause actual results to differ from these forward-looking statements include risks related to failure to define mineral resources, to convert estimated mineral resources to reserves, the grade and recovery of ore which is mined varying from estimates, future prices of gold and other commodities, capital and operating costs varying significantly from estimates, political risks arising from operating in certain jurisdictions, uncertainties relating to the availability and costs and availability of financing needed in the future, changes in equity markets, inflation, changes in exchange rates, fluctuations in commodity prices, delays in the development of projects, conclusions of economic evaluations, changes in project parameters as plans continue to be refined, uninsured risks and other risks involved in the mineral exploration and development industry.

Although the Company has attempted to identify important factors that could cause actual performance to differ materially from that described in forward-looking statements, there may be other factors that cause its performance not to be as anticipated. There can be no assurance that forward-looking statements will prove to be accurate, as actual results and future events could differ materially from those anticipated in such statements. Accordingly, readers should not place undue reliance on forward-looking statements. These forward-looking statements are made as of the date of this presentation and the Company does not intend, and does not assume any obligation, to update these forward-looking statements.

† **Qualified Persons**

Thomas Mumford, Ph.D., P.Geo., Scottie Resources Corp., is the Qualified Person as defined by National Instrument 43-101 (NI 43-101) for the Scottie Gold Project, and has verified the data disclosed in this presentation, including sampling, analytical, and test data underlying the information disclosure.

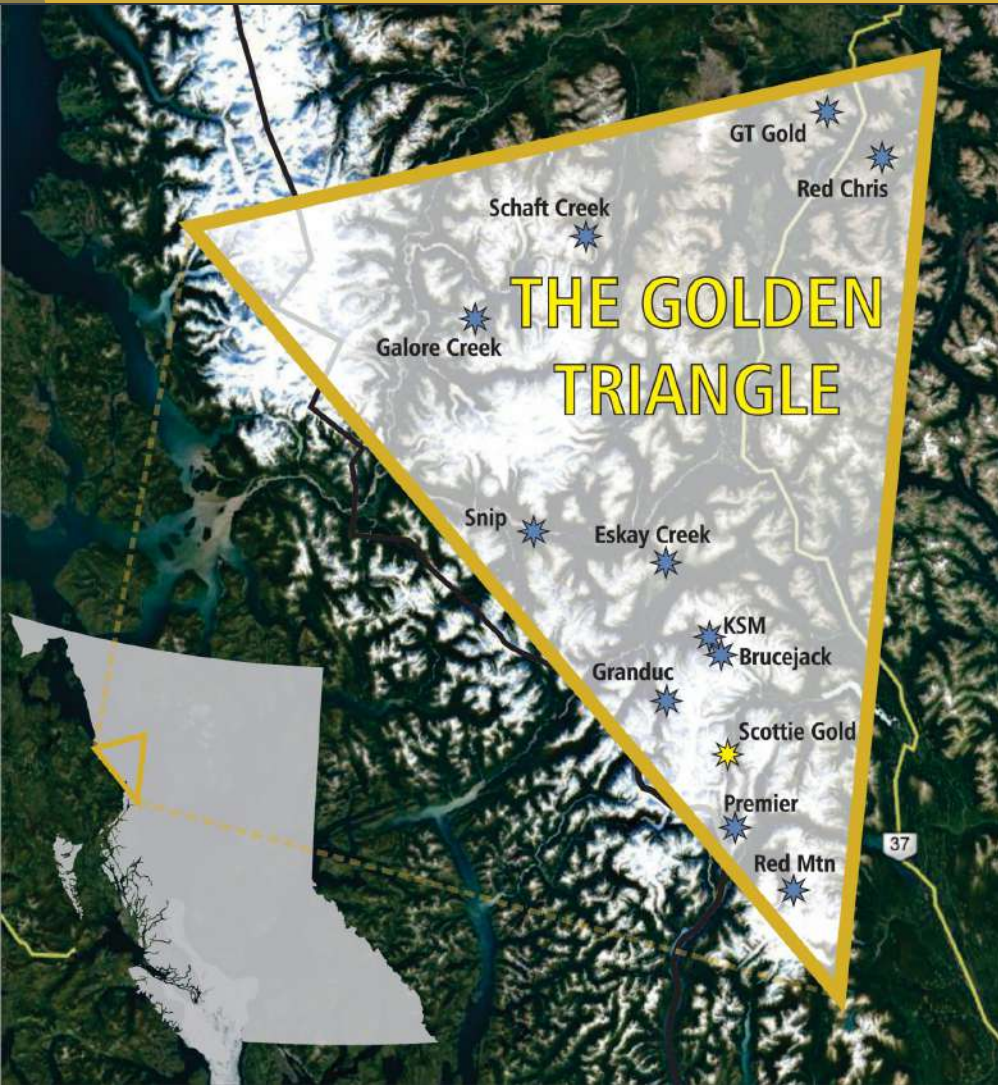
DIRECTORS & SENIOR MANAGEMENT 董事和高级管理层

3

Bradley Rourke	President & CEO, Director 总裁兼首席执行官, 董事	A Corporate Finance Executive with 30 years experience in Mining, Energy, Forestry and Real Estate, he holds a proven track record with successful start-up companies. 在矿业、能源、林业和房地产领域有30年经验的企业财务高管, 拥有在成功的创业公司的履历。
Thomas Mumford, Ph.D, P.Geo 博士、专业地质学家	VP Exploration 勘探副总裁	Professional exploration geologist with a comprehensive field, technical and academic background in the Golden Triangle mining district. 专业勘探地质学家, 拥有在金三角采矿地区综合的野外、技术和学术背景。
Ernest Mast, M. Eng., P. Eng. 工程学硕士、专业工程师	Director 董事	Former President and CEO, Primero Mining, former President and CEO of Minera Panama. Over 25 years experience in all stages of mining projects in Canada, USA, Mexico, Dominican Republic, Panama, Chile and Australia. / Primero Mining前总裁和首席执行官, Minera Panama前总裁和首席执行官。拥有超过25年在加拿大、美国、墨西哥、多米尼加共和国、巴拿马、智利和澳大利亚的各个阶段采矿项目的经验。
John Williamson, P. Geo. 专业工程师	Director 董事	Professional geologist and entrepreneur with over 30 years global mining experience, including as founder, director and officer of numerous public companies. 专业地质学家和企业家, 拥有30多年的全球采矿经验, 包括担任多家上市公司的创始人、董事和高管。
Steven Stein	Director 董事	Steven Stein was a founding shareholder and an Officer of the Black Diamond Group. Steve is currently a Director of the Black Diamond Group. Steven was actively involved in the operations and a founder of one of the predecessor companies of the Outland Group – one of Canada's largest logistics and camp businesses. / Steven Stein曾是Black Diamond Group的创始股东和高管, 目前是该公司董事。他还曾积极投身于加拿大最大的物流和采矿营业务之一——Outland Group一家前身公司的运营中, 是创始人。
Christina Boddy, B.Sc. 理学学士	Corporate Secretary 公司秘书	Experienced Corporate Secretary for a number of public companies including ALX Resources Corp., Nevada Sunrise Gold Corporation, and Aton Resources Inc. Ms. Boddy acts as a consultant to public and private companies through Rhodanthe Corporate Services. / Boddy女士曾担任多家上市公司的秘书, 包括ALX Resources Corp.、Nevada Sunrise Gold Corporation和Aton Resources Inc., 通过Rhodanthe Corporate Services为多家上市公司和私人公司担任顾问。
Stephen Sulis	CFO 首席财务官	Stephen Sulis has previous experience in the financial sector with TD Canada Trust and is currently working with a number of public and private companies in the resource and technology industries providing accounting and consulting services. / Stephen Sulis曾在道明加拿大信托公司的金融部门任职, 目前正与资源和技术行业的多家上市和私营公司合作, 提供会计和咨询服务。

SCOTTIE GOLD PROJECT / SCOTTIE黄金项目

4



KEY ASSET 关键资产

High-grade past-producer 高品位的历史生产商

Mesothermal gold-pyrrhotite veins 深成中温热液金-磁黄铁矿矿脉

All weather road access, deep water port 全年通车的道路, 深水港

Pretium transmission line <1 km away / Pretium输电线路<1公里外

6 portals, shafts, rail system, 7 km of drifts

6个入口、竖井、轨道系统、7公里长的巷道

Flat areas for new infrastructure

用于新基础设施的平坦地区

Historic tailings on site

现场的历史尾矿

CURRENT LAND PACKAGE / 当前的土地范围

5

25,360 ha of prospective ground in the
GOLDEN TRIANGLE

金三角地区25,360公顷有前景的土地

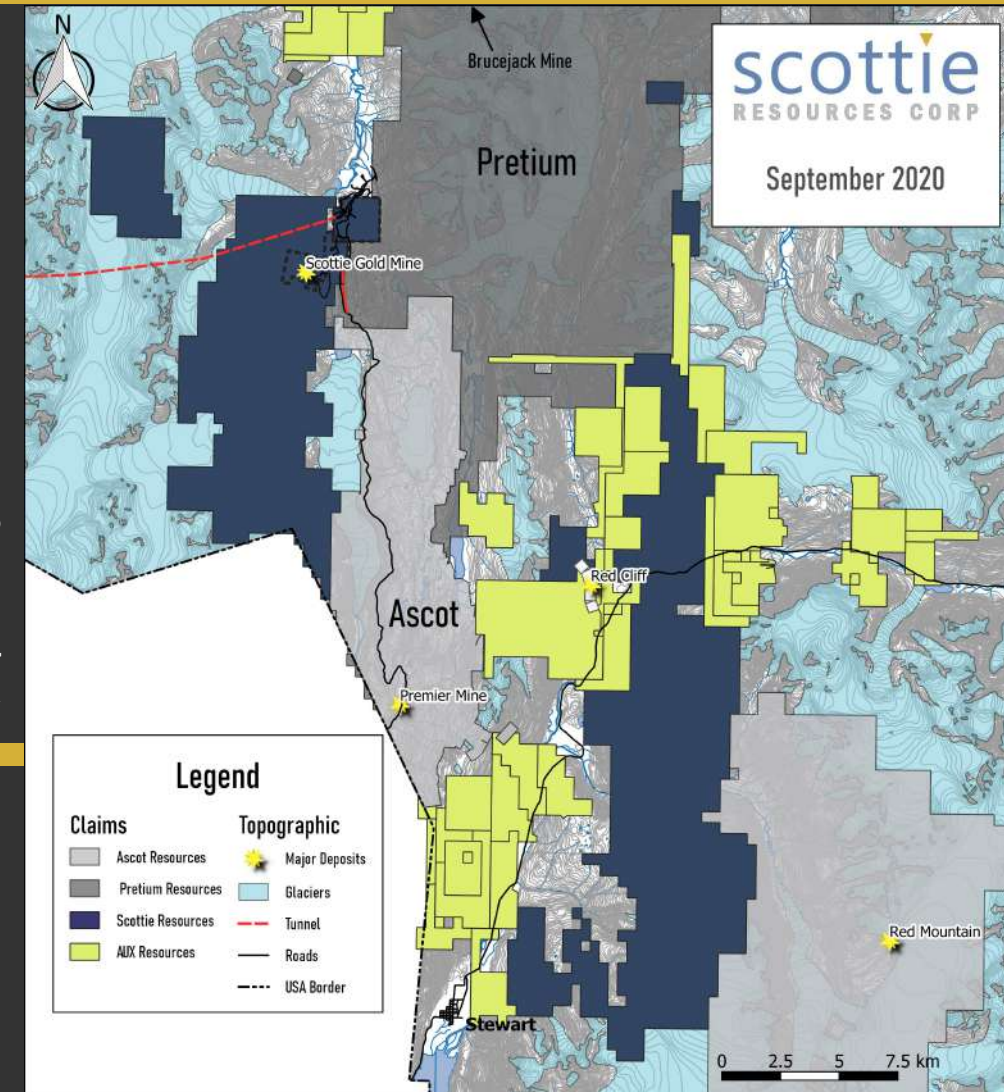
Transactions in early 2020 / 2020年初的交易

Decreased % of optioned claims from 36% to 6.4%
将有选择权的矿权区的比例从36%降至6.4%

Acquired an additional 5476 ha
又收购了5476公顷的土地

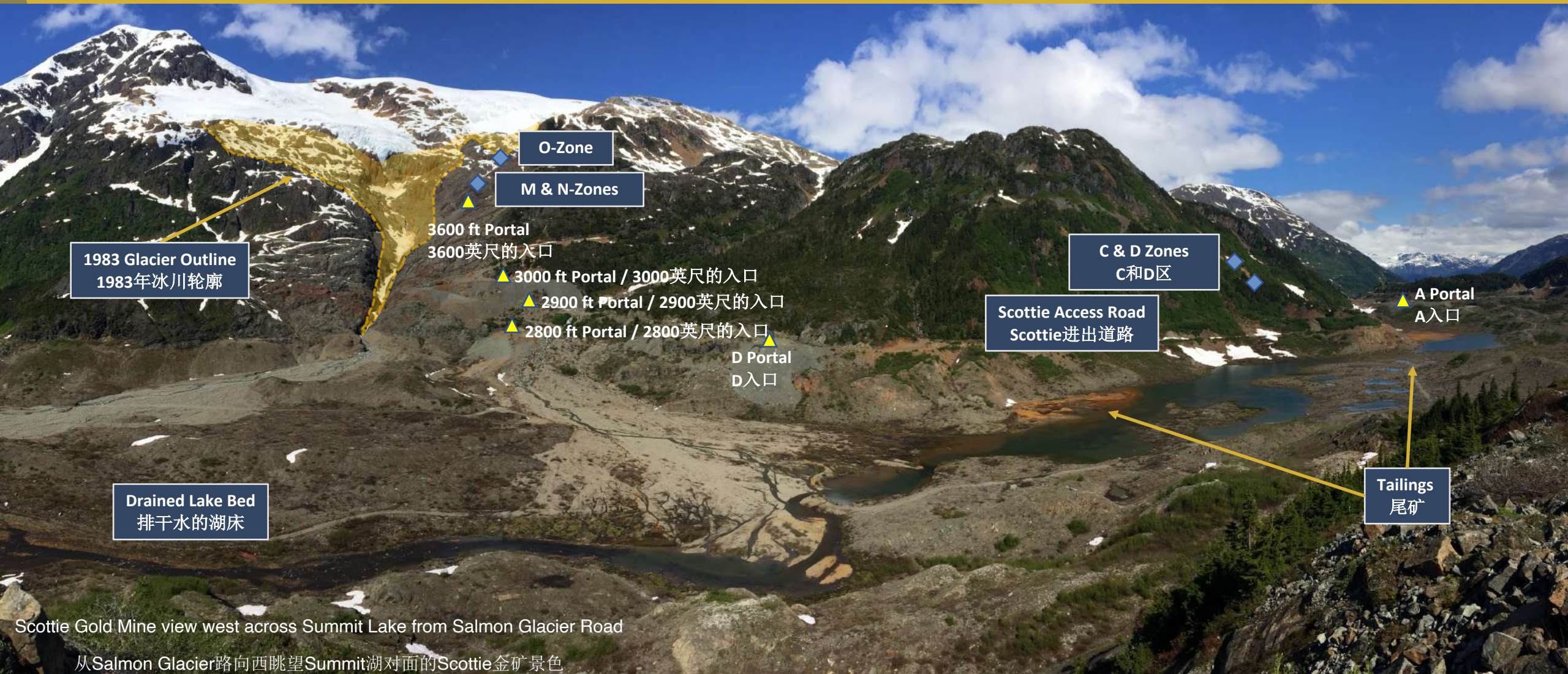
Dozens of Minfile occurrences on the newly acquired claims
在新收购的矿权区内出现了几十处Minfile

Aggressive glacial retreat = considerable exploration advantage
大规模的冰川后退=相当大的勘探优势



SCOTTIE GOLD MINE / SCOTTIE黄金矿

6



SCOTTIE GOLD MINE PROJECT / SCOTTIE金矿项目

KEY TARGETS – Past **GOLD** Intercepts *

关键靶区—历史**黄金**矿段*

Scottie Gold Mine

Scottie黄金矿

108.30 g/t over 3.38 m

3.38米矿段中见金品位108.30克/吨

****107.70 g/t over 4.18 m**

4.18米矿段中见金品位107.70克/吨

11.72 g/t over 10.95 m

10.95米矿段中见金品位11.72克/吨

Domino Zone / Domino区

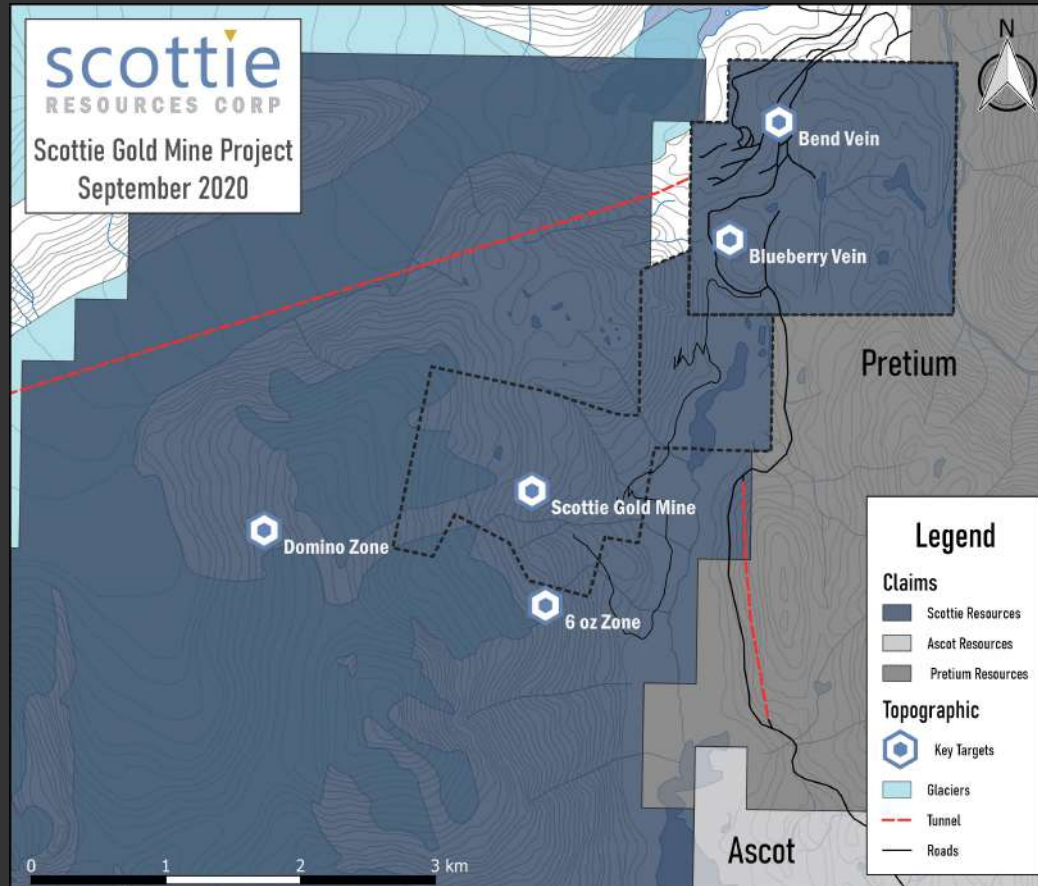
First drilling in 2020!

2020年首次钻探!

6 oz Zone / 6 oz区

First drilling in 2020!

2020年首次钻探!



Bend Vein / Bend矿脉

70.65 g/t over 4.17 m

4.17米矿段中见金品位70.65克/吨

****73.32 g/t over 4.28 m**

4.28米矿段中见金品位73.32克/吨

23.03 g/t over 4.67 m

4.67米矿段中见金品位23.03克/吨

Blueberry Vein / Blueberry矿脉

15.39 g/t over 7.98 m

7.98米矿段中见金品位15.39克/吨

****7.44 g/t over 34.78 m**

34.78米矿段中见金品位7.44克/吨

26.6 g/t over 1.59 m

1.59米矿段中见金品位26.6克/吨

*not all intercepts represent true widths
并非所有矿段都代表真实宽度

**drilled in 2019 / 2019年的钻探

SUMMIT LAKE CLAIMS / SUMMIT LAKE矿权区

8

2019 NEW MINERAL OCCURENCES – Grab Samples

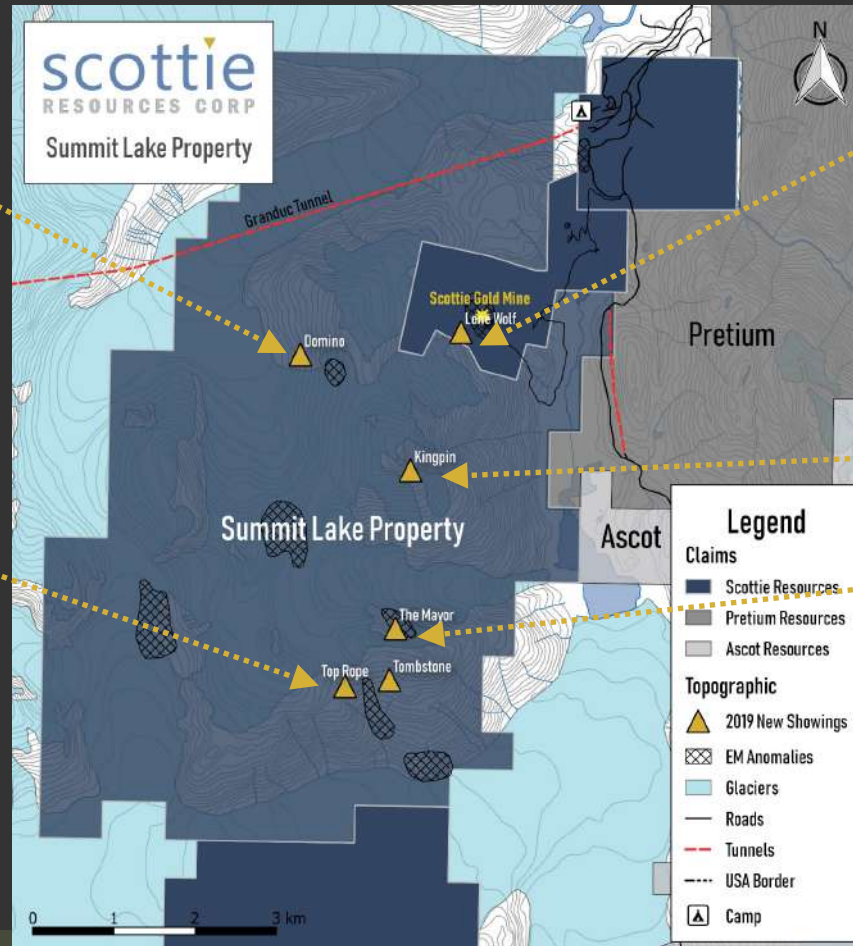
2019年新的矿产出现—采集样本

DOMINO

Gold 金 (g/t 克/吨)	Silver 银 (g/t 克/吨)
536	129
63.0	32.9
34.3	19.7

TOP ROPE / TOMBSTONE

Gold 金 (g/t 克/吨)	Silver 银 (g/t 克/吨)
5.41	2290
2.62	44.6
2.23	19.7



LONE WOLF

Gold 金 (g/t 克/吨)	Silver 银 (g/t 克/吨)
4.04	90
1.03	12.9
0.289	33

KINGPIN

Gold 金 (g/t 克/吨)	Silver 银 (g/t 克/吨)
26.9	168
12.8	370
34.3	8.33

THE MAYOR

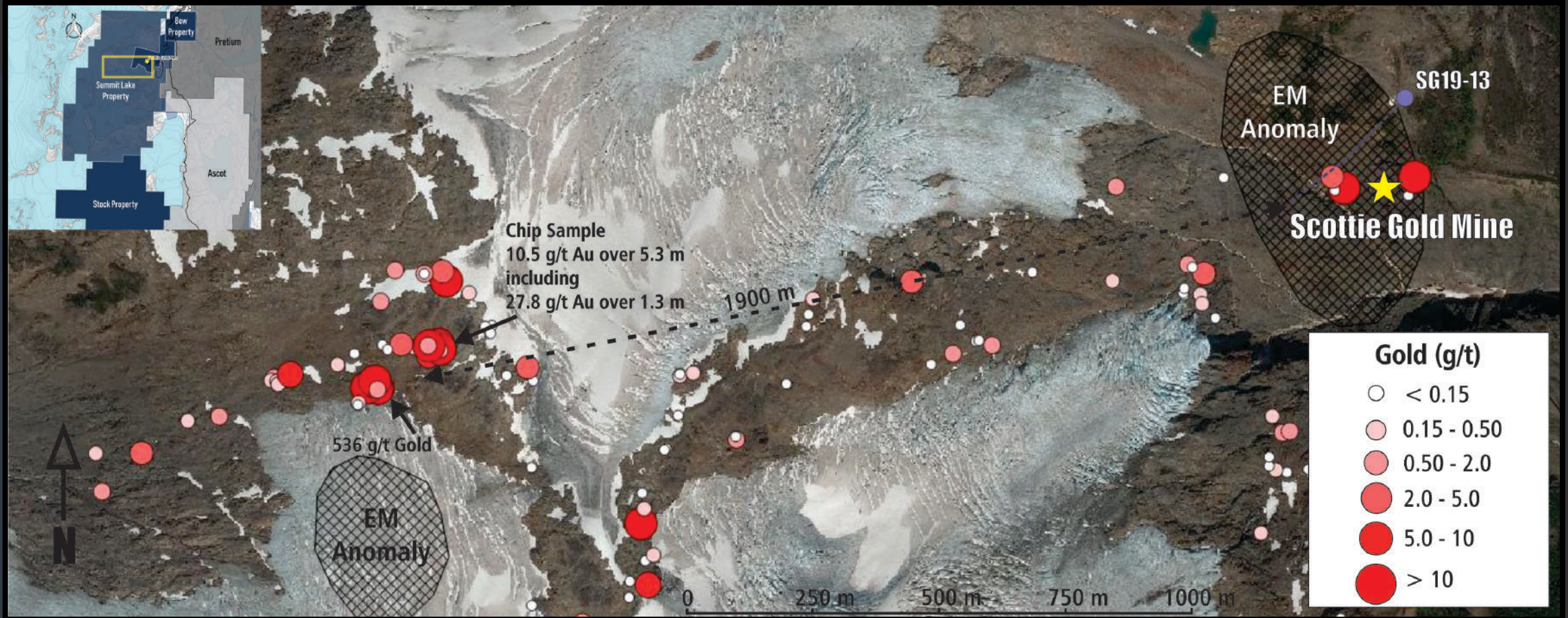
Gold 金 (g/t 克/吨)	Silver 银 (g/t 克/吨)
9.48	2000
3.64	130
0.57	144

SUMMIT LAKE CLAIMS / SUMMIT LAKE矿权区

9

2019 DOMINO ZONE GRAB SAMPLING

2019年 Domino区采集取样



SUMMIT LAKE CLAIMS / SUMMIT LAKE矿权区

10

2020 DOMINO ZONE GRAB SAMPLING & GEOPHYSICS 2020年Domino区采集取样和地球物理学

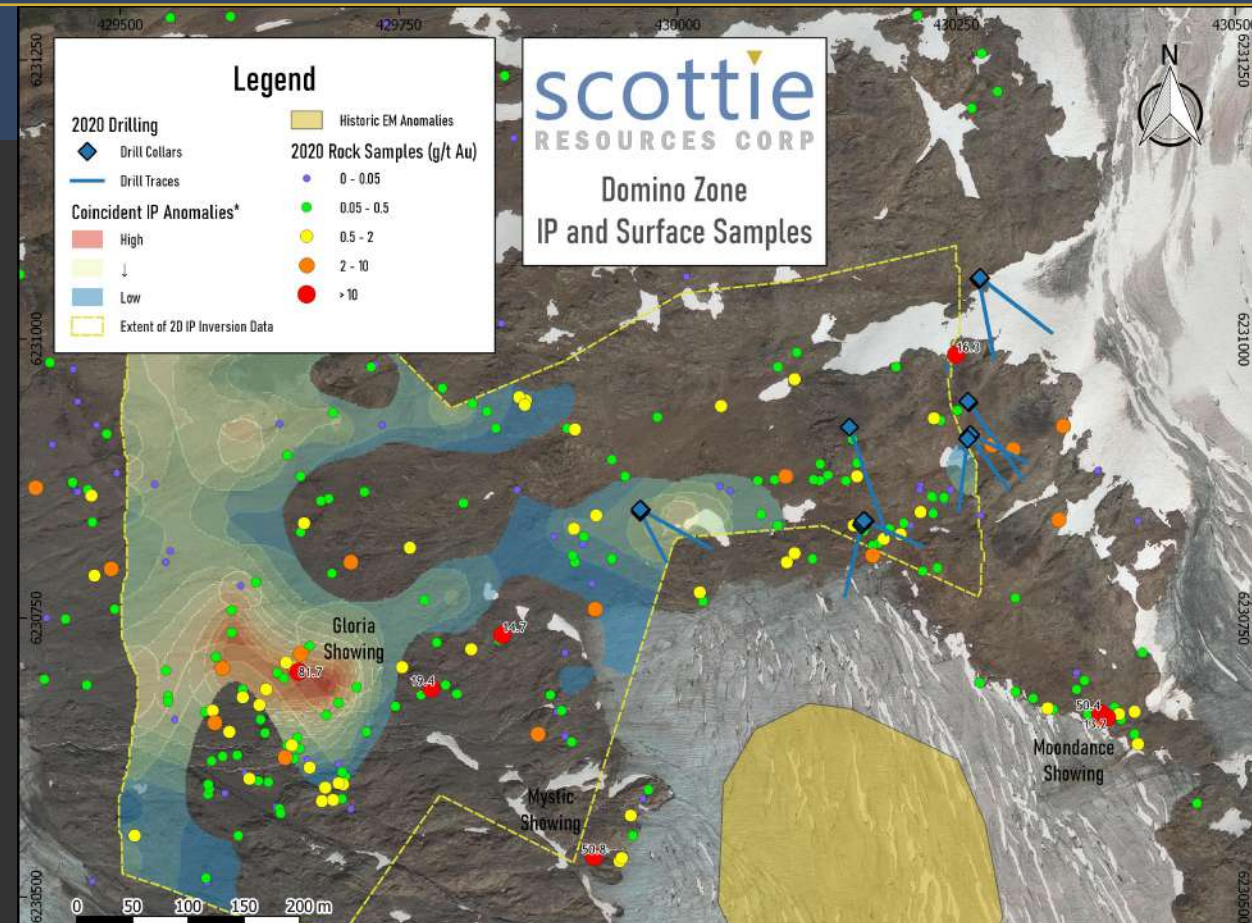
News Release – January 14, 2021
2021年1月14日新闻稿

3 new **high-grade** showings

三个新的高品位表象区
each with grab samples > 50 g/t gold
每一个采集取样金品位超过50克/吨

Coincident IP anomalies
重合的IP异常

Increased extent 900 x 450 m
增加了900x450米的范围



SUMMIT LAKE CLAIMS / SUMMIT LAKE矿权区

11

2020 DRILLING - DOMINO ZONE

2020年在Domino区的钻探

NEVER DRILL TESTED!!

从未经过钻探测试!!

Following up on 2019 **BONANZA** grade samples

跟进2019年**富矿脉**品位的样本

First pass grab samples: 536 g/t, 63 g/t, 34.3 g/t gold

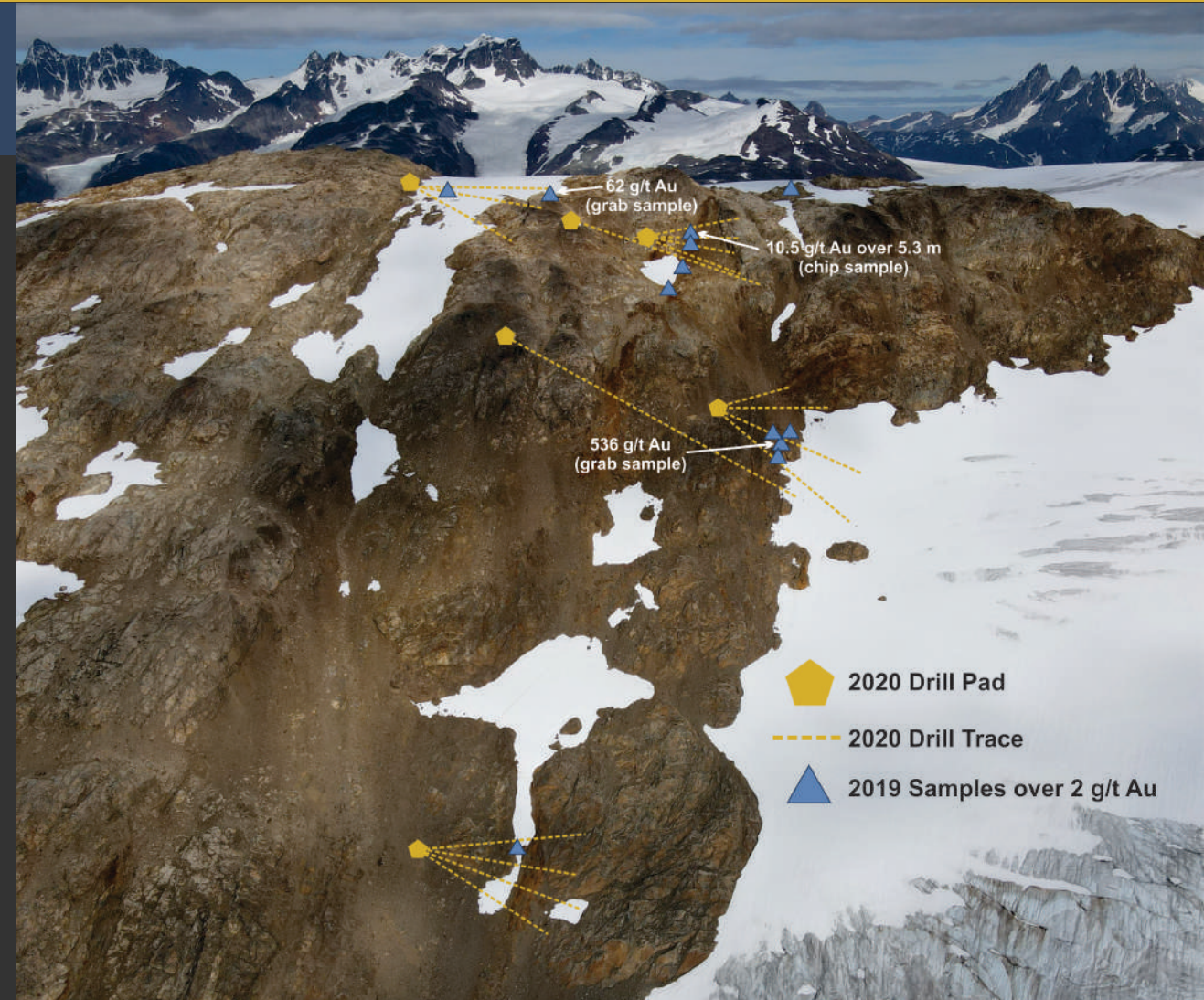
第一道采集样本：金品位536克/吨、63克/吨、34.3克/吨

Chip sample: 5.3 m of 10.5 g/t gold

岩屑样本：5.3米内见金品位10.5克/吨

18 holes drilled (1,900+ m)

钻下了18个钻孔（超过1900米）



SCOTTIE GOLD MINE / SCOTTIE黄金矿

12

HISTORIC TAILINGS 历史尾矿

14 holes, 3 m max depth, n=74

14个孔, 最大深度3米, n=74

0.2 – 6.2 Au g/t grades

金品位0.2-6.2克/吨

Horizontal and vertical gradation

水平和垂直分级

Average of 2.1 g/t (as sampled)

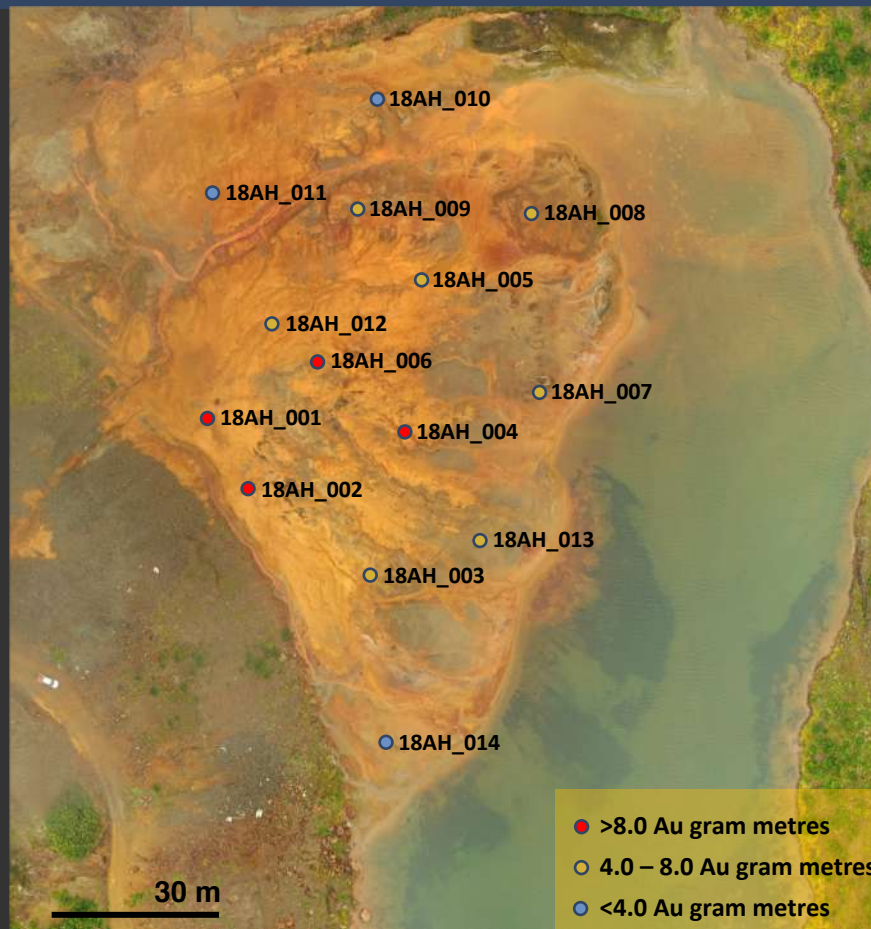
平均品位2.1克/吨(如取样)

Benchtop tests: 77 - 83% recovery

台式测试: 77-83%的采收率

Historic production = 180k tonnes

历史产量: 18万吨



SCOTTIE GOLD MINE / SCOTTIE黄金矿

ACHIEVED DURING 2020 SEASON

2020勘探季实现

7,000 m surface-based drill program / 7000米的地表钻探计划

Airborne EM survey 航空电磁测量

IP survey over select targets 对选定靶区的激发极化IP测量

Detailed surface sampling and mapping of newly identified targets 对新确定的靶区进行详细的地表取样和测绘

Metallurgical testing of tailings 尾矿的冶金测试



2020 DRILL RESULTS / 2020年钻探结果

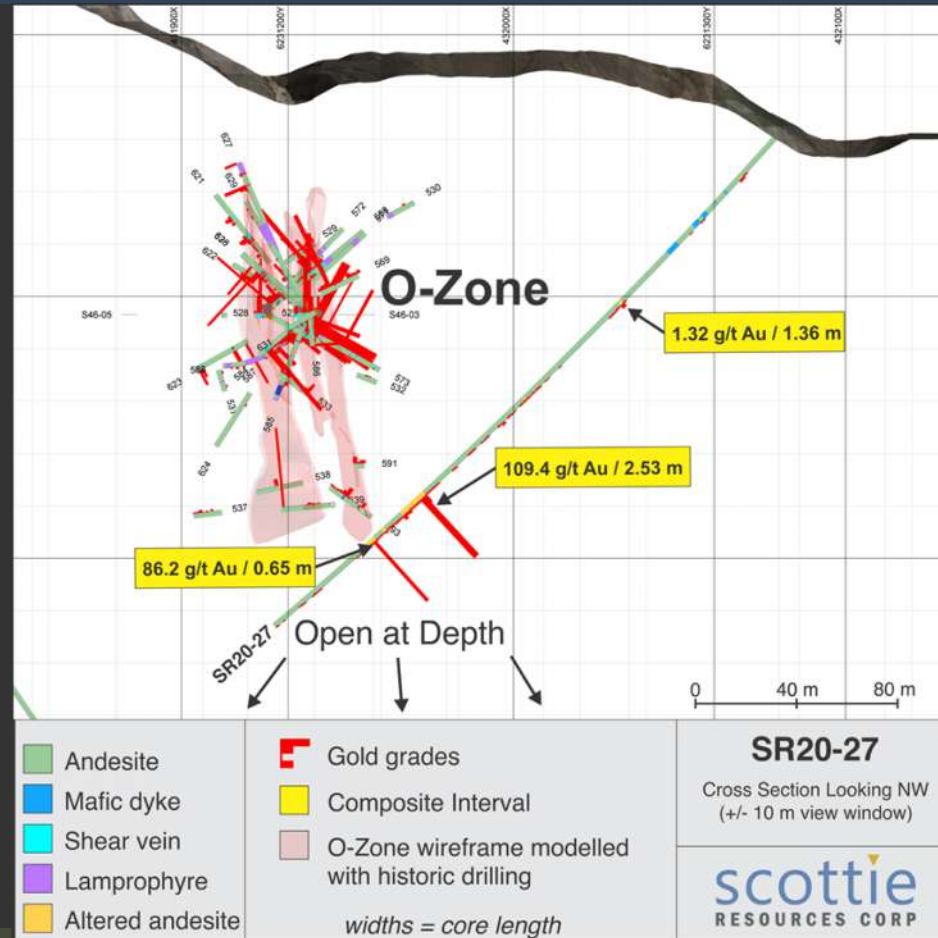
News Release – October 6, 2020
2020年10月6日的新闻稿

Scottie Gold Mine Scottie金矿 O-Zone

**109.40 g/t gold over
2.53 m**

**金品位109.40克/吨的
2.53米矿段**

86.2 g/t gold over 0.65 m
0.65米矿段中见金品位86.2克/吨



Blueberry Vein Blueberry矿脉

2.05 g/t gold over 44 m
44米矿段中见金品位2.05克/吨
4.97 g/t gold over 5.00 m
5.00米矿段中见金品位4.97克/吨
13.1 g/t gold over 1.00 m
1.00米矿段中见金品位13.1克/吨

Bend Vein Bend矿脉

8.43 g/t gold over 0.54 m
0.54米矿段中见金品位8.43
克/吨
*not all intercepts represent true widths
并非所有的矿段都代表真实宽度

2020 DRILL RESULTS / 2020年钻探结果

News Release – December 8, 2020

2020年12月8日的新闻稿

New Mineralizing Trend!

新的矿化趋势!

Blueberry Vein
Blueberry矿脉

22.3 g/t gold over 6.10 m

在6.10米的矿段见金品位22.3克/吨

inc. 67.9 g/t gold over 1.93 m

包括1.93米的矿段中见金品位67.9克/吨

35.8 g/t gold over 2.33 m

在2.33米矿段中见金品位35.8克/吨

inc. 82.1 g/t gold over 1.01 m

包括1.01米矿段中见金品位82.1克/吨

*not all intercepts represent true widths

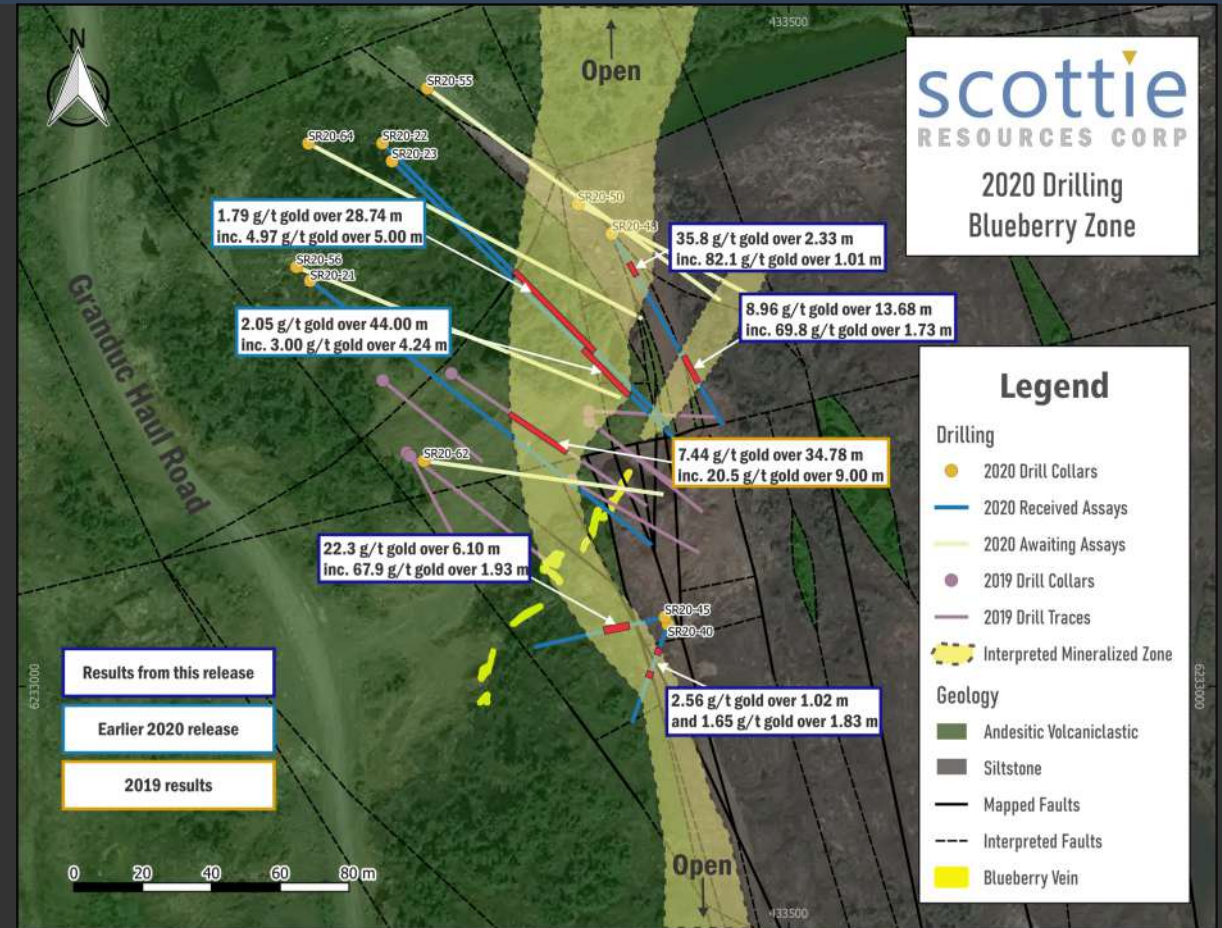
并非所有矿段都代表真实宽度

SR20-45

钻孔SR20-45

SR20-48

钻孔SR20-48



2020 DRILL RESULTS / 2020年钻探结果

16

News Release January 21, 2020
2020年1月21日新闻稿

Domino Zone Highlights Domino区亮点

SR20-29

钻孔SR20-29

2.48 g/t gold over 15.46 m
在**15.46米**矿段中见金品位**2.48克/吨**
inc. 19.9 g/t gold over 0.94 m

包括在0.94米矿段中见金品位19.9克/吨

SR20-37

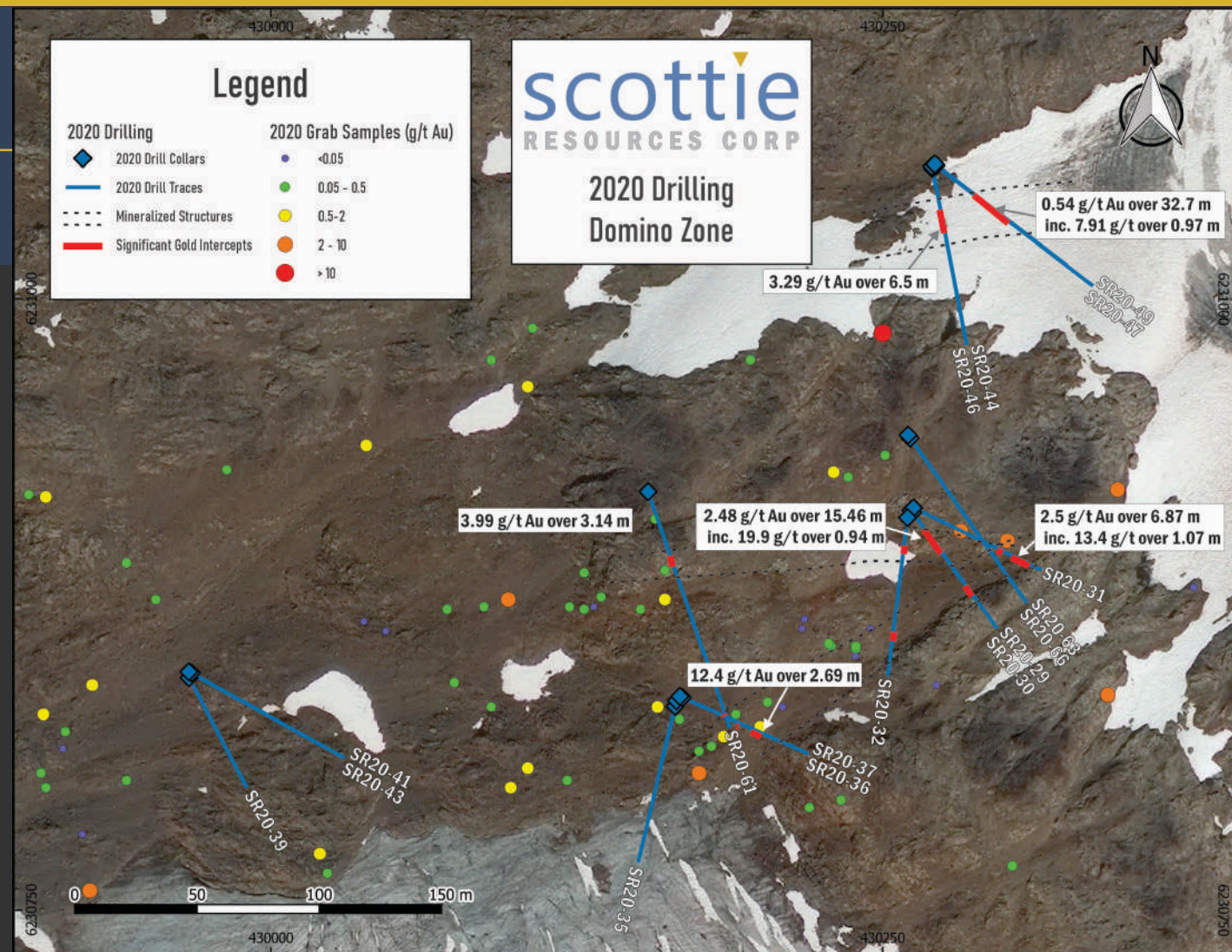
钻孔SR20-37

12.4 g/t gold over 2.69 m
在**2.69米**矿段中见金品位**12.4克/吨**

SR20-31

钻孔SR20-31

13.4 g/t gold over 1.07 m
在**1.07米**矿段中见金品位**13.4克/吨**



*not all intercepts represent true widths

并非所有矿段都代表真实宽度

JANUARY 2021
2021年1月

Issued & Outstanding 发行和流通股数	120,418,898
Fully Diluted 完全稀释后	144,199,352
Market Cap 市值	\$28 million \$2800万

NO DEBT ~ \$3.0 million in cash
没有债务 近\$300万现金

For more information, please contact:

欲了解更多信息，请联系：

Scottie Resources Corp.

T 电话: 1 (604) 646-1877

E 邮箱: info@scottieresources.com

W 网站: www.scottieresources.com

scottie
RESOURCES CORP

TSX.V: SCOT | FSE: SR8 | OST: SCTSF

