



SUMMA
SILVER

Corporate Presentation 公司报告

TSXV:SSVR | OTCQB:SSVRF | Frankfurt: 48X

January 2021 / 2021年1月

Cautionary Note Regarding

Forward-Looking Statements

有关前瞻性陈述的警戒性声明

This presentation includes certain “forward-looking information” and “forward-looking statements” (collectively “forward-looking statements”) within the meaning of applicable Canadian and United States securities legislation including the United States Private Securities Litigation Reform Act of 1995. These forward-looking statements are made as of the date of this presentation. Forward-looking statements are frequently, but not always, identified by words such as “expects”, “anticipates”, “believes”, “plans”, “projects”, “intends”, “estimates”, “envisages”, “potential”, “possible”, “strategy”, “goals”, “objectives”, or variations thereof or stating that certain actions, events or results “may”, “could”, “would”, “might” or “will” be taken, occur or be achieved, or the negative of any of these terms and similar expressions.

Forward-looking statements in this presentation relate to future events or future performance and reflect current estimates, predictions, expectations or beliefs regarding future events and include, but are not limited to, statements with respect to: (i) the Company's focus on advancing its assets towards production; (ii) realizing the value of the Company's projects for the Company's shareholders; (iii) future prices of gold, silver, base metals and certain other commodities; and (iv) the timing and amount of estimated future production. All forward-looking statements are based on the Company's or its consultants' current beliefs as well as various assumptions made by them and information currently available to them. There can be no assurance that such statements will prove to be accurate, and actual results and future events could differ materially from those anticipated in such statements. Forward-looking statements reflect the beliefs, opinions and projections on the date the statements are made and are based upon a number of assumptions and estimates that, while considered reasonable by the respective parties, are inherently subject to significant business, economic, competitive, political and social uncertainties and contingencies. Many factors, both known and unknown, could cause actual results, performance or achievements to be materially different from the results, performance or achievements that are or may be expressed or implied by such forward-looking statements and the parties have made assumptions and estimates based on or related to many of these factors. Such factors include, without limitation: reliability of historical data; fluctuations in the spot and forward price of gold, silver, base metals or certain other commodities; fluctuations in the currency markets (such as the Canadian dollar versus the U.S. dollar); changes in national and local government, legislation, taxation, controls, regulations and political or economic developments; risks and hazards associated with the business of mineral exploration, development and mining (including environmental hazards, industrial accidents, unusual or unexpected formations, pressures, cave-ins and flooding); the presence of laws and regulations that may impose restrictions on mining; employee relations; relationships with and claims by local communities, indigenous populations and other stakeholders; availability and increasing costs associated with mining inputs and labour; the speculative nature of mineral exploration and development; title to properties; and the additional risks described in the Company's disclosure documents filed with the Canadian securities regulatory authorities under the Company's SEDAR profile at www.sedar.com.

Summa Silver cautions that the foregoing list of factors that may affect future results is not exhaustive. When relying on our forward-looking statements to make decisions with respect to Summa Silver, investors and others should carefully consider the foregoing factors and other uncertainties and potential events. Summa Silver does not undertake to update any forward-looking statement, whether written or oral, that may be made from time to time by the Company or on our behalf, except as required by law.

Data disclosed in this presentation relating to sampling and drilling results is historical in nature. Neither the Company nor a qualified person has yet verified this data and therefore investors should not place undue reliance on such data. The Company's future exploration work will include verification of the data. The potential quantity and grade of any exploration target in this presentation is conceptual in nature, there has been insufficient exploration to define a mineral resource and it is uncertain if further exploration will result in the exploration target being delineated as a mineral resource. Mineralization hosted on adjacent and/or nearby and/or geologically similar properties is not necessarily indicative of mineralization hosted on the Company's property. The technical information disclosed presentation has been reviewed and approved by Galen McNamara, P. Geo., the CEO of the Company and a qualified person as defined by National Instrument 43-101. Mr. McNamara has not verified the data disclosed, including sampling, analytical and test data underlying the

information or opinions contained in the written disclosure.

Summa Silver Overview 公司概况



Progressing the Hughes Property in Nevada & Mogollon Property in New Mexico 推进内华达州的Hughes项目区和新墨西哥州的Mogollon项目区



High grade precious metal districts are re-emerging as attractive discovery and development targets 高品位的贵金属产区东山再起，出现诱人的发现区和开发靶区



Prolific high-grade past producing silver-gold districts with large-scale exploration upside 多产的高品位银-金历史产区，具有大规模勘探的潜力



Early mover opportunity in areas that are seeing renewed exploration interest 在重获勘探兴趣的区域拥有先人一步的机会



United States focused silver and gold development company 专注于美国的白银和黄金开发公司



High-grade results in Phase 1 drilling with multiple zones over 1,000g/t Ag equivalent 在一期钻探活动中见高品位矿段，有多个区域的矿石品位都超过了白银当量1000克/吨。

People 人才

Galen McNamara

CEO & DIRECTOR
首席执行官兼董事

- Entrepreneur and Geologist with extensive discovery and capital markets experience over nearly 15 years 拥有近15年的矿产发现和资本市场经验的地质学家和企业家
- Co-winner 2018 PDAC Bill Dennis "Prospector of the Year" Award and 2016 Mines and Money Exploration Award 联合获得2018年加拿大勘探与开发者协会Bill Dennis“年度勘探者”奖和2016年矿业与融资勘探奖
- Former Senior Project Manager - Exploration & Development at NexGen Energy, managed all field based drilling and exploration activities, instrumental role in the discovery and delineation of multiple high grade uranium zones / 曾担任NexGen Energy的勘探与开发高级项目经理，负责所有的实地勘探和勘探活动，在发现和划定多个高品位的铀矿化区域方面发挥了举足轻重的作用
- Bachelor's and Master's Degrees in Geology from Laurentian University / 劳伦森大学地质学学士和硕士学位

Garrett Ainsworth

TECHNICAL ADVISOR
技术顾问

- President, CEO and Director of District Metals Corp (DMX-TSXV) / District Metals Corp (DMX-TSXV)的总裁、首席执行官兼董事
- Highly accomplished Geologist and mining executive with more than \$300M in financing completed throughout his career 非常有成就的地质学家和矿业高管，职业生涯中共完成了\$3亿多的融资
- Key role in two large discoveries for which he was awarded the 2018 PDAC Bill Dennis "Prospector of the Year" Award, 2016 Mines and Money Exploration Award, and 2013 AMEBC Colin Spence Award 因为在两个大的发现区中发挥了关键作用荣获2018年加拿大勘探与开发者协会Bill Dennis“年度勘探者”奖和2016年矿业与融资勘探奖，2013年卑诗省矿产勘探协会Colin Spence奖
- Bachelor of Science in Geology with first class honours from Birkbeck, University of London 伦敦大学伯克贝克学院地质学一级荣誉学士学位

Martin Bajic

CFO & DIRECTOR
首席财务官兼董事

- Chartered Professional Accountant with extensive CFO experience at multiple Canadian listed companies 特许专业会计师，拥有在多家加拿大上市公司担任首席财务官的丰富经验
- Wide ranging officer and director expertise 具有广泛的管理和董事专业知识
- Public listing stewardship proficiency 精通上市公司管理
- Bachelor of Arts and a Diploma in Accounting from the University of British Columbia 卑诗大学文学学士学位及会计证书

Christopher Leslie

SENIOR GEOLOGIST
高级地质学家

- Economic geologist with over 13 years of experience in mineral exploration focused on the discovery and advancement of gold and silver deposits. 在矿产勘探领域有13年经验的经济地质学家，专注于发现和推进黄金和白银矿床。
- Co-discoverer of the Blackwater Gold Deposit where he supervised the initial exploration programs that lead to the most recent mineral reserve estimate of 8.2M ounces of gold. / Blackwater金矿床的共同发现者，监督了该矿床最初的勘探项目，该矿床最新的矿产储量预计为820万盎司金。
- Former VP Exploration of Tower Resources Ltd where he assembled and helped advance a portfolio of gold projects throughout British Columbia. 曾任Tower Resources Ltd的勘探副总裁，组建并帮助推进了整个卑诗省的黄金项目组合。
- Currently finishing his Ph.D. at the Centre for Ore Deposit and Earth Sciences (CODES) at the University of Tasmania 目前在塔斯马尼亚大学矿藏和地球科学中心完成博士学位。

People 人才

Michael Konnert

DIRECTOR 董事

- Founder, CEO and Director of Vizsla Resources Corp. (VZLA-TSXV) / Vizsla Resources Corp. (VZLA-TSXV)的创始人、首席执行官兼董事
- Former CEO and co-founder of Cobalt One Energy – Acquired by Blackstone Minerals (ASX-BSX)被Blackstone Minerals (ASX-BSX)收购的Cobalt One Energy的前首席执行官兼联合创始人
- Partner in Inventa Capital with nearly 10 years of experience in mining and capital markets / Inventa Capital的合伙人，拥有近10年的矿业和资本市场经验
- Bachelor of Commerce from Royal Roads University 皇家路大学的商学学士

Thomas O'Neill

DIRECTOR 董事

- President of Thomas O'Neill and Associates Inc, a national leader in insurance planning, group employee benefits and retirement planning 现任Thomas O'Neill and Associates Inc的总裁，该公司是一家保险规划、团体员工福利和退休规划的国内领先者。
- Widely recognized expert in the life insurance and financial planning industry 在生命保险和财务规划行业广为人知的专家
- His leadership, vision, and passion for unparalleled customer relations has earned him the respect of both his peers and clientele 他的领导力、远见和对无与伦比的客户关系的热情使他赢得了同行和客户的尊重。
- Founder and proprietor of Grand Cru Imports Inc, an importer of fine French and Italian wines 精酿法国和意大利葡萄酒的进口商 - Grand Cru Imports Inc的创始人和所有者。

Brian Goss

DIRECTOR 董事

- Founder and President of Rangefront Geological, a geological consulting company and project generator that caters to a large spectrum of clientele in the mining and minerals exploration industry 服务于采矿和矿产勘探行业大量客户的地质咨询和项目生成公司Rangefront Geological的创始人兼总裁
- Director at Ridgestone Resources (RMI-TSXV), Director and former President of Lithium Corp (LTUM-OTCQB) / Ridgestone Resources (RMI-TSXV)董事、Lithium Corp (LTUM-OTCQB)的董事兼前总裁
- Extensive mineral exploration and project management experience in the Western United States over fifteen years 在美国西部有15年以上丰富的矿产勘探和项目管理经验
- Bachelor of Science Degree with a major in Geology from Wayne State University in Michigan 密歇根州韦恩州立大学地质学学士学位

Capital Structure 股权结构

Recent Share Price 最近股价* **\$1.17**

Common Shares Issued **51,358,804**
已发行普通股

Incentive Stock Options **2,577,502**
激励性股票期权
(\$0.25 – \$0.92)

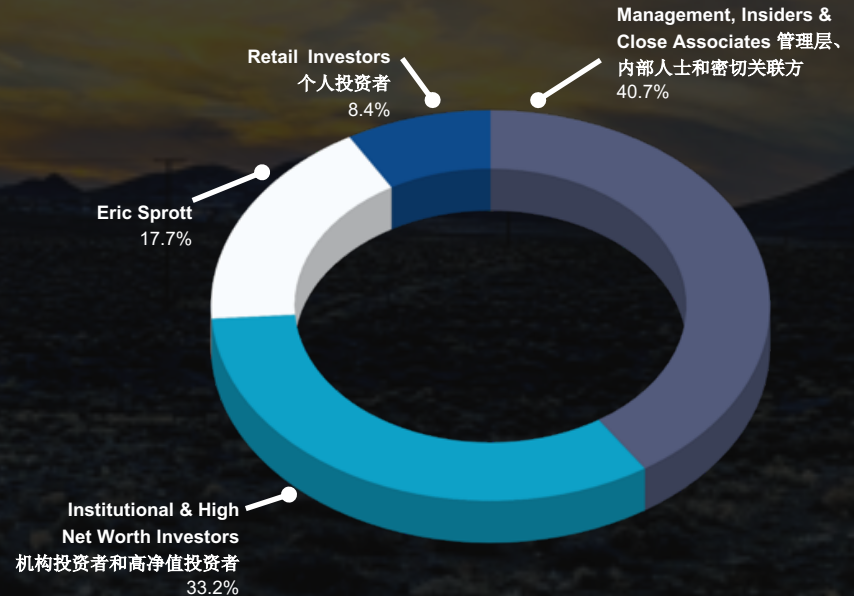
Warrants 认股权证 **5,592,650**
(\$0.25 – \$1.75)

Cash 现金 **\$5,000,000**

Debt 债务 **Nil** 无

Total Fully Diluted 完全摊薄后 **59,528,954**
股数

* As of January 8, 2021 截止2021年1月8日





SUMMA
SILVER

Hughes Property / Hughes项目区

NEVADA, USA 美国内华达州

Nevada: A World-Class Mining Jurisdiction

内华达州：一个世界级的矿业辖区

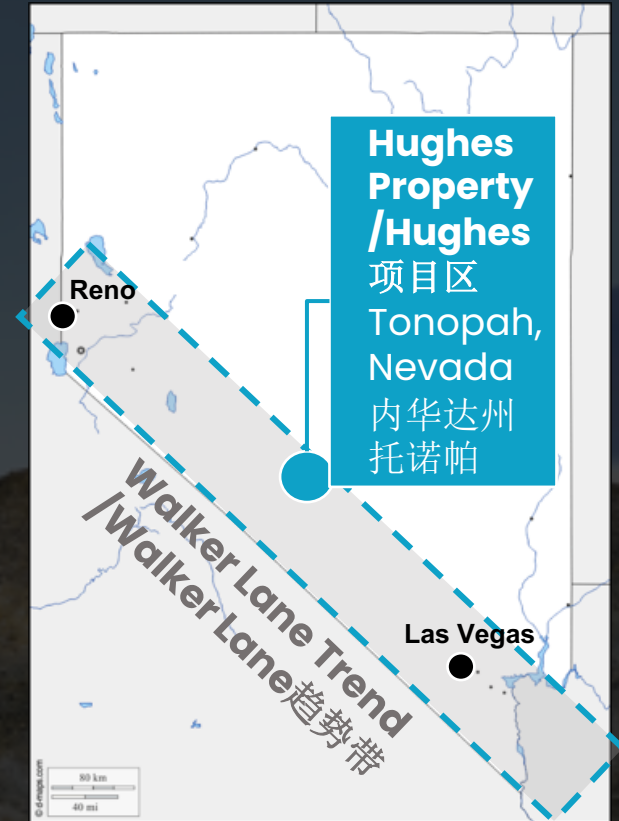
Nevada 内华达州

- Top-3 ranked Global Mining Investment Jurisdiction 全球排名前三的矿业投资辖区
- 5.6M oz of gold production annually 年产黄金560万盎司
- Originally known as the Silver State 最初被称为产银之州

Walker Lane Trend / Walker Lane趋势带

- Endowment of at least 80 M oz of gold and 700 M oz of silver 至少8000万盎司黄金和7亿盎司白银的资源禀赋

Source: Nevada Bureau of Mines 来源：内华达州矿业局



Tonopah: A Great American Silver Camp

托诺帕：一个伟大的美国白银营地

- Discovered in 1900 by Jim Butler while chasing after his run-away donkeys – or so the story goes / 1900年，Jim Butler在追赶他逃走的驴子时意外发现，故事就从这儿开始
- Butler likely learned of the veins from the Shoshone People / Butler可能是从肖肖尼人那里知道这些矿脉的
- The first assayer decided the rocks were worthless and threw them away, but the second assayer found something different 当年的第一名试金者认为这些岩石没有价值，随即扔掉了。但是第二名试金者发现了一些不同的东西
- The veins were averaging 3,500 g/t Ag 矿脉中的白银平均品位高达3500克/吨
- Extensive production in the area between 1910 and 1930 在1910年到1930年之间在该地区进行了大量的生产
- Total production of 175M oz of Ag and 1.86M oz of Au from 8.8M tons of ore 一共从880万吨矿石中生产了1.75亿盎司白银和186万盎司黄金
- Average grades of 679 g/t Ag* and 7.3 g/t Au* or 1,263 g/t AgEq** 平均白银品位679克/吨、平均金品位7.3克/吨或者平均白银当量品位1263克/吨**
- Owned by Howard Hughes' Summa Corporation in the 1970s 上世纪70年代由Howard Hughes的Summa Corporation拥有



Mizpah Hotel, 1920's
米斯巴酒店，上世纪20年代



Mizpah Hotel, 2020 / 米斯巴酒店，2020年
#1 rated haunted hotel in America
美国评价第一的让人心神不宁的酒店

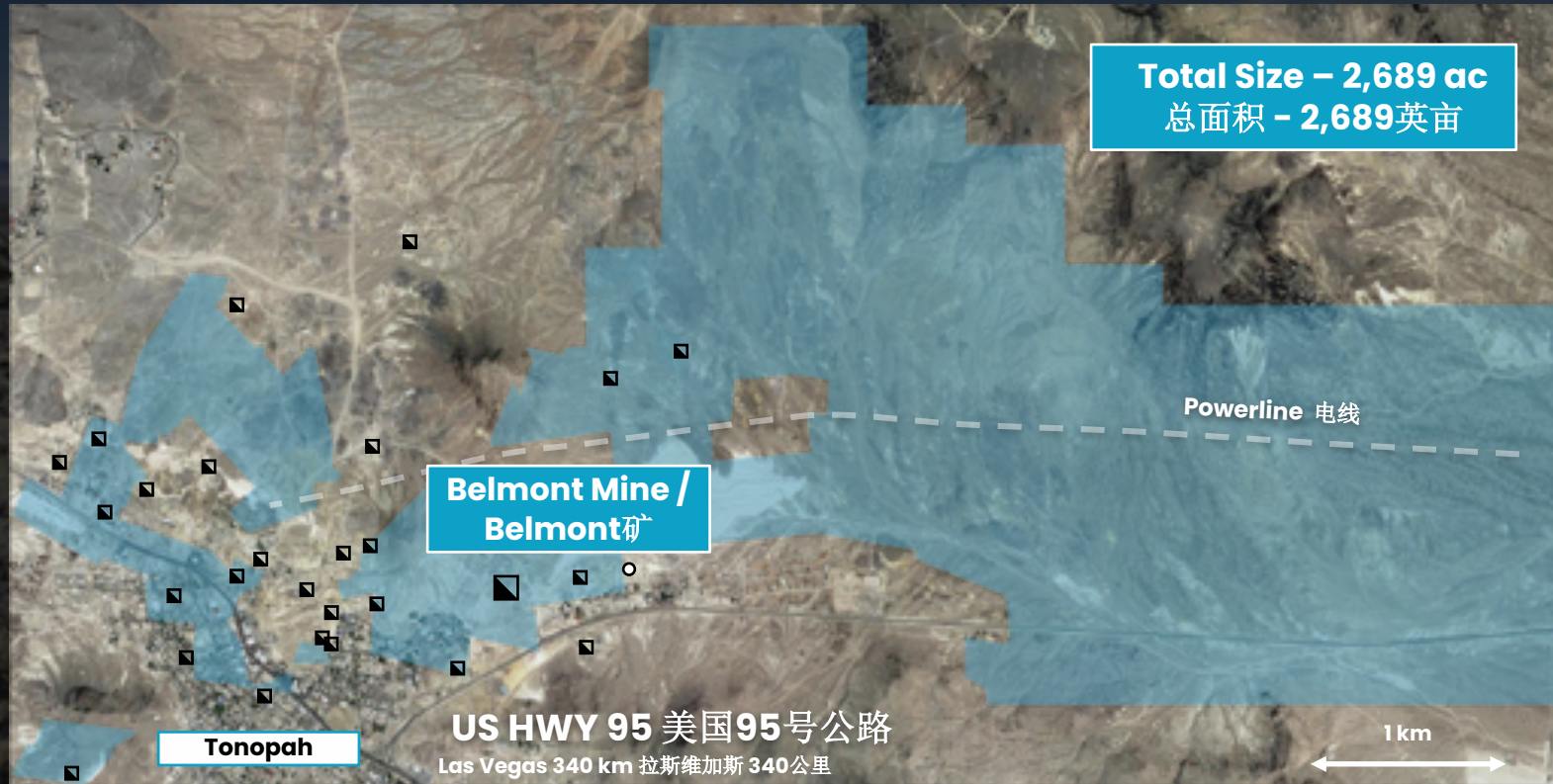
*Calculated using 80:1 Au/Ag 使用80比1的金银比计算

Sources 来源: USGS 2018, Sander 1989, Carpenter et al. 1953

The Hughes Property / Hughes项目区

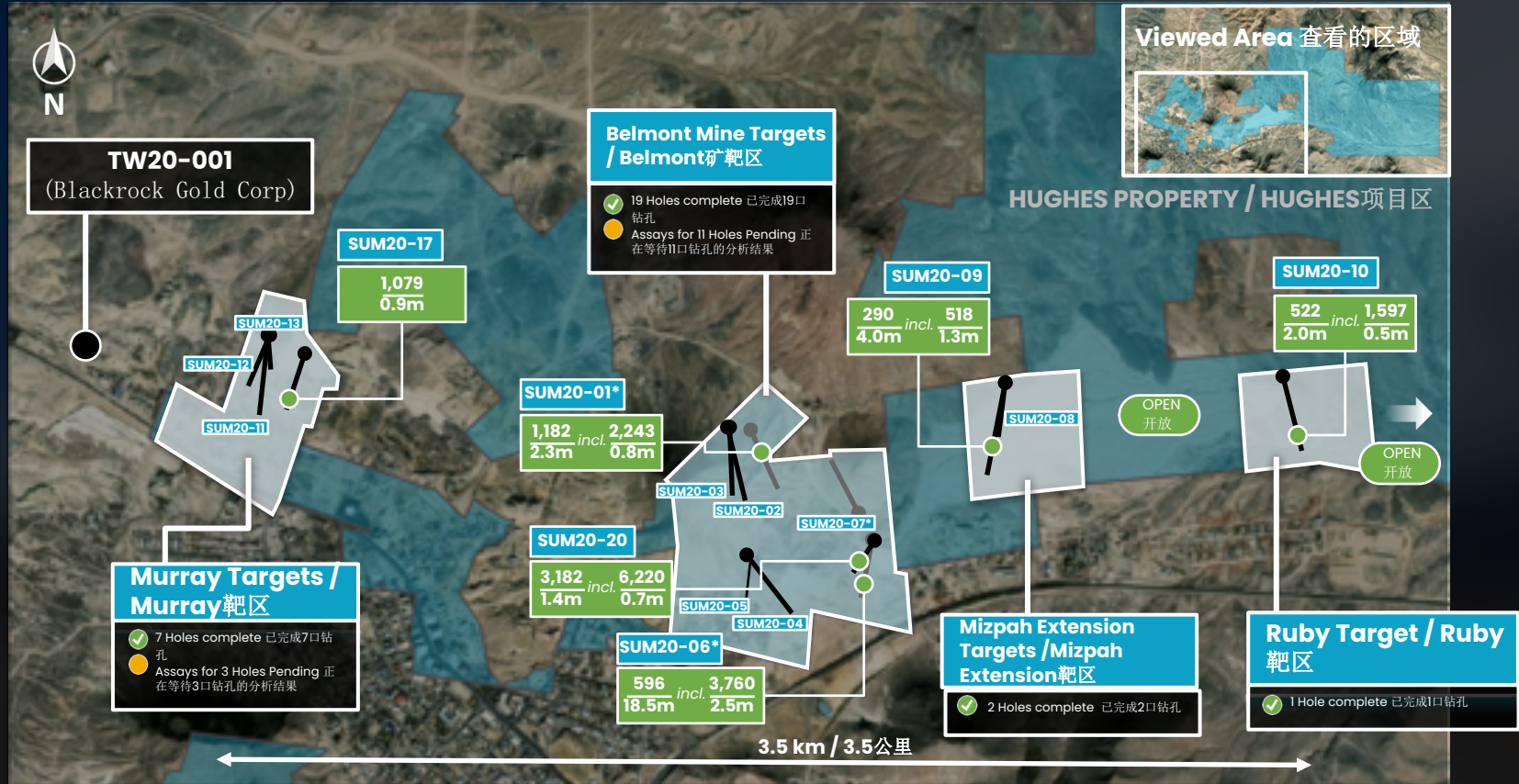
- One of America's great silver producers of the time 美国当时最伟大的白银生产矿之一
- The Belmont Mine was one of the top producing mines of the Tonopah district / Belmont矿是当年托诺帕产区内产量最高的矿山之一
- 2,689 ac – 5.5 km strike length / 2689英亩—走向长度5.5公里
- Highway and powerlines on the property 项目区内有公路和电力线路等基础设施
- No assessment of remaining potential, until now 直到现在，尚未评估剩余地区的潜力
- Highlights from Phase I drilling include 一期钻探亮点包括:
 - 3,760 g/t AgEq over 2.5 m in SUM20-06
在钻孔SUM20-06见白银当量3,760克/吨的2.5米矿段
 - 6,220 g/t AgEq over 0.7 m in SUM20-20
在钻孔SUM20-20见白银当量6,220克/吨的0.7米矿段
- Multiple zones >1,000 g/t Ag equivalent intersected over 3.5 km trend, multiple holes with assays pending 在3.5千米的趋势带上见到白银当量品位超过1000克/吨的多个区域，正在等待多个钻孔的分析结果。

Land Position 土地位置



*Previously released
AgEq based on 100(Ag):1(Au) 之前发
布的白银当量品位基于银金比100:1.
All information is approximate
所有信息均是近似值。

Hughes Property Drilling / Hughes项目区钻探



Longsection of the Rescue #2 Vein / Rescue 2号矿脉的纵截面图

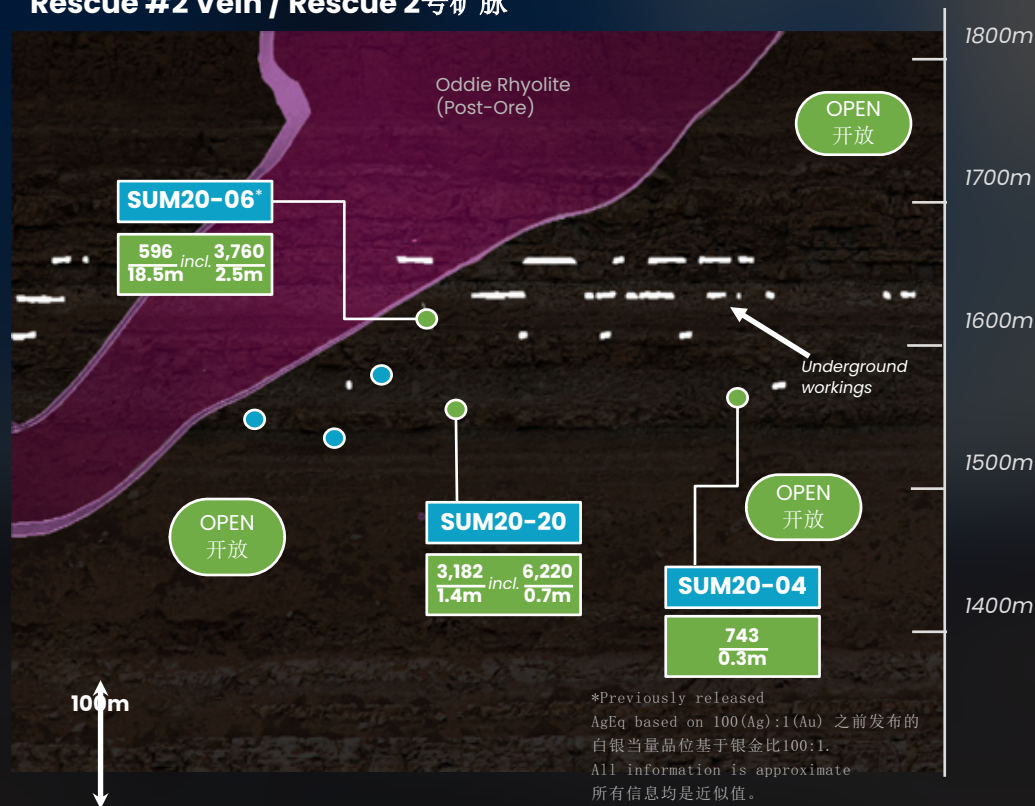
Rescue #2 Vein / Rescue 2号矿脉

LEGEND 图例

- SUM20-XX** Drill Hole Pierce Point 钻孔穿刺点
- 3,182** g/t AgEq*
- 1.4m** Intercept Length 矿段长度
- Assays Pending** 等待岩芯分析结果

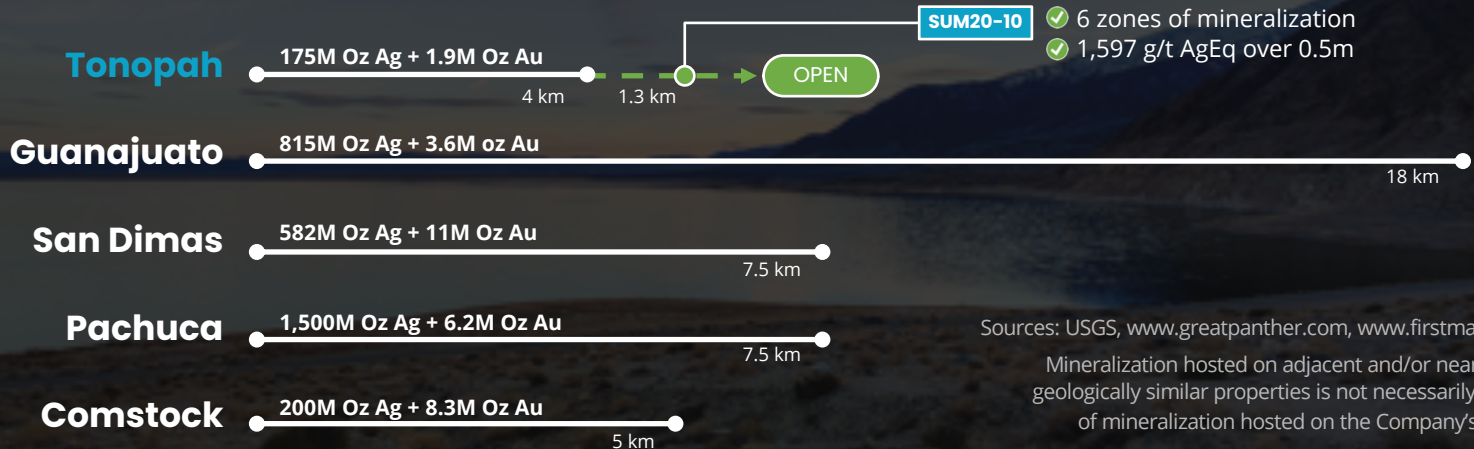


SUM20-20 @ 397.4m
6,220 g/t AgEq over 0.7 m



District Comparison

District	Strike Length	Million ounces Ag	Million ounces Au	Head Grade
Tonopah, Nevada	4 km	175	1.9	1,263 g/t Ag Eq
Guanajuato, Mexico	18 km	>1,000	4	297 g/t Ag Eq (2019)
San Dimas, Mexico	7.5 km	582	11	594 g/t Ag Eq (2018)
Pachuca, Mexico	7.5 km	1,500	6.2	Unknown
Comstock, Nevada	5 km	200	8.3	1,534 g/t Ag Eq

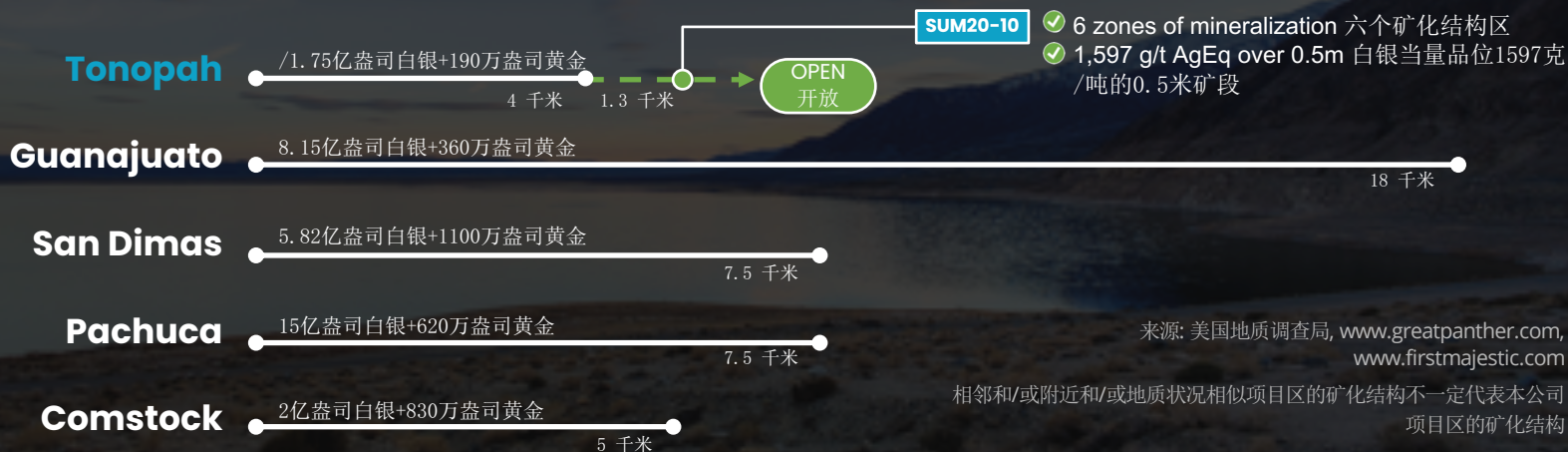


Sources: USGS, www.greatpanther.com, www.firstmajestic.com

Mineralization hosted on adjacent and/or nearby and/or geologically similar properties is not necessarily indicative of mineralization hosted on the Company's property.

District 产区对比

产区	走向长度	百万盎司白银	百万盎司黄金	入选品位
内华达州托诺帕	4公里	175	1.9	白银当量品位1263克/吨
墨西哥瓜纳华托	18公里	>1,000	4	白银当量品位297克/吨(2019)
墨西哥圣迪马斯	7.5公里	582	11	白银当量品位594克/吨(2018)
墨西哥帕丘卡	7.5公里	1,500	6.2	未知
内华达州康斯托克	5公里	200	8.3	白银当量品位1534克/吨





SUMMA
SILVER

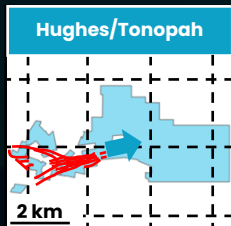
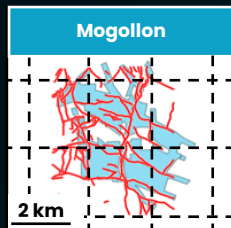
Mogollon Property / Mogollon项目区

NEW MEXICO, USA 美国新墨西哥州

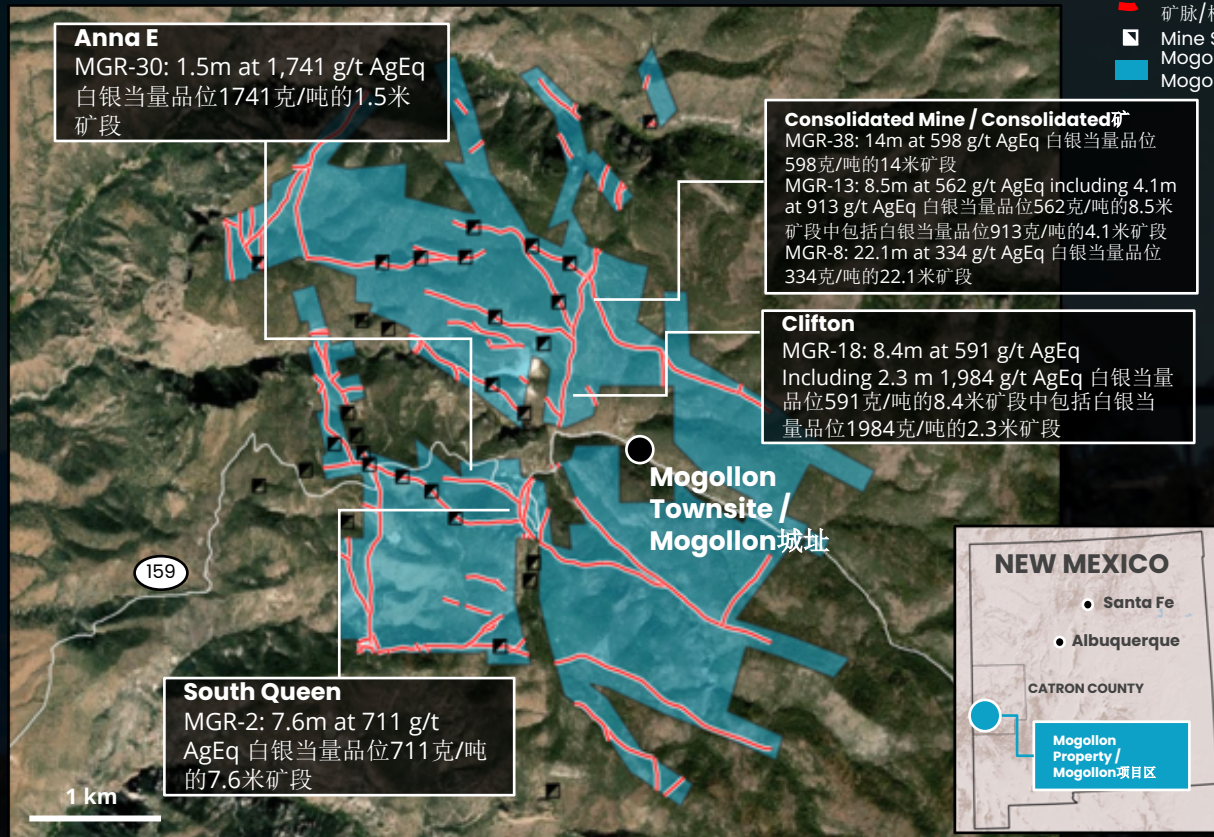
Mogollon Property / Mogollon项目区

LEGEND

- Inferred Vein/Structure推断矿脉/构造
- Mine Shaft 矿山竖井
- Mogollon Property / Mogollon项目区



SilverCrest Metals Inc
Market Cap: \$1.6B
市值: \$16亿



Consolidated Mine – Longsection

Consolidated矿—纵截面图

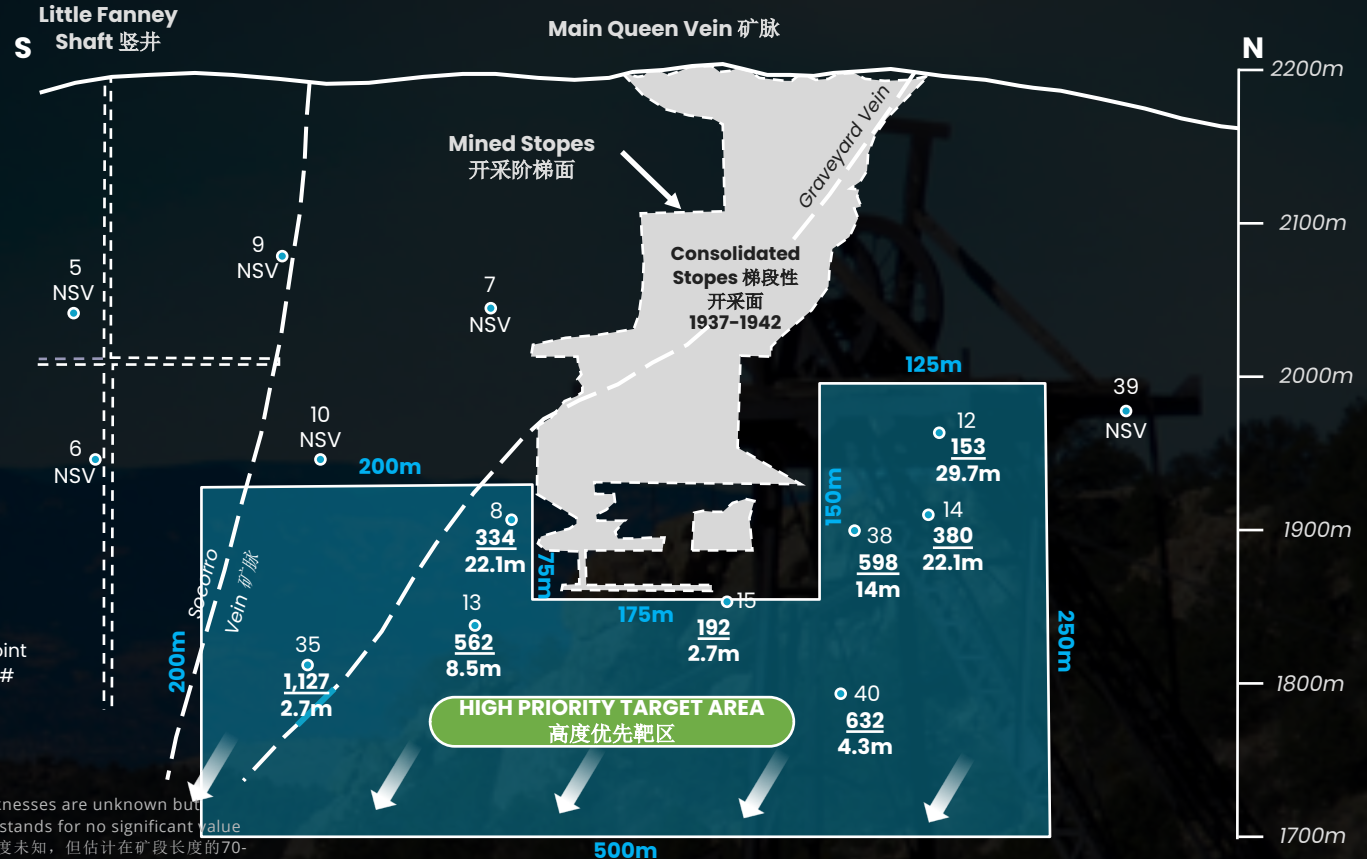


**Consolidated Mine
At Surface / Consolidated
矿地表**

LEGEND

- 图例
- 40 Drill Hole Pierce Point 钻孔穿刺点 - MGR-#
 - 650 g/t AgEq*
 - 3.05m Intercept Length 矿段长度

*AgEq calculated based on 85:1 Ag/Au, true thicknesses are unknown but estimated to be 70-80% of intercept length, NSV stands for no significant value
 白银当量的计算采用85:1的白银/黄金比率，真实宽度未知，但估计在矿段长度的70-80%之间，NSV代表没有重要的数值



Work Programs 工作计划

Winter / Spring 2021 / 2021年冬季/春季

- Receive, compile and release remaining assay results for Hughes 接收、汇编和发布有关 Hughes的剩余岩芯分析结果
- Receive drilling permits for Mogollon 收到Mogollon的钻探许可证
- Plan significant drill programs for both Hughes and Mogollon concentrating on resource definition 计划在Hughes和Mogollon都进行大规模的钻探活动，专注于资源量确定。
- Drill program at Hughes stepping out around known high-grade on all four target areas over 3.5 km 在Hughes的钻探活动在3.5公里长度范围内探边四个靶区的已知高品位区

Summer / Fall 2021 / 2021年夏季/秋季

- Drill program at Mogollon targeting historic high-grade mineralization around the Consolidated Mine / 在Mogollon的钻探活动针对Consolidated矿周围的历史高品位矿化结构。
- Continued drilling at Hughes 继续在Hughes钻探
- On-going data review and targeting at both Hughes and Mogollon 持续在Hughes和Mogollon进行数据评估和确定靶区。

The Opportunity 投资机会

- ✓ Famous high-grade past producers 著名的高品位历史产区
- ✓ No modern assessment of remaining potential 未对剩余的潜力进行现代勘探和钻探评估
- ✓ Excellent large scale discovery potential 优秀的大规模发现区的潜力
- ✓ Early success in first drill program 第一批钻探活动**获得初步成功**
- ✓ Historic high grade results ready for follow up 准备对历史高品位的钻探结果进行跟进
- ✓ Professional team with track record of discovery success 拥有资源发现成功履历的专业团队
- ✓ Excellent access and infrastructure 良好的道路和基础设施
- ✓ Stable and established mining jurisdictions 稳定和成熟的矿业辖区



SUMMA
SILVER

For more information, please contact
欲了解更多信息，请联系：



Galen McNamara

CEO & Director
首席执行官兼董事

604-788-3677
info@summasilver.com

1030 West Georgia St, Suite 918
Vancouver, BC, V6E 2Y3

TSXV:SSVR
OTCQB:SSVRF
Frankfurt: 48X



www.summasilver.com



@SummaSilver