



# Xtra-Gold Resources Corp.




**TSX : XTG / OTCQB : XTGRF**

Pioneering the Discovery of a New Gold Belt in Ghana, West Africa  
在西非加纳引领新的黄金带发现之路

CORPORATE PRESENTATION

公司报告

Q1 2021 / 2021年第一季度



## CAUTIONARY STATEMENT: FORWARD-LOOKING INFORMATION / TECHNICAL DISCLOSURE

### 警戒性声明：前瞻性信息 / 技术披露信息

Statements contained in this Presentation that are not based on historical fact are “forward-looking statements”. Forward-looking statements may be identified by the use of forward-looking terminology such as “may”, “expect”, “believe”, “estimate”, “anticipate”, “intend”, “plan”, “continue” or similar terms variations of those terms or the negative of those terms. These forward-looking statements are based on information currently available to us. There are a number of risks, uncertainties and other factors that could cause our actual results, performance, prospects or opportunities to differ materially from those expressed in or implied by these forward-looking statements.

Each person, company or company representative who receives a copy of this Presentation (“Recipient”) should not attribute undue certainty to any forward-looking statement. Except as otherwise may be required by federal securities laws, we undertake no obligation to publicly update or revise any forward-looking statement, whether as a result of new information, future events, changes circumstances, or any other reason, after the date of this Presentation.

This Presentation has not been reviewed, approved or disapproved, nor has the accuracy or adequacy of the information set forth herein been passed upon by the Securities and Exchange Commission or any state securities administrator or any United States, Canadian securities regulatory authorities or any other country, federal or state regulatory body. Any representation to the contrary is a criminal offense.

This Presentation is being made on a confidential basis for use solely in connection with a potential investment. The disclosure of any of the data contained herein or supplied in connection herewith or the use thereof for any other purpose, except with our written consent, is strictly prohibited. This Presentation is being made on a confidential basis for use solely in connection with a potential investment. The disclosure of any of the data contained herein or supplied in connection herewith or the use thereof for any other purpose, except with our written consent, is strictly prohibited. This Presentation may not be reproduced, in whole or in part and it is accepted by a Recipient with the understanding that it will be returned at our request.

Any Recipient of this Presentation may, if he or she so desires, make inquiries of appropriate members of our Management with respect to our business or any other matters set forth herein and may obtain any additional information which such person deems to be necessary in order to verify the accuracy of the information contained in this Presentation (to the extent that we possess such information or can acquire it without unreasonable effort or expense). In connection with such inquiry, any documents which any Recipient wishes to review will be made available for inspection and/or copying. Prior to review of the documents or information, each Recipient may be required to sign a confidentiality agreement restricting the subsequent use of the information. Any such inquiries or requests for additional information or documents should be made in writing to our President and CEO, James Longshore.

Recipients are not to construe the contents of this Presentation as legal or tax advice. Each Recipient should consult his own counsel, accountant and other advisors as to legal, tax and related matters relating to any relationship with Xtra-Gold.

No person has been authorized to give any information or to make any representations other than those contained in this Presentation in connection with a potential investment in our Company and, if given or made, such information or representations must not be relied upon as having been authorized by us. This Presentation does not constitute an offer to sell or the solicitation of any offer to buy any security of Xtra-Gold Resources Corp. (“Xtra-Gold”), nor does it constitute an offer to sell or a solicitation of any offer to buy such securities by anyone in any jurisdiction. Any offer or sale of securities of Xtra-Gold will only be made by a separate offering document and definitive agreement which this Presentation does not form a part thereof.

This Presentation contains summaries or significant documents. Although such summaries are believed to be fair and accurate, they do not purport to be a complete description of every term and condition and reference is hereby made to the actual documents for complete information relating to the rights and obligations of the parties thereto. The summaries are qualified in their entirety by this reference.

In making a decision to do business with Xtra-Gold, any Recipient must rely on their own examination and due diligence investigation of Xtra-Gold, including the merits and risks involved. We cannot guarantee you that the abbreviated nature of this Presentation will not omit to state a material fact which someone may believe to be an important factor about Xtra-Gold. As a result, any Recipient is required to undertake his own due diligence of Xtra-Gold, our current and proposed business and operations, our Management and our financial condition to verify the accuracy and completeness of the information we are providing in this Presentation.

The lode gold exploration technical information in this presentation was prepared by Yves P. Clement, P.Geo., Vice President, Exploration for Xtra-Gold Resources Corp.; a non-independent Qualified Person as defined by National Instrument 43-101. The technical information contained in this presentation has been compiled from NI 43-101 compliant technical reports and news releases with specific underlying Qualified Persons as set out in the releases and reports, and publicly available industry information. Please refer to SEDAR for complete information ([www.sedar.com](http://www.sedar.com)). This presentation reports on the technical information of the company’s exploration projects up to September 30, 2020, and provides a guide to the company’s potential future activities and use of funds. There can be no assurances that the company objectives will be achieved. Industry information has been compiled from publicly available sources and may not be complete, up to date or reliable. Readers are cautioned that any information regarding adjacent or geologically similar mineral properties are not indicative of mineral deposits on the company’s properties.

Mineral resources are not mineral reserves and by definition do not demonstrate economic viability. This mineral resource estimate includes inferred mineral resources that are normally considered too speculative geologically to have economic considerations applied to them that would enable them to be categorized as mineral reserves. There is also no certainty that these inferred mineral resources will be converted to the measured and indicated resource categories through further drilling, or into mineral reserves, once economic considerations are applied. There can be no assurance that any of the assumptions in the resource estimates will be supported by a Pre-feasibility or Feasibility Study or that any forward-looking event will come to pass.

## INVESTMENT HIGHLIGHTS

### 投资亮点

1

#### XTRA-GOLD'S MAIDEN DISCOVERY 公司的首份资源量报告

- Maiden Mineral Resource Estimate (Base Case): 278,000 ounces of gold in Indicated category (3.38 million tonnes grading 2.56 g/t gold) & an additional 147,000 ounces of gold in Inferred category (2.35 million tonnes grading 1.94 g/t gold) 首份矿产资源量（基准情况）：指示资源量27.8万盎司黄金（金品位2.56克/吨的338万吨矿石），推断资源量14.7万盎司黄金（金品位1.94克/吨的235万吨矿石）
- 5 Mining Leases totaling 55,905 acres (226 km<sup>2</sup>) in a significant but unexplored district in one of the world's most prolific gold regions 五个矿权租赁区，总计55,905英亩（226平方公里），处于全球最多产的黄金区之一中尚未勘探的资源区。

2

#### STRONG CAPITAL POSITION 资金充足

- USD 7.9M+ in cash and liquid assets with zero debt 手中现金和流动资产共790多万美元，无债务
- USD 5M+ sold in gold bullion from alluvial (placer) gold mining operations in 2020 从冲积（冲积矿）采金运营中2020年出售金条获得500多万美元。
- Recurring annual revenues of USD 4-5M generated through Community Mining Project 通过社区采矿项目每年获得经常性收入400-500万美元。

3

#### EXPLORATION & DRILL PROGRAMS FUNDED 有资金支持的勘探和钻探活动

- USD 2.5M+ spent on equipment at the Company's mine camp, including 2 Diamond Drill rigs 在公司的采矿营地，设备花费250多万美元，包括两台钻机
- USD 1M spent on VTEM Survey & IP Surveys to assist in identifying new lode gold targets 为了协助确定黄金靶区，花费100万美元进行电磁勘测和IP勘测
- USD 2M+ spent on reconnaissance exploration work (soil sampling, trenching, etc.) 花费200万美元进行踏勘工作（土壤采样、槽探等）
  - 6 drill-ready targets have been identified, including step-out targets for the expansion of the Maiden Resource and the new Cobra Creek Gold Project 已经确定准备钻探的六个靶区，包括为了提升首份资源量的探边靶区，以及新的Cobra Creek黄金项目。

4

#### SHAREHOLDER & MANAGEMENT ALIGNMENT 股东和管理层团结一致

- Key members of management team have all been in place since IPO in 2010 自2010年首次公开上市以来，管理团队的主要成员就一直在任
- Management, Friends & Family own 50%+ of outstanding shares 管理层、朋友、家人持有发行在外股票的50%以上。
- Low outstanding share count 发行在外股票数量少
- Company has focused on retaining shareholder value; 公司一直专注于保护股东价值
  - Use proceeds from Community Mining Project to fund exploration costs 使用从社区采矿项目获得的收益为勘探提供资金。
  - Over 3.5M shares repurchased and retired through NCIB effected in 2014 通过2014年实施的NCIB回购并注销了350多万股。

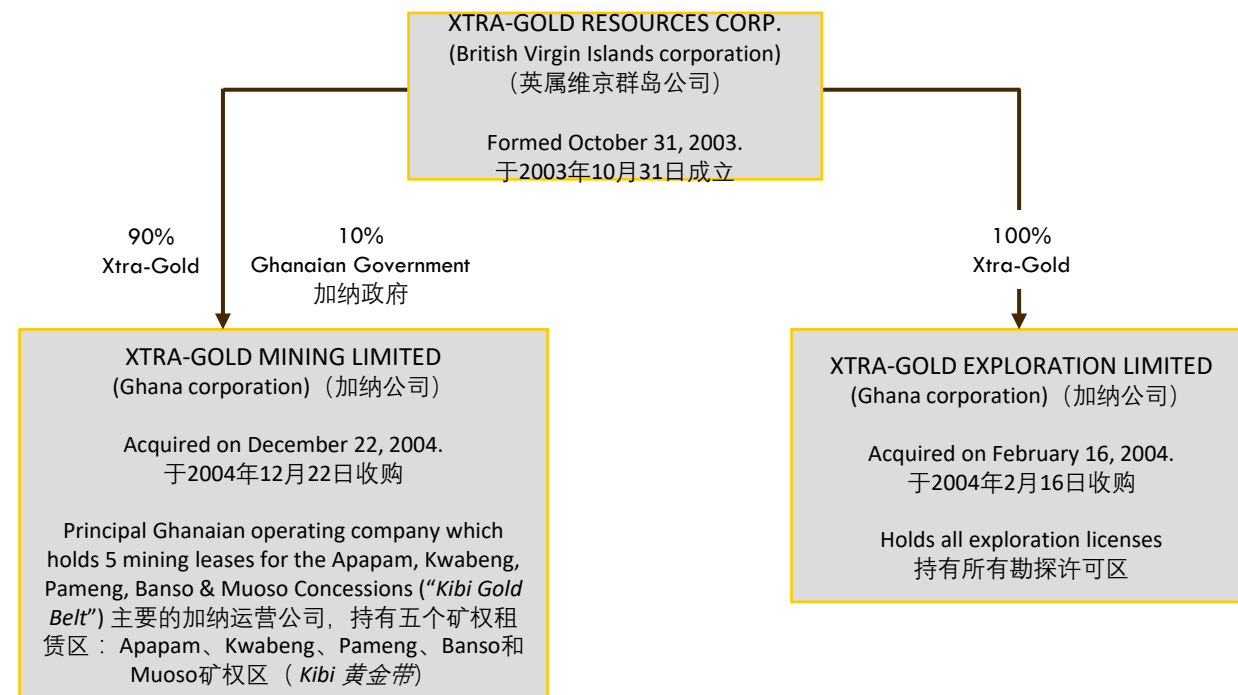
## CAPITAL & CORPORATE STRUCTURE 股权结构

TSX : XTG  
OTCQB : XTGRF

Share Price (USD as of Jan. 4, 2021) 股价 (截止 2021年1月4日)	1.10
Shares Outstanding 发行在外股数	46,873,617
Options 期权	2,328,500
Fully Diluted 完全摊薄后股数	49,202,117
Market Cap (USD) 市值 (美元)	51,560,979
Cash (USD as of Sept 30, 2020) 现金 (美元, 截止2020年9月30日)	5,802,208
Debt 债务	Nil 无

SHAREHOLDER 股东	SHARES (M) 股数	%
Founders & Management 创始人和管理层	~12M 约1200万	~25.6
Long Term Investors 长期投资者	~16M 约1600万	~34.2
	TOTAL 总计	~59.8

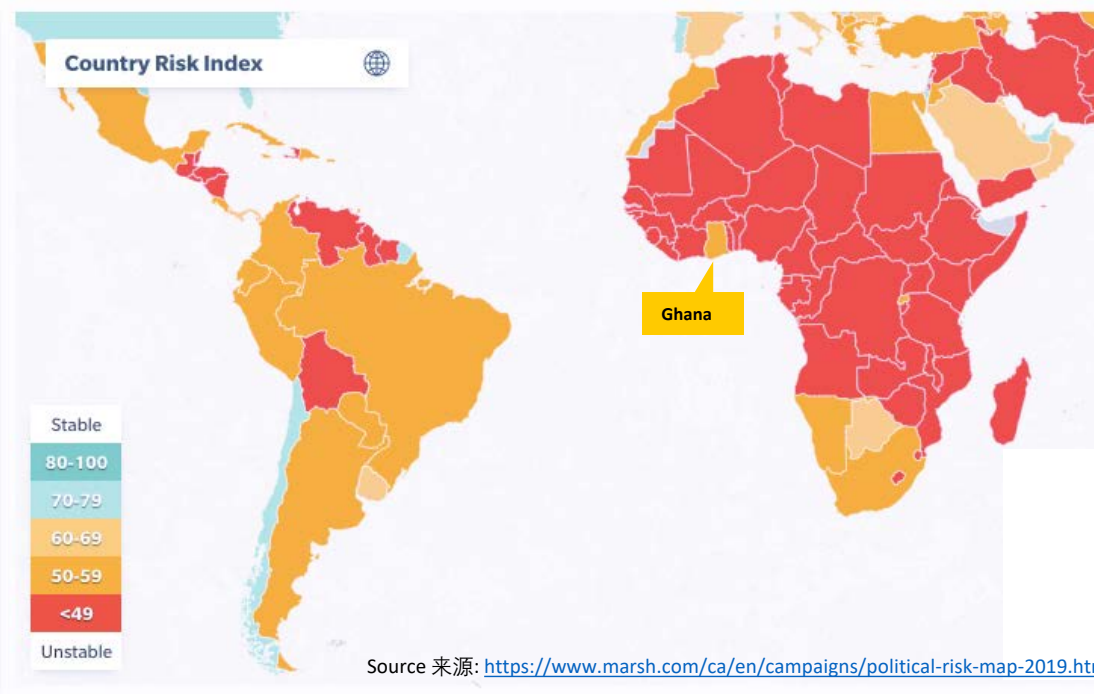
- IPO on the Toronto Stock Exchange: XTG on Nov 23, 2010
- 2010年11月23日在多交所首次公开上市，交易代码为XTG
- Raised CAD 10M @ \$1.35 per share 以每股\$1.35募集1000万加元



## GHANA : A safe and mining-friendly jurisdiction 加纳：一个安全且矿业友好辖区

Ghana is rated by independent agencies as one of the most politically stable countries in Africa. Its risk profile compares favorably with other well-regarded global mining jurisdictions.  
独立机构评估加纳是非洲政治最稳定的国家之一，比其他全球著名的矿业辖区风险更低

### GLOBAL POLITICAL RISK MAP & INDEX 全球政治风险图和指数



#### GHANA 加纳

- GDP USD 66B (2019) / GDP为660亿美元 (2019年)
- 7.7% of GDP from the mining industry 矿业贡献7.7%的GDP
- 2<sup>nd</sup> largest industry behind Financials 该国第二大支柱产业，仅次于金融
- 90% of mineral exports are Gold 矿产出口的90%为黄金
- Minerals & Mining Act protects miners' rights 《矿物和采矿法》包含矿工的权利
- Population ~30M 人口约3000万
- Language – English 语言 – 英语

Country 国家	Risk Index 风险指数
China 中国	69.1
Russian Federation 俄罗斯	62
Australia 澳大利亚	75.7
United States 美国	78.3
Canada 加拿大	80.5
Peru 秘鲁	59.5
<b>Ghana 加纳</b>	<b>56.7</b>
South Africa 南非	56
Mexico 墨西哥	57.6
Brazil 巴西	56

TOP 10 GLOBAL GOLD PRODUCERS  
全球十大黄金生产国

Country 国家	Risk Index 风险指数
Mongolia 蒙古国	54
Guyana 圭亚那	45.2
Burkina Faso 布基纳法索	44.3
Nicaragua 尼加拉瓜	43.7
Mali 马里	36.6
Venezuela 委内瑞拉	30.1

RISK PROFILE COMPS 风险指数评分

## GHANA : Africa's Historic Gold Capital 加纳：历史上非洲的黄金之都

### GLOBAL GOLD MINE PRODUCTION 2020 全球金矿2020年产量

1<sup>st</sup>

Ghana has surpassed South Africa as the continent's top gold producer.  
加纳已经超过南非成为非洲最大的黄金生产国。

7<sup>th</sup>

... ranked gold producer in the world.  
全球第七大黄金生产国

150M+

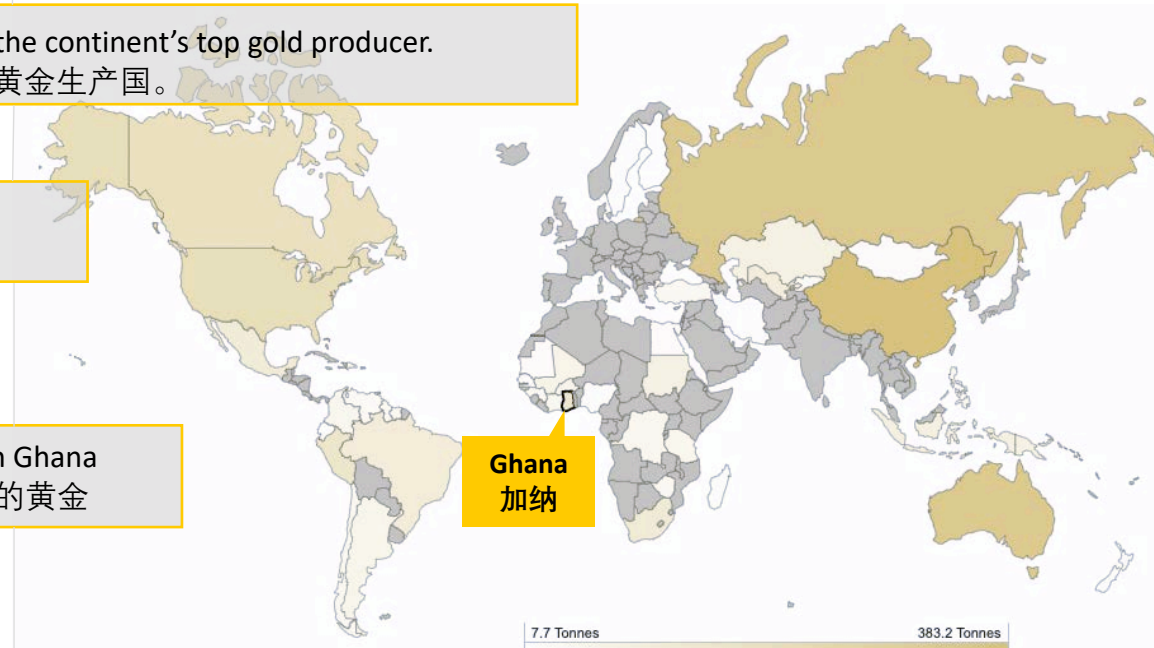
Ounces of gold discovered in Ghana  
加纳发现了1.5亿盎司以上的黄金

3

...of the world's top 4 gold producers have mining operations in Ghana; *Newmont, AngloGold Ashanti, Kinross*  
全球前四大黄金生产商（Newmont、AngloGold、Ashanti和Kinross）均在加纳有采矿运营活动。

10M+

Ghana hosts multiple 10M ounce gold deposits, most of which have been discovered since 1990.  
加纳拥有多个包含1000万盎司左右黄金的矿床，其中大多数都是1990年以后发现的。



Country ▲ ▼	Tonnes ▲ ▼
China	383.2
Russian Federation	329.5
Australia	325.1
United States	200.2
Canada	182.9
Peru	143.3
<b>Ghana 加纳</b>	<b>142.4</b>
South Africa	118.2
Mexico	111.4
Brazil	106.9
Uzbekistan	104.0
Indonesia	82.6
Kazakhstan	76.8

Source 来源: Metals Focus; World Gold Council

## LOCATION & INFRASTRUCTURE

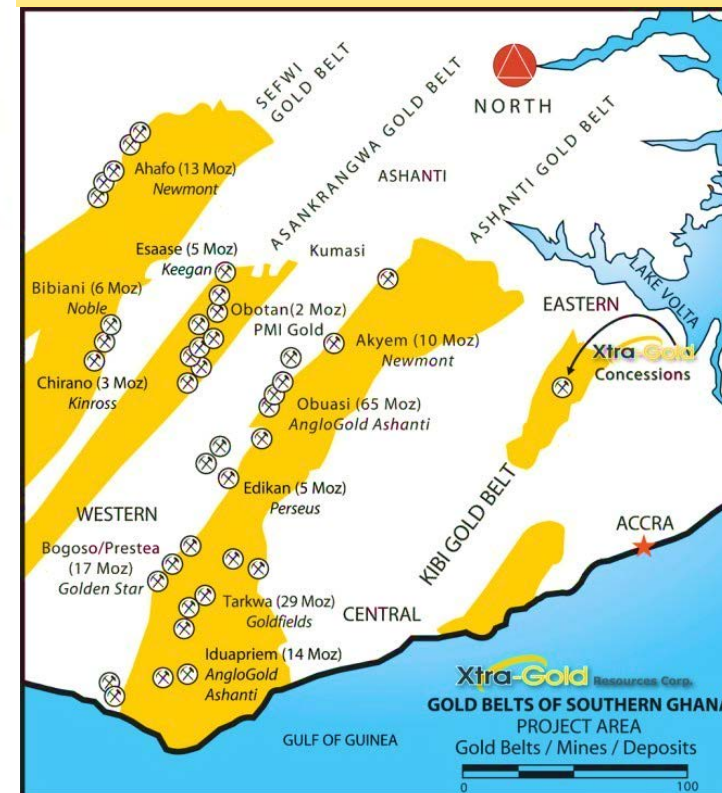
### 位置和基础设施

- Xtra-Gold's mining camp is the closest to the capital city; 120 km from Accra / Xtra-Gold的采矿营地距离首都阿克拉最近，只有120公里。
- Direct air services to Accra from New York, Amsterdam, Brussels, Dubai, London, & Paris 有航班从纽约、阿姆斯特丹、布鲁塞尔、迪拜、伦敦和巴黎直飞阿克拉。
- Easy access, proximity & power could result in low infrastructure costs for mine construction & operations 方便进入，临近电网，这都会令矿山建设和运营的基础设施成本较低。
  - Newly constructed highway to the concessions 新建了到矿权区的公路
  - Hydro electricity from the main grid runs through the concessions 来自主要电网的水电经过矿权区。



## 4 MAIN GOLD BELTS OF SOUTHERN GHANA

### 加纳南部的四条主要的黄金带



1. **SEEWI**
  - Ahafo 13M oz / 1300万盎司
  - Bibiani 6M oz / 600万盎司
  - Chirano 3M oz / 300万盎司
2. **ASANKRANGWA**
  - Esaase 5M oz / 500万盎司
  - Obotani 2M oz / 200万盎司
3. **ASHANTI**
  - **Akyem 10M oz / 1000万盎司**
  - Obuasi 65M oz / 6500万盎司
  - Edikan 5M oz / 500万盎司
  - Bogoso/ Prestea 17M oz / 1700万盎司
  - Tarkwa 29M oz / 2900万盎司
  - Iduapriem 14M oz / 1400万盎司
4. **KIBI**
  - **Xtra-Gold**

## EXPLORATION OVERVIEW: *Ghana's Next Great Gold Discovery*

### 勘探概述：加纳的下一个伟大黄金发现

#### Strategic Land Package in Emerging Gold Belt 处于新兴黄金带战略位置的土地

- **Dominant, wholly-owned, land position** in highly prospective & **under-explored** Kibi-Winneba greenstone belt ("Kibi Gold Belt") 在前景良好、勘探不足的Kibi-Winneba绿岩带内完全拥有的土地
- The Kibi Gold Belt is **geologically analogous** to other prolific Birimian greenstone belts of southern Ghana, including the **neighboring Ashanti Gold Belt**- one of the most highly endowed belts in the world with **estimated gold resources over 130M oz.** / Kibi黄金带的地质情况类似于加纳南部其他多产的Birimian绿岩带，包括相邻的**Ashanti黄金带**—全球资源禀赋最高的资源带之一，**预计黄金资源量超过1.3亿盎司**。
- Competitive advantage of **unsurpassed understanding** of gold mineralization controls gained from **10+ years of continuous exploration efforts** in Kibi Gold Belt. 在Kibi黄金带有十几年的持续勘探经验，对此地的黄金矿化结构有非常深厚的理解，这是一个无与伦比的竞争优势
- Xtra-Gold is the **best-positioned explorer** to make the next significant gold discovery in Ghana. / Xtra-Gold是最有希望在加纳获得下一个重大黄金发现的勘探商。



## EXPLORATION OVERVIEW: *Kibi Gold Belt – Untapped Potential*

### 勘探概述: *Kibi黄金带 – 尚未挖掘的潜力*

#### Pioneering the Discovery of a New Gold Belt 引领新的黄金带的发现之路

##### 1. UNDER-EXPLORED 勘探不足

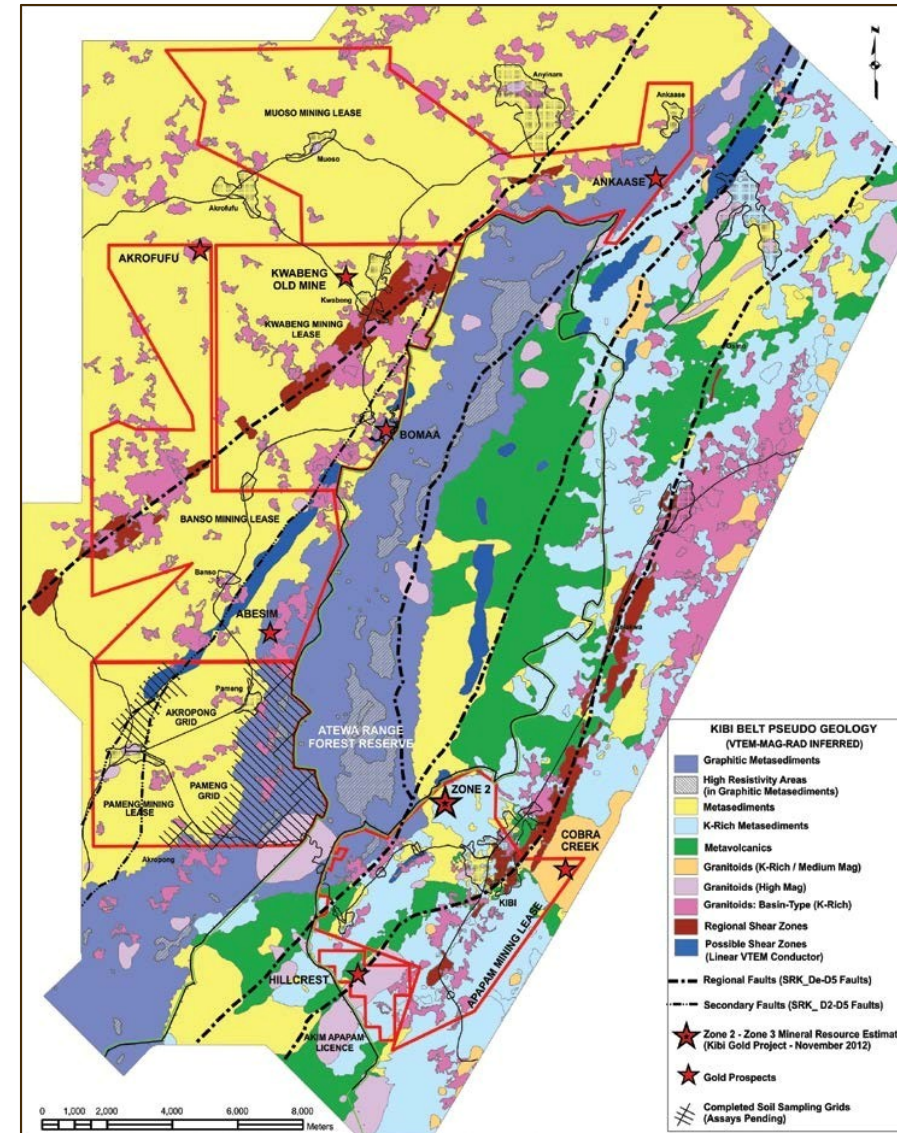
- Historically **limited systematic/modern exploration activity** targeting lode gold deposits in the Kibi Gold Belt 历史上, 针对Kibi黄金带内的黄金矿床进行的系统/现代勘探活动有限。
- Virtually all past mining/exploration efforts focused on **extensive alluvial (placer) gold deposits** throughout the Kibi mining district 实际上, 所有历史开采/勘探活动均集中在Kibi采矿区内大范围的冲积(冲积矿)黄金矿床。

##### 2. MAIDEN DISCOVERY 首次发现

- Xtra-Gold's **Kibi Gold Project Maiden Mineral Resource** represents the **Kibi Gold Belt's first ever maiden resource** generated on a lode gold project / Xtra-Gold的Kibi黄金项目首份矿产资源量代表着Kibi黄金带中黄金项目产生的第一份资源量

##### 3. EXPANSION 扩张

- The **Cobra Creek Gold Project discovery** consists of a **~550 m wide** high-grade gold bearing structural corridor traced over **850 m length** and augurs well for the **potential resource expansion** of the Kibi Gold Project / **Cobra Creek黄金项目发现区**包含一个约550米宽的高品位含金结构走廊, 目前追踪的长度超过850米, 这预示着Kibi黄金项目有资源量扩张的潜力。
  - Strong pipeline of drill-ready gold targets** generated from **extensive grassroots exploration** work by the exploration team over the last 5+ years 在过去五年多的时间内勘探团队进行了大规模的草根勘探, 获得了多个准备钻探的黄金靶区。



## EXPLORATION OVERVIEW: *Kibi Gold Project*

### 勘探概述: *Kibi 黄金带*

Xtra-Gold's maiden mineral resource represents the first ever mineral resource generated on a lode gold project within the Kibi Gold Belt. / Xtra-Gold的首份矿产资源量代表着Kibi黄金带中黄金项目产生的第一份矿产资源量

#### MAIDEN MINERAL RESOURCE ESTIMATE 首份矿产资源量

Zone 2 – Zone 3 二区-三区

Base Case Resource Estimate \* (effective October 26, 2012.) 资源量基准情况\*  
(2012年10月26日)

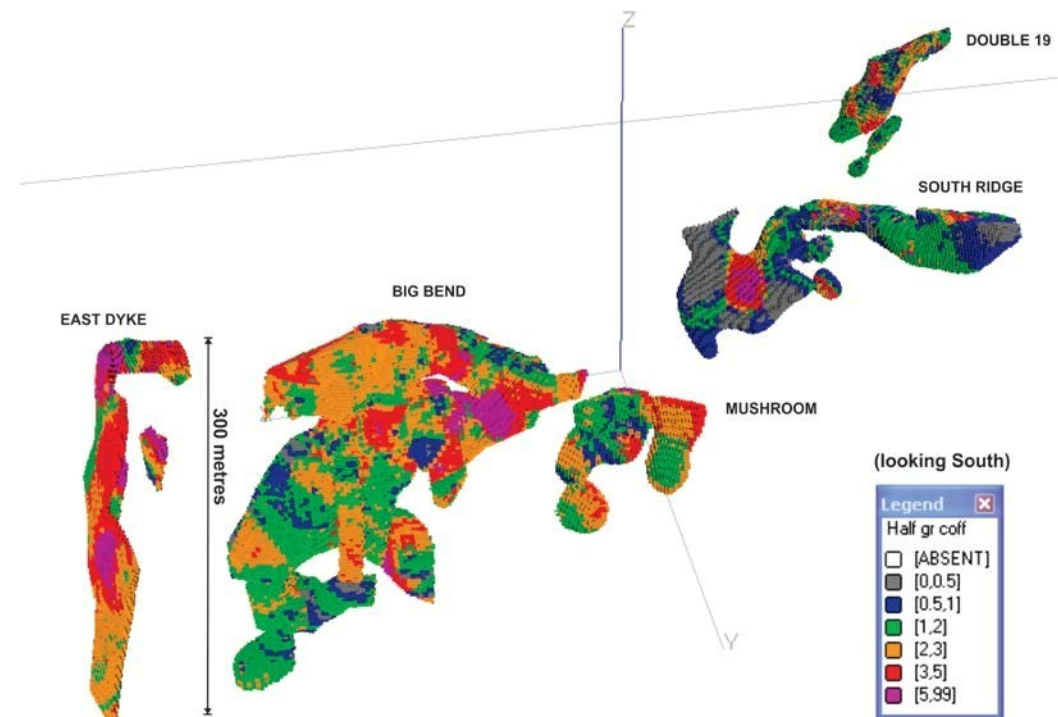
RESOURCE CATEGORY 资 源量类别	CUT-OFF GRADE边界 品位 (g/t Au) (克黄金/吨)	TONNAGE 吨 (Mt) (百万 吨)	GRADE 品位 (g/t Au) (克黄金/ 吨)	CONTAINED GOLD 包 含黄金 (ounces) (盎司)
Indicated 指示	0.5	3.38	2.56	278,000
Inferred 推断	0.5	2.35	1.94	147,000

Base case resource estimate\* encompasses Big Bend, East Dyke, Mushroom, and South Ridge deposits in Zone 2 and the Double 19 deposit in Zone 3 基准情况下资源量涵盖二区内Big Bend、East Dyke、Mushroom和South Ridge四个矿床以及三区Double 19矿床。

All mineralized bodies **come to surface** and **remain open in several directions** 所有矿体都露出地表，并向多个方向开放

- **Potential for expansion** with additional follow up drilling 有扩张潜力，将进行后续钻探。

*Known gold mineralization system extends well beyond current resource estimate  
已知黄金矿化结构系统延伸远超过当前资源量预期值*



Zone 2 - Zone 3 Mineralization Block Model (0.5 g/t Au cut-off); coloured by Grade

**Preliminary metallurgy test work indicates high amenability to 初步冶金测试工作表明非常适合:**

- Gravity upgrading (>50% for oxide & >60% for sulphide) 重力升级 (>50%氧化物和>60%硫化物)
- Cyanidation leaching (>95% recoverable on gravity tails) 氰化浸出 (重力尾矿的采收率>95%)

## EXPLORATION OVERVIEW: *Kibi Gold Project*

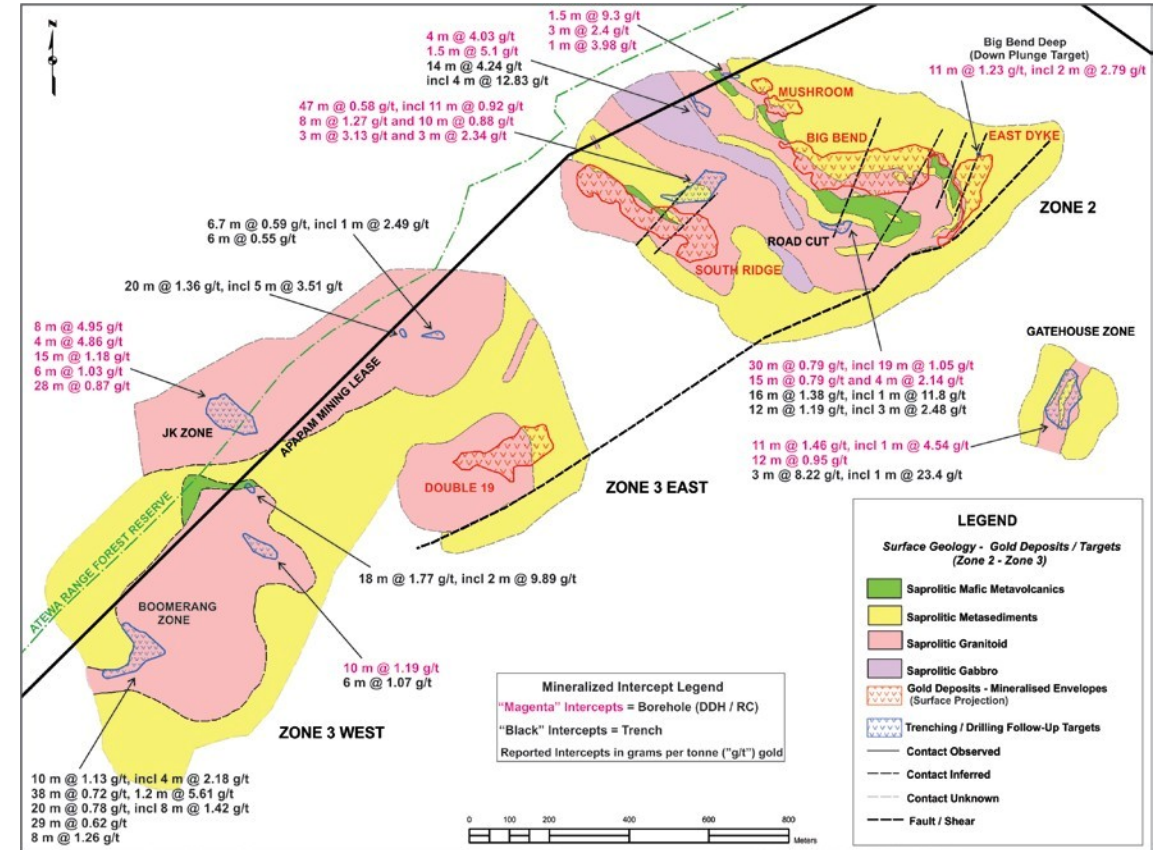
### 勘探概述: *Kibi 黄金项目*

#### Mineral Resource Expansion Potential 矿产资源量扩张潜力

##### Zone 2 – Zone 3 二区-三区

- Maiden resource estimate provides **significant starting position** with all 5 mineralized bodies **remaining open in several directions**; with good potential to expand respective resources by follow up drilling 首份资源量报告是一个很好的起点，所有五个矿体均向多个方向开放，通过后续钻探有很好的资源量扩张潜力。
- Considerable insight gained** on mineralization controls; improving future mineralization targeting / modeling 对矿化结构控制有很深的理解，提升未来的矿化结构定位/建模。
- Additional 5 limitedly defined gold shoots identified** within Zone 2 resource estimate footprint area; **all open for expansion** 在二区资源量范围内已找到另外五个有限确定的黄金脉芽，向所有方向开放，有扩张潜力。
- Further **7 shallow, early stage gold discoveries present** within Zone 3 gold-in-soil anomaly; extending known gold mineralization system to **over 2.5 km in trend length** 在三区土壤含金异常区内有另外7个浅层、早期阶段黄金发现区，延伸已知黄金矿化结构系统至趋势带内2.5公里以上
- All gold targets consist of typical Zone 2 – Zone 3 Granitoid-hosted gold mineralization; indicating **widespread nature of mineralization system / event** 所有黄金靶区包括二区和三区的花岗岩赋存黄金矿化结构，表明矿化结构系统的分布广的特征。
- Boomerang Zone at SW extremity of mineralization trend exhibits favourable litho-structural setting; with irregularities in host granitoid body geometry being the primary structural control for Zone 2 – Zone 3 type gold mineralization / 在矿化结构趋势带西南端的Boomerang区展示了良好的岩性构造环境，不规则的花岗岩主岩是二区和三区黄金矿化结构的主要结构。

**Note:** Readers are cautioned that the JK Zone target lies in the Forest Reserve; outside the Apapam concession; and the Company as presently no rights to explore or mine this mineralization zone. Although Forest Reserve exploration permits are routinely granted by the Ghana Government; there is no assurance that the Company will ever be granted a permit to explore or mine this mineralization zone. 注释：读者应注意，JK区靶区位于森林保护区内，Apapam矿权区以外，本公司目前没有权利勘探活开采这个矿化区。虽然按照规则加纳政府会给予森林保护区的勘探许可证，但是不能保证本公司能够获得勘探或开采这个矿化结构区的许可证。

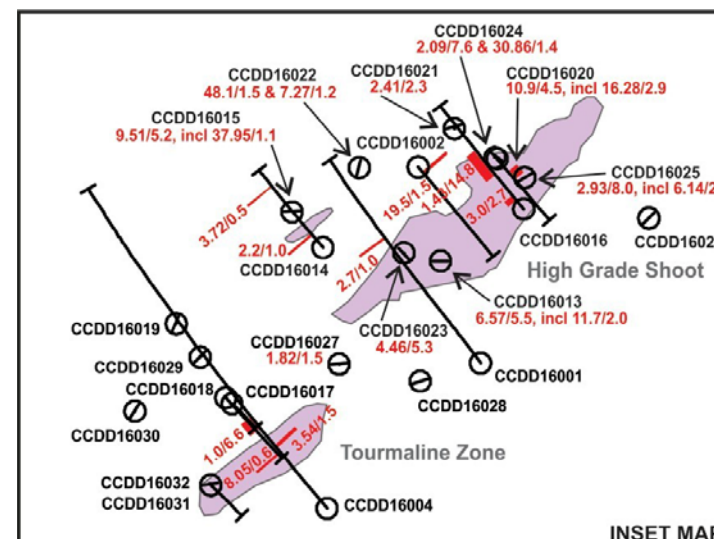
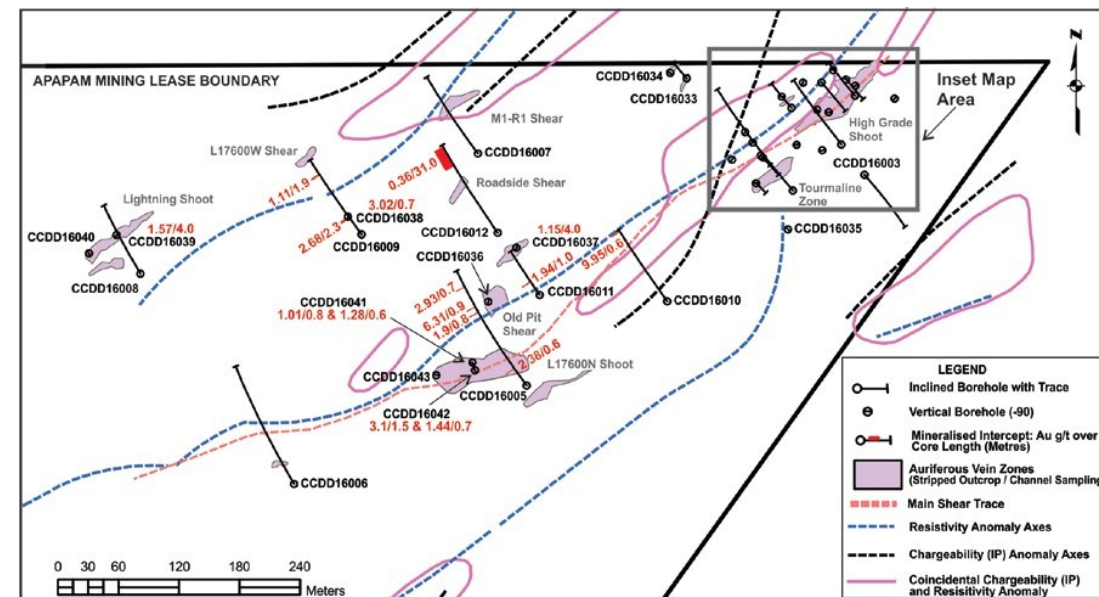


## EXPLORATION OVERVIEW: *Cobra Creek Gold Corridor*

### 勘探概述：*Cobra Creek* 黄金走廊

#### Highly Encouraging First Pass Drill Results 非常令人鼓舞的钻探结果

- 2,639 m Phase I diamond core drill program (43 boreholes) on Cobra Creek Gold Corridor prospect; an approximately **550 m wide**, NE-trending, quartz-feldspar porphyry ("QFP") hosted, multi-structure braided shear zone system traced to date over approximately **850 m strike length** 在Cobra Creek黄金走廊前景区进行总计2639米的一期金刚石钻探活动（43口钻孔），该前景区约550米宽，东北走向，赋存于石英-长石斑岩("QFP")，追踪多个结构交织剪切区系统目前获得走向长度约850米。
- 26 of 43 boreholes yielded exploration significant auriferous drill intercepts**; with high grade quartz – iron carbonate – tourmaline veining in boreholes #CCDD16015, #CCDD16020, and #CCDD16024 exhibiting **multiple visible gold grains** /43口钻孔中的26口钻孔获得了非常好的含金矿段，在钻孔#CCDD16015、#CCDD16020和#CCDD16024获得高品位石英-碳酸铁-电气石矿脉。
- Drill result highlights include: **4.5 m grading 10.9 grams per tonne ("g/t") gold, including 16.28 g/t gold over 2.9 m** in #CCDD16020 and **5.5 m grading 6.57 g/t gold, including 11.7 g/t gold over 2 m** in #CCDD16013 (High Grade Shoot fold structure); and **5.2 m grading 9.51 g/t gold, including 37.95 g/t gold over 1.1 m** in #CCDD16015 and **1.5 m grading 48.1 g/t gold** in #CCDD16022 (High Grade Shoot – NW Branch). 钻探结果亮点包括：钻孔#CCDD16020中见金品位10.9克/吨的4.5米矿段，包含金品位16.28克/吨的2.9米矿段；钻孔#CCDD16013中见金品位6.57克/吨的5.5米矿段，包含金品位11.7克/吨的2米矿段（高品位脉芽折叠结构）；钻孔#CCDD16015中见金品位9.51克/吨的5.2米矿段，包含金品位37.95克/吨的1.1米矿段；钻孔#CCDD16022中见金品位48.1克/吨的1.5米矿段（高品位脉芽-西北分支）
- Surface mapping / drilling observations to date indicate that Cobra Creek high grade gold mineralization hosted by flat-lying, variably folded, extensional veining arrays developed along series of NE-trending, steeply dipping shear zones exhibiting extensive iron carbonate alteration envelopes. 迄今为止的地表填图/钻探观察表明，Cobra Creek高品位黄金矿化结构赋存于平伏、多层的延伸矿脉，而矿脉延伸方向为东北走向，大倾角剪切区，显示了大范围的碳酸铁蚀变。
- Considerable new insight gained on structural controls of the high grade gold mineralization to help guide future exploration efforts on Cobra Creek prospect. 对高品位黄金矿化结构的结构控制拥有新的理解，这有助于指导Cobra Creek前景区的未来勘探。
- Follow up drilling planned on highly encouraging first pass drill results** with program design incorporating vertical holes targeting the flat-lying, high grade, extensional veining systems; as well as further testing of steep controlling shears across the auriferous structural corridor. 计划的后续钻探获得非常令人鼓舞的钻探结果，项目设计包含瞄准平伏、高品位、大范围矿脉系统的垂直钻孔，以及进一步测试含金结构走廊范围内的大倾角控制剪切区。

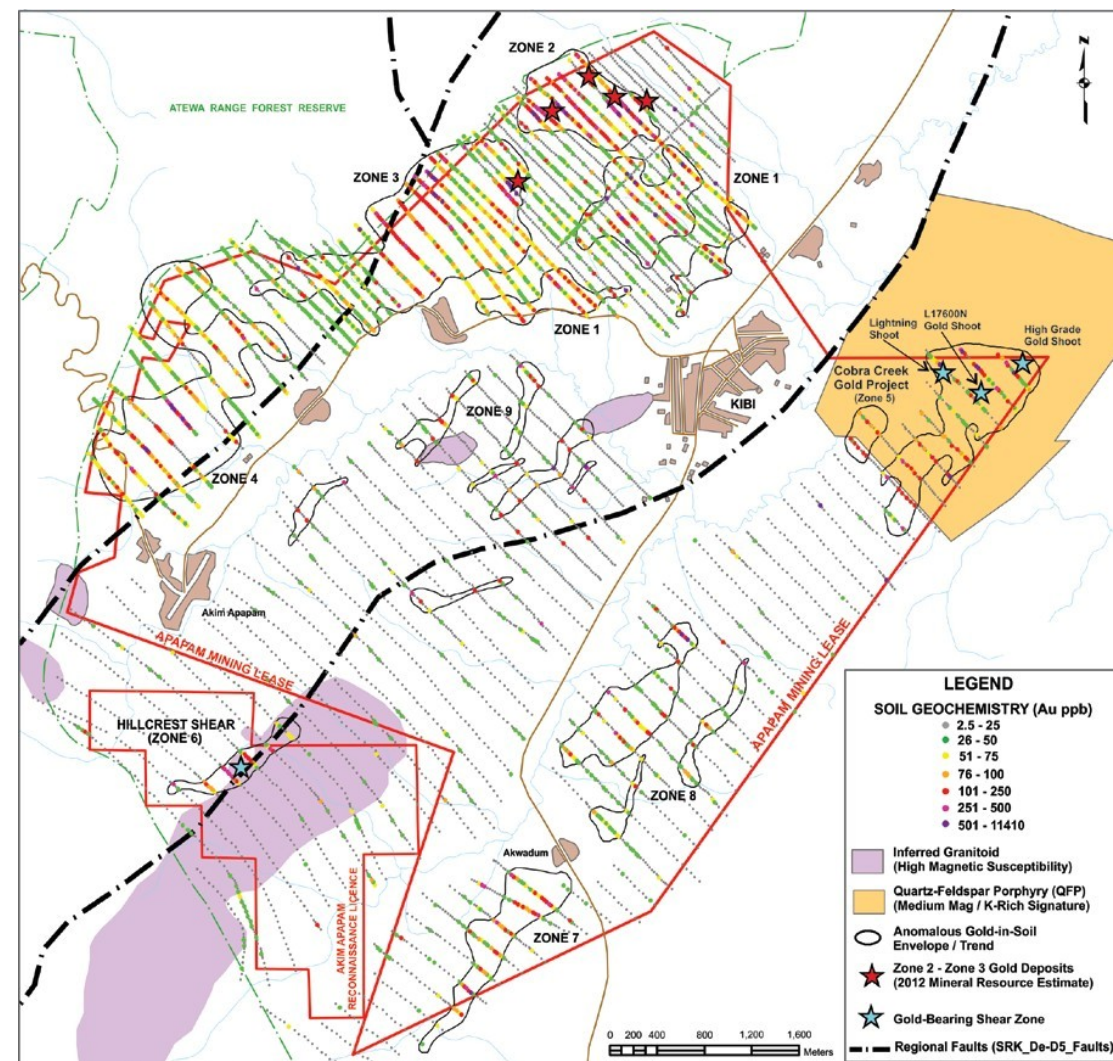


## EXPLORATION OVERVIEW: *Kibi Gold Project*

### 勘探概述: *Kibi 黄金项目*

#### Expanding Gold Mineralization Footprint 扩大黄金矿化结构足迹

- Maiden Mineral Resource reflects work on Zone 2 & Zone 3 gold-in-soil anomalies, first 2 targets focused on since commencement of field work on project ; with **excellent potential to discover new deposits across the Kibi Gold Project**, as well as within Zone 2 and Zone 3 首份矿产资源量报告反映的是二区和三区土壤含金异常带的工作结果。现场工作以来专注于前两个靶区，在Kibi黄金项目内有潜力发现新的矿床，在二区和三区也有潜力发现新的矿床。
- Considerable insight gained on mineralization controls over last 5 years**; permitting prioritization of gold-in- soil anomalies / VTEM targets; and **improved drill targeting** 过去五年获得了对矿化结构控制的更深入了解，优先许可土壤含金异常带/电磁靶区，提升钻探靶向效果。
- 9 priority gold-in-soil trends yielded by property-wide soil geochemistry; with anomalies typically spatially associated with inferred structural corridors and/or granitoid bodies 通过在整个项目区进行地球化学勘测，确定了九个优先的土壤含金趋势带，异常区通常与推断结构走廊和/或花岗岩体相关。
- 2 new auriferous shear systems identified to date from gold-in-soil anomaly follow up work; Cobra Creek Gold Corridor (Zone 5) and Hillcrest Shear (Zone 6)截止目前土壤含金后续工作确定了两个含金剪切系统，Cobra Creek黄金走廊（五区）和Hillcrest剪切区（六区）
- Cobra Creek Gold Corridor: ~550 m wide, NE-trending, high-grade gold bearing structural corridor traced over ~850 m strike length**; with QFP-hosted braided shear system encompassing 9 known auriferous structures characterized by widespread, flat-lying extensional veining arrays / **Cobra Creek黄金走廊：约550米宽，东北走向，在约850米长的走向中发现高品位含金结构走廊，QFP赋存的交织剪切系统包含九个已知含金结构，特点是广泛的平伏延伸脉脉。**
- Hillcrest Gold Target : ~1,200 m x 100 m – 200 m tight/linear gold-in-soil anomaly spatially associated with inferred regional fault bounding Belt-type granitoid body. Single scout trench returned 12.0 m @ 2.23 g/t gold from granitoid hosted shear zone / Hillcrest黄金靶区：约1,200米 x 100 米 – 200 米紧密/线性土壤含金异常区，空间上与推断的区域断层有关，边界是带式花岗岩体。从花岗岩赋存剪切区的单个槽探获得金品位2.23克/吨的12米矿段。**



## MANAGEMENT 管理层

James Longshore  
**President, CEO**  
总裁兼首席执行官

- 25 years experience with resource-based companies / 25年自然资源公司的工作经验
- Co-Founder of Xtra-Gold Resources Corp. 共同创建Xtra-Gold Resources Corp.
- Managing Director of Ghana operations since 2009 自2009年担任加纳运营公司的董事总经理

Yves P. Clement  
**Vice-President, Exploration**  
勘探副总裁

- 30 years international experience in generation, evaluation, and development of exploration properties 有30年生成、评估和开发勘探项目的国际运营经验。
- Former Senior Project Geologist with Lake Shore Gold Corp. and Aurora Platinum Corp. 曾任Lake Shore Gold Corp. 和 Aurora Platinum Corp. 的高级项目地质学家
- Vice-President of Exploration since 2006 自2006年开始担任勘探副总裁

Victor Nkansa  
**Chief Financial Officer**  
首席财务官

- 30 years business experience including 15 years experience in the mining industry 有30年商业经验，其中包括15年矿业从业经验
- Chartered accountant and Master of Business Administration 注册会计师和工商管理硕士
- Director of Ghana Subsidiary since 2005 自2005年担任加纳子公司的董事

John C. Ross  
**Finance Manager**  
财务经理

- 33 years business experience, including 23 years experience in the mining industry 有33年工作经验，其中包括23年矿业从业经验。
- Former CFO of Iamgold Corp., Quadra FNX Mining Ltd. and Colossus Mineral Inc. 曾任Iamgold Corp.、Quadra FNX Mining Ltd.和Colossus Mineral Inc. 的首席财务官
- Chartered accountant and Finance Manager since 2010 注册会计师，自2010年担任财务经理

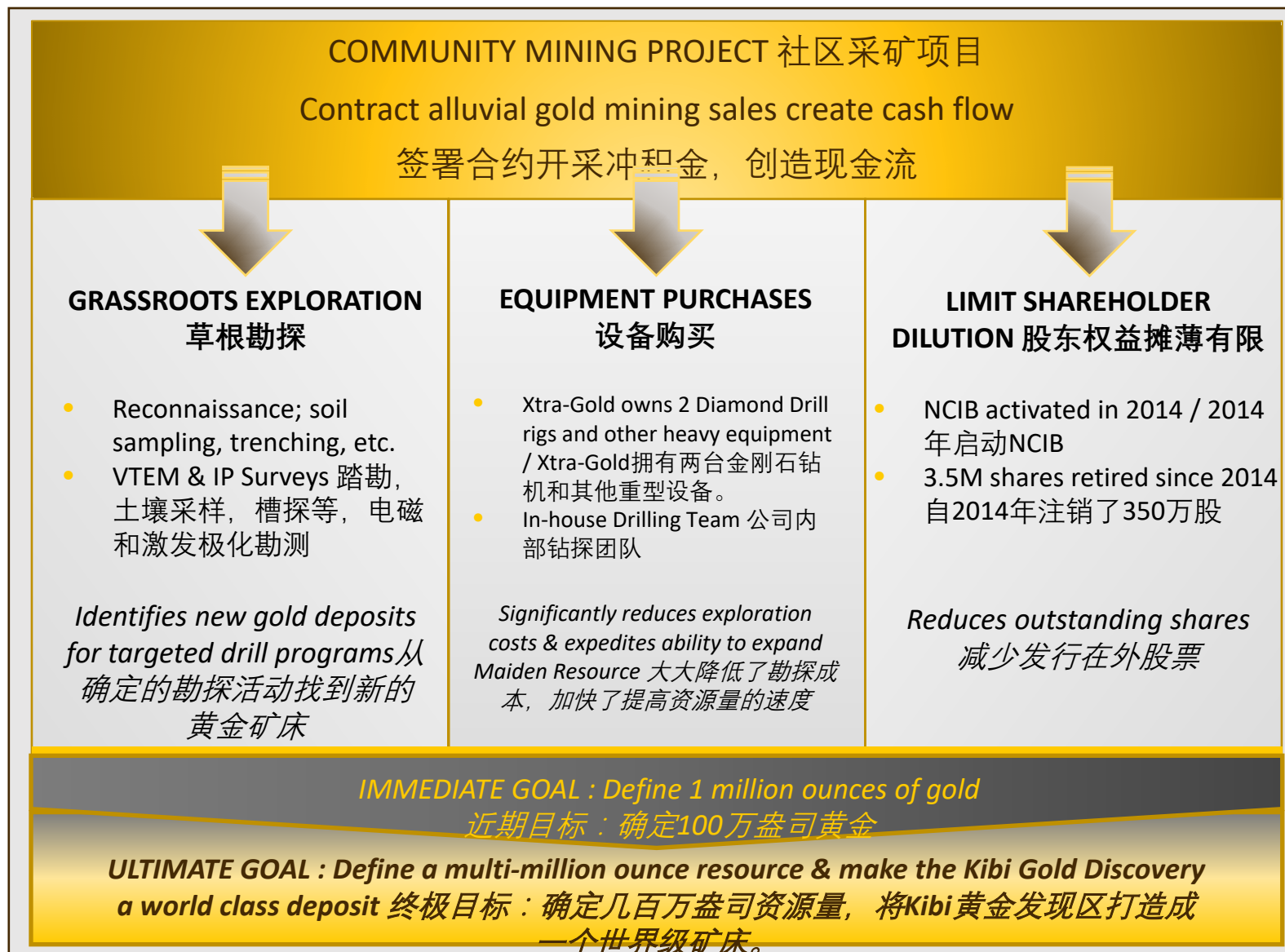


**Xtra-Gold**



## STRATEGY TO MAXIMIZE SHAREHOLDER VALUE

### 最大化股东价值的策略





**Xtra-Gold** Resources Corp.

**TSX : XTG / OTCQB : XTGRF**

Pioneering the Discovery of a New Gold Belt in Ghana, West Africa  
在西非加纳引领新的黄金带发现之路

**Contact 联系人:**

James Longshore

CEO 首席执行官

E: [info@xtragold.com](mailto:info@xtragold.com)

T: 1-416-628-2881