



Corporate Presentation / 公司报告

CSE: KUYA | OTCQB: KUYAF | FRA: 6MR1

HIGH GRADE | GROWING | SILVER PRODUCTION | AMERICAS /
品位高 | 增长快 | 白银生产 | 美洲



**FALL 2021 /
2021年秋**

IMPORTANT DISCLOSURES - PLEASE READ CAREFULLY / 重要的信息披露 – 请仔细阅读

This presentation is being provided for information purposes only and does not constitute or form part of, and should not be construed as, an offer or invitation to sell or any solicitation of any offer to purchase or subscribe for any securities of Kuya Silver Corp. (the “**Company**”) in Canada, the United States or any other jurisdiction. Trading in the securities of the Company should be considered highly speculative. This presentation is not, and in no circumstances is it to be construed as, a prospectus, offering memorandum, an advertisement, or a public offering of securities. No securities regulatory authority or similar authority has reviewed or in any way passed upon the document or the merits of any securities of the Company and any representation to the contrary is an offence. The information contained in this presentation is a summary description of the Company prepared by the Company and there is no representation or warranty by the Company or any other party as to the accuracy or completeness of the information set forth herein and no recipient will be able to rely on any representations or warranties contained in this presentations. Except as otherwise stated, information included in this presentation is given as of the date hereof. The delivery of this presentation shall not imply that the information herein is correct as of any date after the date hereof. Readers should not construe anything in this presentation as investment, legal or tax advice. Each recipient should consult its own investment, legal, tax and other advisers regarding the financial, legal, tax, and other aspects of the Company, including whether it is legally permitted to purchase any securities from the Company under applicable laws. All dollar amounts referenced herein, unless otherwise indicated, are expressed in U.S. dollars.

CAUTIONARY NOTE REGARDING FORWARD-LOOKING INFORMATION / 关于前瞻性信息的警示说明

Statements contained in this presentation that are not current or historical factual statements may constitute “forward-looking information” within the meaning of applicable securities laws. The forward-looking information reflects current expectations regarding future results, performance or achievements and speaks only as of the date of this presentation. When used in this presentation, forward-looking information can be identified by such words as “may”, “will”, “expect”, “believe”, “plan”, “project”, “anticipate”, “intend”, “estimate” and other similar terminology. Such forward-looking information involves known and unknown risks, uncertainties and other factors that may cause the actual results, performance or achievements of the Company to be materially different from any future results, performance or achievements expressed in or implied by such information.

Such risks, uncertainties and other factors include, but are not limited in any manner to: risks inherent in exploration activities; volatility and sensitivity to market prices for silver; volatility and sensitivity to capital market fluctuations; the impact of exploration competition; the ability to raise funds through financings; imprecision in historical estimates; environmental and safety risks including increased regulatory burdens; unexpected geological conditions; changes in government regulations and policies, including trade laws and policies; demand for silver; failure to obtain necessary permits and approvals from government authorities; weather and other natural phenomena; and other exploration, development, operating, financial market and regulatory risks. The foregoing list of factors is not exhaustive. Although management of the Company believes that the assumptions underlying and the expectations reflected in the forward-looking information are reasonable, significant risks and uncertainties are involved in such information. Management can give no assurances that its assumptions, estimates and expectations will prove to have been correct. Forward-looking information should not be read as guarantees of future performance or results, and will not necessarily be accurate indications of whether or not or the times at or by which such performance or results will be achieved. Many factors that are beyond the Company’s control could cause actual results to differ materially from the results discussed in the forward-looking statements. When considering forward-looking information in this presentation, prospective investors should ensure that the preceding information, the risk factors and the other contents of this presentation are all carefully considered. Except as expressly required by law, the Company does not assume any obligation to update or revise forward-looking information, or to publicly release the results of any revisions to forward-looking information to reflect new events, assumptions or circumstances.

IMPORTANT DISCLOSURES - PLEASE READ CAREFULLY / 重要的信息披露 – 请仔细阅读

CAUTIONARY NOTE REGARDING TECHNICAL DISCLOSURE / 关于技术披露的警示说明

The information in this presentation has been reviewed and approved by Dr. Scott Jobin-Bevans, P.Geo., who is a Qualified Person for the Company under the definitions established by National Instrument 43-101 (“NI 43-101”). A qualified person, as defined by NI 43-101, has not done sufficient enough work to verify the historical assay results and technical information reported herein. Historical mineral resources and reserves for the Bethania Property were estimated by Dionicio Milla Simon (Geological Engineer), as documented in a report entitled, “Mina Santa Elena Estimacion de Recursos y Reservas Minerales”, dated March 2016. The historical mineral resources and reserves were calculated using simple block modelling for ore stopes and larger resource blocks, using the data collected through drifting and significant rock sampling from within the mine workings. The historical Bethania Mine has more than 6,000 metres of horizontal development among seven different veins. In addition, there is vertical development in the ore reserve areas between production stopes. Mineral reserve estimates considered mineralized material that was immediately accessible by existing mine workings and was calculated exclusive of mineral resources. The vein and ore development were methodically and consistently sampled for silver, lead and zinc, as well as the thickness of each vein sample and location recorded. Copper was assayed only intermittently and more sampling is required in order to include copper in any future mineral resource or mineral reserve estimates. No cut-off grade was provided but a specific gravity (density) of 3.0 and a dilution factor of 5% were applied. The historical estimates were completed using the categories set out in sections 1.2 and 1.3 of NI 43-101 and following the guidelines of the Canadian Institute of Mining, Metallurgy and Petroleum’s CIM Definition Standards on Mineral Resources and Mineral Reserves, as adopted by CIM Council August 20, 2000, and amended in 2014. There are no recent estimates or data available to the Company. Verification of the historical mineral resource and reserve estimates would require sampling of mineralization at surface and underground (drill holes and on-vein sampling in mine workings) to generate a statistically significant number of samples of the historical resource and reserve blocks. A qualified person has not done sufficient work to classify the historical estimates as current mineral resources or mineral reserves and the Company is not treating the historical estimates as current mineral resources or mineral reserves. Investors should not rely on the historical estimates as current mineral resources or mineral reserves until they have been verified and supported in a technical report in accordance with NI 43-101.

Metal Price assumptions in USD: Ag - \$26.20/oz, Au - \$1782.30/oz, Cu - \$9,368/t, Pb - \$2,217.95/t, Zn - \$2,879.13/t



WELL-RUN SILVER MINES COMMAND A MARKET PREMIUM

Bethania is a great first asset

Recent Past

- Producing silver mine until 2016 – now on care and maintenance.
- **Extensive database** of information with clear geologic model in place.
- Earn-in acquisition signed with Kuya late 2017
- Mine debt retirement completed in 2019
- Technical program for mine expansion initiated
- Completed initial 43-101 technical report

RTO - Present (2020-2021)

- ✓ RTO Q3 2020 (**June-Sept**)
- ✓ Raised C\$21.5M (**two tranches, '20-21**)
- ✓ Received EIA approval (**August '20**)
- ✓ Closed acquisition of mine (**December**)
- ✓ Engaged Mining Plus for PEA (**December**)
- ✓ Drill/update historical estimate (**In Progress**)
 - PEA – Mine Expansion
 - Finance plant/expansion
- ✓ Build management team (**In Progress**)

Future Vision (2022+)

- Commission/Production Bethania
- Low cost silver production
- Aggressive regional exploration near Bethania
- Next growth stage: expand Bethania, develop Kerr Project, Ontario (Canada)
- Longer-term growth from regional exploration in Peru and Silver Kings project, Canada
- Re-rating potential based on comparable public **silver mining** companies

经营良好的银矿拥有市场溢价

Bethania是一个非常优质的资产

最近

- 生产至2016年 – 现在处于保养和维护阶段
- 庞大的信息数据库，有明确的地质模型。
- 2017年底与Kuya签署了分期收购协议
- 2019年完成矿山债务清偿
- 矿山扩建的技术方案启动
- 完成初步的43-101技术报告

反向收购 – 现在 (2020-2021)

- ✓ 2020年第三季度完成反向收购（6月-9月）
- ✓ 募集2150万加元（分两批，2020-2021年）
- ✓ 获得环评批准（2020年8月）
- ✓ 完成收购矿山（12月）
- ✓ 聘请Mining Plus进行初步经济评估（12月）
- ✓ 钻探/更新历史资源预估值（正在进行）
 - 初步经济评估 – 矿山扩建
 - 为加工厂/扩建融资
- ✓ 组建管理团队（正在进行）

未来愿景(2022+)

- Bethania试运行/投产
- 低成本白银生产
- 在Bethania附近进行积极的区域勘探
- 下一个增长阶段：扩张Bethania，开发加拿大安大略省Kerr项目
- 秘鲁的区域勘探和加拿大的Silver Kings项目带来的长期增长
- 基于可比的上市白银公司的重新评级潜力

SHARE STRUCTURE / 股权结构

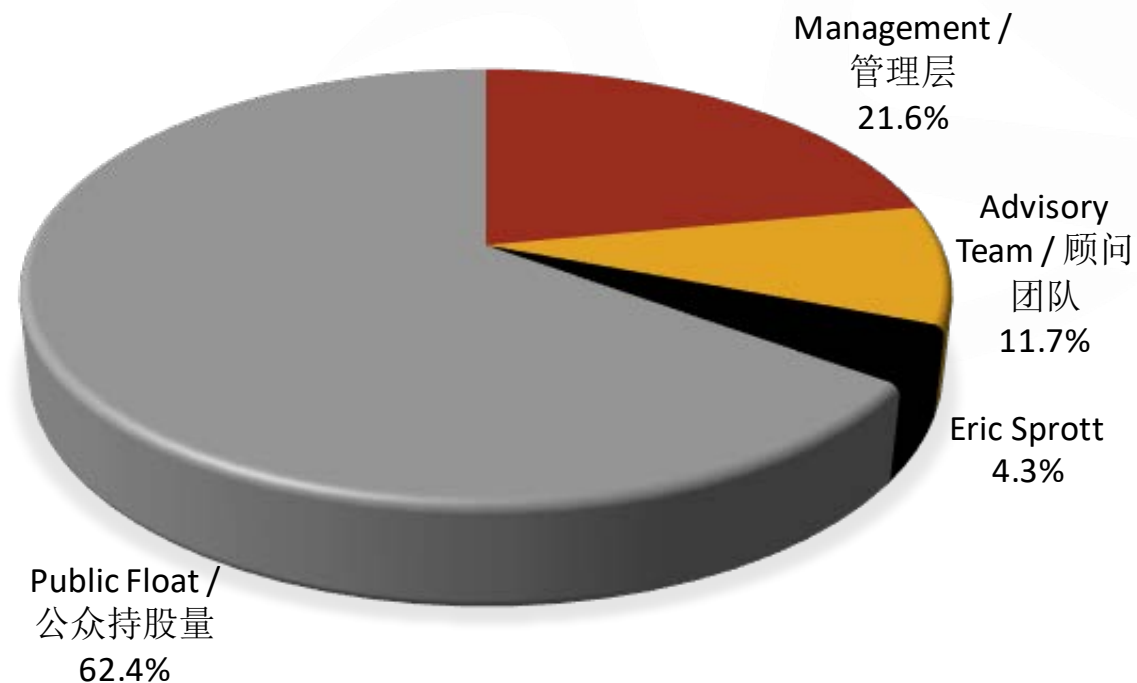
Shares Outstanding / 发行在外股票	45,179,981
Market Cap. (Sept. 13 th) 市值（9月13日）	C\$60.54M/ 6054万加元
Warrants (C\$2.60 strike) / 认股权证（行权价2.60加元）	2,421,325
Options (C\$0.90 - \$4.15 strike) / 期权（行权价0.90 - 4.15加元）	1,797,500
Fully Diluted / 完全摊薄后股数	49,398,806

Significant Shareholders / 大股东

Management / 管理层	21.6%
Kuya Advisory Team (see slide 20) / Kuya顾问团队（参见第20页）	11.7%
Eric Sprott	4.3%

Other Large Shareholders / 其他大股东

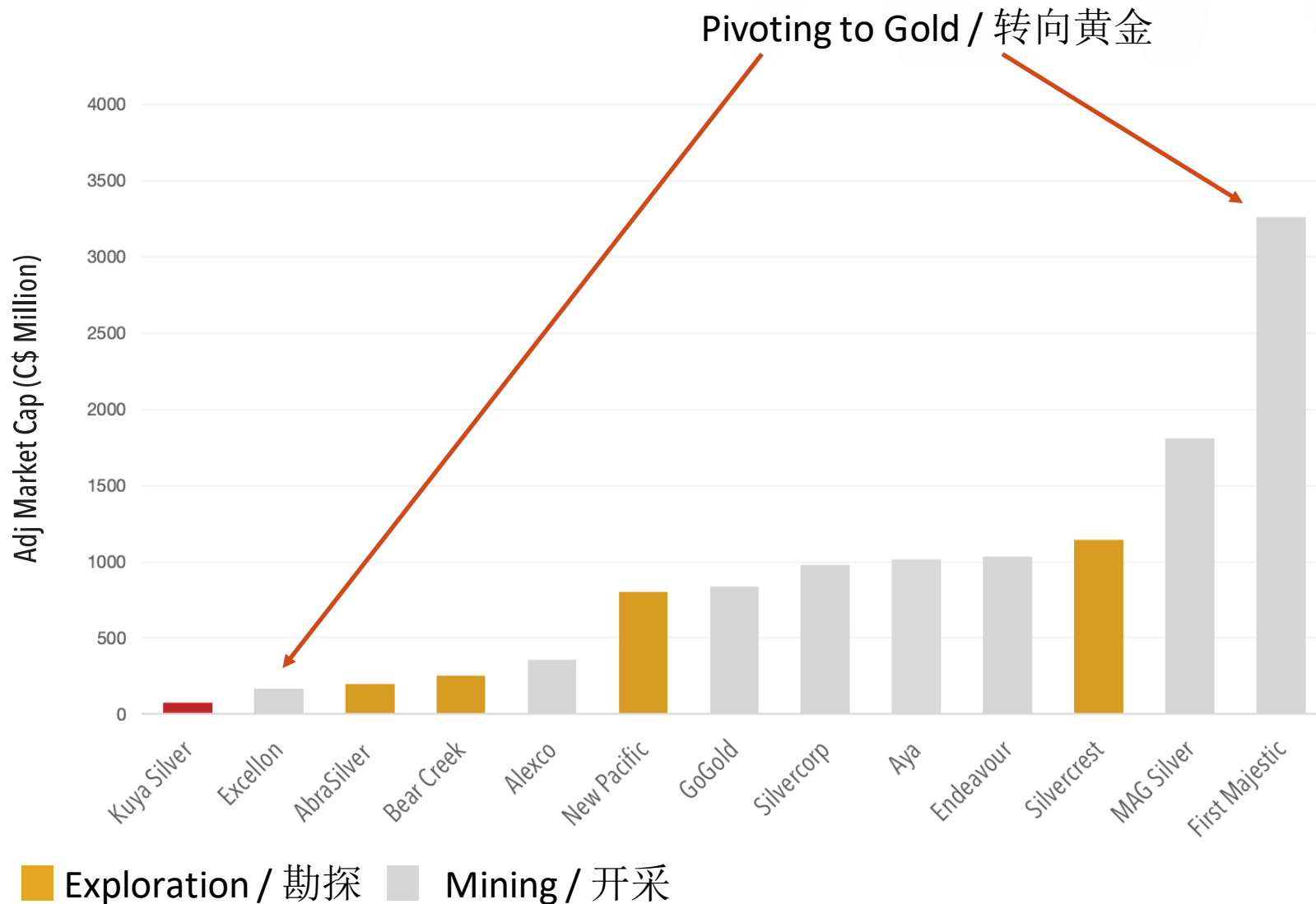
Sprott Asset Management
Crescat Capital
First Cobalt Corp.
Earth Resource Investment Group



SILVER COMPANIES - VERY SMALL SECTOR / 白银公司 - 行业非常小

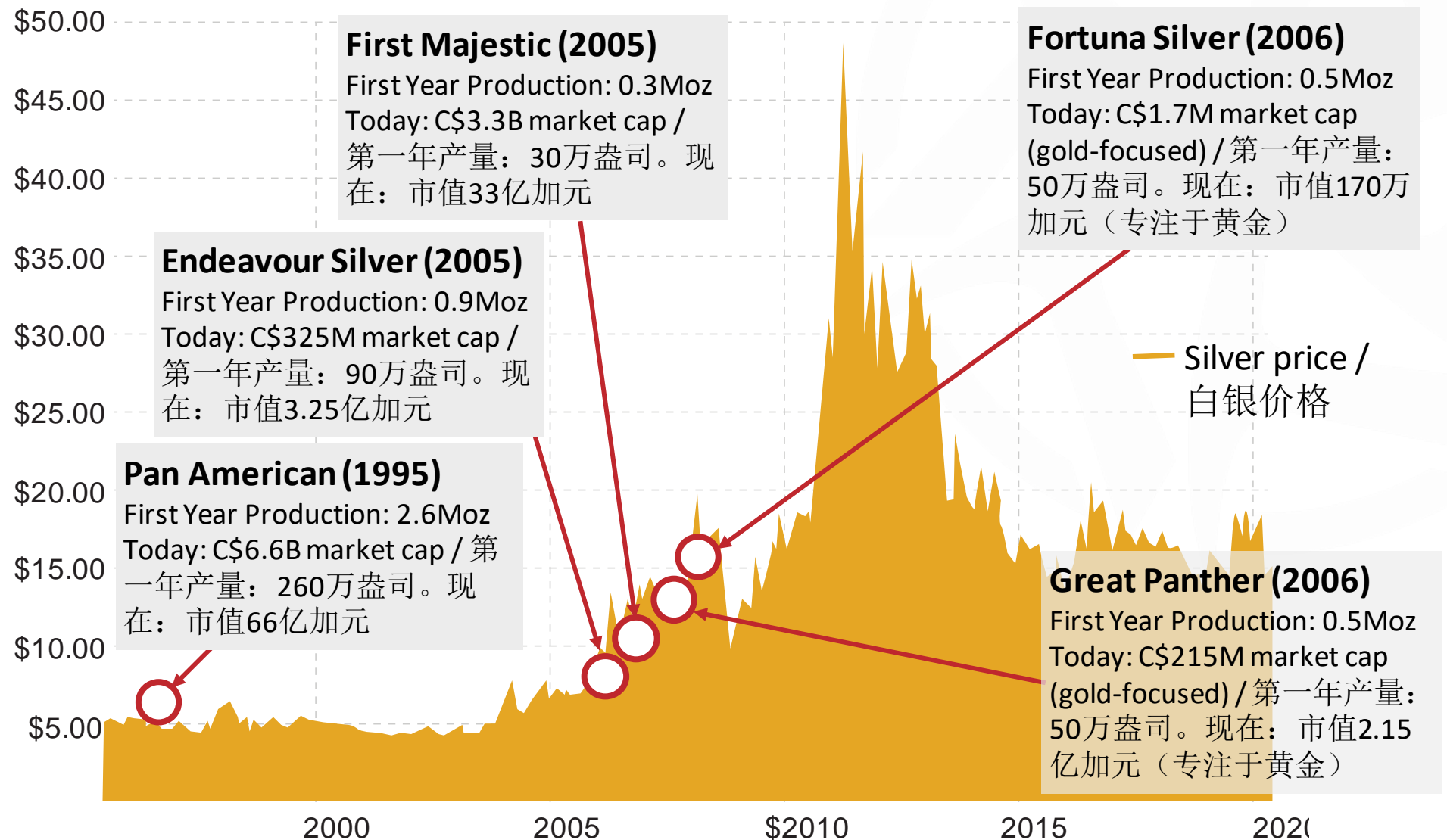
Silver Equities Universe / 白银股领域

- Lack of good investment choices drives premium valuations / 缺乏良好的投资选择推动估值溢价
- The investable silver universe is very small / 可投资的白银领域非常小
- Significant value increase for production / 产量的价值大幅增加
- Production and/or significant exploration projects typically valued at C\$100M – C\$1 billion+ / 在产和/或优质的勘探项目通常估值1亿加元-10亿加元以上



WHAT DO THESE SUCCESSFUL SILVER COMPANIES HAVE IN COMMON? / 这些成功的白银公司有什么共同点?

Start **small**
and grow
through
production
and
acquisition
/ 开始较
小, 通过生
产和收购发
展壮大



FOLLOWING A SUCCESSFUL PROVEN STRATEGY / 遵循一个成功的、经过验证的策略

The **Bethania Mine** will Launch the Market's Next Silver Mining Company / **Bethania矿**将启动市场中下一个白银开采公司

1

Identify a high-grade silver mine (e.g. Peru or Mexico – the two most prolific silver mining countries in the world) – benefitting from strong mining culture, and infrastructure / 确定一个高品位的银矿（如秘鲁或墨西哥 – 全球两个白银产量最大的国家） - 受益于强大的采矿文化和基础设施。

START with a great silver mining asset!
/ 启动一个优良的白银开采资产！

2

Acquire small-scale mines from local owners – with institutional market access to capital we are able to drill (increase resources/reserves) and expand (increase production/reduce costs) / 从当地业主手中收购小规模矿山--通过机构市场获得资本，我们能够进行钻探（增加资源/储量）和扩张（增加产量/降低成本）

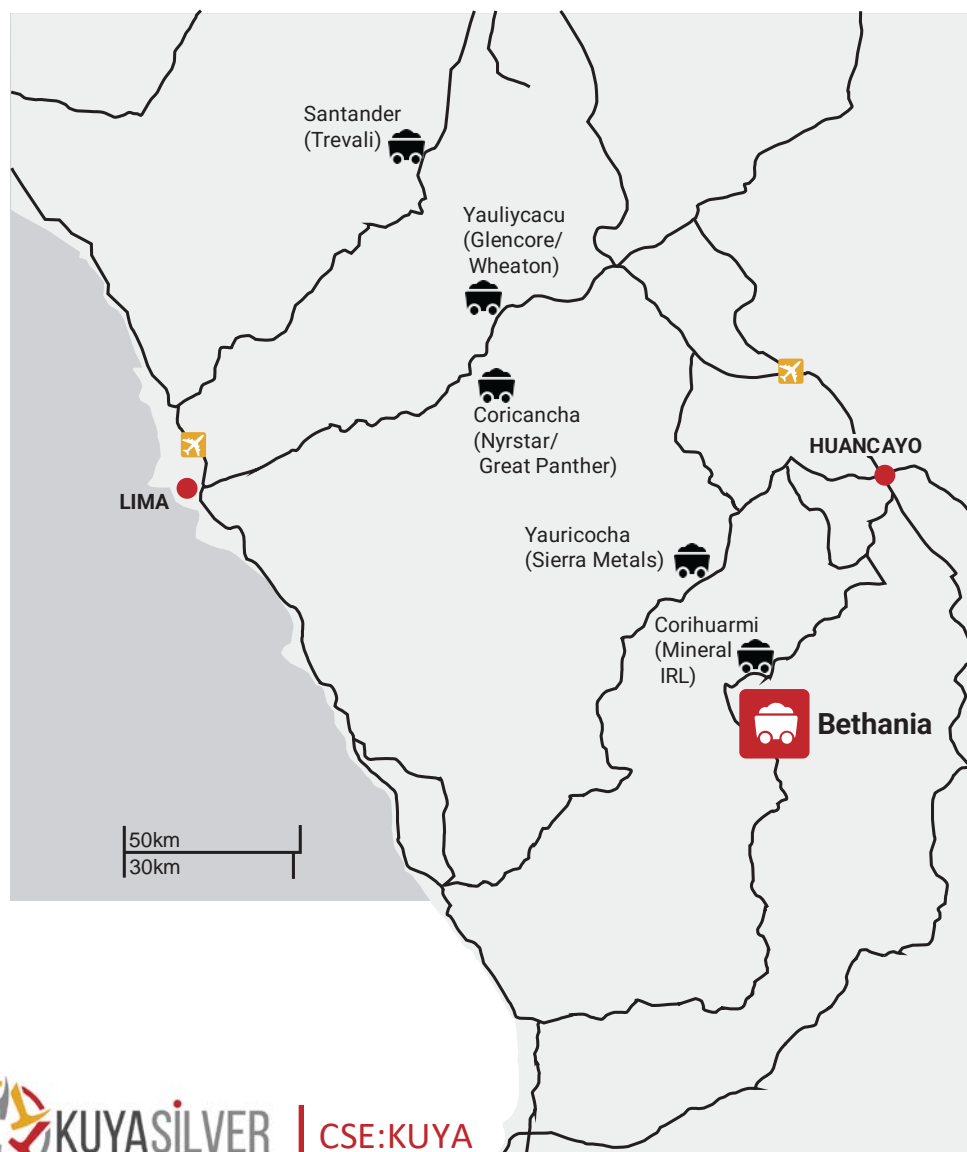
3

Benefit from by-product sales: base metals and gold (65%+ revenue from silver in our case) / 从副产品销售中获益：基本金属和黄金（在我们的案例中，65%以上的收入来自白银）

4

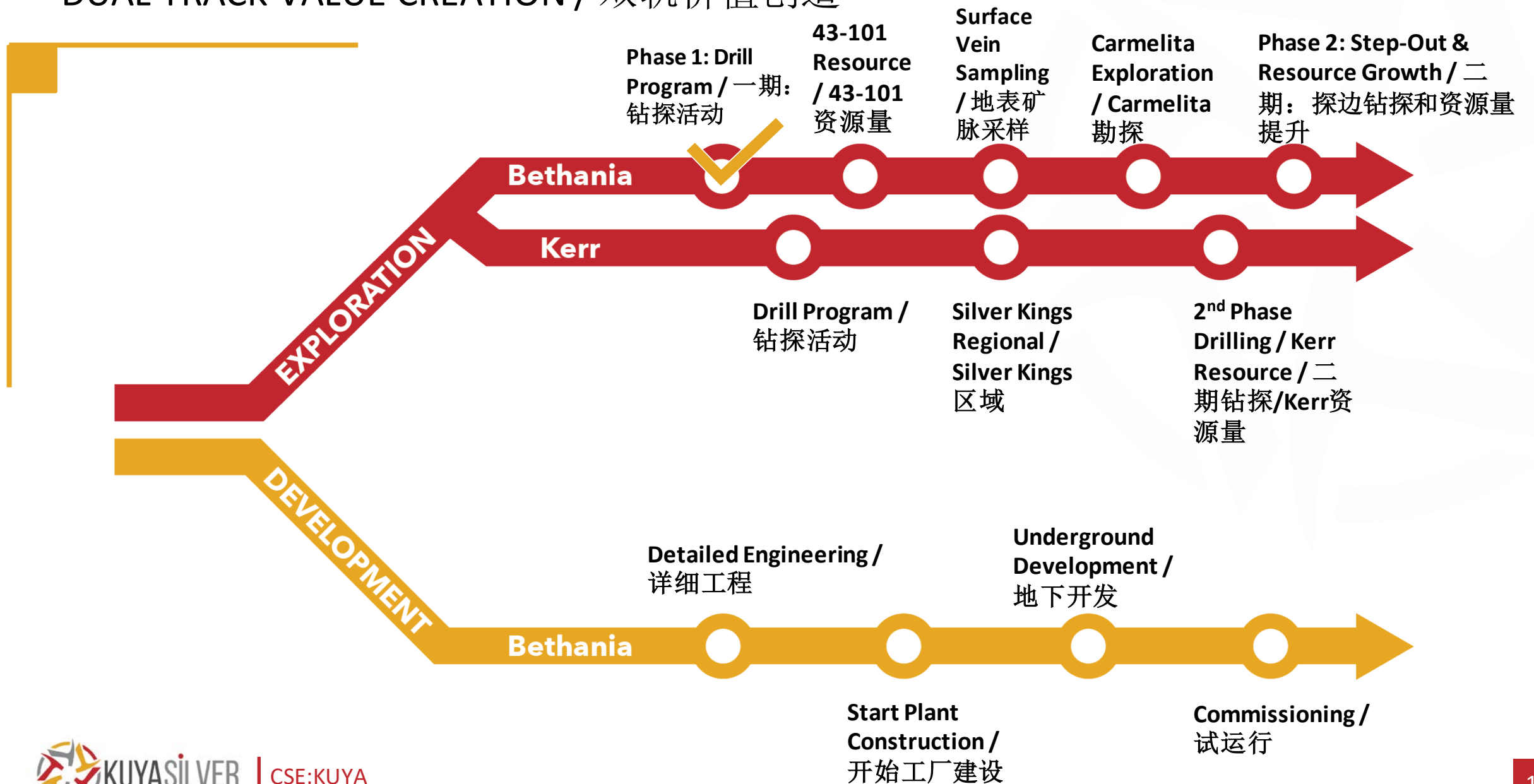
Lower risk: predictable geology, low capital intensity, well-established mining methods, off-the-shelf processing methods, established workforce, and permits in place / 风险较低：可预测的地质状况、低资本密集度、成熟的采矿方法、现成的加工方法、熟练的劳动力和到位的许可证

GREAT ACCESS AND HISTORY / 交通便利，历史悠久



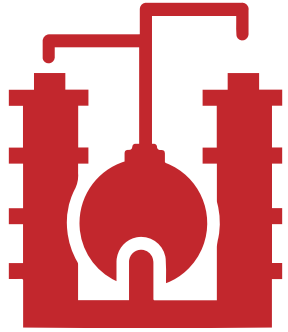
- Located in major silver-lead-zinc mining district in Central Peru / 位于秘鲁中部的大型银-铅-锌矿区
- Access mine by road from Huancayo (major city) / 可以从Huancayo（主要城市）通过公路进入矿区
- Daily flights from Lima to Jauja (near Huancayo) / 每天都有从利马到Jauja（Huancayo附近）的航班
- Mine located near mining village of Bethania / 位于采矿村Bethania附近的矿场
- The Bethania Mine formally opened in 1977 after discovery of two veins (Española and 12 de Mayo) and has been operating at a small scale on and off for 40 years / 在发现两个矿脉（Española和12 de Mayo）后，Bethania矿于1977年正式开张，40年来一直在小规模地断断续续运营
- Peruvian family acquired Bethania mine, restarted ore production in 2009 and began toll processing in 2013 / 秘鲁家族收购了Bethania矿，于2009年重新启动矿石生产，并于2013年开始收费加工。
- Achieved production of 28,788 tonnes in 2014, producing 425,000 oz silver equivalent (only lead and zinc by-products) / 2014年实现产量28,788吨，生产425,000盎司银当量（只有副产品铅和锌）

DUAL TRACK VALUE CREATION / 双轨价值创造



BETHANIA EXPANSION – OPTIMIZING FUTURE PRODUCTION / BETHANIA扩张 – 优化未来生产

Potential Cost Savings / 潜在成本节省



TREATMENT/ REFINING / 处理/精炼

- Onsite 350 tpd facility / 现场日处理量350吨的加工厂
- Better TC/RC market / 更好的TC/RC市场
- addition of copper/gold circuit / 增加铜/黄金回路



PROCESSING / 加工

- no toll milling fees / 无须支付加工费
- greater recoveries / 回采率更高



TRANSPORT / 运输

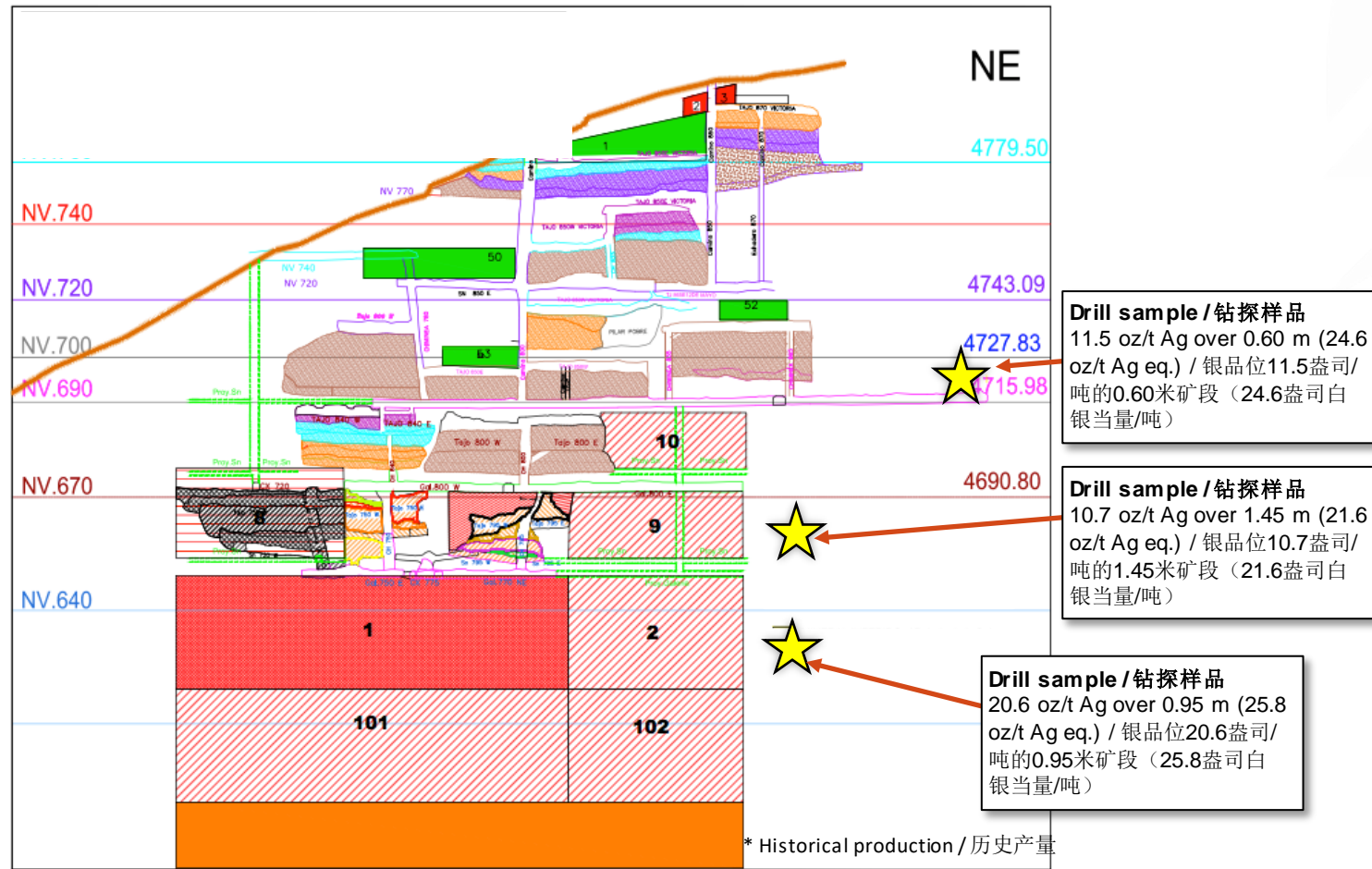
- eliminate long haul ore trucking / 不需要长距离的矿石运输

Onsite Production / 现场生产

- High grades, higher recoveries / 高品位，回采率更高
- No royalties or streams / 无权利金或产量流
- Mining near surface (lower haulage, mining costs vs. deep mines) / 近地表开采（与深矿相比，运输和开采成本较低）
- Low non-discretionary sustaining capital, can increase with higher profits / 非可控性维持资本低，可随着利润的增加而增加
- Lower G&A (no legacy costs) / 更低的一般及行政费用（无遗留成本）

SIMPLE MINING – WELL UNDERSTOOD MINERALIZATION – OPEN ALONG STRIKE AND AT DEPTH / 开采简单 – 矿化结构容易理解 – 沿走向和向深处开放

Bethania Target Block (Victoria Vein) / Bethania靶区 (Victoria 矿脉)



- Drifting exploration/production adits from several adits on east and west side / 从东边和西边的几个入口进行巷道勘探/生产
- Swarm of high-grade veins trending NE-SW / 呈东北-西南方向的高品位矿脉群
- Mined by overhand cut and fill
- 6 veins – source of historical production / 通过手工切割和填充的方式开采6条矿脉 - 历史产量的来源

Bethania historically produced >400,000 oz/yr silver equivalent as a toll-treatment mining operation prior to 2016 / 在2016年之前, Bethania 作为一个收费加工的采矿业务, 历史上的产量超过40万盎司/年的银当量

LOW-RISK EXPLORATION / 低风险勘探

Bethania Mine Long Section / Bethania矿纵切面图

20 sub-parallel veins / 20条次平行矿脉
Bethania Main Zone / Bethania主区域

Drill sample / 钻探样品
24.2 oz/t Ag over 2.60 m
(31.0 oz/t Ag eq.) / 银品位
24.2盎司/吨的2.60米矿段
(31.0盎司白银 当量/吨)

Vein sample / 矿脉样品
43.9 oz/t Ag over
1.10 m (67.0 oz/t Ag
eq.) / 银品位43.9盎司
/吨的1.10米矿段
(67.0盎司白银 当量
/吨)

Drill sample / 钻探样品
24.6 oz/t Ag over 1.60
m (36.2 oz/t Ag eq.) / 银
品位24.6盎司/吨的1.60
米矿段 (36.2盎司白银
当量/吨)

**New Discovery (Drill)
/ 新发现 (钻探)**
8.1 oz/t Ag over 2.33
m (13.2 oz/t Ag eq.) /
银品位8.1盎司/吨的
2.33米矿段 (13.2盎司
白银 当量/吨)

Vein sample / 矿脉样品
180 oz/t Ag over 0.95
m (207 oz/t Ag eq.) /
银品位180盎司/吨的
0.95米矿段 (207盎司
白银 当量/吨)

Vein sample / 矿脉样品
52.3 oz/t Ag over
0.50m (76.9 oz/t Ag
eq.) / 银品位52.3盎司/
吨的0.50米矿段 (76.9
盎司白银 当量/吨)

Samantha Vein / Samantha矿脉

Española 2: Historic
Workings (no
resource) / 历史矿内
巷道 (无资源量)

Hilltop Zone / Hilltop区

Daniela Vein / Daniela矿脉
Mercedes Vein /
Mercedes矿脉

**Santa Elena: Vein
Sample / 矿脉样品**
91.1 oz/t Ag, 5.20 g/t Au
(110.7 oz/t Ag eq.) / 银品
位91.1盎司/吨, 黄金品位
5.2克/吨 (110.7盎司白银
当量/吨)

Vein Sample / 矿脉样品
8.3 oz/t Ag, 2.84% Pb
(10.5 oz/t Ag eq.) / 银品位
8.3盎司/吨, 铅品位2.84%
(10.5盎司白银 当量/吨)

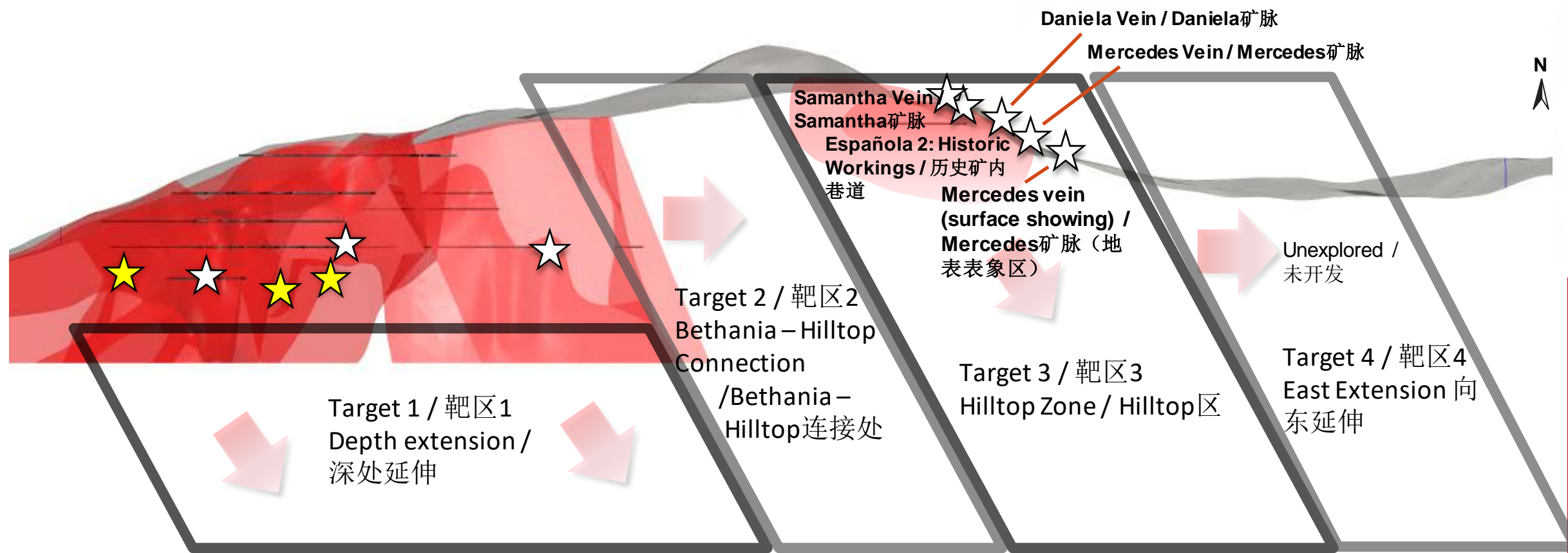
Open / 开放

Unexplored / 未开发

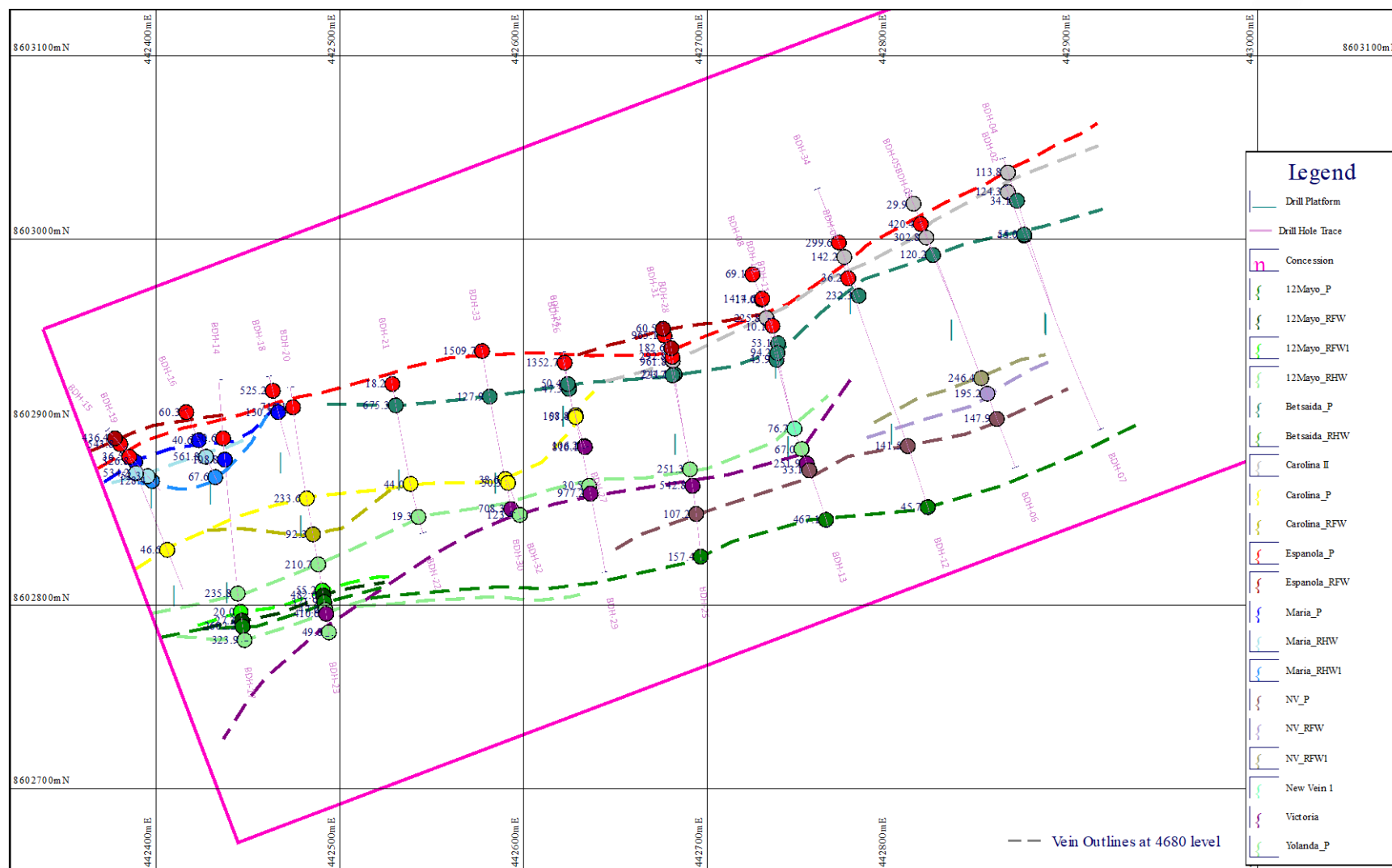
0 250m
Scale bar

LOW-RISK EXPLORATION / 低风险勘探

Bethania Mine Target Sections / Bethania矿靶区切面



PHASE 1 DRILLING: PLAN VIEW MAP / 一期钻探：平面图



While historical mining focused on only six veins, Kuya's phase 1 drill program **identified 20 distinct mineralized veins** in the immediate Bethania mine area. / 虽然历史上的开采只集中在六个矿脉上，但Kuya的一期钻探活动在紧邻的Bethania矿区发现了**20个不同的矿化矿脉**。

In several areas Kuya intersected thicker vein widths than recognized in underground workings, up to 6.7 metres of core length in the Espanola vein at depth. / 在几个区域，Kuya发现了比地下工作面所确认的更厚的矿脉宽度，在Espanola矿脉深处，岩芯长度达6.7米



Notes:

Notes:

Scale

1 : 20000

Plot Date

22-Jul-2021

Sheet

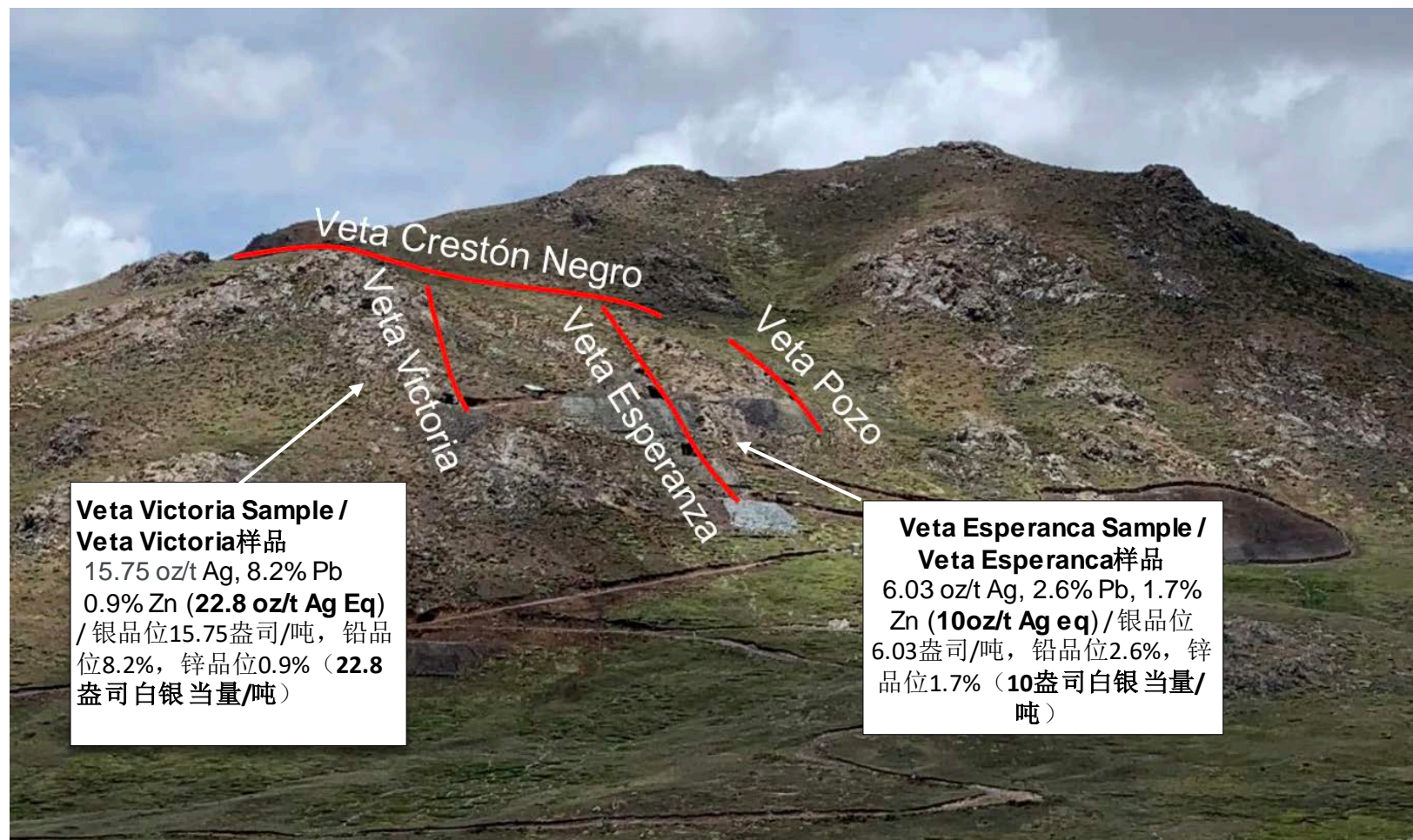
1 of 1

Plot File: Plan.PR

Plan View (4680 m)

Bethania Project

GROWTH POTENTIAL / 增长潜力 - CARMELITA



Veta Victoria Sample / Veta Victoria样品
15.75 oz/t Ag, 8.2% Pb
0.9% Zn (**22.8 oz/t Ag Eq**)
/ 银品位15.75盎司/吨, 铅品位8.2%, 锌品位0.9% (**22.8盎司白银当量/吨**)

Veta Esperanza Sample / Veta Esperanza样品
6.03 oz/t Ag, 2.6% Pb, 1.7% Zn (**10oz/t Ag eq**) / 银品位6.03盎司/吨, 铅品位2.6%, 锌品位1.7% (**10盎司白银当量/吨**)

Carmelita Property Bethania District / Carmelita项目 区Bethania区域

800 Hectare property strategically located ~3km from the Bethania Mine. / 800公顷的项目区, 地位于距Bethania矿约3公里处

- Potential strike extension to high – grade silver-polymetallic vein system at Bethania / 潜在走向延伸至Bethania的高品位银多金属矿脉系统
- Kuya geologists observed 5 veins outcropping on surface and took several samples (see image) of near – surface vein system. / Kuya地质学家在地表发现5条矿脉露头, 并采集了近地表矿脉系统的几个样品 (见图片)。
 - System can be traced over 1 km in strike length / 系统的走向长度可超过1公里
 - A potential satellite deposit / 一个潜在的卫星矿床

SOCIAL RESPONSIBILITY / 社会责任

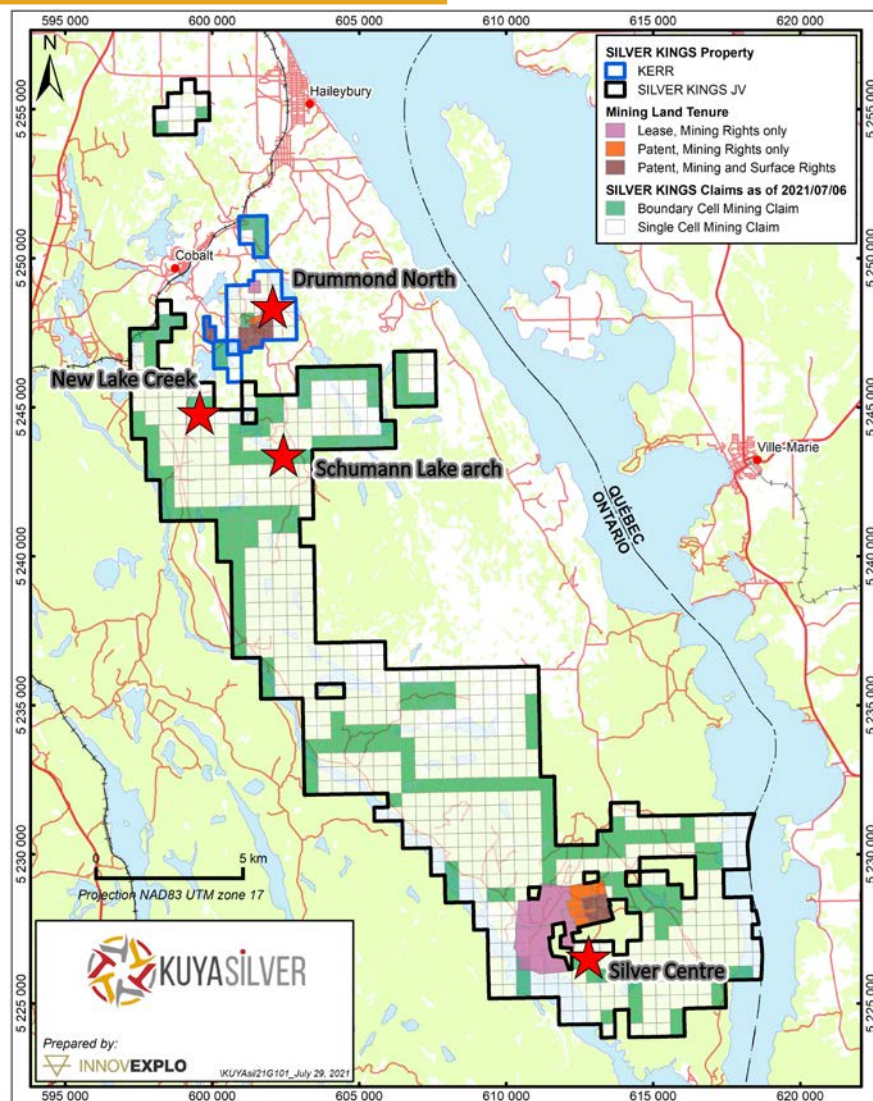
Kuya Silver is actively engaged in building on a strong legacy of working cooperatively with the local Poroche community to develop a mutually beneficial, safe and sustainable mining business in the region / Kuya Silver正积极致力于在与当地Poroche社区合作的强大传统基础上，在该地区发展互惠互利、安全和可持续的采矿业务

The Company is committed to: / 本公司致力于:

1. Providing a safe and sustainable work environment by implementing **new COVID-19 protocols** / 通过实施新的**COVID-19**协议，提供一个安全和可持续的工作环境
2. Providing jobs to people from local communities / 为当地社区的人提供就业机会
3. Meeting all environmental and governmental regulations / 满足所有环境和政府法规
4. Operating under the highest ethical standards / 按照最高的道德标准运营



INTRODUCING THE SILVER KINGS PROPERTY / 介绍SILVER KINGS项目区



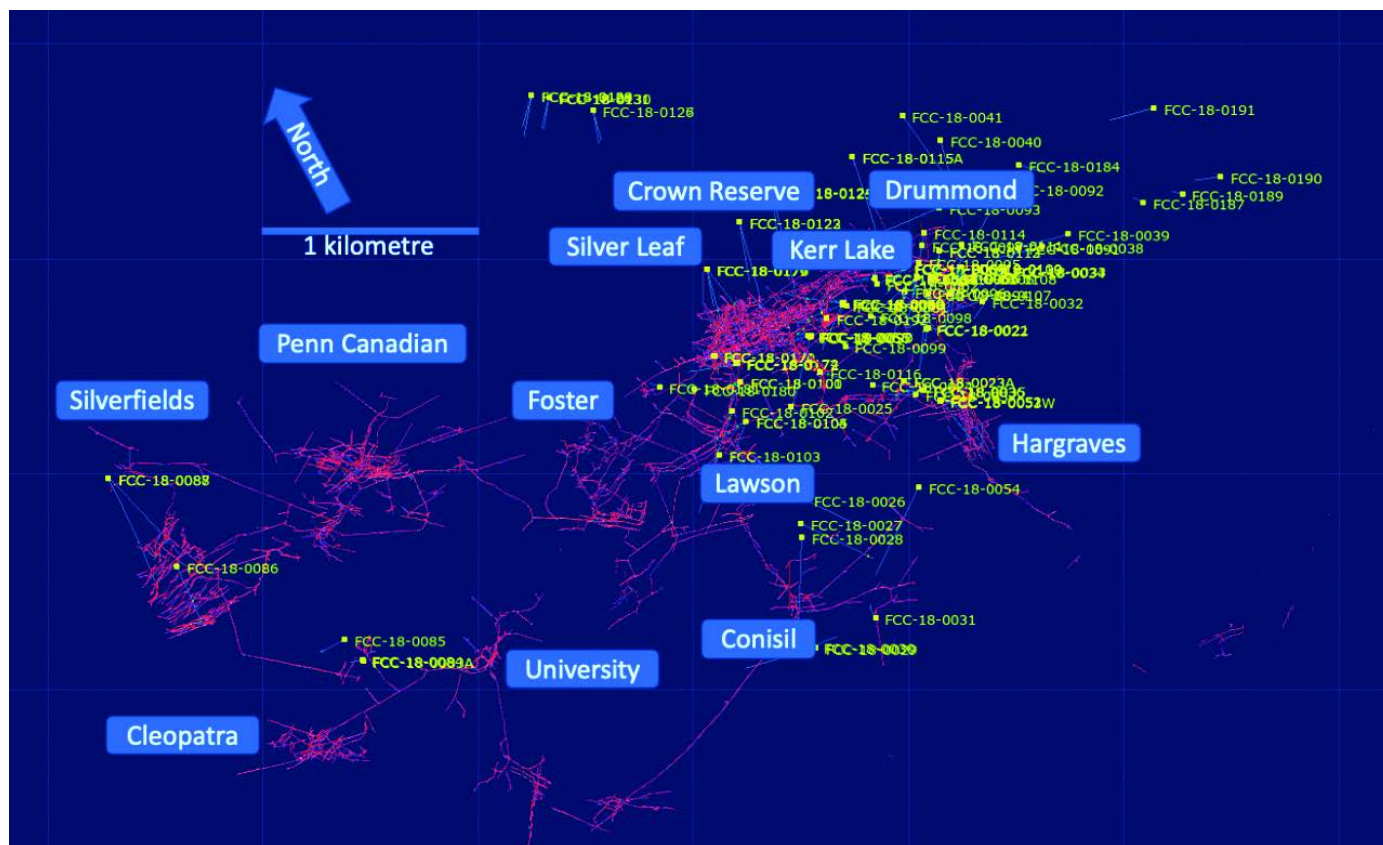
In March 2021, Kuya completed a transaction with First Cobalt Corp. to acquire 100% of the Kerr Project and an option to enter a joint venture to earn up to 70% of its remaining Cobalt area claims. The combined property area is now known as the Silver Kings Project. / 2021年3月，Kuya与First Cobalt Corp.完成了一项交易，收购了Kerr项目的100%股权，并有选择权成立一家合资企业，可以获得其剩余的Cobalt地区的70%权益。合并后的项目区现在名为Silver Kings项目

Silver Kings Project / Silver Kings项目

- The 10,000-hectare land package in NE Ontario is located within the historic Cobalt, Ontario silver mining district / 位于安大略省东北部的10,000公顷土地位于历史上安大略省Cobalt银矿区内
- Previous operator identified several bonanza-style silver intercepts while exploring for cobalt at Kerr. / 以前的运营商在Kerr勘探钴的时候发现了几个富矿式的白银矿段。
 - 2,500m drilling program is planned to follow up and extend high-grade zones. / 计划进行2500米的钻探活动，以跟进和扩展高品位区
- Project offers both near-term production potential at Kerr and district-scale opportunity at the underexplored Silver Kings JV. / 该项目既提供了在Kerr的近期生产潜力，也提供了未开发的Silver Kings合资项目的区域规模机会。
- Kuya exercised the Silver Kings joint venture to earn up to 70% in September, 2021 / Kuya在2021年9月行使了Silver Kings合资企业的权利，最多可获得70%的权益

THE KERR PROPERTY AT SILVER KINGS / 位于SILVER KINGS的KERR项目区

A World – Class Silver District / 世界级的白银地区



The Kerr Property at Silver Kings / 位于SILVER KINGS的KERR项目区

Property Includes eight historic silver mines (Crown Reserve, Silver Leaf, Kerr Lake, Drummond, Hargrave, Silverfields and others.) on a contiguous 900-hectare area. / 该项目区包括八个历史的银矿

(Crown Reserve、Silver Leaf、Kerr Lake、Drummond、Hargrave、Silverfields和其他)，位于900公顷的连片区域

- Mines produced over 50 million ounces of silver between 1905 to 1950. / 在1905年至1950年间，矿山生产了超过5000万盎司的白银
- The deepest shaft was less than 200 metres deep. / 最深的竖井不到200米深。
- System remains untested at depth / 系统的深度仍未进行测试

Intercepts from 2017 – 2018 First Cobalt drill campaign include: / 2017-2018 First Cobalt钻探活动见到的矿段包括:

FCC-18-0058: From 29.4 m, **intersected 3.57 m of 821 g/t Ag** / 自29.4米，见金品位**821克/吨的3.57米矿段**

FCC-18-0093: From 172.1 m, **intersected 2.2 m of 515* g/t Ag** / 自172.1米，见金品位**515克*/吨的2.2米矿段**

FC-18-0094: From 20.0 m, **intersected 2.0 m of 450* g/t Ag** / 自20.0米，见金品位**450*克/吨的2.0米矿段**

FCC-18-0174: From 66.0 m, **intersected 2.5 m of 1441 g/t Ag** / 自66.0米，见金品位**1441克/吨的2.5米矿段**

*Individual silver assays capped at 1500 g/t included in reported intersection / *报告的矿段中包含了以1500克/吨为上限的个别白银分析结果

MANAGEMENT & TEAM

David Stein, MSc (Geo), CFA – President and CEO, Director

Mr. Stein founded Kuya Silver in 2017 to acquire the Bethania Silver Mine and develop the next silver mining company. Mr. Stein has spent most of his 20-year career in mining investments, first as a sell-side analyst and more recently as an investment manager.

Christian Aramayo, MSc (Eng), CEng – Chief Operating Officer

Mr. Aramayo is a UK-educated Peruvian engineer, previously worked on global projects for Kinross before starting his own mining consultancy. He founded SIGC Consultants in Lima, and Kuya has access to Mr. Aramayo and his team for engineering and planning as well as access to a deep network in South America.

Annie Sismanian – Chief Financial Officer

Ms. Sismanian is a chartered professional accountant (CPA, CA) with over 18 years of broad progressive experience in finance, strategy and corporate development. Prior to joining Kuya, she was vice-president of corporate finance and investor relations at Guyana Gold and has held senior financial roles at Hydro One, Kinross, Barrick, Fairmont and PWC.

Tyson King – VP Corporate Development

Mr. King has over 10 years experience in the management of publicly trading and privately held companies within the commodities and natural resources sector. He has been actively engaged in overseeing the day-to-day operations of several companies where he's held various senior officer positions throughout his career. Mr. King holds a BA in Economics from the University of Calgary.

Maura Lendon – Interim Chair & Director

Ms. Lendon, is a seasoned, internationally-experienced general counsel with over 20 years' experience in the mining and telecom industries gained after initially practicing with top Bay Street law firms. Ms. Lendon is the founder and Chief General Counsel of Scalable General Counsel, providing general counsel services to growing companies since 2019, and is currently a director of Eastmain Resources Inc. Previously, she was Chief General Counsel and Corporate Secretary of Primero Mining from 2012 to 2018.

Andres Recalde – Director

Mr. Recalde is the Director of Mining for Common Good. His expertise is with social performance and building stakeholder confidence for the extractive industries. Mr. Recalde is Peruvian/Canadian and has worked extensively all over Latin America as a consultant, advisor and corporate director to mining companies such as Barrick Gold, Pan American Silver and Torex Gold.

Dale Peniuk – Director

Mr. Peniuk is a Chartered Professional Accountant (CPA, CA) and corporate director. Mr. Peniuk has a B.Comm from the University of British Columbia (1982) and received his Chartered Accountant designation from the Institute of Chartered Accountants of British Columbia. Mr. Peniuk also serves as a director and Audit Committee Chair of Lundin Mining Corporation, Capstone Mining Corp. and Argonaut Gold Inc

ADVISORY TEAM

Dr. Quinton Hennigh – Geologic Advisor

Dr. Hennigh is an economic geologist with more than 25 years of exploration experience with major gold mining firms, including Homestake Mining, Newcrest Mining and Newmont Mining. Currently, Dr. Hennigh is President and Chairman of Novo Resources Corp and serves as a director for Irving Resources Inc., TriStar Gold Inc., Precipitate Gold Corp and NV Gold Corp.

Erika Soria – Logistics/Business Development

Ms. Soria manages the commercial and administrative affairs of the Bethania mine and is the liaison with the local community. She is also well-connected in the Peruvian mining community and sources new opportunities for Kuya.

Hector Aramayo – Strategic Advisor

Mr. Aramayo, based in Lima, Peru, is an experienced civil engineer, consultant and project manager with experience in retail and industrial construction in Latin America. He is the Founder of SICG SAC, a construction contractor and management company that over the past 20+ years has built blue chip client base in Latin America.

管理层和团队

David Stein, 理学硕士（地质学家），注册金融分析师–总裁、首席执行官、董事
Stein先生于2017年创立了Kuya Silver，以收购Bethania银矿，并发展下一个银矿公司，他20年的职业生涯中大部分时间都在从事矿业投资，首先是作为卖方分析师，最近则是作为投资经理。

Christian Aramayo, 理学硕士（工程师），注册工程师–首席运营官
Aramayo先生是一位在英国接受教育的秘鲁工程师，在开始自己的矿业咨询之前，曾在Kinross的全球项目工作。他在利马成立了SIGC Consultants，Kuya有机会接触到Aramayo先生和他的团队进行工程和规划，并有机会接触到南美深厚的人脉。

Annie Sismanian – 首席财务官
Sismanian女士是一名特许专业会计师（CPA, CA），在财务、战略和企业发展方面拥有超过18年的丰富经验，在加入Kuya之前，曾在Guyana Gold担任企业财务和投资者关系副总裁，并曾在Hydro One、Kinross、Barrick、Fairmont和PWC担任高级财务职务。

Tyson King – 公司发展副总裁
King先生在大宗商品和自然资源领域的上市公司和私营公司的管理方面拥有超过10年的经验，在他的职业生涯中，一直积极参与管理几家公司的日常运营，并在这些公司中担任各种高级管理人员职务。King先生拥有卡尔加里大学的经济学士学位。

Maura Lendon – 临时董事会主席、董事
Lendon女士是一位经验丰富、具有国际经验的法律顾问，最初在海湾街顶级律师事务所执业后，在采矿和电信行业获得了超过20年的经验，是Scalable General Counsel的创始人和首席法律顾问，自2019年以来为成长型公司提供法律顾问服务，目前是Eastmain Resources Inc.的董事，此前在2012年至2018年期间担任Primer Mining的首席法律顾问和公司秘书。

Andres Recalde – 董事

Recalde先生是“采矿业共同利益”的主任，擅长社会效益和建立利益相关者对采掘业的信心。Recalde先生是秘鲁/加拿大人，曾在拉丁美洲各地担任顾问、咨询师和公司董事，为Barrick Gold、Pan American Silver和Torex Gold等矿业公司工作。

Dale Peniuk – 董事

Peniuk先生是一名特许专业会计师（CPA, CA）和公司董事，还担任Lundin Mining Corporation、Capstone Mining Corp.和Argonaut Gold Inc的董事和审计委员会主席，拥有卑诗大学的商学学士学位（1982年），并获得卑诗省特许会计师协会的特许会计师资格。

顾问团队

Quinton Hennigh博士–地质顾问

Hennigh博士是一位经济地质学家，有超过25年在大型黄金公司的勘探经验，包括Homestake Mining、Newcrest Mining和Newmont Mining，目前是Novo Resources Corp的联席董事会主席，并担任Crescat Capital LLC的地质和技术总监。

Erika Soria – 后勤/业务开发顾问

Soria女士负责管理Bethania矿的商业和行政事务，并且是与当地社区的联络人，在秘鲁矿业界也有很好的人脉关系，为Kuya寻找新的机会。

Hector Aramayo – 战略顾问

Aramayo先生常驻秘鲁利马，是一位经验丰富的土木工程师、顾问和项目经理，在拉丁美洲的零售和工业建设方面有丰富的经验。他是SIGC SAC的创始人。SIGC SAC是一家建筑承包商和管理公司，在过去的20多年里，在拉丁美洲建立了蓝筹客户群。



217 Queen Street, Suite 401
Toronto, Ontario, Canada
M5V 0R2



www.kuyasilver.com



@KuyaSilver



KuyaSilverCorp



Follow Kuya Silver



Kuya-Silver

PHASE 1 DRILLING HIGHLIGHTS – MAIN BETHANIA ZONE

Hole ID	From (m)	To (m)	Width (m)	Ag (g/t)	Au (g/t)	Cu (%)	Pb (%)	Zn (%)	Ag eq (g/t)	Ag eq g*m	Comments
BDH-03	191.45	192.95	1.50	192.44	0.72	0.04	0.48	0.61	279.70	419.56	Española
incl.	192.75	192.95	0.20	1,325.00	2.51	0.21	3.10	2.98	1,702.58	340.52	
BDH-10	123.22	124.65	1.43	749.00	0.63	0.38	2.58	2.47	987.12	1,411.58	Española (end of hole)
BDH-15	56.55	57.70	1.15	203.02	0.14	0.14	2.59	5.16	472.29	543.14	Española
incl.	56.80	57.30	0.50	394.00	0.16	0.27	4.53	9.79	889.11	444.55	
BDH-15	64.35	65.40	1.05	257.62	0.18	0.39	1.81	1.61	414.93	435.68	Española Branch (New vein)
incl.	64.55	65.00	0.45	580.00	0.32	0.86	3.88	3.17	908.34	408.75	
BDH-16	27.90	29.15	1.25	267.24	0.14	0.07	3.68	1.83	444.49	555.61	Maria Branch (New vein)
incl.	27.90	28.10	0.20	1,613.00	0.27	0.44	20.00	7.54	2,464.45	492.89	(Pb capped at 20%)
BDH-17	42.90	45.50	2.60	751.88	0.31	0.17	5.24	1.91	994.71	2,586.24	12 de Mayo
incl.	42.90	43.30	0.40	3,994.00	0.86	0.92	20.00	8.52	4,972.62	1,989.05	(Pb capped at 20%)
BDH-18	57.75	58.50	0.75	385.67	0.46	0.44	4.15	3.63	699.21	524.40	Española
BDH-19	101.50	102.15	0.65	397.00	0.21	0.13	10.87	3.19	820.67	533.43	Maria Branch (New vein)
BDH-20	97.05	97.9	0.85	523.61	0.60	0.46	5.39	2.43	839.89	713.90	Española
incl.	97.05	97.50	0.45	927.00	1.01	0.82	10.05	4.32	1,498.98	674.54	
BDH-21	81.00	83.85	2.85	207.12	0.07	0.02	0.72	0.11	236.36	673.64	Betsaida (New vein)
incl.	83.00	83.85	0.85	438.00	0.10	0.04	2.35	0.14	515.83	438.45	
BDH-23	76.50	77.40	0.90	241.93	0.20	0.11	0.88	1.95	356.96	321.27	12 de Mayo
incl.	77.10	77.40	0.30	612.00	0.27	0.29	2.23	5.58	911.52	273.46	
BDH-24	106.35	107.55	1.20	765.48	0.64	0.23	8.88	1.72	1,127.21	1,352.65	Española
incl.	106.35	106.80	0.45	1,818.00	0.86	0.52	20.00	3.32	2,573.94	1,158.27	(Pb capped at 20%)
BDH-25	60.85	62.40	1.55	155.91	0.63	0.20	2.32	1.97	349.77	542.15	Victoria
incl.	61.30	61.90	0.60	359.00	1.10	0.44	5.35	4.10	763.99	458.40	
BDH-27	126.50	130.15	3.65	179.63	0.18	0.13	1.11	0.36	248.04	905.33	Victoria/Yolanda
incl.	129.20	130.15	0.95	640.63	0.31	0.40	2.37	1.02	803.16	763.00	
BDH-28	118.52	120.85	2.33	253.17	1.12	0.10	1.57	0.89	412.08	960.14	Carolina II (New vein)
incl.	119.40	120.85	1.45	373.00	1.41	0.14	2.10	1.10	578.06	838.19	
BDH-28	123.80	125.15	1.35	109.61	0.54	0.03	0.66	1.02	201.71	272.30	Española
incl.	124.95	125.15	0.20	710.00	3.20	0.14	4.36	6.55	1,282.33	256.47	
BDH-29	87.95	89.40	1.45	332.77	1.73	0.57	3.29	2.11	673.00	975.84	Victoria
incl.	88.38	88.70	0.32	1,209.00	6.33	1.77	9.51	5.02	2,257.41	722.37	
BDH-30	95.90	97.40	1.50	225.08	1.24	0.69	1.32	1.48	471.58	707.37	Victoria
BDH-31	93.20	95.20	2.00	238.00	1.55	0.57	1.24	1.25	481.90	963.81	Española
BDH-33	122.55	129.27	6.72	121.22	0.38	0.06	1.98	0.47	222.56	1,495.61	Española
incl.	128.25	128.70	0.45	696.00	0.76	0.04	20.00	0.74	1,304.30	586.94	(Pb capped at 20%)

一期钻探亮点： BETHANIA主区

钻孔号	自 (米)	至 (米)	间隔 (米)	白银 (克/吨)	黄金 (克/吨)	铜 (%)	铅 (%)	锌 (%)	银当量 (克/吨)	银当量 克*米	评论
BDH-03	191.45	192.95	1.50	192.44	0.72	0.04	0.48	0.61	279.70	419.56	Española
包含	192.75	192.95	0.20	1,325.00	2.51	0.21	3.10	2.98	1,702.58	340.52	
BDH-10	123.22	124.65	1.43	749.00	0.63	0.38	2.58	2.47	987.12	1,411.58	Española (钻孔尾部)
BDH-15	56.55	57.70	1.15	203.02	0.14	0.14	2.59	5.16	472.29	543.14	Española
包含	56.80	57.30	0.50	394.00	0.16	0.27	4.53	9.79	889.11	444.55	
BDH-15	64.35	65.40	1.05	257.62	0.18	0.39	1.81	1.61	414.93	435.68	Española Branch (新矿脉)
包含	64.55	65.00	0.45	580.00	0.32	0.86	3.88	3.17	908.34	408.75	
BDH-16	27.90	29.15	1.25	267.24	0.14	0.07	3.68	1.83	444.49	555.61	Maria Branch (新矿脉)
包含	27.90	28.10	0.20	1,613.00	0.27	0.44	20.00	7.54	2,464.45	492.89	(铅上限20%)
BDH-17	42.90	45.50	2.60	751.88	0.31	0.17	5.24	1.91	994.71	2,586.24	12 de Mayo
包含	42.90	43.30	0.40	3,994.00	0.86	0.92	20.00	8.52	4,972.62	1,989.05	(铅上限20%)
BDH-18	57.75	58.50	0.75	385.67	0.46	0.44	4.15	3.63	699.21	524.40	Española
BDH-19	101.50	102.15	0.65	397.00	0.21	0.13	10.87	3.19	820.67	533.43	Maria Branch (新矿脉)
BDH-20	97.05	97.9	0.85	523.61	0.60	0.46	5.39	2.43	839.89	713.90	Española
包含	97.05	97.50	0.45	927.00	1.01	0.82	10.05	4.32	1,498.98	674.54	
BDH-21	81.00	83.85	2.85	207.12	0.07	0.02	0.72	0.11	236.36	673.64	Betsaida (新矿脉)
包含	83.00	83.85	0.85	438.00	0.10	0.04	2.35	0.14	515.83	438.45	
BDH-23	76.50	77.40	0.90	241.93	0.20	0.11	0.88	1.95	356.96	321.27	12 de Mayo
包含	77.10	77.40	0.30	612.00	0.27	0.29	2.23	5.58	911.52	273.46	
BDH-24	106.35	107.55	1.20	765.48	0.64	0.23	8.88	1.72	1,127.21	1,352.65	Española
包含	106.35	106.80	0.45	1,818.00	0.86	0.52	20.00	3.32	2,573.94	1,158.27	(铅上限20%)
BDH-25	60.85	62.40	1.55	155.91	0.63	0.20	2.32	1.97	349.77	542.15	Victoria
包含	61.30	61.90	0.60	359.00	1.10	0.44	5.35	4.10	763.99	458.40	
BDH-27	126.50	130.15	3.65	179.63	0.18	0.13	1.11	0.36	248.04	905.33	Victoria/Yolanda
包含	129.20	130.15	0.95	640.63	0.31	0.40	2.37	1.02	803.16	763.00	
BDH-28	118.52	120.85	2.33	253.17	1.12	0.10	1.57	0.89	412.08	960.14	Carolina II (新矿脉)
包含	119.40	120.85	1.45	373.00	1.41	0.14	2.10	1.10	578.06	838.19	
BDH-28	123.80	125.15	1.35	109.61	0.54	0.03	0.66	1.02	201.71	272.30	Española
包含	124.95	125.15	0.20	710.00	3.20	0.14	4.36	6.55	1,282.33	256.47	
BDH-29	87.95	89.40	1.45	332.77	1.73	0.57	3.29	2.11	673.00	975.84	Victoria
包含	88.38	88.70	0.32	1,209.00	6.33	1.77	9.51	5.02	2,257.41	722.37	
BDH-30	95.90	97.40	1.50	225.08	1.24	0.69	1.32	1.48	471.58	707.37	Victoria
BDH-31	93.20	95.20	2.00	238.00	1.55	0.57	1.24	1.25	481.90	963.81	Española
BDH-33	122.55	129.27	6.72	121.22	0.38	0.06	1.98	0.47	222.56	1,495.61	Española
包含	128.25	128.70	0.45	696.00	0.76	0.04	20.00	0.74	1,304.30	586.94	(铅上限20%)

PHASE 1 DRILLING: BETHANIA MAIN ZONE / 一期钻探: BETHANIA主区

Drilling Confirmed **Significant Silver Endowment** / 钻探确认了**存在大量白银资源**

