



GLOBAL BATTERY METALS



GLOBAL BATTERY METALS

A PORTFOLIO OF BATTERY METALS
EXPLORATION PROJECTS / 电池金属勘探项目
的组合

TSX.V: GBML

OTCQB: REZZF

FSE: REZ

February 2022 /
2022年02月

FORWARD-LOOKING STATEMENTS / 前瞻性陈述

Forward-Looking Information

Except for statements of historical fact, this presentation contains certain “forward-looking information” or “forward-looking statements” within the meaning of applicable Canadian and United States securities legislation. Forward-looking information is frequently characterized by words such as “plan”, “expect”, “project”, “intend”, “believe”, “anticipate”, “estimate” and other similar terms, or statements that certain events or conditions “might”, “may”, “could” or “will” occur. In particular, forward-looking information in this presentation includes, but is not limited to, statements with respect to the future prospects for lithium, lithium batteries and the energy storage market, emergence of electric vehicles and other technologies driving lithium demand, future growth of lithium market, our expectations about the prospects of Leinster and Laura projects, and future plans and objectives of Global Battery Metals Ltd. (the Company”). Forward-looking statements are based on the opinions and estimates of management at the date the statements are made, and are subject to a variety of risks, uncertainties and other factors that could cause actual events or results to differ materially from those anticipated in the forward-looking information. Some of the risks and other factors that could cause results to differ materially from those expressed in the forward-looking statements include, but are not limited to: general economic conditions in Canada, the United States and globally; industry conditions, including the state of the electric vehicle market; governmental regulation of the mining industry, including environmental regulation; geological, technical and drilling problems; unanticipated operating events; competition for and/or inability to retain drilling rigs and other services; the availability of capital on acceptable terms; the need to obtain required approvals from regulatory authorities; stock market volatility; volatility in market prices for commodities; liabilities inherent in the mining industry; the future developments of the COVID-19 global pandemic; changes in tax laws relating to the mining industry; and the other factors in our public filings available at www.sedar.com. Readers are cautioned that this list of risk factors should not be construed as exhaustive. The forward-looking information contained in this presentation is expressly qualified by this cautionary statement. We undertake no duty to update any of the forward-looking information to conform such information to actual results or to changes in our expectations, except as otherwise required by applicable securities legislation. Readers are cautioned not to place undue reliance on forward-looking information.

Certain Other Information

Certain information in this presentation was obtained from third party sources, including public sources, and there can be no assurance as to the accuracy or completeness of such information. Although believed to be reliable, management of the Company has not independently verified any of the data from third party sources unless otherwise stated.

Technical Information

All other scientific and technical information in this presentation has been reviewed and approved by Vaughan Williams M.Sc. Eur.Geol, P.Geo, who is a qualified person under National Instrument 43-101 and who is not independent of the Company as he is a Director of a related party (LRH Resources Limited the JV partner to the project).

All information contained in this presentation is subject to the more detailed and complete information contained in the Company’s continuous disclosure documents available at www.sedar.com.

OPPORTUNITY / 机会

Global Battery Metals is powering the Green Revolution with a growth-oriented portfolio of battery metals projects. / Global Battery Metals正通过一个以增长为导向的电池金属项目组合为绿色革命提供动力。

World-Class Expertise / 世界级的技术



Global Battery Metals hosts an expert team with a history of creating shareholder value in several successful mining companies. / Global Battery Metals拥有一支专家团队，他们曾在多家成功的矿业公司中为股东创造价值。

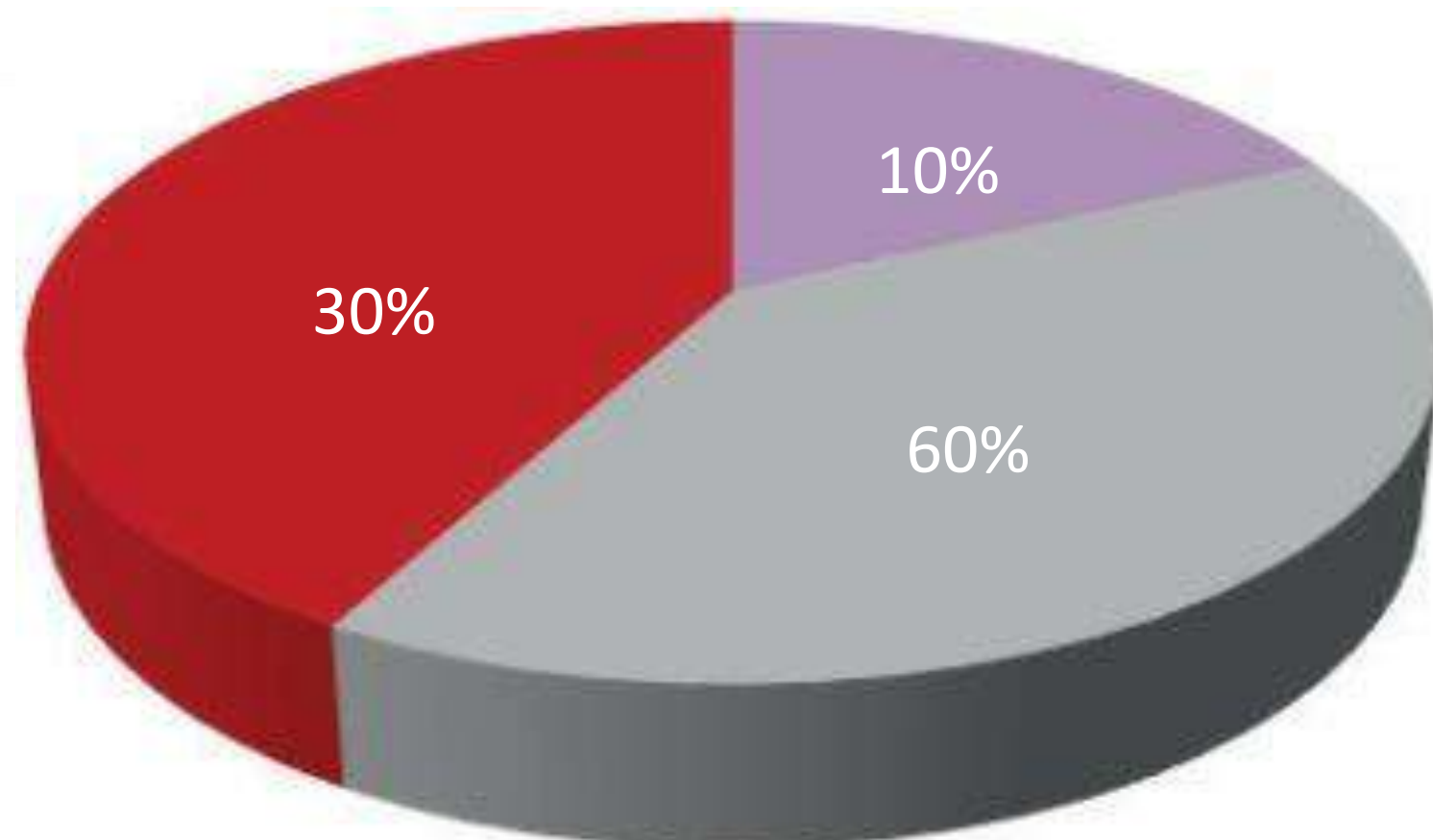


The Board of Directors and Management offer a diverse set of skills and experience in financing, geology, engineering, mining exploration, development, and production. / 董事会和管理层在融资、地质、工程、矿业勘探、开发和生产方面拥有多元化的技能和经验。

CAPITAL STRUCTURE /

资本结构

Ownership / 所有权



MANAGEMENT/DIRECTORS / 管理层/董事

RETAIL / 个人

INSTITUTIONS/LONG TERM SHAREHOLDERS / 机构/长期股东

Corporate Share Structure / 股权结构

Common shares issued and outstanding: / 已发行普通股:	55,676,989
Warrants: / 认股权证:	
Expiring November 10, 2022 @ \$0.15 / 2022年11月10日到期, 行权价 \$0.15	7,356,100
Expiring November 10, 2022 @ \$0.10* / 2022年11月10日到期, 行权价 \$0.10	65,200
<i>* these are exercisable into one common share and one additional warrant exercisable at \$0.15 / 这些可行权为一股普通股和行权价为\$0.15的一份认股权证</i>	
Expiring February 8, 2023 @ \$0.18 / 2023年2月8日到期, 行权价 \$0.18	1,416,667
Total Warrants: / 认股权证总额	8,837,967
Stock Options: / 股票期权	
Expiring February 24, 2022, @ \$0.18 / 2022年2月24日到期, 行权价 \$0.18	225,000
Expiring November 30, 2022, @ \$0.14 / 2022年11月30日到期, 行权价 \$0.14	300,000
Expiring May 30, 2023 @ \$0.20 / 2023年5月30日到期, 行权价 \$0.20	700,000
Expiring November 26, 2023 @ \$0.09 / 2023年11月26日到期, 行权价 \$0.09	15,000
Expiring September 27, 2025 @ \$0.10 / 2025年9月27日到期, 行权价 \$0.10	485,000
Expiring April 7, 2026 @ \$0.37 / 2026年4月7日到期, 行权价 \$0.37	2,675,000
Total Stock Options: / 股票期权总额:	4,400,000

MANAGEMENT AND DIRECTORS / 管理层和董事

Michael Murphy, BA, MBA, MSc., ICD | President, CEO, Director / 文学士、工商管理硕士, ICD | 总裁、首席执行官、董事

Prior to joining Global Battery Metals Ltd., Mr. Murphy is the founder of Torex Gold (TXG-T) a billion dollar plus market cap gold producer. He recently stepped down from the board after 12 years and participating in the raising of over one billion dollars of debt and equity. Prior to Torex, Mr. Murphy spent 15 years in London in the financial services sector, with Merrill Lynch, DLJ and Credit Suisse. / 在加入Global Battery Metals Ltd.之前, Murphy先生是一家市值超过\$10亿的黄金生产商Torex Gold (TXG-T)的创始人, 经过12年的时间, 最近从董事会卸任, 参与了超过\$10亿的债权融资和股权融资。在加入Torex之前, Murphy先生在伦敦的金融服务部门工作了15年, 曾在美林证券、DLJ和瑞士信贷工作。

Gary Brown, CPA, CFA | Director / 注册会计师、注册金融分析师 | 董事

Since June 2008, Mr. Brown has served as the Senior Vice President and Chief Financial Officer of Wheaton Precious Metals. Prior to Wheaton Precious Metals, he was the Chief Financial Officer of TIR Systems Ltd. (from September 2005 to July 2007). He has also held senior financial advisory roles with CAE Inc., Westcoast Energy Inc., and Creo Inc. Mr. Brown brings over 30 years of experience as a finance professional. He holds professional designations as a Chartered Professional Accountant and a Chartered Financial Analyst, and earned a Master's Degree in Accounting from the University of Waterloo. / Brown先生自2008年6月以来一直担任Wheaton Precious Metals的高级副总裁兼首席财务官, 在加入Wheaton Precious Metals之前, 曾任TIR Systems Ltd.的首席财务官(2005年9月至2007年7月), 还曾在CAE Inc.、Westcoast Energy Inc.和Creo Inc.担任高级财务顾问。Brown先生拥有超过30年的金融专业经验, 拥有注册会计师和注册金融分析师的专业资格, 在滑铁卢大学获得了会计学硕士学位。

Rebecca Moriarty, CPA, CA, BSc. (Geology) | CFO / 注册会计师、理学学士(地质学) | 首席财务官

Ms. Moriarty supports clients in the natural resources sector. After working as a mineralogist for 18 months, she obtained her accounting credits—offering clients a unique combination of field knowledge and business accounting expertise. During her 11 years at PwC she worked exclusively with resource companies. / Moriarty女士为自然资源领域的客户提供支持, 在作为矿物学家工作了18个月, 她获得了会计资格—既能够为客户提供现场知识, 也能提供商业会计技能。在普华永道的11年里, 她专门为资源公司服务。

Craig Roberts, BSc, P.Eng | Director / 应用科学学士学位、专业工程师 | 董事

Mr Roberts is the CEO of Newfound Gold (NFG-V) and a Director of Ethos Gold (ECC-V). He is a mining engineer with over 30 years of operations, consulting, and investment banking experience. This experience includes work on multiple feasibility studies and investment banking/due diligence roles in over 200 institutional equity financings. Mr. Roberts also has significant experience advising management and boards on merger and acquisition transactions. / Roberts先生是Newfound Gold (NFG-V)的首席执行官和Ethos Gold (ECC-V)的董事, 是一名采矿工程师, 拥有超过30年的运营、咨询和投资银行经验。这些经验包括从事多个可行性研究工作以及在200多个机构股权融资中的从事投资银行/尽职调查工作。Roberts先生还拥有为管理层和董事会提供并购交易咨询的丰富经验。

MANAGEMENT AND DIRECTORS / 管理层和董事

Cameron Bell, MSc., P.Geo. | Director / 理学硕士、专业地质学家 | 董事

Mr. Bell brings over 30 years of experience working as a geologist and exploration manager. He was the Regional Exploration Manager for Vale from 2007 to 2016, serving time as both North American Manager and Australasian Manager. Prior to that, he worked with Inco Technical Services as the North American and European Manager, responsible for their grass roots nickel exploration and generation of projects. Additionally, he held the role of Senior Geologist at Voisey's Bay and Sudbury. / Bell先生拥有超过30年担任地质学家和勘探经理的工作经验，2007年至2016年担任淡水河谷公司的区域勘探经理，担任过北美经理和澳大利亚经理，在此之前曾在Inco Technical Services担任北美和欧洲经理，负责他们的草根镍勘探和项目的生成。此外，他曾在Voisey's Bay和Sudbury担任高级地质学家的职务。

Alan F. Matthews, C.Eng. | Director / 特许工程师 | 董事

Mr. Matthews is a Mining Engineer and a Chartered Engineer with over 45 years of mining and exploration experience in the mineral industry. He has been a Director of the Company (GBML/REZ) since 2006. He is the founder and past director of several successful TSX companies. Mr. Matthews is formerly a Director of International Minerals Corporation, and was the Founder and President and Director of Kernow Resources & Development Ltd.—a mining exploration company. / Matthews先生是一名矿业工程师和特许工程师，在矿产行业有超过45年的采矿和勘探经验，从2006年开始担任本公司（GBML/REZ）的董事，是几家成功的多伦多证券交易所上市公司的创始人和前任董事。Matthews先生曾是International Minerals Corporation的董事，也是矿产勘探公司Kernow Resources & Development Ltd.的创始人、总裁和董事。

Jean-Philippe Paiement, MSc, P.Geo. | Director / 理学硕士、专业地质学家 | 董事

Mr. Paiement brings 15 years of wide-ranging experience in mineral system modelling. He applies his knowledge in Geostatistics (with specializations in non-linear interpolation and simulation) to structural, geological, and geochemical modelling. Before joining Mira Geoscience as Director of Global Consulting, Mr. Paiement was also the scientific driving force behind SGS Geostat's Integra GoldRush Challenge win (through the application of machine learning to mineral deposit targeting). Since then, he has pioneered the application of artificial intelligence to the geoscience sector. / Paiement先生在矿物系统建模方面有15年的丰富经验，将自己在地质统计学方面的知识（擅长非线性插值和模拟）应用于结构、地质和地球化学建模。在加入Mira Geoscience担任全球咨询总监之前，Paiement先生也是SGS Geostat赢得Integra GoldRush挑战赛（通过将机器学习应用于矿床定位）的科学推动者。从那时起，他开创了人工智能在地球科学领域的应用。



NW LEINSTER LITHIUM PROJECT / NW LEINSTER 锂项目

The NW Leinster Lithium Project is a hard rock spodumene-bearing pegmatite project, adjacent to Ganfeng's Avalonia asset, in which the Company has an option to earn up to a 90% interest ([see website for details](#)). / NW Leinster 锂项目是一个硬岩含锂辉石项目，毗邻赣锋锂业的Avalonia 资产，公司有选择权获得高达90%权益（[详见网站](#)）。

Unique Asset Location / 独特的资产位置



The project area is covered by fifteen (15) government-issued prospecting licenses termed the North-west Leinster Block. It covers a total area of 477 km². / 该项目区由政府颁发的15个探矿许可证覆盖，称为North-west Leinster 区块，总面积为477平方公里。



The project is adjacent to Ganfeng's Avalonia asset, which has reported intercepting economic grade* lithium spodumene-bearing pegmatites. / 该项目与赣锋锂业的Avalonia资产相邻，后者已经报告获得了具有经济价值品位*的含锂辉石的伟晶岩。

Recent additional property has been added to the package, which borders Ganfeng to the southeast / 最近又增加了一些项目区，在东南方向与赣锋锂业的资产相邻。



Ganfeng is currently one of the largest lithium companies in the world—producing and selling lithium metals, lithium fluoride, lithium chloride, and other chemical products of lithium. / 赣锋锂业是目前世界上最大的锂业公司之一，生产和销售锂金属、氟化锂、氯化锂和其他锂的化学产品。

*The Aclare deposit (part of International Lithium Corp. -- Ganfeng Lithium Co. Ltd.'s joint venture Avalonia project) reportedly comprises a 20m wide spodumene pegmatite zone with a historical resource estimate of 570,000 tonnes, grading 1.5 percent Li₂O. The strike length of the primary target zone is approximately 550m, with best intersections of 2.23 percent Li₂O over 23.3m, including 3.43 percent Li₂O over 6m (see International Lithium website for more). / *Aclare矿床（International Lithium Corp.与赣锋锂业有限公司的合资项目Avalonia项目的一部分）据称包括20米宽的锂辉石伟晶岩区，其历史资源量预期值为57万吨，氧化锂的品位为1.5%。主要靶区的走向长度约为550米，最佳矿段为氧化锂品位2.23%的23.3米矿段，包括氧化锂品位3.43%的6米矿段（更多信息参见International Lithium网站）。

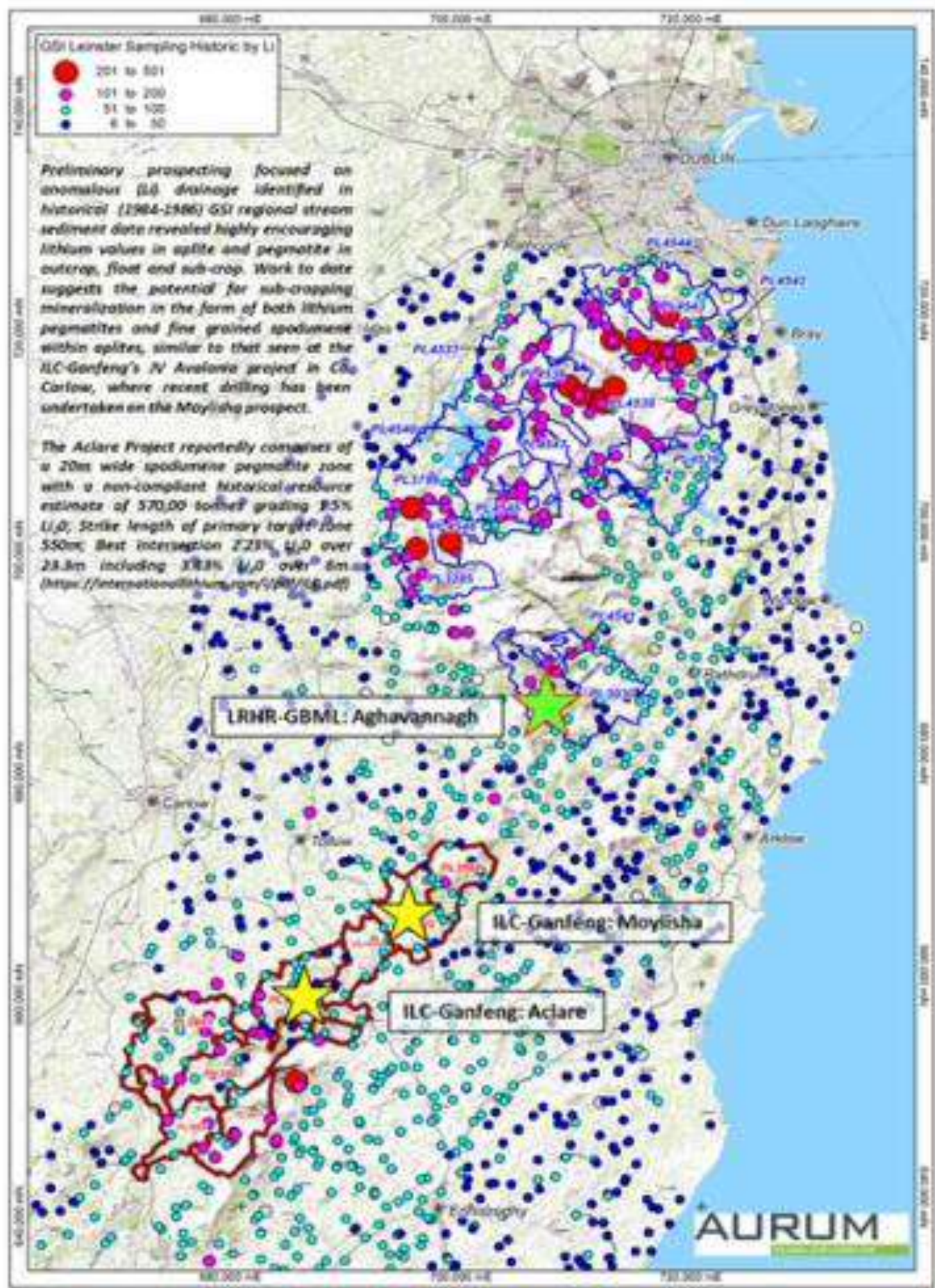
POSITIVE RESULTS / 积极的结果

The NW Leinster Project exploration results are highly encouraging. / NW Leinster项目的勘探结果非常令人鼓舞。

The spodumene-bearing float discovered at Aghavannagh was investigated by the Company using detailed mapping, prospecting, deep overburden geochemical surveys, and a 12.5 line-km ground magnetic survey. / 公司对在Aghavannagh发现的含锂辉石的浮体进行了详细的填图、踏勘、深层覆土地球化学勘查，以及12.5航线公里的地面磁力勘测。

The Government of Ireland previously carried out a regional stream sediment sampling programme. The results showed that—in a regional context—the NW Leinster Project area has comparably higher Li anomalies compared to Ganfeng's adjacent asset to the southwest of the Leinster Massif / 爱尔兰政府之前进行了一项区域性的河流沉积物采样活动。结果显示，在区域范围内，与赣锋锂业在Leinster Massif西南部的相邻资产相比，NW Leinster项目区的锂异常值更高。

The NWL property is outlined in blue / 蓝色线条圈出部分为NWL项目区



WORK COMPLETED / 已完成的工作

Positive results from mapping, prospecting, and deep overburden geochemical surveys have successfully located new, and previously unknown, lithium pegmatite mineralization on the license block. / 通过填图、踏勘和深层覆土地球化学勘测的积极结果，成功地在许可区块上找到了新的和以前未知的锂伟晶岩矿化结构。

These areas are: / 这些区域是:

- **Aghavannagh Prospect: Large angular blocks of spodumene pegmatite (float) returned the maximum value of 8280ppm Li (1.78% Li₂O) in sample AES43343 on PL4541. / Aghavannagh勘探区: 在PL4541的AES43343样品中, 大块尖角锂辉石伟晶岩(浮体)的最高值为8280ppm锂(氧化锂品位1.78%)。**

All three holes at Aghavannagh intersected several different phases of well-developed pegmatite veins, one of phases analysed with the Lithium-Cesium-Tantalum (LCT) geochemical signature which is associated zonally with spodumene bearing lithium pegmatite emplacement. / Aghavannagh的所有三个钻孔都见几个不同相的、发展良好的伟晶岩脉, 其中一个相分析了锂-铯-钽(LCT)地球化学特征, 该特征与含锂辉石伟晶岩的分区有关。

Further encouraging evidence of a lithium bearing fluid system being developed in this area was provided by downhole analytical testing of hole 21-4541-03 using Laser-Induced Breakdown Spectroscopy (LIBS hand-held device) this analysed individual biotite mica crystals within the hosting granite down the length of the core detecting lithium enrichment halos. A total of 51 sample points were analysed with two readings taken at each point between 5.4m and 192.5m depth. Several zones of enrichment were identified with anomalous values ranging between 1,500ppm and 2,500ppm lithium at several intervals within the drill core, indicating that lithium bearing fluids are associated with the broader target zone. / 21-4541-03孔的井下分析测试提供了该地区正在开发的含锂流体系统的进一步令人鼓舞的证据, 该测试使用激光诱导击穿光谱仪(LIBS手持设备)分析了岩芯长度方向上的花岗岩中的单个生物云母晶体, 检测到锂的富集晕。共分析了51个样品点, 在5.4米和192.5米深度之间的每个点都取了两次读数。在钻芯的几个区间, 发现了几个富集区, 其异常值在1,500ppm和2,500ppm锂之间, 表明含锂流体与更广泛的靶区有关。

The three-hole first phase of drilling has advanced the prospect significantly in confirming the presence of LCT signature pegmatites as well as more accurately defining the bedrock geology at Aghavannagh. The drilling has also provided critical vectoring information for advancing the ongoing targeting work at Aghavannagh with plans in place for geological mapping, prospecting & deep overburden sampling. / 一期钻探的三个钻孔确认了LCT特征伟晶岩的存在以及更准确地界定了Aghavannagh的基岩地质, 大幅推进了该前景区。钻探还为推进Aghavannagh正在进行的定向工作提供了关键的定向信息, 并制定了地质填图、勘探和深层覆土采样的计划。

- **Sorrel Prospect: Pegmatite float with 3cm-5cm prismatic spodumene crystals in sample AES34326 on PL4536 returned a value of 7680ppm Li (1.65% Li₂O). / Sorrel前景区: PL4536上的AES34326样品中含有3cm-5cm棱镜状锂辉石晶体的伟晶岩浮体, 其数值为7680ppm锂(1.65% Li₂O)。**
- **Tonygarrow Prospect: Spodumene pegmatite located (0.99% Li₂O). / Tonygarrow前景区: 确定锂辉石伟晶岩的位置(0.99% Li₂O)**
- **Scurlocks Prospect: Aplite float with anomalous lithium (0.65% Li₂O). / Scurlocks前景区: 有异常锂的细晶岩浮体(0.65% Li₂O)**
- **Knocknaboley Prospect: anomalous lithium (820ppm Li) in aplite float on PL4546. / Knocknaboley前景区: 在PL4546的细晶岩内锂含量异常(820ppm锂)**

NWL PROJECT EXPANDED TO INCLUDE

/ NWL项目扩展

A recent historical data review and literature search undertaken by LRH Resources resulted in the identification of six new prospects outside the current NW Leinster block with highly significant spodumene-bearing (lithium) pegmatite boulder concentrations. One of the areas was ground-truthed and float samples collected returned a maximum value of 2.95% Li₂O (Table 2). A previous operator trench log at the site of these new samples recorded a 1.8m spodumene-pegmatite vein, however, no other information, including assays for this time period, are available in the Geological Survey Open File archive. / LRH Resources最近进行的历史数据审查和文献检索，确定了目前NW Leinster区块以外的六个新的前景区，这些区块具有非常显著的含锂辉石（锂）伟晶岩巨石。其中一个区域进行了地面勘察，收集的浮游样品的最高值为2.95%氧化锂（表2）。在这些新样品的地点，以前的操作员沟槽日志记录了一个1.8米的锂辉石伟晶岩矿脉，然而，在地质调查开放文件档案中没有其他信息，包括这个时期的分析结果。

Table 2 – Float Samples from new licence application area PLA 1597 / 来自新的许可申请区PLA 1597 的浮游样品

* Li₂O % = Li ppm % (x 2.153)

An application has been lodged and is currently being processed by the Government for the prospecting licence covering this area, PLA1597, which adjoins immediately south of the Ganfeng-ILC's Avalonia Project, this new licence once finally issued will be operated under the current Agreement between GBML and LRH Resources. / 政府正在处理已经提交的一份关于覆盖该地区的探矿许可证的申请，即PLA1597，该地区紧邻赣锋锂业与ILC合资的Avalonia项目的南部，该新许可证一旦最终颁发，将根据GBML和LRH Resources之间的现有协议进行运营。

Sample / 样品	Li (ppm)	Li ₂ O eq (%)* / 氧化锂当量
210724CL02	3,240	0.70%
210724CL03	11,200	2.41%
210724CL04	11,000	2.37%
210724CL05	13,700	2.95%

NEXT STEPS / 下一步工作

- ▶ Applications have already been initiated with the Irish Government's Exploration and Mining Division (EMD) and Coillte (Irish state-owned forestry company), for exploration work on the new property / 已经启动向爱尔兰政府的勘探与采矿部和Coillte（爱尔兰国有森林公司）申请在新的项目区进行勘探工作

Designing work programs for the original program / 为初始项目设计工作计划



Will re trench the new ground / 将再次在新的区域进行槽探



LITHIUM KING PROJECT / LITHIUM KING项目



Lithium King Property Highlights: / Lithium King项目区亮点:

- Prospective lithium bearing brine aquifer located on the west side of the Great Salt Lake Basin in western Utah. /位于犹他州西部Great Salt Lake盆地西侧的有前景的含锂盐水层。
- The land position consists of approximately 7,900 acres (3,200 hectares) of placer claims. /该土地包括大约7900英亩（3200公顷）的砂矿矿权区。
- Excellent infrastructure: Interstate Highway I-80 runs through the property. /优越的基础设施：I-80号州际公路贯穿该项目区。

- The Lithium Property is located in the Pilot Valley, at the Western margin of the Bonneville Salt Flats. /该锂项目区位于在Bonneville Salt Flats的西部边缘的Pilot Valley。
- Historical surface water sampling from shallow drill holes (0-25 feet) by the USGS between 1972 and 1993 (U.S. Geological Survey Professional Paper 1585) identified anomalous Lithium values ranging from 2 ppm to 1,200ppm*. /美国地质调查局在1972年至1993年期间对浅层钻孔（0-25英尺）进行的历史地表水取样（美国地质调查局专业论文1585）确定了异常的锂值，范围从2ppm到1,200ppm*。
- The Property sits along the Southern extension of an interpreted high Lithium value trend from the surface well samples*. /该项目区位于从地表井样品中解读出的高锂值趋势带的南部延伸地带*。

*Surface water samples may not reflect the basin brine's composition and drilling with brines sampling is needed to confirm the presence of Lithium in the basin brines. /*地表水样品可能无法反映盆地盐水的成分，需要通过钻探盐水采样来确认盆地盐水中是否存在锂。

PLANNED WORK / 计划的工作

In order to assess the Lithium potential of the basin brines on the Lithium Property, the following work will be conducted by GBML: /为了评估该锂项目区的盆地卤水的锂潜力，GBML将进行以下工作：

1

Locate and digitize existing Oil well data to help in the modelling of the basin – COMPLETED. /找到现有的油井数据并将其数字化，以帮助建立盆地模型 - 已完成。

2

Acquisition of public domain geophysical datasets. This will help in improving the subsurface structural and geological model. A depth to basement modelling exercise shall be conducted. The data should include, but is not limited to: /获取公共领域的地球物理数据集。这将有助于改进地下结构和地质模型。应进行深度至基底的建模工作。这些数据应包括，但不限于：

- Gravity / 重力
- Magnetics / 磁性
- Seismic / 地震

3

Exploration mud rotatory drilling with wireline geophysics to evaluate the stratigraphy and basement depth for the Property area – DRILL PERMIT APPLICATION IN PROGRESS. /勘探泥浆旋转钻探与有线地球物理勘测，以评估该项目区的地层和基底深度 – 正在申请钻探许可证。

4

Water sampling of drill holes using in-hole packer equipment to test for Lithium enrichment and deleterious element content of the brine. /使用孔内封隔器设备对钻孔进行水取样，以测试盐水的锂富集度和有害元素含量。

5

Further drilling to test for: /进一步的钻探将用于测试：

- Stratigraphy / 地层
- Brine composition / 盐水成分
- Production metrics / 生产数据

PROSPECTIVE NICKEL/COPPER PROJECTS IN MICHIGAN / 密歇根州有前景的镍/铜项目

We have identified properties which have similar signatures to the Eagle Mine in Michigan. (The Eagle and Eagle East deposits had a proven and probable mineral reserve of 4.8 million tonnes grading 2.8 per cent nickel and 2.4 per cent copper along with credits of cobalt, platinum, palladium and gold (effective Dec. 31, 2016). / 我们已经确定了与密歇根州Eagle矿有类似特征的项目区。(Eagle矿床和Eagle East矿床的探明和基本探明矿产储量为480万吨，镍的品位为2.8%，铜的品位为2.4%，同时还有钴、铂金、钯金和黄金（2016年12月31日生效）。

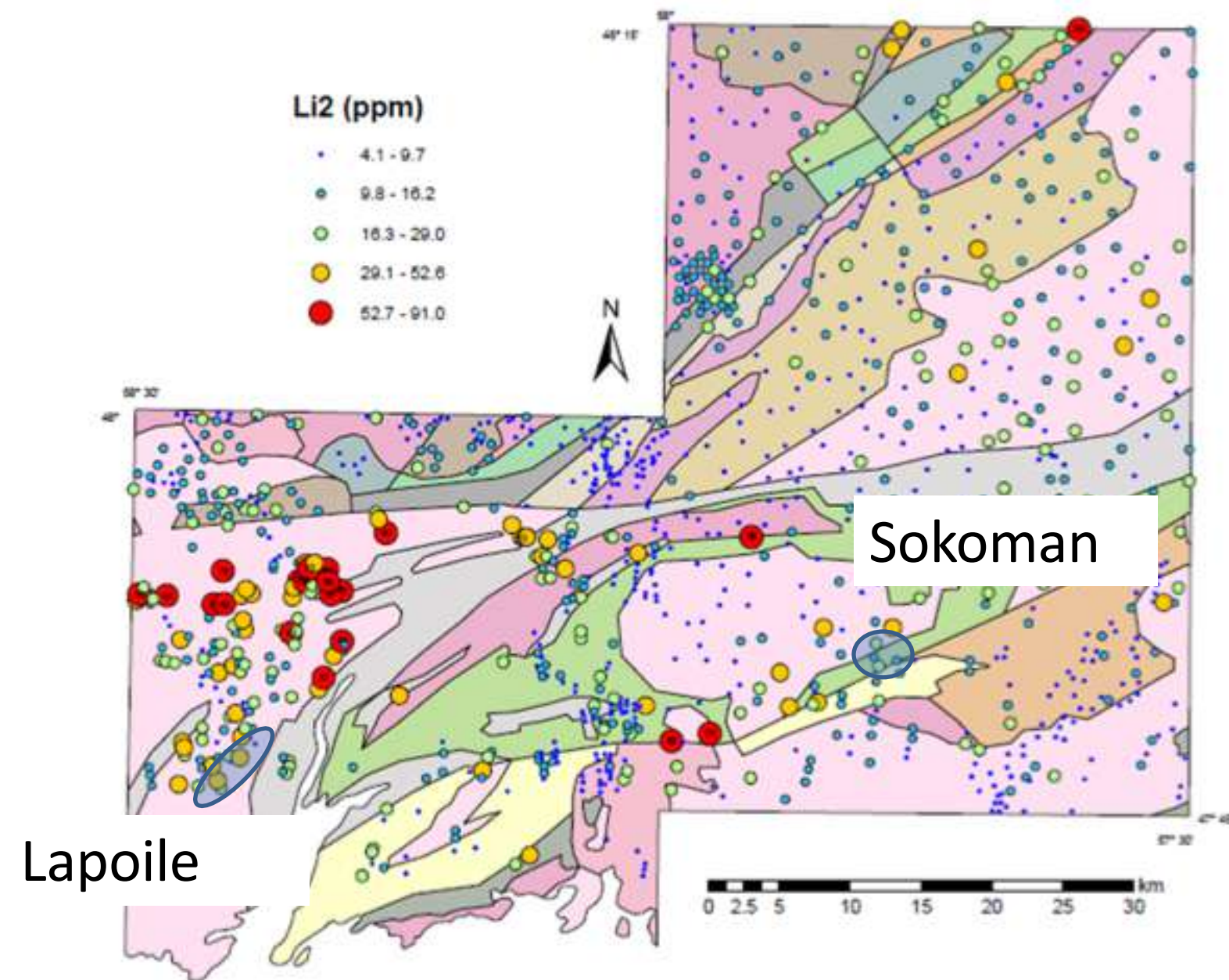
- 1) The Sawyer Camp – after a comprehensive due diligence exercise we are working with the property owners, to make our detailed non binding LOI, binding. / Sawyer Camp - 经过全面的尽职调查，我们正在与项目区拥有者合作，使我们详细的无约束力的意向书具有约束力。
- 2) Additional Properties – working with our local drill contractor, we have identified and applied of state leases over a portfolio of additional Michigan properties which show similar characteristics to the Sawyer Camp and the Eagle Mine. These properties are currently undergoing a public comment period, which we expect to have completed in the next two months. / 其他项目区 - 与我们当地的钻探承包商合作，我们已经确定并申请了密歇根州其他项目区组合的租约，这些项目区显示出与Sawyer Camp和Eagle 矿类似的特征。这些项目区目前正在接受公众评议，我们预计将在未来两个月内完成。

Lapoile Li, Newfoundland / 纽芬兰Lapoile锂项目

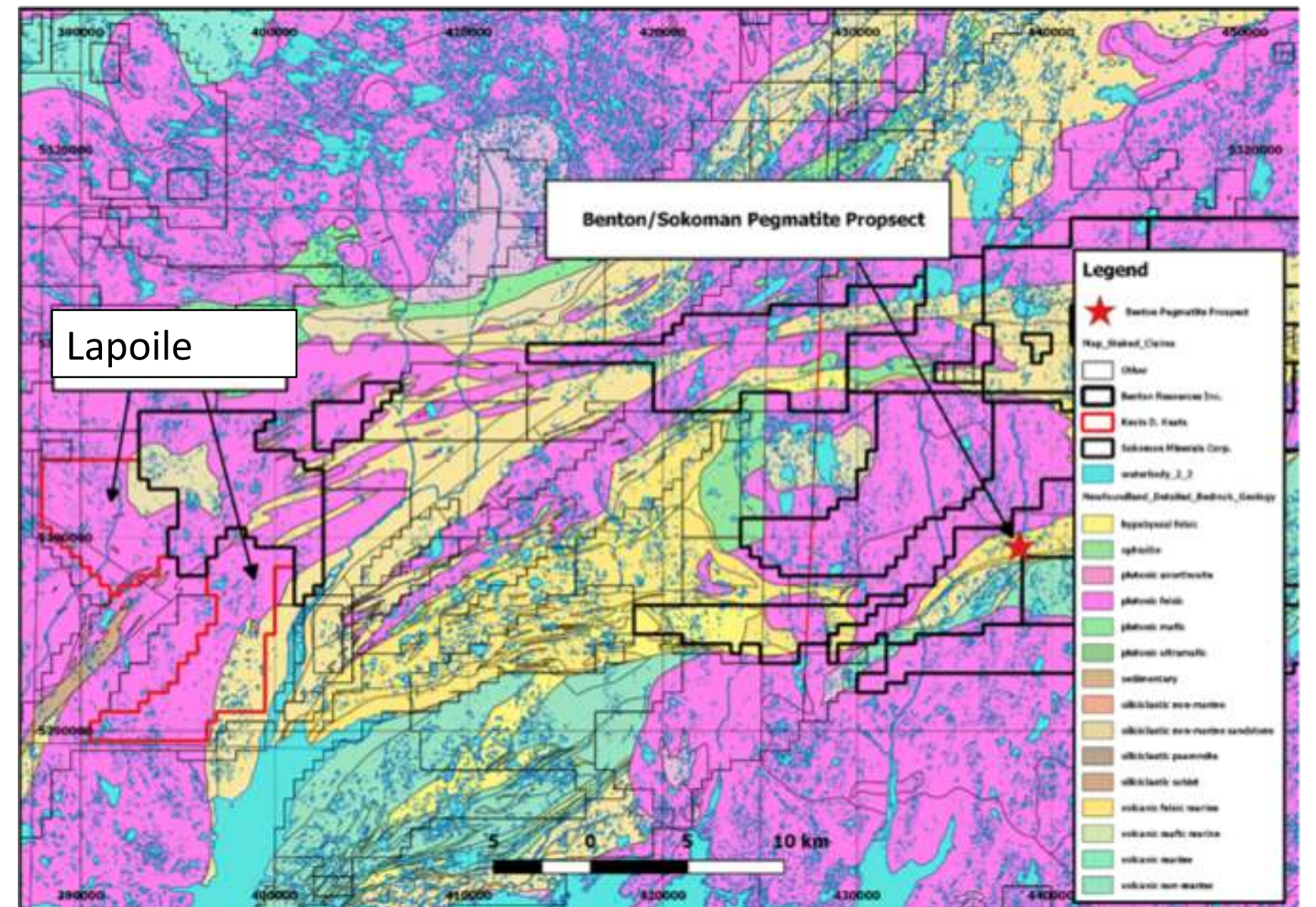
- Sokoman/Benton Li discovered swarm of Lithium-bearing pegmatites on their nearby Golden Hope Project / Sokoman/Benton在他们附近的Golden Hope项目发现了大量含锂伟晶岩。
- 31% of the pegmatite samples gave values >1% Li₂O with anomalous Beryllium, Cesium, Rubidium and Tantalum / 31%的伟晶岩样品中氧化锂含量超过1%，并有异常的铍、铯、铷和钽。
- Government till sampling on Keat's property shows Li values in the 29.1-52.6 ppm range (higher than the Sokoman/Benton discovery area) / 政府在Keats的项目区上进行的冰碛取样显示锂含量值在29.1-52.6ppm范围内（高于Sokoman/Benton发现区）。
- GBML has secured an option to earn 100% of the Keat's Lapoile property / GBML已经获得了挣得Keats的Lapoile项目区100%权益的权利。
- GBML directed prospecting and geological mapping will take place in spring/summer 2022 / 2022年春季/夏季GBML将进行定向踏勘和地质填图。

Lapoile Li, Newfoundland / 纽芬兰Lapoile锂项目

NF Till Survey / 纽芬兰冰碛勘测



Claim Map / 矿权区地图



LARA COPPER ASSET / LARA铜资产

Through Minas Dixon, GBML's 55 percent-owned Peruvian subsidiary has granted Minsur the option to acquire the property. The terms of this acquisition are displayed in the table to the right. / 通过Minas Dixon, GBML拥有55%股份的秘鲁子公司已经授予Minsur收购该项目区的选择权。这项收购的条款显示在右边的表格中。

In addition to these payments, GBML holds a 0.75% NSR on the property. / 除了这些付款, GBML还拥有该项目区0.75%净熔炼权利金。

Minsur is building a \$1.3 billion mine approximately 20 km away from Lara—an 1800 hectare property. / Minsur在距离Lara 20公里的地方建造一个\$13亿的矿—一个1800公顷的项目区。

Lara Drill highlights: / Lara钻探亮点:

- 108 meters at 0.9% CuEq* / 铜当量品位0.9%的108米矿段
- 218 meters at 0.81% CuEq* / 铜当量品位0.81%的218米矿段

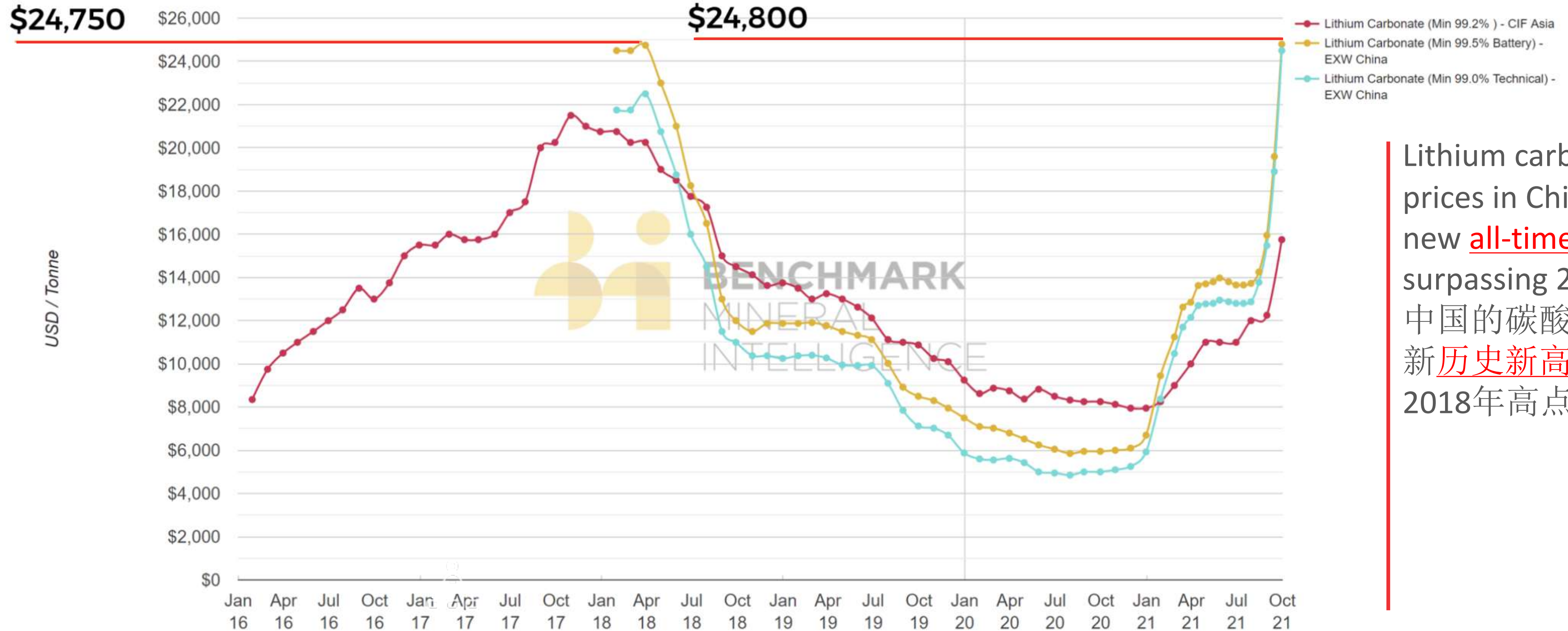
*Copper equivalents represent (Cu-Eq%) the value for each metal multiplied by the conversion factor, summed and expressed in equivalent copper grades. These results are exploration results only and no allowance is made for metallurgical recoveries. The conversion factors used were: CuEq (%) was calculated using US\$2.80 per pound of copper and US\$16 per pound of molybdenum. $CuEq = copper\% + (Mo\% \times 5.71428571)$ /*铜当量代表 (Cu-Eq%) 每种金属的价值乘以转换系数, 相加后表示为铜当量品位。这些结果只是勘探结果, 没有考虑到冶金回收率。使用的转换系数是: 铜当量 (%) 是以每磅铜2.8美元和每磅钼16美元计算的。铜当量=铜%+(钼%X5.71428571)

Milestone/Date / 里程碑/日期	Option Payments (\$US) / 期权支付 (美元)
Upon Registration of the Agreement before Public Notary / 在公证处登记协议时	59,000 (PAID / 已付)
One year from Registration of the Agreement / 登记协议后一年	200,000 (PAID / 已付)
Approval of Environmental Study and Start of Work ("DIA-IA") / 批准环境研究和工作启动("DIA-IA")	200,000
One year from approval of the DIA-IA / DIA-IA批准后一年	300,000
Approval of Semi-Detailed Environmental Study ("EIA-SD") / 批准半详细的环境研究("EIA-SD")	500,000
One year from approval of the EIA-SD / 批准EIA-SD后一年	1,500,000
Upon transfer of Title / 转让业权时	3,000,000
Total / 总计	5,759,000

*The numbers are on a 100% basis / *这些数字以100%为基础

LITHIUM PRICE / 锂价格

Lithium Prices: January 2016 - September 2021



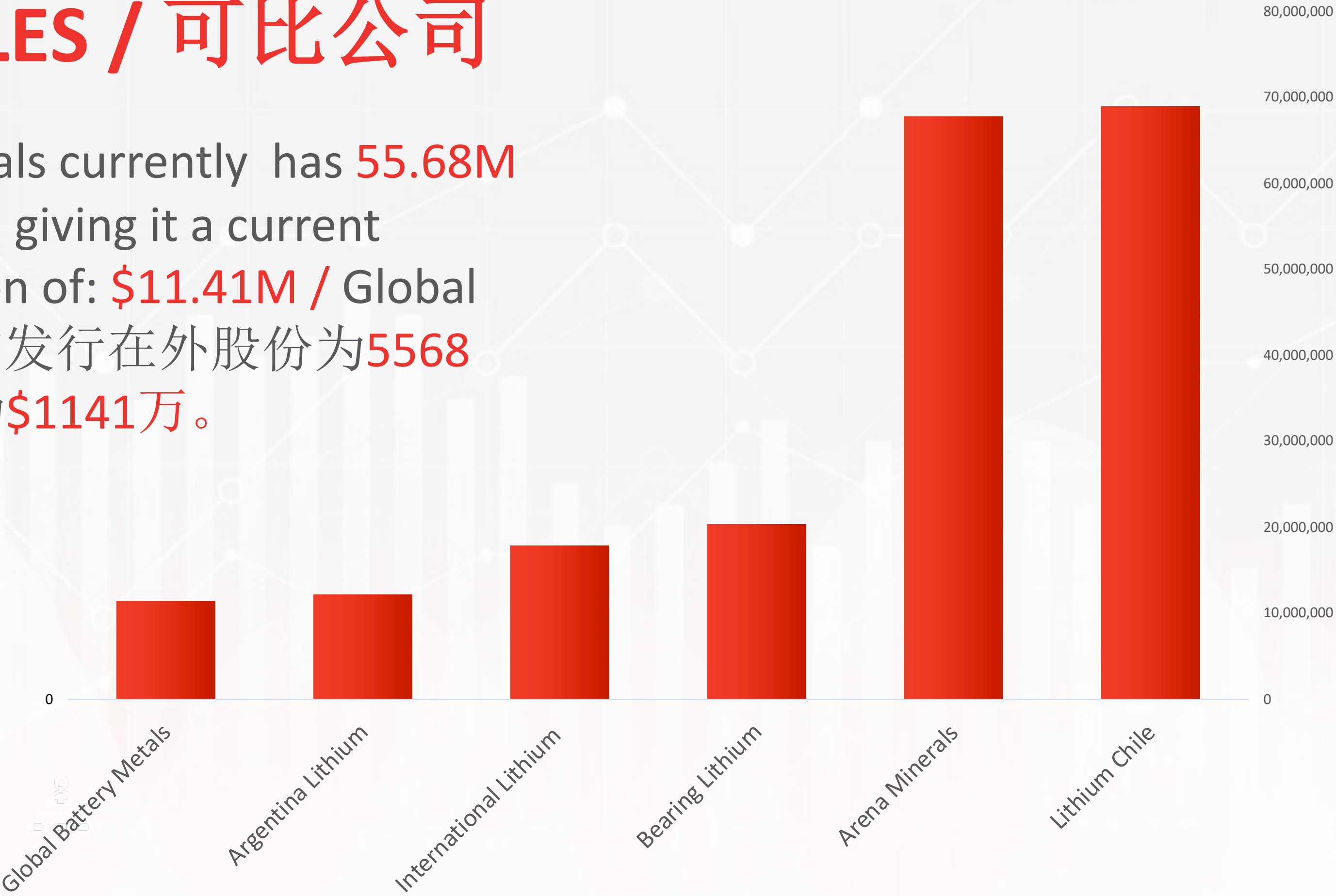
Lithium carbonate prices in China reach new all-time highs, surpassing 2018 peak / 中国的碳酸锂价格刷新历史新高，超过2018年高点。

RELATIVE PERFORMANCE / 相对表现



COMPARABLES / 可比公司

Global Battery Metals currently has 55.68M shares outstanding, giving it a current market capitalization of: \$11.41M / Global Battery Metals 目前发行在外股份为5568万股，当前市值为\$1141万。



*As of October 8, 2021 / 截止2021年10月8日

CONTACT / 联系方式



Michael Murphy

President & CEO / 总裁兼首席执行官



mm@gbml.ca