

**GOLD
SHORE**



GOLD SHORE RESOURCES INC.
CORPORATE PRESENTATION / 公司介绍

TSX.V: GSHR | OTC: GSHRF | FRA: 8X00.F

February 2022 / 2022年2月

Disclaimers / 免责声明

Introduction

Goldshore is an emerging junior gold development company, and owns the Moss Lake Gold Project located in Ontario. Wesdome Gold Mines Ltd. is currently a strategic shareholder of Goldshore with an approximate 30% equity position in the Company. Well-financed and supported by an industry-leading management group, board of directors and advisory board, Goldshore is positioned to advance the Moss Lake Gold Project through the next stages of exploration.

Legal Disclaimer

This presentation is provided solely for informational purposes and is not, and under no circumstances is to be construed as, a prospectus, or advertisement or a public offering of securities, and does not constitute an offer to buy, sell, issue or subscribe for, or the solicitation of an offer to buy, sell, issue or subscribe for any securities in any jurisdiction in which such offer, solicitation or sale would be unlawful. The information contained in this presentation: (a) is confidential and is being provided to you solely for your information and may not be reproduced, in whole or in part, in any form or forwarded or further distributed to any person other than your professional advisors in order to assist you with an evaluation of the Company, (b) is provided as at the date hereof and is subject to change without notice, (c) does not purport to contain all the information that may be necessary or desirable to fully and accurately evaluate the Company (including any investment in securities of the Company), and (d) is not to be considered as a recommendation by the Company that any person make an investment in the Company. This presentation should not be construed as legal, financial or tax advice to any individual, as each individual's circumstances are different. Readers should consult with their own professional advisors regarding their particular circumstances, and under no circumstances should readers base any decision on whether to invest in the Company solely upon the material provided herein.

There are no representations or warranties made herein by the Company or any of their representatives, agents or advisors, of any proposed offering of any securities of the Company and investors will only be able to rely on the representations and warranties contained in the applicable subscription agreement entered into by such investors at the time of purchase and sale of any such securities. Neither the delivery of this presentation nor any sale of securities by the Company shall under any circumstances imply that the information set forth herein is correct as of any date subsequent to the date hereof. Neither the Company nor any of its advisors, agents or representatives shall bear any liability (in negligence or otherwise) for any loss arising from any use of these presentation materials or their contents or otherwise arising in connection with these materials. By reviewing this presentation, you acknowledge and agree (i) to maintain the confidentiality of this presentation and the information contained herein, (ii) to protect such information in the same manner you protect your own confidential information, which shall be at least a reasonable standard of care, and (iii) to not utilize any of the information contained herein except for information purposes and not transmit, reproduce or make available to any person, other than their professional advisors, this presentation or any of the information contained herein. There are certain risks inherent in an investment in the securities of the Company that prospective investors should carefully consider before investing in the securities of the Company.

The securities will not be and have not been registered under the U.S. Securities Act or the securities laws of any state of the United States, and if sold in the United States or to, or for the account of benefit of, U.S. Persons, will be "restricted securities" within the meaning of Rule 144 under the U.S. Securities Act. The securities may be resold, pledged or otherwise transferred only pursuant to an effective registration statement under the U.S. Securities Act or pursuant to an applicable exemption from the registration requirements of the U.S. Securities Act.

IN MAKING AN INVESTMENT DECISION, INVESTORS MUST RELY ON THEIR OWN EXAMINATION OF THE COMPANY AND THE TERMS OF THE APPLICABLE OFFERING, INCLUDING THE MERITS AND RISKS INVOLVED. THE SECURITIES HAVE NOT BEEN APPROVED OR DISAPPROVED BY THE SECURITIES AND EXCHANGE COMMISSION OR BY ANY STATE SECURITIES COMMISSION OR REGULATORY AUTHORITY. NO SECURITIES REGULATORY AUTHORITY OR SIMILAR AUTHORITY HAS REVIEWED OR IN ANY WAY PASSED ON THE ACCURACY OR ADEQUACY OF THIS PRESENTATION. ANY REPRESENTATION TO THE CONTRARY IS A CRIMINAL OFFENSE.

No securities exchange, securities commission or other regulatory authority has approved nor disapproved or reviewed or in any way passed upon this presentation or the merits of the securities of the Company, and any representation to the contrary is an offense.

All information is presented in Canadian dollars unless otherwise stated, as of the date indicated on the face page of this presentation.

Galen McNamara, is the Qualified Person as defined by NI 43-101, and has prepared and approved the technical data and information in this presentation.

Creating the next tier one asset in Ontario

创建安大略省下一个一级资产

Tier one asset target criteria: / 一级资产标准：

- 10M oz Au resource / 1000万盎司黄金资源量
- 10+ year LOM / 矿山寿命超过10年
- Ave Annual Production of >500,000 oz pa / 年均产量超过50万盎司
- Lower half of the cost curve <\$900 / 处在成本曲线的下半部分<\$900

* See Appendix for Disclaimers & Sources / 见附录中的免责声明和资料来源



Focused top quality management team and board with deep experience and track record of value creation / **专注的优秀管理团队和董事会**，拥有深厚的经验和创造价值的履历



Low risk jurisdiction of Ontario which is a major global gold producer with a rich mining history / **安大略省**是全球主要的黄金产区，拥有丰富的采矿历史，也是一个**低风险的管辖区**



Untapped exploration upside with multiple deposits on a +20 km mineral trend on the project / 在该项目20多公里长的矿产趋势带上分布多个矿床，**勘探潜力尚未挖掘**



Active 100,000m drill program and additional exploration activities / **规划了100,000米的积极钻探**和其他勘探活动



Historic PEA from 2013 (outdated) based on historic metal prices and exchange rate assumptions. **Updated by Wesdome in 2020** / **2013年的历史PEA**（已过期）是基于历史金属价格和汇率假设。**由Wesdome在2020年更新**

Moss Lake Acquisition Terms Moss Lake 收购条款



Acquisition Terms: / 收购条款:

- \$12.5 million in cash upon Closing (**completed**) / 交易完成时现金支付\$1250万 (**已完成**)
- The greater of \$19.5 million in shares or 30% of the shares outstanding in Goldshore post financing (**completed**) / 价值\$1950万的股份或融资后Goldshore已发行股份的30%，以较高者为准 (**已完成**)
- \$5 million in shares of Goldshore within 1 year of Closing / 在交易结束后的一年内，购买价值\$500万Goldshore的股票
- \$7.5 million in shares of Goldshore upon completion of a PEA, PFS or within 2.5 years of Closing / 在完成初步经济评估、预可行性研究或在交易结束后2.5年内，价值\$750万的Goldshore股票
- \$7.5 million in shares of Goldshore upon completion of a Feasibility Study or within 4 years of Closing / 可行性研究完成后或交易结束后4年内，价值\$750万的Goldshore的股票

NSR: / 净熔炼权利金:

- 1.0% NSR granted to Wesdome with buyback provisions for 4 years from Closing* / 授予Wesdome 1.0%的净熔炼权利金，并规定自交易完成后4年内回购*

* Goldshore can purchase back the 1% NSR within 36 months for \$3 million in cash and \$2 million in Goldshore shares. Between 36 months and 48 months, Goldshore can purchase back the 1% NSR for \$5.5 million in cash and \$2 million in Goldshore shares. / * Goldshore可以在36个月内以\$300万现金加\$200万Goldshore股票回购1%的NSR。在36个月和48个月之间，Goldshore可以以\$550万现金加\$200万Goldshore股票回购1%的NSR。

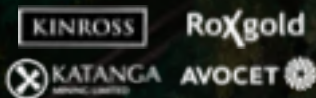
Management / 管理层



Brett Richards

CEO & Director / 首席执行官兼董事

- Over 34 years of experience in mining and metals including mine financing, mine development, senior level operations and M&A. / 超过34年的采矿和金属行业经验，包括矿山融资、矿山开发、高级别运营和并购。
- Led Banro Corp. through an operational transition as a private company to divest certain assets / 领导Banro Corp.完成了作为私营公司的运营转型，剥离了某些资产
- Former transition CEO of Roxgold (TSX:ROXG) and former senior executive of Katanga Mining (TSX:KAT) / Roxgold (TSX:ROXG)的前过渡首席执行官和Katanga Mining (TSX:KAT)的前高管
- Former senior executive positions with Kinross Gold (TSX:K) and Co-Steel (TSX:CEI) / 曾在Kinross Gold (TSX:K)和Co-Steel (TSX:CEI)担任高级管理职务



Peter Flindell

VP Exploration / 勘探副总裁

- 35 years of experience in mineral exploration and feasibility studies / 在矿产勘探和可行性研究方面拥有35年的经验
- Led teams to discover, develop and expand several gold and copper mines in Southeast Asia, Central Asia, West Africa, Central Africa, Europe and Central America. / 带领团队在东南亚、中亚、西非、中非、欧洲和中美洲发现、开发和扩大多个金矿和铜矿。
- Additional experience in base metal and iron ore projects / 在基本金属和铁矿石项目方面有额外的经验
- 12 years with Newmont Mining, 11 years with Avocet Mining and 8 years with Signal Delta. / 在Newmont Mining工作了12年，在Avocet Mining工作11年，在Signal Delta工作8年。



Marlis Yassin

CFO CPA, CA / 首席财务官、特许注册会计师、注册会计师

- Over 15 years experience working with companies in various sectors, including mining, technology, and industrial products / 超过15年与各行业公司合作的经验，包括采矿、技术和工业产品
- Held senior finance management positions at various public companies, including a large industrial products company and mid-tier mining companies / 曾在多家上市公司担任高级财务管理职务，包括一家大型工业产品公司和中等规模的矿业公司
- Gained extensive experience at Deloitte providing reporting, advisory and assurance services to publicly traded companies, primarily in natural resources / 在德勤公司积累了丰富的经验，为上市公司提供报告、咨询和审计服务，主要是在自然资源领域
- CPA, CA (British Columbia) and holds a Bachelor of Commerce degree from the University of British Columbia / 特许注册会计师、注册会计师(卑诗省)，持有卑诗大学的商业学士学位

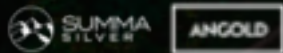


Board of Directors / 董事会



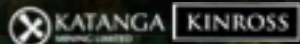
Galen McNamara
Chairman / 董事会主席

- Entrepreneur and Geologist with extensive discovery and capital markets experience over 15 years / 拥有超过15年广泛发现和资本市场经验的企业家和地质学家
- CEO and Director of Summa Silver Corp (TSXV:SSVR) / Summa Silver Corp (TSXV:SSVR)的首席执行官和董事
- Chairman of Angold Resources Inc (TSXV:AAU) / Angold Resources Inc (TSXV:AAU)的董事会主席
- Co-winner 2018 PDAC Bill Dennis "Prospector of the Year" Award and 2016 Mines and Money Exploration Award / 2018年PDAC比尔·丹尼斯“年度探矿者”奖和2016年Mines and Money勘探的共同获奖者
- Former Senior Project Manager – Exploration & Development at NexGen Energy / NexGen Energy的前勘探与开发高级项目经理



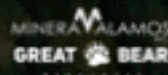
Brett Richards
CEO & Director / 首席执行官兼董事

- Over 34 years of experience in mining and metals including mine financing, mine development, senior level operations and M&A. / 超过34年的采矿和金属行业经验，包括矿山融资、矿山开发、高级运营和并购。
- Led Banro Corp. through an operational transition as a private company to divest certain assets / 领导Banro Corp.完成了作为私营公司的运营转型，剥离了某些资产
- Former transition CEO of Roxgold (TSX:ROXG) and former senior executive of Katanga Mining (TSX:KAT) / Roxgold (TSX:ROXG)的前过渡首席执行官和Katanga Mining (TSX:KAT)的前高管
- Former senior executive positions with Kinross Gold (TSX:K) and Co-Steel (TSX:CEI) / 曾在Kinross Gold (TSX:K)和Co-Steel (TSX:CEI)担任高级管理职务



Doug Ramshaw
Director / 董事

- 25 years of experience in the mineral resource sector / 在矿产资源领域有25年的经验
- Mining geologist by training and a former mining analyst / 接受过培训的采矿地质学家，曾经是一名矿业分析师
- President and Director of Minera Alamos (TSXV:MAI) / Minera Alamos (TSXV:MAI)的总裁和董事
- Director of Great Bear Resources (TSXV:GBR) / Great Bear Resources (TSXV:GBR)的董事
- Experienced mining executive within the resource sector with a focus on mineral project evaluation, M&A, capital markets and business development strategies. / 在资源领域有丰富的采矿管理经验，专注于矿产项目评估、并购、资本市场和业务发展战略。



Brandon Macdonald
Director / 董事

- Professional geologist with a diverse experience base including exploration geology worldwide and investment banking / 专业地质学家，拥有包括全球范围内的勘探地质学和投资银行等多元化的经验
- Current CEO and Director of Fireweed Zinc Ltd (TSXV:FWZ) / Fireweed Zinc Ltd (TSXV:FWZ)现任首席执行官和董事
- Has a B.Sc. in Geology from UBC and has an MBA with distinction from Oxford University / 拥有卑诗大学的地质学学士学位，并以优异成绩获得牛津大学的工商管理硕士学位
- Focused on exploration and development as a principal and as a consultant to various junior mining companies / 以负责人和顾问的身份，专注于各个初级矿业公司的勘探和开发



Shawn Khunkhun
Director / 董事

- Over 15 years of experience in the capital markets, mineral exploration and development sector / 在资本市场、矿产勘探和开发领域拥有超过15年的经验
- Current CEO and Director of Dolly Varden Silver Corp (TSXV:DV) / Dolly Varden Silver Corp (TSXV:DV)的现任首席执行官和董事
- Extensive network of high net worth retail and institutional investors, analysts, brokers and private equity groups / 拥有广泛的高净值散户和机构投资者、分析师、经纪人和私募股权集团关系网
- Has facilitated over \$1B in equity raised for resources companies over the past 17 years / 过去17年为资源类公司共促成了超过10亿美元的股权融资



Board of Directors / 董事会



Victor Cantore
Director / 董事

- Seasoned capital markets professional specializing in the resource and high tech sectors. / 经验丰富的资本市场专业人士，擅长资源和高科技领域。
- Over 25 years of advisory and leadership experience, having begun his career in 1992 as an investment advisor and then moving into management roles at both public and private companies / 拥有超过25年的咨询和领导经验，1992年开始担任投资顾问，随后在上市和私营公司担任管理职务
- Currently the President & CEO of Amex Exploration (TSXV:AMX) / 目前担任Amex Exploration (TSXV:AMX)的总裁和首席执行官



Joanna Pearson
Director / 董事

- Current CFO of Endeavour Mining Corporation, with a multi-asset portfolio in West Africa, current market cap of >\$7B CAD / 目前担任Endeavour Mining Corporation的首席财务官，该公司在西非拥有一个多资产组合，当前市值已超过70亿加元
- Seasoned financial veteran from public accounting with Deloitte LLP with over 20 years in client service and 10 years as audit partner, operating primarily in the mining sector / 德勤会计师事务所的资深财务人员，拥有20多年的客户服务经验和10年的审计合伙人经验，主要面对采矿行业



Michael Michaud
Wesdome Board Rep /
Wesdome董事会代表

- Professional geologist with over 30 years of experience in domestic and international gold exploration and mining in North and South America, Asia and Europe / 有30多年经验的专业地质学家，专注于北美、南美、亚洲和欧洲的国内和国际黄金勘探和开采
- Currently VP, Exploration at Wesdome Gold Mines (TSX:WDO) / 目前是Wesdome Gold Mines (TSX:WDO)的勘探副总裁
- Formerly served as Chief Geologist at IAMGOLD (TSX:IMG), Vice President, Exploration at St. Andrew Goldfields and was a Principal of SRK Consulting Inc. / 曾任IAMGOLD (TSX:IMG)的首席地质学家、St. Andrew Goldfields的勘探副总裁，曾经是SRK Consulting Inc.的负责人



Heather Laxton
Wesdome Board Rep / Wesdome
董事会代表

- Over 23 years of corporate governance, corporate secretarial, and securities regulation experience in the mining sector / 在采矿领域拥有超过23年的公司治理、公司秘书和证券监管经验
- Currently Chief Governance Officer with Wesdome Gold Mines Ltd. (TSX:WDO) / 目前是Wesdome Gold Mines Ltd. (TSX:WDO)的首席治理官
- Previously Corporate Secretary with Kirkland Lake Gold (TSX:KL), CGO and Corporate Secretary with Northern Gold Mining Inc. / 曾任Kirkland Lake Gold (TSX:KL)的公司秘书，以及Northern Gold Mining Inc.的首席治理官和公司秘书
- Has led the evaluation, design, implementation and monitoring of governance programs for several junior and emerging companies / 曾领导多个初级和新兴公司治理方案的评估、设计、实施和监测工作



Strategic Advisory Board / 战略顾问委员会



David Garofalo

Strategic Advisor / 战略顾问

- Worked in various leadership capacities in the natural resources sector over the last 30 years / 过去30年在自然资源领域担任过各种领导职务
- Former CEO of Goldcorp Inc until its sale to Newmont in April 2019 / Goldcorp Inc.的前首席执行官, 直至该公司2019年4月被纽蒙特收购

GOLDCORP



Leo Hathaway

Strategic Advisor / 战略顾问

- Geologist with extensive experience in the exploration and mining sector / 在勘探和采矿领域经验丰富的地质学家
- Currently Senior VP Exploration for Luminex Resources (TSXV:LR) and Senior VP of Lumina Gold (TSXV:LUM) / 目前是Luminex Resources (TSXV:LR)的高级勘探副总裁和Lumina Gold (TSXV:LUM)的高级副总裁

LUMINEX
LUMINA GOLD



Craig Parry

Strategic Advisor / 战略顾问

- Senior Advisor, former and founding director at Nexgen Energy (TSXV:NXE) / 高级顾问、Nexgen Energy (TSXV:NXE)的前董事和创始董事
- Current Chairman Skeena Resources (TSXV:SKE), CEO and founder of IsoEnergy (TSXV:ISO) / Skeena Resources (TSXV:SKE)的现任董事会主席、IsoEnergy (TSXV:ISO)的首席执行官和创始人

SKEENA IsoEnergy



Daniel J. Kunz

Strategic Advisor / 战略顾问

- Current CEO & Director of Prime Mining Corp (TSXV:PRYM) / Prime Mining Corp (TSXV:PRYM)的现任首席执行官和董事
- Former CEO of \$4.2bn Ivanhoe Mines Ltd, founder and CEO of US Geothermal Inc which sold for \$250m / 市值\$42亿的艾芬豪矿业有限公司前首席执行官, US Geothermal Inc的创始人和首席执行官, 该公司以\$2.5亿被出售

PRIME MINING CORP.



Bryan Slusarchuk

Strategic Advisor / 战略顾问

- Former President and Director of K92 Mining Ltd (TSX:KNT) / K92 Mining Ltd (TSX:KNT)前总裁和董事
- Current CEO and Director of Fosterville South Exploration (TSXV:FSX), CEO and Director of Zacatecas Silver Corp & President and Director of Turmalina Metals Corp. (TSXV:TBX) / Fosterville South Exploration (TSXV:FSX)的现任首席执行官和董事, Zacatecas Silver Corp的首席执行官和董事以及Turmalina Metals Corp. (TSXV:TBX)的总裁和董事

K92 Fosterville South Exploration Zacatecas Silver Corp Turmalina



Adrian Rothwell

Strategic Advisor / 战略顾问

- Current President, CEO & Director of Angold Resources Ltd., (TSXV:AAU), founder & Director of KORE Mining Ltd (TSXV:KORE), and Director of Fireweed Zinc Ltd. (TSXV:FWZ) / Angold Resources Ltd., (TSXV:AAU)现任总裁、首席执行官和董事、KORE Mining Ltd (TSXV:KORE)创始人和董事、Fireweed Zinc Ltd. (TSXV:FWZ)董事
- Former Executive at Goldcorp (now Newmont Corp NYSE:NEM) / Goldcorp(现在的Newmont Corp NYSE:NEM)前高管

ANGOLD GOLDCORP K

| THE REGION / 区域

Year-round exploration in a highly prospective area in Ontario with extensive infrastructure near project site

在安大略省一个具有高度前景的地区进行全年勘探，项目现场附近有广泛的基础设施

Detour ¹	Kirkland Lake Gold	P&P / 已探明和基本探明: 15.7M oz Au / 1570万盎司黄金	0.82 g/t Au / 金品位0.82克/吨
		M&I / 测定和指示: 14.7M oz Au / 1470万盎司黄金	0.80 g/t Au / 金品位0.80克/吨
		Inf / 推断: 1.1M oz Au / 110万盎司黄金	0.81 g/t Au / 金品位0.81克/吨
Rainy River ¹	New Gold	P&P / 已探明和基本探明: 2.6M oz Au / 260万盎司黄金	1.06 g/t Au / 金品位1.06克/吨
		M&I / 测定和指示: 1.9M oz Au / 190万盎司黄金	2.57 g/t Au / 金品位2.57克/吨
		Inf / 推断: 0.2M oz Au / 20万盎司黄金	1.77 g/t Au / 金品位1.77克/吨
Côté ¹	IAMGOLD & Sumitomo	P&P / 已探明和基本探明: 7.3M oz Au / 730万盎司黄金	1.0 g/t Au / 金品位1.0克/吨
		M&I / 测定和指示: 10.2M oz Au / 1020万盎司黄金	0.88 g/t Au / 金品位0.88克/吨
		Inf / 推断: 3.8M oz Au / 380万盎司黄金	0.6 g/t Au / 金品位0.6克/吨
Moss Lake [*] (Historical Estimate / 历史估测)	Goldshore Resources	M&I / 测定和指示: 1.47M oz Au / 147万盎司黄金 Inf / 推断: 2.51M oz Au / 251万盎司黄金	1.08 g/t Au / 金品位1.08克/吨0.98g/t Au / 金品位0.98克/吨



¹ Source: Company disclosure documents / 来源: 公司披露文件
The information is not necessarily indicative of mineralization on the Moss Lake Project.
这些信息不一定能说明Moss Lake项目的矿化情况。

* See Appendix for Disclaimers & Sources / 见附录中的免责声明和资料来源

**Extensive
Historical
exploration
work already
completed on
the land package
with plans for
accelerated
development**
已经在土地上完成了大
范围的历史勘探工作，
并计划加速开发

● **Late 1800's
to 1950 / 19世
纪末至1950年**

First generation of prospecting results in the discovery multiple high-grade gold occurrences and the North Coldstream
Cu-Au-Ag Deposit, 2.7Mt of production at 1.89% Cu, 0.56 g/t Au, 5.59 g/t Ag / 第一代探矿成果发现了多个高品位的金矿点和North Coldstream铜金银矿床，产量270万吨，铜品位1.89%，金品位0.56克/吨，银品位5.59克/吨

● **1970's / 上
世纪70年代**

Gold exploration intensifies with Falconbridge
Exploration of the Snodgrass Lake prospect / Falconbridge Exploration在Snodgrass Lake前景区的工作加强了黄金勘探

● **1985**

Original Moss Lake Deposit showing stripped and washed by Tandem/Storimin JV / 最初的Moss Lake矿床显示经过Tandem/Storimin JV剥采和洗矿

● **1986-1990**

Extensive drilling and 1,000 m of underground development work completed by several groups, first resource estimates and metallurgical work. **North Coldstream Mine** operated by Noranda / Xstrata (1980-1992; closed in 1992) / 多个团体相继完成了广泛的钻探和1000米的地下开发工作，首次进行了资源量估计和冶金工作。由Noranda / Xstrata经营**North Coldstream矿**(1980-1992; 1992年关闭)

● **1990's / 上世
纪90年代**

Moss Lake Gold Mines completes 17 hole drilling program in 1996, multiple geophysical surveys, and historic data compilation study / Moss Lake Gold Mines在1996年完成了17个钻孔的钻探计划，进行了多项地球物理测量，并进行了历史数据汇编研究

● **2000's / 21世
纪第一个十年**

Moss Lake Gold Mines continues exploration with several modest drill campaigns and further geological and geophysical surface programs, updated resource estimate in 2010 / Moss Lake Gold Mines继续进行勘探，开展了多次规模适中的钻探活动，并进一步开展了地质和地球物理地面项目，在2010年更新了资源量估计

● **2010's / 21世
纪第二个十年**

PEA completed by Moss Lake Gold Mines in 2013, ownership amalgamated by Wesdome Gold Mines in 2014 with Coldstream and Hamlin properties acquired in 2016, further exploration and drilling programs in 2016 and 2017 confirmed extensions of mineralization along strike / 2013年Moss Lake Gold Mines完成了初步经济评估，2014年由Wesdome Gold Mines合并了所有权，2016年收购了Coldstream和Hamlin项目区，2016年和2017年的进一步勘探和钻探项目证实了矿化作用沿走向延伸

Historical mineral resources and production on the project

该项目的历史矿产资源量和产量

Deposit / 矿床	Tonnes / 吨	INDICATED / 指示		Tonnes / 吨	INFERRED / 推断		
		Historical / 历史			Historical / 历史		
		Au g/t 黄金 克/吨	Au oz 黄金 盎司		Au g/t 黄金 克/吨	Au oz 黄金 盎司	
Moss Lake Deposit / Moss Lake矿床 (2013 resource estimate / 2013年资源量估测)							
Open Pit Potential / 露天矿潜力	39,795,000	1.1	1,377,300	48,904,000	1.0	1,616,300	
Underground Potential / 地下潜力	-	-	-	1,461,100	2.9	135,400	
Moss Lake Total / Moss Lake汇总	39,795,000	1.1	1,377,300	50,364,000	1.1	1,751,600	
East Coldstream Deposit* / East Coldstream 矿床(2011 resource estimate / 2011年资源量估测)							
East Coldstream Total / East Coldstream汇总	3,516,700	0.85	96,400	30,533,000	0.78	763,276	
Combined Total / 全部汇总							
	43,311,700	1.08	1,473,700	80,897,000	0.98	2,514,876	
Project / 项目	Tonnes / 吨	Cu / 铜 %	Au g/t 黄金 克/吨	Ag 白银	Cu lbs 铜 磅	Au oz 黄金 盎司	Ag oz 白银 盎司
North Coldstream Deposit* / North Coldstream矿床(1902-1967)							
Historical Production 历史产量	2,700,000	1.89	0.56	5.59	102,000,000	44,000	440,000

Moss Lake Deposit resource estimate is based on 0.5 g/t Au cut-off grade for open pit and 2.0 g/t Au cut-off grade for underground resources

East Coldstream Deposit resource estimate is based on a 0.4 g/t Au cut-off grade

/ Moss Lake矿床的资源量估测是基于露天矿0.5克/吨的黄金边际品位和地下资源2.0克/吨的黄金边际品位 * See Appendix for Disclaimers & Sources / 见附录中的免责声明和资料来源

Moss Lake has 1.47 M oz of Indicated and 2.51 M oz of Inferred historical gold resources on the project*

Moss Lake项目拥有147万盎司的指示黄金资源量和251万盎司的推断历史黄金资源量*

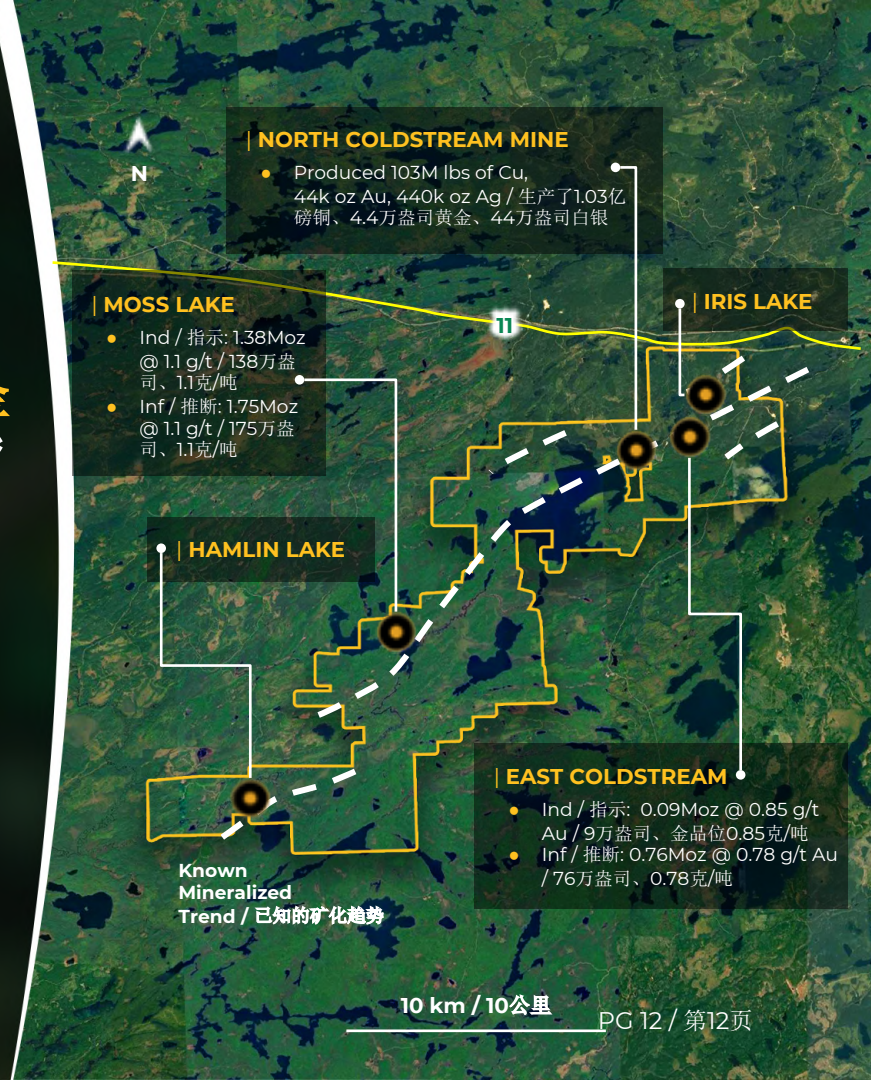
➤ **Under-drilled gold asset with infill and expansion drilling necessary*** / 钻探不充分的黄金资产，有必要进行加密和扩展钻探*

➤ 20+ km long mineral trend with multiple other mineralized zones and targets ready for follow-up / 20多公里长的矿产趋势带上有多个其他矿化区和靶区，可供后续跟进

➤ **Multiple geological occurrences on land package / 土地包上有多个地质矿点**

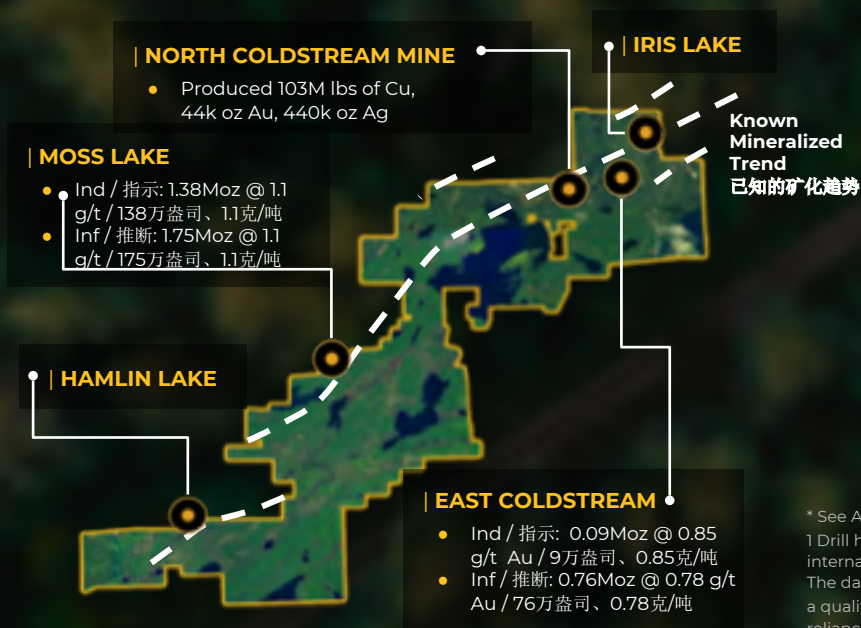
- Moss Lake project – shear zone hosted style deposit / Moss Lake项目-剪切带承载型矿床
- Hamlin Lake – I.O.C.G. style deposit / 铁氧化物-铜-金型矿床
- North Coldstream – V.M.S. style deposit / 火山成因块状硫化物矿床

* See Appendix for Disclaimers & Sources / 见附录中的免责声明和资料来源



Moss Lake Historical Drill Hole Highlights

Moss Lake历史钻孔亮点¹



Moss Lake Deposit / Moss Lake矿床*

- 108,000 m in 376 holes between 1983 and 2017 / 1983年至2017年期间, 376个钻孔共钻探了108,000米
- 1.44 g/t Au over 72.8 m / 金品位1.44克/吨的72.8米矿段⁸⁹⁻¹⁷²
- 1.19 g/t Au over 163.1 m / 金品位1.19克/吨的163.1米矿段⁸⁷⁻¹⁰¹
- 1.30 g/t Au over 178.6 m / 金品位1.30克/吨的178.6米矿段⁸⁷⁻¹⁰⁰

Iris Lake Prospect / Iris Lake前景区*

- 5,600 m scout drilling in 2011 / 2011年进行了5600米的侦察钻探
- 11.4 g/t Au over 7.9 m / 金品位11.4克/吨的7.9米矿段^{IL-11-02}
- 254 g/t Au over 0.5 m / 金品位254克/吨的0.5米矿段^{IL-11-12}
- 1.28 g/t Au over 29.7 m / 金品位1.28克/吨的29.7米矿段^{IL-11-20}

East Coldstream Deposit / East Coldstream矿床*

- 38,000 m in 139 holes between 1988 and 2017 / 1988年至2017年期间 139个钻孔钻探了38,000米
- 4.86 g/t Au over 27.3 m / 金品位4.86克/吨的27.3米矿段^{C-10-15}
- 1.12 g/t Au over 111.3 m / 金品位1.12克/吨的111.3米矿段^{C-10-16}

Hamlin Lake Zone / Hamlin Lake区*

- 9,000 m in 26 holes between 2008 and 2011 / 2008年至2011年期间26个钻孔钻探了9000米
- 0.90 g/t Au and 0.35% Cu over 150.7 m / 金品位0.90克/吨、铜0.35%的150.7米矿段^{HAM-11-74}

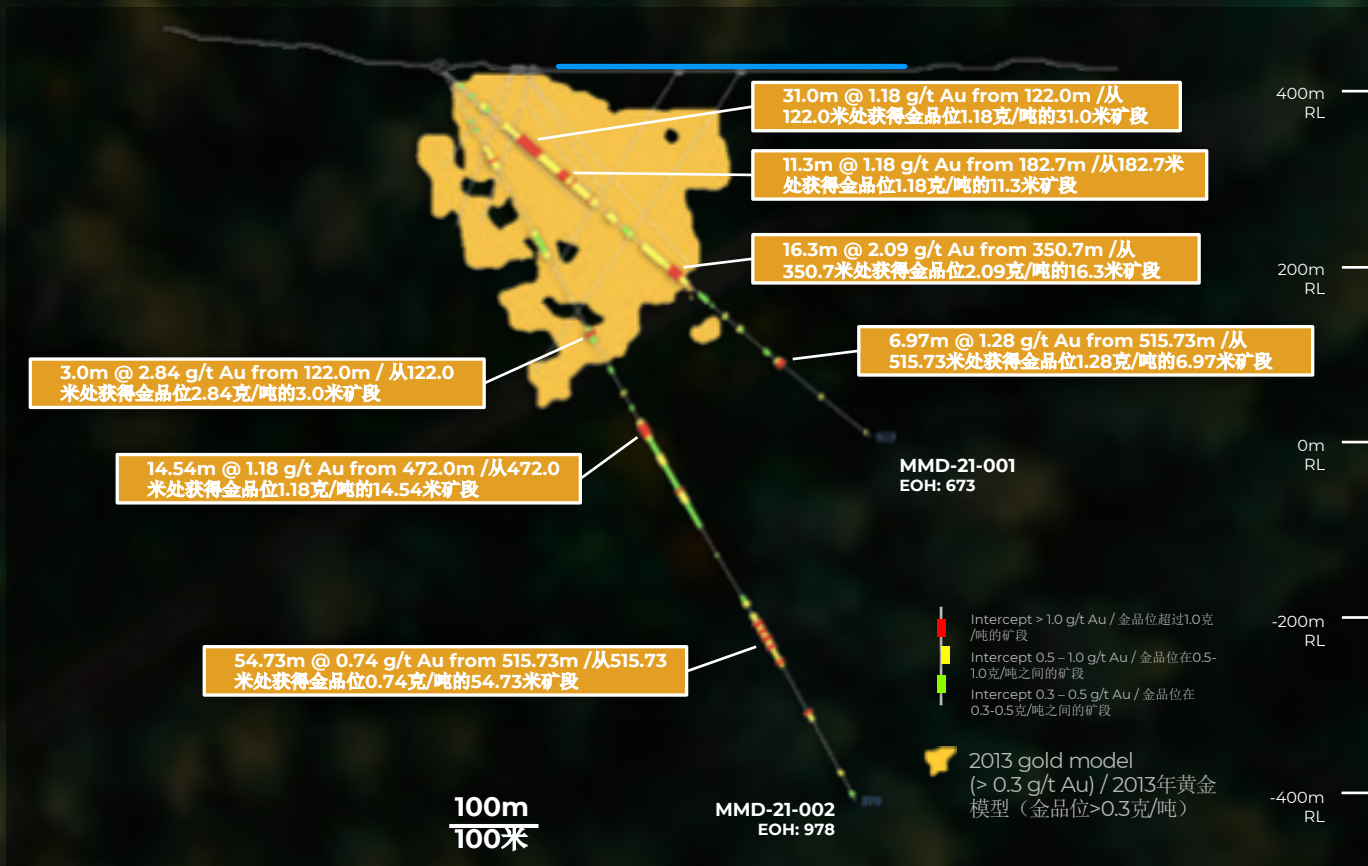
* See Appendix for Disclaimers & Sources / 见附录中的免责声明和资料来源

1 Drill hole composites based on a cut-off grade of 0.3 g/t Au and may include up to 10m of internal dilution. / 钻孔的结果基于0.3克/吨的黄金边际品位, 可能包括最多达10米的内部稀释。The data disclosed here relating to drilling results is historic in nature. Neither the Company nor a qualified person has yet verified this data and therefore investors should not place undue reliance on such data. / 这里披露的与钻探结果有关的数据都是历史数据。本公司或合资格人士尚未核实这些数据, 因此投资者不应过分依赖这些数据。

The Company's future exploration work will include verification of the data. / 本公司未来的勘探工作将包括对这些数据的验证。

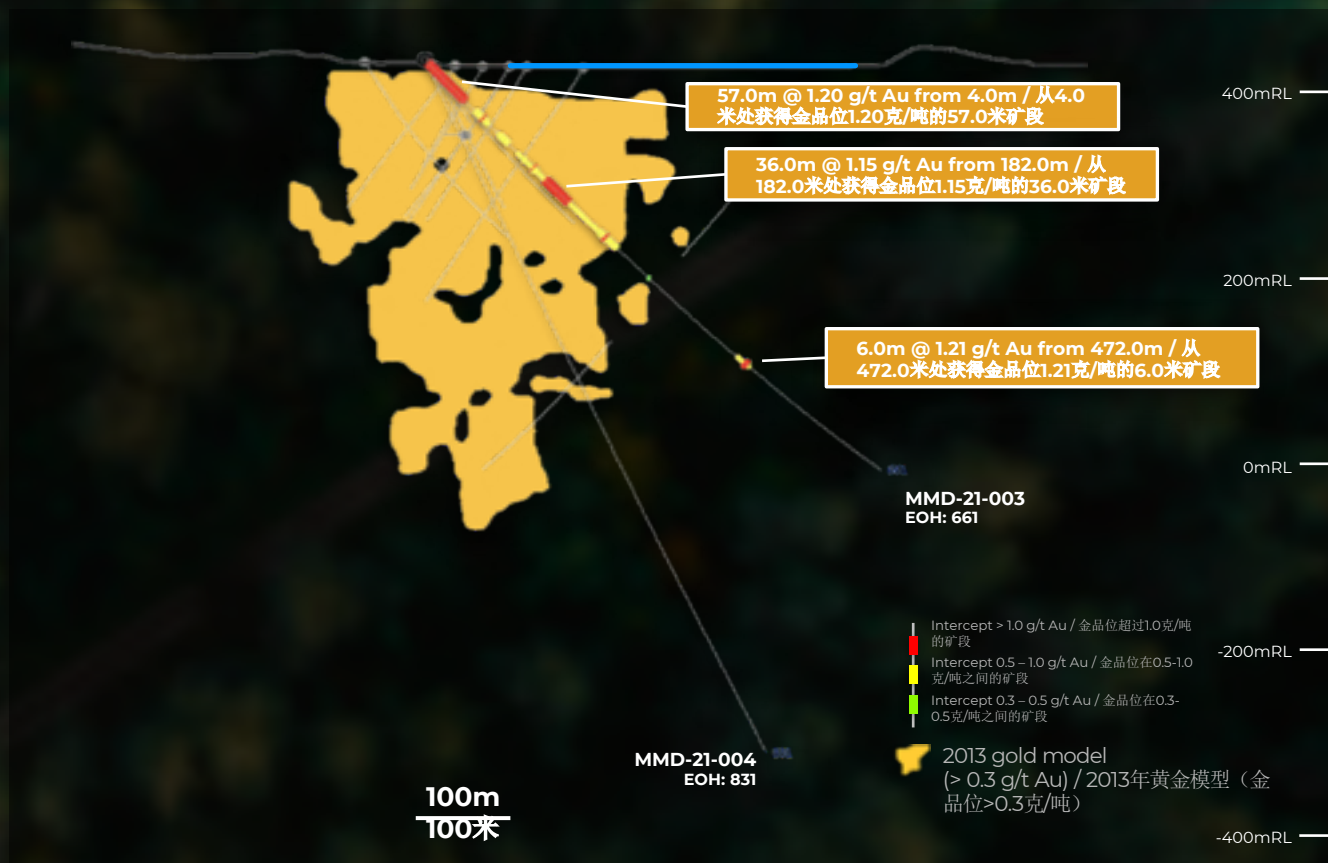
Significant lateral resource expansion potential being identified in early drill holes

在早期的钻孔中发现了巨大的横向资源扩展潜力



Significant lateral resource expansion potential being identified in early drill holes

在早期的钻孔中发现了巨大的横向资源扩展潜力



Infrastructure building / 基础设施建设



Base of operations established
at Kashabowie just off Highway 11 / **运营**
基地建在了11号公路旁的Kashabowi



grid power, telecommunications
and utilities already established / **已经建**
立电网电力、通信和公用事业设施



Will facilitate all-year operations
without the need for camp
establishment on site / **将促进开展全**
年的运营，无需在现场建立采矿营地



On-site core shack and office completed – enabling
core processing at a rate of
400 m per day / 现场岩芯棚和办公室已经建成-使岩芯处
理速度达到每天400米



Lodging completed to support year round
operations / 住宿设施完成，以支持全年的运营



Inventory created of historic core / 创建历史岩芯目录



Selected holes moved to Kashabowie for relogging
and creation of a rock library / 选定的钻孔被转移到
Kashabowie进行重新录入并建立一个岩石库

| ABOUT MOSS LAKE / 关于MOSS LAKE

Infrastructure established & ready to scale up drilling 基础设施已经建立并准备好扩大钻探规模

Core shack and bunkies / 岩芯棚和工棚



On-Site Accommodations

现场住宿



Office above service rooms

服务室上方的办公室



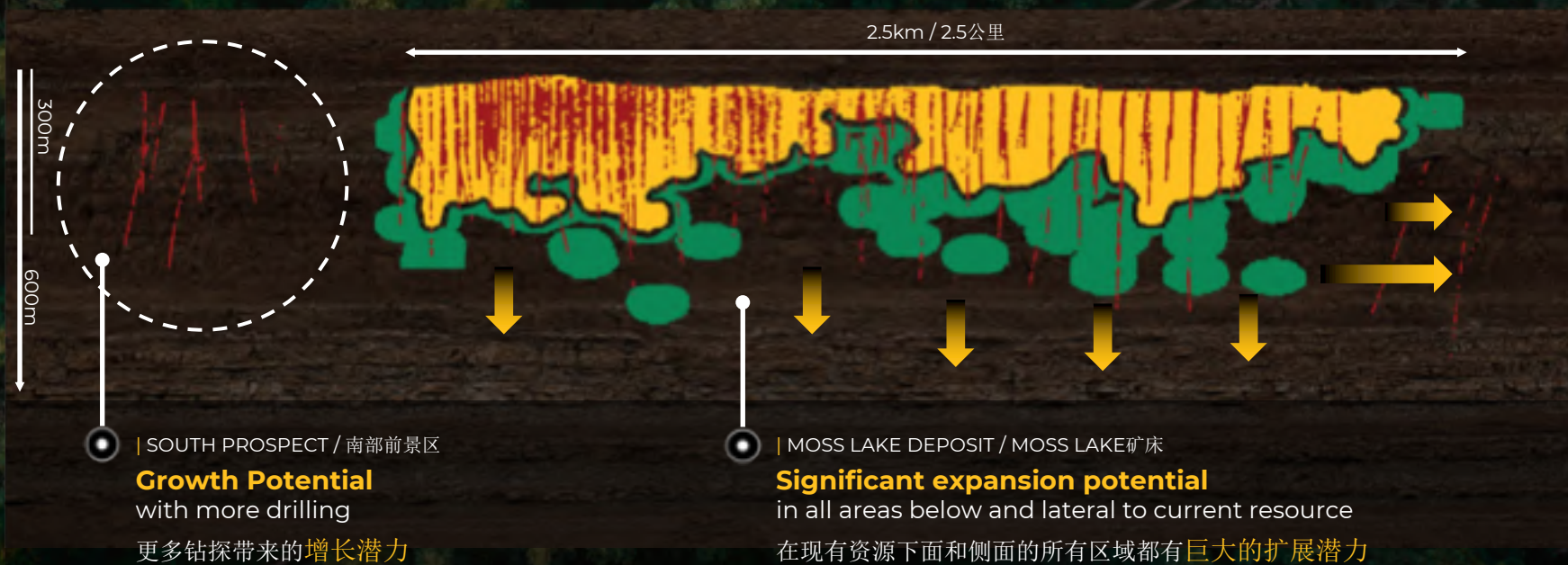
Logging area (400m capacity)

岩芯记录区(容纳400米)



Moss Lake Exploration Potential / Moss Lake勘探潜力*

● Indicated / 指示
● Inferred / 推断



Drill hole traces showing assays >0.3 g/t Au / 钻孔痕迹显示检测结果金品位超过0.3克/吨

* See Appendix for Disclaimers & Sources / 见附录中的免责声明和资料来源

Geophysical airborne VTEM survey 地球物理航空VTEM勘测



Service: / 服务:

Heli-borne VTEM / mag survey
直升飞机VTEM/磁力勘测



3,400

line kilometers
to survey entire
landholding

航线公里，勘测整个
矿区土地



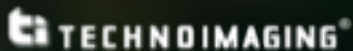
50m spaced lines
over Moss Lake prospect

在Moss Lake探矿区上方航线间隔50米



100m spaced lines
over entire project

整个项目区上方航线间隔100米



Service: / 服务:

Process survey data &
generate 3D target models

处理勘测数据并生成三维靶区
模型

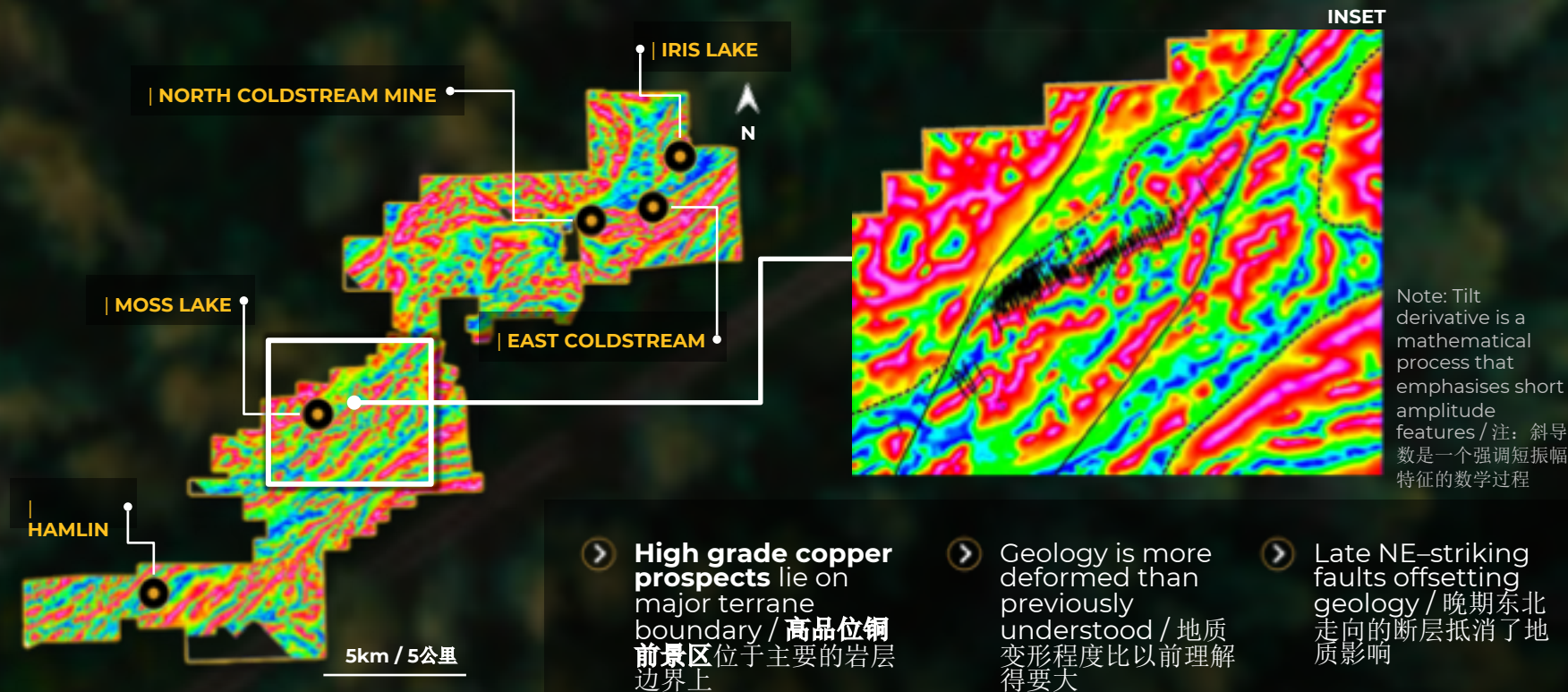


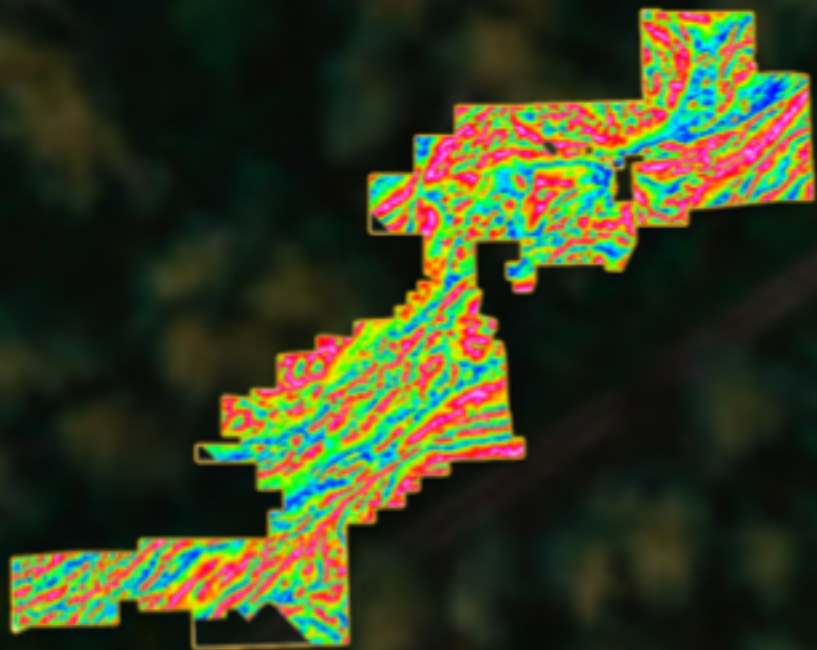
**superior for
depth penetration**
and accurate
3D surveys

深度穿透和精确的三维
测量的优势



Tilt Derivative Magnetics / 斜导数磁学





Projected 100,000m Drilling Program

预计的10万米钻探计划

	Q3 21 (actuals / 实际)	Q4 21 (actuals / 实际)	Q1 22	Q2 22	Q3 22	Q4 22
Moss Lake	1,100	7,500	20,000	25,000	20,000	15,000
Coldstream				2,500	5,000	
Hamlin				2,500	5,000	5,000
GenEx						6,000
Total / 汇总	1,100	7,500	20,000	30,000	30,000	26,000
Cum. Total / 累计汇总	1,100	8,600	28,600	58,600	88,600	104,600
Drill Rigs / 钻机	2	4	4-5	4-5	4-5	4-5

TechnoImaging /

技术成像

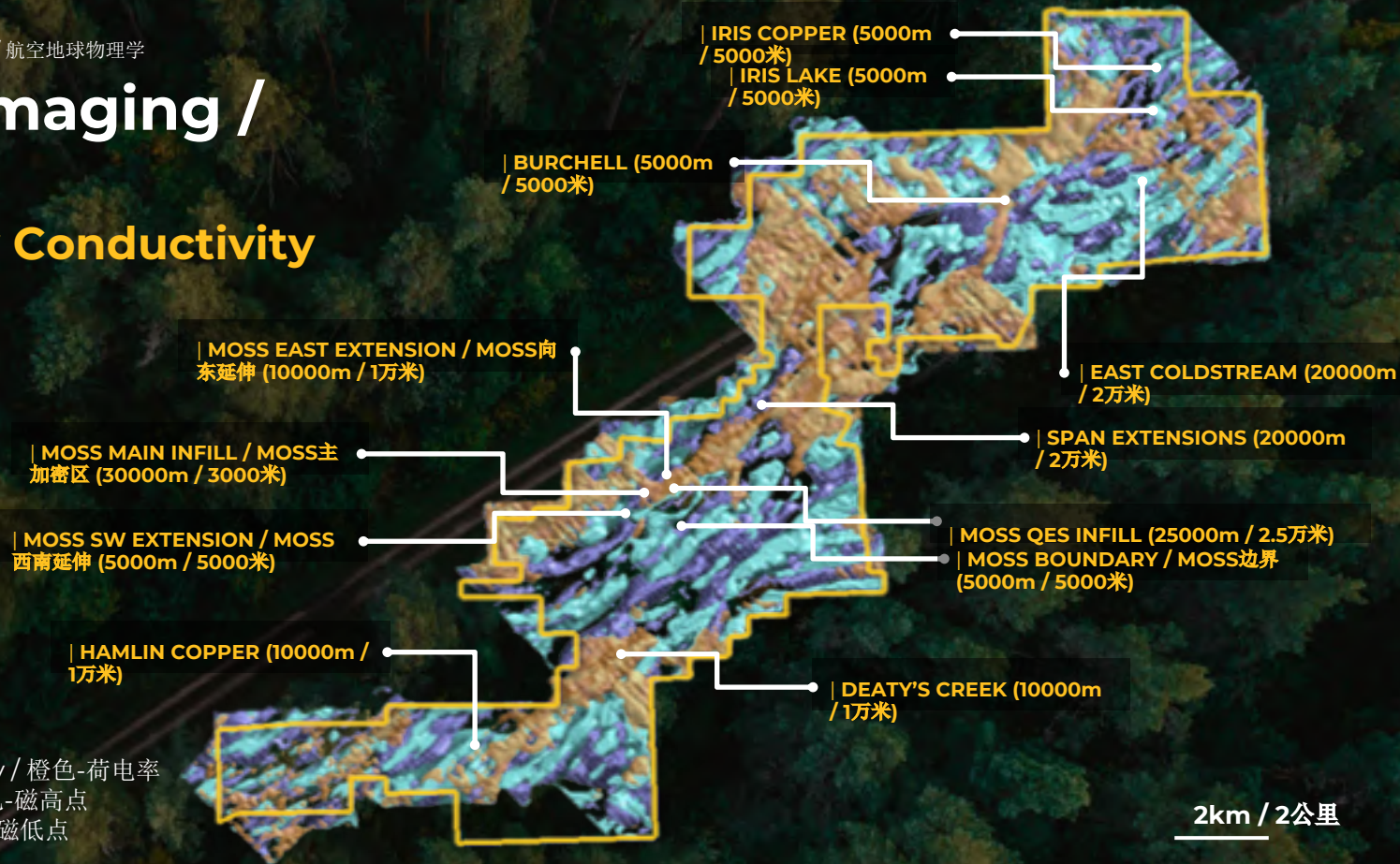
Preliminary Conductivity

初步电导率

Orange – chargeability / 橙色-荷电率

Cyan – mag high / 青色-磁高点

Blue – mag low / 蓝色-磁低点



2km / 2公里

Proposed Goldshore Work Program

拟议的Goldshore工作计划



Metallurgy results show potential to exceed 90% recovery through detailed process test work

冶金结果显示，通过详细的工艺测试工作，采收率有可能超过90%



SAMPLES
样本

8

Drill hole composites / 钻孔复合体
(~25 kg each / 每个约25千克)

1

Bulk surface sample / 大体积地表样本
(116 kg / 116千克)



**DIRECT CYANIDE
LEACH GOLD
RECOVERIES**

直接氰化浸出黄金采收率

80%

Main zone
主区域

85%

QES zone
QES区

< 2%

Gold locked up
锁定的黄金



**BOND WORK
INDEX**

邦德功指数

18.3

kWh/t
千瓦时/吨

Environment, Social, Governance (ESG) 环境、社会、治理(ESG)



Relationships established / 建立良好关系

Ongoing communications and open dialogue with Indigenous representatives with supportive and productive relationship. / 与土著民代表持续沟通和公开对话，建立支持性和富有成效的关系。



Supporting the local community / 支持当地社区

Focus on prioritizing local businesses and where possible, Indigenous businesses and affiliates. / 注重优先考虑本地企业，并在可能的情况下，优先考虑原住民企业和关系。

- A dedicated community engagement team / 一只专注参与社区事务的团队
- Logistics team is fully comprised of Indigenous community members / 物流团队完全由原住民社区成员组成



Environmental footprint / 环境足迹

Environmental baseline study commenced with Indigenous community affiliated consultants. Site clean-up has been completed. / 与土著社区相关顾问开始进行环境基线研究。现场清理工作已经完成。



Moss Lake PEA / Moss Lake初步经济评估

2020; revised from 2013 – Base Case / 2020; 修订自2013年的基准案例

All figures in US \$
所有\$数字为美元

Key Statistics / Parameters / 关键统计数据/参数	Results / 结果	Comments / 意见	Goldshore Strategy / Goldshore策略
Mineable Resource / 可开采的资源量	128,154,775 Tonnes / 吨		● Expand and grow resource size and quality / 扩大和提高资源规模和品质
Total Contained Gold Input / 总的输入金	3,000,684 ounces / 盎司		● Increase grade with drill results or optimising cut off / 利用钻探结果提高品位或优化边际品位
Total Contained Gold Output / 总的产出金	2,439,678 ounces / 盎司		● Substantial Increase / 大幅增加
Mine Life / 矿山寿命 (excluding 4 years pre-production / 不包括生产前的四年)	10 Years / 年		
LOM Grade / 矿山寿命期内品位	0.73 g/t / 克/吨	0.3 g/t cutoff / 边际品位0.3克/吨	
Total Waste / 总废料	377,595,176 Tonnes / 吨		
Total OVB / 总OVB	76,867,692 Tonnes / 吨		
Total Moved / 总转移	582,617,645 Tonnes / 吨		
Total Strip Ratio / 总的剥采比	2.96:1 LOM / 矿山寿命期内		● To be optimised in future studies / 将在未来的研究中进行优化
Daily Mine Production / 日均矿山生产	40,000 Tonnes / 吨	Based on known met test work 基于已知的冶金测试工作	● To be optimised in future studies / 将在未来的研究中进行优化
Daily Processing / 日均处理	15,000 \$1,458		● To be optimised - would look to substantially increase / 有待优化-将有望大幅提升
Gold Recovery (range) / 黄金采收率(区间)	80-85% of feed / 进料		● To be optimised - would look to substantially increase to c.95% / 有待优化-有望大幅增加至约95%
Operating Cash Cost LOM Average 矿山寿命期内平均运营现金成本	\$922 per ounce production / 生产每 盎司		● To be updated with new economics / 将根据新的经济状况进行更新
Average Annual Production 平均年产量	c. 350,000-400,000 Ounces / 盎司		● To be optimised in future studies with focus to substantially increase production profile, on a resource update / 将在未来的研究中进行优化, 重点是在资源量更新时大幅提高产量

Key Project Economics / 关键项目经济指标

2020 vs. 2013 Moss Lake PEA / 2020年与2013年Moss Lake初步经济评估对比

Key statistics / 关键数据:

Mineable Resource / 可开采的资源量	128,154,775 tonnes / 吨
Total Contained Gold Input 总的输入金	3,000,684 ounces / 盎司
Total contained Gold Output 总的产出金	2,439,678 ounces / 盎司

Gold Price	\$1,300	\$1,400	1,546*	\$1,600	\$1,700
NPV 净现值 After-tax / 税后 (2020) Pre-Tax / 税前	\$96 2020: \$174	\$215 vs \$-39 in 2013 2020: \$388 2013: \$118	\$334 vs \$196 in 2013 2020: \$603 2013: \$353	\$453 vs \$283 in 2013 2020: \$817 2013: \$440	\$572 vs \$444 in 2013 2020: \$1,032 2013: \$601
IRR 内部收益率 After-tax / 税后 (2020) Pre-Tax / 税前	9% 2020: 12%	14% vs 3% in 2013 2020: 19% 2013: 10%	18% vs 12% in 2013 2020: 24% 2013: 17%	21% vs 15% in 2013 2020: 28% 2013: 19%	24% vs 19% in 2013 2020: 32% 2013: 23%
BASE CASE / 基准					CURRENT GOLD PRICE / 当前金价: \$1,770

Trading comparables / 交易可比性

Market Cap / Attributed Resource 市值/归属资源量 CAD \$ / oz Au Eq 加元/盎司黄金当量		\$15	\$17	\$21	\$22	\$33	\$39	\$36	\$41	\$76	\$89	\$183
		Goldshore Resources	Troilus Gold	First Mining Gold	Moneta Porcupine	Mayfair Gold	Treasury Metals	Integra Resources	Perpetua Resources	Maple Gold Mines	Probe Metals	Marathon Gold
Flagship Project / 旗舰项目		Moss Lake	Troilus	Springpole	Porcupine	Fenn-Gib	Goliath / Goldlund	Delamar	Stibnite	Douay Gold	Val-d'Or East	Valentine Lake
Location / 位置		Ontario / 安大略省	Québec / 魁北克省	Ontario / 安大略省	Ontario / 魁北克省	Ontario / 安大略省	Ontario / 安大略省	Idaho / 爱达荷州	Idaho / 爱达荷州	Québec / 魁北克省	Québec / 魁北克省	Newfoundland & Labrador / 纽芬兰和拉布拉多省
Stage / 阶段		Resource / 资源量	PEA	PFS	PEA	Resource / 资源量	PEA	PEA	Feas. / 可行性研究	Resource / 资源量	Resource / 资源量	Feas. / 可行性研究
Market Cap / 市值	CAD / 加元	\$60M	\$136M	\$203M	\$186M	\$70M	\$98M	\$159M	\$330M	\$105M	\$304M	\$759M
M&I / 测定和指示	koz AuEq / 千盎司黄金当量	1,474	4,960	6,794	3,967	2,078	1,965	3,940	6,628	211	866	3,140
Inferred / 推断	koz AuEq / 千盎司黄金当量	2,515	3,150	2,951	4,399	75	528	507	1,338	1,176	2,558	1,000
M&I Grade / 测定和指示品位	g/t AuEq / 黄金当量克/吨	1.08	0.87	1.01	0.89	0.92	1.1	0.71	1.56	1.52	1.85	1.72
Inferred Grade / 推断品位	g/t AuEq / 黄金当量克/吨	0.98	0.84	0.58	0.89	0.62	0.72	0.56	1.15	1.03	2.04	1.7

Open pit projects in Canada / 加拿大的露天矿项目



MEASURED
& INDICATED / 测定和指示

1.08 g/t Au /
金品位**1.08**克/吨

1.47M oz Au /
147万盎司 黄金

INFERRED / 推断

0.98 g/t Au /
金品位**0.98**克/吨

2.51M oz Au /
251万盎司 黄金

	0.82 g/t Au / 克/吨黄金	0.87 g/t Au / 克/吨黄金	0.97 g/t Au / 克/吨黄金	1.12 g/t Au / 克/吨黄金	1.13 g/t Au / 克/吨黄金	1.27 g/t Au / 克/吨黄金
Location / 位置	Detour Lake	Rainy River	Côté Lake	Canadian Malartic	Magino	Hardock
Owner / 所有者	Kirkland Lake	New Gold	IAMGOLD	Agnico Eagle / Yamana	Argonaut	Equinox / Orion
Development Stage / 开发阶段	Production / 生产	Production / 生产	Construction / 建设	Production / 生产	Feasibility / 可行性	Feasibility / 可行性
Contained Reserves / 包含储量	15,775	1,926	7,284	4,428	2,136	5,539

How Goldshore stacks up to several of its peers who followed a similar development path to the Moss Lake Project
Goldshore与几个遵循类似于Moss Lake项目开发路径的同行相比如何

Open pit project transactions / 露天矿项目交易

EV / Attr. Resources

企业价值/归属资源量

EV / Attr. Reserves / 企业价值/归属储量

US \$ / oz Au Eq / 美元/黄金当量盎司

\$36
\$71

\$81
-

\$70
\$110

\$710
\$239

\$338
\$339

Rainy River

Côté

Detour

Detour

Acquiror / 收购方	New Gold	IAMGOLD	Sumitomo	Kirkland Lake	Agnico Eagle Mines
Project / 项目	Rainy River	Trelawney	Côté (30%)	Detour Lake	Detour Lake
Announcement Date / 宣布日期	May 31, 2013 / 2013年5月31日	Apr 27, 2012 / 2012年4月27日	Jun 5, 2017 / 2017年6月5日	November 25, 2019 / 2019年11月25日	November 26, 2021 / 2021年11月26日
Transaction Type / 交易类型	Corp. Acq. / 企业收购	Corp. Acq. / 企业收购	JV / Asset Acq. / 合资企业/资产收购	Corp. Acq. / 企业收购	Merger / 合并
Asset Stage at Announcement / 宣布时的资产阶段	Feas. / 可行性	Resource / 资源量	PFS	Production / 生产	Production / 生产
% of Asset Acquired / 收购的资产比重	100%	92.5%	30%	100%	50%
Transaction Value / 交易价值	USD / 美元	\$301M / 3.01亿美元	\$517M / 5.17亿美元	\$195M / 1.95亿美元 (\$650M implied value at 30% / 6.5亿美元隐含价值的30%)	\$3.68B / 36.8亿美元 \$5.34B / 53.4亿美元 (\$10.68B total value / 总价值106.8亿美元)
Acquired Reserves & Resource / 收购的储量和资源量					
Attributed Reserves / 归属储量	Koz AuEq / 千盎司黄金当量	4,214 (100% acquired / 100%收购)	-	Côté (30%)	15,775 (100% acquired / 100%收购)
Attributed Resource / 归属资源量	Koz AuEq / 千盎司黄金当量	8,447 (100% acquired / 100%收购)	6,355 of 6,870 total / 总数6870中的6355	Jun 5, 2017 / 2017年6月5日	5,191 (100% acquired / 100%收购)
Market Factors / 市场因素					
Spot Gold Price / 现货金价	US \$ / oz / 美元/盎司	\$1,394	\$1,663	PFS	\$1,458
CAD / USD Dollar / 加元/美元汇率		0.97	1.02	30%	0.75

Capital Structure / 资本结构

Ticker
代码

TSX.V: GSHR
OTC:GSHRF
8X00.F

Common Shares Issued (Escrowed)
已发行的普通股(托管)

115.5M / 1.155亿股^{**}

Two Rounds of Public Financing /
两轮公开融资
(Feb 2021 / 2021年2月)
(Nov 2021 / 2021年11月)

36.2M / 3620万股 All
free-trading / 全部自由交易
16.0M / 1600万股⁴
Month hold / 限售4个月

Total Common Shares / 总的普通股

116M / 1.16亿股

Current Free-Float / 当前自由流通

40M / 4000万股^{*}

up to: Jan 16, 2022 / 截至: 2022年1月16日

^{*} All common shares in Goldshore, and the Goldshore shares issued to Wesdome are subject to resale restrictions ranging from 12 month to 36 month release schedules (first tranches released in four months from trade date). / Goldshore的所有普通股以及向Wesdome发行的Goldshore股票都受到12个月至36个月的转售限制(第一批股票在交易日起四个月后解禁)。

Warrants / 权证^{**}

Nil / 无

Options / 期权^{**}

8.8M / 880万份
granted / 已授予
(3 year vesting schedule / 3年的行权计划)

Cash / 现金 (as of Jan 1, 2022 / 截至2022年1月1日)

\$16.2M / \$1620万

GOLDSHORE RESOURCES | TSX.V:GSHR | OTC:GSHRF

Wesdome Gold Mines is a 26% shareholder
in Goldshore Resources
Wesdome Gold Mines是持有Goldshore
Resources股份26%的股东



- 26% Wesdome Gold Mines Ltd.
- 34% Institutional Investors / 机构投资者
- 40% Retail Investors / 散户投资者

Management, Board, Advisory Board and Insiders / 管理层、
董事会、顾问委员会和内部人士: 25%

^{**} Does not include any Compensation Warrants that may be issued in conjunction with the closing of the RTO or any options or other equity incentives issued under an equity incentive plan. / 不包括可能在RTO结束时发行的任何补偿权证或根据股权激励计划发行的任何期权或其他股权激励。

The Goldshore Opportunity / Goldshore的机遇



Strong management, technical team and board with deep experience and track record of value creation / **强大的管理层、技术团队和董事会**，有深厚的经验和创造价值的履历



Low risk jurisdiction in Ontario with a rich mining history / **安大略省的低风险管辖区**，有丰富的采矿历史



Drilling focused on three key deposits along a +20 km mineral trend / **钻探重点是**沿着20多公里的矿产趋势带上的**三个关键矿床**



Active 100,000m drill program and additional exploration activities / **规划了100,000米的积极钻探计划**和其他勘探活动



Targeting an updated **multi-million ounce gold resource** with significant growth potential / **目标是更新数百万盎司黄金资源量**，且有显著的增长潜力



Attractive economics and valuation with tight share structure. Significant leverage to rising gold prices / **有吸引力的经济效益和估值，股份结构紧凑**。对金价上涨有显著的杠杆作用



**GOLD
SHORE**

GOLDSHORE RESOURCES INC.
TSX.V:GSHR | OTC:GSHRF | 8X00.F

For more information,
please contact

欲了解更多信息，请联系

Brett Richards
CEO & Director / 首席执行官兼董事

M. 905-449-1500
O. 604-288-4416
info@goldshorerresources.com

1030 West Georgia St, Suite 918
Vancouver, BC, V6E 2Y3



GoldShoreResources.com



@GoldShoreRes

Forward Looking Statements / 前瞻性声明

Forward-Looking Information

This presentation contains "forward looking statements" regarding the Company within the meaning of applicable securities legislation, including statements as to future events, results and plans. Forward-looking statements are sometimes but not always identified by such words as "targeted", "can", "will", "anticipates", "projects", "expects", "intends", "likely", "plans", "should", "could" or "may" or grammatical variations thereof. These include, without limitation, statements with respect to: the Company's use of available funds; mining operations, anticipated mineral recoveries, projected quantities of future mineral production, interpretation of drill results and other technical data; anticipated development, expansion and exploration activities; viability of the Company's projects and properties; completion of proposed transactions and financings, and the terms of such transactions and financings; the acquisition of additional property rights; possible events, conditions or financial performance that is based on assumptions about future economic conditions and courses of action; the strategic plans, timing, costs and expectations for the Company's future exploration on its properties; information with respect to grades from sampling results and drilling results; and the accessibility of future exploration activities at the Company's properties. These forward-looking statements reflect the Company's current beliefs and are based on information currently available to the Company and assumptions the Company believes are reasonable. The Company has made various assumptions, including, among others, that: the historical information related to the Company's properties is reliable; the Company's operations are not disrupted or delayed by unusual geological or technical problems; the Company has the ability to explore and develop the Company's properties; the Company will be able to raise any necessary additional capital on reasonable terms to execute its business plan; the Company's current corporate activities will proceed as expected; general business and economic conditions will not change in a material adverse manner; budgeted costs and expenditures are and will continue to be accurate; and the effects of by COVID-19 on the operations of the Company will remain consistent with the Company's expectations.

Actual results and developments may differ materially from results and developments discussed in the forward-looking statements as they are subject to a number of significant risks and uncertainties, including: public health threats; fluctuations in metals prices, price of consumed commodities and currency markets; future profitability of mining operations; access to personnel; results of exploration and development activities; accuracy of technical information; risks related to ownership of properties; risks related to mining operations; risks related to mineral resource figures being estimates based on interpretations and assumptions which may result in less mineral production under actual conditions than is currently anticipated; the interpretation of drilling results and other geological data; receipt, maintenance and security of permits and mineral property titles; environmental and other regulatory risks; changes in operating expenses; changes in general market and industry conditions; changes in legal or regulatory requirements; and other risk factors set out in the Company's public disclosure documents. Although the Company has attempted to identify significant risks and uncertainties that could cause actual results to differ materially, there may be other risks that cause results not to be as anticipated, estimated or intended. Certain of these risks and uncertainties are beyond the Company's control. Consequently, all of the forward looking statements are qualified by these cautionary statements, and there can be no assurances that the actual results or developments will be realized or, even if substantially realized, that they will have the expected consequences or benefits to, or effect on, the Company.

The information contained in this presentation is derived from management of the Company and otherwise from publicly available information and does not purport to contain all of the information that an investor may desire to have in evaluating the Company. The information has not been independently verified, may prove to be imprecise, and is subject to material updating, revision and further amendment. While management is not aware of any misstatements regarding any industry data presented herein, no representation or warranty, express or implied, is made or given by or on behalf of the Company as to the accuracy, completeness or fairness of the information or opinions contained in this presentation and no responsibility or liability is accepted by any person for such information or opinions. The forward-looking statements and information in this presentation speak only as of the date of this presentation and the Company assumes no obligation to update or revise such information to reflect new events or circumstances, except as may be required by applicable law. Although the Company believes that the expectations reflected in the forward-looking statements and information are reasonable, there can be no assurance that such expectations will prove to be correct. Because of the risks, uncertainties and assumptions contained herein, prospective investors should not read forward-looking information as guarantees of future performance or results and should not place undue reliance on forward-looking information. Nothing in this presentation is, or should be relied upon as, a promise or representation as to the future.

To the extent any forward-looking statement in this presentation constitutes "future-oriented financial information" or "financial outlooks" within the meaning of applicable Canadian securities laws, such information is being provided to demonstrate the anticipated market penetration and the reader is cautioned that this information may not be appropriate for any other purpose and the reader should not place undue reliance on such future-oriented financial information and financial outlooks. Future-oriented financial information and financial outlooks, as with forward-looking statements generally, are, without limitation, based on the assumptions and subject to the risks set out above. The Company's actual financial position and results of operations may differ materially from management's current expectations and, as a result, the Company's revenue and expenses. The Company's financial projections were not prepared with a view toward compliance with published guidelines of International Financial Reporting Standards and have not been examined, reviewed or compiled by the Company's accountants or auditors. The Company's financial projections represent management's estimates as of the dates indicated thereon.

Disclaimers & Sources / 免责声明和资料来源

* Moss Lake Historical Mineral Resource & Historical Production

The reader is cautioned that the referenced “historical mineral resource” estimates are considered historical in nature and as such is based on prior data and reports prepared by previous property owners. A qualified person has not done sufficient work to classify the historical estimates as current resources and Goldshore is not treating the historical estimates as current resources. Significant data compilation, re-drilling, re-sampling and data verification may be required by a qualified person before the historical estimate on the Project can be classified as a current resource. There can be no assurance that any of the historical mineral resources, in whole or in part, will ever become economically viable. In addition, mineral resources are not mineral reserves and do not have demonstrated economic viability. Even if classified as a current resource, there is no certainty as to whether further exploration will result in any inferred mineral resources being upgraded to an indicated or measured mineral resource category.

Sources:

- Poirier, S., Patrick, G.A., Richard, P.L., and Palich, J., 2013. Technical Report and Preliminary Economic Assessment for the Moss Lake Project, 43-101 technical report prepared for Moss Lake Gold Mines Ltd.
- McCracken, T., 2011. Technical Report and Resource Estimate on the Osmani Gold Deposit, Coldstream Property, Northwestern Ontario, 43-101 technical report prepared for Foundation Resources Inc. and Alto Ventures Ltd.
- Schlanka, R., 1969. Copper, Nickel, Lead and Zinc Deposits of Ontario, Mineral Resources Circular No. 12, Ontario Geological Survey, pp. 314-316.