



公司报告

随着世界向以锂电池为动力的绿色能源解决方案转变，
我们的使命是成为勘探和开发世界级锂和电池金属矿
业资产的领导者。

CSE: AWLI | OTC: AMRWF | FSE: 5HV0 | Q4 2021

内华达州 Clayton Valley

法律信息



THIS MANAGEMENT PRESENTATION (The "presentation") was prepared as a summary overview only of the current affairs of Ameriwest Lithium Corp ("Ameriwest Lithium" or the "company") and was not prepared for the purpose of assisting prospective investors in making a decision to invest in Ameriwest Lithium. Information disclosed in this presentation is current as of January 2021, except as otherwise provided herein and Ameriwest Lithium does not undertake or agree to update this presentation after the date hereof. All information contained in this presentation is derived solely from management of Ameriwest Lithium and otherwise publicly available third-party information that has not been independently verified by the company. Further, the company does not make any representation as to the completeness, truth or accuracy of the information contained in this presentation. The company expressly warns readers not to rely on the information contained herein as advice (legal, financial, tax or otherwise) to current or potential investors. Accordingly, any use of this information is at your risk and without liability to the company. This presentation does not constitute and should not be construed as either a public or private offer to sell or the solicitation of an offer to purchase securities in the capital stock of Ameriwest Lithium in any jurisdiction in which such offer, solicitation or sale would be unlawful. Each prospective investor should contact his/her or its own legal adviser, independent financial adviser or tax adviser for legal, financial or tax advice regarding investment related decisions respecting the securities of the company. No person has been authorized to give any information or make any representation other than that contained in this presentation and, if given and/or made, such information or representations must not be relied upon as having been so authorized.

FORWARD-LOOKING INFORMATION This Presentation contains certain statements, which may constitute "forward-looking information" within the meaning of Canadian securities law requirements. Forward-looking information involves statements that are not based on historical information but rather relate to future operations, strategies, financial results or other developments. Forward-looking information is necessarily based upon estimates and assumptions, which are inherently subject to significant business, economic and competitive uncertainties and contingencies, many of which are beyond Ameriwest Lithium's control and many of which, regarding future business decisions, are subject to change. These uncertainties and contingencies can affect actual results and could cause actual results to differ materially from those expressed in any forward-looking statements made by or on Ameriwest Lithium's behalf. Although Ameriwest Lithium has attempted to identify important factors that could cause actual actions, events or results to differ materially from those described in forward-looking information, there may be other factors that cause actions, events or results to differ from those anticipated, estimated or intended. All factors should be considered carefully, and readers should not place undue reliance on Ameriwest Lithium's forward-looking information. Examples of such forward-looking information within this Presentation include statements relating to the future price of minerals, future capital expenditures, success of exploration activities, mining or processing issues, government regulation of mining operations and environmental risks. Generally, forward-looking information can be identified by the use of forward-looking terminology such as "expects," "estimates," "anticipates," or variations of such words and phrases (including negative and grammatical variations) or statements that certain actions, events or results "may," "could," "might" or "occur."

FORWARD-LOOKING STATEMENTS are not guarantees of future performance and involve risks, uncertainties and assumptions, which are difficult to predict. Assumptions underlying Ameriwest Lithium's expectations regarding forward-looking statements or information contained in this Presentation include, among others, Ameriwest Lithium's ability to comply with applicable governmental regulations and standards, its success in implementing its strategies, achieving its business objectives, the ability to raise sufficient funds from equity financings in the future to support its operations, and general business and economic conditions. The foregoing list of assumptions is not exhaustive. Prospective investors reading this Presentation are cautioned that forward-looking statements are only predictions, and that Ameriwest Lithium's actual future results or performance are subject to certain risks and uncertainties including risks related to Ameriwest Lithium's mineral properties being subject to prior unregistered agreements, transfers or claims and other defects in title; risks related to Ameriwest Lithium's history of losses, which may continue in the future; risks related to increased competition and uncertainty related to additional financing that could adversely affect its ability to attract necessary capital funding or obtain suitable properties for mineral exploration in the future; risks related to its officers and directors becoming associated with other natural resource companies, which may give rise to conflicts of interest; uncertainty and volatility related to stock market prices and conditions; further equity financing(s), which may substantially dilute the interests of Ameriwest Lithium's shareholders; risks relating to its exploration operations; dependence on general economic, market or business conditions; changes in business strategies; environmental risks and remediation measures; and changes in laws and regulations.

FORWARD-LOOKING ASSUMPTIONS/ESTIMATES in this Presentation reflects Ameriwest Lithium's current views with respect to future events and are necessarily based upon a number of assumptions and estimates that, while considered reasonable by Ameriwest Lithium, are inherently subject to significant business, economic, competitive, political and social uncertainties and contingencies. Many factors, both known and unknown, could cause actual results, performance or achievements to be materially different from the results, performance or achievements that are or may be expressed or implied by such forward-looking information contained in this Presentation and documents incorporated by reference, and we have made assumptions based on or related to many of these factors. Such factors include, without limitation: fluctuations in spot and forward markets for silver, gold, base metals and certain other commodities (such as natural gas, fuel oil and electricity); restrictions on mining in the jurisdictions in which Ameriwest Lithium operates; laws and regulations governing our operation, exploration and development activities; its ability to obtain or renew the licenses and permits necessary for the operation and expansion of its existing operations and for the development, construction and commencement of new operations; risks and hazards associated with the business of mineral exploration, development and mining (including environmental hazards, potential unintended releases of contaminants, industrial accidents, unusual or unexpected geological or structural formations, pressures, cave-ins and flooding); inherent risks associated with tailings facilities and heap leach operations, including failure or leakages; the speculative nature of mineral exploration and development; the inability to determine, with certainty, production and cost estimates; inadequate or unreliable infrastructure (such as roads, bridges, power sources and water supplies); environmental regulations and legislation; the effects of climate change, extreme weather events, water scarcity, and seismic events, and the effectiveness of strategies to deal with these issues; risks relating to Ameriwest Lithium's exploration operations; fluctuations in currency markets (such as the US dollar versus the Canadian dollar); the volatility of the metals markets, and its potential to impact our ability to meet its financial obligations; Ameriwest Lithium's ability to recruit and retain qualified personnel; employee relations; disputes as to the validity of mining or exploration titles or claims or rights, which constitute most of its property holdings; Ameriwest Lithium's ability to complete and successfully integrate acquisitions; increased competition in the mining industry for properties and equipment; limited supply of materials and supply chain disruptions; relations with and claims by indigenous populations; relations with and claims by local communities and non-governmental organizations; the effectiveness of its internal control over financial reporting; claims and legal proceedings arising in the ordinary course of business activities.

Forward-looking information is made based on management's beliefs, estimates and opinions and are given only as of the date of this Presentation. Ameriwest Lithium undertakes no obligation to update forward-looking information if these beliefs, estimates and opinions or other circumstances should change, except as may be required by applicable law. **Current and potential investors should not place undue reliance on forward-looking statements due to the inherent uncertainty therein. All forward-looking information is expressly qualified in its entirety by this cautionary statement.**

HISTORIC RESOURCES This Presentation contains information on samples from, and geological features regarding Nevada's Deer Musk East property claims, Railroad Valley and Edwards Creek Valley properties as well as Arizona's Thompson Valley property claims as historic data from previously published public information. **A qualified person has not done sufficient work to classify any of the references discussed in this Presentation as current mineral resources or mineral reserves and these estimates are being treated as historical in nature and not as current mineral resources or mineral reserves. Accordingly, these historical estimates are presented only for the purposes of assisting in describing the extent of lithium mineralization and to outline the exploration potential. Any historic samples are by their nature selective and are not necessarily indicative of the general geology or grade within the property(s) and are not contained in a National Instrument 43-101 report and are provided for context only. These estimates should not be relied upon for assessing the merits of the Ameriwest Lithium properties.** This presentation also contains information on other mines, deposits and businesses in areas surrounding the Company's properties / target properties. This information has been Sourced from Wikipedia, relevant company reports, and other publicly available information. A qualified person has not done sufficient work to classify any of the estimates discussed in this Presentation relative to current mineral resources, mineral reserves or commercial production viability.

亮点



项目亮点

位于美国西南部，包括内华达州的Clayton Valley、Edwards Creek和Railroad Valleys，以及亚利桑那州中部的Thompson Valley。

正确的行业、合适的时机

电池动力汽车的普及和生产的增加正在推动锂的需求，这一需求将同比增长23%-33%。

成熟的锂产区

Ameriwest的锂项目区位于已知的锂资源区域内，我们的Deer Musk East项目距离北美唯一的在产锂矿不到5英里。

强大的股权结构、资金充足

有吸引力的股权结构和充足的资金将有助于实现我们最初的勘探目标，并继续专注于资本效率和风险缓解。

经验丰富的管理层

公司团队在金融和矿业方面有丰富的经验，并且拥有开发矿产项目方面的经验，从草根勘探到出售，再到大型采矿公司运营。

投资亮点

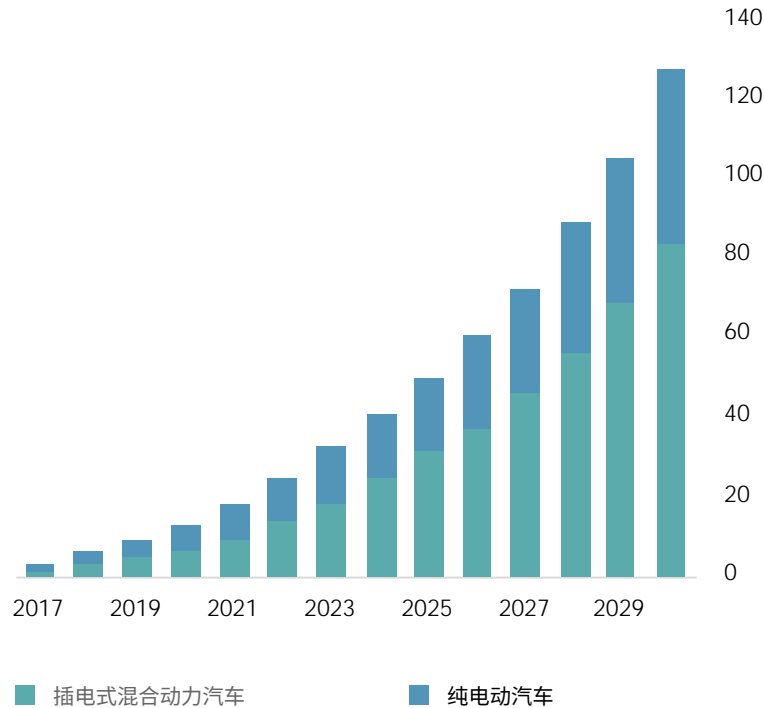
- 2021年3月的苏伊士运河瓶颈凸显了全球石油供应的脆弱性和对供应链通道和替代能源的需求。
- 当前的锂市场大约是35万吨，预计到2025年将增长到大约100万吨的规模，为满足供应链的这种增长需要在当前筹集资金和投资，而不是在两三年内。(来源: northermminer.com)
- 去碳化已经成为极化的趋势，虽然有全球疫情，这确定了2021年是一个关键的年份。
- 能源转型的关键：原材料的供应安全，特别是高纯度锂。作为2018-2019年市场特点的锂供应过剩即将结束，投资者正在推动股价上涨。
- 随着各国政府努力发展本土的锂矿供应链和制定补贴计划，市场正在争相寻找优质的锂矿资源。
- 不是所有的锂都是一样的，开发国内低成本的可持续供应链是一个关键的市场驱动力。电动汽车需要高纯度的锂化学品，而陶瓷和润滑剂可以使用较低纯度的锂。锂的价格正在上升，并且随着电动车销售的持续增长，还有上升的空间。
- 在整个行业中，人力创新和资本供应是显而易见的。最近，Albemarle (275亿美元)、SQM (159亿美元)、Lithium Americas (36亿美元)、Piedmont Lithium (11亿美元)、Vulcan Resources (12.6亿美元)和Sigma Lithium (11亿美元)等公司筹集了大量资金，证明了锂行业的不断复苏。

锂市场

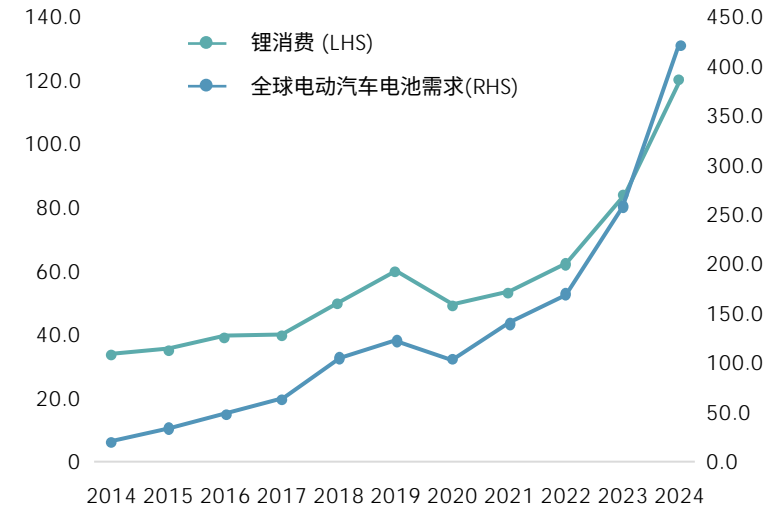
“锂的价格继续飙升
- 2021年上涨
88%。”

MINING.COM | 2021年3月15日

国际能源署预计到2030年将有1.2亿辆
电动汽车



锂消费 vs 电动汽车电池需求



	2020	2024
电动汽车年度产量	340万	1270万
锂需求	47.3 千吨	177.4千吨

<https://www.grandviewresearch.com/industry-analysis/lithium-ion-battery-market>

来源：国际能源署，全球电动汽车展望2018

锂产区

对美国西南部兴趣浓厚。

新的和未开发的锂矿的前景越来越好，正在推动整个地区的信心和投资。

Ameriwest已经在这个竞争激烈的地区收集了4个有前景的项目。



内华达州的锂热潮

Albemarle的Silver Peak矿（北美唯一的在产锂矿）、最近的重大锂发现、新的提取工艺和不断增加的特斯拉超级工厂，都使内华达州成为北美最热门的锂矿勘探地区。

- ✓ 根据2019-2020年弗雷泽研究所对矿业公司的调查，内华达州在全球104个辖区中的投资吸引力指数排名第一。
- ✓ Silver Peak位于Clayton Valley（内华达州Esmeralda县），在去年锂价飙升后，已出现了疯狂的矿权区标桩的场景。
- ✓ Railroad valley在地质上与附近的Clayton Valley相似，具有巨大的发现锂的潜力。
- ✓ Railroad Valley是一个大得多的盆地；与Clayton Valley相比，开发程度较低。鉴于区域地质和最近的勘探成功，它可能成为北美锂盐的下一个重要来源。





内华达州 RAILROAD VALLEY

下一波锂勘探热潮

RAILROAD VALLEY是下一个CLAYTON VALLEY吗?



Railroad Valley盆地是一个绿地锂矿靶区，人们认为与Clayton Valley相似，在西南偏西方向仅200公里。

- ✓ 有蒸发岩
- ✓ 被火山岩所包围（已知的锂来源）
- ✓ 地表样本中显示沉积物中有锂
- ✓ 大规模的重力测试低点
- ✓ 可能拥有含有厚的饱和沉积物地层的深盆地
- ✓ 封闭的、以断层为界的盆地谷地
- ✓ 干涸的湖床（干荒盆地）
- ✓ 利于蒸发蒸腾
- ✓ 近地表水出现



RAILROAD VALLEY可能更好 ...



Railroad Valley巨大重力低值是一个地质特征，为地下含锂盐水或含水层的存在提供线索



规模与阿根廷的Salinas Grandes盐田相当；可能是世界上最好的锂资源之一。如果与附近生产的Clayton Valley相比，整个Railroad Valley的规模是其两倍。



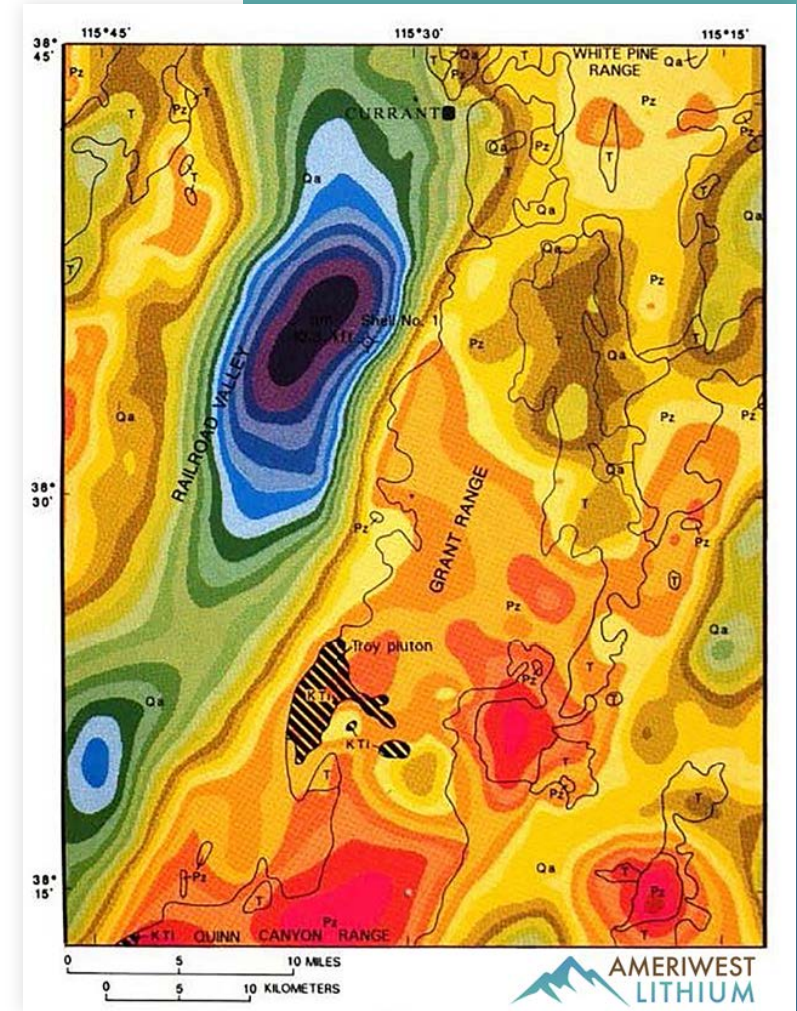
虽然Railroad Valley在地质上与附近的Clayton Valley有许多重要的相似之处，但它的不同之处在于，它代表了一个新的、几乎未被开发的靶区，只有少数几家公司位于该地，而不像Clayton Valley的租赁区，许多公司在竞争，土地持有分散。



水权也是一个积极因素，Railroad Valley内不存在水权竞争。与此形成鲜明对比的是，Clayton Valley的水权仅由两家公司持有，其中一家价值数十亿美元的Albemarle对任何进一步的申请提出异议。



历史上的石油钻探活动和地震勘测为寻找潜在的盐水含水层积累了宝贵的数据。



RAILROAD VALLEY对比CLAYTON VALLEY



锂勘探的有利因素	CLAYTON VALLEY	RAILROAD VALLEY
盆地充填深度	328' 至 > 4,002' (100米至> 1,220米)	3,937' 至 9,514' (1,200米至2,900米)
干湖床（干荒盆地）面积	38.6平方英里 (100平方公里)	135 平方英里 (350 平方公里)
盆地集水总面积	~1,699平方英里~4,400平方公里	~4,131平方英里~10,700平方公里
盆地数量	3	4
土壤样品中的锂	200-500 ppm 锂	150-280 ppm 锂 高达 500 ppm
可用的油井数据揭示了锂卤水层	✘	✔
水权有利的市场	✘	✔
潜在的锂源岩	✔	✔
正在进行锂勘探	✔	✔
封闭的盆地	✔	✔
蒸散	✔	✔
存在蒸发岩	✔	✔
存在温泉	✔	✔
断层和圈闭岩石充填	✔	✔

RAILROAD锂项目



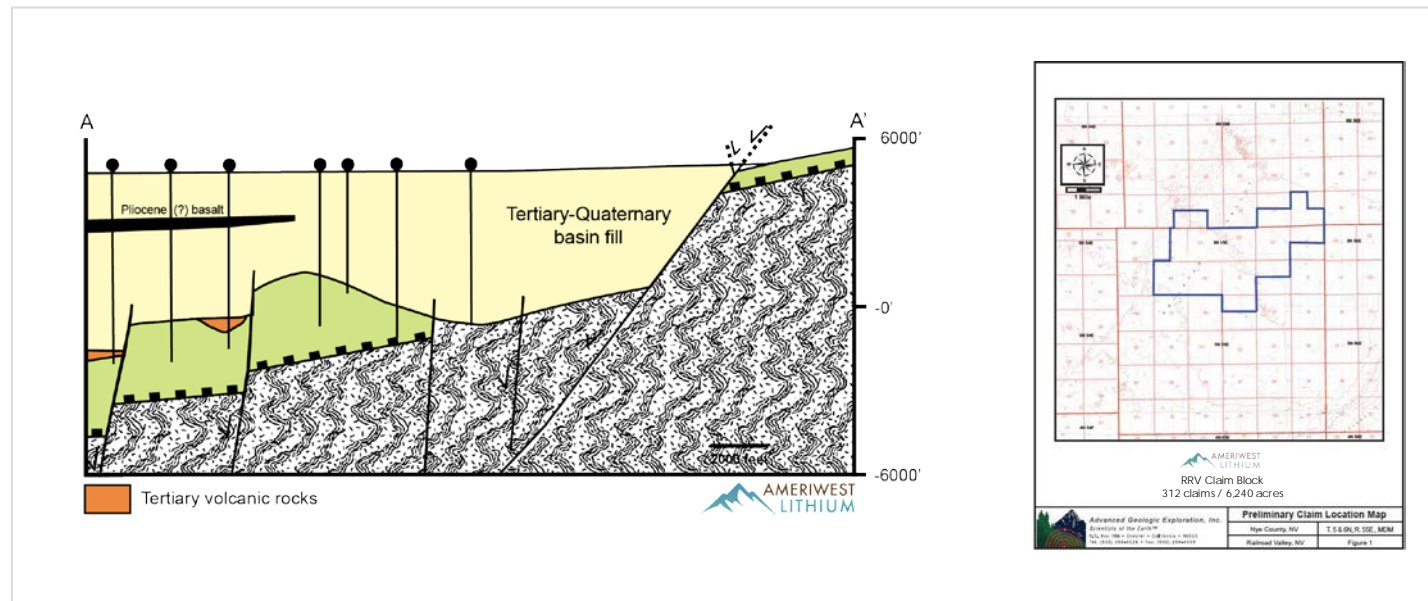
Ameriwest的Railroad项目包括6240英亩，共有312个冲积矿权区，位于东55区北5镇附近。



在项目区域内，似乎有几个有利于锂盐水层形成的因素汇集在一起，包括一个被蒸发性泥沙覆盖的深层水文储层。



由于大量的石油和天然气勘探工作，Railroad Valley提供了重要的历史勘探数据。



Railroad Valley的盆地特征，靠近基础设施，以及内华达州稳定和矿业友好的政府，这都提供了一个令人信服的理由来提升在该地区的锂矿勘探活动。

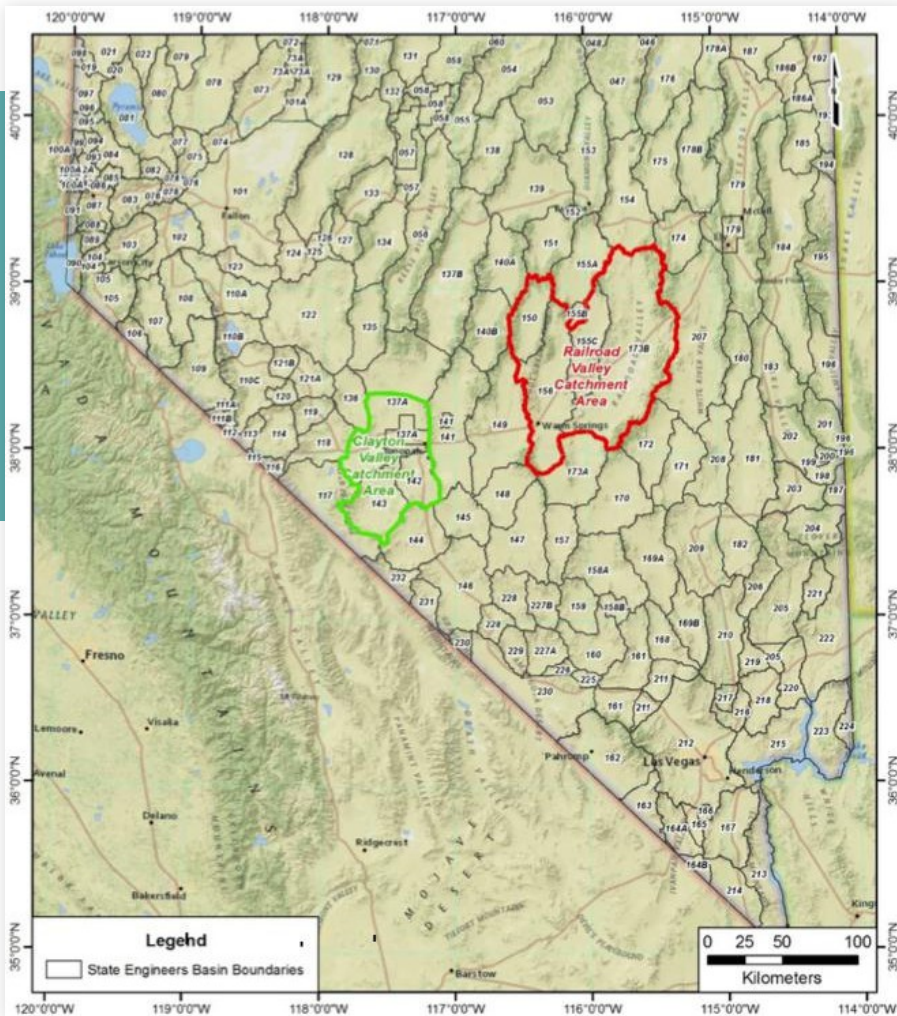


在Railroad Valley东北方向大约48英里（约77公里）处是内华达州的Ely，那里有住宿、技术工人和重型设备。



向北约125英里（200公里）是Eiko，那里有钻探/采矿承包商和服务。

RAILROAD锂项目



Railroad Valley有一些独特的地质属性，可能会提高锂矿化结构的发生率。

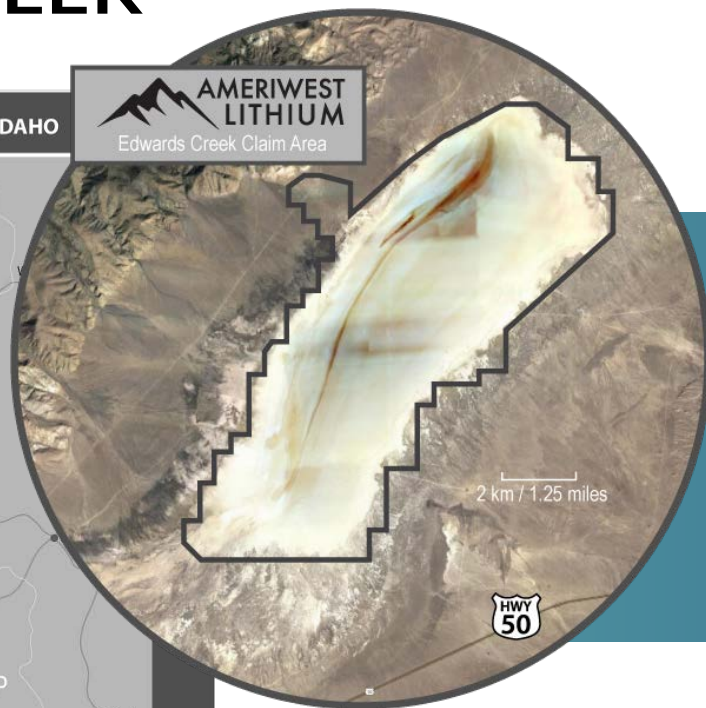
该地区在结构上受到活跃的构造环境的控制。这导致在该地区的西北和西侧边缘出现了火山活动，包括令人惊叹的Luna火山口。

- ✓ 活跃的断层形成了通道，使地热流体上升到地表，形成众多的温泉。
- ✓ 我们预计这些温泉含有高浓度的锂，并在数千年间丰富了Railroad Valley的湖泊沉积物。我们的实地工作将包括对地热表现的取样，并对其进行锂和其他元素的分析。



内华达州 EDWARDS CREEK

EDWARDS CREEK



Edwards Creek还表现出可能会增强锂矿化结构发生的地质属性。

- ✓ Edwards Creek Valley内满足所有已知的积累锂盐水的条件：
 - 水文封闭的盆地，有一个干旱盆地
 - 构造驱动的盆地发展
 - 相关的地热活动
 - 周边的长石流纹岩潜在的源岩
 - 一个或多个充足的含水层
 - 有足够的地质时间来浓缩盐水

- ✓ 这里有直接的公路通道、电力，而且该项目区位于Fallon镇和Austin镇附近。

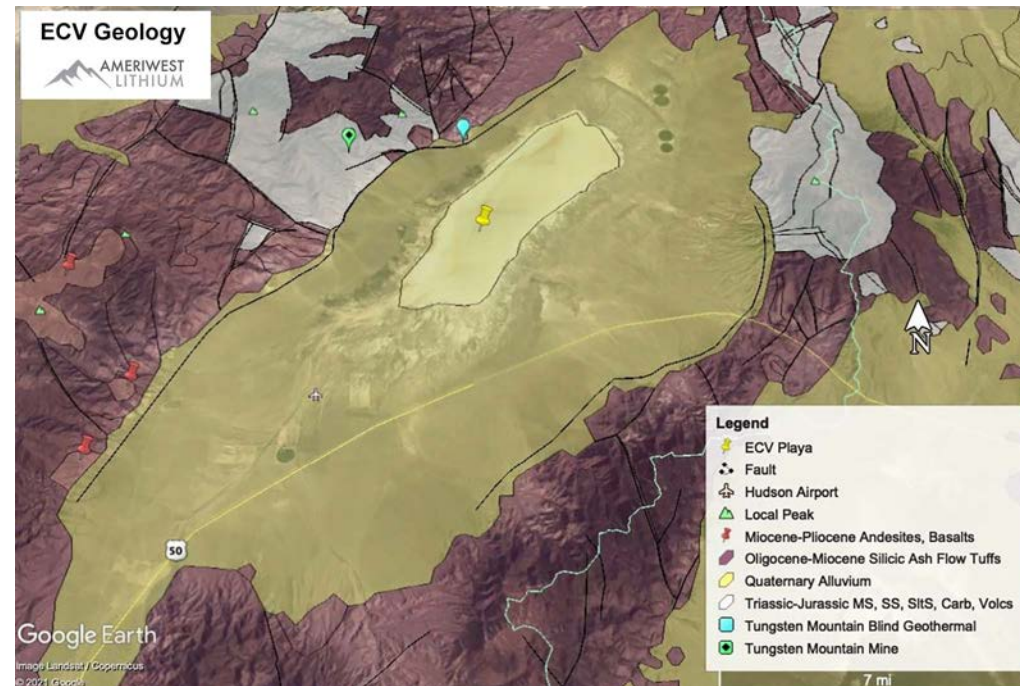
EDWARDS CREEK



✓ 邻近的Smith Creek Valley已经被勘探，在温泉周围的盐滩的表面取样中，锂的含量高达470ppm。Smith Creek Valley位于其与ECV共享的山脉前端（资料来源：内华达州矿产工业、内华达州矿业局，特别出版物MI-2017）。

✓ Smith Creek Valley项目正由Iconic Minerals Limited推进。此外，ECV周围有长石凝灰岩，可能是潜在的锂源岩，就像在Clayton Valley的外围发现的那样。

✓ 请注意，ECV与位于Clayton Valley或Smith Creek Valley的项目区相邻或相似，并不保证在ECV确定矿产资源量或储量。



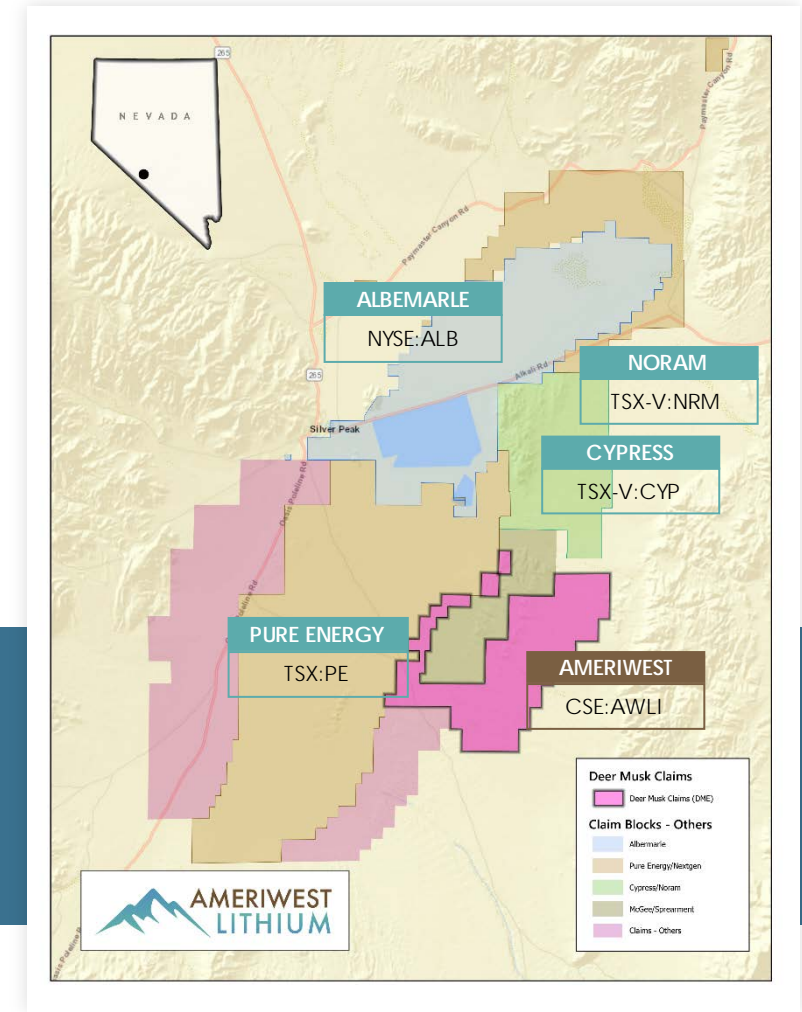
内华达州CLAYTON VALLEY



近年来，Clayton Valley已经成为锂矿勘探的热点，因为有几家公司已经展示了勘探成功：

- ✓ Albemarle's (NYSE: ALB)的Silver Peak是北美唯一的在产锂矿，位于Clayton Valley。Ameriwest的项目区位于Silver Peak以东5英里处。
- ✓ Cypress Development Corp. (TSX-V: CYP)最近完成了一项预可行性研究，并进行了重要的既定资源量评估。
- ✓ Noram Ventures Inc. (TSX-V: NRM)已经宣布了锂 >900 ppm的3亿吨资源。目前的钻探计划正在进行中，将使资源量增加一倍以上。
- ✓ Pure Energy minerals (TSX-V: PE)最近达成了一项锂盐水生产协议。

Ameriwest lithium认为它的Deer Musk East项目与它的邻居们位于同一个结构盆地内。



DEER MUSK EAST 锂项目



	市值*
Ameriwest Lithium	\$ 1896.2万
Albemarle	\$ 170.6亿
Pure Energy	\$ 5165.9万
Cypress Developments	\$1.24682亿

* 截止2021年4月

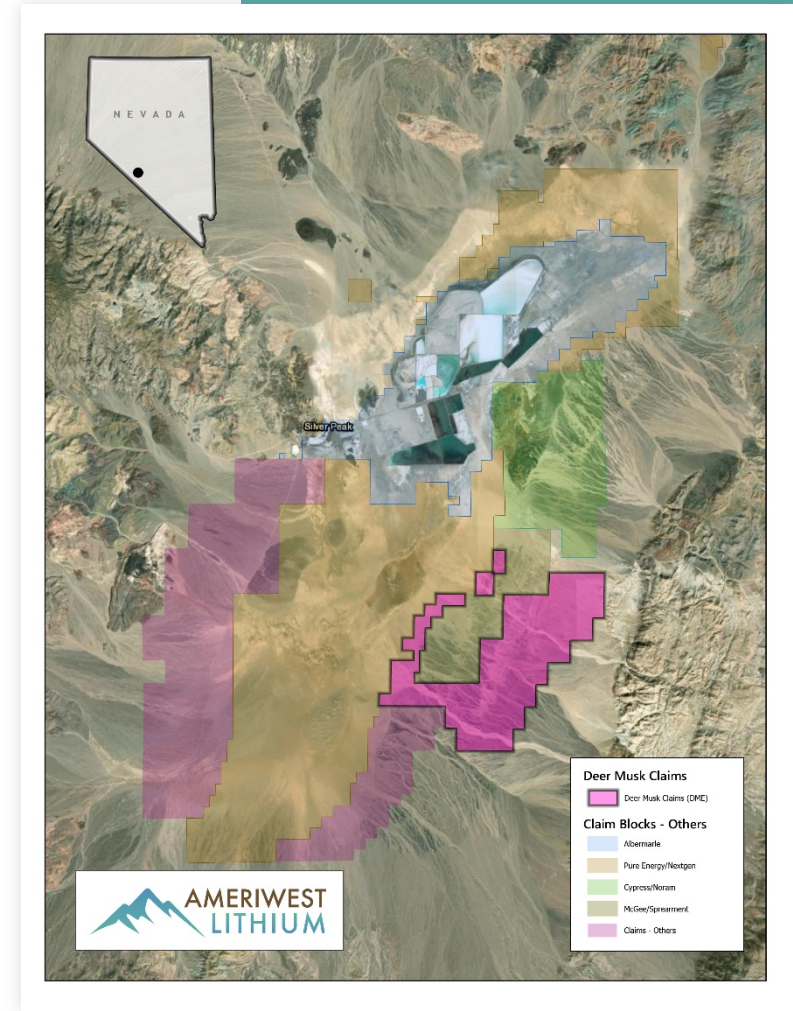
DEER MUSK EAST 锂项目



位于内华达州Clayton Valley的一个极具潜力的早期锂项目。

Clayton Valley是一个被山脉环绕的封闭干荒盆地，谷地面积约为40平方英里（100平方公里）。

- ✓ Deer Musk East由275个矿权区组成，总面积为5500英亩。
- ✓ 距离Albemarle的Silver Peak锂项目约5英里
- ✓ 直接与Pure Energy的锂资产相邻
- ✓ Deer Musk项目的北段，位于Cypress计划中的露天矿段附近，也在Noram Ventures目前的钻探地点附近。
- ✓ 矿权区东侧仍未得到充分勘探，可能存在富含锂的粘土石和泥岩
- ✓ Deer Musk矿区处于一个良好的战略位置，可能蕴含两种类型的锂矿化结构：锂盐水、富锂泥岩和粘土岩。



亚利桑那州光明的未来



被称为“White Hills”的地表粘土矿床最初是在20世纪50年代中期发现的，已知含有膨润土和锂蒙脱石粘土。20世纪60年代的勘探数据显示，膨润土的锂含量为0.3%至0.5%Li₂O（1,400至2,300 ppm锂），这与位于亚利桑那州更北部的其他锂粘土项目的锂含量相似。



THOMPSON VALLEY

Ameriwest Lithium最新收购的Thompson Valley是一个有前景的锂沉积矿床，地表或近地表有含锂的粘土，其历史品位与Clayton Valley的类似矿床相似。



Ameriwest已获得亚利桑那州土地局颁发的7个勘探许可证，以勘探位于亚利桑那州中西部Thompson Valley的近2859英亩（1157公顷）前景良好的含锂粘土。



该地点交通便利，离93号国道不远，在凤凰城以北120英里（190公里）处。



矿床很浅，出现在地表或接近地表的地方，据报道，整个粘土层厚度为70英尺（21米），包含一个厚度为8至35英尺（2.4至11米）的锂蒙脱石矿床，是整个地区相对均匀的矿床。*



Ameriwest将转向实地勘探计划，进行地质测绘和地表取样，以更好地确定矿床的范围和品位。

* 请注意，这些是在实施National Instrument 43-101之前采集的历史样本，其结果未经核实。这些结果确实表明了锂的存在，并证明有必要进行更多的勘探以评估这些矿床。



我们的团队



David Watkinson 首席执行官

Watkinson先生在地下和露天采矿项目方面拥有超过30年的专业工程经验，包括矿山许可、工程、可行性、建设和Emgold Mining Corporation的运营。除了EMGold之外，Watkinson先生在项目管理方面也有丰富的经验，曾将项目从草根的启动阶段成功推进到运营状态，曾负责管理加拿大、美国和菲律宾的大型资本项目和运营，曾担任过许多高级职位，任职公司包括但不限于Placer Dome Inc.、Kinross Gold Corporation、Thyssen Mining Construction和Vulcan Materials Company。

Watkinson先生拥有位于安大略省金斯敦的皇后大学采矿工程专业的应用科学学士学位（1985年），是安大略省的注册专业工程师。



Glenn Collick 董事兼首席运营官

Collick先生是一位企业家，为公司带来了广泛的经验和知识，1983年担任投资顾问，这使他对采矿业产生了广泛的兴趣，一直持续到现在。他参与了许多矿产企业，包括Voisey's Bay地区的发现，为许多上市公司标桩了几百平方公里的土地，并在阿根廷、墨西哥和加拿大的几个矿产勘探项目中发挥了重要作用。

Collick先生在可再生能源领域有丰富的经验，在Greenwind Power Corp.期间负责评估他们的风能潜力，对可再生能源的兴趣还延伸到了生物燃料领域，他成立了一家初创公司，该公司获得了阿尔伯塔省的一项重要拨款，用于设计和建造以油菜籽为原料的生物燃料反应器。

四年来，Collick先生担任在澳大利亚证券交易所上市的Atrium Coal NL的首席关系官，负责卑诗省北部的Groundhog煤炭发现。他的职责包括与政府、原住民和该项目的其他直接和间接利益相关者进行协商，并特别负责发展Atrium和原住民利益相关者之间的积极工作关系。

我们的团队



Graeme Wright
首席财务官

Wright先生有超过35年的财务管理、咨询和会计经验，涉及广泛的行业，曾在温哥华的多家技术公司担任财务副总裁和行政职位，其中一家公司Healthpricer Interactive Limited是一家上市公司。Wright先生的贡献对于Healthpricer的出售以及其运营子公司的分拆和私有化至关重要。

Wright先生毕业于多伦多大学，获得了商学学士学位，主修会计和经济学，并在普华永道会计师事务所接受了初步培训。



Sam Eskandari
董事

Eskandari先生在上市公司的营销和运营管理方面有丰富的经验，包括预算编制、筹集资金以及制定和执行成功的增长战略。他的专业经验横跨多个行业，包括制药、零售、采矿和技术。

在从事营销和管理之前，Eskandari先生是加拿大西部Future Shop/Best Buy旗舰店之一的总经理，他在那里成功地实施了一项营销和销售计划，使加拿大西部所有商店在一个关键时期的销售增长达到最高水平。Eskandari先生毕业于西蒙弗雷泽大学（SFU），拥有分子生物学和生物化学学位，还曾是矿业领域多家上市公司的董事会成员，作为一名连续创业者，在过去十年中是多家公司的创始人和/或联合创始人，目前是Oakley Ventures Inc.的董事和临时首席财务官。



James Gheyle
董事

Gheyle先生在25年前开始了在矿产勘探行业的职业生涯，并在多个处于勘探阶段的公司担任过多个职位，拥有丰富的行业经验，曾在必和必拓和戴比尔斯等公司从事各种项目，包括基本金属、黄金和钻石勘探。

在21世纪初，Gheyle先生在麦克默里堡获得了丰富的石油和天然气行业经验，当时任职于Red River Energy Consultants，并从一些大型石油公司承包项目。在石油和天然气行业任职期间，Gheyle先生担任了许多职务，包括钻探顾问和项目经理，同时作为管理团队的一员，监督麦克默里堡地区的大型钻探项目。2019年他开始为初级矿产勘探公司提供咨询。Gheyle先生拥有BCIT（卑诗省）的应用科学-地质学文凭（1997年）。

顾问



James Ingrassia

顾问

Ingrassia先生以前的地质经验包括在Lithium Americas Corp.、内华达州矿业和地质局以及美国地质调查局（USGS）担任多个职位，是Lithium Arrow LLC的创始人，这是一家专注于草根锂盐水发现的开发和推进的咨询公司。Ingrassia先生拥有内华达大学（里诺）的地质学硕士学位，特别专注于锂矿勘探方面。



Greg Bell

顾问

Bell先生是一位多学科的工程专家，在自然资源领域有超过30年的经验，曾为Fathom Nickel分析了阿尔伯塔省中部Bashaw项目区的锂油田盐水潜力，之后该项目成为E3 Metals Clearwater项目的一部分。他还在美国西部的许多地方勘探过锂和钴矿床，曾以项目工程师、项目经理、首席技术官、总裁或管理成员等不同身份成功地建立和管理了几个新启动的业务。Bell先生拥有科罗拉多大学和怀俄明大学的化学工程学士和硕士学位，是在亚利桑那州和犹他州注册的专业工程师，是国家地下水协会认可的注册地下水专家。

股权结构



已发行股票

38,790,000

截止2021年6月16日

认股权证：2021年5月私募融资：12,083,000

介绍人：2021年5月私募融资：261,450

认股权证：2021年2月私募融资：6,250,000

未行权期权 (Form 11, 2021年4月30日): 1,400,000

代理人认股权证 (2022年7月23日到期*) : 396,000

(*在2021年1月31日的中期财务报告中说明)



预留发行

29,390,450

谢谢

Ameriwest Lithium Corp.
306-1110 Hamilton Street,
Vancouver, BC V6B 2S2

电邮: info@ameriwestlithium.com
电话: +1.416.918.6785

CSE: AWLI | OTC: AMRWF | FSE: 5HV0

