



TSXV : BYN | OTCQB : BYAGF

**THE NEW YUKON GOLD RUSH**

**CORPORATE PRESENTATION**

February 1, 2023



# FORWARD LOOKING STATEMENTS



This presentation contains forward-looking information, which is not comprised of historical facts. Such information can generally be identified by the use of forwarding-looking wording such as “may”, “will”, “expect”, “estimate”, “anticipate”, “intend”, “believe” and “continue” or the negative thereof or similar variations. Forward-looking information involves risks, uncertainties and other factors that could cause actual events, results, performance, prospects and opportunities to differ materially from those expressed or implied by such forward-looking information. Forward looking information in this presentation includes, but is not limited to, the potential for the Powerline and Airstrip Deposits and Aurex Hill Zone to host on-surface and near-surface gold mineralization; the future expansion of the mineralized footprint at the Powerline and Airstrip Deposits; future drilling at the AurMac Property and the expected timing thereof; the timing and expected scope of the planned 2022 AurMac Property exploration program; Banyan’s objectives, goals or future plans; statements regarding exploration expectations, exploration or development plans; and mineral resource estimates. Factors that could cause actual results to differ materially from such forward-looking information include, but are not limited to, uncertainties inherent in resource estimates, capital and operating costs varying significantly from estimates, the preliminary nature of metallurgical test results, delays in obtaining or failures to obtain required governmental, environmental or other project approvals, political risks, uncertainties relating to the availability and costs of financing needed in the future, changes in equity markets, inflation, changes in exchange rates, fluctuations in commodity prices, environmental liability and insurance; reliance on key personnel; the potential for conflicts of interest among certain officers, directors or promoters with certain other projects; competition; dilution; the volatility of common share price and volume, delays in the development of projects and the other risks involved in the mineral exploration and development industry, enhanced risks inherent to conducting business in any jurisdiction, and those risks set out in Banyan’s public documents filed on SEDAR. Although Banyan believes that the assumptions and factors used in preparing the forward-looking information in this presentation are reasonable, undue reliance should not be placed on such information, which only applies as of the date of this presentation, and no assurance can be given that such events will occur in the disclosed time frames or at all. Banyan disclaims any intention or obligation to update or revise any forward-looking information, whether as a result of new information, future events or otherwise, other than as required by law.

**Cautionary Note to U.S. Investors Concerning Estimates of Measured, Indicated and Inferred Resources:** This presentation uses the terms “Measured”, “Indicated” and “Inferred” Resources. U.S. investors are advised that while such terms are recognized and required by Canadian regulations, the Securities and Exchange Commission does not recognize them. “Inferred Resources” have a great amount of uncertainty as to their existence, and great uncertainty as to their economic and legal feasibility. It cannot be assumed that all or any part of an inferred resource will ever be upgraded to a higher category. Under Canadian rules, estimates of Inferred Resources may not form the basis of feasibility or other economic studies. U.S. investors are cautioned not to assume that all or any part of an Inferred Mineral Resource exists, or is economically or legally mineable.

## **Qualified Person:**

Paul D. Gray, P.Geo. is a “qualified person” within the meaning of such term as set forth in National Instrument 43-101 of the Canadian Securities Administrators, has verified and supervised the preparation of all of the scientific and technical information contained in this presentation.

# STRATEGIC ADVANTAGE: TOP 5 REASONS TO INVEST

## 4 MILLION OZ RESOURCE

Expansion Potential to Tier 1 Status



## LEADERSHIP

Track Record of Value Creation



## INFRASTRUCTURE

Roads, Power, Communications



## TIER 1 Jurisdiction

Adjacent to 2 Mines, Permitting, Stable

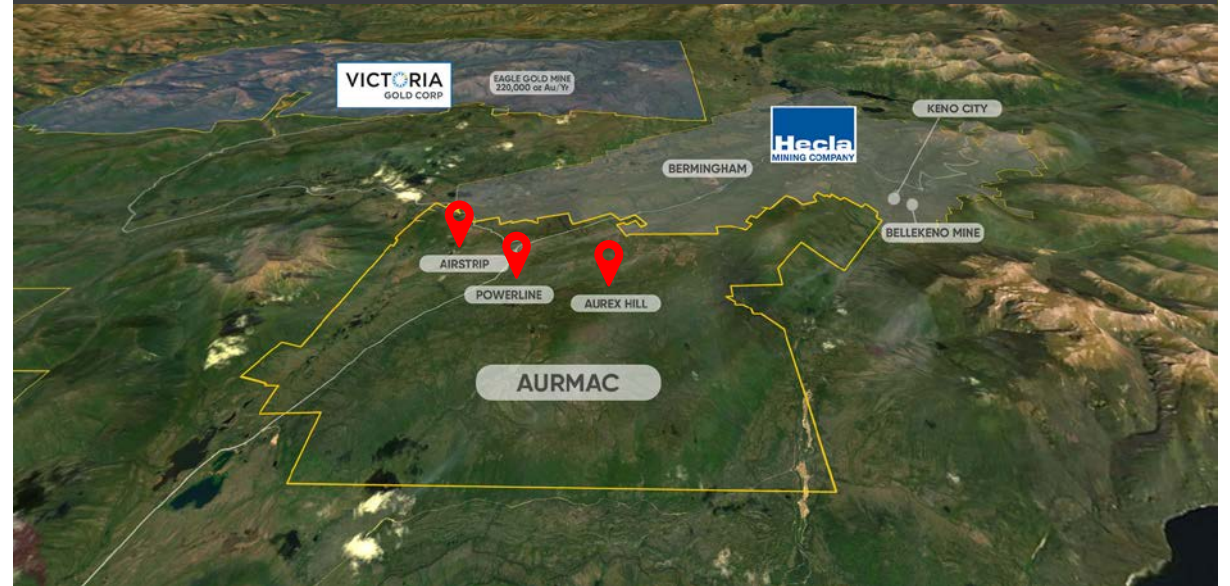


## YEAR-ROUND

Catalysts & Exploration



## MAY 2022 AURMAC INFERRED RESOURCE



## 4 Million Ounces @ 0.6 g/t Au Pit Constrained Resource

Aurex Hill – 215,000 oz at 0.53 g/t at 0.3 g/t Au cutoff

Airstrip – 874,000 oz at 0.64 g/t Au at 0.2 g/t Au cutoff

Powerline – 2,897,000 oz Au at 0.59 g/t Au at 0.2 g/t Au cutoff

*(Prepared in accordance with NI-43-101 standards)*

*Reference News Release: May 17, 2022. Marc Justras, P.Eng, M.A.Sc., Ginto Consulting Inc.*

*Technical Report filed June 29, 2022*

# CANADA'S NEWEST GROWING MINING DISTRICT

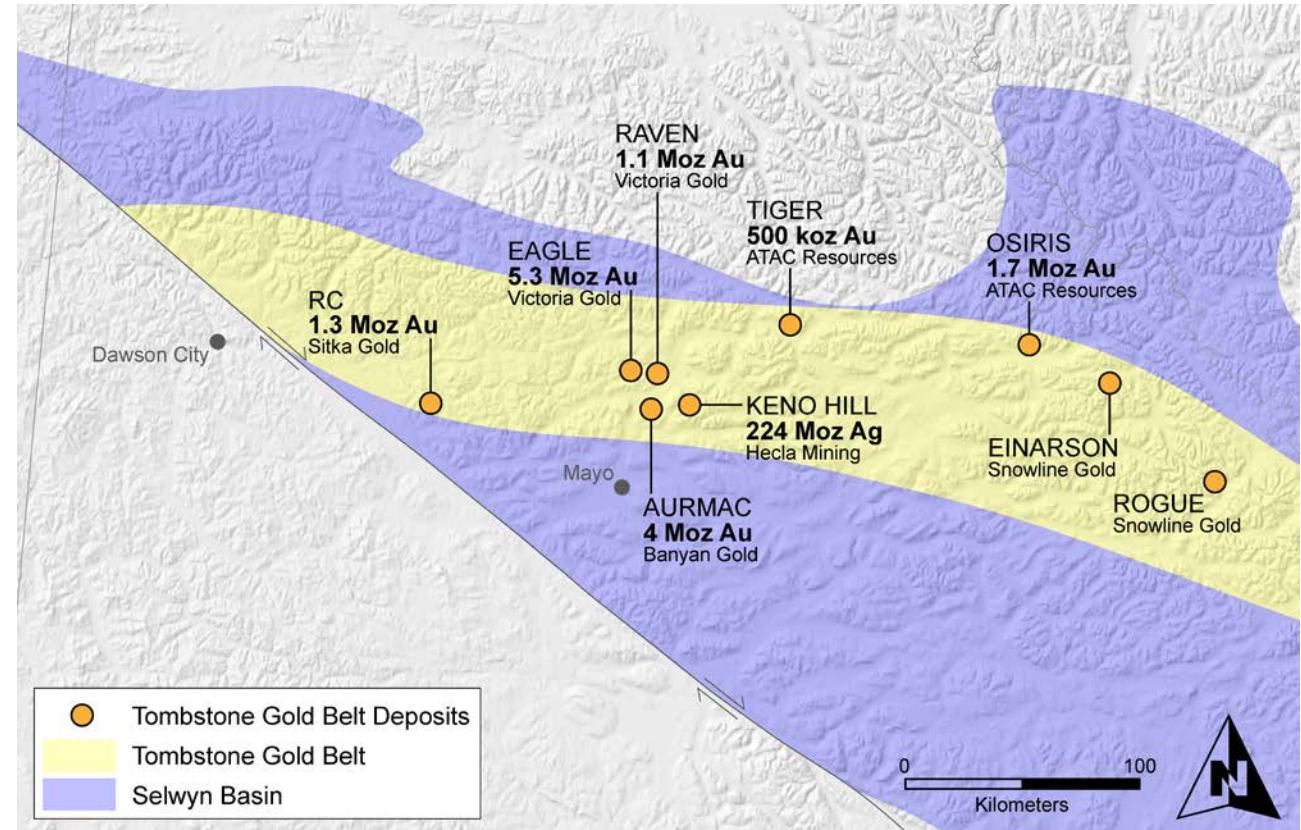
## NEW YUKON GOLD RUSH

- ✓ Underexplored Tombstone Gold Belt
  - Newmont Gold Corp. (Coffee - \$520 M), Agnico-Eagle, Barrick, Coeur, Kinross & Osisko
- ✓ +16 M Au Eq within 50 km radius of Aurmac
- ✓ New Mining District - New Discoveries



## SUPPORTIVE/STABLE JURISDICTION

- ✓ Existing Roads and Power Infrastructure
- ✓ Established Permitting Process / Security of Tenure



## ADJACENT TO PRODUCING MINES

Victoria Gold Corp. – Planning 250,000 oz/year by 2023

Hecla Mining Company – high grade silver mine



# LEADERSHIP – RECORD OF VALUE CREATION

## MANAGEMENT



**Tara Christie**  
M.A.Sc., P.Eng  
President & CEO,  
Director



**Paul D. Gray**  
P.Geo  
VP, Exploration



**David Rutt**  
CMA, CPA  
Chief Financial Officer



**Jasmine Sangria**  
MBA  
VP, Corporate  
Communications

## OPERATIONS



**James Thom**  
M.Sc.  
Sr Geologist & Field  
Manager

## DIRECTORS



**Marc Blythe**  
P.Eng.



**Steve Burleton**  
MBA, CFA



**David Reid**

## ADVISOR



**Jason Neal**

# INDUSTRY LEADING

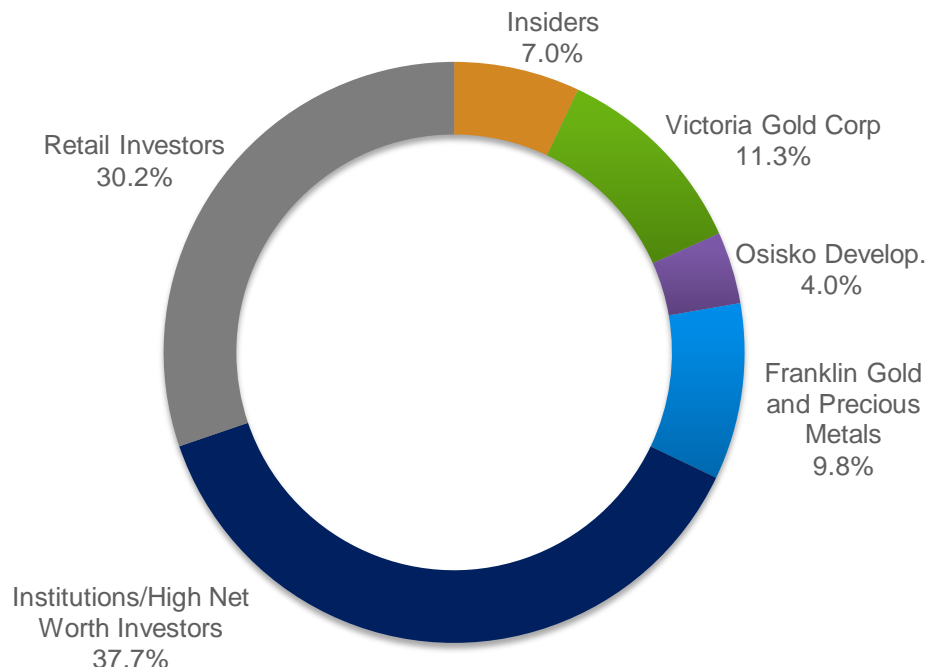


Market Capitalization	Current Price	\$0.475	52 Week High/Low	\$0.57/0.325
	Shares Outstanding (Basic)	284.5 M	Market Capitalization	~\$135 M
	Fully Diluted	307.9 M	Cash (Dec 2022)	\$19 M
	Options Outstanding	23.6 M	Warrants	0

Analysts / News Writers	<ul style="list-style-type: none"> <li>Cormark – Richard Gray – Price target \$1.25</li> <li>Gwen Preston – Resource Maven</li> </ul>
-------------------------	---

## Validation by some of the best in the business

20+ Industry professionals & mining CEOs as shareholders



## Recent Financings

- Dec 2022 – \$12.2 M (12.9 M FT at \$0.568, and 12 M at \$0.40)
- June 2022 – \$17 M (16.2 M Charity at \$0.63, 5.3 M FT at \$0.55, and 8.6 M at \$0.45)
- July/Aug 2021 – \$16 M (\$11.5 M Charity at 0.38, \$2.2 M FT at 0.35, and \$2.2 M at 0.28)



# AURMAC – 4 MILLION OUNCE GOLD RESOURCE



Pit Constrained Resource Estimate:  
**4 Million Ounces @ 0.6 g/t Au**  
May 17, 2022

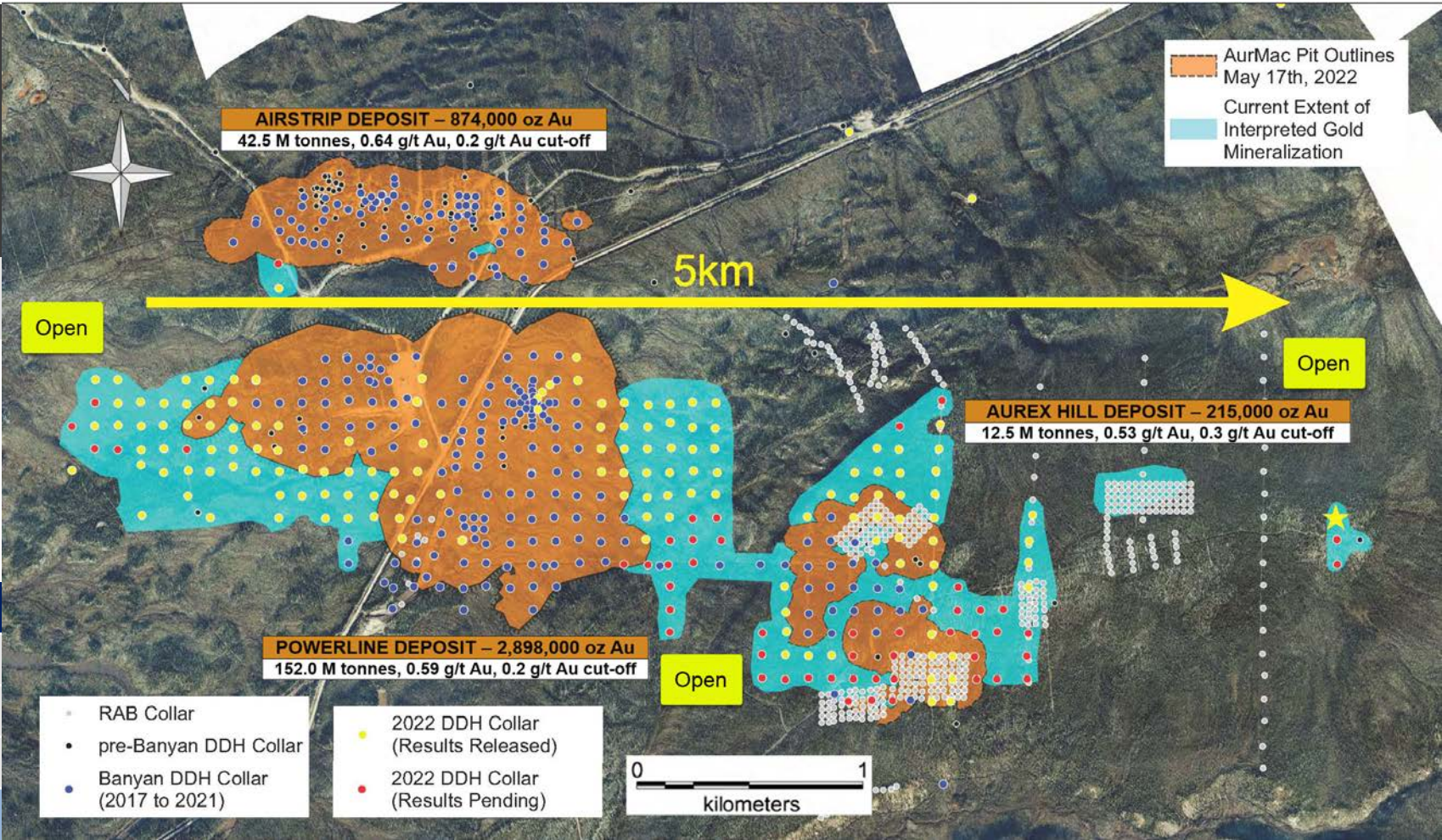
Note: 40,000 m of drilling added over 3 M ounces Au from 2020 resource

Reference May 17, 2022 Marc Jutras, P.Eng, M.A.Sc., Ginto Consulting Inc.

US\$/CAN\$ exchange rate of 0.75 and constrained within an open-pit shell optimized with the Lerchs-Grossman algorithm to constrain the Mineral Resources  
Parameters: gold price of US\$1,700/ounce, US\$2.50/t mining cost, US\$5.50/t processing cost, US\$2.00/t G+A, 80% heap leach recoveries, and 45° pit slope.

LG pit shell at Gold price \$1700 USD/oz., Mining Costs \$10. Technical Report to be filed within 45 days

Deposit	Strip Ratio
Airstrip	1.40 : 1
Powerline	0.34 : 1
Aurex Hill	1.50 : 1
Total Combined	0.63 : 1



# POWERLINE – POSITIONED FOR GROWTH

## Pit-Constrained Inferred Mineral Resources Powerline Deposit

Au Cut-Off (g/t)	Tonnage (tonnes)	Average Au Grade (g/t)	Au Content (oz)
0.1	190,905,921	0.503	3,087,297
0.15	172,955,984	0.542	3,013,879
0.2	151,984,708	0.593	2,897,648
0.25	133,368,315	0.644	2,761,401
0.3	114,974,053	0.704	2,602,337
0.35	99,180,749	0.764	2,436,193
0.4	85,881,004	0.825	2,277,939
0.45	73,227,267	0.894	2,104,754
0.5	62,852,644	0.963	1,945,991

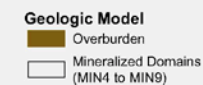
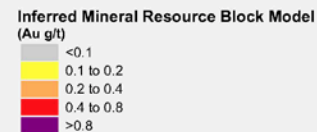
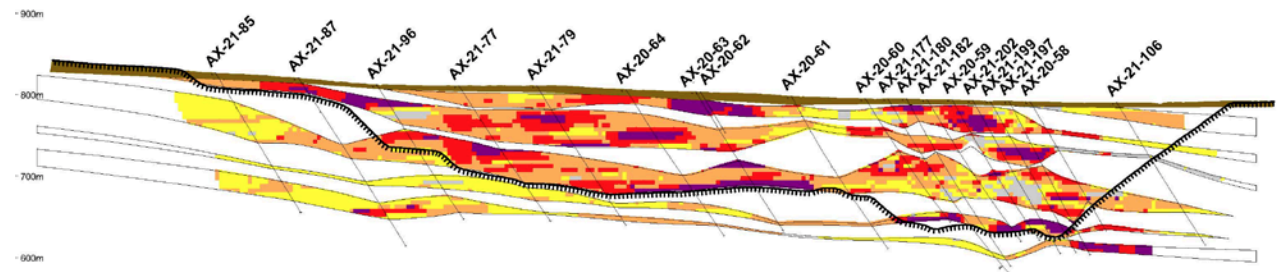
- ✓ On and Near Surface Mineralization
- ✓ Higher Grade & Expansion Potential

2022 Assay Highlights Include:

**31.8 m of 1.80 g/t Au**

**27.1 m of 1.50 g/t Au**

**84.4 m of 1.14 g/t Au**

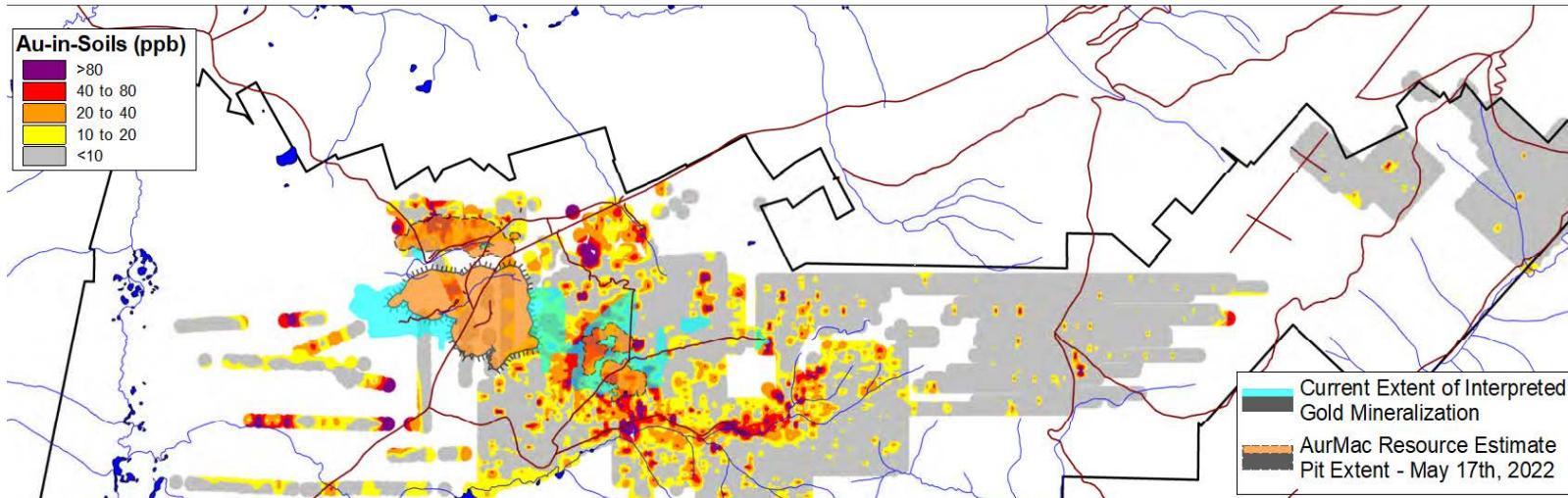
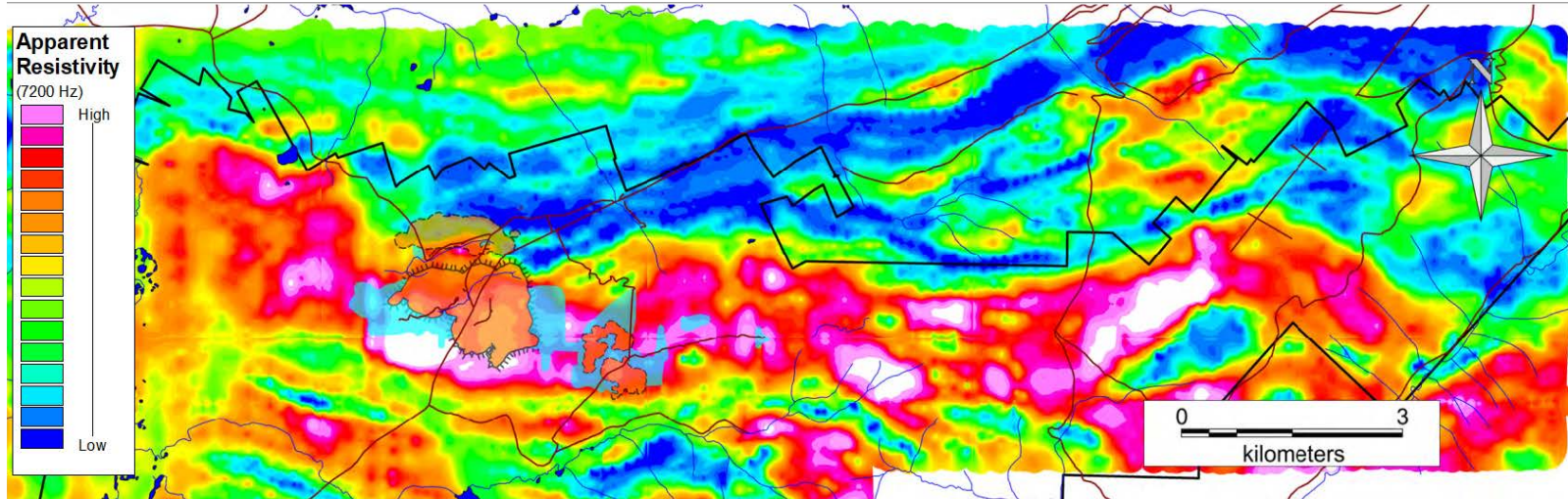


Powerline Mineral Resource  
Pit Boundary (May 17th, 2022)

NS Section Through Powerline



# DISTRICT SCALE RESOURCE POTENTIAL



## ALL RESOURCES OPEN

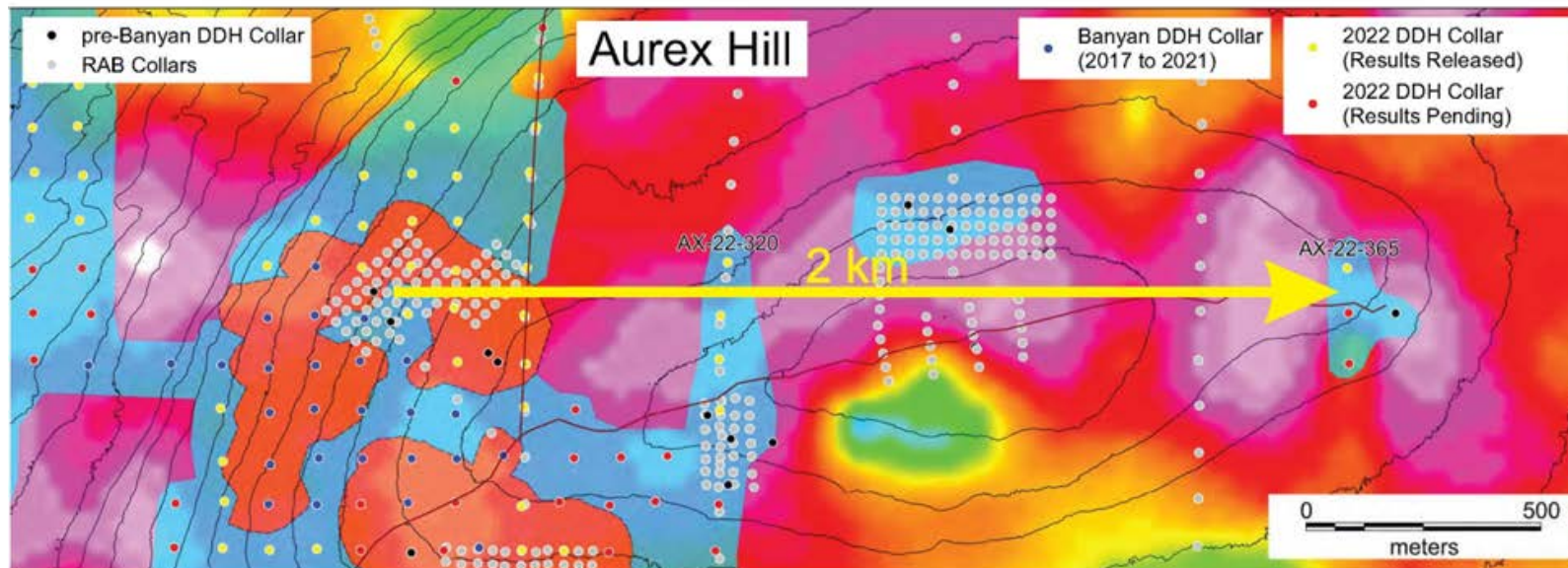
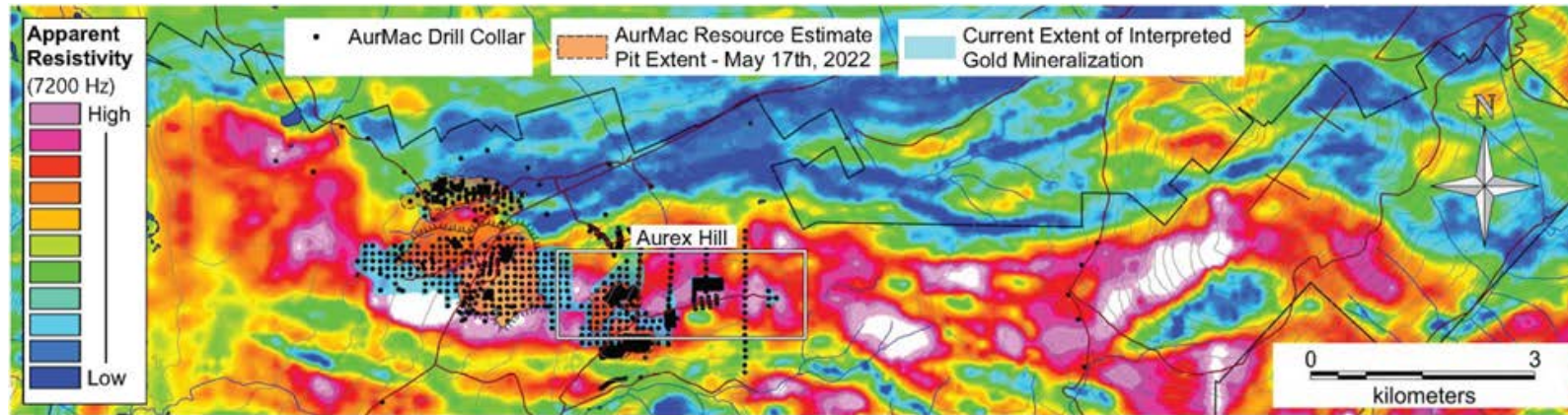
- >10 km sq gold soil anomaly to East with known RAB drill results

## POWERLINE AND AUREX HILL

- Powerline and Aurex Hill - resistive (siliceous) package of rocks - **16.5 km strike**
- Intrusion Related Gold Mineralization of Tombstone Gold belt
- Same age mineralization as Victoria Gold and Snowline



# ADVANCING TO TIER 1 & REGIONAL POTENTIAL

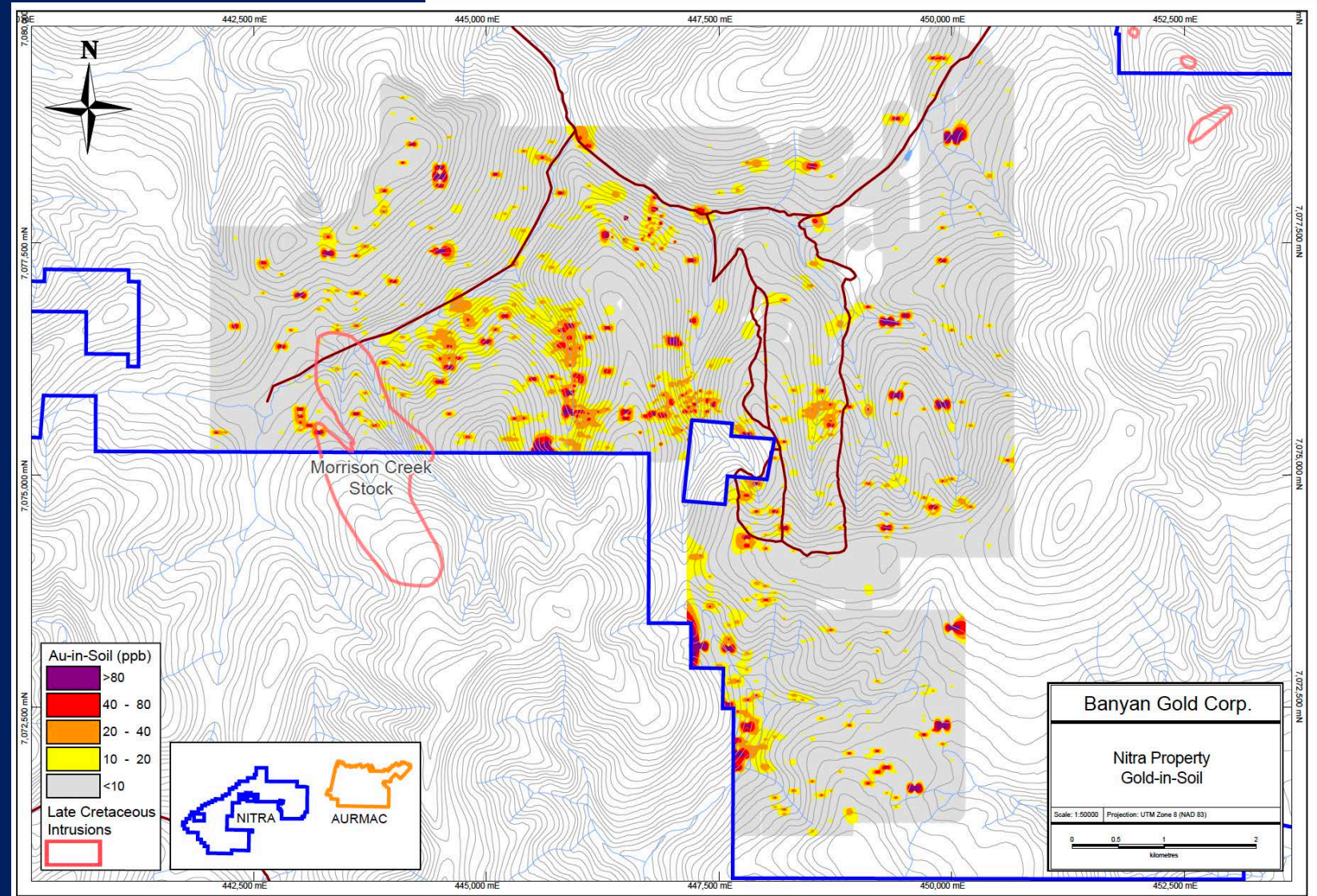


- 2023 Drilling Focus
  - Resource Expansion
  - High Grade Potential Starter Areas
  - Support PEA/Economics
- +50,000 m Drilled, +211 Holes, 60 holes pending assays
- Next Target: 6 - 7 Million Ounces in Inferred
- Expansion Target Potential: West Powerline to Galena Hill



# NITRA PROJECT - 100% OWNED

- ✓ AurMac Geological Model – Au-As Anomalies
- ✓ 3 Drill holes
- ✓ Soil sampling and trenching
- ✓ 1.5 km west of AurMac
- ✓ Road accessible

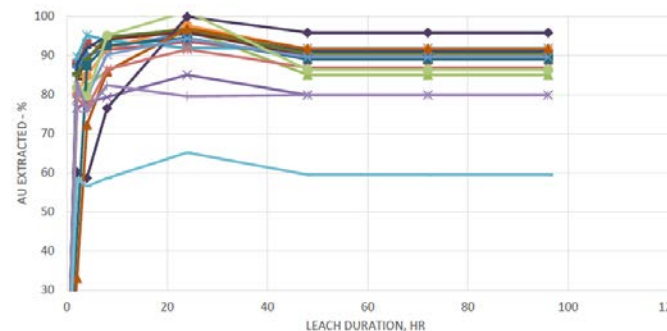
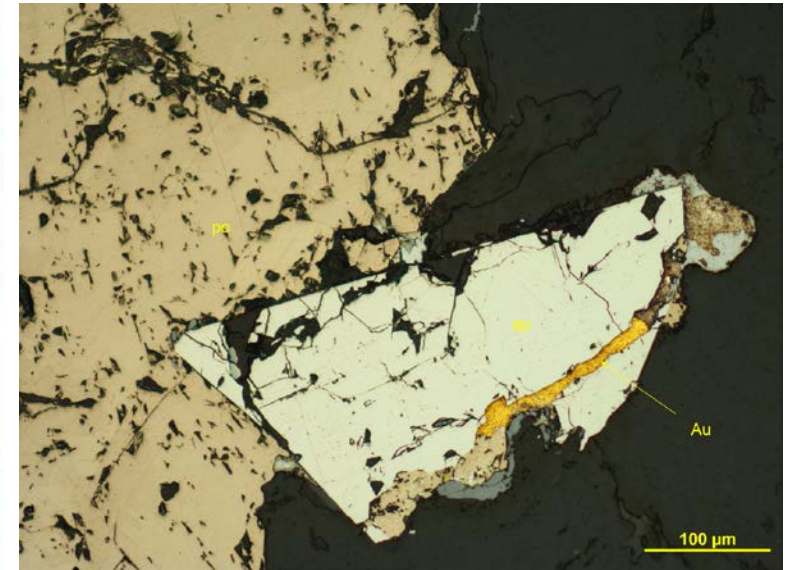
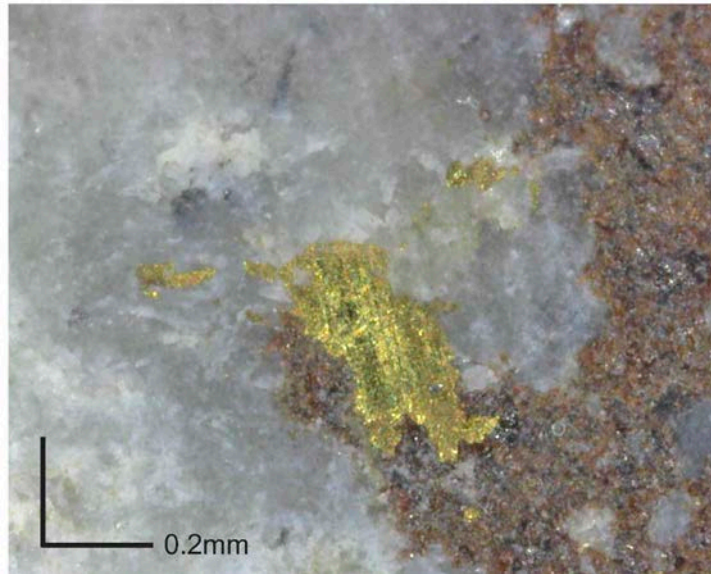




# METALLURGY – 90% GOLD EXTRACTIONS

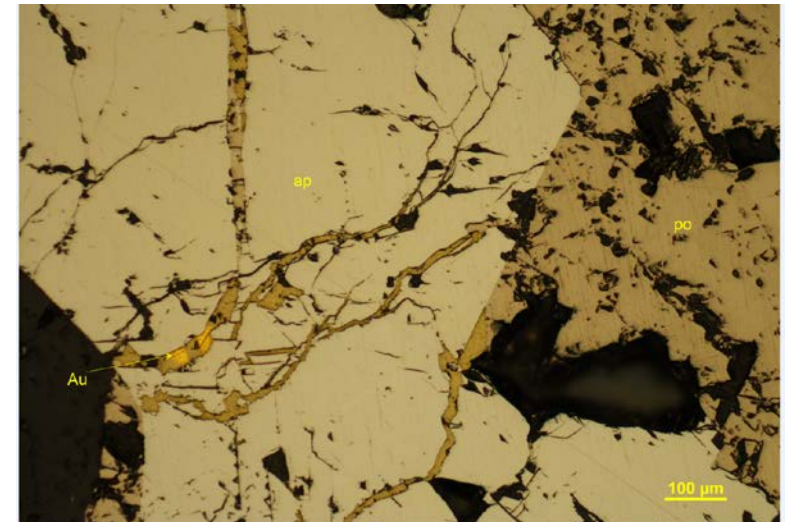
- ✓ 90% average recovery from Airstrip and Powerline (Oxide and Sulphide) Bottle Rolls on Pulps
- ✓ Robust Staged Metallurgical Program Planned & Underway
  - Gold Department Studies
  - Cyanide Amenable Leaching
    - (CIL & Bottle Roll)
  - Column Testing
  - Ore sorting/gravity/mechanics
- ✓ Expert Team Assembled
  - Forte Analytical
  - Independent Consultant

- **Visible Gold**
- **Not refractory**
- **Rapid leaching**
- **Gold in fractures**



10 Airstrip Zone samples gold extraction ranged from 80% to 96%, average 90%

5 Powerline Zone samples gold extraction ranged from 86% to 92%, average 89%





# NEXT GENERATION EXPLORER

## ENVIRONMENT

- Exceed industry best practices
- Minimize roads and trails – winter work
- Baseline Surveys – 3 yrs
- Permit to May 2028
- Powerlines – Hydro dam
- Recycle and Re-Use

## SOCIAL

- Community Involvement
- *Every Student, Every Day*
- Training
- Safety
- Strong relationships
- Local labour

## *Every Student, Every Day*

VICTORIA GOLD YUKON STUDENT ENCOURAGEMENT SOCIETY

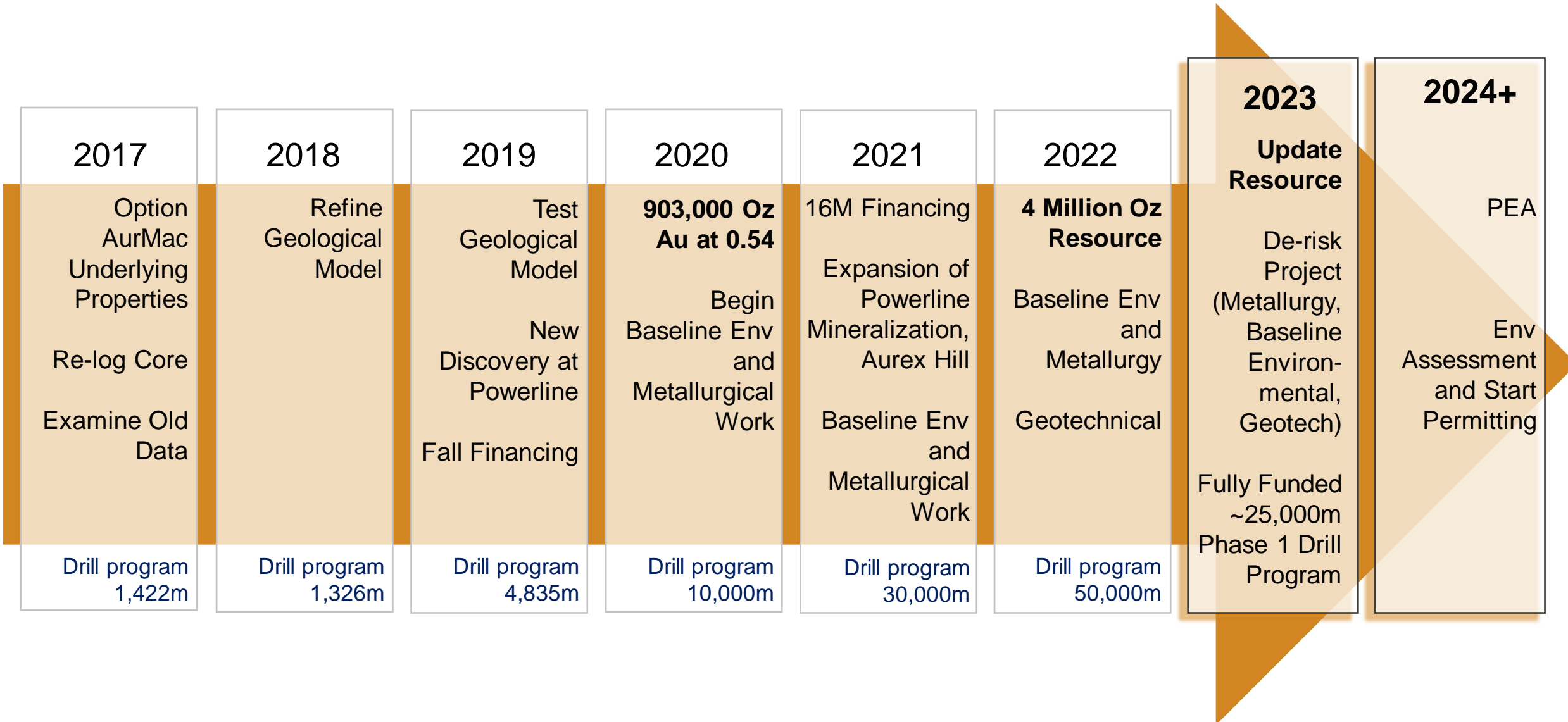
Over \$1,850,000 distributed – to fund projects to help address student attendance – all across the Yukon

## GOVERNANCE

- Code of Conduct
- Fiscal management
- Diversity



# THE ROAD AHEAD





# BANYAN INVESTMENT CATALYSTS

## ADVANTAGES



### **LACK OF PROJECTS +6M Oz**

- In a Tier 1 Location
- Existing Infrastructure



### **VICTORIA GOLD & HECLA MINING**



### **COMPELLING CURRENT VALUATION**

- < \$15/oz



### **YEAR-ROUND EXPLORATION**

- <\$5/ounce exploration cost
- Infrastructure - Roads/Power

## CATALYSTS



### **EXPLORATION RESULTS**

- Year-Round News

4M

### **4 M Oz INFERRED RESOURCE**

50K+

### **50,000m DRILLING COMPLETE IN 2022**

- Resource Expansion
- Higher Grade Starter Area(s)



### **FUNDED FOR 2023 EXPLORATION**

- 25,000 m Phase 1 drill program
- De-Risk Project: Metallurgy /Technical
- Resource update
- G&A into 2025



### **INCREASING OZ & QUALITY**







THANK YOU

**EMAIL:** [info@banyangold.com](mailto:info@banyangold.com)  
**WEBSITE:** [www.BanyanGold.com](http://www.BanyanGold.com)



Tara Christie  
President & CEO  
[tchristie@banyangold.com](mailto:tchristie@banyangold.com)  
T: (888) 629-0444

-  @BanyanGold
-  Banyan-Gold-Corp
-  BanyanGoldCorp
-  Banyan Gold