

TSXV : BYN | OTCQB : BYAGF

育空地區淘金潮

公司報告  
2023年2月1日



This presentation contains forward-looking information, which is not comprised of historical facts. Such information can generally be identified by the use of forwarding-looking wording such as “may”, “will”, “expect”, “estimate”, “anticipate”, “intend”, “believe” and “continue” or the negative thereof or similar variations. Forward-looking information involves risks, uncertainties and other factors that could cause actual events, results, performance, prospects and opportunities to differ materially from those expressed or implied by such forward-looking information. Forward looking information in this presentation includes, but is not limited to, the potential for the Powerline and Airstrip Deposits and Aurex Hill Zone to host on-surface and near-surface gold mineralization; the future expansion of the mineralized footprint at the Powerline and Airstrip Deposits; future drilling at the AurMac Property and the expected timing thereof; the timing and expected scope of the planned 2022 AurMac Property exploration program; Banyan’s objectives, goals or future plans; statements regarding exploration expectations, exploration or development plans; and mineral resource estimates. Factors that could cause actual results to differ materially from such forward-looking information include, but are not limited to, uncertainties inherent in resource estimates, capital and operating costs varying significantly from estimates, the preliminary nature of metallurgical test results, delays in obtaining or failures to obtain required governmental, environmental or other project approvals, political risks, uncertainties relating to the availability and costs of financing needed in the future, changes in equity markets, inflation, changes in exchange rates, fluctuations in commodity prices, environmental liability and insurance; reliance on key personnel; the potential for conflicts of interest among certain officers, directors or promoters with certain other projects; competition; dilution; the volatility of common share price and volume, delays in the development of projects and the other risks involved in the mineral exploration and development industry, enhanced risks inherent to conducting business in any jurisdiction, and those risks set out in Banyan’s public documents filed on SEDAR. Although Banyan believes that the assumptions and factors used in preparing the forward-looking information in this presentation are reasonable, undue reliance should not be placed on such information, which only applies as of the date of this presentation, and no assurance can be given that such events will occur in the disclosed time frames or at all. Banyan disclaims any intention or obligation to update or revise any forward-looking information, whether as a result of new information, future events or otherwise, other than as required by law.

**Cautionary Note to U.S. Investors Concerning Estimates of Measured, Indicated and Inferred Resources:** This presentation uses the terms “Measured”, “Indicated” and “Inferred” Resources. U.S. investors are advised that while such terms are recognized and required by Canadian regulations, the Securities and Exchange Commission does not recognize them. “Inferred Resources” have a great amount of uncertainty as to their existence, and great uncertainty as to their economic and legal feasibility. It cannot be assumed that all or any part of an inferred resource will ever be upgraded to a higher category. Under Canadian rules, estimates of Inferred Resources may not form the basis of feasibility or other economic studies. U.S. investors are cautioned not to assume that all or any part of an Inferred Mineral Resource exists, or is economically or legally mineable.

**Qualified Person:**

Paul D. Gray, P.Geo. is a “qualified person” within the meaning of such term as set forth in National Instrument 43-101 of the Canadian Securities Administrators, has verified and supervised the preparation of all of the scientific and technical information contained in this presentation.

# 戰略優勢：投資的五大理由

## 400萬盎司資源

向一級資產擴張的潛力



## 管理層

價值創造的成功履歷



## 基礎設施

道路、電力、通信



## 一級轄區

臨近兩座礦，許可流程成熟，政治穩定

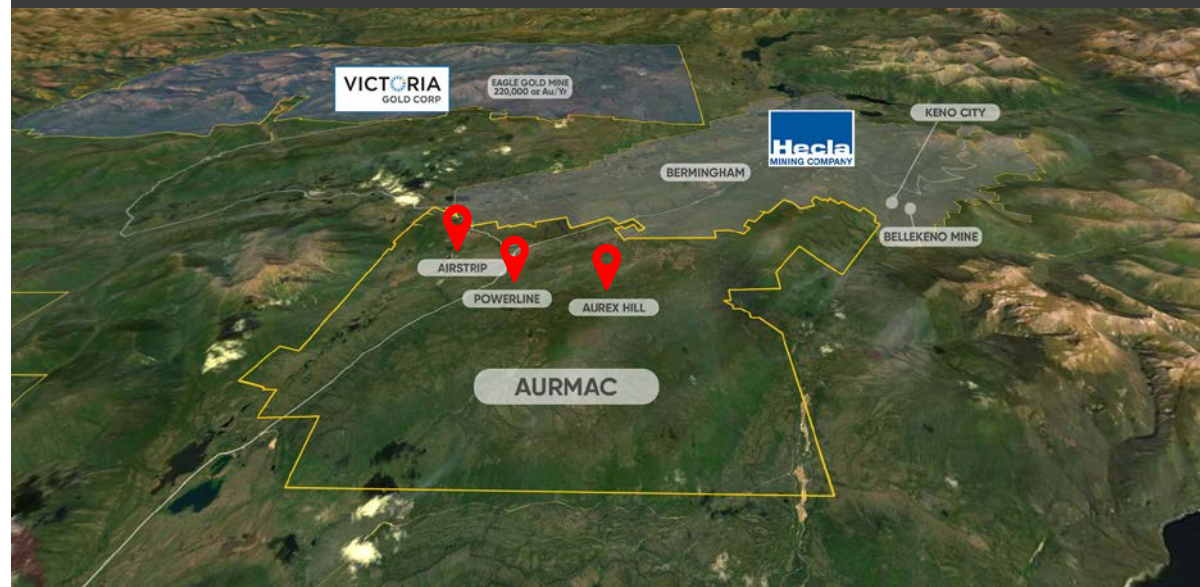


## 全年可勘探

催化劑與勘探



## 2022年5月AURMAC的推斷資源量



## 400萬盎司 @ 0.6克黃金/噸 礦坑內資源量

Aurex Hill – 215,000盎司，平均品位0.53克/噸，邊界品位0.3克/噸  
Airstrip – 874,000盎司，平均品位0.64克/噸，邊界品位0.2克/噸  
Powerline – 2,897,000盎司，平均品位0.59克/噸，邊界品位0.2克/噸

(按照NI-43-101標準製備)

參考新聞稿：2022年5月17日，Ginto Consulting Inc. 專業工程師、應用工程碩士 Marc Justras 編制的技術報告  
2022年6月29日歸檔。

# 加拿大最新且不斷發展的採礦區

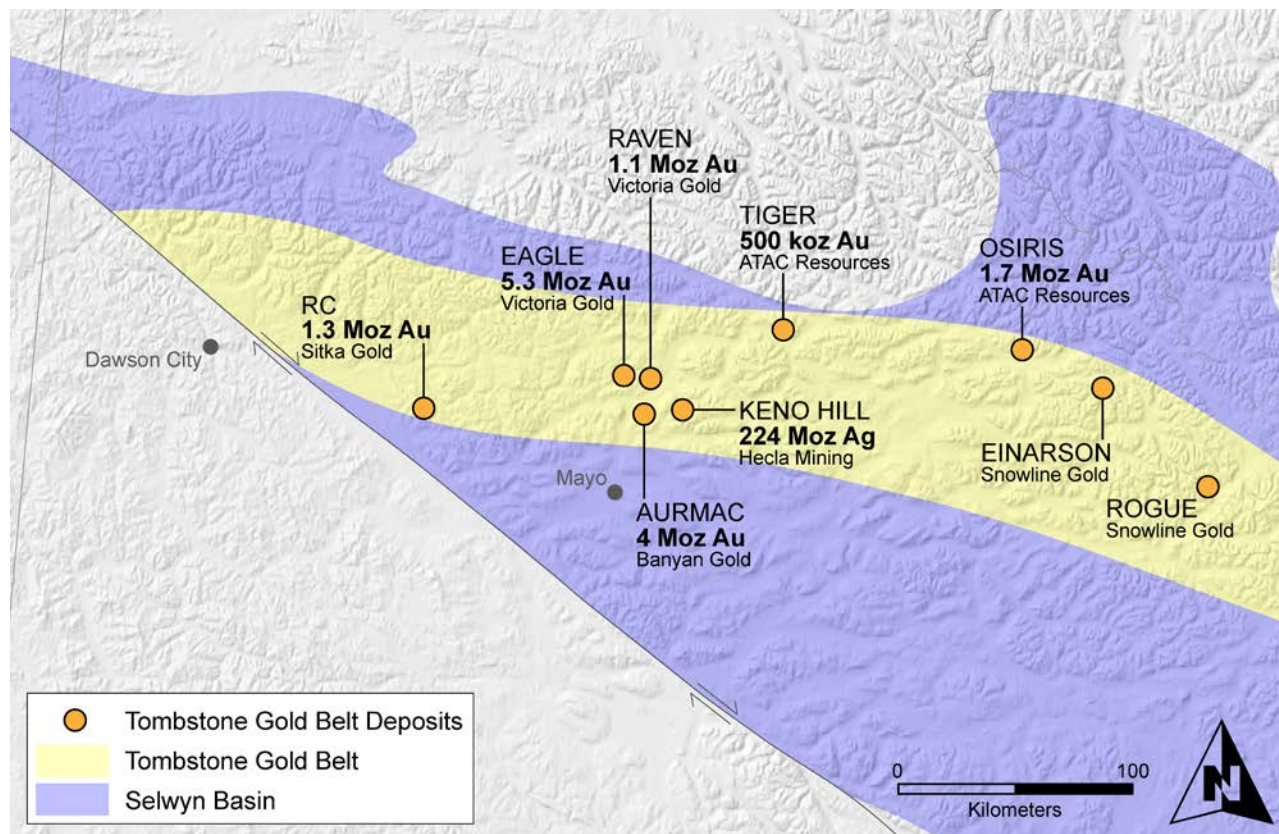
## 育空地區淘金熱

- ✓ 勘探不足的Tombstone黃金帶
  - Newmont Gold Corp. (Coffee - \$5.2億), Agnico-Eagle、Barrick、Coeur, Kinross & Osisko
- ✓ Aurmac周圍50千米範圍內有1600萬盎司以上黃金當量
- ✓ 新的採礦區 – 新的發現區



## 支持礦業/穩定的管轄區

- ✓ 現有的道路和電力基礎設施
- ✓ 成熟的許可流程/轄區安全



## 臨近在產礦山

Victoria Gold Corp. – 計劃到2023年每年生產25萬盎司

Hecla Mining Company – 高品位銀礦



# 領導團隊 – 創造價值的成功履歷

管理層



**Tara Christie**  
應用工程碩士、專業工程師  
總裁兼首席執行官、董事



**Paul D. Gray**  
專業地質學家  
勘探副總裁



**David Rutt**  
註冊管理會計師、特許  
專業會計師  
首席財務官



**Jasmine Sangria**  
工商管理碩士，  
企業公關副總裁

運營



**James Thom**  
理學碩士，高級地質學家  
和現場經理

董事



**Marc Blythe**  
專業工程師



**Steve Burleton**  
工商管理碩士、註冊金融  
分析師



**David Reid**

顧問



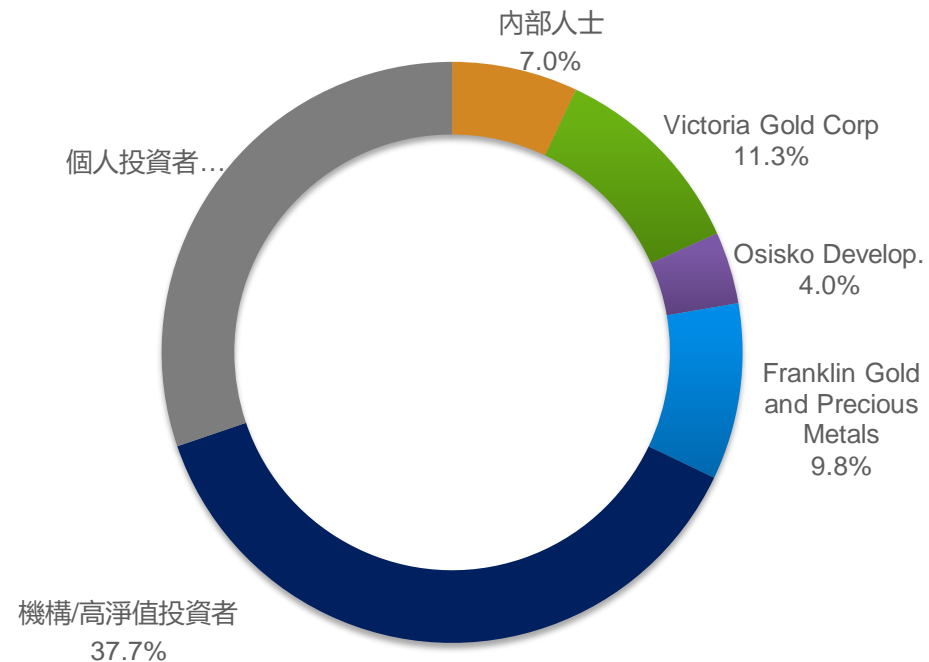
**Jason Neal**



市值	當前股價	\$0.475	52周高點/低點	\$0.57/0.325
	流通股 (基本)	284.5 M	市值	~\$1.35億
	完全稀釋後股數	307.9 M	現金 (2022年12月)	\$1900萬
	未行權期權	23.6 M	認股權證	0

分析師和新聞作家	<ul style="list-style-type: none"> <li>Cormark – Richard Gray – 目標價\$1.25</li> <li>Gwen Preston – Resource Maven</li> </ul>
----------	---

## 獲得行業內一些最專業人士的認可 股東中有20多位行業專家和礦業公司首席執行官



最近融資	<ul style="list-style-type: none"> <li>2022年12月-融資\$1220萬-(以0.568的價格發行流轉股1290萬股; 以0.40的價格發行1200萬股)</li> <li>2022年6月-融資\$1700萬-(以0.63的價格慈善發行1620萬股; 以0.55的價格發行流轉股530萬股, 以0.45的價格發行860萬股)</li> <li>2021年7/8月-融資\$1600萬-(以0.38的價格慈善融資\$1150萬; 以0.35的價格流轉股融資\$220萬, 以0.28的價格融資\$220萬)</li> </ul>
------	--



# AURMAC – 400萬盎司黃金資源

礦坑內資源量預估值：  
**400萬盎司 @ 0.6克黃金/噸**  
 2022年5月17日

注：4萬米鑽探將資源量在2020年的數據基礎上提高了300多萬盎司

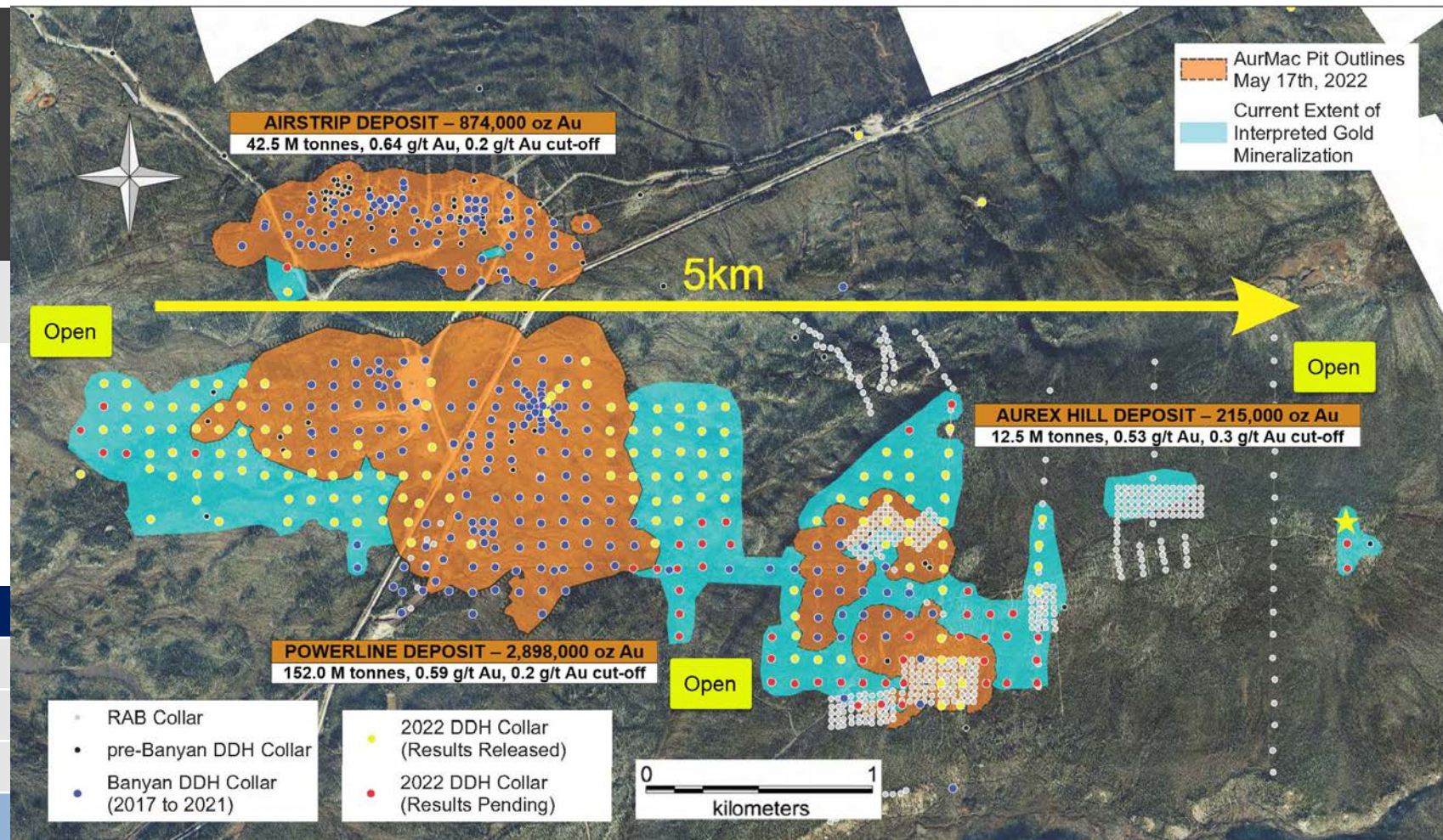
參考2022年5月17日由Ginto Consulting Inc. 專業工程師、應用工程碩士Marc Justras編寫的技術報告

美元/加元的匯率為0.75，露天礦坑外殼用Lerchs-Grossman算法優化，以限制礦產資源量。

參數：金價1700美元/盎司，開採成本2.50美元/噸，加工成本5.50美元/噸，一般及行政開支2.00美元/噸，堆浸回收率80%，礦坑坡度45°。

LG礦坑外殼，金價1700美元/盎司，採礦成本10美元。技術報告將在45天內提交

礦床	剝采比
Airstrip	1.40 : 1
Powerline	0.34 : 1
Aurex Hill	1.50 : 1
整體	0.63 : 1



# POWERLINE – 增長潛力

## 礦坑內推斷礦產資源量 Powerline礦床

黃金 邊界品位 (克/噸)	噸數 (噸)	平均黃金品位 (克/噸)	黃金含量 (盎司)
0.1	190,905,921	0.503	3,087,297
0.15	172,955,984	0.542	3,013,879
0.2	151,984,708	0.593	2,897,648
0.25	133,368,315	0.644	2,761,401
0.3	114,974,053	0.704	2,602,337
0.35	99,180,749	0.764	2,436,193
0.4	85,881,004	0.825	2,277,939
0.45	73,227,267	0.894	2,104,754
0.5	62,852,644	0.963	1,945,991

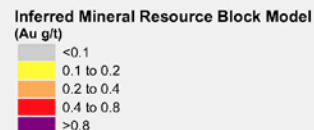
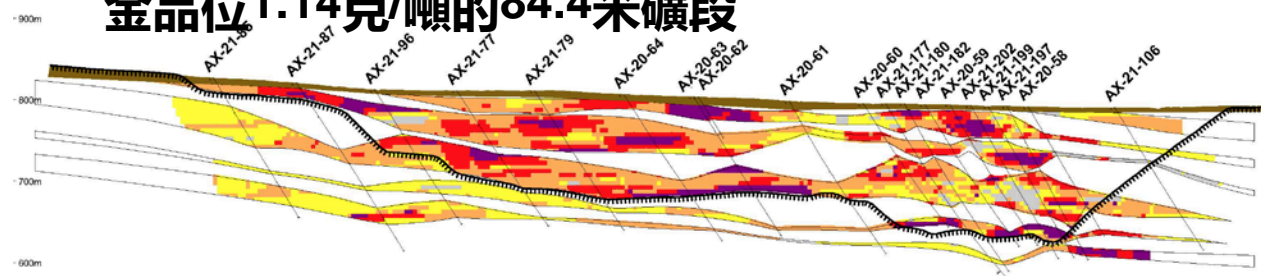
- ✓ 地表上和近地表礦化結構
- ✓ 較高品位與擴張潛力

2022年岩芯分析亮點包括：

**金品位1.80克/噸的31.8米礦段**

**金品位1.50克/噸的27.1米礦段**

**金品位1.14克/噸的84.4米礦段**



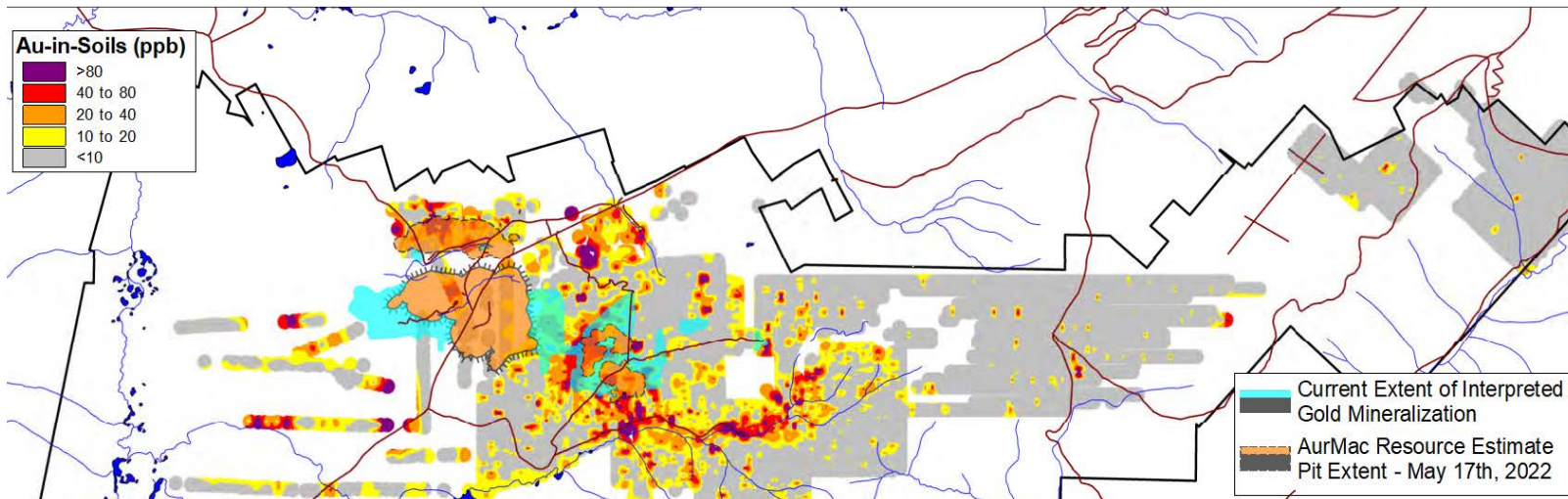
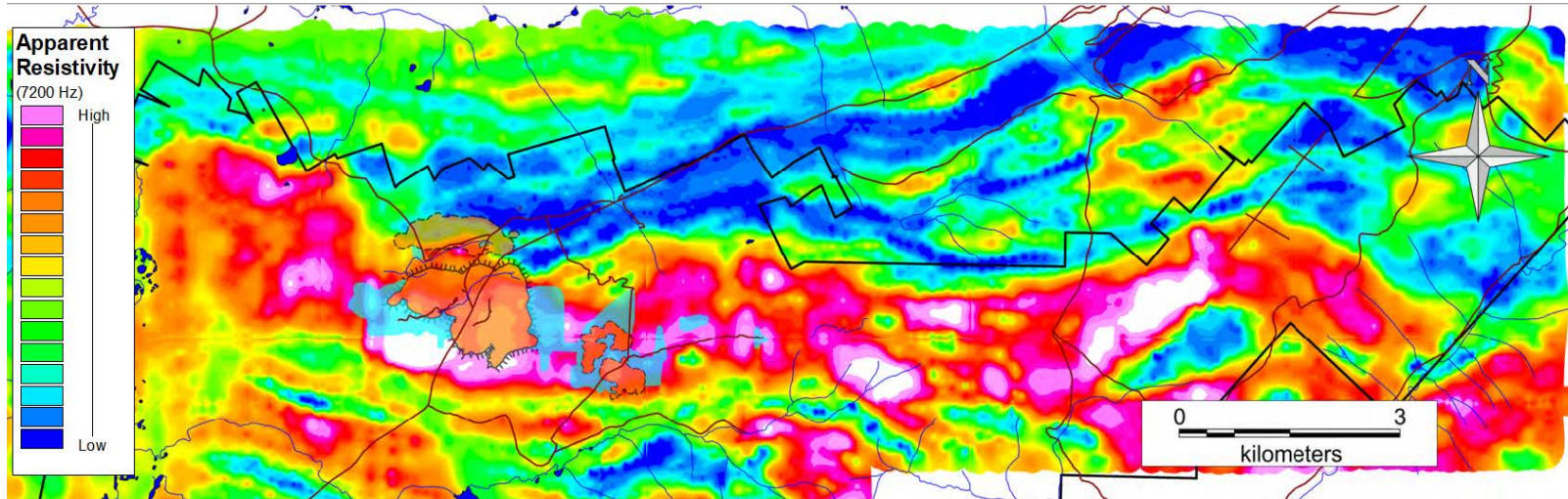
Powerline Mineral Resource Pit Boundary (May 17th, 2022)

貫穿Powerline的北南剖面圖





# 區域規模資源量潛力



所有資源未封閉

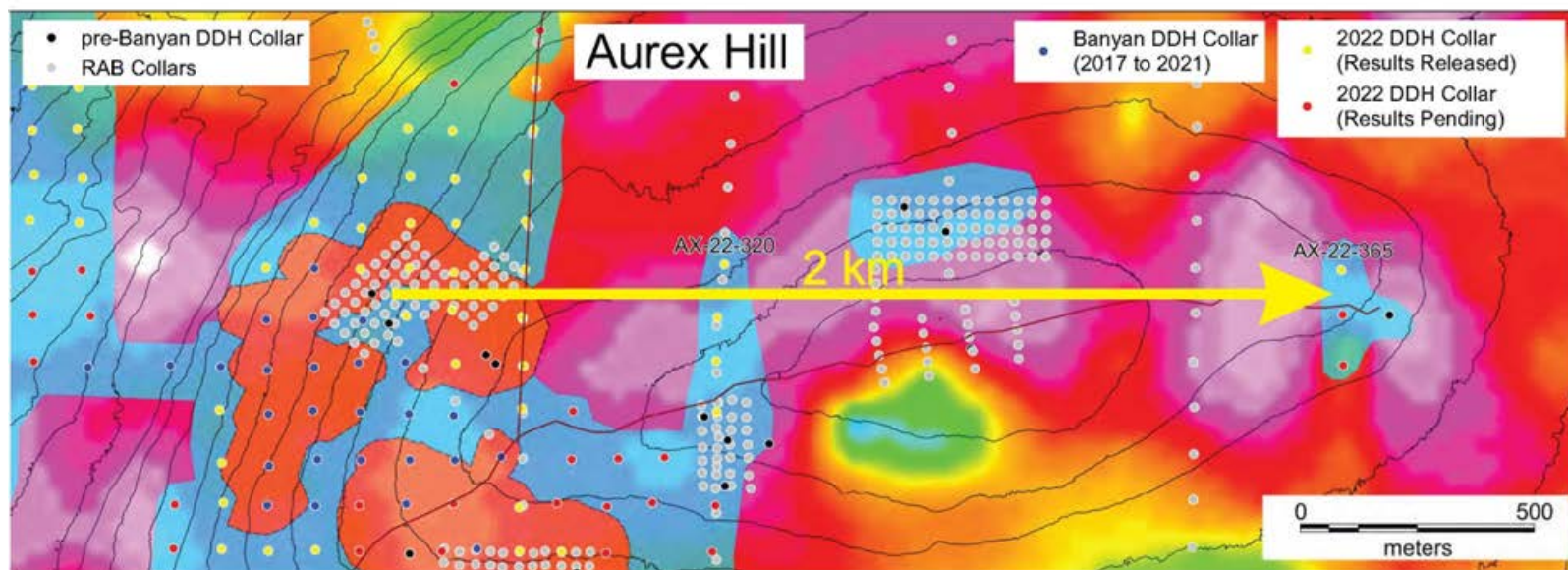
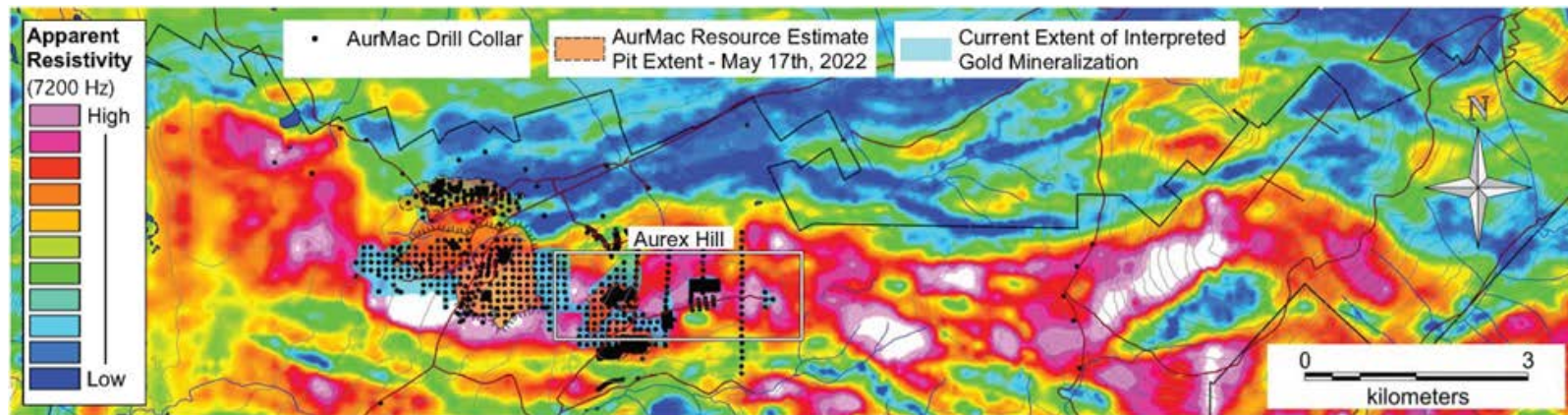
- 東部有10平方千米以上的黃金土壤異常區，已知RAB鑽探結果

POWERLINE和AUREX HILL

- 岩石的電阻（矽質） - 16.5千米走向長度
- Tombstone黃金帶的侵入相關黃金礦化結構
- 與Victoria Gold和Snowline同時代的礦化結構



# 向一級資產發展與區域潛力

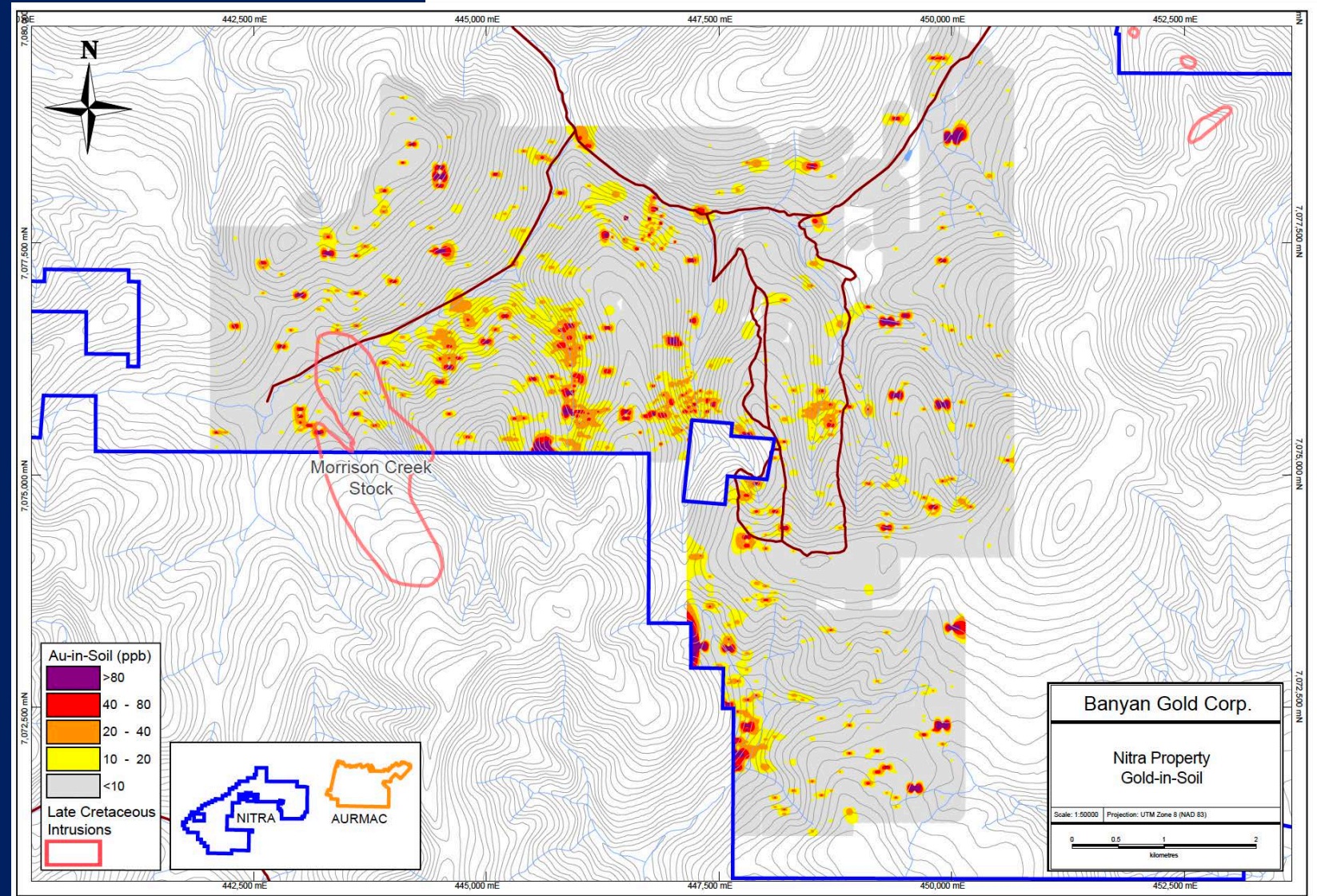


- 2023年鑽探重點
  - 資源量擴張
  - 高品位潛在啟動區域
  - 支持初步經濟評估/經濟價值
- 鑽探5萬米以上，211口鑽孔以上，60口鑽孔待分析
- 下一個目標：600-700萬盎司推斷資源量
- 擴張靶區潛力：West Powerline至Galena Hill



# NITRA項目- 100%擁有

- ✓ AurMac地質模型 – 金-砷異常區
- ✓ 3口鑽孔
- ✓ 土壤採樣與槽探
- ✓ AurMac以西1.5米潛力
- ✓ 有道路通達





# 冶金 – 提煉90%的黃金

✓ 從Airstrip和Powerline的平均採收率為90%（氧化物和硫化物），滾瓶測試

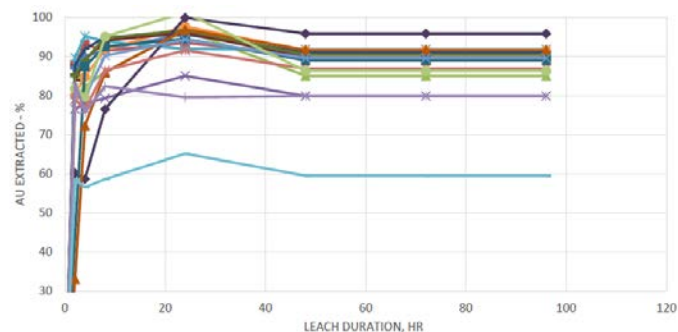
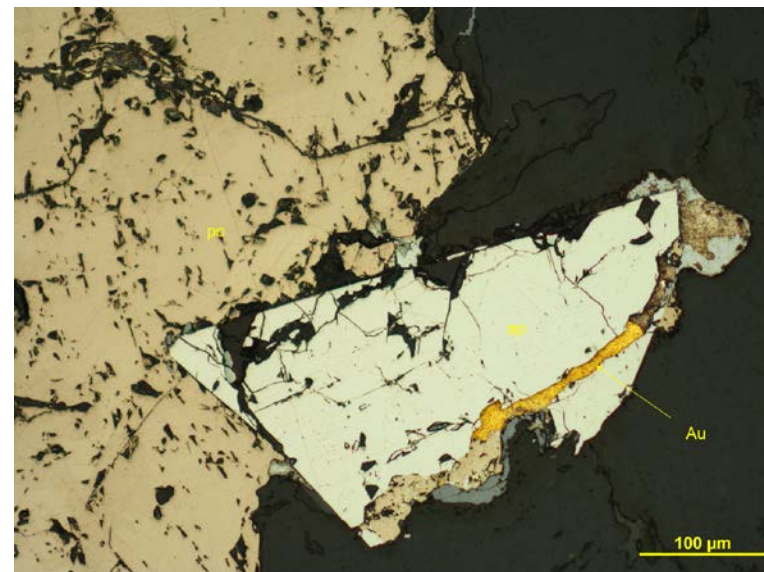
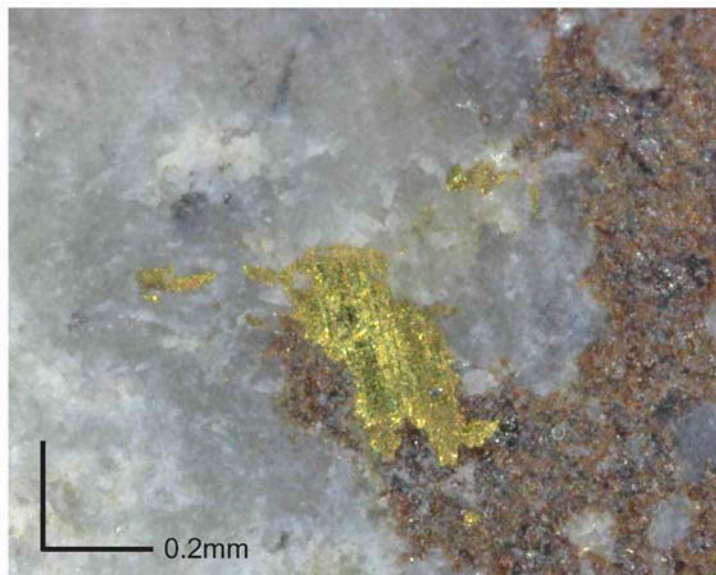
✓ 規劃和正在進行分期冶金項目

- 黃金開發研究
- 氰化物親和性浸出
  - (CIL & 瓶滾)
- 管柱測試
- 礦石分選/重力/機械

組建的專家團隊

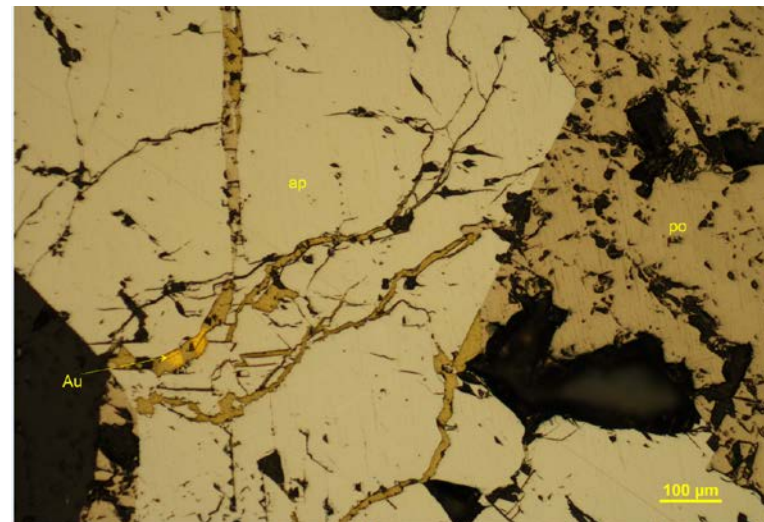
- ✓
- 特長分析
  - 獨立顧問

- 可見金
- 不耐火
- 快速浸出
- 裂縫中存在黃金



10個Airstrip區樣品的黃金回採率從80%至96%，均值为90%

5個Powerline區樣品的黃金回採率從86%至92%，均值为89%





# 下一代勘探家

## 環境

- 超過行業最高標準
- 最低限度的道路和小路—冬季工作
- 基線勘測 – 3年
- 許可證至2028年5月
- 電線連接到水電站
- 再循環和再利用

## 社會

- 為社區做貢獻
- 每個學生，每一天
- 培訓
- 安全
- 強大的關係
- 當地勞動力

## Every Student, Every Day

VICTORIA GOLD YUKON STUDENT ENCOURAGEMENT SOCIETY

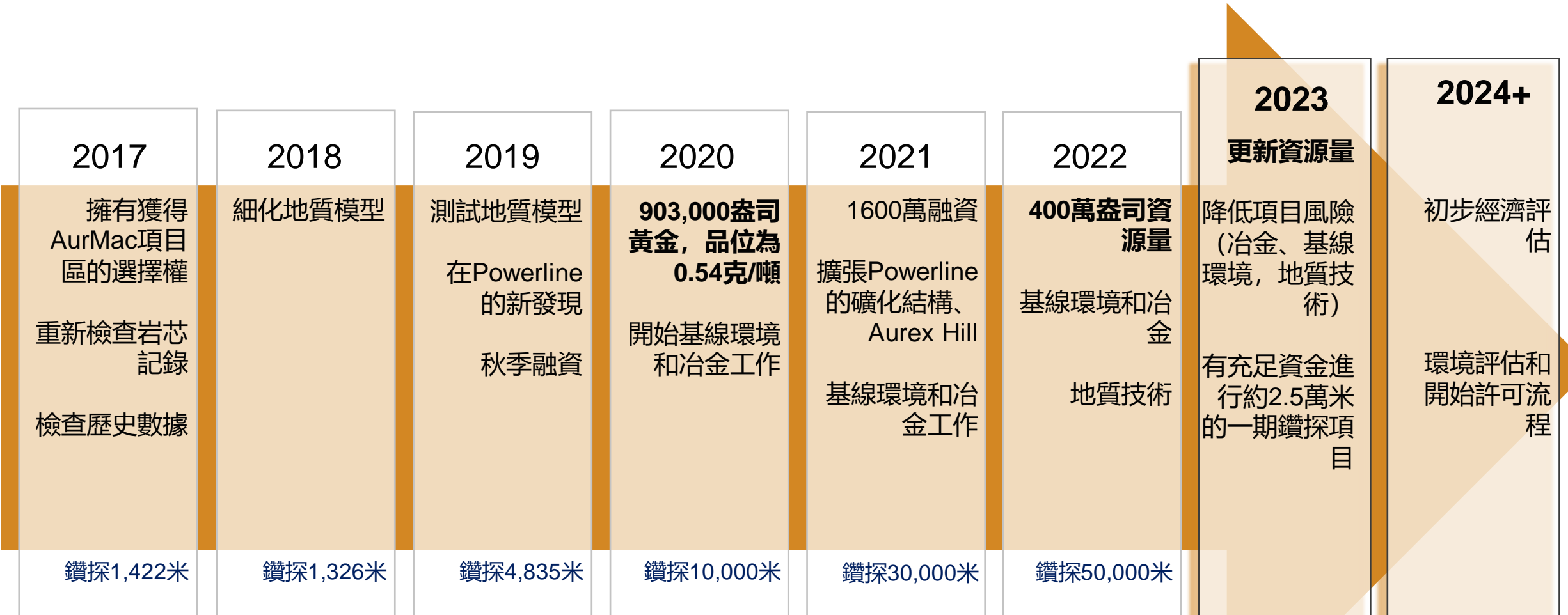
在育空地區捐贈了超過 \$150萬的資金，用於資助幫助解決學生出勤問題的項目。

## 治理

- 行為準則
- 財務管理
- 多樣化



# 未來規劃





## 優勢



### 600萬盎司資源以上的項目稀缺

- 處於一流的位置
- 現成的基礎設施



### VICTORIA GOLD & HECLA MINING



### 當前估值有吸引力

- < \$15/盎司



### 全年勘探

- 勘探成本低於\$5/盎司
- 基礎設施 – 道路/電力

## 催化劑



### 勘探結果

- 全年新聞

4M

### 400萬盎司推斷資源量

50K+

### 2022年完成了5萬米鑽探

- 資源量擴張
- 啟動區域品位較高



### 2023年勘探資金充足

- 25,000米一期鑽探項目
- 降低項目風險：冶金/技術
- 資源量更新
- 一般及行政開支可以用到2025年



### 提高資源的數量和質量



謝謝

電郵: [info@banyangold.com](mailto:info@banyangold.com)

網站: [www.BanyanGold.com](http://www.BanyanGold.com)



Tara Christie

總裁兼首席執行官

[tchristie@banyangold.com](mailto:tchristie@banyangold.com)

電話: (888) 629-0444



@BanyanGold



Banyan-Gold-Corp



BanyanGoldCorp



Banyan Gold