

A decorative background consisting of several flowing, wavy red ribbons that create a sense of movement and depth. The ribbons are semi-transparent and overlap each other, set against a light gray gradient background.

全自动精准体外诊断方案提供者

Provider for fully-automatic and precise IVD solution

深圳祺氏

Shenzhen Kisshealth Biotechnology Co., Ltd.



C 目录 CONTENTS

01

关于祺氏
企业简介

About KISSH

04

全球认证
资质及荣誉

Global Certifications

02

精准诊断
行业定位

Precised Diagnosis

05

精英组合
团队介绍

Powerful Team

03

产品及服务
产品组合

Products & Services

06

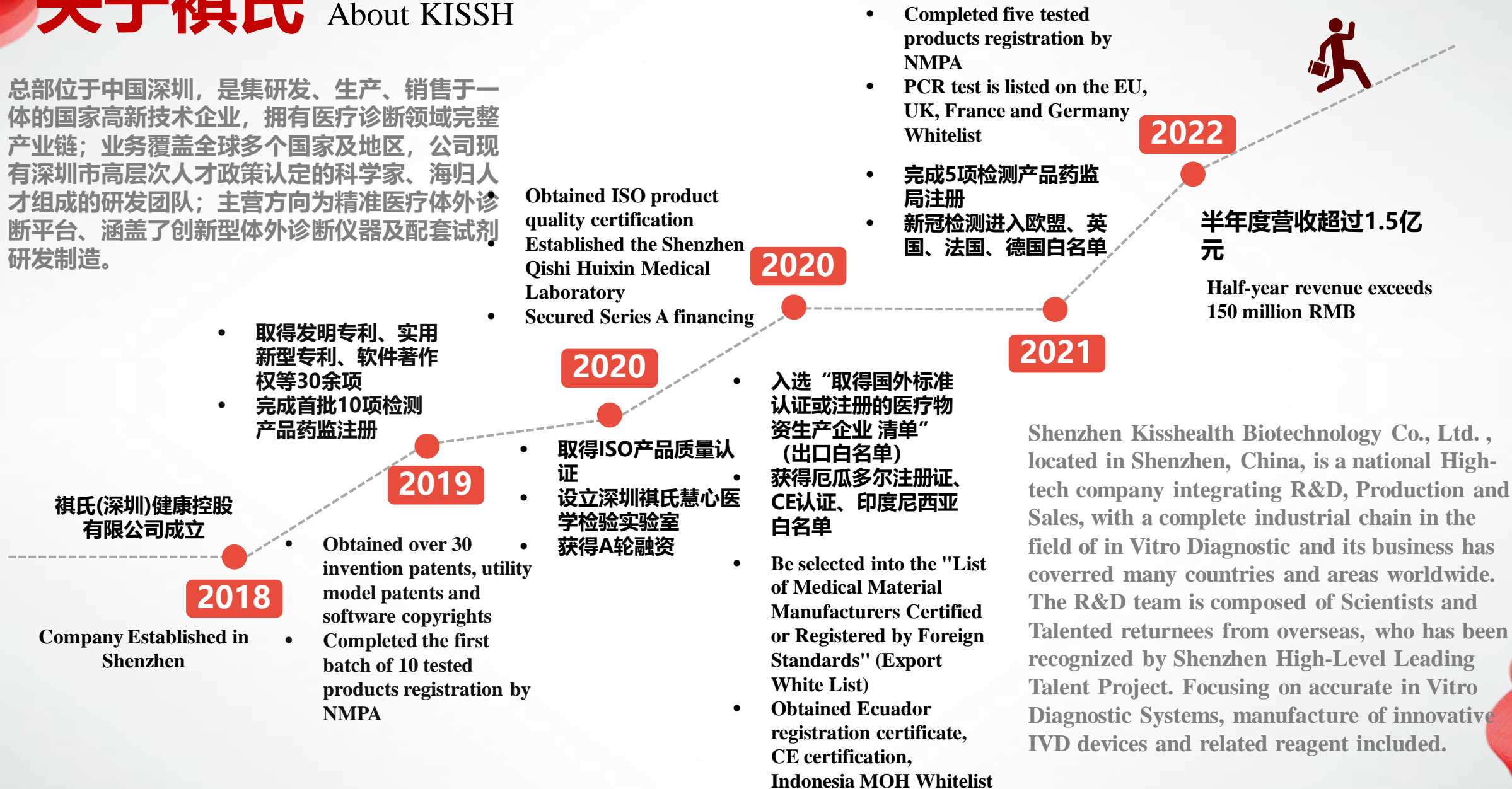
发展目标
发展规划

Development Strategy



关于祺氏 About KISSH

总部位于中国深圳，是集研发、生产、销售于一体的国家高新技术企业，拥有医疗诊断领域完整产业链；业务覆盖全球多个国家及地区，公司现有深圳市高层次人才政策认定的科学家、海归人才组成的研发团队；主营方向为精准医疗体外诊断平台、涵盖了创新型体外诊断仪器及配套试剂研发制造。



Shenzhen Kisshealth Biotechnology Co., Ltd., located in Shenzhen, China, is a national High-tech company integrating R&D, Production and Sales, with a complete industrial chain in the field of in Vitro Diagnostic and its business has covered many countries and areas worldwide. The R&D team is composed of Scientists and Talented returnees from overseas, who has been recognized by Shenzhen High-Level Leading Talent Project. Focusing on accurate in Vitro Diagnostic Systems, manufacture of innovative IVD devices and related reagent included.

以技术为起点深耕精准体外诊断

To deeply develop precised IVD based on technology

祺氏以“液盖膜”专利技术突破罗氏油膜覆盖技术壁垒，推出全自动免疫细胞及组织化学系统；随后又推出全自动免疫组化、全自动大分子蛋白质产品。

KISSH has broke through the technical barriers of the Roche oil cover technology with liquid cover technology, and has developed the full automatic IHC/ICC staining system, followed with Fully-automatic IHC processor and Fully-automatic products for Macromolecular proteins.

- 组织病理 Histopathology



我国市场规模20-30亿元 Market scale at CNY2-3 billions domestically

- 细胞病理 Cytopathology



我国市场规模超300亿元,国产替代 2%

Market scale domestically over CNY30 billions, where domestic products have replaced 2% of it

- 免疫组化 Immunohistochemistry



我国市场规模超40亿元,国产替代 4%

Market scale domestically over CNY4 billions, where domestic products have replaced 4% of it

- 分子病理 Molecular pathology



我国市场规模超50亿元,国产替代 1.8%

Market scale domestically over CNY5 billions, where domestic products have replaced 1.8% of it

以技术为起点深耕精准体外诊断

To deeply develop precised IVD based on technology

- 第三方医学实验室
Third-party medical laboratories



- 独立第三方病理诊断中心
Independent third-party pathology diagnostic center



市场规模超50亿元，以高于40%的增速发展
Market scale over CNY5 billions, growing at rate of more than 40%

- 面向医院病理科、检验科提供产品及服务
To provide products to Pathology Dept. and Laboratory Dept. at hospitals



- 面向专科类别提供产品及服务
To provide products and services to Specialist



- 面向疾控部门提供疾病筛查产品及服务
To provide disease testing products and services to Disease Control and Prevention Dept.



祺氏慧心医学实验室向市场提供快捷、精准、高效、人文的检测服务。

Qishi Huixin Medical Laboratory is providing Rapid, Precise, Efficient and Humanistic testing services to the market.

病理诊断是阐明疾病本质的医学科学，是绝大部分疾病，尤其是肿瘤疾病的诊断“金标准”。

Pathological diagnosis is a medical science that clarifies the nature of diseases, and is the "gold standard" for the diagnosis of most diseases, especially tumor diseases.

产品及服务 Products & Services

序号No.	项目大类 Item	项目叙述 Item Description
1	全自动病理诊断系统 Fully-Automatic Pathology Diagnostic System	<p>1、全自动单独滴染染色机KT5100 (全自动免疫细胞及组织化学平台系统及相关配套试剂) Fully Automatic IHC Stainer KT5100 (Fully automated immune cell and histochemistry platform system and related supporting reagents)</p> <p>2、全自动多功能病理检测系统KS9800及相关配套试剂 Fully Automatic Multifunctional Pathology Detection System KS9800 and Related Supporting Reagents</p> <p>1、配套试剂包括52种免疫组化一抗产品及免疫组化二抗产品 Supporting Reagents includes 52 IHC primary antibody and IHC secondary antibody products</p> <p>2、p16检测试剂盒(免疫细胞化学法)、p16/Ki-67检测试剂盒(免疫细胞化学法)、巴氏染色试剂盒(TCT液基细胞检查)、Ki-67抗体检测试剂盒、(HPV)E7蛋白检测试剂盒(免疫细胞化学法) p16 Test Kit (Immunocytochemistry), p16/Ki-67 Test Kit (Immunocytochemistry), Pap Staining Kit (TCT Liquid-Based Cytometry Detection), Ki-67 Antibody Test Kit, (HPV) E7 Protein Test Kit (Immunocytochemistry)</p> <p>全自动液基细胞样本处理机 Fully Automatic Liquid-Based Cell Sample Processor</p> <p>全自动细胞块制备机 Fully Automatic Cell Block Preparation Machine</p>
2	全自动POCT免疫学体外诊断系统 Fully Automatic POCT Immunology IVD System	<p>全自动特定蛋白免疫分析仪 Fully Automatic Specific Protein Immunoassay Analyzer</p> <p>1、红细胞渗透性(EOF)检测试剂盒(一管法) Erythrocyte permeability(EOF) Test Kit(One-Tube Method)</p> <p>2、血清淀粉样蛋白A (SAA)测定试剂盒(胶乳增强免疫比浊法) Serum Amyloid A (SAA) Test Kit (Latex-Enhanced Immunity Turbidimetry)</p> <p>3、C反应蛋白(CRP)测定试剂盒(胶乳增强免疫比浊法) C-Reactive Protein (CRP) Test Kit(Latex-Enhanced Immunity Turbidimetry)</p> <p>4、降钙素原(PCT)测定试剂盒(胶乳增强免疫比浊法) Procalcitonin (PCT) Test Kit(Latex-Enhanced Immunity Turbidimetry)</p>
3	全自动核酸提取仪及配套试剂 Automatic Nucleic Acid Extractor and Related Reagents	<p>1、全自动核酸提取仪 Automatic Nucleic Acid Extractor</p> <p>2、核酸提取试剂盒病毒DNA/RNA提取(磁珠法) Nucleic Acid Extraction Kit Viral DNA/RNA Extraction (Magnetic Bead Method)</p>
4	新型冠状病毒系列产品 COVID-19 Series Products	<p>新冠抗原检测试剂盒(胶体金法)、新冠中和抗体检测试剂盒等多种试剂盒 SARS-CoV-2 Antigen Test Kit (Colloidal Gold), SARS-CoV-2 Neutralizing Antibody Test Kit etc.</p> <p>猴痘病毒核酸检测试剂盒(PCR荧光探针法), 一次性病毒采样管 Monkeypox Virus Nucleic Acid Test Kit (PCR Fluorescent Probe Method), Disposable Virus Sampling Tube</p>
5	宫颈癌筛查取样盒 Cervical Cancer Screening Sampling Box	<p>p16免疫细胞化学检测项目 p16 ICC Test Items</p>
6	深圳祺氏慧心医学检验实验室 Shenzhen Qishi Huixin Medical Laboratory	

全自动病理诊断系统

Fully-automatic Pathology Diagnostic System

1. 全自动单独滴染染色机KT5100

Fully-automatic Independent Drip Staining System KT5100

- **全自动染色**
Fully-automatic Staining
- **制片染色一体**
Combination of slide preparation and Staining
- **同时测试30个项目**
Testing 30 slides at the same time
- **多种修复法：酸性修复、碱性修复、酶修复**
Multiple repairing methods: Acid repair, alkaline repair, enzyme repair
- **大用量试剂插拔式操作**
Plug-in operation for large volume reagent
- **在线更换大用量试剂**
Online change of large volume reagent
- **试剂位置、切片位置、二维码自动定位**
Automatic positioning by QR code for reagent bit, slide bit and
- **配套113种免疫组化一抗产品及免疫组化二抗产品**
Equipped with 113 kinds of IHC primary antibodies and secondary antibodies



全自动病理诊断系统

Fully-automatic Pathology Diagnostic System



2. 全自动多功能病理检测系统KS9800

Fully-automatic Multifunction Pathology Staining System KS9800

- **同时对42张玻片，上百个位点染色；**
To stain for 42 slides at the same time
 - **自带操作触屏显示设备，无需另外安装操作电脑，操作简单，使用方便；**
No additional computer needed; easy operation
 - **自动化免疫细胞化学染色系统：可同时对多样化标本进行细胞学染色；**
Auto staining for all kinds of ICC samples
 - **细胞标本无需包埋，经富集后可直接上机，仪器实现自动制片和染色功能；**
No need for embedding, automatic slide preparation and staining after enrichment
- **制片效果满足TBS要求，脱落细胞数量充足；**
Slide preparation produce adequate cells to meet the requirements of TBS
 - **封闭式反应系统，避免交叉污染；**
Closed reaction system to avoid cross reaction and pollution
 - **大容积试剂位10个（15mL）；小容积试剂位30个（1.5mL）；**
10 large volume reagent bits, 30 common reagent bits
 - **微量反应体系，7- 900微升；DAB试剂自动混匀**
Microdose reaction system, 7-900 microliters; Automatic mixture for DAB reagent

全自动病理诊断系统

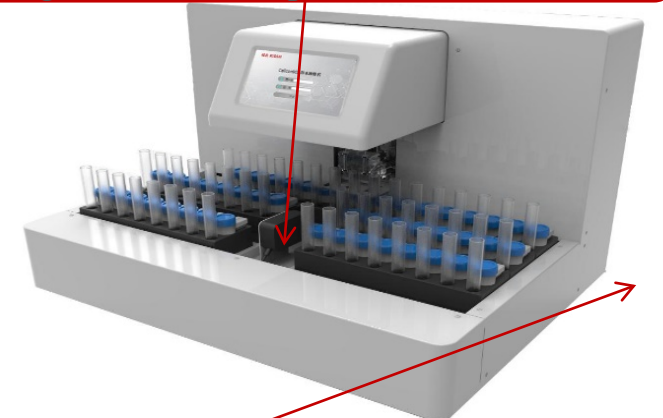
Fully-automatic Pathology Diagnostic System

3. 全自动液基细胞样本处理机

Fully-automatic Liquid-base cells sample processor

- **可一次性做24个样本（用时：30minutes），无需时时人工看守；样本量小时可极大程度节约时间**
Process with 24 samples at the same time; unattended execution, saving more time for few samples
- **全自动化，操作简洁方便**
Fully-automatic, easy operation
- **可中途添加样本，在一段时间内做到大批量**
Able to add samples during processing time
- **样本进行了富集，在样本不非常稀少的情况下，做到转移出来的细胞量充足**
Enrichment system ensuring adequate cells for testing
- **搅拌和换液冲刷，降低了粘液堵塞网孔的影响 能够做到制片背景清晰的同时也具有样本代表性**
Mixture and replacement of solutions ensure a clear struct of the slide

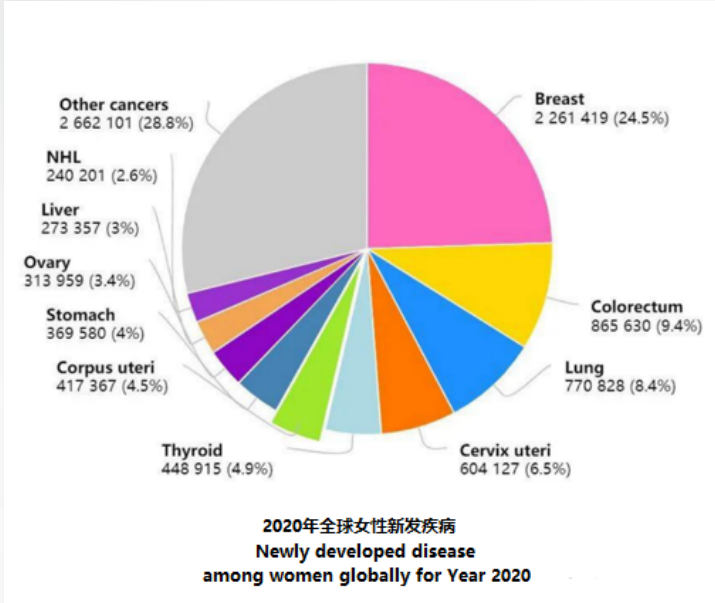
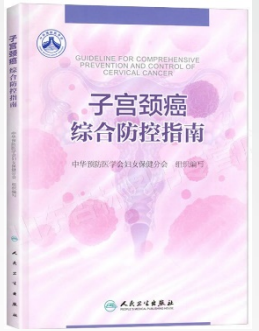
富集器：搅拌换液、保存样本以及过滤样本
Enrichment system: for mixing solution, storage and filter samples



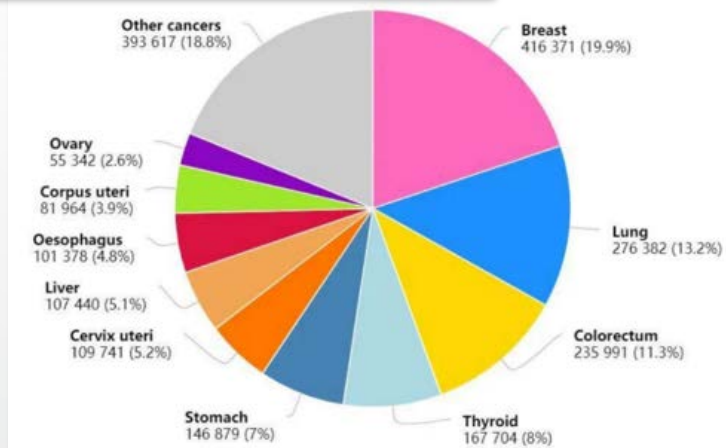
试管：保存富集处理后的样本 后续可直接手工拿到KS9800上进行制片染色
Tube: to storage enriched samples and to transfer to KS9800 for slide preparation and staining

特色方案--宫颈癌诊断

Specific Solution- Diagnosis for Cervical Cancer



2020年全球女性新发疾病
Newly developed disease
among women globally for Year 2020



2020年中国女性新发疾病
Newly developed disease
among women in China for Year 2020

1. p16检测试剂盒 (免疫细胞化学法)

- 临床应用: p16是一种重要的抑癌基因, 在**宫颈癌、鼻咽癌、肺癌、乳腺癌、卵巢癌和淋巴瘤**等多种肿瘤中均可见表达
- 一种新的宫颈癌体检筛查方法: 学会及指南一致认定p16是唯一有足够临床研究数据证实可用于宫颈癌前病变诊断的生物标记物
- 当常规HE染色结合P16免疫组化后诊断结果高度一致(92.0%), 各类型诊断符合率均 > 90.0%, 病变级别越高, 检出率越大, CIN 2 及其以上已达100.0%

p16 Antibody Test Kit (ICC)

- **Clinical application:** p16 protein is an important tumor suppressor gene and is expressed in a variety of tumors such as cervical cancer, nasopharyngeal cancer, lung cancer, breast cancer, ovarian cancer and lymphoma.

The new cervical cancer screening method: Pathology associations and the *Guideline for Comprehensive Prevention and Control of Cervical Cancer* all regarded p16 the only biomarker with sufficient clinical data to confirm that it can be used for the diagnosis of cervical precancerous lesions.

When combined HE staining with P16 IHC, the result was highly consistent (92.0%), the diagnostic compliance rate of all types was > 90.0%, and the higher the lesion level, the greater the detection rate, CIN 2 and above has reached 100.0%.

特色方案--宫颈癌诊断

Specific Solution- Diagnosis for Cervical Cancer

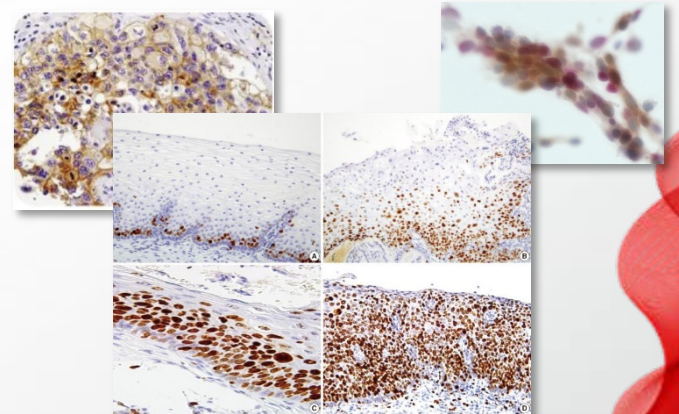
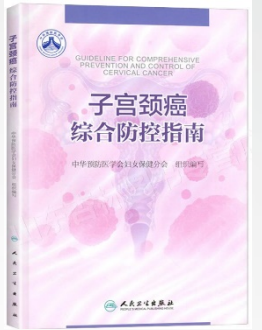
2. Ki-67抗体检测试剂盒

- 临床应用：Ki-67是一种增殖细胞相关的核抗原，主要用于判断细胞的增殖指数。Ki-67增殖指数高低与许多肿瘤的分化程度、浸润、转移以及预后密切相关。因此广泛用于**各种恶性肿瘤的标记**，用于肿瘤的研究
- Ki-67抗体检测作为常用的肿瘤检测，在第三方医学检验实验室、基层医院到三甲医院普遍适用

Ki-67 Antibody Test Kit

- **Clinical application:** Ki-67 is a proliferating cell-associated nuclear antigen that is mainly used to determine the proliferation index of cells. The level of Ki-67 proliferation index is closely related to the degree of differentiation, invasion, metastasis, and prognosis of many tumors. Therefore, it is widely used for the labeling of various malignant tumors and used in the study of tumors.

- As a commonly used tumor test, Ki-67 antibody detection is widely used in third-party medical testing laboratories, primary hospitals to tertiary hospitals.



特色方案--宫颈癌诊断

Specific Solution- Diagnosis for Cervical Cancer

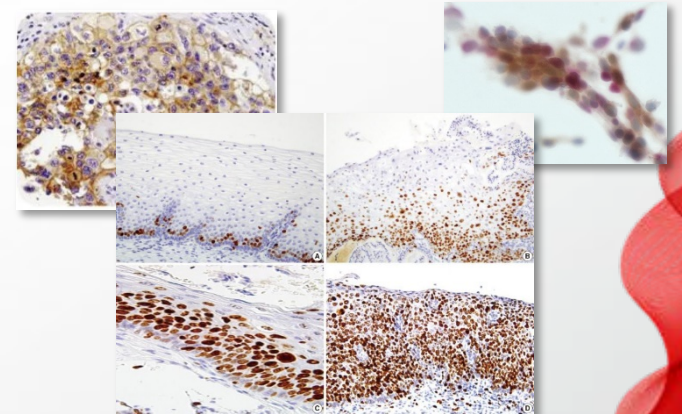
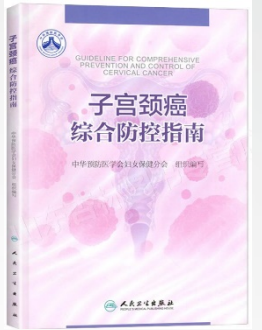
3. p16/Ki-67检测试剂盒（免疫细胞化学法）

- p16抑癌基因与 Ki-67两种蛋白同时表达于同一宫颈细胞中,说明细胞处于异常增殖状态。p16/Ki-67的表达量的**量化处理可作为宫颈组织病变等级及恶性程度的标尺辅助临床病理诊断**
- 祺氏p16INK4a /Ki-67免疫细胞化学技术可实现精准筛查初筛，提高敏感性和特异性；敏感性与 HPV检测相当 (>90%)，特异性显著优于HPV检测，具有统计学意义。双染也可作为细胞学检测的分流，减少阴道镜的过度转诊和资源浪费

p16/Ki-67 Test Kit (ICC)

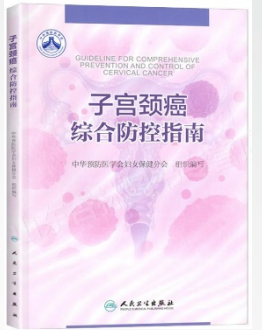
- The p16 tumor suppressor gene and Ki-67 protein are expressed in the same cervical cells at the same time, indicating that the cells are in an abnormal proliferative state. The quantitative treatment of p16/Ki-67 expression can be used as a yardstick for the grade and malignancy of cervical tissue lesions to assist clinicopathological diagnosis.

- KISSH p16INK4a/Ki-67 immunocytochemical technology can realize accurate screening and improve sensitivity and specificity. The sensitivity is comparable to HPV detection (>90%), and the specificity is significantly better than HPV detection, which is statistically significant. Dual staining can also be used as a shunt for cytology, reducing excessive referral and wasted resources for colposcopy.



特色方案--宫颈癌诊断

Specific Solution- Diagnosis for Cervical Cancer



4. PD-L1蛋白抗体试剂（免疫组织化学）

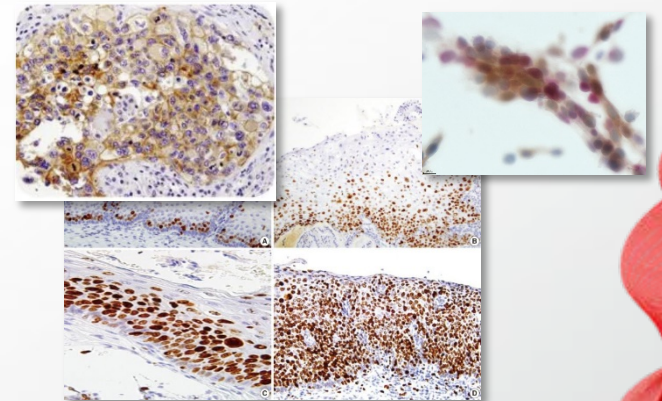
- 临床应用：PD-L1参与细胞的调节和免疫应答。广泛应用于**乳腺癌、肺癌、肾癌、肠癌、食道癌、卵巢癌、宫颈癌、胰腺癌、黑色素瘤、神经胶质瘤**等
- PD-L1的表达水平与PD-1/PD-L1抑制剂治疗的治疗效果有关，PD-L1表达检测可作为**伴随诊断**指导PD-1/PD-L1单抗药物的治疗决策、也可作为**补充诊断**协助筛选免疫治疗潜在获益人群。

PD-L1 Protein Antibody Reagent (ICC)

- Clinical application: PD-L1 is involved in cellular regulation and immune response.

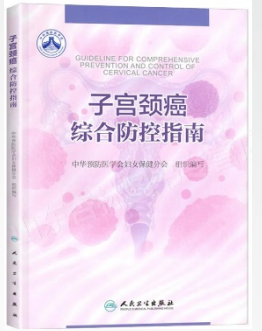
Widely used in breast cancer, lung cancer, kidney cancer, bowel cancer, esophageal cancer, ovarian cancer, cervical cancer, pancreatic cancer, melanoma, glioma, etc.

- The expression level of PD-L1 is related to the therapeutic effect of PD-1/PD-L1 inhibitor therapy, and PD-L1 expression detection can be used as a companion diagnosis to guide the treatment decision of PD-1/PD-L1 monoclonal antibody drugs, and can also be used as a supplementary diagnosis to assist in the screening of people with potential benefits from immunotherapy.



特色方案--宫颈癌诊断

Specific Solution- Diagnosis for Cervical Cancer

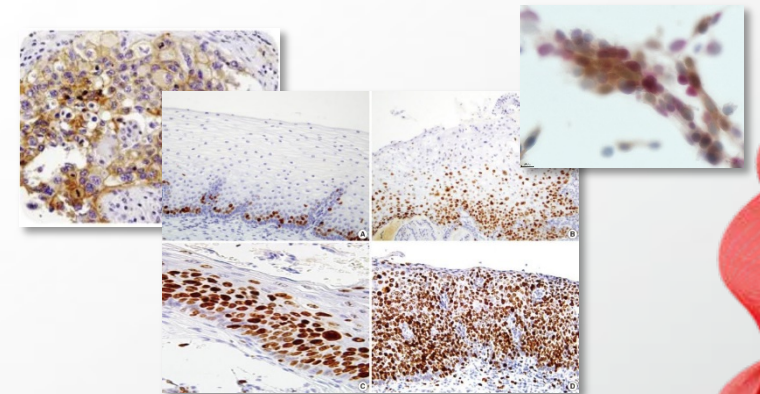


5. 人乳头瘤病毒(HPV)E7蛋白检测试剂盒 (免疫细胞化学法)

- 大量研究数据表明，来源于高危型HPV基因的E6、E7蛋白是导致宫颈癌发生和发展的主要驱动因子
- 直接检测细胞表达E7蛋白不仅在宫颈癌病理诊断中有很好的辅助作用，对于HPV相关肿瘤与非HPV相关性肿瘤的鉴别也将很有帮助

HPV E7 Protein Test Kit (ICC)

- A large number of research data show that E6 and E7 proteins derived from high-risk HPV genes are the main driving factors for the occurrence and development of cervical cancer
- Direct detection of cell expression of E7 protein not only has a good auxiliary role in the pathological diagnosis of cervical cancer, but also helps to distinguish HPV-related and non-related tumors



持续开发的配套试剂

Supporting reagents under continuous development

• 其他免疫组织化学 (IHC) 试剂 Other immunohistochemistry (IHC) reagents

ALK	BCL-2	BCL-6	CD10	CD34	CD3	CD45	CD56	CD5	CD68
CD8	CDX-2	CD138	CD79a	DOG1	E-Cadherin	EGFR	EMA	MLH1	MSH2
MSH6	MUC-1	MUC2	MUC5AC	MUC6	Napsin A	p120	P40	p53	P63
PD-L1	PSA	S100	SMA	synaptophysin	Vimentin	WT1	Ki-67	CEA	Desmin
D2-40	GATA3	p16	甲状腺转录因子-1 (TTF-1) Thyroid transcription factor-1	人乳头瘤病毒 (HPV) E7 Human papillomavirus E7	人乳头瘤病毒 16/18 E6 Human papillomavirus 16/18 E6	细胞角蛋白 (广谱) Cytokeratin (Broad Spectrum)	细胞角蛋白 20 Cytokeratin 20	细胞角蛋白 5&6 Cytokeratin 5&6	细胞角蛋白7 Cytokeratin 7

• 其他试剂 Other Reagents

苏木素 伊红染色液 HE Staining Solution	液基细胞和微生物处理、保存试剂 TCT Processing & Preservation Reagents	细胞保存液 Cell Preservation Solution	DAB染色液 DAB Staining Solution	苏木素染色液 Hematoxylin Staining Solution	清洗液 Flushing Solution	免疫组化抗原修复缓冲液 IHC Antigen Retrieval Buffer	巴氏染液 Pap Staining Solution	脱蜡液 Dewaxing Solution	药敏接种培养液 Drug Sensitive Inoculum	缓冲液 Buffer	革兰染色液 Gram Staining Solution
-----------------------------------	---	-------------------------------------	---------------------------------	---	--------------------------	---	-------------------------------	--------------------------	------------------------------------	---------------	---------------------------------

全自动人工智能体外诊断产品

Fully Automatic Artificial Intelligence IVD Products

- 人工智能玻片影像扫描系统
- Artificial Intelligence Slide Image Scanning System



单片版

Monolithic version



高速高通量版

High-speed and high-throughput version



**新双工位版
(1200片)**

New duplex version (1200 Slides)

全自动免疫学POCT仪器及配套试剂

Fully-automatic Immunological POCT Devices and Related Reagent

全自动POCT体外诊断系统

—特定蛋白免疫分析仪

- **适用范围：**用于检测血清、血浆、尿液中的特定蛋白的浓度
- **仪器原理：**采用免疫散射比浊法，使用平行单色光束通过比色杯中溶液，遇到抗原抗体反应产生的乳胶颗粒结合物，会发生散射，散射光强度和该乳胶颗粒结合物浓度成正比，通过测量散射光强度可以计算特定蛋白的含量。通过测量散射光强度可以计算特定蛋白的含量
- **优势特定：**具有全自动、操作简便、机身小成本少，应用场景多

Fully-automatic POCT IVD System- Specific protein immunoassays device

- **Applications:** to detect the concentration of specific proteins in serum, plasma, urine
- **Theory:** immunoscattering turbidimetric method, using a parallel monochromatic beam through the cuvette solution, encountering the latex particle conjugate produced by the antigen-antibody reaction, scattering will occur, the scattered light intensity is proportional to the concentration of the latex particle conjugate, and the content of a specific protein can be calculated by measuring the scattered light intensity. By measuring the scattered light intensity, the content of a particular protein can be calculated
- **Advantages:** fully-automatic, easy operation, smaller size, lower cost, multiple applications



全自动免疫学POCT仪器及配套试剂

Fully-automatic Immunological POCT Devices and Related Reagent

全自动POCT体外诊断系统

—配套试剂

• 试剂介绍:

1. 红细胞渗透脆性 (EOF) 检测试剂盒(一管法)
2. 血清淀粉样蛋白A (SAA) 测定试剂盒 (胶乳增强免疫比浊法)
3. C反应蛋白 (CRP) 测定试剂盒 (胶乳增强免疫比浊法)
4. 降钙素原 (PCT) 测定试剂盒 (胶乳增强免疫比浊法)

• 优势特点:

红细胞渗透脆性 (EOF) 检测在临床上适用于遗传性球形红细胞增多症、自身免疫性溶血性贫血、阻塞性黄疸、地中海贫血等多种疾病的诊断, 此红细胞渗透脆性 (EOF) 检测试剂盒为国内独家领先技术



Fully-automatic POCT IVD System- Reagent

- **Reagent:** EOF Test Kit (One-tube method)

SAA Test Kit (turbidimetry method)

CRP Test Kit (turbidimetry method)

PCT Test Kit (turbidimetry method)

- **Advantages:** Erythrocyte osmotic fragility (EOF) detection is clinically suitable for the diagnosis of hereditary globular polycythemia, autoimmune hemolytic anemia, obstructive jaundice, thalassemia and other diseases, and this EOF Test Kit is the exclusive leading technology in China

全自动免疫学POCT仪器及配套试剂

Fully-automatic Immunological POCT Devices and Related Reagent

发明专利号

Invention Patent No.: ZL201910833578.8

1. 红细胞渗透脆性 (EOF) 检测试剂盒(一管法)

- **试剂用途:** 用于体外定性检测人全血中的红细胞渗透脆性, 临床主要用于红细胞渗透脆性降低的辅助诊断
- **检验原理:** 正常的红细胞为双凹圆盘形, 若将红细胞置于低渗溶液中, 因细胞内外存在渗透压差, 水分子进入红细胞, 使其发生肿胀, 乃至红细胞破裂而发生溶血。红细胞在低渗盐溶液中出现溶血的特征即为红细胞渗透脆性, 其主要取决于红细胞的表面积与体积之比。表面积大而体积小者对低渗盐水溶液的抵抗力较大(脆性较小), 反之则抵抗力较小(脆性增加)

EOF Test Kit (One-tube Method)

- **Intended Use:** for in vitro qualitative detection of erythrocyte osmotic fragility in human whole blood, and is mainly used clinically for auxiliary diagnosis of reduced fragility of erythrocyte osmotic fragility

- **Theory:** Normal erythrocytes are biconcave disc-shaped, if the erythrocytes are placed in a hypotonic solution, due to the osmotic pressure difference between the inside and outside of the cell, water molecules enter the erythrocytes, causing them to swell, and even rupture the erythrocytes and hemolysis. The hemolysis of erythrocytes in hypotonic saline solutions is characterized by erythrocyte osmotic fragility, which depends mainly on the ratio of the surface area to volume of erythrocytes. Large surface area and small volume are more resistant to hypotonic saline solutions (less brittle) and vice versa less resistant (increased brittleness)



其他事项参见续页

全自动免疫学POCT仪器及配套试剂

Fully-automatic Immunological POCT Devices and Related Reagent

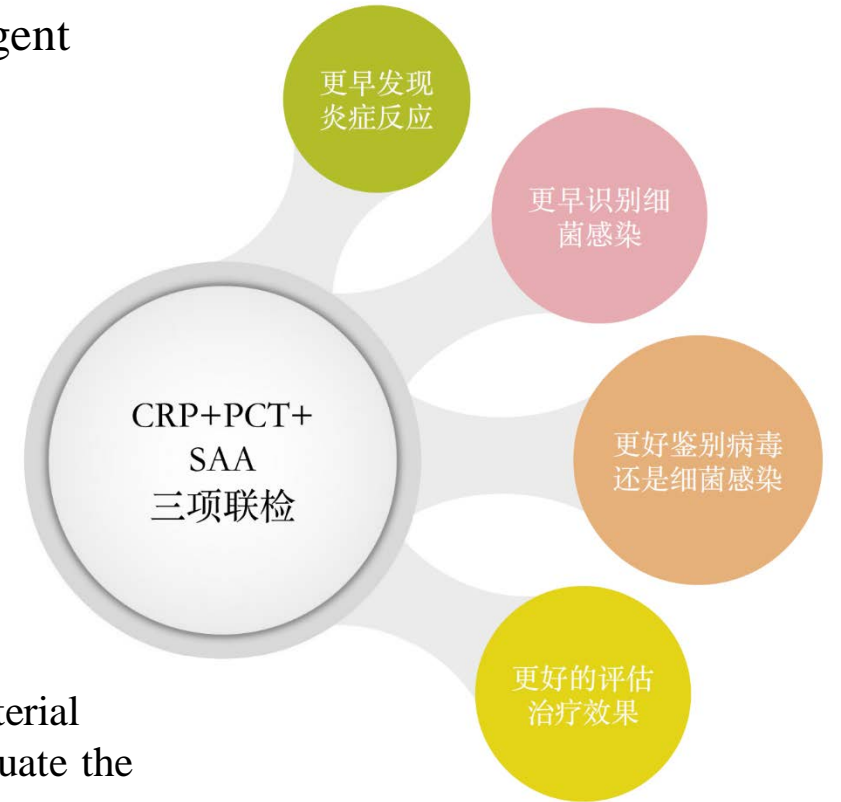
2. 感染炎症解决方案——炎症三项联合应用

CRP、SAA、PCT三项联合检测可有效鉴别细菌感染和病毒感染，预测心血管事件风险，评估肿瘤疾病的预后。应用在体检中心、急诊、门诊、ICU以及儿科、检验科、免疫科、传染科等科室

Infection inflammatory solution- the combination application for Inflammation

The combined detection of CRP, SAA and PCT can effectively distinguish bacterial infection and viral infection, predict the risk of cardiovascular events, and evaluate the prognosis of tumor diseases.

It is used in physical examination centers, emergency departments, outpatient clinics, ICUs, pediatrics, laboratory departments, immunology, infectious diseases and other departments



检测项目 Item	细菌感染 Bacterial Infection	病毒感染 Viral Infection	其他炎症 Other Inflammation
CRP	升高 ↑	可能升高 - or ↑	升高 ↑
PCT	升高 ↑	不升高 -	升高 ↑
SAA	升高 ↑	升高 ↑	升高 ↑

全自动核酸提取仪及新冠检测试剂系列产品

Fully-automatic PCR Extraction Device and SARS-CoV-2 Test Kit Series

1. 全自动核酸提取仪

- **适用范围：**用于核酸提取或纯化试剂盒（磁珠法），对血清、血浆、病毒培养液、宫颈脱落细胞、尿液等多种临床样本的病毒核酸（DNA和RNA）提取纯化，分离出高质量病毒核酸
- **采用磁珠技术实现核酸的自动化提取纯化，并用于下游的各项检测**
- **产品特点：**全自动试剂搭配一次性耗材，快速提取，操作时间短，15-40分钟/次，实现裂解加热和洗脱加热，具有紫外线杀菌功能，仪器运行安静稳定，电容触摸屏，操作简便，有远程控制和无线wifi功能，手机可监控系统。

Fully-automatic PCR Extraction Device

- **Application:** extract and purify viral nucleic acid (DNA and RNA) from serum, plasma, viral culture fluid, cervical exfoliated cells, urine and other clinical samples to isolate high-quality viral nucleic acid
- **Theory:** Magnetic bead technology
- **Advantages:** fully-automatic method reagent, disposable consumables, rapid extraction, 15-40 minutes/test, ultraviolet sterilization function, remote control, Mobile phone monitoring available, wifi function available



全自动核酸提取仪及新冠检测试剂系列产品

Fully-automatic PCR Extraction Device and SARS-CoV-2 Test Kit Series

2. 核酸提取试剂盒 病毒DNA/RNA提取(磁珠法)

- 具有独特分离作用的磁珠和缓冲液系统，可以快速、高度敏感、高效地从样本中提取高纯度病毒DNA/RNA
- 提取纯化的核酸可用于酶切、逆转录、PCR、RT-PCR、Southernblot等各种常见下游实验
- 精心设计的超顺磁性磁珠，使样本核酸提取效果更出众



PCR Extraction Test Kit

(viral DNA/RNA extraction- Magnetic bead method)

- A unique separation system of magnetic beads and buffers for fast, highly sensitive, and efficient extraction of high-purity viral DNA/RNA from samples
- The extracted and purified nucleic acids can be used for various common downstream experiments such as digestion, reverse transcription, PCR, RT-PCR, Southernblot and so on
- Well-designed superparamagnetic beads make it more outstanding for nucleic acid extraction of samples

全自动核酸提取仪及新冠检测试剂系列产品

Fully-automatic PCR Extraction Device and SARS-CoV-2 Test Kit Series



新冠抗原检测试剂盒（胶体金法）
SARS-CoV-2 Antigen Test Kit (GICA)



新冠抗体检测试剂盒（胶体金法）
SARS-CoV-2 Antibody Test Kit (GICA)



新冠抗原/流感A/B三联检测试剂盒
SARS-CoV-2/Influenza A/B Test Kit (GICA)



新冠抗体检测试剂盒（比浊法）
SARS-CoV-2 Antibody Test Kit
(Immunoturbidimetry)



新冠中和抗体检测试剂盒
SARS-CoV-2 Neutralizing Antibody Test Kit

祺氏慧心医学检验实验室

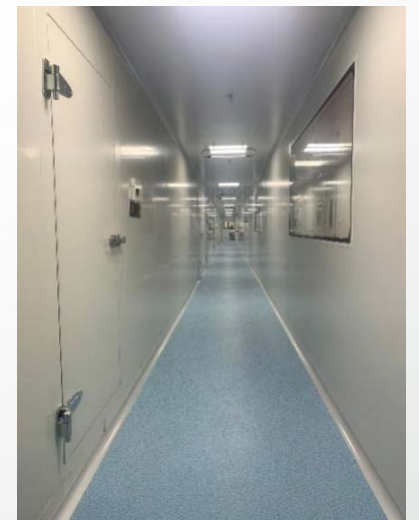
Qishi Huixin Medical Laboratory

深圳祺氏慧心医学检验实验室于2020年10月14日成立，位于宝安区福海街道和平社区重庆路骏丰中城智造创新园，面积约2000平方米，实验室设施完备，有一系列专业的检验设备，全自动核酸提取仪、全自动医用PCR分析系统等仪器，能够为客户带来多种检验项目。实验室已获《广东省二级病原微生物实验室备案》（新冠检测），并参与深圳市各区多次新冠核酸筛查工作。

实验室按照二级生物安全条件建设，包括样本接收室、样本冷库、试剂准备室、核酸提取室、扩增室、文库构建室、测序室、产物分析室、电泳室、废弃物暂存室、及灭菌间等，全面投入运营后，日检测量可达到10万管。

Shenzhen Qishi Huixin Medical Laboratory was established in Oct 14th, 2020 in Bao'an district, Shenzhen, covers an area of 2000m². The laboratory is well equipped with Fully-automatic Extraction Device, Fully-automatic Medical PCR Analysis System and other testing devices, which enable it to provide multiple testing items for clients.

It has been taken multiple participations in the PCR Test Project driven by the Shenzhen Government, with a daily testing volume at 100,000.



企业认证 全球荣誉

Global Certification and Qualification

公司荣誉: We are:

- **国家高新技术企业**
National High-tech Company
- **商务部医疗物资“出口白名单”企业**
Ministry of Commerce Whitelist Export Company for Medical Supplies
- **欧盟HSC白名单企业**
EU Common List listed Company
- **坪山重点产业领域企业**
Key Industrial Field Company for Pingshan Dist
- **深圳市医疗器械行业协会会员单位**
Member of Shenzhen Medical Device Industry Association
- **深圳市医疗器械质量管理促进会会员单位**
Member of Shenzhen Medical Device Quality Management Promotion Association
- **广东省科技厅“传染病诊断试剂产业技术创新联盟”企业**
Science and Technology Dept. of Guangdong Province "Infectious Disease Diagnostic Reagent Industry Technology Innovation Alliance" Company



医疗物资“出口白名单”



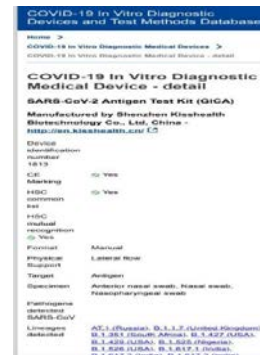
厄瓜多尔注册证



英国MHRA注册凭证



欧盟CE证书



Europe HSC Whitelist



Indonesia MOH White List



ISO13485 产品质量体系报告



管理团队

Powerful Management Team



卢岳军 Dr.Luke

副总经理

Deputy General Manager

深圳市高层次领军人才，具有10年以上体外诊断试剂的研发、临床、注册和转产等完整的项目开发、管理经验，5年以上研发团队管理经验。

Shenzhen high-level leading talents with more than 10 years of complete project development and management experience in IVD reagent development, clinical research, registry and production transfer, etc. More than 5 years of R&D team management experience.



廉正鑫 Dr.Lian

深圳祺氏创始人 CEO

Founder of Shenzhen Kisshealth Biotechnology Co.,Ltd. CEO

曾任全球最大的即时检测快速诊断POCT公司Alere的中国区市场负责人；
曾就职中国人民解放军武汉总医院检验科和病理科

Used to be the head of the Chinese market at Alere, the world's largest POCT rapid diagnostic company;
Used to worked in the Laboratory and Pathology Department of Wuhan General Hospital of the Chinese People's Liberation Army.



祁晖 Dr.Qi

项目管理部

Project Management Department

武汉大学生命科学硕士学位，专注于分子生物遗传学专业，中国科学院先进技术研究院研究经历，具备多年国际一流医疗设备上市企业深圳迈瑞生物医疗电子股份有限公司，仪器及免疫学研发项目管理和团队管理经验。在高值医疗器械及耗材研领域具备深厚的专业项目经验

Master's degree in Life science from Wuhan University, focusing on molecular biogenetics, with research experience at the Institute of Advanced Technology, Chinese Academy of Sciences.Used to worked in Shenzhen Mindray Biomedical Electronics Co., Ltd., a world-class listed medical equipment company, with years of experience in instrument and immunology R&D project management and team management. Profound professional project experience in the field of high-value medical devices and consumables research.

发展目标

Development Strategy

全自动IHC产品系列

Fully-automatic IHC Product Series

开发全自动远程免疫/分子病理
诊断产品系统平台及配套试剂

Develop fully-automatic remote
immune/molecular pathology diagnostic
product system and supporting reagents



全自动TLA模块化POCT

Fully-automatic TLA Modular POCT

创新性TRBT产品，新生儿遗传病筛查体
外诊断产品；
感染因子及老年慢性病体外诊断系统平台；
全自动化产品进口替代；



- Innovative TRBT products, IVD products for newborn genetic disease screening
- IVD system for infectious factors and chronic diseases of the elderly
- Import substitution of fully-automated products

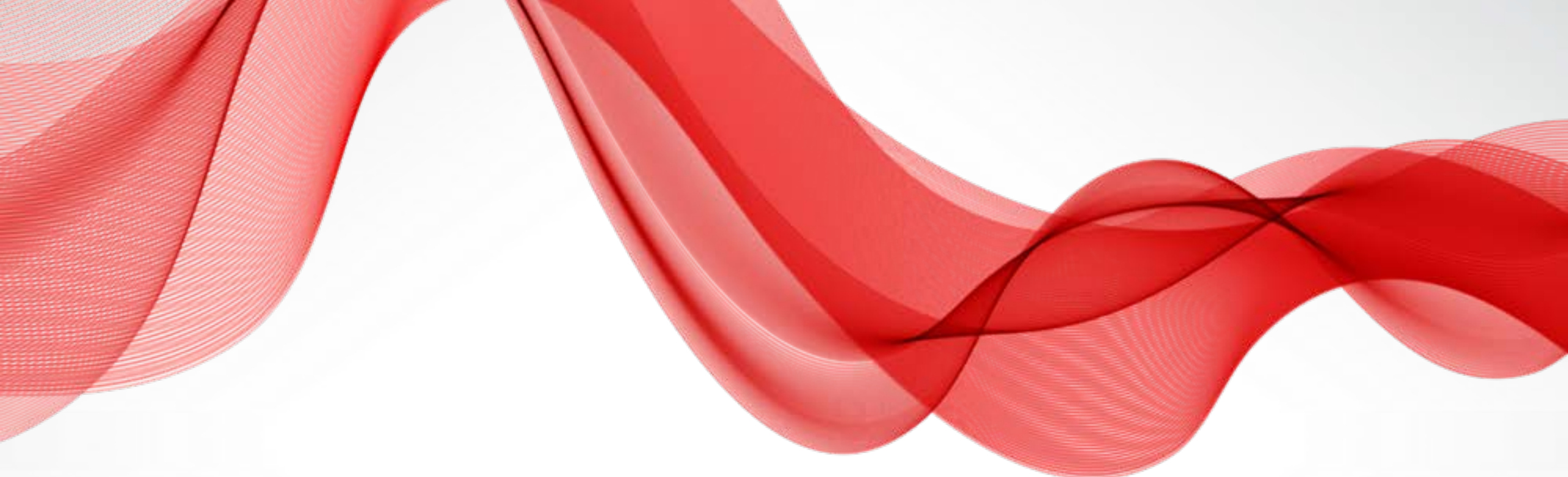
KISSH 祺氏



人工智能形态学IVD诊断系统

Artificial Intelligence Morphology
IVD System

- 全视野的数字化切片/全切片数字化图像
- 全自动显微镜高分辨数字图像
- 计算机对图像高精度多视野无缝隙拼接
- Full-field digitized slice/full-slice digitized image
- High-resolution digital images of fully automated microscopes
- High-precision multi-view seamless stitching of images by computer



谢谢
Thank you!