

# PARADOX LITHIUM PROJECT, USA

## 美国PARADOX锂项目

Investor Presentation – September, 2023 / 投资者报告 – 2023年9月

Anson Resources | ASX: ASN

# DISCLAIMER & IMPORTANT NOTICE

## 免责声明与重要通知

The information contained in this confidential document ("Presentation") has been prepared by Anson Resources Limited (the "Company"). It has not been fully verified and is subject to material updating, revision and further amendment. The Information may not be distributed to others at any time without the prior written consent of the Company (including the presentation) any copies thereof, and will destroy all analysis, complications and other documents or writings whatsoever containing or reflecting any such material.

While the information contained herein has been prepared in good faith, neither the Company nor any of its shareholders, directors, officers, agents, employees or advisers give, have given or have authority to give, any representations or warranties (express or implied) as to, or in relation to, the accuracy, reliability or completeness of the information in this Presentation, or any revision thereof, or of any other written or oral information made or to be made available to any interested party or its advisers (all such information being referred to as "Information") and liability therefore is expressly disclaimed. Accordingly, neither the Company nor any of its shareholders, directors, officers, agents, employees or advisers take any responsibility for, or will accept any liability whether direct or indirect, express or implied, contractual, tortious, statutory or otherwise, in respect of, the accuracy or completeness of the Information or for any of the opinions contained herein or for any errors, omissions or misstatements or for any loss, howsoever arising, from the use of this Presentation.

Neither the issue of this Presentation nor any part of its contents is to be taken as any form of commitment on the part of the Company to proceed with any transaction and the right is reserved to terminate any discussions or negotiations with any prospective investors. In no circumstances will the Company be responsible for any costs, losses or expenses incurred in connection with any appraisal or investigation of the Company. In furnishing this Presentation, the Company does not undertake or agree to any obligation to provide the recipient with access to any additional information or to update this Presentation or to correct any inaccuracies in, or omissions from, this Presentation which may become apparent.

This Presentation should not be considered as the giving of investment advice by the Company or any of its shareholders, directors, officers, agents, employees or advisers. Each party to whom this Presentation is made available must make its own independent assessment of the Company after making such investigations and taking such advice as may be deemed necessary. In particular, any estimates or projections or opinions contained herein necessarily involve significant elements of subjective judgment, analysis and assumptions and each recipient should satisfy itself in relation to such matters.

This Presentation includes certain statements that may be deemed "forward-looking statements". All statements in this discussion, other than statements of historical facts, that address future activities and events or developments that the Company expects, are forward-looking statements. Although the Company believes the expectations expressed in such forward-looking statements are based on reasonable assumptions, such statements are not guarantees of future performance and actual results or developments may differ materially from those in the forward-looking statements. Factors that could cause actual results to differ materially from those in forward-looking statements include market prices, continued availability of capital and financing, and general economic, market or business conditions. Investors are cautioned that any such statements are not guarantees of future performance and that actual results or developments may differ materially from those projected in forward-looking statements.

# PARADOX LITHIUM PROJECT/PARADOX 锂项目

100% OWNED / 100% 拥有

Anson Resources Ltd, via subsidiary A1 Lithium Inc, is developing the Paradox Lithium Project in Utah, USA / Anson Resources Ltd 通过子公司 A1 Lithium Inc 正在开发美国犹他州的 Paradox 锂项目

## Made in the USA / 美国制造

Anson will play a critical role in the onshoring of the lithium supply chain to North America enabling the electrical transformation of the U.S.A. Anson can benefit from the EV adoption policies which provide consumer subsidies and low-cost loans to producers. / Anson 将在锂供应链向北美转移的过程中发挥关键作用，从而实现美国的电气化转型。Anson 可从电动汽车鼓励政策中获益，该政策为生产商提供消费者补贴和低成本贷款。

## Green lithium / 绿色锂

Anson's lithium extraction process is more efficient, uses less water, and produces less CO2 than hard rock and brine evaporation process. Higher purity (99.95%) delivers longer life batteries. / 与硬岩和卤水蒸发工艺相比，Anson 的锂提取工艺更加高效，用水量更少，产生的二氧化碳也更少。纯度更高（99.95%）的电池寿命更长。

## Commercially proven technology / 商用成熟的技术

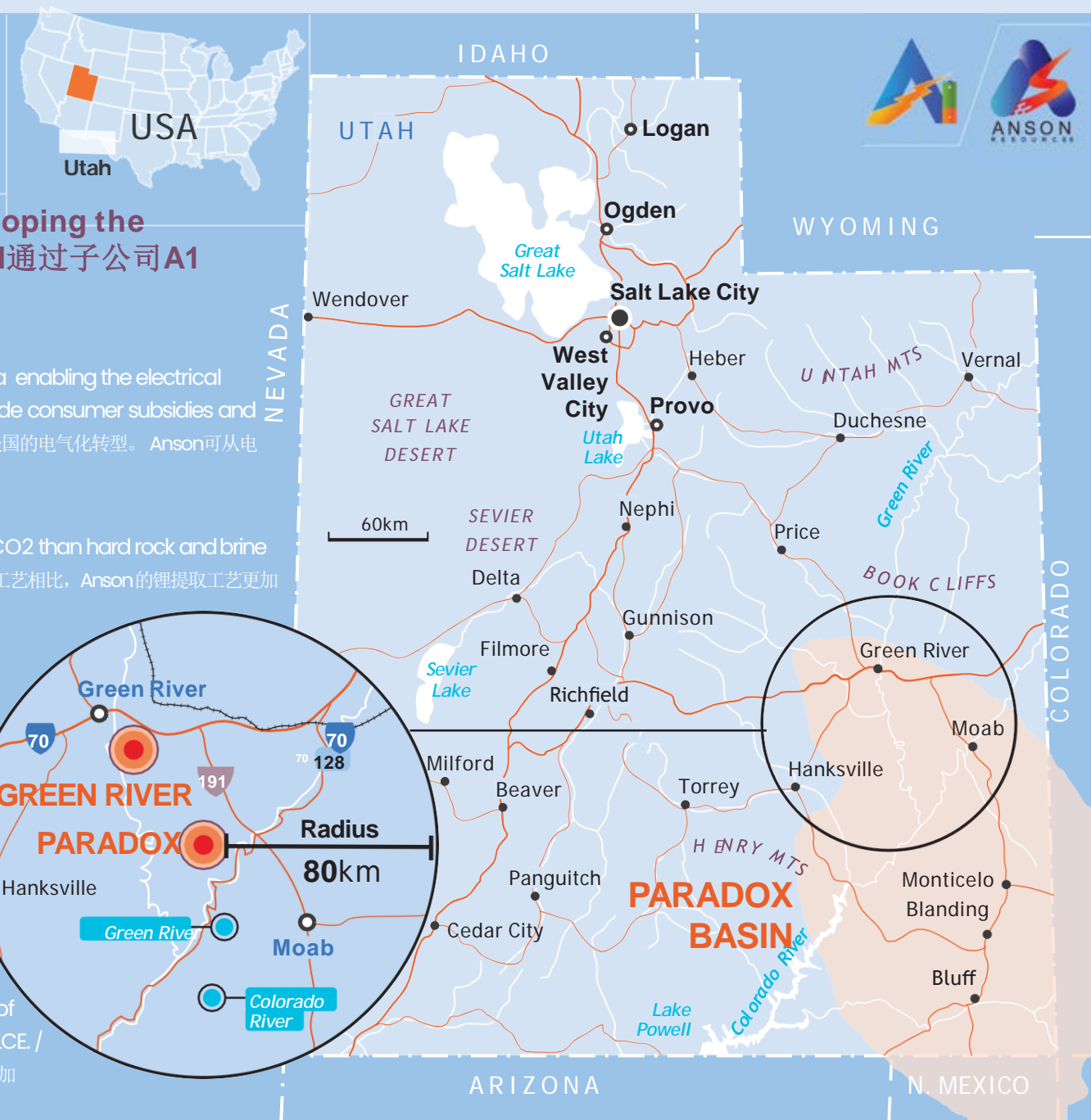
Anson's lithium extraction process technology has been in commercial use since 2018 and currently produces 32ktpa of LCE. / Anson 的锂提取工艺技术自 2018 年开始投入商业使用，目前年产 32 万吨碳酸锂当量

## Strong Project Economics / 强劲的项目经济价值

Anson's DFS (Sept 2022) to produce 13,000 tpa of LCE confirms a low-cost and long-life project with material upside to include bromine production and further expand lithium production. / Anson 的最终可行性研究（2022 年 9 月）年产 13,000 吨碳酸锂当量，是一个低成本、长寿命的项目，具有包括溴生产和进一步扩大锂生产在内的巨大上升空间。

## Growth / 增长

Anson's paradox basin projects, in the USA, have a JORC resources of 1.04 million tonnes of Lithium Carbonate Equivalent (LCE) and drilling programs are targeting a further 3 MT of LCE. / Anson 位于美国的 paradox 盆地项目的 JORC 资源量为 104 万吨碳酸锂当量，钻探计划的目标是再增加 300 万吨碳酸锂当量。

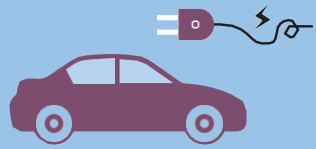


# PROJECT WORKSTREAMS UPDATE

## 项目工作流程更新



### OFFTAKE / 承购



**Negotiations continuing. Sample Demonstration Plant setup and producing samples**  
/ 协商在继续, 示范工厂设定和正在生产样本



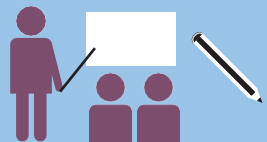
### APPROVALS / 批准



**~ 50% of required approvals submitted or approved** / 已提交或批准约50%所需的批准事项



### FEED / 前端工程设计



**Worley engaged for Front-end Engineering Design** / 聘请Worley进行前端工程设计



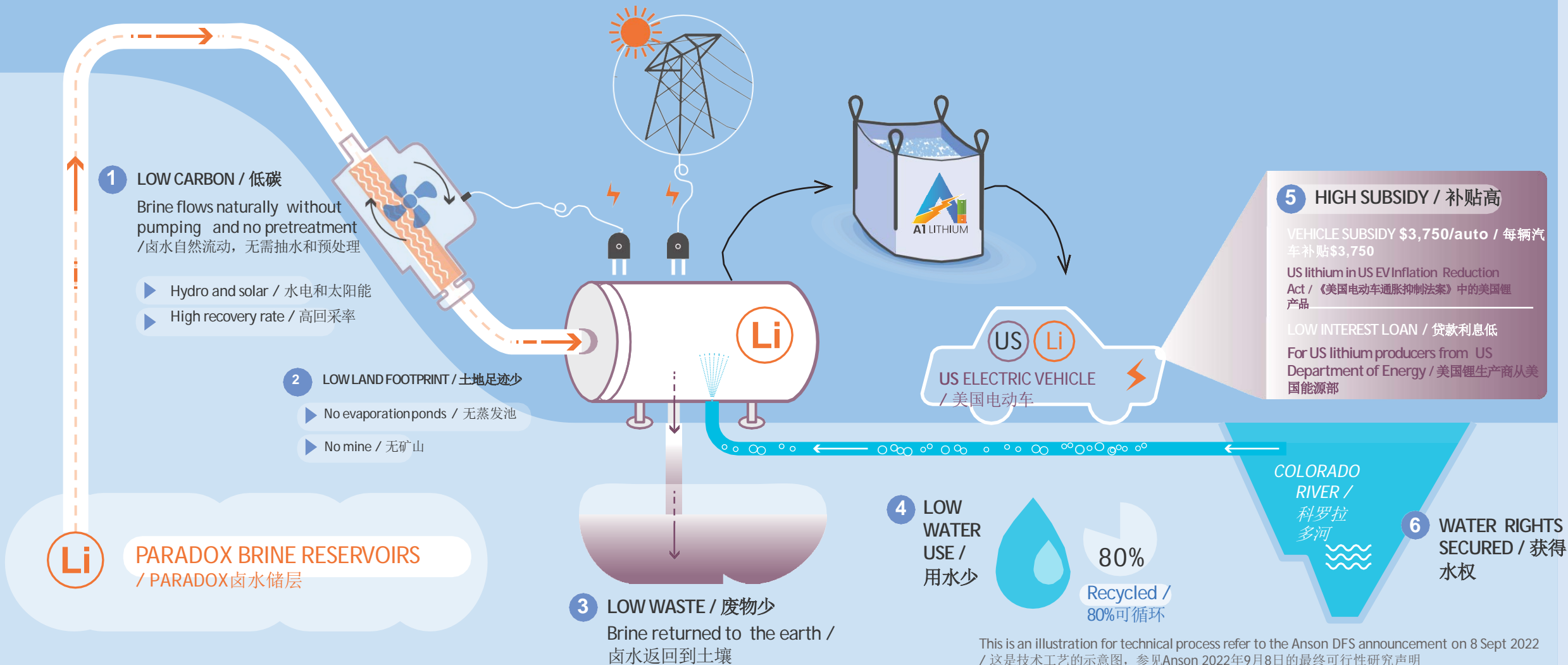
### FINANCING / 融资



**Strong Project Financials** / 强劲的项目财务状况



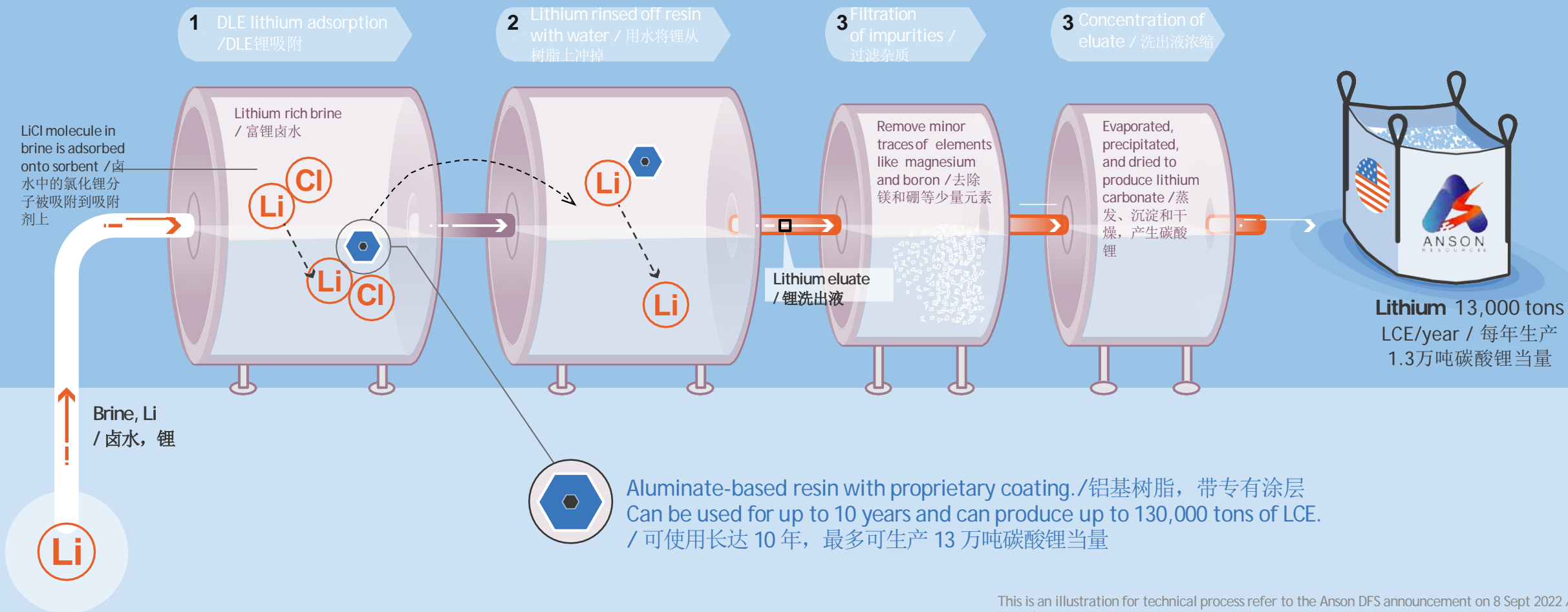
# THE ANSON WAY: / ANSON采用的方式: DIRECT LITHIUM EXTRACTION (DLE) LOW CARBON, WASTE AND WATER /直接锂提取 (DLE), 低碳、废物少、用水少



This is an illustration for technical process refer to the Anson DFS announcement on 8 Sept 2022 / 这是技术工艺的示意图, 参见Anson 2022年9月8日的最终可行性研究声明

# DIRECT LITHIUM EXTRACTION PROCESS / 直接锂提取工艺

## COMMERCIAL PROVEN TECHNOLOGY / 商用成熟的技术



This is an illustration for technical process refer to the Anson DFS announcement on 8 Sept 2022 / 这是技术工艺的示意图，参见Anson 2022年9月8日的最终可行性研究声明

# Paradox Project – Compelling Position Amongst DLE Peers



- ✓ **Advanced Development Stage**
- ✓ **Proven Technology Partner**



- **US Projects strong funding support**
- **Koch supplying DLE to major projects**

Company	Livent	Lanke Lithium	Minmetal	Zangge Lithium	Jintai Lithium	Tibet National	EVE Energy	Eramet	Anson Resources	Standard Lithium	Controlled Thermal	Compass Minerals	Rio Tinto	Vulcan Energy	Lake Resources
Project	Hombre	Yiliping Lake	Minmetal Salt Lake	Chalkhan Lake	Mahai Lake	Tibet	Qinghai Salt Lake	Centenario	Paradox Lithium	Smackover	Salton Sea	Ogden, Great Salt lake	Rincon Salar	Zero Carbon lithium	Kachi
Country	Argentina	China	China	China	China	China	China	Argentina	USA	USA	USA	USA	Argentina	Germany	Argentina
DLE Provider	Proprietary	Proprietary	Sunresin	Sunresin	Sunresin	Sunresin	Sunresin	Proprietary	Sunresin	<b>KOCH</b>	<b>KOCH</b>	Energy Source Minerals	Undisclosed	Proprietary	Lilac
Project / Study Stage	Producing	Producing	Producing	Producing	Producing	Construction	Construction	Construction	DFS/FEED	DFS	PFS	PFS	FEED	DFS	PFS
Production Target (LCE)	40ktpa	30ktpa	6ktpa	10ktpa	7ktpa	8.8ktpa <sup>1</sup>	10ktpa	24ktpa	13ktpa	5.5ktpa	25ktpa	11ktpa	3ktpa	21.12ktpa <sup>1</sup>	12.5ktpa
Capex /tpa	22,500				15,000		7,205	30,625	38,000	66,363		23,818	111,666	75,083 <sup>2</sup>	52,000 <sup>3</sup>
Opex (US\$/t LCE)	n/a	n/a	3,000 <sup>4</sup>	4,500 <sup>4</sup>	3,000 <sup>4</sup>	n/a	n/a	3,500	4,368	6,810	n/a	4,347		4,621 <sup>2</sup>	5,900 <sup>3</sup>

Note – Based on publicly available information, refer to appendix for sources. For projects which are not producing or in construction, the production targets are based on most recent technical study, such as a feasibility study. Future expansions and Phase 2 production targets are excluded from this analysis. 1 – EVE Energy 10ktpa Lithium Hydroxide and Vulcan Phase 1 DFS production target of 24ktpa Lithium Hydroxide, converted to Lithium Carbonate Equivalent using conversion ratio of 0.88. 2 – Converted from Euro to USD using 1.07 EUR:USD FX rate, as of 14 September 2023. 3 – Lake Resources market update 19 June 2023 using midpoint of estimates.. 4. From interview data.

# Paradox项目 – DLE类别项目中出类拔萃



- ✓ 高级开发阶段
- ✓ 成熟技术合作伙伴



- 美国项目强大的资金支持
- Koch向大型项目提供DLE

公司	Livent	Lanke Lithium	Minmetal	Zangge Lithium	Jintai Lithium	Tibet National	EVE Energy	Eramet	Anson Resources	Standard Lithium	Controlled Thermal	Compass Minerals	Rio Tinto	Vulcan Energy	Lake Resources
项目	Hombre	Yiliping Lake	Minmetal Salt Lake	Chalkhan Lake	Mahai Lake	Tibet	Qinghai Salt Lake	Centenario	Paradox Lithium	Smackover	Salton Sea	Ogden, Great Salt lake	Rincon Salar	Zero Carbon lithium	Kachi
国家	阿根廷	中国	中国	中国	中国	中国	中国	阿根廷	美国	美国	美国	美国	阿根廷	德国	阿根廷
DLE 提供商	保密	保密	蓝晓	蓝晓	蓝晓	蓝晓	蓝晓	保密	蓝晓	KOCH	KOCH	Energy Source Minerals	未披露	保密	Lilac
项目 / 研究阶段	生产	生产	生产	生产	生产	建设	建设	建设	最终可行性研究/前端工程设计	最终可行性研究	预可行性研究	预可行性研究	前端工程设计	最终可行性研究	预可行性研究
产量目标 (碳酸锂当量)	40ktpa	30ktpa	6ktpa	10ktpa	7ktpa	8.8ktpa <sup>1</sup>	10ktpa	24ktpa	13ktpa	5.5ktpa	25ktpa	11ktpa	3ktpa	21.12ktpa <sup>1</sup>	12.5ktpa
资本开支 /tpa	22,500				15,000		7,205	30,625	38,000	66,363		23,818	111,666	75,083 <sup>2</sup>	52,000 <sup>3</sup>
运营开支(美元/吨碳酸锂当量)	不适用	不适用	3,000 <sup>4</sup>	4,500 <sup>4</sup>	3,000 <sup>4</sup>	不适用	不适用	3,500	4,368	6,810	不适用	4,347		4,621 <sup>2</sup>	5,900 <sup>3</sup>

注 – 基于公开发布的信息，参见附录中的来源。对于没有投产或处于建设阶段的项目，产量目标基于最近的技术研究，例如可行性研究。此分析不包括未来扩张和二期产量目标。1 – EVE Energy每年1万吨氢氧化锂和Vulcan二期最终可行性研究产量目标每年2.4万吨氢氧化锂，采用0.88的转换率转换为碳酸锂当量。2 – 采用欧元兑美元1.07的汇率进行货币转换，截止2023年9月14日。3 – 利用预期值的中值，2023年6月19日Lake Resources市场更新。4.来自采访数据



# SUNRESIN: ANSON'S PARADOX PROJECT PARTNER / 蓝晓: ANSON的 PARADOX项目合作伙伴

## COMMERCIALLY PROVEN / 商用成熟



### Commercially proven technology / 商用成熟的技术

- Commercial production since 2018 / 自2018年开始商业化生产
- 7 Projects 32k tpa LCE, 40k tpa under construction / 7个项目, 每年生产3.2万吨碳酸锂当量, 在建产能为每年4万吨



### Engineering Design and Procurement (EPC) / 工程设计及采购

- Only resin manufacture that designs process and supplies equipment / 只有树脂制造设计工艺和供应设备
- Key process technology / 关键工艺技术



### Long life resin / 树脂寿命长

- Resin expected 10-year life span / 树脂寿命预计10年



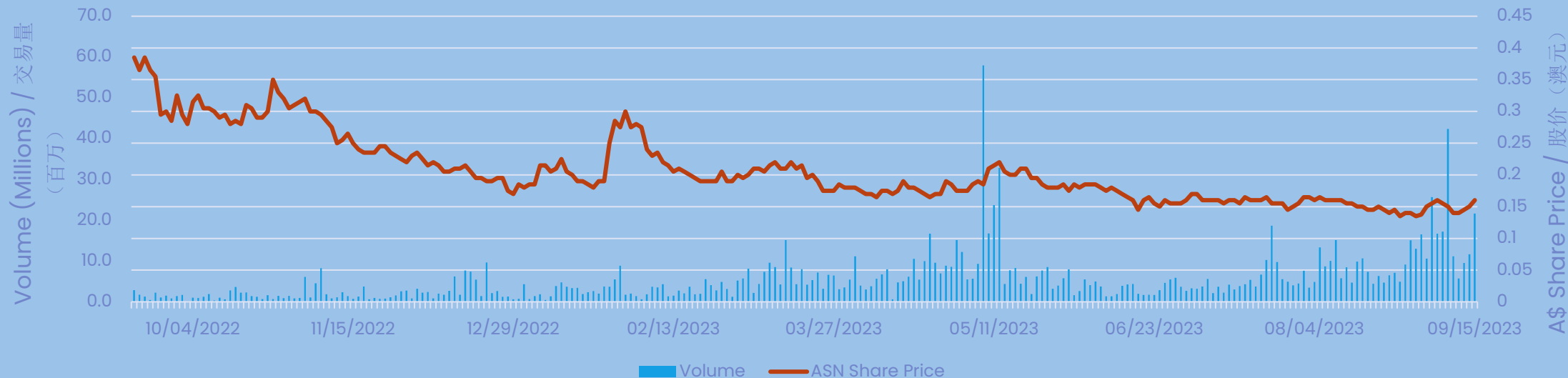
### Engineering Design and Procurement (EPC) / 工程设计及采购

- Leading global manufacturers of resins for separation in metals, lifesciences, water, and food. / 全球领先的金属、生命科学、水和食品行业分离用树脂制造商
- Listed in 2001 market cap of US\$4.5 billion. / 2001年上市, 市值45亿美元
- Produces 50,000 cubic metres of resin a year / 一年生产5万立方米树脂
- Significant client base in United States like Eli Lilly / 在美国有庞大的客户群体, 包括礼来公司



# CORPORATE SNAPSHOT / 公司概况

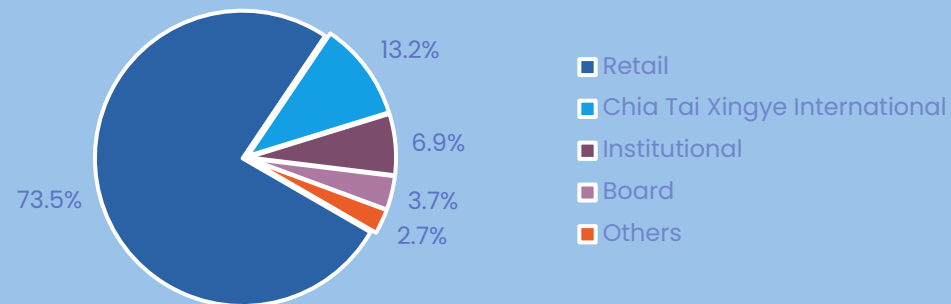
## SHARE PERFORMANCE (12mo) / 股价表现 (12个月)



## OVERVIEW / 概述

ASX code / 澳交所交易代码	ASN
Issued Shares / 发行股票	1,270 million / 12.7亿
Share Price (15 September 2023) / 股价 (2023年9月15日)	A\$0.16
Market Capitalization / 市值	A\$190 million / 1.9亿澳元
Cash (30 June 2023) / 现金 (2023年6月30日)	A\$38.6 million / 3860万澳元

## TOP SHAREHOLDERS (September 2023) / 大股东 (2023年9月)



# EXPERIENCED BOARD & EXECUTIVE TEAM / 经验丰富的董事和管理层



## BOARD / 董事

### Bruce Richardson,

B.A (Hons) Executive Chairman and CEO / 荣誉文学学士、执行董事兼首席执行官



Proven track record of 15 years in exploration, mining and production in public and private companies. Over 30 years of international business experience. Raised over \$220 million of investment for mining projects. / 在上市和私营公司从事勘探、采矿和生产工作 15 年的经验。30 多年的国际商务经验。为矿产项目筹集了超过 \$2.2 亿的投资。

### Peter (Greg) Knox,

B.Sc. (Geology) Executive Director / 理学（地质学）学士学位，执行董事



Qualified geologist with over 30 years of experience in exploration, mine development and mining operations. Has worked on projects from grass roots exploration through to mine development and production. / 拥有 30 多年勘探、矿山开发和采矿运营经验的合资格地质学家。曾参与从草根勘探到矿山开发和生产不同阶段的多个项目。

### Michael van Uffelen,

B.Com, CA / 商学士，注册会计师  
Non-Executive Director / 非执行董事



Experienced Director, CFO and company secretary. Chartered Accountant with over 30 years experience gained from working with major accounting firms, investment banks and public. / 经验丰富的董事、首席财务官和公司秘书。注册会计师，拥有 30 多年在大型会计师事务所、投资银行和上市公司工作的经验。

## GOVERNMENT RELATIONS / 政府关系

### Gabe Pellathy

Government Relations Consultant - Federal / 联邦政府关系顾问



Gabe held senior positions in three global fortune 500 corporations, the US Trade Representative in the White House and the US Department of Commerce. He has long-standing Congressional relationships and legislative expertise in developing winning strategies. / Gabe 曾在三家全球 500 强企业、美国白宫贸易代表和美国商务部担任高级职务。他在制定制胜战略方面拥有长期的国会关系和立法专长。

## SENIOR EXECUTIVES / 高管

### Flemming B. Bjoernslev

Executive Director / 执行董事  
- A1 Lithium Commercial



Experienced international chemicals with over 30 years of industry experience. Flemming served as President & CEO of Lanxess Corporation in the US, with 15 sites with 1,700 employees, and \$2B in turnover. / 经验丰富的国际化工专家，拥有 30 多年的行业经验。Flemming 曾担任朗盛公司在美国的总裁兼首席执行官，该公司拥有 15 个生产基地，1700 名员工，营业额达 \$20 亿。

### Tim Murray

COO / 首席运营官



Experienced financial analyst and senior manager. Tim founded a USA financial service company focusing on commodities with a focus on lithium brine projects. Fluent in Chinese, he is an experienced negotiator of commercial contracts with Chinese partners. / 经验丰富的金融分析师和高级经理。Tim 在美国创办了一家金融服务公司，专注于大宗商品，重点关注卤水锂项目。他精通中文，在与中国合作伙伴进行商业合同谈判方面经验丰富。

### Matthew Beattie

CFO / 首席财务官



A chartered accountant with over 10 years of industry experience. Held senior positions at a number of private equity funds as well Rio Tinto where he focused on the delivery of international exploration projects. / 他是一名注册会计师，拥有 10 多年的行业经验。曾在多家私募股权基金和力拓集团担任高级职位，主要负责国际勘探项目的交付。

### Nicholas Ong

Company Secretary / 公司秘书



Spent seven years as a Principal Advisor at the ASX overseeing the listings of over a hundred companies. He has since worked as a company secretary and director to listed companies. / 在澳大利亚证券交易所（ASX）担任首席顾问长达七年，负责监督一百多家公司的上市工作。此后，他担任过上市公司的公司秘书和董事。

# PARADOX LITHIUM PROJECT: PHASE 1 DFS HIGHLIGHTS / PARADOX 锂项目：一期最终可行性研究亮点

**Production / 产量**  
13,074 tpa (Y1-10) / 每年13074吨 (第1年-第10年)

**Life**  
23 years / 矿山寿命23年

**Total Revenue**  
US\$ 5,080 m / 总收入50.8亿美元

**IRR / 内部收益率**  
47%

**CAPEX / 资本开支**  
US\$ 495 m / 4.95亿美元

**Annual EBITDA<sup>2</sup>**  
US\$ 153 m / 年度EBITDA, 1.53亿美元

**NPV<sub>7</sub> pre-tax**  
US\$ 1,305 m / 税前净现值<sub>7</sub>, 13.05亿美元

**C1 OPEX<sup>1</sup>**  
US\$ 4,368 / t LCE / C1运营开支, 每吨碳酸锂当量4368美元

**Payback Period<sup>3</sup>**  
2 year / 资本回收期, 2年

## Additional Upside Value / 更多上行潜力

- Revenue from valuable by-products (Boron) has not been included in the economic analysis / 来自高价值副产品（硼）的收入尚未包含在经济分析中
- **DFS excludes subsequent JORC Resource Update from Cane Creek / 最终可行性研究不包括后来Cane Creek的JORC资源量更新**
- **Future Phase 2 expansion to target substantial expansion in production of lithium carbonate and bromine production / 未来二期扩张的目标是大幅提高碳酸锂产量和溴的产量**

Note – the DFS assumed a Lithium Carbonate price of \$19,800 USD p/t. / 注 – 最终可行性研究假设碳酸锂价格为每吨18.8万美元

1 – C1 Opex for production during years 1-10 at rate of 13,074tpa. / 第1年至第10年生产的C1运营开支是按照每年13074吨计算的

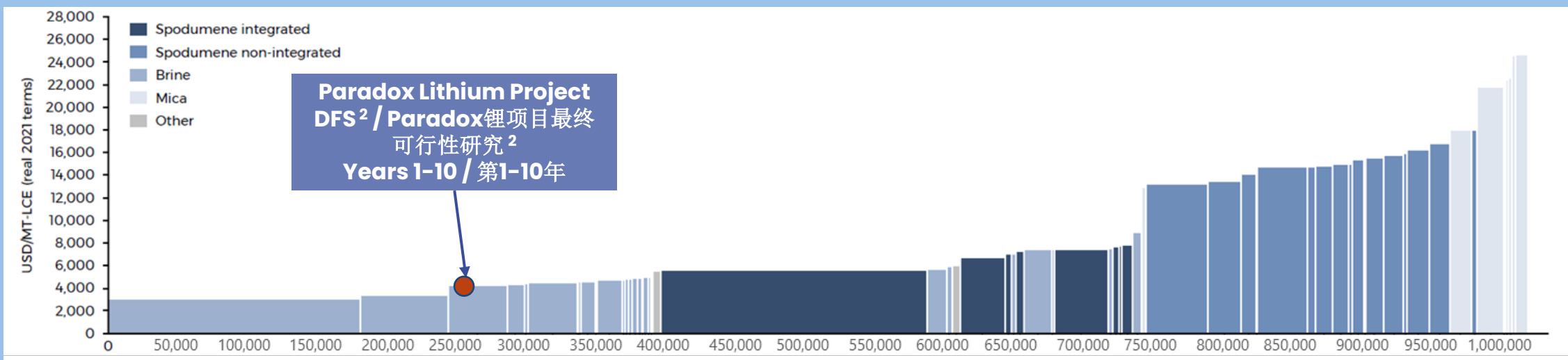
2 – Average Annual EBITDA during operations. / 运营期间平均每年EBITDA

3 – Payback period post commissioning. / 试运行后资本回收期

# OPERATING AT LOW-END OF COST CURVE

## 运营成本在成本曲线的低端

### Global Lithium Carbonate Equivalent CI Cost Curve (2025)<sup>1,2</sup> / 全球碳酸锂当量CI成本曲线(2025)<sup>1,2</sup>



1 – Source: Benchmark Minerals Intelligence (Q2 2022) Lithium Quarterly report. / 来源: Benchmark Minerals Intelligence (2022年第二季度) 锂季度报告

2 – Paradox Lithium Project DFS production cost position on the global lithium carbonate cost curve is based on Anson’s DFS assumption for production years 1-10 only and does not reflect Benchmark Minerals Intelligence’s views. / Paradox 锂项目的最终可行性研究生产成本在全球碳酸锂成本曲线上的位置是基于 Anson 最终可行性研究中对第 1-10 年生产的假设, 并不反映 Benchmark Minerals Intelligence 的观点

3 – Production Costs before royalties and corporate overheads. / 扣除权利金和企业日常开支前的生产成本

# OPERATING COST ESTIMATE

## 运营成本预期值

- Operating cost estimates include brine extraction, processing and production of battery grade lithium carbonate. /运营成本估算包括盐水提取、加工和电池级碳酸锂的生产。
- All direct costs such as Transport, labour, maintenance and raw material included in estimates. /所有直接费用，如运输、劳务、维修和原材料费用，均包括在预期值中。
- CI Costs of US\$4,368 per tonne of battery grade lithium carbonate. / 每吨电池级碳酸锂的CI成本为4368美元**

1 - Assumes no by-product credits. / 假设没有副产品带来的价值

2 - Production Costs before royalties and corporate overheads. / 扣除权利金和企业日常开支前的生产成本

Lithium Carbonate Production / 碳酸锂生产	Year 1-10 Production (13ktpa) / 第1-10年的产量（每年1.3万吨）
Item / 分项	US\$ per tonne LCE / 每吨碳酸锂当量的美元金额
Raw materials / 原材料	1,188
Freight on raw materials / 原材料运输费	95
Electricity / 电力	589
Gas / 天然气	460
Gas trucking / 天然气运输	37
Maintenance / 维护	265
Labour / 劳动力	518
Well disposal fee / 钻井处理费	1,197
Solid waste disposal Costs / 固废处理费	6
Purchase of water / 购买水	10
Overheads - SULA lease / 日常开支 - SULA租赁费	4
<b>Total / 总计</b>	<b>4,368</b>
By-products credit <sup>1</sup> / 副产品价值 <sup>1</sup>	-
<b>Annual Production Costs / 年度生产成本<sup>2</sup></b>	<b>4,368</b>

# CAPITAL COST ESTIMATE

## 资本成本预期值

- The capital cost estimate includes direct, indirect costs, freight, professional services, taxes and contingency. / 资本成本预期值包括直接成本、间接成本、运费、专业服务费、税费和应急费用。
- The DLE plant will be supplied and commissioned by Sunresin, Anson's technology partner.<sup>1</sup> / DLE工厂将由 Anson 的技术合作伙伴蓝晓供应和调试<sup>1</sup>
- Worley group have estimated the capital costs for all above ground facilities. / 沃利集团估算了所有地上设施的资本成本。
- Capital cost estimate accurate to within +25%/-15%. / 资本成本预估值范围为+25%/-15%。
- The new production site and updated project layout has resulted in significant capex savings over PEA by reducing pipeline required from ~40kms to ~5km. / 新的生产基地和更新的项目布局将所需的管道长度从约 40 千米减少到约 5 千米，从而比初步经济评估节省了大量资本支出

Capital Item / 资本项目	US\$m / 百万美元
Direct Capital Costs / 直接资本成本	275.2
Indirect Capital Costs / 间接资本成本	126.0
Other Costs / 其他成本	17.8
Production and Disposal Wells / 生产和处理井	22.0
<b>Project Capex / 项目资本开支</b>	<b>441.0</b>
Owners Costs / 拥有者成本	31.3
Contingency / 应急费用	22.8
<b>Total Capital Costs / 总资本成本</b>	<b>495.1</b>

1 – ASX Announcement 25 August 2022. / 澳交所2022年8月25日声明

# ANSON'S FUNDING STRATEGY / ANSON的融资策略





# GREEN RIVER PROJECT / GREEN RIVER项目



In 2023, Anson staked a second lithium project in Paradox Basin, The Green River Lithium Project. / 2023年 Anson在Paradox盆地标桩了第二个锂项目 - Green River锂项目

- The Green River Project is located 50 kms northwest of Paradox Lithium Project, consisting of 1,251 placer claims, an area of 10,620 hectares (106.2 km<sup>2</sup>). / Green River项目位于Paradox锂矿项目西北 50 公里处，由 1,251 个砂矿矿权区组成，面积 10,620 公顷（106.2 平方公里）。
- Historical drilling confirms similar geology, and features to the Paradox Lithium Project area including porosity, pressure, depth, and structures. / 历史钻探确认了与Paradox锂项目类似的地质状况和特征，包括孔隙度、压力、深度和结构
- Previous drilling has identified brine in Clastic 31 and the Mississippian Units that contain supersaturated brine<sup>1</sup>. / 之前的钻探已经确认了在Clastic 31 和包含超饱和卤水的Mississippian Units存在卤水
- Exploration Target of 1.06Mt – 2.07Mt Lithium Carbonate defined<sup>1</sup>. / 确定了106万吨-207万吨碳酸锂的勘探靶区<sup>1</sup>



1 - ASX announcement 15 February 2023 The Exploration Target figure is conceptual in nature as there has been insufficient exploration undertaken on the project to define a mineral resource. It is uncertain that future exploration will result in a mineral resource. / 澳大利亚证券交易所2023年2月15日公告。勘探靶区的数字是概念性的，因为在该项目上进行的勘探不足以确定矿产资源量。未来的勘探是否会确定矿产资源量尚不确定。

# GREEN RIVER: DERISKED INFRASTRUCTURE / 降低风险的基础设施

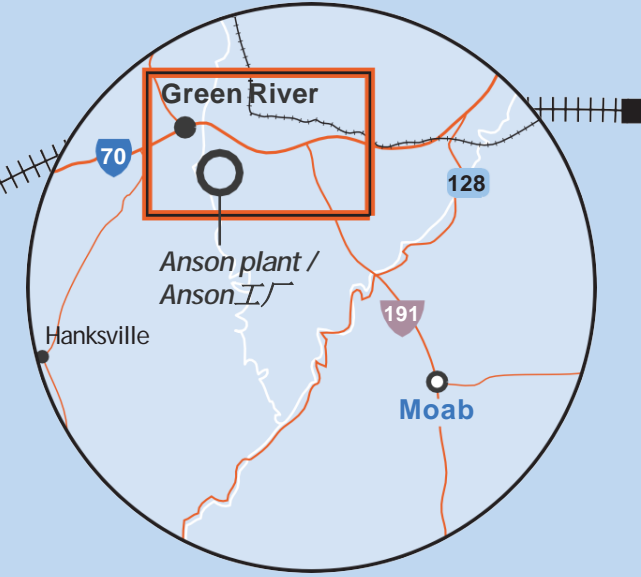


## Proximity to township / 临近城镇

Located in Green River **3 km from the town center**, with access to town water and sewerage, and a community where employees may live / 位于Green River, 距离镇中心3千米, 能够使用城镇的水和排水系统, 员工可以住在社区

## Expedited permitting / 加快许可

The property is a brownfield site due to the former uranium processing facility on adjacent land.  
**Brownfield sites can receive expedited permitting for mining and processing lithium** / 由于毗邻的土地上以前有铀加工设施, 因此该项目区属于棕地矿区。棕地矿区可以加快获得开采和加工锂的许可。



## Water / 水

Anson has water rights from Green River that runs along the boundary **250 M from plant** / Anson拥有Green River的水权, 该河沿边界流经距离工厂250米的地方。

## Rail / 铁路

Rail line runs along the boundary **750 M from the plant**, potential to restore siding on the property / 铁路线沿边界延伸, 距工厂750米, 有可能恢复项目区内的侧线

750 M

250 M

Anson plant / Anson工厂

## Points of extraction / 提取点

Main street

## Power / 电力

Power lines travel over the property. / 电线从项目区穿过

## Gas / 天然气

Major natural gas pipeline **2km from plant** / 大型天然气管道距离工厂2千米

## Road / 道路

Interstate I70 run along boundary **100 M from the plant** / I70州级公路沿边界延伸, 最近距离工厂100米


## Mineral Rights / 矿产权

Anson owns mineral rights to lithium on private property and **can extract and dispose 500 to 750 m from the plant** / Anson 拥有私人土地上的锂矿产权, 可在距离工厂500至750米处开采和处理

0,5km



**THANK YOU / 谢谢**

 +61 7 3132 7990

 [info@ansonresources.com](mailto:info@ansonresources.com)

 [www.ansonresources.com](http://www.ansonresources.com)

 Suite 3, Level 3 10 Eagle Street, Brisbane, QLD 4000

# APPENDIX – PEER TABLE REFERENCES

## 附录 – 同行业公司参考资料



Company	Production Target (LCE)	Source
Livent	50ktpa	<a href="https://s22.q4cdn.com/453302215/files/doc_presentations/2023/02/Livent-BMO-Investor-Presentation.pdf">https://s22.q4cdn.com/453302215/files/doc_presentations/2023/02/Livent-BMO-Investor-Presentation.pdf</a>
Lanke	30ktpa	<a href="http://www.21jingji.com/article/20220627/herald/36dac8c51d4fc515aeb8e4bf0e796eaa.html#:~:text=%E5%8E%BB%E5%B9%B48%E6%9C%88%EF%BC%8C%E8%93%9D%E7%A7%91,2.27%E4%B8%87%E5%90%A8%E7%9A%84%E4%BA%A7%E9%87%8F%E3%80%82">http://www.21jingji.com/article/20220627/herald/36dac8c51d4fc515aeb8e4bf0e796eaa.html#:~:text=%E5%8E%BB%E5%B9%B48%E6%9C%88%EF%BC%8C%E8%93%9D%E7%A7%91,2.27%E4%B8%87%E5%90%A8%E7%9A%84%E4%BA%A7%E9%87%8F%E3%80%82</a> <a href="https://www.jadecove.com/research/fromcatamarcatoqinghai">https://www.jadecove.com/research/fromcatamarcatoqinghai</a> <a href="https://www.stcn.com/article/detail/770829.html">https://www.stcn.com/article/detail/770829.html</a>
Minmetals	5ktpa	<a href="https://www.seplite.com/sunresin-minmetal-s-lithium-carbonate-project-passes-project-acceptance.html">https://www.seplite.com/sunresin-minmetal-s-lithium-carbonate-project-passes-project-acceptance.html</a>
Zangge Lithium	10ktpa	<a href="https://www.zgmining.com/business_14/">https://www.zgmining.com/business_14/</a>
Jintai Lithium	7ktpa	<a href="https://www.seplite.com/sunresin-s-4000t-a-jintai-salt-lake-lithium-extraction-project-put-into-operation.html">https://www.seplite.com/sunresin-s-4000t-a-jintai-salt-lake-lithium-extraction-project-put-into-operation.html</a>
Tibet National (Tibet Guoneng)	8.8ktpa	<a href="https://www.seplite.com/sunresin-s-lithium-extraction-technology-opens-a-new-chapter-in-southwest-china.html">https://www.seplite.com/sunresin-s-lithium-extraction-technology-opens-a-new-chapter-in-southwest-china.html</a>
EVE Energy	10ktpa	<a href="https://www.seplite.com/sunresin-en-route-to-signing-a-new-epc-project-in-direct-lithium-extraction-from-salt-brine-in-qinghai.html">https://www.seplite.com/sunresin-en-route-to-signing-a-new-epc-project-in-direct-lithium-extraction-from-salt-brine-in-qinghai.html</a> ; <a href="https://www.yicai.com/news/sunresin-climbs-after-setting-out-new-plan-to-develop-lithium-salt-lake-in-eastern-china">https://www.yicai.com/news/sunresin-climbs-after-setting-out-new-plan-to-develop-lithium-salt-lake-in-eastern-china</a>
Eramet	24ktpa	<a href="https://www.eramet.com/wp-content/uploads/2023/09/2023-09-12-Eramet-Investor-presentation-Roadshow-North-America-Sept.-2023.pdf">https://www.eramet.com/wp-content/uploads/2023/09/2023-09-12-Eramet-Investor-presentation-Roadshow-North-America-Sept.-2023.pdf</a>
Standard Lithium	5.5ktpa	<a href="https://www.standardlithium.com/investors/news-events/press-releases/detail/150/standard-lithium-announces-positive-results-of-definitive#:~:text=The%20Company%20has%20completed%20a,deliver%20commercial%20production%20in%202026">https://www.standardlithium.com/investors/news-events/press-releases/detail/150/standard-lithium-announces-positive-results-of-definitive#:~:text=The%20Company%20has%20completed%20a,deliver%20commercial%20production%20in%202026</a> .
	(Full Phase 1)	
Vulcan	21.12ktpa	<a href="https://newswire.iguana2.com/af5f4d73c1a54a33/vul.aspx/6A1135972/VUL_Phase_One_DFS_Presentation_2023">https://newswire.iguana2.com/af5f4d73c1a54a33/vul.aspx/6A1135972/VUL_Phase_One_DFS_Presentation_2023</a>
	(24ktpa LiOH)	
Rio Tinto	3ktpa	<a href="https://tools.eurolandir.com/tools/Pressreleases/GetPressRelease/?ID=4357258&amp;lang=en-GB&amp;companycode=uk-rio&amp;v=rns2023">https://tools.eurolandir.com/tools/Pressreleases/GetPressRelease/?ID=4357258&amp;lang=en-GB&amp;companycode=uk-rio&amp;v=rns2023</a>
Controlled Thermal	25ktpa	<a href="https://www.cthermal.com/projects">https://www.cthermal.com/projects</a> <a href="https://www.reuters.com/business/autos-transportation/stellantis-invests-more-than-100-million-california-lithium-project-2023-08-17/">https://www.reuters.com/business/autos-transportation/stellantis-invests-more-than-100-million-california-lithium-project-2023-08-17/</a>
Lake Resources	12.5ktpa	<a href="https://newswire.iguana2.com/af5f4d73c1a54a33/lke.aspx/2A1429372/LKE_LKE_Bell_Potter_Unearthed_Conference_070223">https://newswire.iguana2.com/af5f4d73c1a54a33/lke.aspx/2A1429372/LKE_LKE_Bell_Potter_Unearthed_Conference_070223</a> <a href="https://lakeresources.com.au/wp-content/uploads/2023/06/lke_investor-update_19-jun-23.pdf">https://lakeresources.com.au/wp-content/uploads/2023/06/lke_investor-update_19-jun-23.pdf</a>
	(PFS)	
Compass Minerals	11ktpa	<a href="https://s22.q4cdn.com/834578860/files/doc_presentations/2022/12/DB-Lithium-Battery-Supply-Chain-Conf-v4-(12.02.22).pdf">https://s22.q4cdn.com/834578860/files/doc_presentations/2022/12/DB-Lithium-Battery-Supply-Chain-Conf-v4-(12.02.22).pdf</a> <a href="https://www.compassminerals.com/wp-content/uploads/2023/06/2023.06.20-Fastmarkets.pdf?x30520">https://www.compassminerals.com/wp-content/uploads/2023/06/2023.06.20-Fastmarkets.pdf?x30520</a>
	(Phase 1)	

# COMPETENT PERSON'S STATEMENT

## 合资格人士声明

**Competent Person's Statement 1:** The information in this presentation that relates to exploration results, exploration targets and geology is based on information compiled and/or reviewed by Mr Greg Knox, a member in good standing of the Australasian Institute of Mining and Metallurgy. Mr Knox is a geologist who has sufficient experience which is relevant to the style of mineralisation under consideration and to the activity being undertaken to qualify as a "Competent Person", as defined in the 2012 Edition of the Australasian Code for Reporting of Exploration Results, Exploration Targets, Mineral Resources and Ore Reserves and consents to the inclusion in this report of the matters based on information in the form and context in which they appear. Mr Knox is a director of Anson and a consultant to Anson.

**Competent Person's Statement 2:** The information contained in this presentation relating to Exploration Results and Mineral Resource Estimates has been prepared by Mr Richard Maddocks, MSc in Mineral Economics, BSc in Geology and Grad Dip in Applied Finance. Mr Maddocks is a Fellow of the Australasian Institute of Mining and Metallurgy with over 30 years of experience. Mr Maddocks has sufficient experience that is relevant to the style of mineralisation and type of deposit under consideration and to the activity being undertaken to qualify as a competent person as defined in the 2012 edition of the Australasian Code for Reporting of Exploration Results, Mineral Resources and Ore Reserves.

Mr Maddocks is an independent consultant to Anson Resources Ltd. Mr Maddocks consents to the inclusion in this presentation of this information in the form and context in which it appears. The information in this announcement is an accurate representation of the available data from exploration at the Paradox Lithium Project.

Information is extracted from reports entitled 'Anson Further De-risks Paradox Brine Project' created 11 May 2020, 'Anson Granted Additional Paradox Brine Project Claims' created 30 March 2021, 'Anson Significantly Increases Paradox Exploration Area' created 6 April 2021 'Paradox Brine Stage 1 Sodium Bromide/Lithium Updated PEA' created 1 September 2021, 'Test on Historic Diamond Core to Fast Track Resource Upgrade' created 6 July 2022, 'Mississippian Unit at LC2 delivers 25% Increase in Lithium' created 11 July 2022, 'Further 87% Increase in Li Grades of Mississippian Units' created 27 July 2022, 'Further Increase in Lithium Grades at Paradox Project' created 4 August 2022, 'Anson Reports Major Resource Upgrade at Paradox' created 22 August 2022, 'Paradox Lithium Project DFS Confirms Outstanding Economics' created 8 September 2022, 'Anson Delivers 1Mt LCE Mineral Resource at Paradox Lithium Project' created 2 November 2022, 'Western Strategy Resource Expansion Drilling to Commence' created 25 January 2023, and 'Exploration Target Confirmed at Green River Lithium Project' created 15 February 2023, all are available to view on the ASX website under the ticker code ASN.

The Group confirms that it is not aware of any new information or data that materially affects the information included in the original market announcement and, in the case of estimates of Mineral Resources or Ore Reserves, that all material assumptions and technical parameters underpinning the estimates in the relevant market announcement continue to apply and have not materially changed. The Group confirms that the form and context in which the Competent Person's findings are presented have not been materially modified from the original market announcement.