





## Disclaimer / 免责声明

This presentation contains certain forward-looking statements that reflect the current views and/or expectations of Graphano Energy Limited ("Graphano" or the "Company") with respect to its performance, business and future events, including statements regarding the Company's beliefs regarding future exploration of its projects, future drilling locations and its plans and budgets, exploration and permitting timelines, future acquisition opportunities and exploration plans.

Forward-looking statements are based on the then-current expectations, beliefs, assumptions, estimates and forecasts about the business and the markets in which the Company operates, including that: the current price of and demand for minerals being targeted by the Company will be sustained or will improve; the Company's current exploration programs and objectives can be achieved; the Company will not experience any material accident, labour dispute or equipment failure; financing will be available if and when needed on reasonable terms; and the Company will be able to identify and acquire additional mineral interests on reasonable terms or at all. Investors are cautioned that all forward-looking statements involve risks and uncertainties, including: that the Company has a limited operating history; that resource exploration and development is a speculative business; that the Company may lose or abandon its property interests; that the Company's properties are in the exploration stage and without known bodies of commercial ore; that the Company may not be able to obtain all necessary permits and approvals on any of its properties; that environmental laws and regulations may become more onerous; that the Company may not be able to raise additional funds when necessary; potential defects in title to the Company's properties; fluctuations in currency exchange rates; changes in tax or royalty rates; operating hazards and risks; potential inability to find suitable acquisition opportunities and/or complete the same and other factors listed in the Company's public filings, including its Management's Discussion and Analysis, a copy of which is available under Graphano's profile at [www.sedar.com](http://www.sedar.com).

Although Graphano has attempted to identify important factors that could cause actual actions, events or results to differ materially from those described in forward-looking information, there may be other factors that cause, actions, events or results not to be as anticipated, estimated or intended. There can be no assurance that forward-looking information, or the material factors or assumptions used to develop such forward looking information, will prove to be accurate. Readers are cautioned not to place undue reliance on forward-looking information due to the inherent uncertainty thereof. The Company does not undertake any obligations to release publicly any revisions for updating any voluntary forward-looking statements, except as required by applicable securities law.



# The Value Proposition / 价值定位

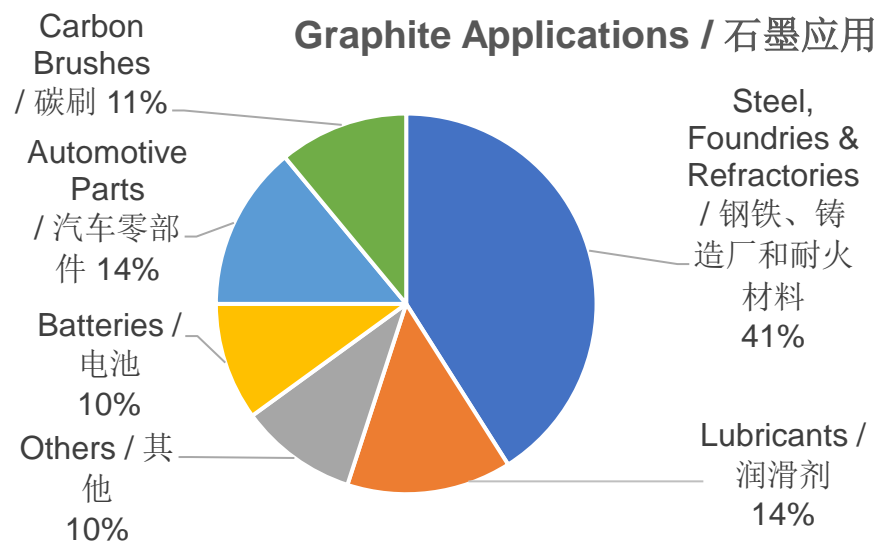
- **Great Infrastructure** – the Lac Aux Bouleaux (LAB) deposit is adjacent to the only graphite mine in Canada and the United States and has readily available power and transport infrastructure. / 基础设施良好 - Lac Aux Bouleaux (LAB)矿床临近加拿大和美国唯一的石墨矿，方便获得电力和交通基础设施。
- **Focus on near term production** – Given the positive historical results on the flake sizes and purity of LAB's graphite and the available infrastructure, the project could be fast-tracked to production. / 重点工作是近期投产 – 由于LAB的石墨片尺寸和纯度都获得了积极的历史结果，基础设施良好，该项目可以快速投产
- **Great Upside** – As a new listed company with fast growth potential, Graphano offers high stock upside potential to investors. / 潜力巨大 – 作为一家有快速增长潜力的新上市公司，Graphano的股票有为投资者带来高收益的潜力





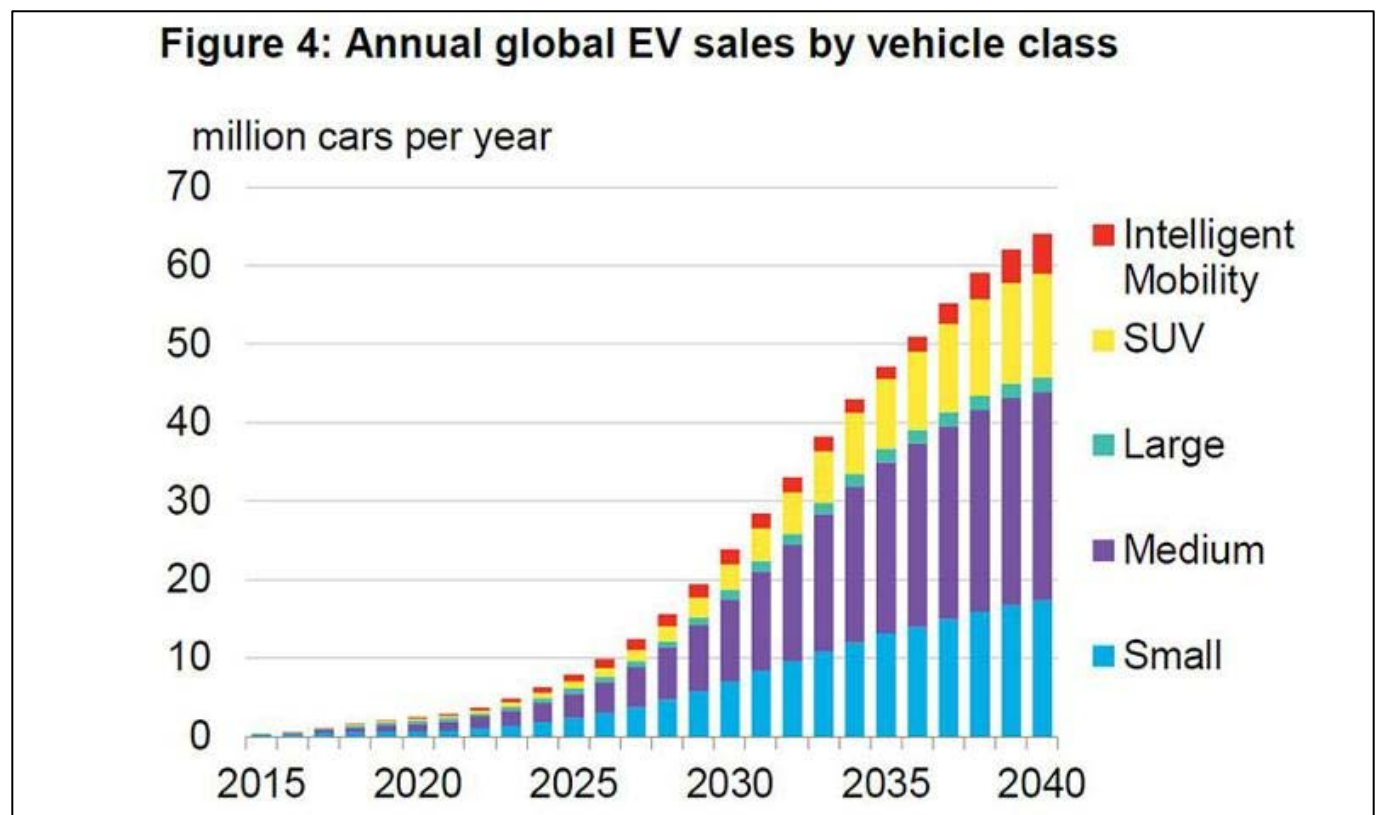
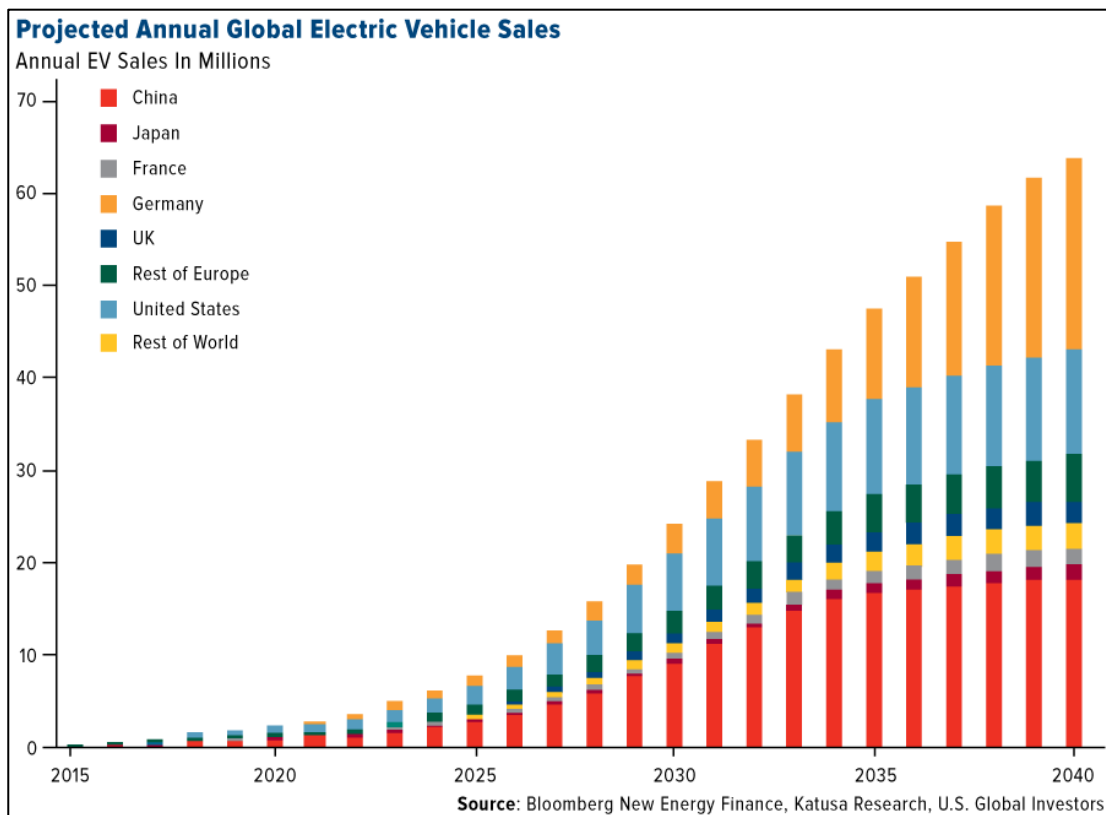
# About Graphite / 石墨介绍

- High melting point material essential to the refractory industry. / 高熔点材料，对耐火材料行业至关重要
- Good conductor of electricity used as an anode material, e.g., batteries. / 良好的电导体，用作阳极材料，如电池。
- Soft and slippery material used in pencils and as a dry lubricant. / 软滑的材料，用作铅笔和干润滑剂
- China accounted for **65%** of natural graphite production in 2022. / 中国占2022年天然石墨产量的**65%**



# There is No Turning Back: EVs are Here to Stay / 没有回头路：电动汽车的时代已经到来

The EV Revolution is Driving Dramatic Demand for Electric Minerals / 电动汽车革命推动了对电池矿产的巨大需求  
As Graphite is the Main Anode Material for EV Batteries, Demand is Expected to Increase Significantly /  
由于石墨是电动汽车电池的主要阳极材料，预计需求量将大幅增加





# Graphite Demand for Evs / 电动汽车的石墨需求

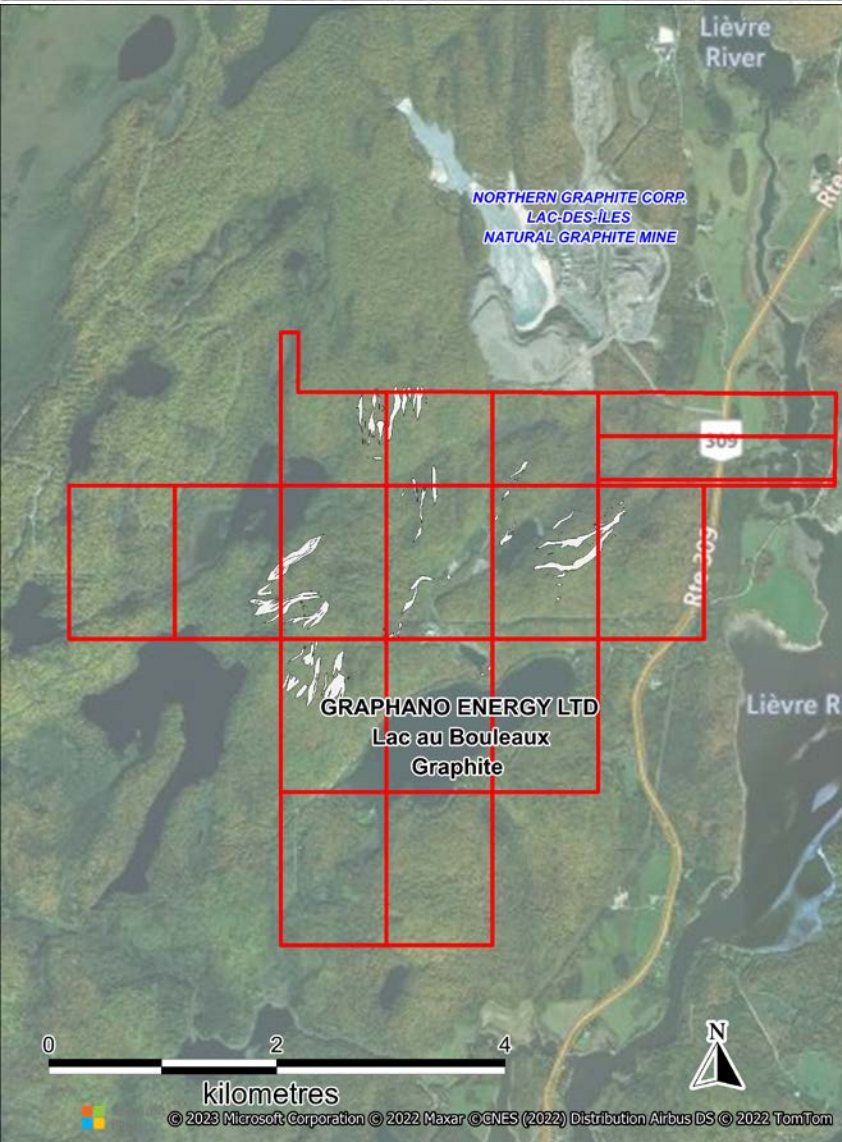
- Total current production of natural graphite is 1.3 million tonnes<sup>(1)</sup> / 目前天然石墨的总产量为 130 万吨<sup>(1)</sup>
- As internal combustion engines vehicles are phased out, graphite demand for EV batteries alone could increase to 5 million tonnes, opening the opportunity for dozens of new graphite mines to open in the next 5 to 10 years. / 随着内燃机汽车的逐步淘汰，仅电动汽车电池对石墨的需求量就可能增加到 500 万吨，这为在未来 5 到 10 年内开发数十个新石墨矿提供了机会。

Number of Gigafactories needed worldwide (for cars)					Graphite Demand ~5 million <sup>(2)</sup> tonnes per year / 石墨需求约为每年500万吨 <sup>(2)</sup> .
Gigafactory output	Car battery size	Factory car output	Number of vehicles needed	Number of Gigafactories	
20 GWh/yr	70 kWh	286,000	71 Million	249	
35 GWh/yr	70 kWh	500,000	71 Million	142	
105 GWh/yr	70 kWh	1.5 Million	71 Million	48	
150 GWh/yr	70 kWh	2.1 Million	71 Million	34	

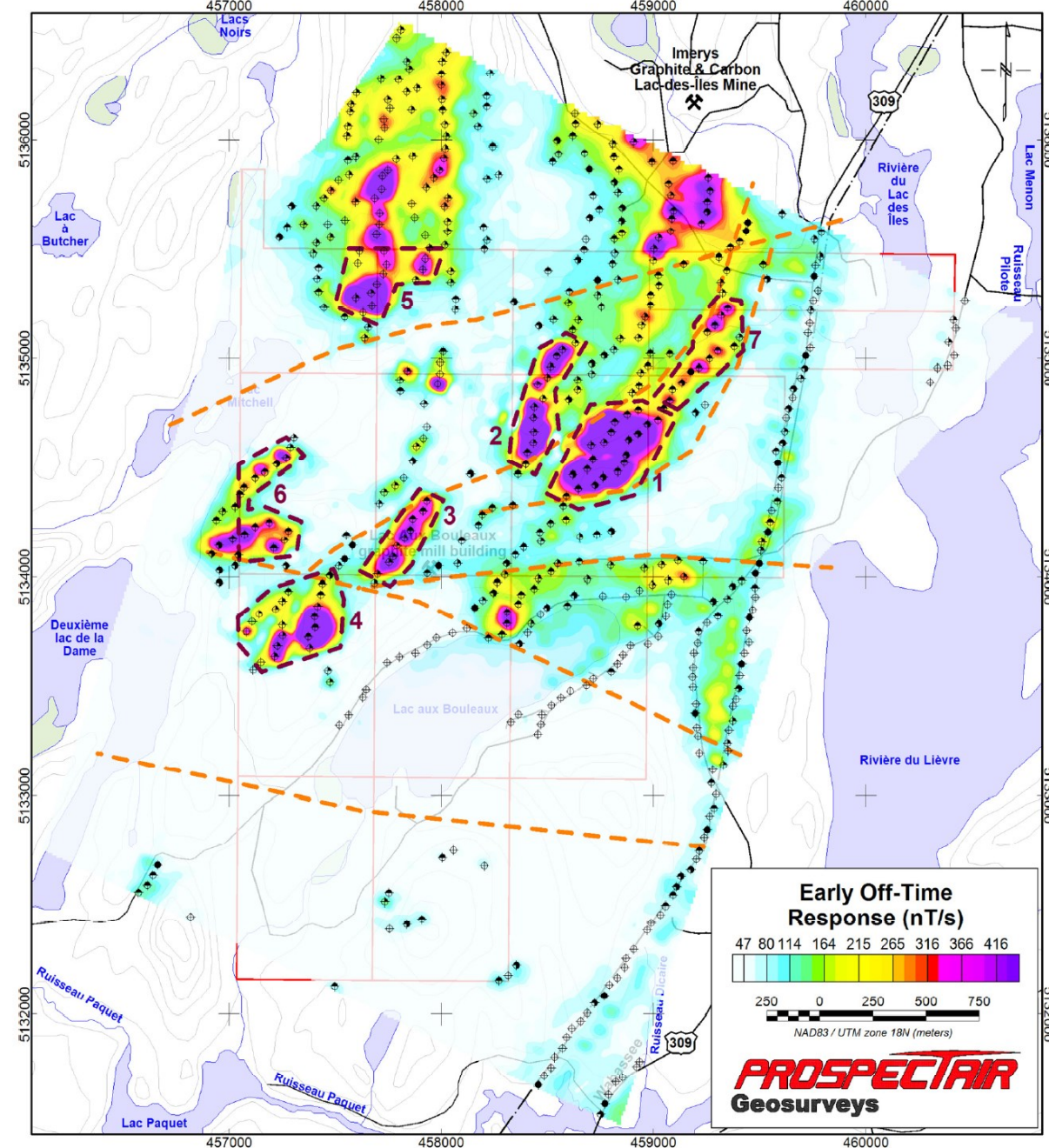
(1) USGS 2022 (2) CleanTechnica

## Lac Aux Bouleaux (LAB) Project / Lac Aux Bouleaux (LAB)项目

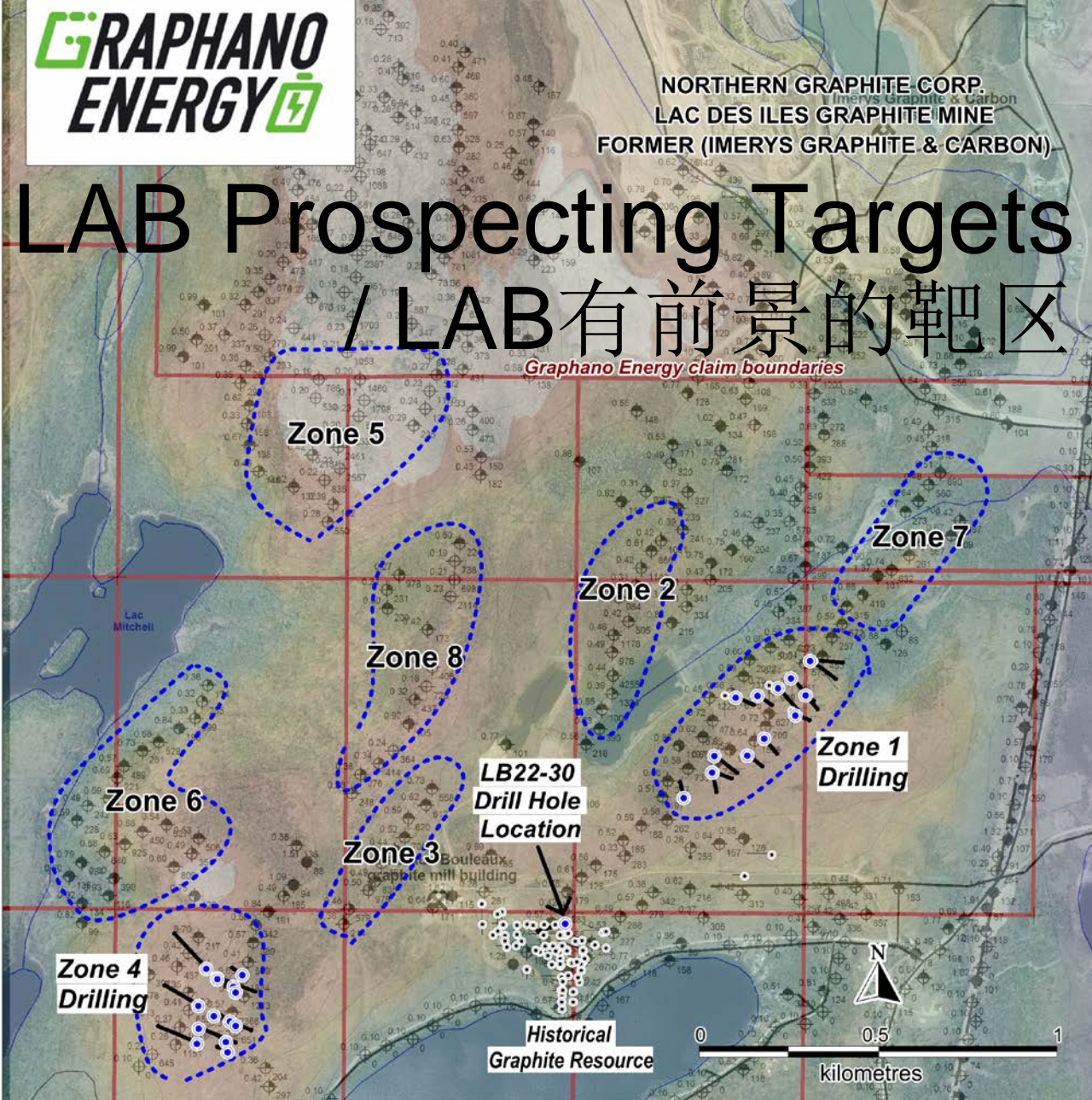
- 2022 exploration programs intersected significant graphite mineralization in drill holes and trenches, in Zones 1, 3, 4. Single test drill holes were also performed in Zone 8 and at the historical pit (that has a non-compliant resource of 1.45 Mt @ 8% Cg), with encouraging results. / 2022 年的勘探计划在 1、3、4 区的钻孔和沟槽中发现了大量石墨矿化结构。此外，还在 8 区和历史矿坑（拥有 145 万吨 @ 8% Cg 的资源量，非 NI 43-101 标准）进行了单个钻孔测试，结果令人鼓舞。
- Preliminary metallurgical results returned very good results with recoveries up to **96%**. The high percentage of large flake graphite is positive for a high quality, premium priced product. / 初步冶金测试显示了非常好的结果，回收率高达 **96%**。大片石墨的比例很高，这对生产高质量、高价位的产品具有积极作用。
- Infrastructure is excellent with road access and electrical power on site. / 基础设施良好，有道路通达，现场有电力
- The property is located contiguous to Northern Graphite Corp's Lac des Iles producing graphite mine. / 该项目区与 Northern Graphite Corp 的 Lac des Iles 在产石墨矿相邻
- Potential for near term production. / 有近期投产的潜力



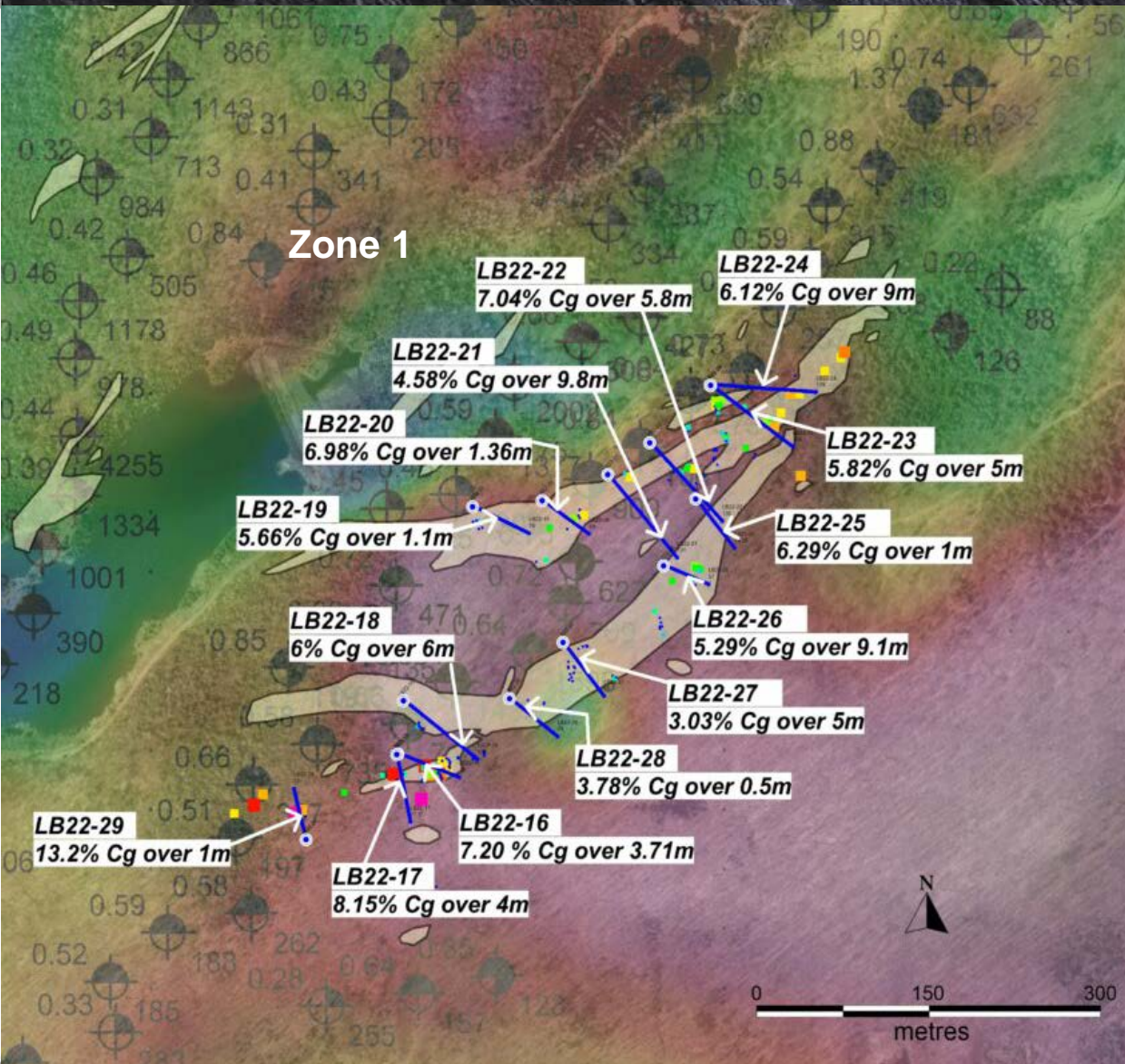




PROSPECTAIR





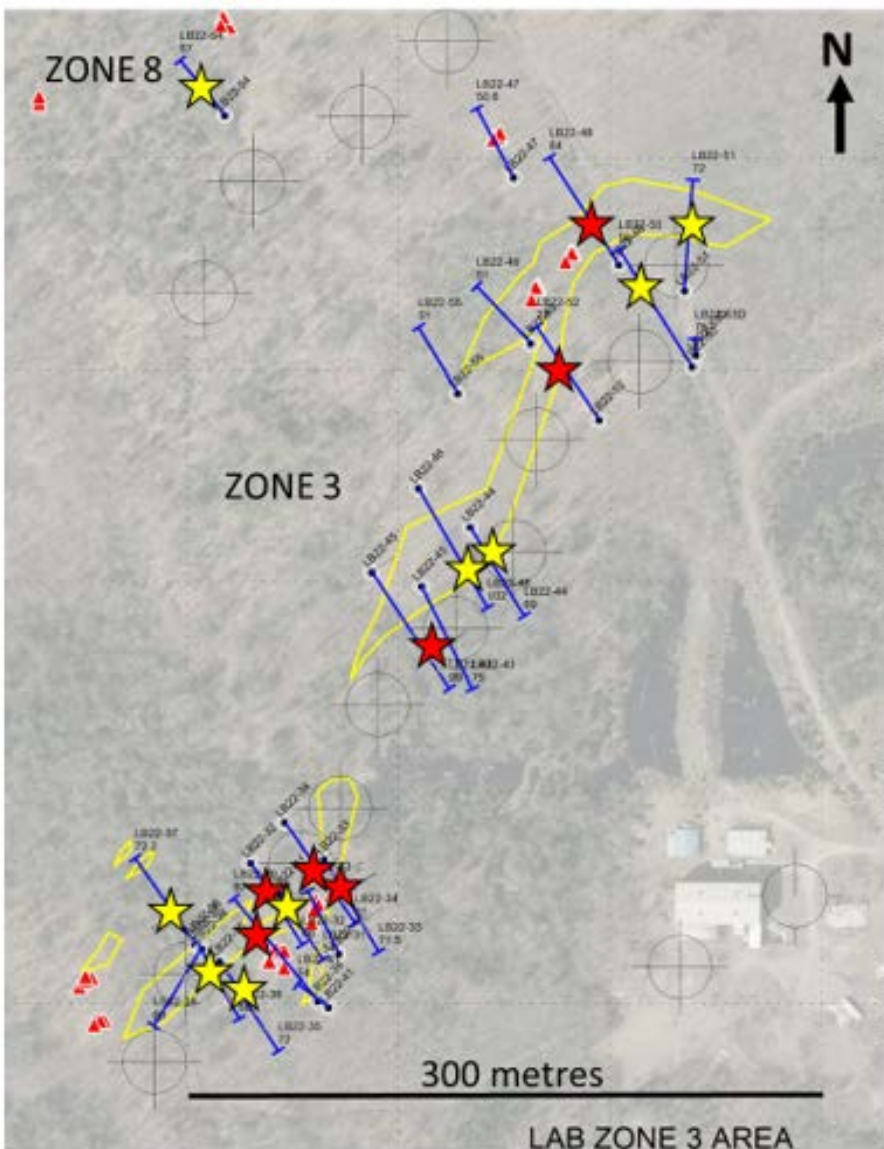


## LAB Property: Select Drilling Results / LAB项目区：精选钻探结果

### Graphano drill program 2022 (Zone 1): / Graphano 2022年钻探活动 (1区):

- Drill Hole LB22-30 intersected **6.34%** graphitic carbon (Cg) over 11m at 106m drilled depth including **9.15%** Cg over 4.0m. / 钻孔LB22-30在钻探深度106米处见石墨碳(Cg)品位**6.34%**的11米矿段，包括Cg品位**9.15%**的4.0米矿段
- Drill Hole LB22-18 intersected **6.0%** graphitic carbon (Cg) over 6m at 65m depth; / 钻孔LB22-18在钻探深度65米处见石墨碳(Cg)品位**6.0%**的6米矿段
- Drill Hole LB22-21 intersected **4.58%** Cg over 9.8m at 95.2m drilled depth. / 钻孔LB22-21在钻探深度95.2米处见石墨碳(Cg)品位**4.58%**的9.8米矿段
- Drill Hole LB22-24 intersected three zones as follows: / 钻孔LB22-24见了三个区，分别为：
  - Top zone of **6.12%** Cg over 9.0m at 43.5m; / 顶部区域：在43.5米处见Cg品位**6.12%**的9.0米矿段
  - Middle zone of **4.81%** Cg over 2.0m at 84.0m; / 中部区域：在84.0米处见Cg品位**4.81%**的2.0米矿段
  - Lower zone of **6.09%** Cg over 6.0m at 90.0m. / 下部区域：在90.0米处见Cg品位**6.09%**的6.0米矿段
- Drill Hole LB22-26 intersected minimum of **5.29%** Cg over 9.0m at 23.9m drilled depth, including **7.51%** Cg over 5.0m. / 钻孔LB22-26在钻探深度23.9米处见Cg品位最低**5.29%**的9.0米矿段，包括Cg品位**7.51%**的5.0米矿段





## LAB Property: Select Drilling Results / LAB项目区：精选钻探结果

### **Graphano drill program 2022 (Zone 3): / Graphano 2022年钻探活动（3区）：**

23 drill holes were drilled over the 500 metre length. The mineralization outlined remains open for expansion. / 23口钻孔钻探了500米深。确定的矿化结构有扩张潜力

#### **Results include: / 钻探结果包括：**

- Drill Hole LB22-33 intersected **6.26%** graphitic carbon (Cg) over 13.7 meters (m) starting at 14.0 (m) drilled depth, including **11.95%** Cg over 4.7 m at 14 m. / 钻孔LB22-33在钻探深度14.0米开始见石墨碳(Cg)品位**6.26%**的13.7米矿段，包括在钻探深度14.0米见Cg品位**11.95%**的4.7米矿段
- Drill Hole LB22-45 intersected **9.09%** Cg over 8.0 m at 68 m. / 钻孔LB22-45在68米处见Cg品位**9.09%**的8.0米矿段
- Drill Hole LB22-52 intersected **7.17%** Cg over 9.0 m at 36 m. / 钻孔LB22-52在36米处见Cg品位**7.17%**的9.0米矿段
- Drill Hole LB22-39 intersected **4.72%** Cg over 11.6 m at 36.4 m, including **6.56%** Cg over 6.6 m at 36.4m. / 钻孔LB22-39在36.4米处见Cg品位**4.72%**的11.6米矿段，包括在36.4米处见Cg品位**6.56%**的6.6米矿段
- Drill Hole LB22-34 intersected **5.82%** Cg over 9.0 m at 38.0 m, including **6.25%** Cg over 3.50 m at 38 and **7.28%** Cg over 4 m at 43 m. / 钻孔LB22-34在38米处见Cg品位**5.82%**的9.0米矿段，包括在38米处见Cg品位**6.25%**的3.5米矿段和在43米处见Cg品位**7.28%**的4米矿段
- Drill Hole LB22-32 intersected **6.28%** Cg over 8.0 m at 18.5 m. / 钻孔LB22-32在18.5米处见Cg品位**6.28%**的8.0米矿段
- Drill Hole LB22-48 intersected **9.53%** Cg over 5.0 m at 19.5 m. / 钻孔LB22-48在19.5米处见Cg品位**9.53%**的5.0米矿段

### **Graphano drill program 2022 (Zone 4): / Graphano 2022年钻探活动（4区）：**

12 drill holes were completed in Zone 4. / 在4区完成了12口钻孔

#### **Results include:/ 钻探结果包括：**

- Drill Hole LB22-09 intersected 4.50 % graphitic carbon (Cg) over 7.0 metres at 4.0 metre (m) drilled depth including 6.61% Cg over 4.0 m; / 钻孔LB22-09在钻探深度4.0米开始见石墨碳(Cg)品位4.50%的7.0米矿段，包括Cg品位6.61%的4.0米矿段
- Drill Hole LB22-10 intersected 4.13% Cg over 3.0 m at 10 m drilled depth, including 8.85% Cg over 1.0 m; / 钻孔LB22-10在钻探深度10米开始见石墨碳(Cg)品位4.13%的3.0米矿段，包括Cg品位8.85%的1.0米矿段
- Drill Hole LB22-13 intersected 7.2% Cg over 2.3 m at 28.2 m drilled depth; / 钻孔LB22-13在钻探深度28.2米开始见石墨碳(Cg)品位7.2%的2.3米矿段



## Standard Mine Project / Standard项目

### Geophysics Program / 地球物理勘测

- An airborne geophysical survey, which confirmed the presence of two graphite related anomalies extending 500 metres and 600 metres in length through the historical graphite mine surface workings, was conducted at the Standard Project in the summer of 2022. / 2022 年夏天，在Standard项目进行了一次航空地球物理勘测，确认了存在两个与石墨有关的异常区，这两个异常点区穿过历史的石墨矿地表工作区，分别延伸了 500 米和 600 米。

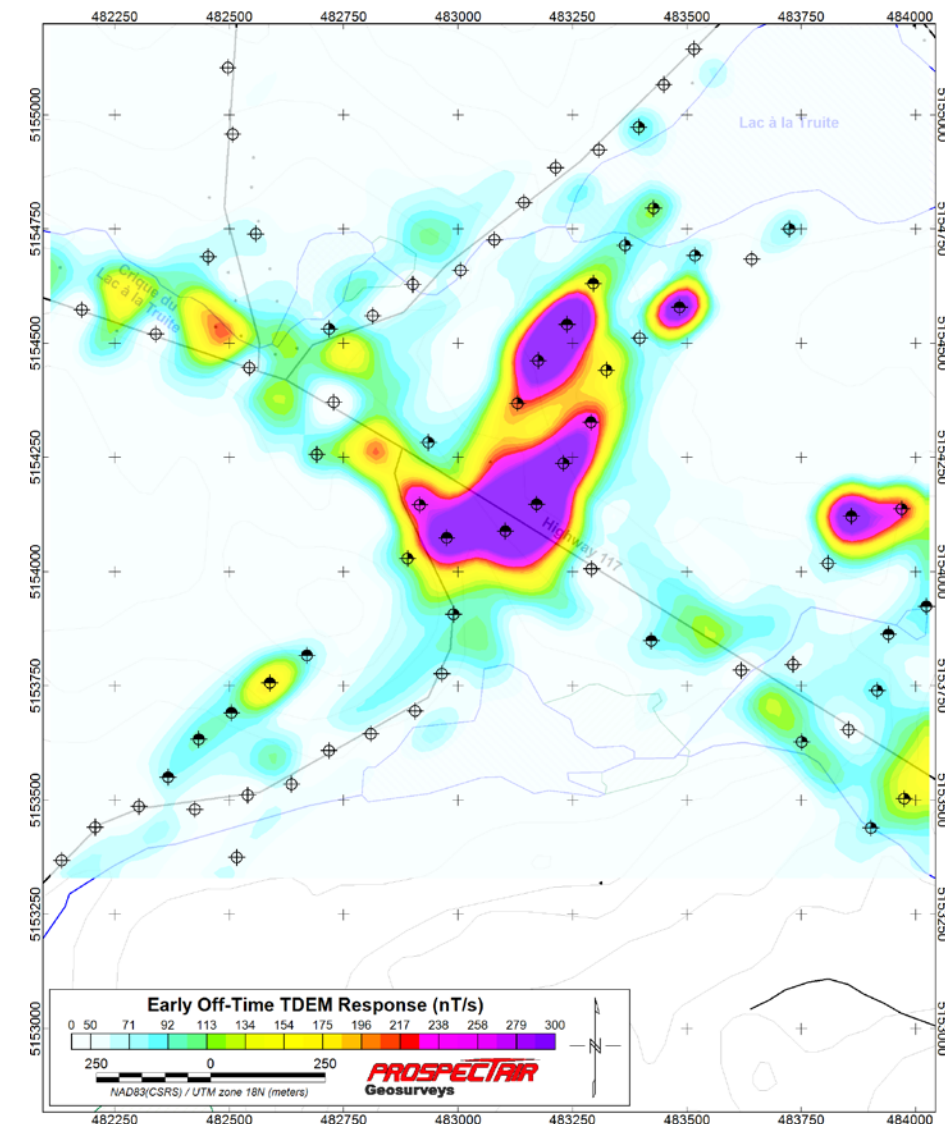
Fourteen grab samples from the 2022 fall program yielded assay results between **1.26% Cg** and **20.5% Cg** with twelve of them grading over **11%**. / 2022 年秋季活动的 14 个抓样样本的分析结果介于 **1.26% Cg** 和 **20.5% Cg** 之间，其中 12 个样本的品位超过 **11%**。

Fifty-seven samples were collected from four trenching locations, yielding **6.21% Cg** over 26 metres (m), **11.76% Cg** over 10 m, **10.32% Cg** over 9.5 m, and **5.06% Cg** over 10m. / 从四个槽探地点采集了 57 个样本，其中包括Cg品位**6.21%**的26米矿段、Cg品位**11.76%**的10米矿段、Cg品位**10.32%**的9.5米矿段和Cg品位**5.06%**的10米矿段

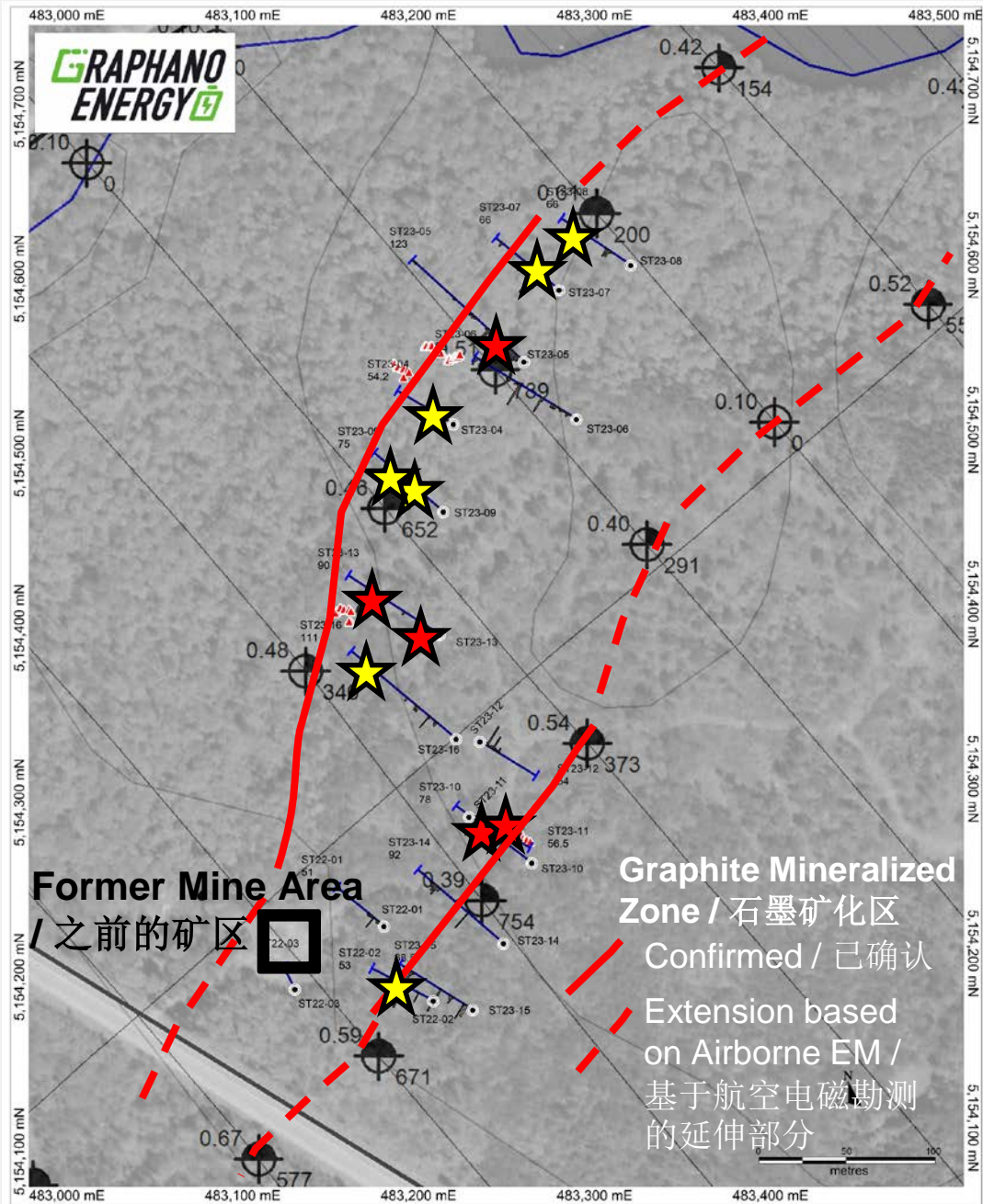
Drilling results are expected to be released in 1Q2023 / 预计2023年第一季度发布钻探结果

### Historical Production / 历史产量

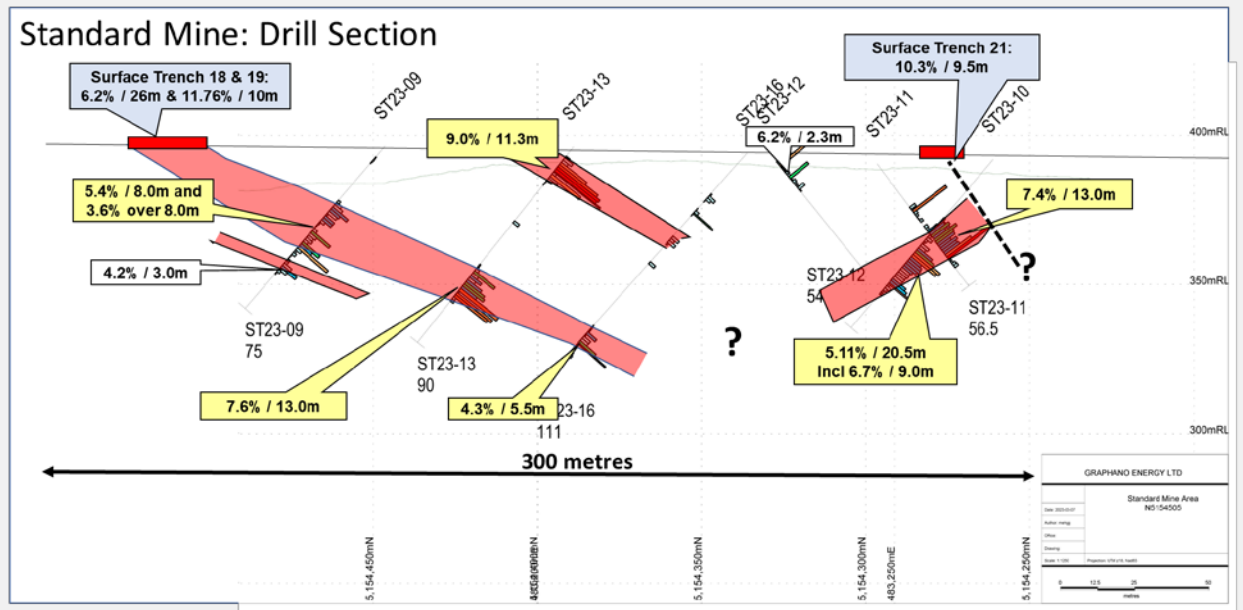
- The original operators produced graphite on a small scale between 1923 and 1930 but ceased operations due to the low unit price of graphite during the 1929 market crash. / 最初的运营商在 1923 年至 1930 年间小规模生产石墨，但由于 1929 年市场崩溃期间石墨单价过低而停止运营。





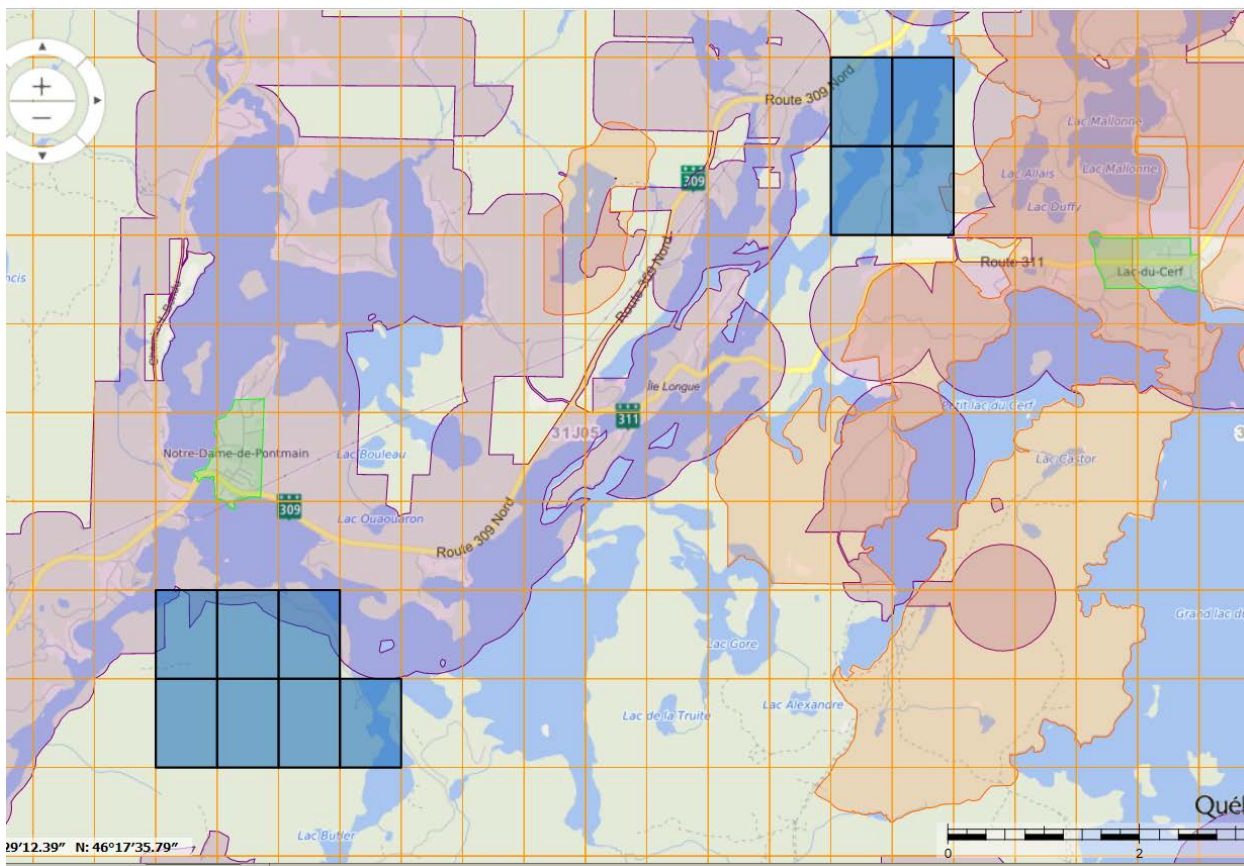


Standard Mine Graphite Project					
Exploration Drill Results					
Hole No.	From (m)	To (m)	Thickness (m)	% Cg	Thickness (m) times % grade
ST22-02	22.50	27.65	5.15	7.69	40
ST23-04	14.00	18.00	4.00	6.66	27
ST23-05	4.60	19.00	14.40	5.79	83
and	30.00	39.00	9.00	4.27	38
ST23-07	17.00	25.50	8.50	5.55	47
ST23-08	53.00	57.00	4.00	6.44	26
ST23-09	26.00	34.00	8.00	3.62	29
and	39.00	47.00	8.00	5.37	43
ST23-10	39.00	59.50	20.50	5.11	105
ST23-11	31.00	44.00	13.00	7.44	97
ST23-13	4.20	15.50	11.30	8.99	102
and	56.00	69.00	13.00	7.65	99
ST23-16	84.00	89.50	5.50	4.25	23





# Dudley and Lac Vert-Bouthillier Graphite Projects / Dudley和Lac Vert-Bouthillier石墨项目



- The Company has staked two sets of additional graphite claims, 5 km and 10 km south from the Lac Aux Bouleaux project, as part of the Company's consolidation strategy. / 本公司已经标桩了另外两个石墨矿权区，分别位于Lac Aux Bouleaux项目以南5公里和10公里。这是本公司整合策略的一部分。
- A total of 11 claims covering 600 hectares were staked and comprise the Dudley and Lac Vert-Bouthillier graphite showings. / 总计已经标桩了11个矿权区，面积600公顷，包含Dudley和Lac Vert-Bouthillier石墨表象区。
- The development of historical graphite deposits as well as new discoveries, all within trucking distance, should allow for resource consolidation to one processing centre at Lac Aux Bouleaux. / 历史石墨矿床和新发现的石墨矿床都在卡车运输可到达的范围内，因此开发这两类项目可以将资源整合到位于Lac Aux Bouleaux 的一个加工中心。



# Management Team / 管理团队

**Luisa Moreno, Ph.D., CEO** – Dr. Moreno possesses unparalleled expertise in strategic minerals and related processes. She is currently Founder and Managing Director at Tahuti Global. Prior to this, she spent 7 years as a Financial and Senior Equity Analyst at Canadian financial research and investment banking firms. She is on the board of several strategic minerals. / **Luisa Moreno博士，首席执行官** - Moreno博士在战略矿产和相关工艺方面拥有独特的专业知识，目前是 Tahuti Global的创始人兼董事总经理，在此之前曾在加拿大金融研究和投资银行公司担任过 7 年的金融和高级股票分析师。她目前是多家战略矿产公司的董事会成员。

**Jay Richardson, CFO** – Mr. Richardson is a Canadian Chartered Accountant (CA CPA), a Singapore Certified Public Accountant (CPA) and a Fellow of the Insolvency Practitioners' Association of the United Kingdom (FIPA). He has practiced as a Partner at Ernst & Young (Canada and Singapore) and KPMG (UK) prior to establishing his own practice as a company doctor in Toronto, Canada in 1993. He has served as the CEO or Chairman of eight listed public companies and as CFO of numerous others. He has extensive public company governance experience from over a dozen Board memberships including having served as Interim Chairman of the Argus Corporation. / **Jay Richardson, 首席财务官** – Richardson 先生是加拿大注册会计师 (CA CPA)、新加坡注册会计师 (CPA) 和英国破产从业者协会 (FIPA) 会员，曾在安永会计师事务所 (加拿大和新加坡) 和毕马威会计师事务所 (英国) 担任合伙人，1993 年在加拿大多伦多创立了自己的企业顾问公司，曾担任八家上市公司的首席执行官或董事会主席，还担任过许多其他公司的首席财务官。他担任过十多家公司的董事会成员，包括 Argus Corporation 的临时董事会主席，拥有丰富的上市公司治理经验。

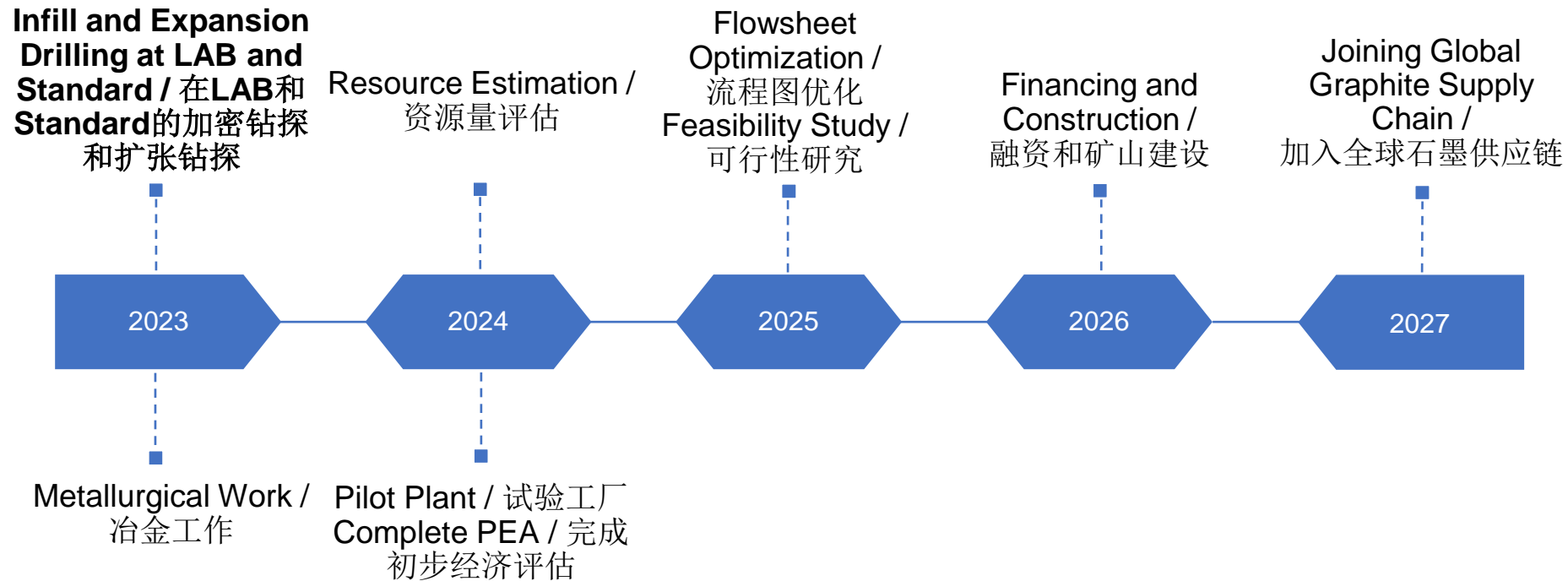
**Nathan Rotstein** - Mr. Rotstein has over 45 years of experience in the financial markets. He has consulted with numerous companies in the energy metals sectors including but not limited to cobalt, manganese, graphite and lithium. Nathan also has an extensive global network comprising international funds and high net worth individuals. / **Rotstein先生**拥有超过 45 年的金融市场经验，曾为能源金属领域的众多公司提供咨询服务，包括但不限于钴、锰、石墨和锂。Nathan 还拥有广泛的全球人脉网络，包括国际基金和高净值个人。

**Martin Kepman, Director** – Martin Kepman and Associates Inc, founded in 1982, is a business development and management consulting firm owned and operated by its president Martin Kepman. Martin, in his 34 years of consulting experience, has consulted on a wide range of projects, in multiple industries ranging from software, soft goods, printing, food to mining. / **Martin Kepman, 董事** – Martin Kepman and Associates Inc 创建于 1982 年，是一家由总裁 Martin Kepman 拥有并运营的企业发展与管理咨询公司。在他 34 年的咨询生涯中，Martin 为不同行业的许多项目提供了咨询服务，包括软件、软质商品、印刷、食品和矿业。

**Roger Dahn, Director** – Mr. Dahn has over 30 years experience in the mining and exploration industry. His experience includes over 16 years with Noranda Inc. and Hemlo Gold Mines Inc., Exploration Manager-Eastern Canada for Battle Mountain Gold Company and Vice President-Exploration with Olympus Pacific Minerals Inc. and most recently Tri-Star Resources PLC. Mr. Dahn has been involved with a number of base metal and gold discoveries which advanced to development stage and production. His extensive mineral exploration experience covers both Canadian and International settings. Mr. Dahn is a registered professional geologist and Qualified Person as defined by National Instrument 43-101. / **Roger Dahn, 董事** – Dahn 先生拥有 30 多年采矿和勘探行业的经验，曾在 Noranda Inc. 和 Hemlo Gold Mines Inc. 工作超过 16 年，担任过 Battle Mountain Gold Company 的加拿大东部勘探经理、Olympus Pacific Minerals Inc. 的勘探副总裁，最近还担任过 Tri-Star Resources PLC 的副总裁。Dahn 先生参与了许多基本金属和金矿的发现，这些发现区都已进入开发和生产阶段。他丰富的矿产勘探经验包含加拿大和国际工作经验。Dahn 先生是注册专业地质学家，也是 NI 43-101 规定的合格人士。



# Project Development Timeline / 项目开发时间表





# Financial Details

## 财务状况

<b>Number of Shares / 股票数量</b>	17,038,268
<b>Options / 期权</b>	1.5 million / 150万
<b>Warrants / 认股权证</b>	13,208,948
<b>Shares fully diluted / 完全摊薄后股数</b>	31,747,216
<b>Cash / 现金</b>	\$2.3 million / \$230万
<b>Market cap / 市值</b>	\$4.6 million / \$460万

February 2023 / 2023年2月



# Contact 联系方式

**Luisa Moreno, CEO and Director / 首席执行官兼董事**  
[moreno@graphano.com](mailto:moreno@graphano.com)

**219 - 120 Carlton Street  
Toronto, Ontario  
M5A 4K2**