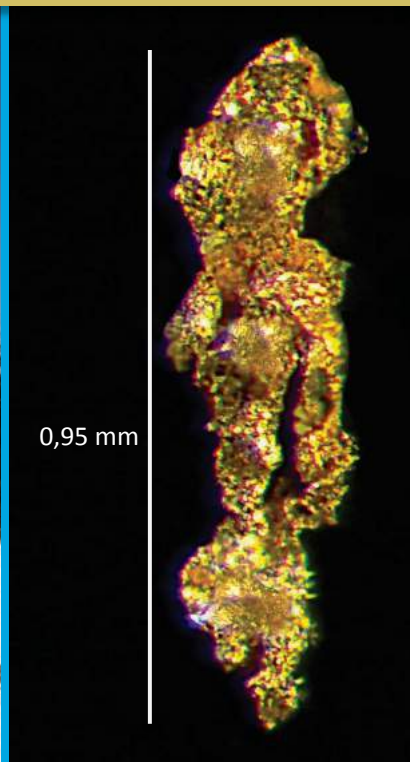


## GOLD EXPLORATION IN SOUTHERN QUEBEC

TSX-V: BGF



JUNE 2023



# CAPITAL STRUCTURE

Shares Outstanding: 74,680,209

## Ownership:

HPQ Silicon 6%

Insiders: 15%

Institutional: 8%

Spin-Out de HPQ Silicon



IPO: February 2019

## Management & Directors

**PATRICK LEVASSEUR:** President & CEO, Director

**BERNARD J. TOURILLON,** B.A.A, MBA – Chairman, Director

**ROBERT GAGNON – P. GEO – Director,**  
Geologist, President & CEO Pershimex Resources

**ANN LEVASSEUR, B.COM,- CIM – Director**  
VP Investment Advisor Laurentian Bank Securities,

**LAM CHAN THO,** Bsc. A., Eng. MBA, LLB – Director

**FRANCOIS RIVARD - CFO**

**JEAN BERNARD - Geologist**

**MARC RICHER-LAFLECHE – PhD Geologist**



[www.beaucegold.com](http://www.beaucegold.com)



3000 Omer-Lavallée St, Suite 306  
Montreal, Quebec, CANADA, H1Y 3R8



+1 514 846 3271







HPQ – SILICON  
RESOURCES



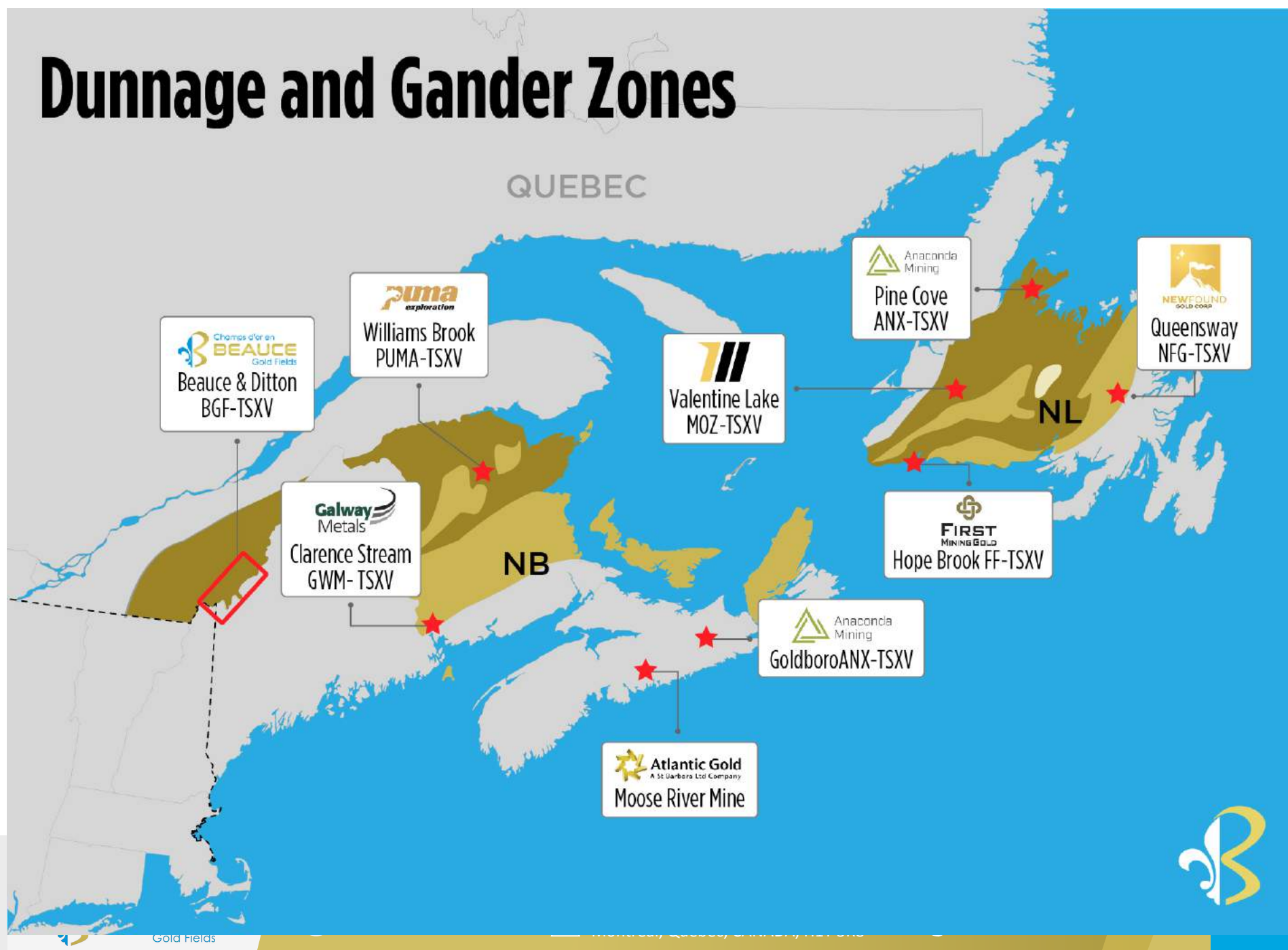
## TSV-V: HPQ



HPQ  
LISTED  
TSXV

OTCQX HPQFF  
THE BEST MARKET

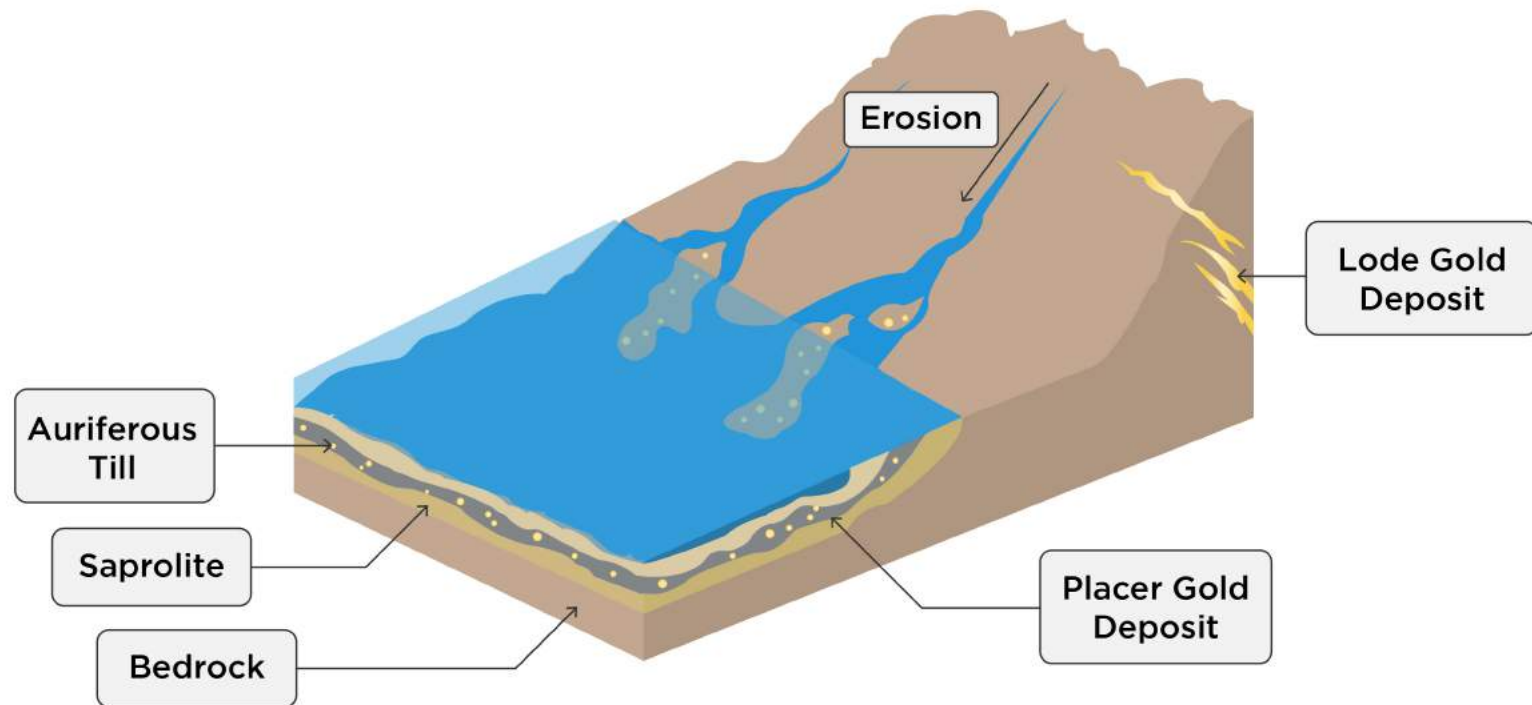
# Dunnage and Gander Zones



# PLACER GOLD TO LODE GOLD EXPLORATION

## What is Placer Gold?

It's gold that has been dislodged from a bedrock source by erosion or other forces of nature and transported to form a secondary deposit

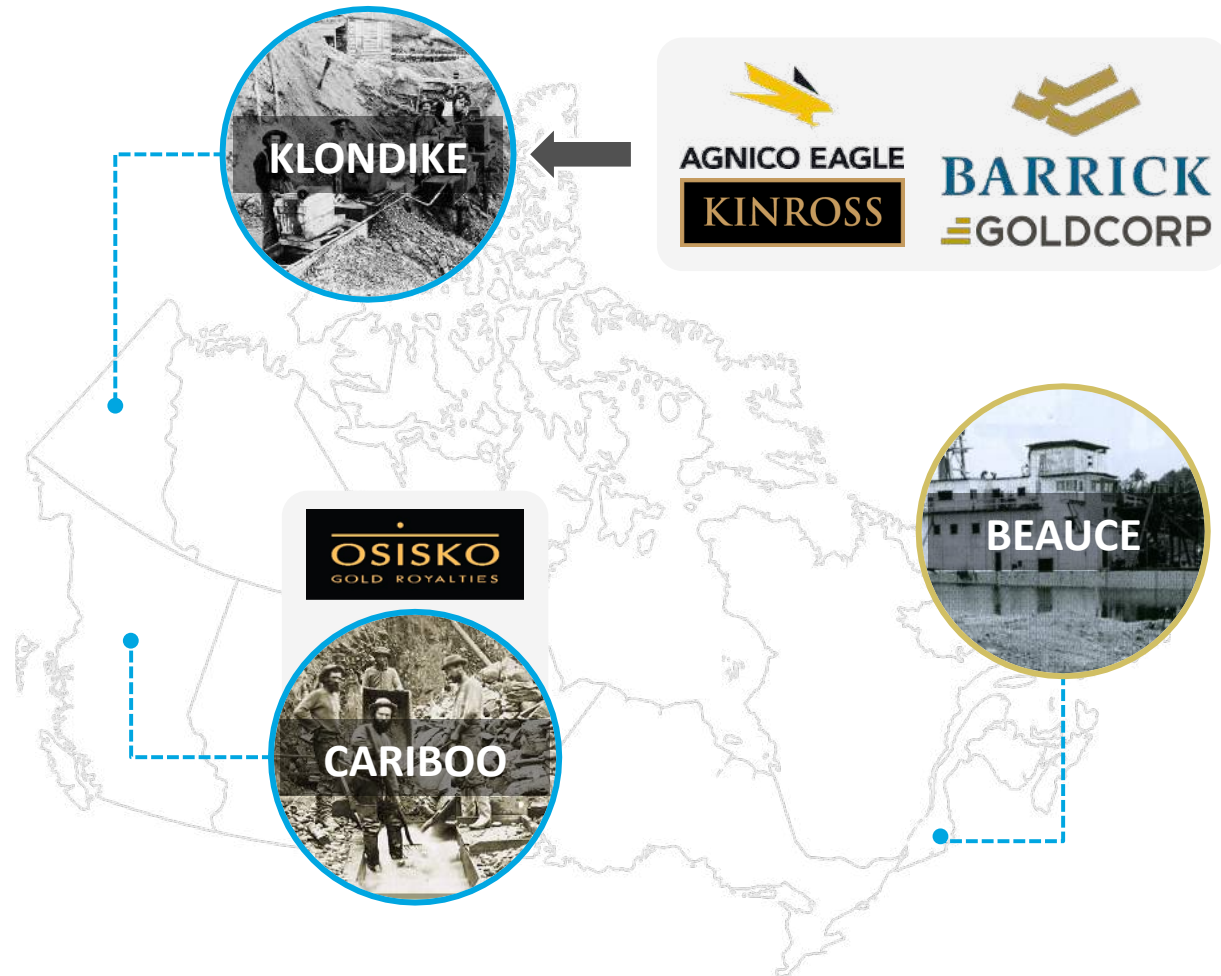


# PLACER GOLD DISTRICTS IN CANADA

Recent placer to lode gold discoveries attracting majors

Beauce is the last remaining Canadian placer to hard rock gold exploration project to be explored

After decades of being overlooked, recent lode gold discoveries in the Yukon and BC placer fields has lead to a modern gold rush with major gold companies investing in historical placer gold properties





# Biggest Claim Holders in Largest Placer Gold District in Eastern North America

Many Firsts in Canadian Mining History



First Canadian Gold  
Company



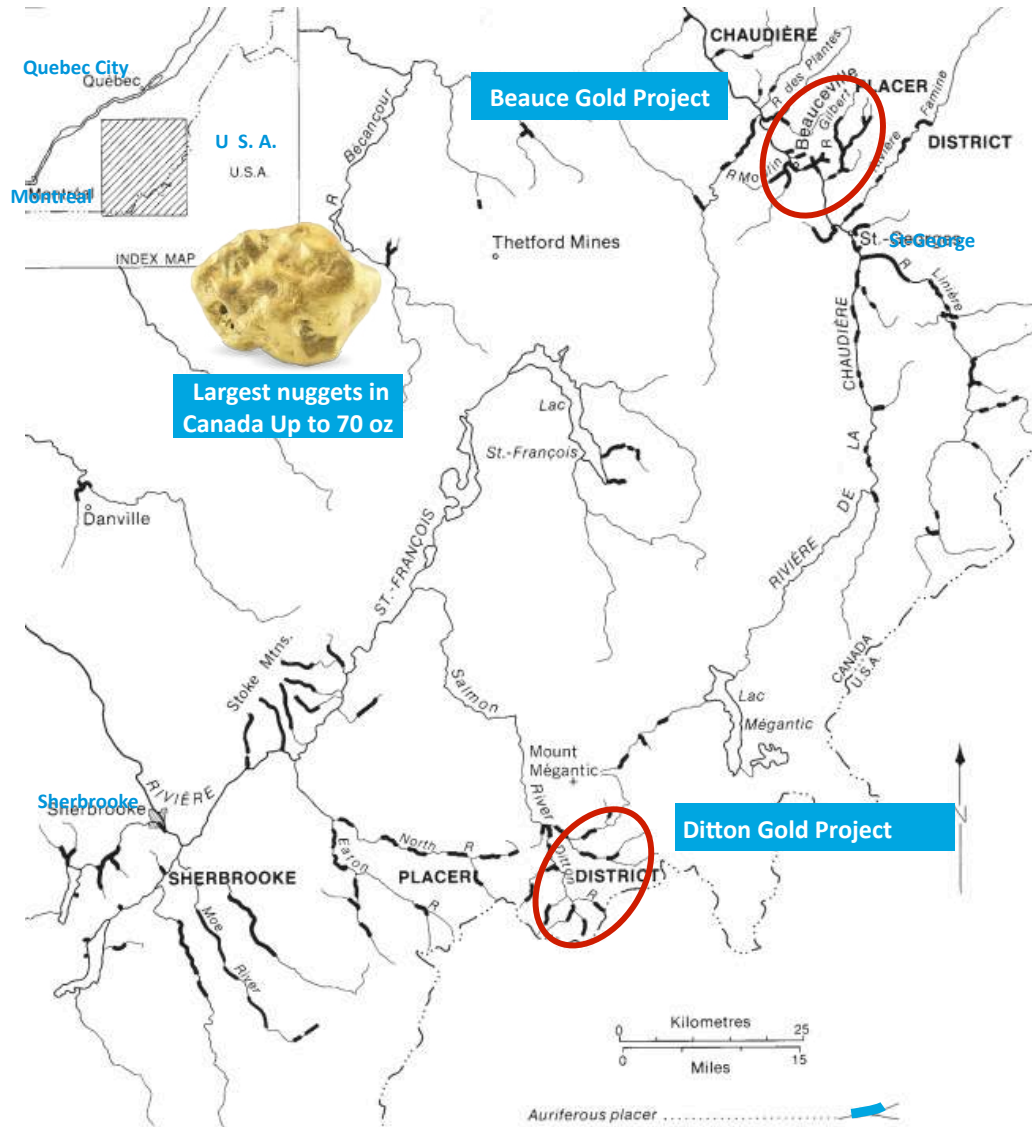
First gold rush in Canada  
before the Klondike



Placer Mines 1847 to  
1890s



Largest Gold Dredging  
Operation in the East



# BIGGEST BLUNDER IN CANADIAN MINING HISTORY:

## 100 years no gold exploration in Southern Quebec

After gold was discovered in the Beauce in 1847, Lord Charles-Joseph, the great grandson of Seigneur Chaussegros DeLery, claimed the family held patent rights to gold & silver in the Beauce. He hastened to obtain the letters patent of the government of London granting him the exclusive and perpetual control of the exploitation of all the precious metals found on the lands of his seigneurie.

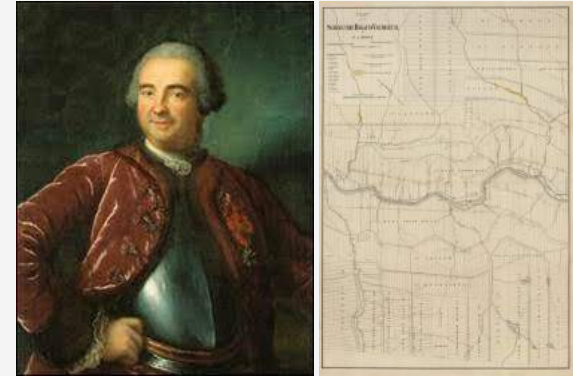
The Seigniorial system was abolished in 1854. The former tenants of the seignory in the Beauce, having obtained full ownership of their land, contested the validity of the gold patents.

The Chaussegros DeLery family imposed large royalties on miners. Lawsuits and at times violent opposition erupted between mining companies, local miners and farmers.

To prevent Seigniorial descendants from monopolizing the provinces mineral resources, the government established in 1864, the Gold Mines Act. The introduction of the concept of mineral claims brought about a real conceptual revolution. It constitutes the very foundation of the mining regime we know today.

1881, the provincial government challenged the validity of DeLery's patent in court and demanded that it be declared illegal and quashed. In 1884, the Courts upheld the DeLery family and many other gold patents rights.

**Outcome, it became impossible throughout Southern Quebec for mining companies to stake claims for mineral exploration. It was only in 1985 that the provincial government took back mineral rights and made the region available for claiming.**



Seigneur\* Chaussegros DeLéry and map of the Rigaud Veaudreuil Seingory (Estate) today known as the Beauce

\*A Seigneur was an aristocratic title equivalent to a Lord, the Seigniorial system was a feudal system of land ownership before the British invasion of New France (Quebec) in 1759.

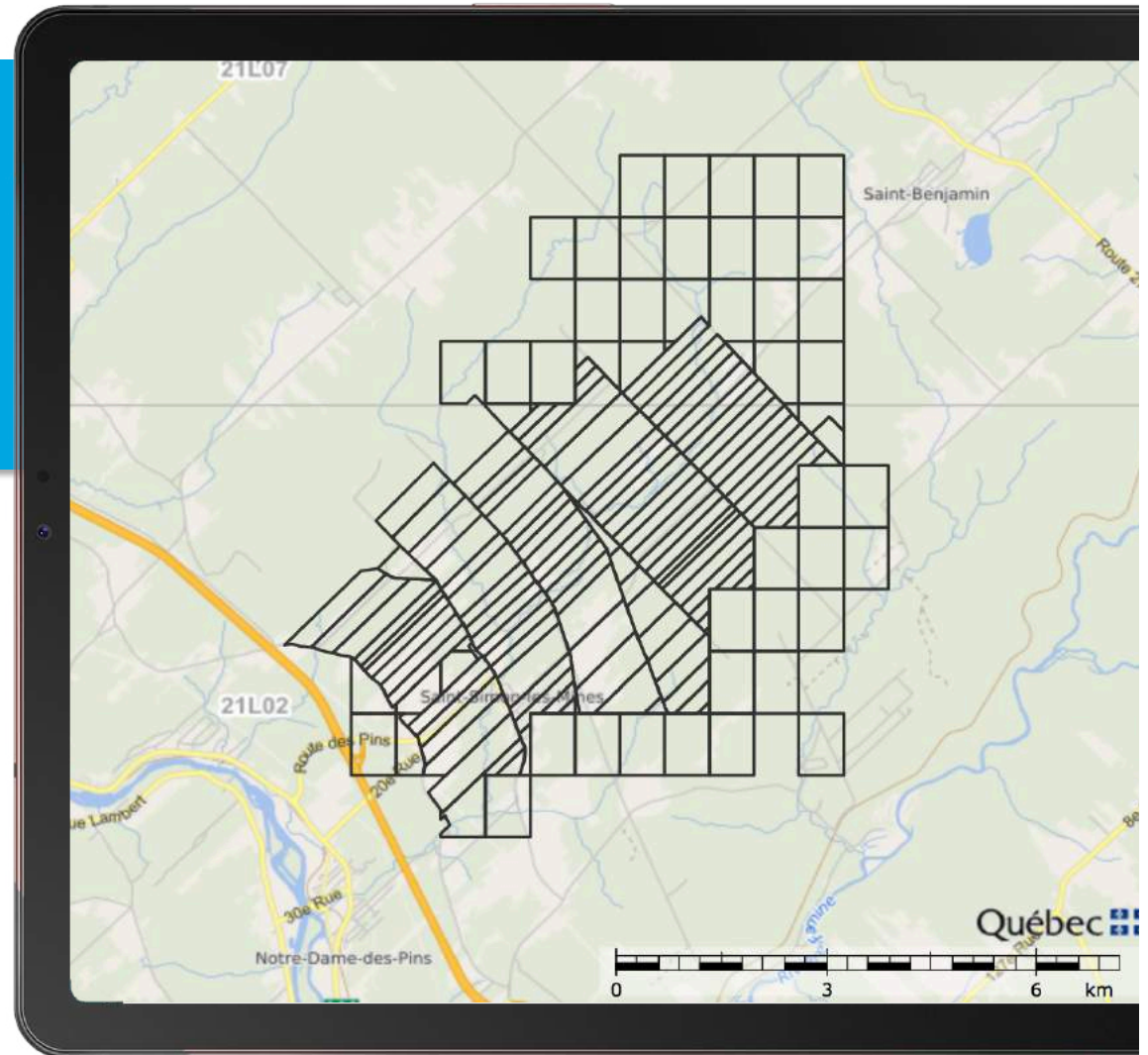
### Chaussegros DeLery family VS Miners & Farmers





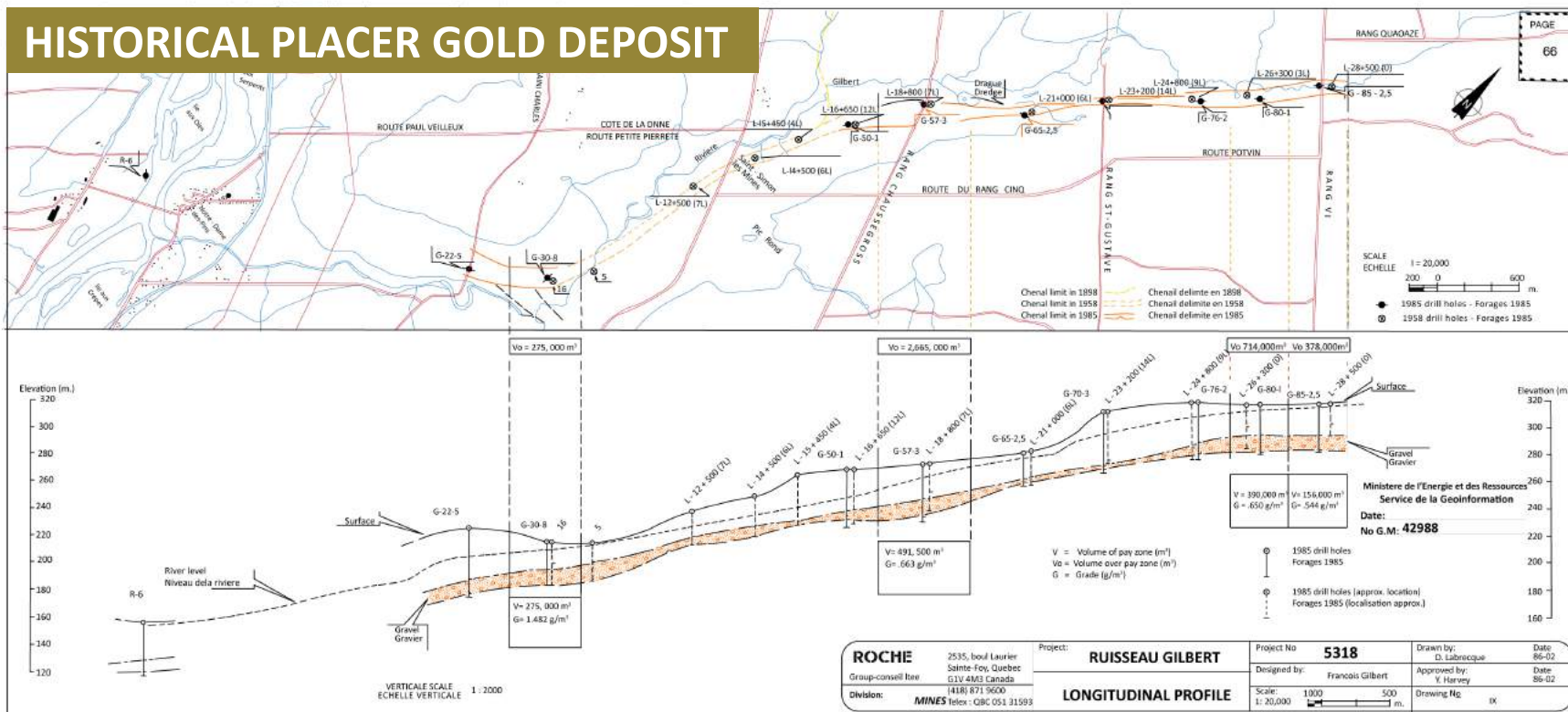
# BEAUCE GOLD PROPERTY

**152+** claims  
**175 acres**  
(7 lots) of real estate



# LARGEST HISTORICAL PLACER GOLD DEPOSIT IN EASTERN NORTH AMERICA

Gold Exploration Target for the entire historical placer channel ranges between **61,000 ounces** (2,200,000 m<sup>3</sup> @ 0.87g Au/m<sup>3</sup>) and **366,000 ounces\*** (2,200,000 m<sup>3</sup> @ 5.22 g Au/m<sup>3</sup>)  
 \*source: Beauce NI43-101 Technical Report 2018.



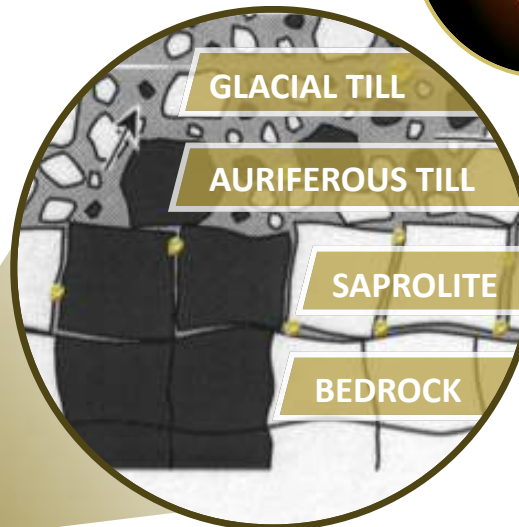
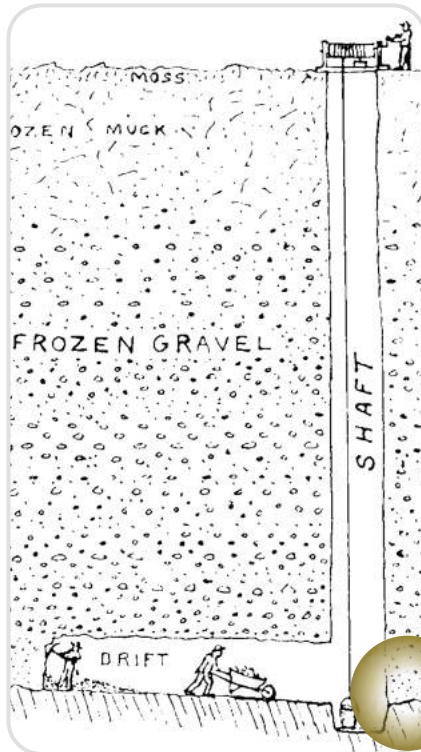


# PLACER MINED UNDERGROUND

NOT alluvial gold. The historically mined placer gold deposit sits in units of saprolite and a diamictite (auriferous) till covered by a glacial till overburden

**6 KM OF TUNNELS!**

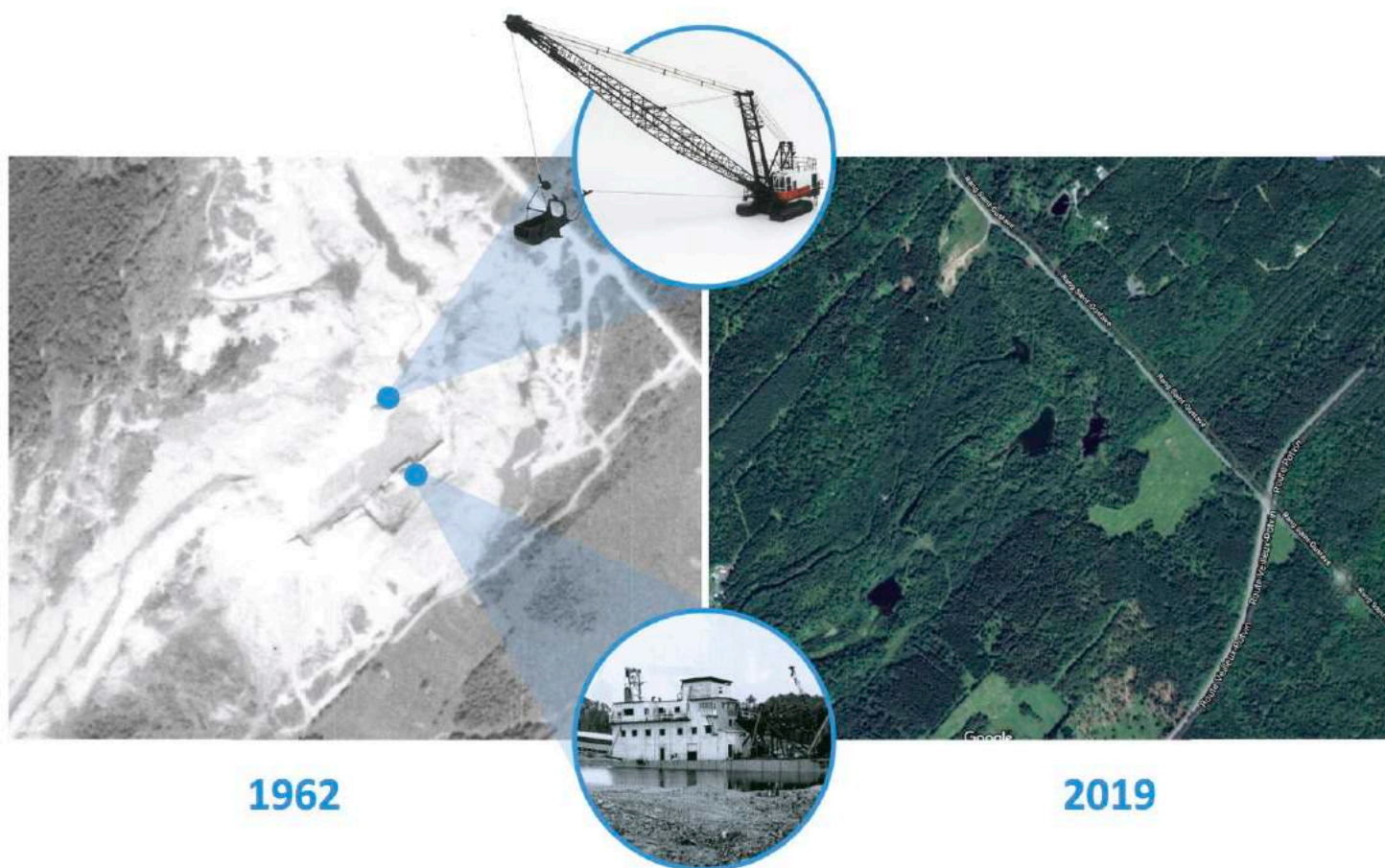
## AURIFEROUS TILL & SAPROLITE





# LARGEST PLACER GOLD MINING OPERATION IN EASTERN NORTH AMERICA

## STRIPPING & DREDGING



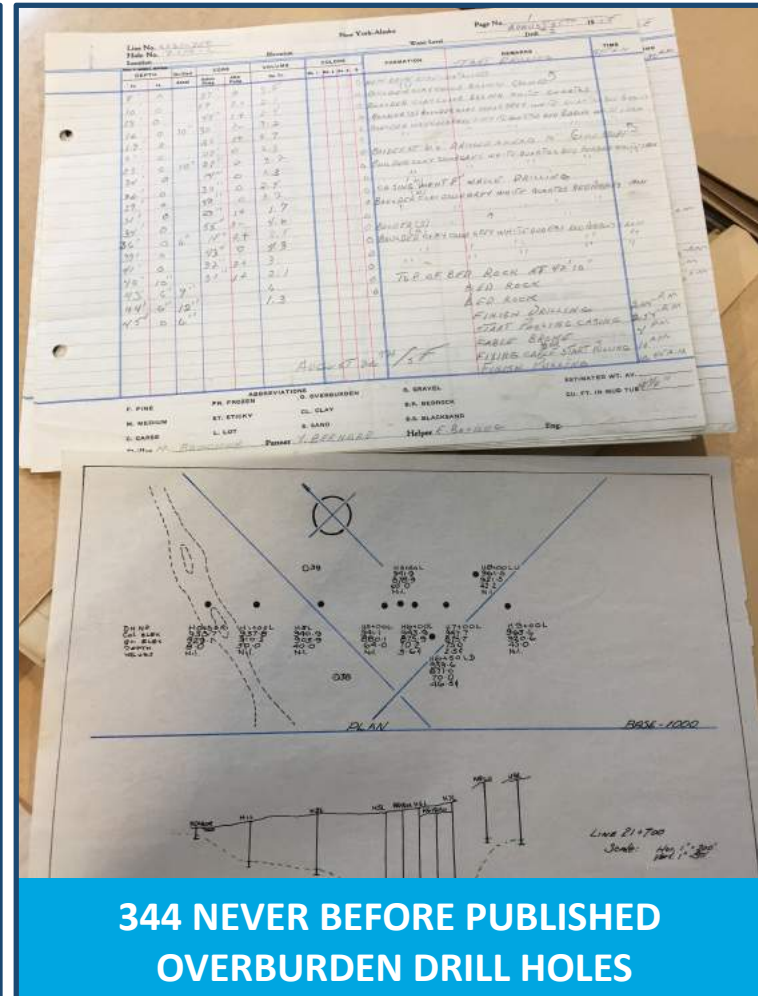
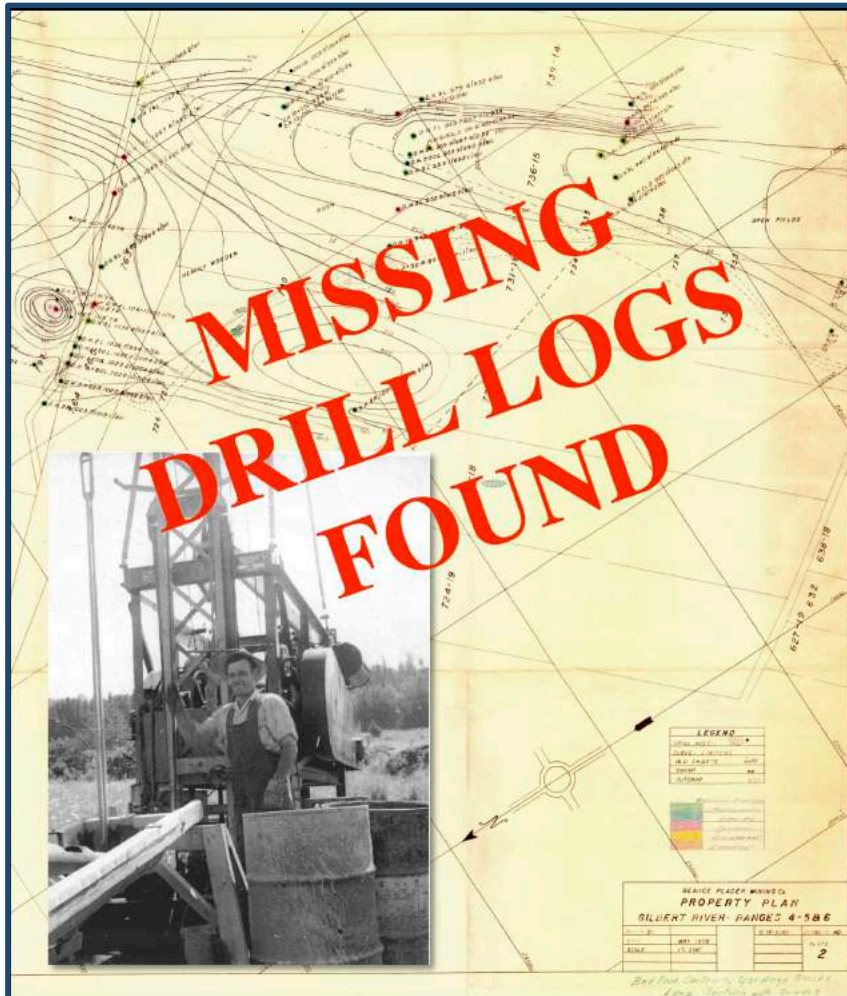
1962

2019



# EXPLORATION MILESTONE

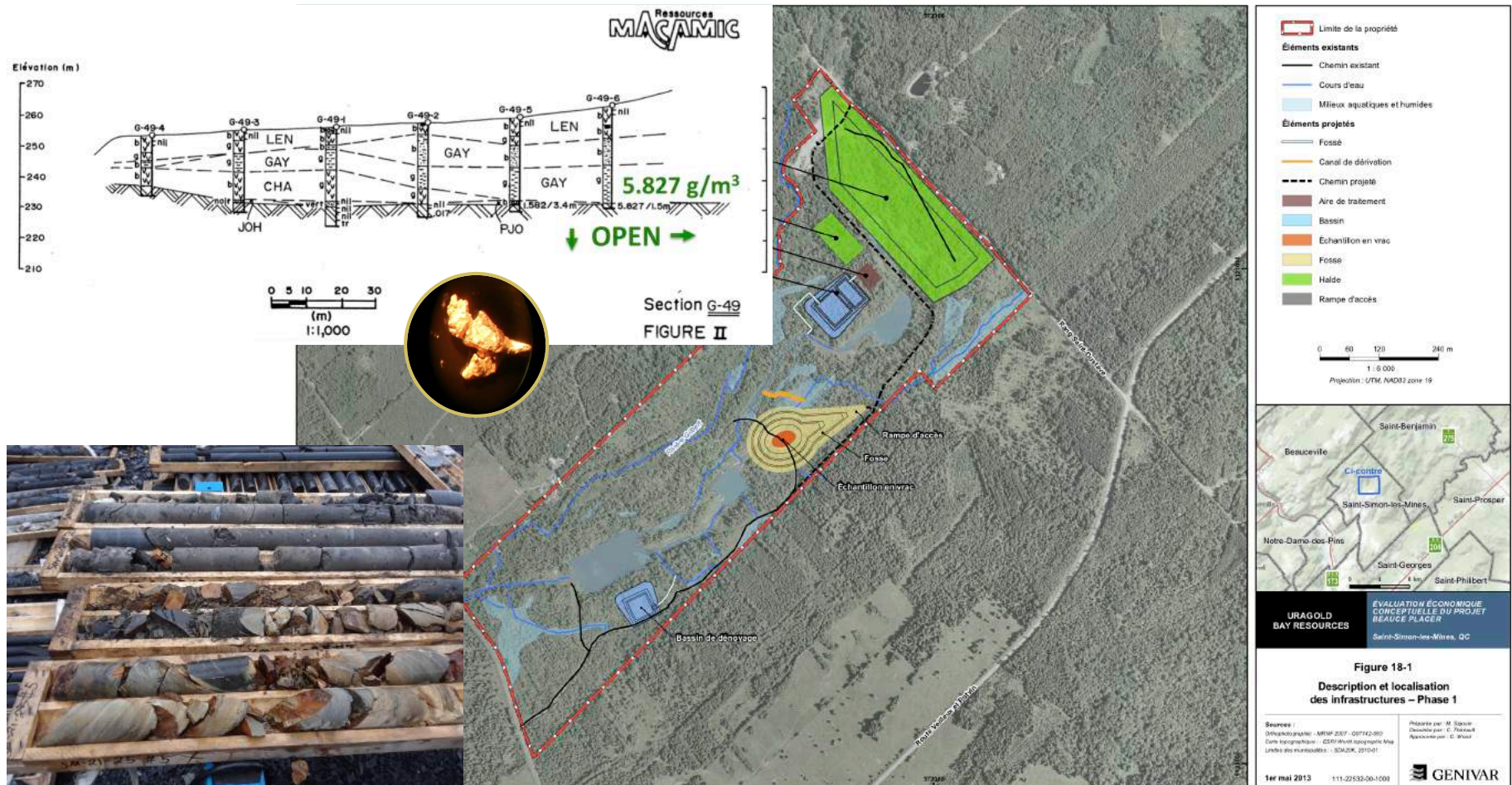
## Lost 1950s Drill Logs & Records Found



**344 NEVER BEFORE PUBLISHED  
OVERBURDEN DRILL HOLES**



# Paleoplacer Gold Deposit Underestimated: Open laterally and at depth





# Paleoplacer Gold Deposit Underestimated

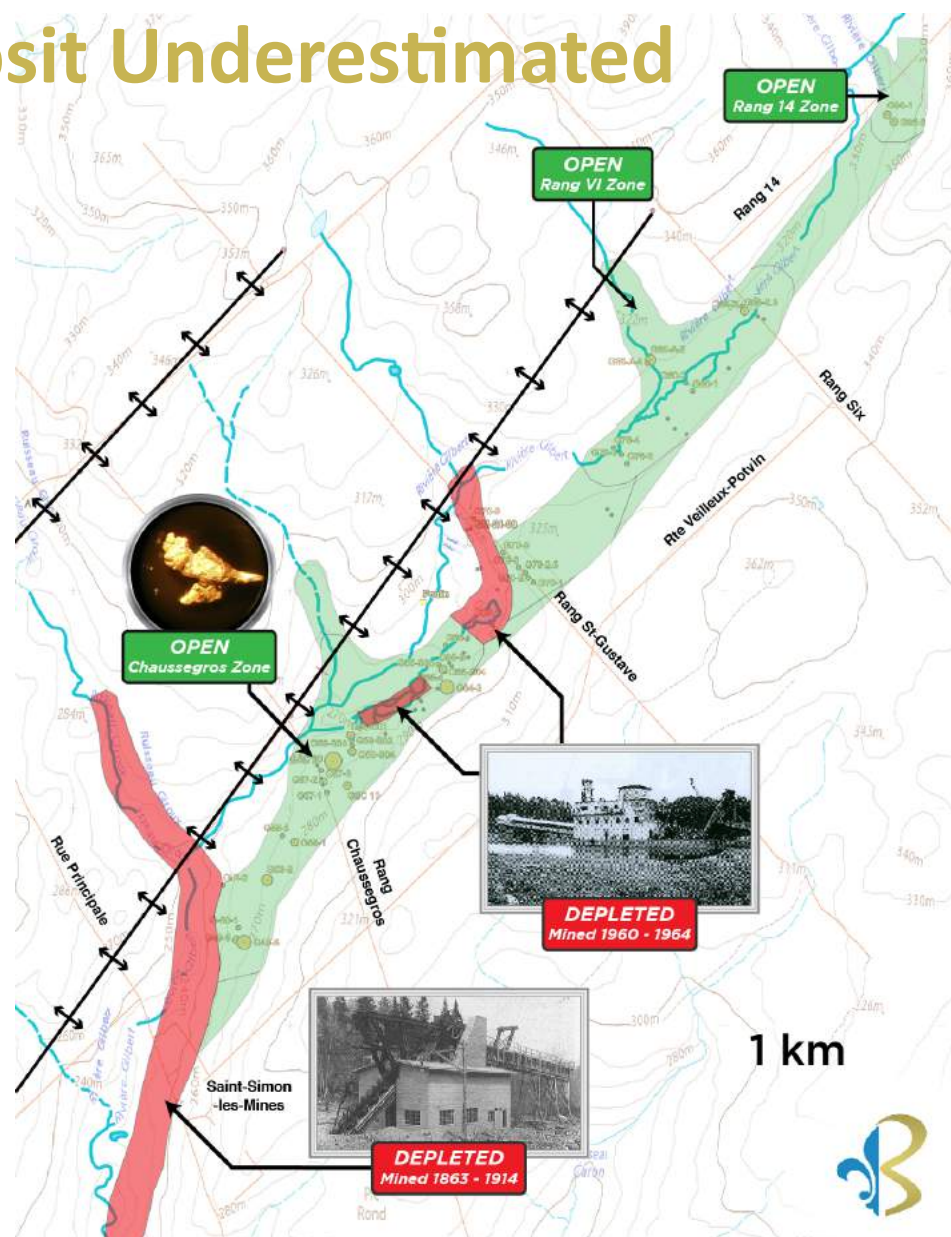
4 km of gold channel placed not exploited

Many KM of unexplored channel

The tributaries supplied the Gilbert River Valley with Tertiary and Quaternary gold

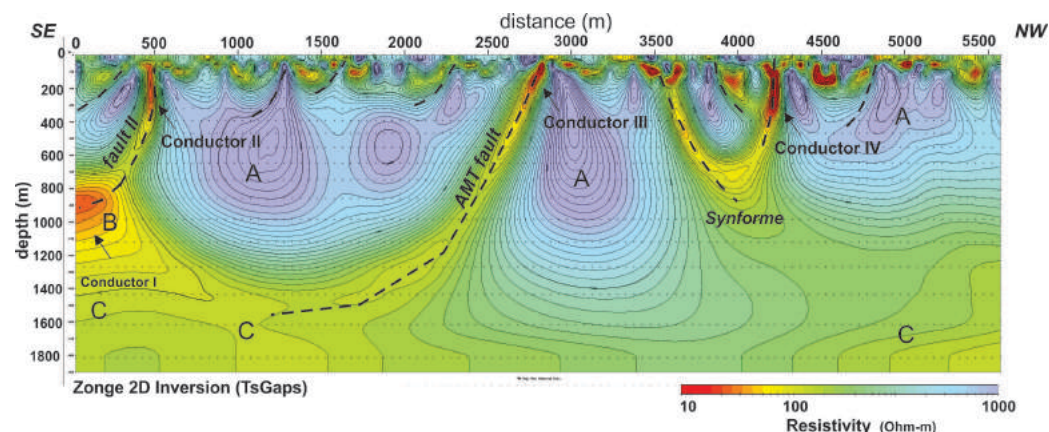
Origins of gold grains are both detrital and chemically derived

Possibility of increasing the exploration target by **61,000 ounces** (2,200,000 m<sup>3</sup> @ 0.87g Au/m<sup>3</sup>) and **366,000 ounces\*** (2,200,000 m<sup>3</sup> @ 5.22 g Au/m<sup>3</sup>)



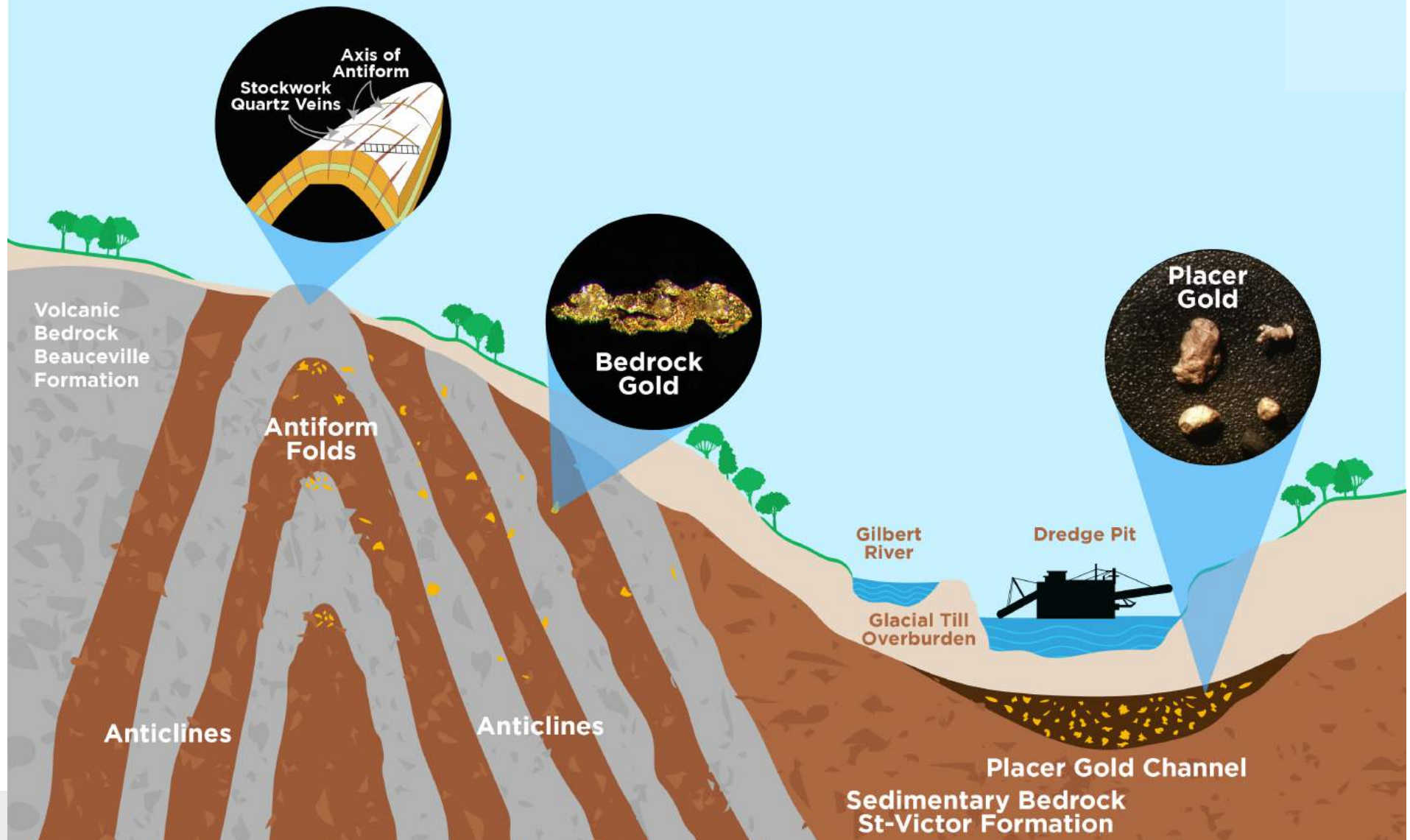
# We're the first to apply modern exploration in 40 years:

- Historical documents
- More than 20 km of Geophysics
- Hundreds of rock samples
- More than 50 trenches dug
- 38 diamond drill holes





# GEOLOGICAL MODEL - SADDLE REEF FORMATION

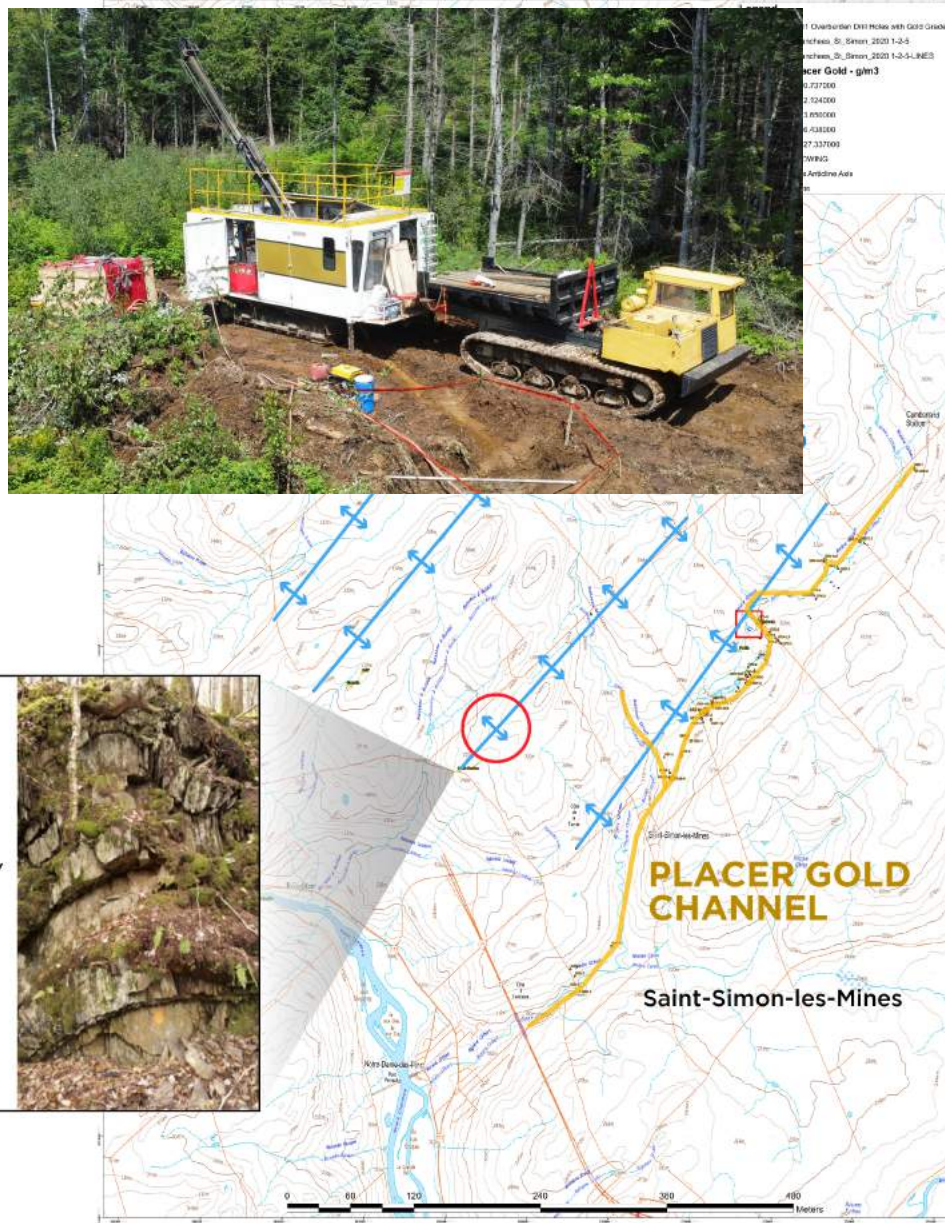




# Honing in on the source

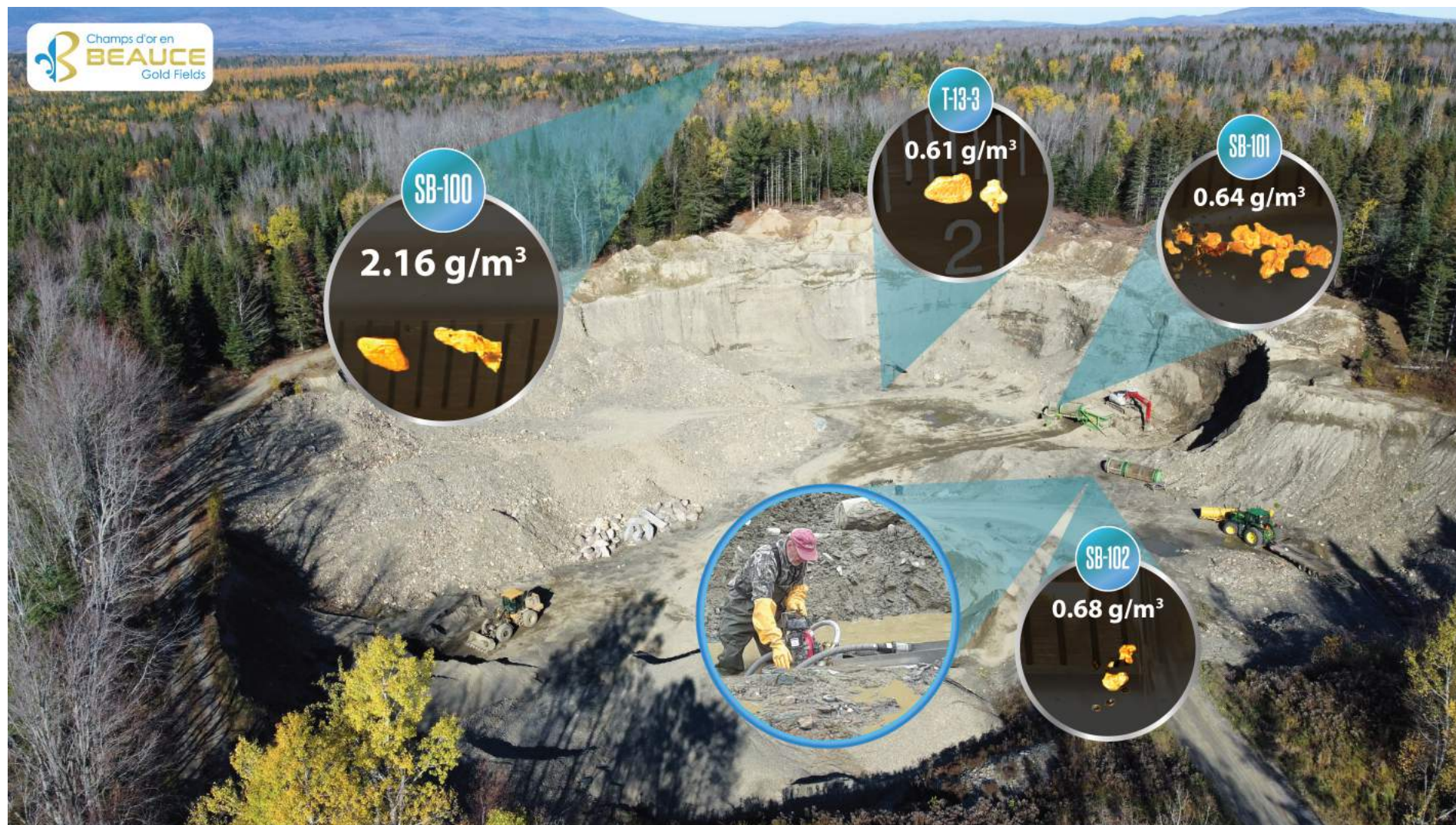
Lode gold source believed to be North to Northeast of placer gold channel.

Potential Australian, Bendigo type Saddle Reef formation. (20 million ounces)





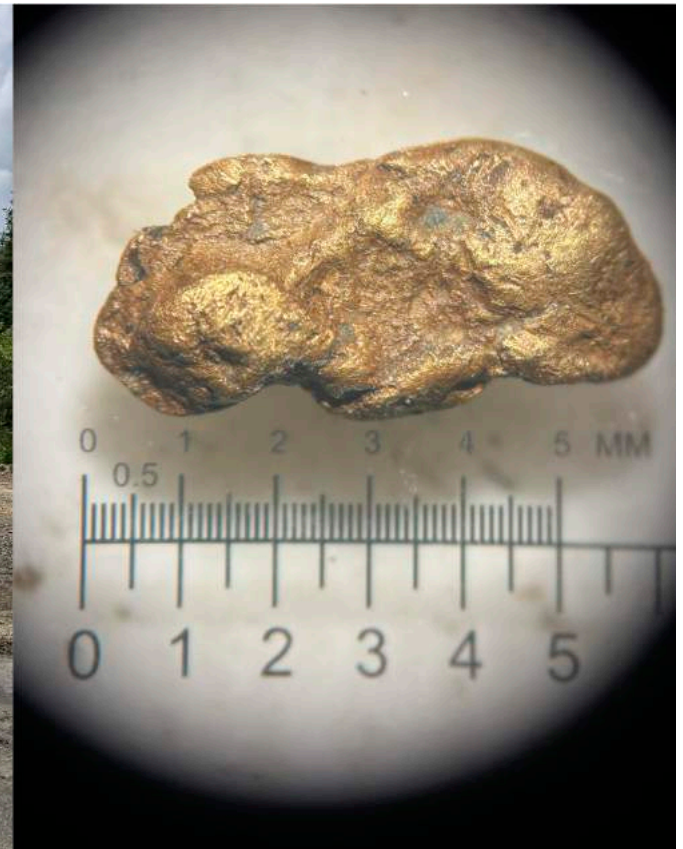
# DITTON PROPERTY





# Exploration 2022 - 2023

10 Sonic Drill Holes, 180 Bulk Sample and 4 Lines of Geophysics





For more information contact

Patrick Levasseur, President & CEO

(514) 262-9239

patrick.levasseur@beaucegold.com



Lost of info on our YouTube channel

<https://www.youtube.com/@beaucegoldfields>

Visit and subscribe!

