

GEOLOGICA RESOURCE CORP.

CORPORATE UPDATE / 公司更新

SEP 2023 / 2023年9月



Copper demand shortfall could reach 9.9 million mt by 2035
到 2035 年，铜需求缺口可能达到 990 万公吨

Disclaimer – Important / 免责声明 – 重要

You Must Read the Following before Continuing

在继续浏览本文件之前请务必阅读以下内容

Forward Looking Statements – Geologica Resource Corp.

- This presentation contains “forward-looking statements”. Forward-looking statements reflect Geologica Resource Corp.’s (the “Company” or “Geologica”) current views with respect to future events, are based on information currently available to the Company and are subject to certain risks, uncertainties, and assumptions. Forward-looking statements include, but are not limited to, statements with respect to the success of mining exploration work, title disputes or claims, environmental risks, unanticipated reclamation expenses, the use of proceeds, the estimation of mineral reserves and resources and capital expenditures. In certain cases, forward-looking statements can be identified by the use of words such as “intends”, “plans”, “expects” or “does not expect”, “is expected”, “budget”, “scheduled”, “estimates”, “forecasts”, “anticipates” or “does not anticipate”, or “believes”, or variations of such words and phrases or state that certain actions, events or results “may”, “could”, “would”, “might” or “will be taken”, “occur” or “be achieved”. Forward looking statements involve known and unknown risks, uncertainties and other factors which may cause the actual results, performance or achievements expressed or implied by the forward- looking statements. The readers are advised to read the section titled “Forward Looking Statements” found on Pages 11 - 12 of the Company’s preliminary long form prospectus for full discussion of these factors.

- Some of the technical information contained in this presentation regarding the Topley Property has been summarized from the Technical Report titled “NI 43-101 TECHNICAL REPORT on the TOPLEY PROPERTY, Topley Landing, Babine Lake Area, Omineca MD, BC”.

CONFIDENTIAL

Copper Is the New Oil* / 铜是新石油*

- Deficit in the copper market is set to deepen over the next several years /铜市场供应缺口在未来几年将加剧
 - strong demand from the power and construction sectors, compounded by the proliferation of electric vehicles / 电力和建筑部门的强劲需求，加上电动汽车的激增
 - **Copper demand to double** to 50 million MT by 2035 from current demand of 25 million mt / 铜需求将从当前的2500万公吨增长一倍到2035年的5000万公吨
- A copper deficit is set to inundate global markets throughout 2023, fueled by increasingly challenged South American supply streams and higher demand pressures (CNBC, Feb. 2023). /在南美洲供应流日益受到挑战和需求压力增加的推动下，2023 年全球市场将面临铜短缺的局面（CNBC， 2023年2月）
- Fitch Solutions forecasts a shortfall of 489,000 tonnes in 2024, rising to 510,000 tonnes in 2027. / 惠誉解决方案公司预测，2024年铜市场的供应缺口为48.9万吨，2027年将上升到51万吨。
- The price of copper climbed from a pre pandemic price of \$6,276.50 / ton to \$9,820.50 / ton as of April 25, 2022 a 56% increase. / 铜价从疫情前的\$6276. 50/吨攀升至2022年4月25日的\$9820. 50/吨，增长了56%。
- Goldman Sachs predicts Copper to reach \$15,000 per tonne by 2025 / 高盛预测铜价有望在2025年达到\$15, 000/吨

* Goldman Sachs: Green Metals, Copper is the New Oil, May 4, 2022

* 高盛：绿色金属，铜是新石油，2022年5月4日

CONFIDENTIAL

Previous Milestones / 之前的里程碑

- Acquired Topley Landing property, October, 2020 / 2020年10月收购Topley Landing项目区
- Re-aligned board of Directors with mining and exploration expertise / 重新调整的董事会拥有采矿和勘探方面的专业知识
- Acquired additional claims at Topley Landing May 2021 / 2021年5月在Topley Landing收购更多矿权区
- \$683,000 IPO and listing on the CSE October 25, 2022 / 2022年10月25日在加拿大证券交易所（CSE）首次公开上市，融资\$68.3万
- Acquired additional claims at Topley Landing February 2023 / 2023年2月在Topley Landing收购更多矿权区
- Engaged with First Nations Winter 2022/Spring 2023 / 2022年冬季/ 2023年春季与原住民接洽
- Received consent from first nations and BC government for IP survey in July 2023 / 2023年7月收到原住民和卑诗省政府的同意进行激发极化勘测
- Only 24,681,203 shares outstanding, 27,503,903 fully diluted / 发行在外股票只有24,681,203股，完全摊薄后股票为27,503,903股

Experienced Board of Directors / 经验丰富的董事会

- Bob McKnight P.E.g., MBA, Director / 专业工程师、工商管理硕士、董事
 - Has been involved in over \$1.5 billion in project debt, equity, stream and M&A transactions. Nevgold Corp. – CFO/Exec. VP, Nevada Copper - Executive VP, CFO; Endeavour Financial - Director; Yukon Zinc Corp. – VP, CFO / 曾参与并负责价值超过\$15亿的项目，包括债权、股权、金属流和并购，是Nevgold Corp.的执行副总裁兼首席财务官，Nevada Copper的执行副总裁兼首席财务官，同时担任 Endeavour Financial的董事、Yukon Zinc Corp.的副总裁与首席财务官
- Mark Miyaoka – BS Eng., Director / BS工程师，董事
 - Executive with 30 + years diverse experience, including Unocal, SeisLink, Rock Solid Images, TerraData GeoSciences and MyLand Resources; emphasis on exploration and production activities, which included developing geophysical imaging techniques to enhance productivity and de-risk reserve estimates. / 拥有30多年丰富经验的高管，曾任职于包括优尼科、SeisLink、Rock Solid Images、TerraData GeoSciences和 MyLand Resources；重点负责勘探和生产活动，包括开发地球物理成像技术，以提高生产率和降低储量估算风险。
- Keenan Hohol MA, JD, Director / 文学硕士、法学博士、董事 - Aftermath Silver
 - previous executive roles: General Counsel, Global Exploration, BHP Billiton; Global Head of Legal, Western Coal; Vice-President, Legal and General Counsel, Silver Standard Resources; General Counsel, Pan American Silver. / 曾经担任过的管理职务：必和必拓全球勘探部门总法律顾问、Western Coal的全球总法律顾问、Silver Standard Resources的法律总顾问、Pan American Silver的总法律顾问

Highly Experienced Management Team

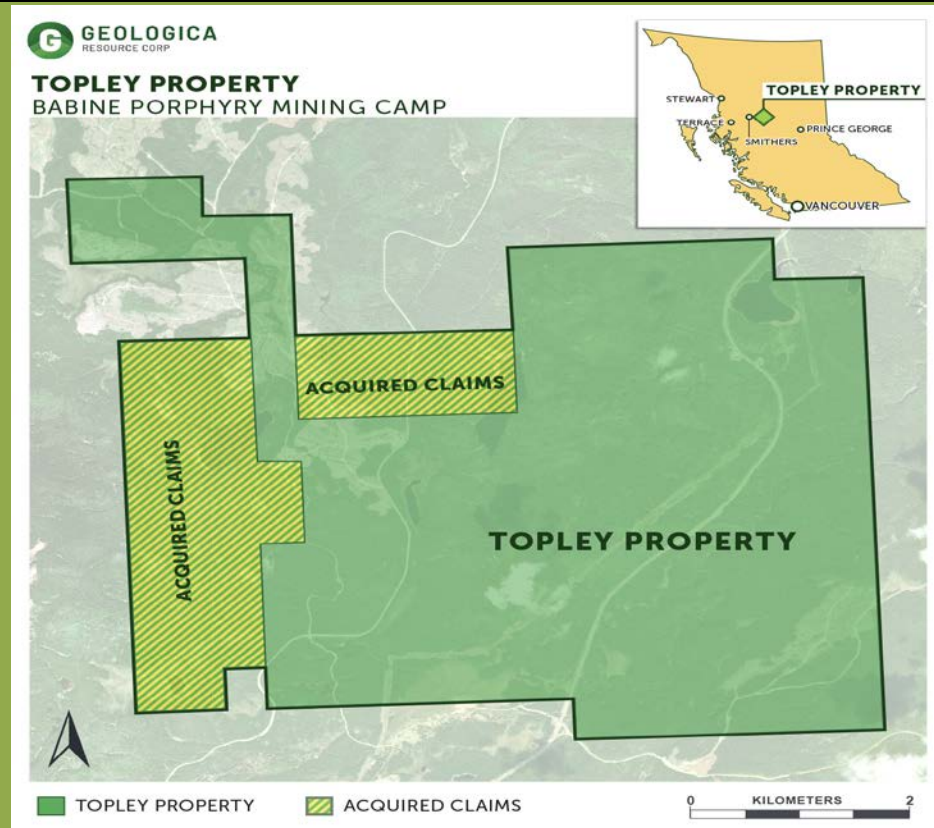
经验非常丰富的管理团队

- Douglas Unwin, B.Sc., MBA - CEO & President, Director / 理学学士、工商管理硕士 - 总裁兼首席执行官、董事
 - Lead the formation of biotech that sold for close to \$1 Billion. 30 years of entrepreneurial experience in operations, venture capital and corporate finance taking companies in highly regulated industries from pre start-up to listing on global public markets / 领导成立生物科技公司，最后以近\$10亿的价格被收购。在运营、风险投资和企业融资方面有30年的创业经验，带领监管非常严格行业的公司从初创企业发展到在全球公开市场上市
- Robert Charlton, CPA-CA, CFO, Director / 注册会计师、首席财务官、董事
 - Founder & Manager, Charlton and Company, Auditors and Tax Advisors with over 50 public mining company clients / Charlton and Company的创始人和经理，拥有50多个上市矿业公司客户的审计师和税务顾问

Advisors / 顾问

- Robert Boyd, P.Geo., F.G.A., President / 专业地质学家、F.G.A.、总裁 – Endurance Gold
 - 40+ years experience in exploration, executive-level management, corporate finance and corporate governance. / 在勘探、行政管理、财务和公司治理方面有40多年的经验
 - Previous executive roles: Athabasca Potash Corporation, acquired by BHP; Ashton Mining of Canada Inc.; acquired by Stornoway Diamonds; Vice President Exploration for Homestake Canada Limited / 曾在多家公司担任高管职务：Athabasca Potash Corporation，被必和必拓收购；Ashton Mining of Canada Inc.，被Stornoway Diamonds收购；在Homestake Canada Limited担任勘探副总裁
- Cozen O'Connor LLP – Lawyers / 律师事务所
- Sam S Mah Ltd. – Auditors / 审计事务所
- DeCoors Mining – Exploration / 勘探
 - Additional geology and mining expertise will be added in Namibia / 将在纳米比亚增加地质和采矿方面的专业知识

Topley Landing Project / Topley Landing项目



- Located in North Central, BC, 21 km south of previously producing Granisle mine / 位于加拿大卑诗省中西部，在之前生产的Granisle矿以南约21千米
- Road Accessible - Granisle Highway transects project / 进出道路 - Granisle公路穿过该项目
- Power line to Granisle transects the property / 通至Granisle 的电线穿过该项目区
- **Porphyry copper- molybdenite and/or volcanic massive sulphide (VMS) targets / 斑岩铜-钼和/或火山成因硫化物 (VMS)靶区**
- Historical exploration was directed towards porphyry copper mineralization located within the eastern property area. / 历史上的勘探主要针对项目区东部区域的斑岩铜矿化结构。

CONFIDENTIAL

Topley Landing Highlights / Topley Landing亮点

- Greenfield deposit for development of an ethical source, ESG-grade, low carbon footprint, high purity North America critical metals producer / 绿地矿床，用于发展成为一个来源合乎道德、ESG 级、低碳足迹、高纯度的北美关键金属生产矿
- Access to clean BC Hydro power / 使用卑诗省水电公司的清洁电力
- Secure and ethical supply source in mining friendly British Columbia, Canada, North America / 在北美洲加拿大矿业友好的卑诗省，安全且环保的供应来源
- Consultation with first nations ongoing / 正在与原住民协商
- Proximity to city, airport and international deep sea port / 临近城市、机场和国际深海港
- Property accessible by provincial highway and by 4 season gravel logging road / 可通过省级公路和全年通车的伐木公路抵达项目区
- On trend past producing mines include, the Granisle and Bell copper mines to the northeast and Huckleberry mine to the southwest / 与历史生产矿在同一趋势带上，包括东北方向的Granisle矿和Bell铜矿，西南方向的Huckleberry矿

CONFIDENTIAL



Granisle Highway through Topley Property / Granisle公路穿过Topley 项目区

CONFIDENTIAL

Property Ownership & Option / 项目区所有权与选择权

- Topley Property is made of the Topley Claims, Rooster Claims and TAC Claims / Topley 项目区由Topley矿权区、Rooster矿权区和TAC矿权区组成
- Option to earn 100% of Topley Claims / 可以选择挣得Topley矿权区100%的权益
 - \$55K due December 31, 2023, \$5K paid / \$5.5万，2023年12月31日到期，已支付\$5000
 - 1,000,000 common shares of Geologica over 4 years / 1,000,000股Geologica的普通股，为期4年
 - \$150K of exploration / \$15万的勘探费用
 - 2% NSR buydown to 1% for \$1,000,000 / 2%的NSR买断1%，价格为\$1,000,000
- Rooster Claims / Rooster矿权区
 - 100% owned by Geologica / Geologica 100%拥有
- Purchase and Sale Agreement for TAC Claims / TAC矿权区的买卖协议
 - 100% owned by Geologica / Geologica 100%拥有

CONFIDENTIAL

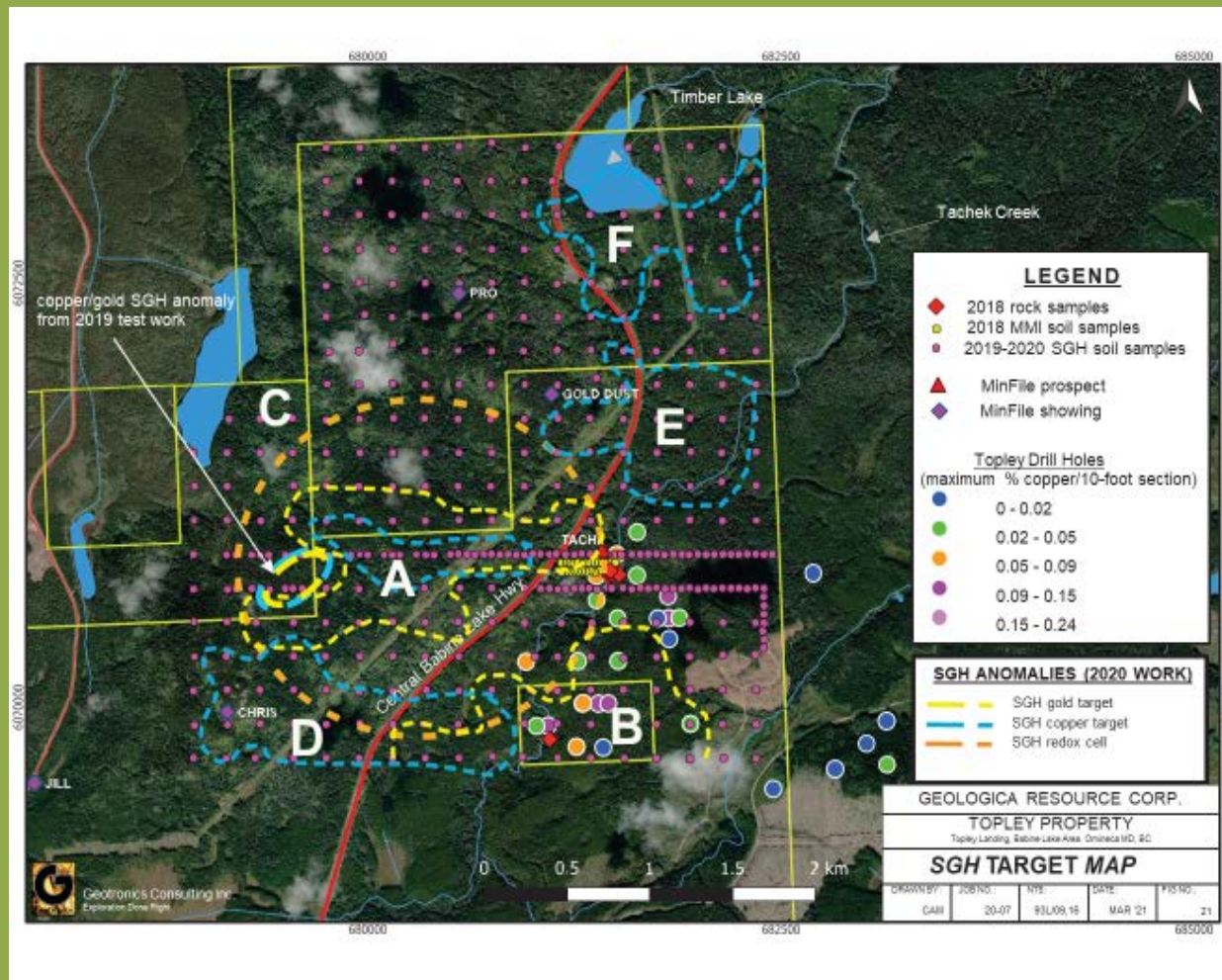
Exploration Results / 勘探结果 – 2020*

- October 2020, 515 soil samples were collected / 2020年10月，采集了515份土壤样本
- 305 samples sent for Spatiotemporal Geochemical Hydrocarbon (SGH) analysis / 已送出305份样本进行时空地球化学碳氢化合物（SGH）分析
 - **Highlighted a potential kilometer-scale VMS target** located in the southwest section of the sample grid plus 6 additional possible targets for continued exploration. / **确定了**位于取样网格西南段的一个潜在的公里规模的**VMS靶区**，以及另外6个可能的靶区，有待继续勘探。
 - Identified within the center of this potential VMS Target 2 additional high priority exploration targets. **This is suggestive of an exploration target reflecting a VMS-type deposit that contains significant mineralization.** / 在这个潜在的VMS靶区的中心，确定了另外2个高度优先勘探靶区。说明这是一个可能蕴藏大量矿化结构的**VMS型矿床的勘探靶区**。
 - This thesis is supported by historical airborne magnetic surveys, which show the VMS anomaly occurs within a magnetic high which is likely due to the Takla volcanics and a northwest trending magnetic low up to the Granisle and Bell mine deposits. / 这一论点得到了历史航空磁力勘测的支持，表明**VMS异常**发生在一个磁力高点内，这可能是由于Takla火山和西北方向的趋势磁力低点，一直延伸到Granisle矿床。

* NI 43-101 TECHNICAL REPORT on the TOPLEY PROPERTY Topley Landing, Babine Lake Area, Omineca MD, BC, May 7, 2021 / NI 43-101关于TOPLEY项目区的技术报告，卑诗省Omineca矿业部门Babine Lake地区Topley Landing, 2021年5月7日

CONFIDENTIAL

Geochemical Target Map* / 地球化学靶区地图*

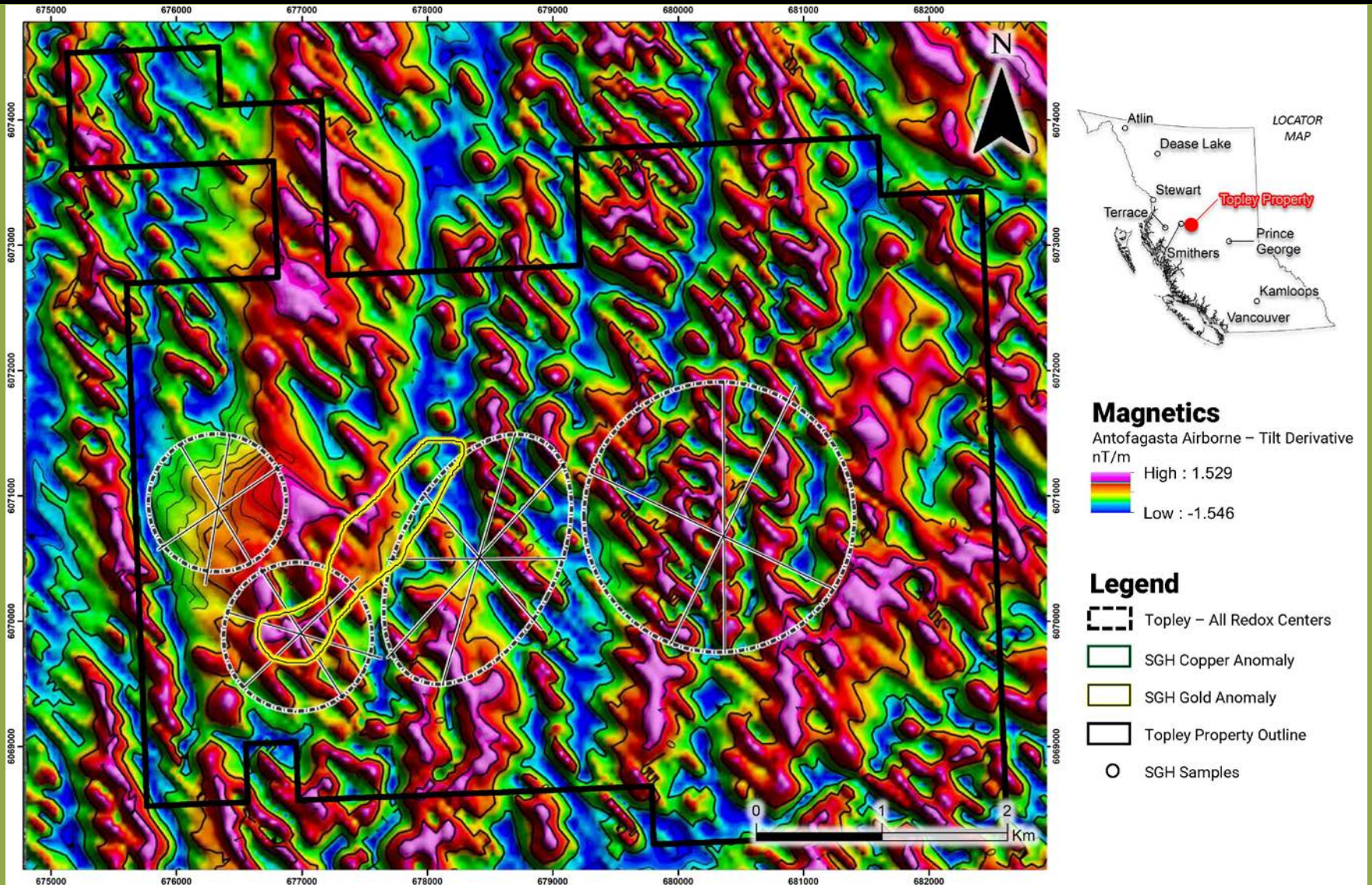


SGH is not NI 43-101 compliant due to its proprietary nature, but may be used as an exploration tool by the Company. The results of the SGH survey should not be relied on. "it is uncertain if further exploration will result in the target being delineated as a mineral resource" / 由于专有性质，SGH无法达到NI 43-101标准，但本公司可将其作为一种勘探工具使用，不应依赖SGH勘查的结果。“不确定进一步勘探是否会导致该靶区被划定为矿产资源”

* NI 43-101 TECHNICAL REPORT on the TOPLEY PROPERTY Topley Landing, Babine Lake Area, Omineca MD, BC with the effective date of May 7, 2021 / * NI 43-101关于TOPLEY项目区的技术报告，卑诗省Omneca矿业部门Babine Lake地区Topley Landing，生效日期2021年5月7日

CONFIDENTIAL

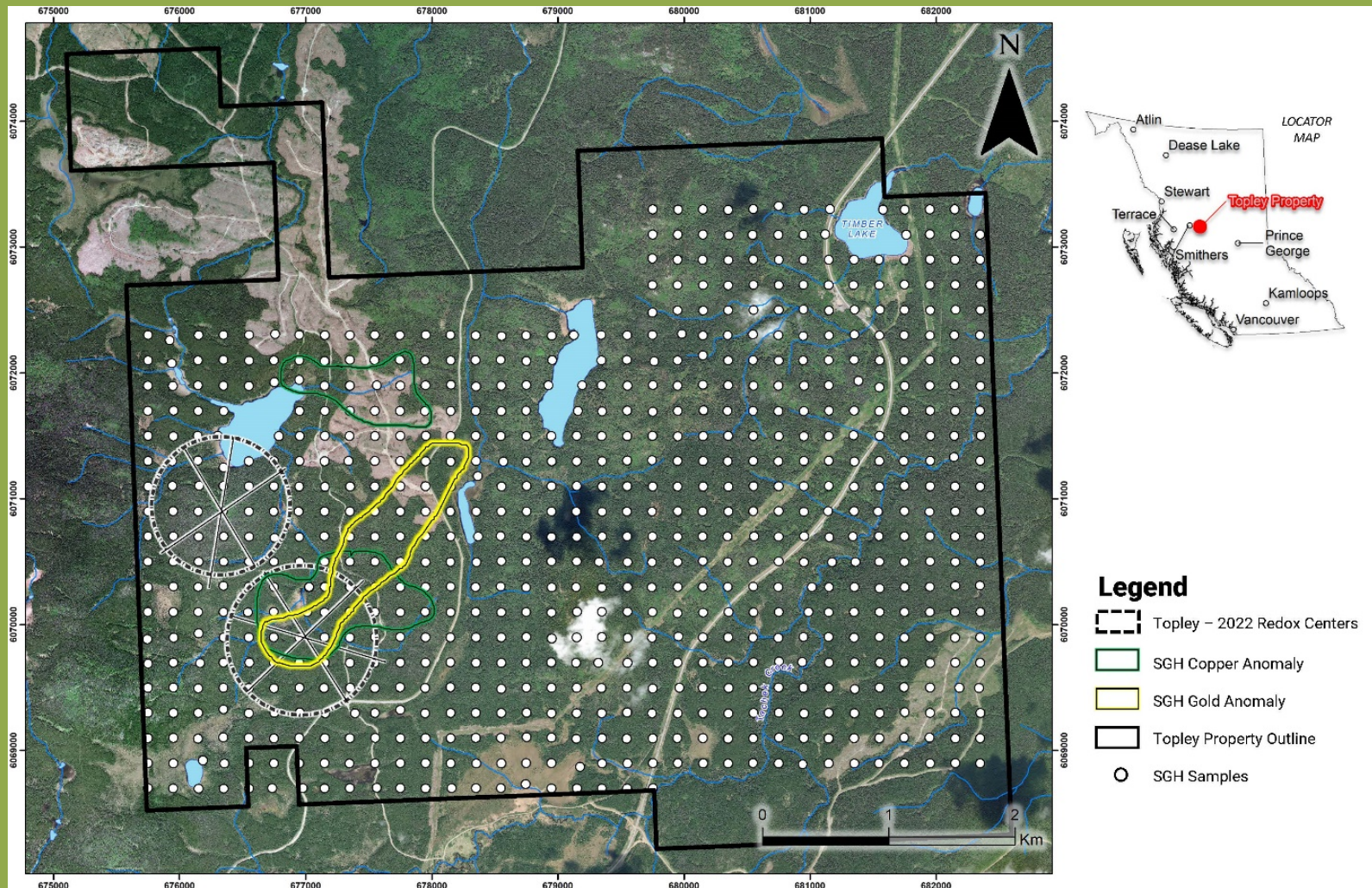
SGH 2022 - Magnetics Overlay / 磁性叠加



SGH survey has identified 3 redox centre and copper and gold anomalies / SGH勘测已经确定了三个氧化还原中心和铜与黄金异常区

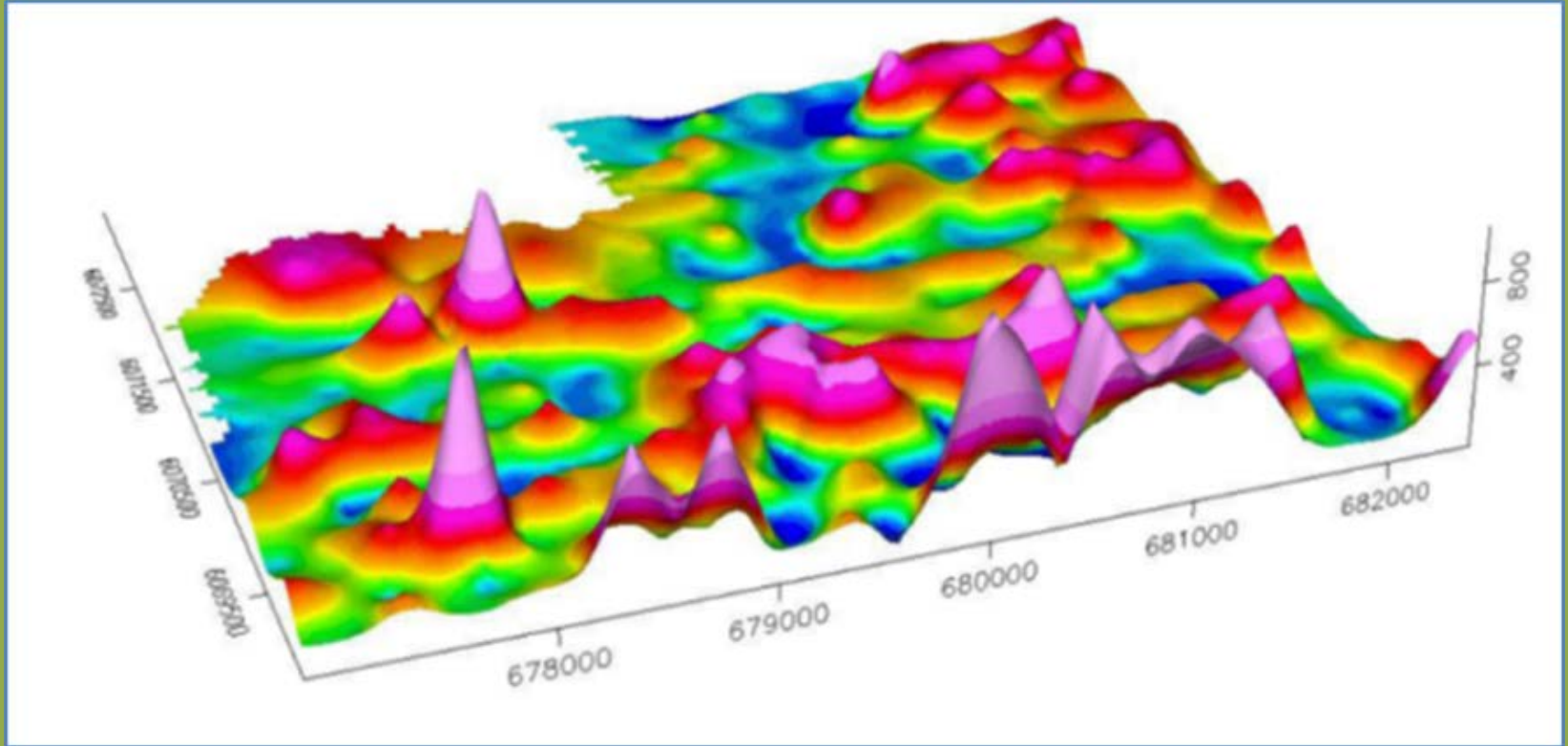
CONFIDENTIAL

SGH Grid and Results / SGH网格与结果



CONFIDENTIAL

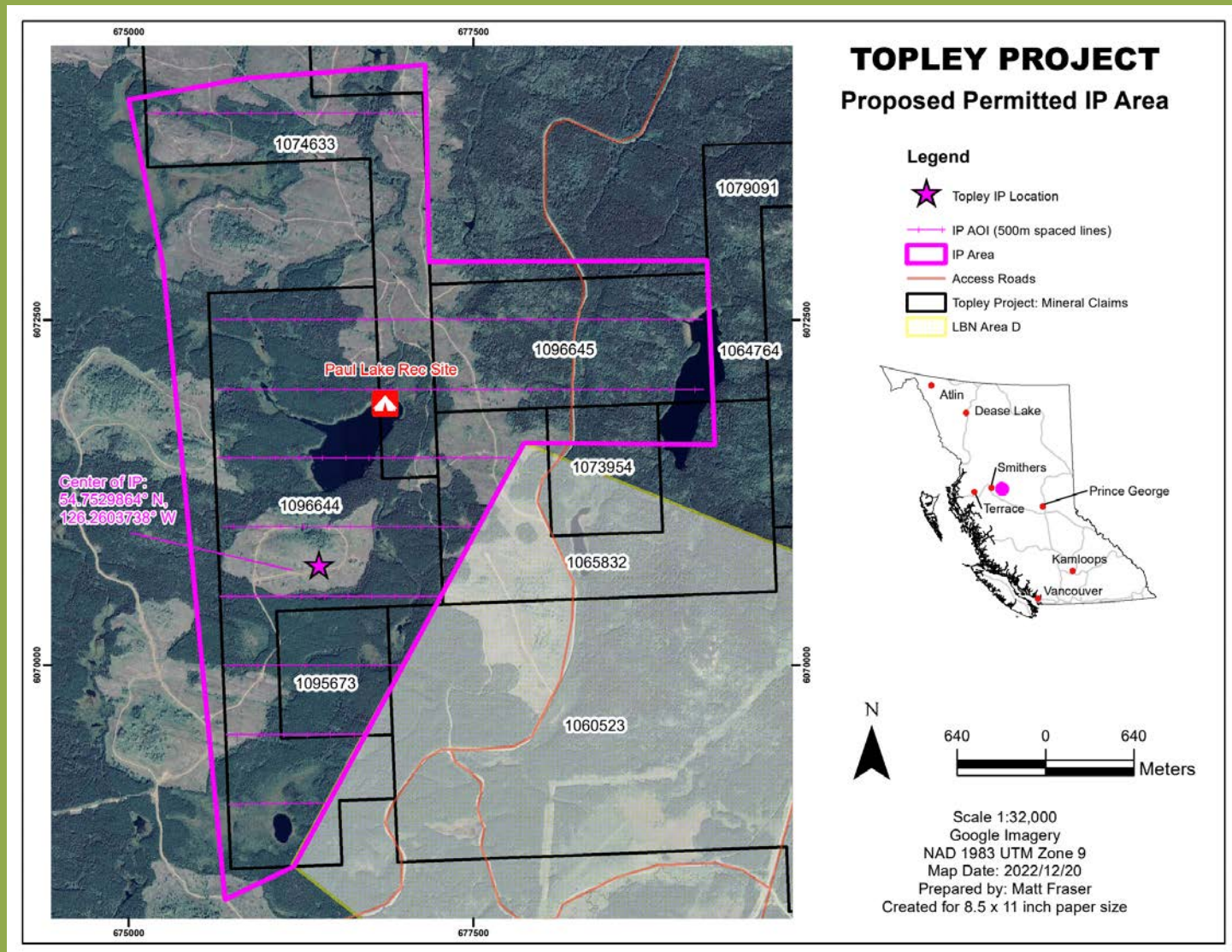
Copper Rabbit Ear Anomaly / 铜兔耳异常区



SGH results showing western copper anomaly similar to Mount Milligan (reserves 902 million pounds) /SGH结果显示西部铜异常区类似于Mount Milligan（储量为9.02亿磅）

CONFIDENTIAL

Induced Polarization (IP) Survey / 激发极化勘测



CONFIDENTIAL

Investment Structure / 投资结构

- Geologica Resource Corp.
 - CSE: GRCM, Frankfurt: 862
 - Only 24,681,203 shares outstanding
 - 只有24,681,203股流通股
 - 27,503,903 shares fully diluted
 - 完全摊薄后有27,503,903股



2018 sample # 3157 – 2.53% Copper /
2018年的一份样本#3157—铜品位2.53%

THANK-YOU 谢谢

- Doug Unwin, President & CEO / 总裁兼首席执行官
 - (604) 762-5355
 - Doug.Unwin@Geologicaresource.com

