



FOCUSED ON DISCOVERY

专注于资源发现

COPPER & GOLD EXPLORATION IN EASTERN AUSTRALIA

在澳大利亚东部地区进行铜与黄金勘探

CSE: **AUCU** | OTCQB: **AUCUF**



CAUTIONARY NOTE REGARDING FORWARD-LOOKING INFORMATION

关于前瞻性信息的警示性说明

Certain disclosure may constitute "forward-looking statements" within the meaning of Canadian securities legislation. In making the forward-looking statements, the Company has applied certain factors and assumptions that the Company believes are reasonable. However, the forward-looking statements are subject to numerous risks, uncertainties and other factors that may cause future results to differ materially from those expressed or implied in such forward-looking statements. Such uncertainties and risks are described from time to time in the Company's filings with the appropriate securities commissions, and may include, among others, market conditions, delays in obtaining or failure to obtain required regulatory approvals or financing, fluctuating metal prices, the possibility of project cost overruns, mechanical failure, unavailability of parts and supplies, labour disturbances, interruption in transportation or utilities, adverse weather conditions, and unanticipated costs and expenses, variations in the cost of energy or materials or supplies or environmental impacts on operations. There can be no assurance that such statements will prove to be accurate, and actual results and future events could differ materially from those anticipated in such statements. Readers are cautioned not to place undue reliance on forward-looking statements. The Company does not intend, and expressly disclaims any intention or obligation to, update or revise any forward-looking statements whether as a result of new information, future events or otherwise, except as required by law.

The scientific and technical information has been reviewed and approved by Mr. Carl Swensson (FAusIMM) a "Qualified Person" ("QP") as defined in National Instrument 43-101 – Standards of Disclosure for Mineral Projects.

1 EXPLORING FOR COPPER & GOLD / 勘探铜和黄金

- Drilling for Tier-I Cu-Au porphyry deposits in New South Wales / 在新南威尔士州的一级铜-金斑岩矿床进行钻探

2 PREMIER MINING JURISDICTION / 非常优秀的矿业辖区

- Exploring mining-friendly New South Wales / 在矿业友好的新南威尔士州探矿

3 100% PROJECT OWNERSHIP / 100%的项目所有权

- District-scale land position in New South Wales – over 7,000 km² of licenses / 地区规模的土地-在新南威尔士州有7000多平方公里的许可区

4 ANGLOGOLD ASHANTI EXPLORATION AGREEMENT / 与ANGLOGOLD ASHANTI达成勘探协议

- Multi-year, large-scale exploration alliance to explore for copper & gold / 达成多年的大规模勘探联盟，共同勘探铜和黄金

5 INNOVATIVE EXPLORATION STRATEGY / 创新的勘探战略

- Aggressively exploring large, previously un-drilled targets undercover / 积极钻探测试以前未曾钻探过的大规模隐秘靶区

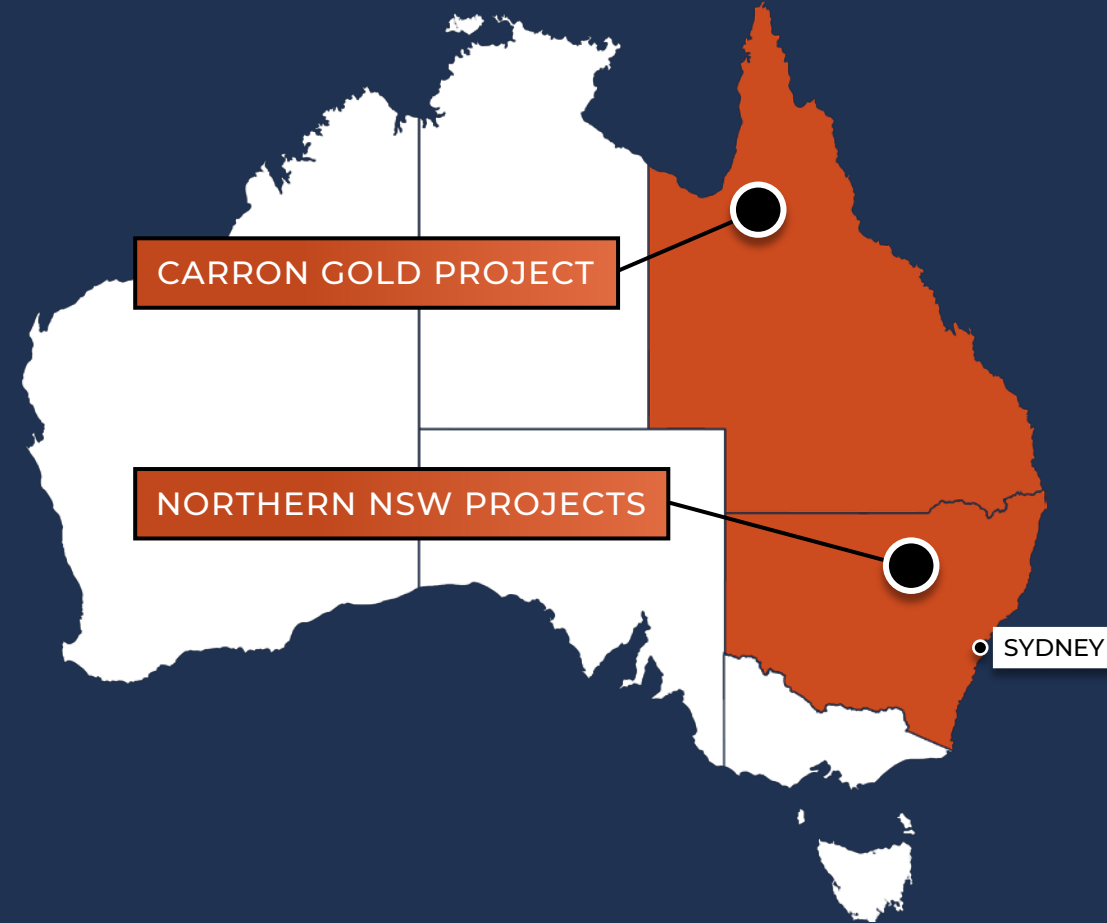
Inflection is comprised of a highly accomplished technical team with an outstanding track record of discovery. / Inflection由一支极其成功的技术团队组成，具有出色的矿山发现履历。

NORTHERN NSW PROJECTS / 新南威尔士北区项目

- Targeting large, undercover porphyry copper-gold deposits
Systematically drilling large portfolio of 100% owned targets / 目标是大型隐蔽斑岩铜金矿床，系统地钻探100%拥有的大规模靶区组合
- Exploration funded by AngloGold Ashanti / AngloGold Ashanti提供勘探资金

CARRON GOLD PROJECT / CARRON黄金项目

- Targeting high-grade orogenic lode gold veins / 目标是高品位造山金矿脉
- Located along trend from the historic Croydon Goldfields in Queensland. / 位于昆士兰州历史的Croydon金矿区趋势带上



SHARE STRUCTURE / 股权结构

Outstanding shares:/ 发行在外股票 **95,032,670**

Warrants: / 认股权证: **20,063,300 ***

Options: / 期权: **8,350,000 ***

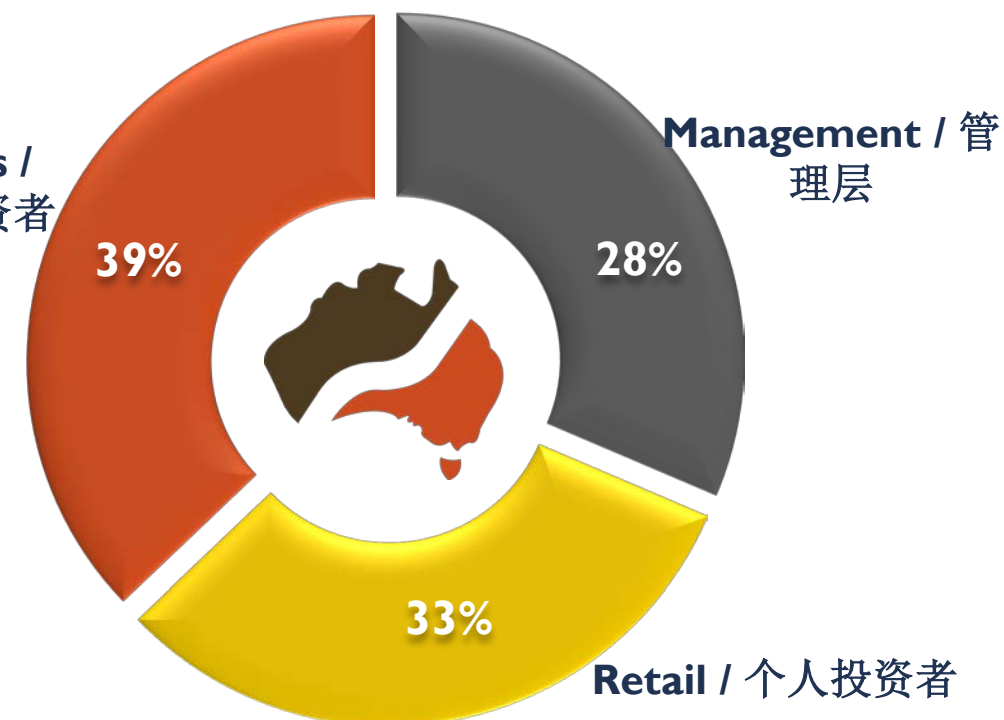
- 10 largest shareholders own ~63% / 十大股东持有约63%股权
- Analyst coverage: / 分析师覆盖:
 - Agentis Capital (Michael Gray)
 - Exploration Insights (Joe Mazumdar)

SHARE OWNERSHIP / 所有权结构

CRESCAT CAPITAL
VALUE-DRIVEN PERFORMANCE

RESOURCE*
CAPITAL FUNDS
OPPORTUNITIES

**Institutions &
HNW Investors /
机构与高净值投资者**



* See website for the full breakdown warrants & options / 请登录网站了解认股权证和期权的详细信息

MANAGEMENT TEAM / 管理团队

Wendell Zerb

BSc. P.Geol / 理学学士、专业地质学家
Chairman / 董事会主席

Alistair Waddell

BSc.(Hons.) MAusIMM / 理学(荣誉) 学士、
澳大拉西亚矿业与冶金学会正式会员
President, CEO & Director /
总裁、首席执行官兼董事

Doug Menzies

BSc, MAIG RPGeo / 理学学士、
MAIG、专业地质学家
VP Exploration / 勘探副总裁

Philip Yee

CPA, MBA / 注册会计师、工商管理硕士
Chief Financial Officer / 首席财务官

Dr. Stuart Smith

BSc. PhD / 理学学士、博士
Non-Exec. Director / 非执行董事

Tero Kosonen

MSc. / 理学硕士
Non-Exec. Director / 非执行董事

Cecil R. Bond

CPA, CA / 注册会计师
Non-Exec. Director / 非执行董事

TECHNICAL ADVISORS / 技术顾问

Dr. Douglas Haynes

PhD, AIG / 博士、AIG

Dr. Alan Wilson

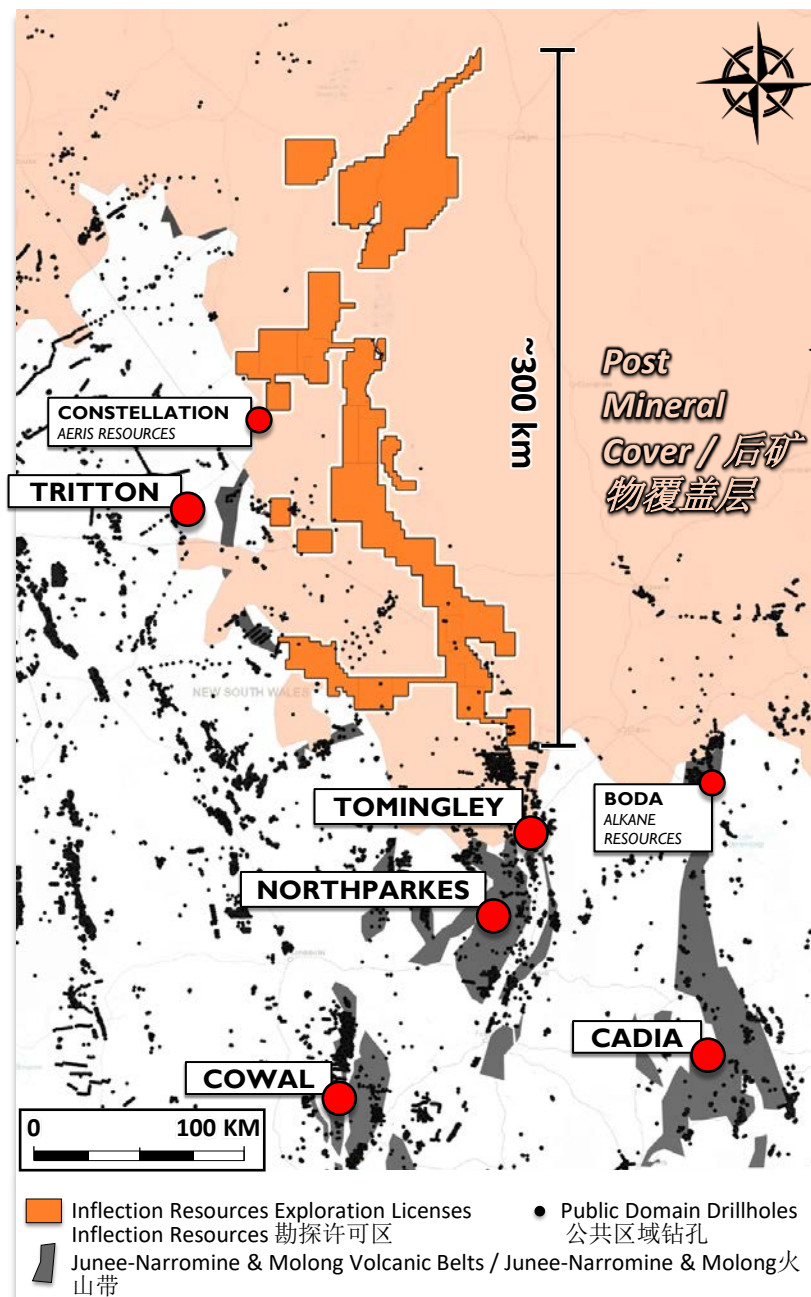
PhD, Cgeol / 博士、专业地质学家



WHY NSW & THE MACQUARIE ARC?

为什么看重新南威尔士州和麦格里弧？

- Australia's foremost copper-gold porphyry belt. / 澳大利亚最重要的铜-金斑岩成矿带
- Hosts several world-class mines including Cadia, Cowl & Northparkes. / 拥有多个世界级矿山，包括Cadia, Cowl和Northparkes
- Northern extension of belt is covered with veneer of sediments. / 成矿带的北部延伸段被一层沉积物覆盖



	CADIA
	COWAL
	NORTH PARKES
	TRITTON CONSTELLATION
	TOMINGLEY BODA

EXCELLENT INFRASTRUCTURE

良好的基础设施

Mining-friendly jurisdiction with major mining operations nearby.

/ 矿业友好辖区，临近大型矿产运营项目

Excellent infrastructure; paved roads, rail lines, airports, power etc.

/ 良好的基础设施；铺设好的公路、铁路线、机场、电力等

Projects located on barren bushland or large commercial farms.

/ 项目位于贫瘠的原始林区或大型经济农场

Cost effective exploration – no need for helicopters or remote camps.

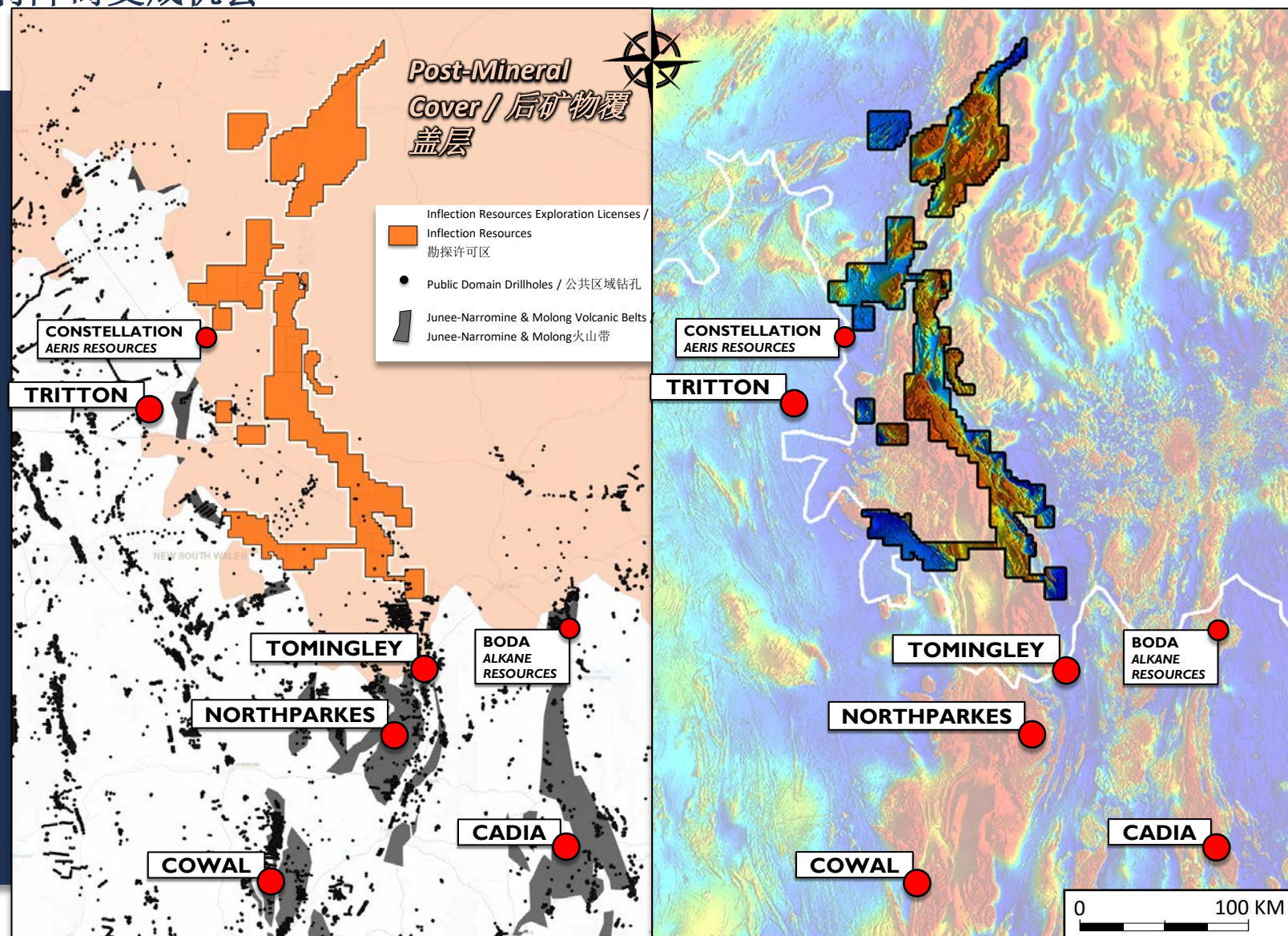
/ 成本效益高的勘探-不需要直升机或去偏远的营地



POST-MINERAL COVER / 后矿物覆盖层

Turning an obstacle into opportunity / 将障碍变成机会

- Exploring concealed extension of Macquarie Arc under veneer of post-mineral sedimentary cover. / 探寻麦格里弧在后矿物沉积覆盖层下的隐蔽延伸段
- Northern extension of belt relatively underexplored. / 成矿带北部延伸段相对勘探不足
- Targeting large-scale deposits analogous to those located in the southern part of the belt. / 寻找类似于成矿带南部矿床的大规模矿床
- Initial targets generated by interpreting regional airborne geophysical data. / 通过解读地区航空地球物理勘测数据，确定靶区



NSW EXPLORATION STRATEGY / 新南威尔士州勘探策略

- Portfolio approach with multiple targets / 资产组合的方式，有多个靶区
- Previously undrilled Cu-Au targets / 之前未钻探的铜-金靶区
- Targets have scale potential for Tier-I discovery / 靶区有成为一级发现区的规模潜力
- Drill-test quickly and cost effectively / 钻探测试快速且具有成本效益
- Walk away if key target attributes absent / 如果关键的靶区特征缺失，就放弃



NSW EXPLORATION PORTFOLIO

新南威尔士州的勘探项目组合

Two principal exploration initiatives in NSW

/ 新南威尔士州两个最重要的勘探活动

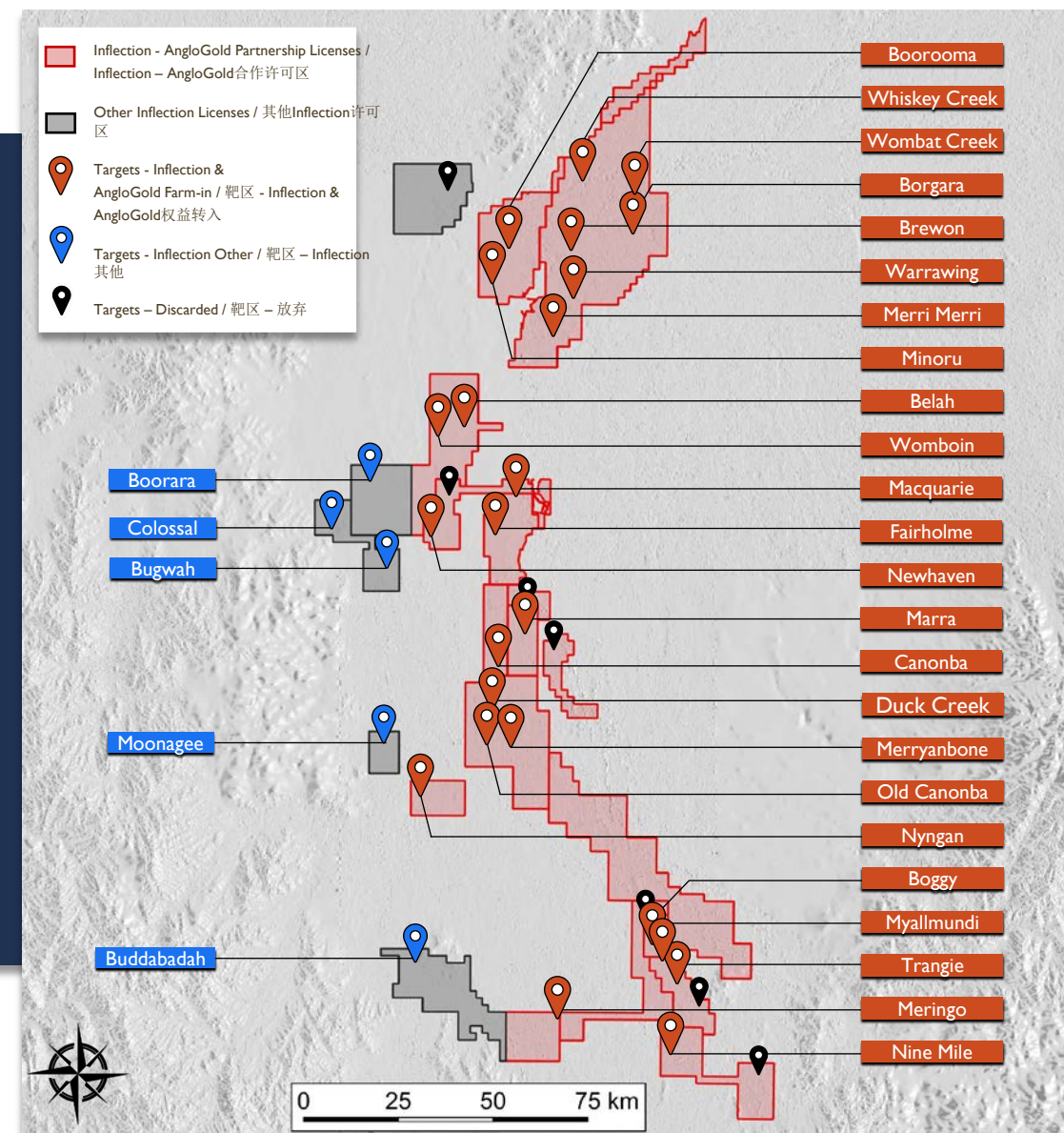
All licenses 100% owned by Inflection. / Inflection 100%拥有所有许可区

AngloGold Ashanti Agreement Targets / 与AngloGold Ashanti达成协议的靶区

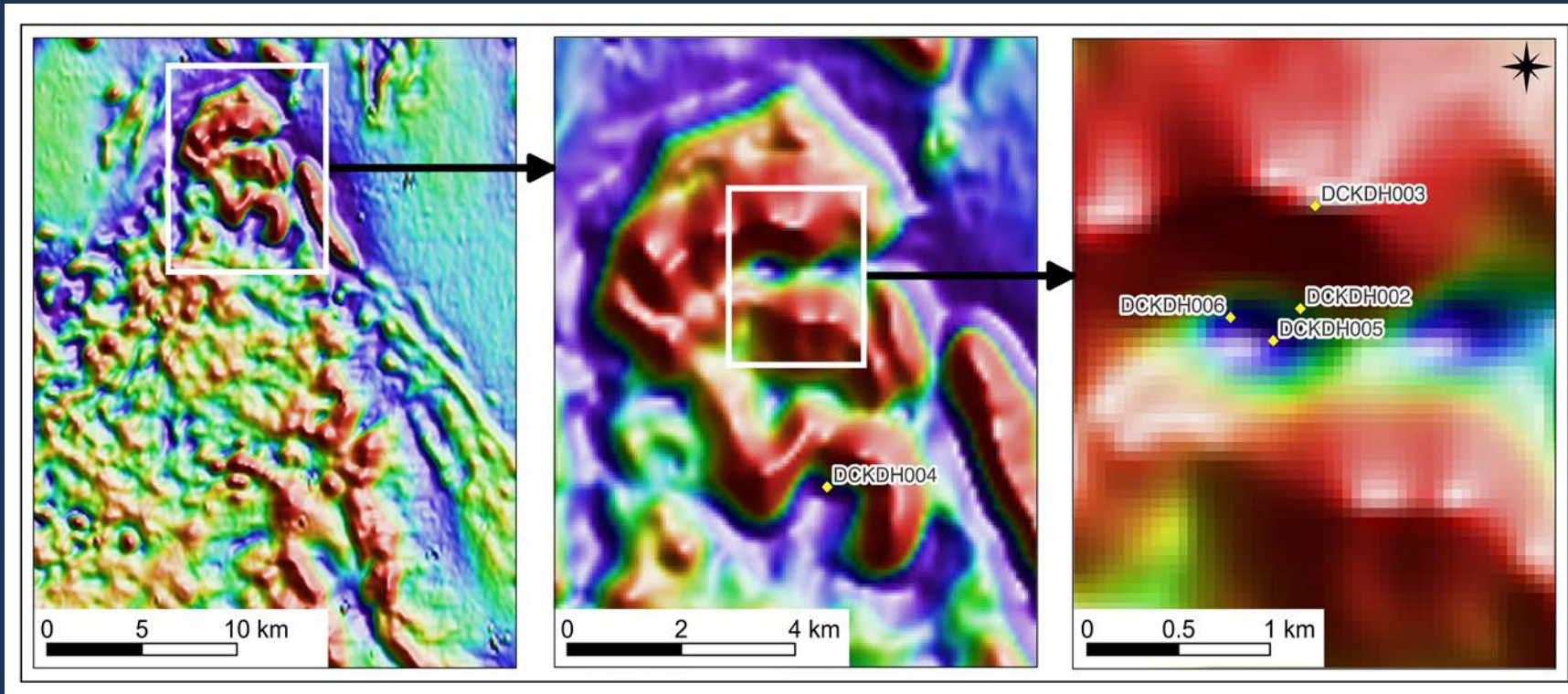
- Targeting large, alkalic porphyry copper-gold deposits. / 目标是大规模碱性铜-金斑岩矿床
- Aggressively drilling large portfolio of targets. / 积极钻探大量靶区
- Exploration fully funded by AngloGold Ashanti. / 勘探完全由AngloGold Ashanti提供资金支持
- ~35,000 metre drill program. / 约3.5万米钻探活动

Other Inflection Targets / 其他Inflection靶区

- Variety of copper-gold exploration targets. / 各种铜-金勘探靶区



AEROMAGNETIC RTP / 航空磁测 RTP



- High amplitude magnetic patterns with multiple drill targets
- 具有多个钻探靶区的高振幅磁场模式

DRILL HOLE DCKDH002 钻孔DCKDH002



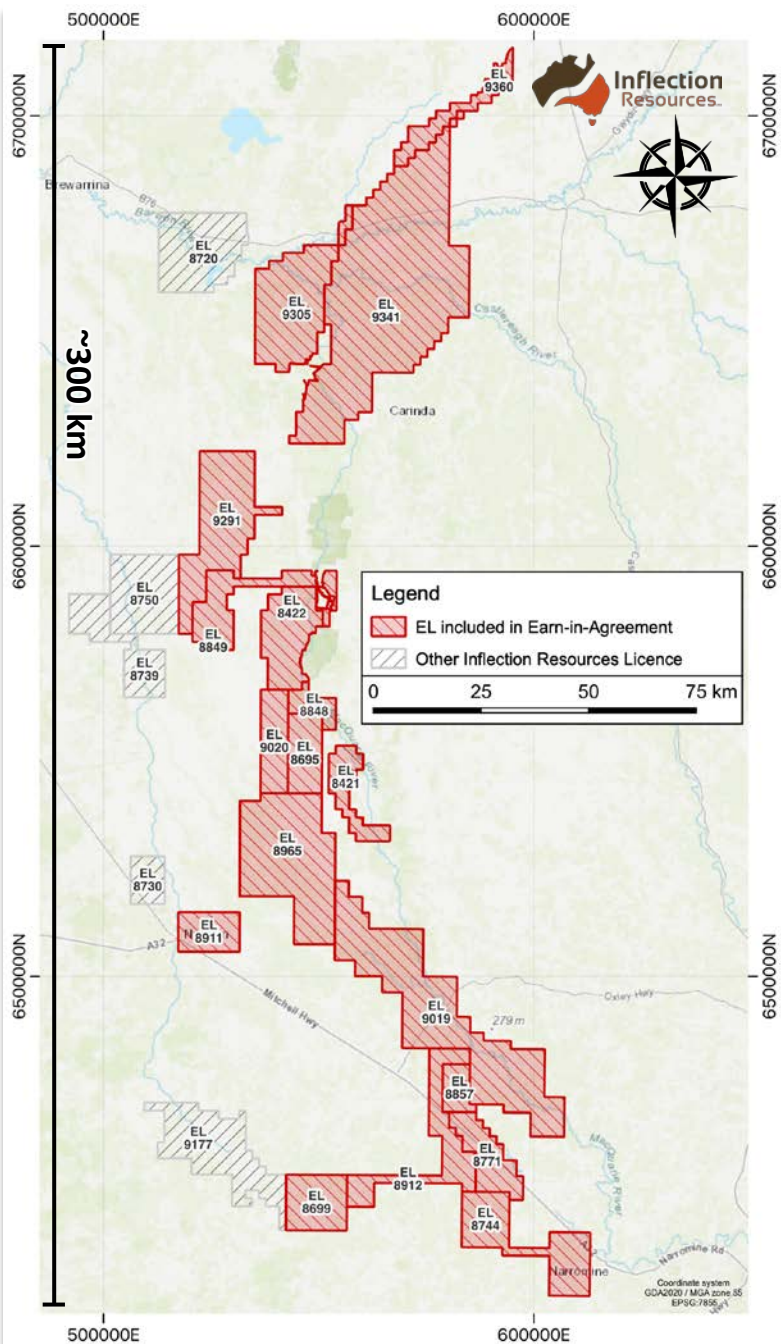
(378.10m)

(389.40m)

ANGLOGOLD ASHANTI AGREEMENT / 与ANGLOGOLD ASHANTI的协议

- Multi-year Agreement with AngloGold across group of copper-gold projects in New South Wales. / 与AngloGold针对新南威尔士州的一系列铜-金项目达成多年的协议
- AngloGold can earn a 65% interest individually in up to five projects for cumulative earn-in expenditures of up to AUD\$145MM / AngloGold累计支出最多可达 1.45 亿澳元后，最多可在五个项目中单独获得65% 的权益
- To earn 75% in each project AngloGold is required to deliver a Pre-Feasibility Study (to include minimum 2M oz Au or Au-Cu M+I Resources) and cede a 2% or 1% NSR royalty to Inflection. / 为了获得每个项目75%的权益，AngloGold必须完成预可行性研究（包括测定+指示资源量最低200万盎司黄金或金-铜），给予Inflection 2%或1%净熔炼权利金。
- Inflection is operating project for a 10% management fee. / Inflection正在运营项目，收取10%管理费

Phase #	Project Specific Expenditures (AUD\$)					AngloGold Interest (%)	Max. time for each Stage
Phase I	\$10M					0%	36 Months
Phase II	Project 1	Project 2	Project 3	Project 4	Project 5	51%	36 Months
	\$7M	\$7M	\$7M	\$7M	\$7M		
Phase III	+ \$20M	+ \$20M	+ \$20M	+ \$20M	\$20M	65%	24 Months
Phase IV	Completion of PFS	Completion of PFS	Completion of PFS	Completion of PFS	Completion of PFS	75%	36 Months



EXPLORING FOR COPPER & GOLD / 勘探铜和黄金

- Drilling for Tier-I Cu-Au porphyry deposits in NSW & high-grade orogenic lode gold deposits in Queensland / 钻探新南威尔士州的一级铜-金斑岩矿床以及昆士兰州高品位造山矿脉黄金矿床

ANGLOGOLD ASHANTI AGREEMENT / 与ANGLOGOLD ASHANTI 达成协议

- Fully-funded, large-scale, multi-year exploration alliance in NSW / 资金充足，在新南威尔士州达成大规模、多年勘探联盟

100% PROJECT OWNERSHIP / 100%拥有项目

- District scale land positions – over 7,000 km² of licenses in NSW / 区域规模土地 – 新南威尔士州超过7000平方公里的许可区

AGGRESSIVELY DRILLING / 积极钻探

- Drilling large portfolio of previously untested targets in NSW / 在新南威尔士州钻探大规模的之前未测试靶区组合

CSE: **AUCU** | OTCQB: **AUCUF** | FSE: **5VJ**

Alistair Waddell

President & CEO / 总裁兼首席执行官
alistair@inflectionresources.com

Brennan Zerb

Investor Relations Manager / 投资者关系经理
+1 778-867-5016
bzerb@inflectionresources.com

[Inflection Resources](#)



[Inflection Resources](#)



[InflectionAUCU](#)



www.inflectionresources.com