



Renforth Resources

Battery Metals backed with Gold

有黄金支持的电池金属开发

October 2023 / 2023年10月

CSE: **RFR**
OTCQB: **RFHRF**

Cautions and Notes to the Reader / 致读者的注意事项与说明

Please be aware that you are reading a document produced by Renforth Resources, regarding the assets and outlook of Renforth Resources.

This is not an impartial document, you should be prepared to do your own due diligence and form your own opinion regarding the information contained herein.

Statements within this document may be considered “forward looking statements”. They are presented accurately but are based upon assumptions, expectations and things which may not have occurred yet, or may not occur. As forward looking statements they cannot be considered, or relied upon, as fact.

This document is not a solicitation of any kind. Renforth is publicly traded and offers this document for informational purposes to the public. You should always seek financial advice should you require it, Renforth is not licensed to deliver financial advice in any jurisdiction.

Technical information in this document is derived from publicly available information, including press releases. It has been reviewed for accuracy by a “Qualified Person” as defined by National Instrument 43-101.

Renforth has made use of third party information in this document, footnoted accordingly, derived from publications and websites. Renforth is relying on the accuracy of this information as presented and makes no warranties or guarantees regarding it.

Renforth would like to acknowledge the following;

- 1 - Our corporate office is located within the City of Pickering, Ontario which resides on land within the Treaty and traditional territory of the Mississaugas of Scugog Island First Nation and Williams Treaties signatories of the Mississauga and Chippewa Nations. Pickering is also home to many Indigenous persons and communities who represent other diverse, distinct, and autonomous Indigenous nations
- 2 - Our Surimeau and Parbec properties are located within the municipal boundaries of Rouyn-Noranda and Val d'Or Quebec, within Treaty 9 and the traditional lands of the Conseil de la Première Nation Abitibiwinini, the Algonquins of Pikogan
- 3 -Our Nixon-Bartleman project is located west of Timmins, Ontario, within Treaty 9 and the traditional lands of many First Nations. These acknowledgements are offered in the spirit of reconciliation and in recognition of the history and living culture of Canada's First Nations people

Who is **Renforth**? / **Renforth**介绍

We are a publicly traded junior exploration company offering our shareholders a unique commodity exposure mix at the beginning of the value cycle with significant blue sky in our **proven assets** / 我们是一家公开上市的初级勘探公司，为我们的股东提供一个投资大宗商品的独特机会，既可以在价值周期的初期进入，又可以享受我们**成熟资产**的蓝天发展潜力

Renforth Resources participates in the development of the energy metals market in Ontario and Quebec through our **critical and strategic metals** advanced and early stage exploration assets, however, **Renforth** is insulated from the growing pains and commodity risk of this market by our 100% owned **gold deposit**, which we continue to expand. /

Renforth Resources通过我们的**关键金属和战略金属**高级和早期勘探资产，参与了安大略省和魁北克省能源金属市场的发展，但是，**Renforth Resources**通过我们**100%拥有的黄金矿床**（我们将继续扩张该矿床），避免了这一市场的成长之痛和大宗商品风险

Key Assets, Fantastic Logistics NW Quebec / 关键资产，极好的物流条件，魁北克省西北部

Secure Low Cost Setting with Large Scale Mineralization / 安全、低成本的环境，拥有大规模矿化结构

Nickel, Zinc, Cobalt, Copper, Gold / 镍、锌、钴、铜、黄金

-Large land position in the under explored Pontiac geological province, south of the Cadillac Break, first mover tied up all historic base metal showings / 在Cadillac断裂带以南未被充分勘探的Pontiac地质区的大片土地，率先将所有历史的基本金属表象区整合起来

-Beside Canada's largest open pit gold mine in a mature mining camp. A 4km long open pit next door sets a good precedent for Surimeau's surface mineralization. / 毗邻加拿大最大的露天金矿，位于一个成熟的采矿营地。旁边一个4公里长的露天矿为Surimeau的地表矿化结构创造了良好的先例

-Quebec is a secure, friendly, Top 10 in the world mining jurisdiction / 魁北克省是一个安全、矿业友好、世界排名前十的矿业辖区

-Road Access via local and national roads reduces carbon footprint / 通过地方和国家级公路进入，减少碳足迹

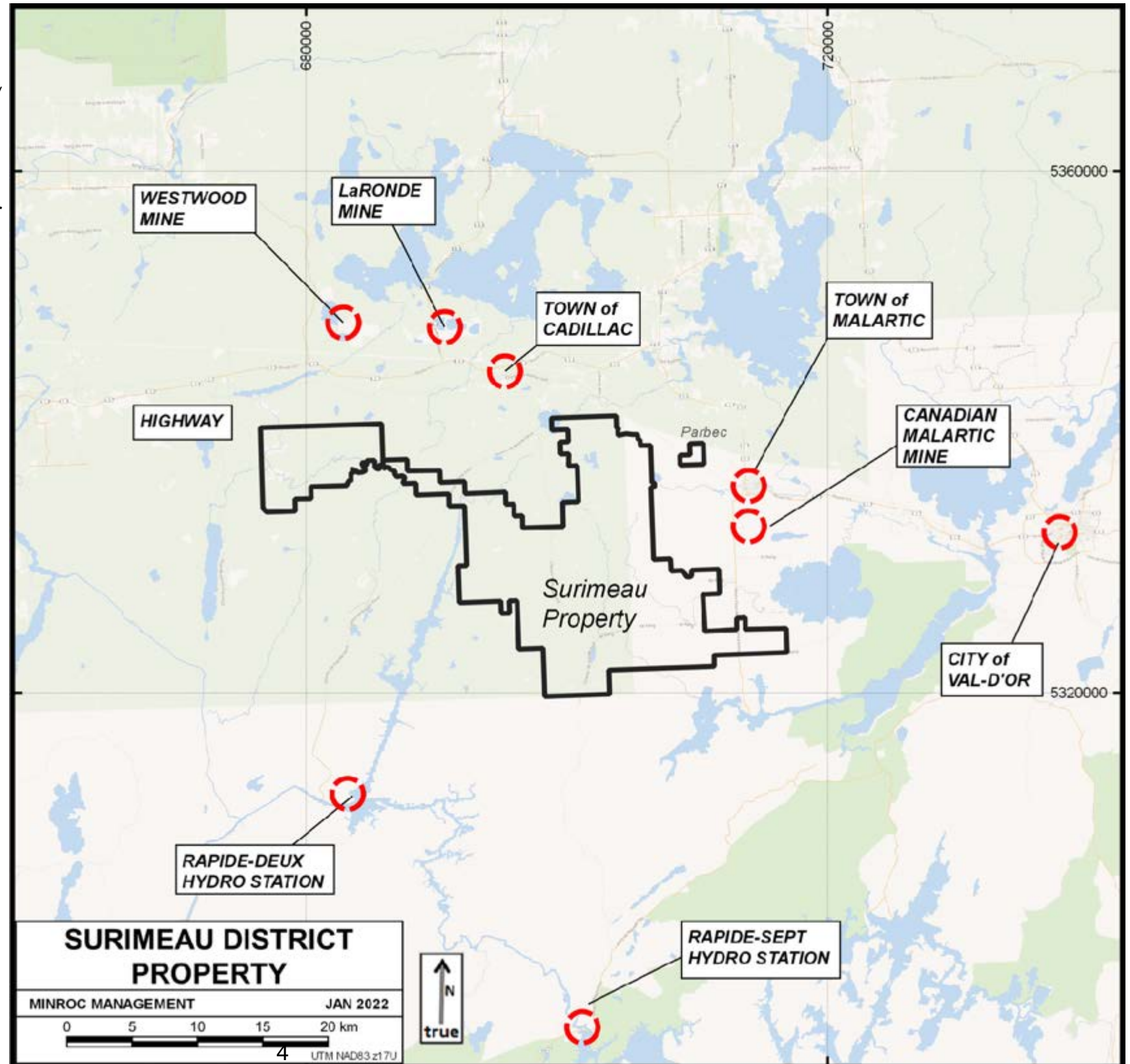
-Hydro Electric Power Lines on property, green and cheap electricity, reduces carbon footprint / 项目区上的水电线路，绿色和廉价的电力，减少碳足迹

-Largest Property Holder in the Cadillac Pontiac Lithium Battery Camp with proven surface polymetallic battery mineralization / Cadillac Pontiac 锂电池营地内最大的项目区持有者，拥有已证实的地表多金属电池矿化结构

-Canada's only copper/nickel smelter 1 hour away, Glencore's Horne Smelter / 距离加拿大唯一的铜/镍冶炼厂 - Glencore的Horne冶炼厂一小时路程

-Entire property uninhabited / 整个项目区无人居住

-Potential Scale (~29km mineralized strike and growing) of surface mineralization delivers large scale open pit potential, offering low cost of production in the future / 潜在的地表矿化结构规模（约29公里的矿化走向并不断发展）提供了大规模的露天开采潜力，未来有望低成本生产

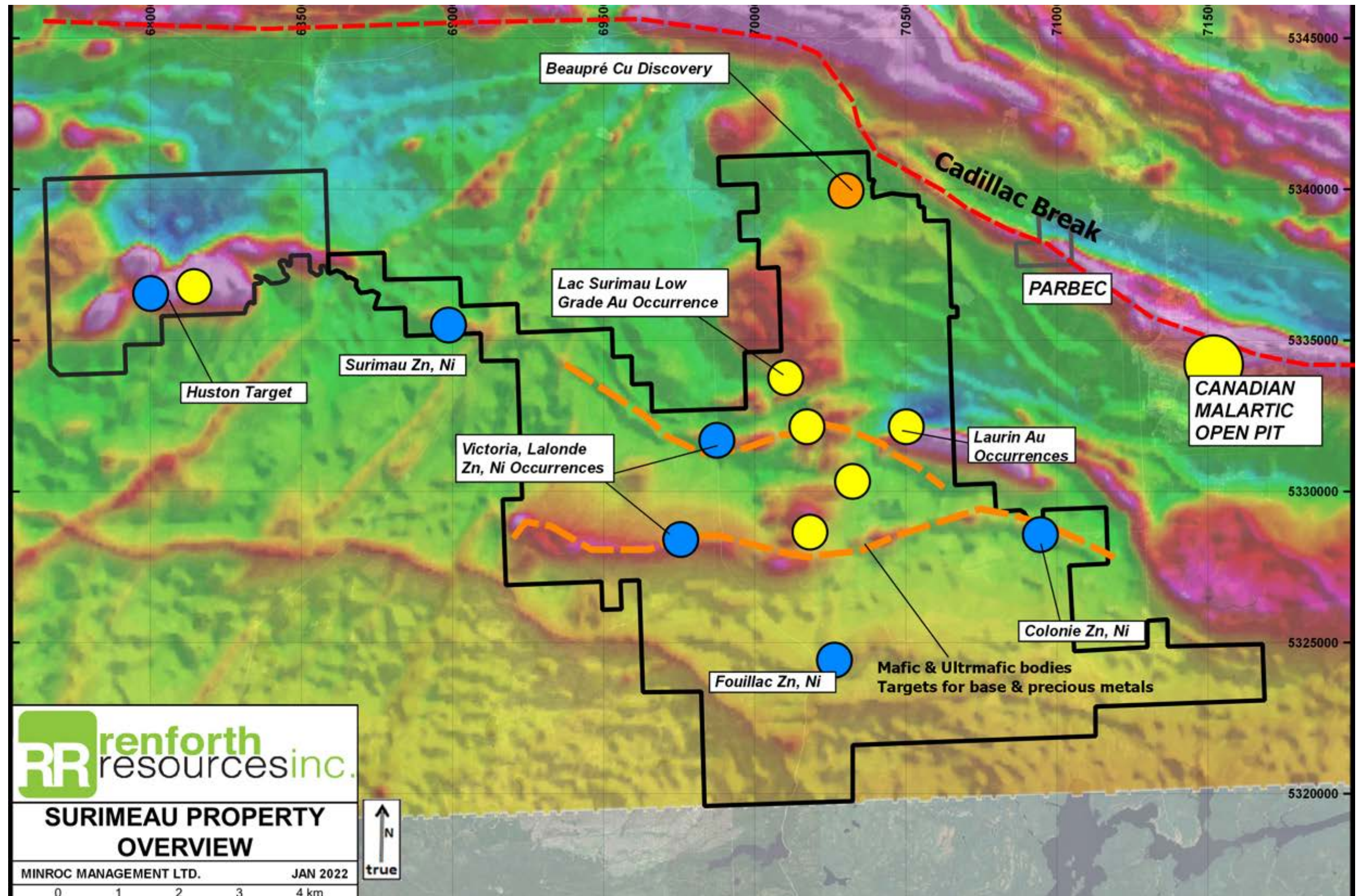


Large Scale Mineralized System / 大规模矿化系统

Proven Systems Underexplored, Multi Commodity Potential /

已证实的系统勘探不足，有多种大宗商品的潜力

Zinc, Nickel, Gold, Copper, Lithium / 锌、镍、黄金、铜、锂



Surimeau - Sustainable Potential Future Nickel Source / 未来可持续的潜在镍来源

Sulphide nickel bearing ultramafic which can sequester carbon and be processed using renewable energy / 硫化物含镍超基性岩，可以封存碳并利用可再生能源进行加工

“Green” Power Source For Surimeau / Surimeau的绿电来源

“Québec’s electricity production sector has one of the lowest carbon footprints in the world. The electricity it produces is derived from sources that are more than 99.8% renewable, mainly hydropower.”² / “魁北克省的电力生产部门是世界上碳足迹最低的地区之一。其生产的电力99.8%以上来自可再生资源，主要是水电”²

Carbon Sequestration Potential at Surimeau / Surimeau的碳封存潜力

Research publicly cited between exploration companies, Universities such as Laval and senior miners such as Glencore is advancing natural and engineered carbon sequestration in ultramafic rocks. This technology has the potential to offset carbon production in mining situations, working towards net zero carbon production in mining operations / 勘探公司、拉瓦尔等大学和Glencore等大型矿企之间公开引用的研究正在推进超基性岩中的自然和工程碳封存。这项技术有可能抵消采矿运营产生的碳，努力实现采矿作业的净零碳生产

Surimeau’s Low Impact Location and Logistics / Surimeau低影响的位置和物流

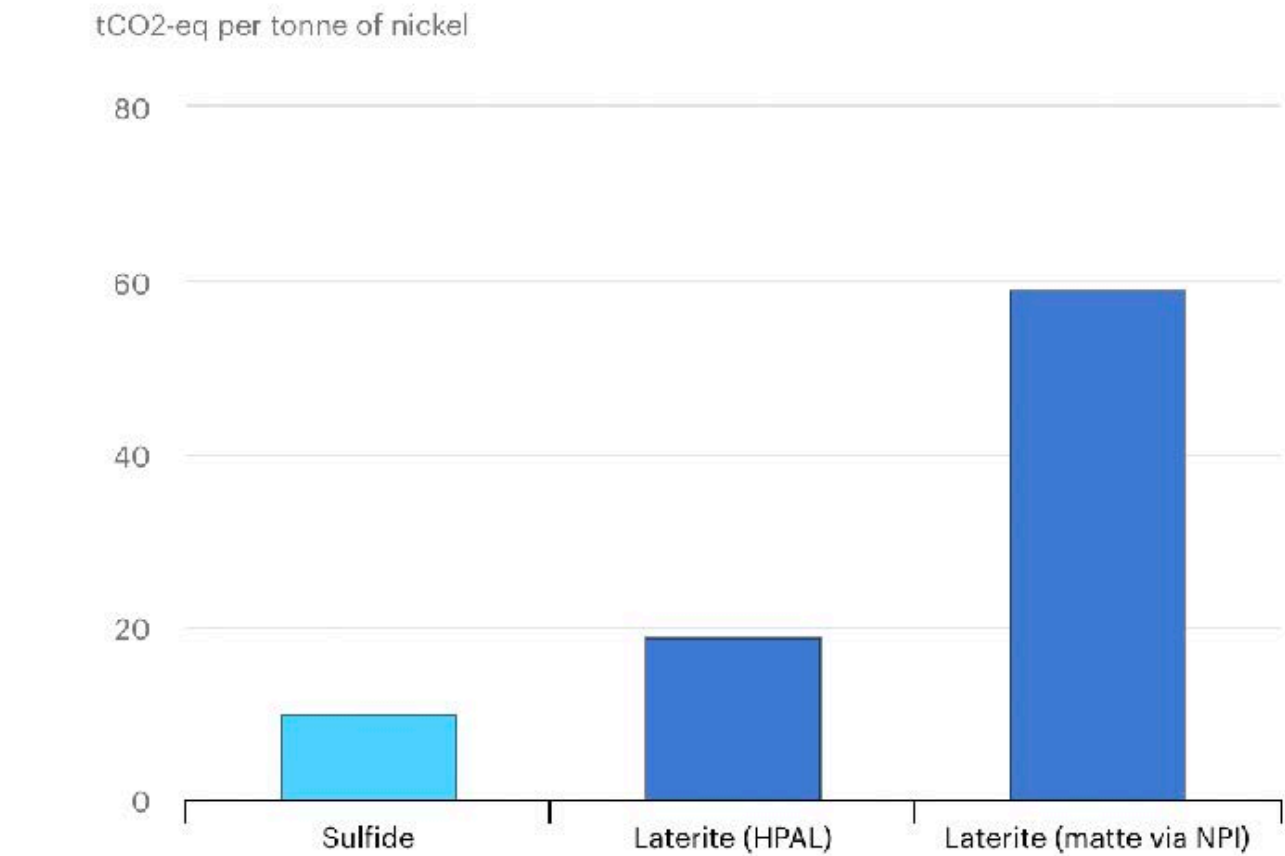
Surimeau is located in a mature mining camp with road and rail access to everything needed for exploration and development. This includes specialized smelters in operation for copper, nickel and zinc in nearby locations. The ability to use existing infrastructure, services and capacity largely eliminates the need, and cost (financial and environmental) of purpose built solutions and/or transportation typically seen in remote locations. Ultimately this will lower the environmental impact and operating costs, as well as economic thresholds, for any future mining operations./ Surimeau 位于一个成熟的采矿营地，有公路和铁路和勘探和开发所需的一切。这包括在附近运营的铜、镍和锌的专业冶炼厂。利用现有的基础设施、服务和产能在很大程度上消除了偏远地区通常看到的专门建造解决方案和/或运输的需要和成本（财务和环境）。最终，这将降低任何未来采矿作业的环境影响和运营成本，以及经济门槛

Inspiration for Surimeau? / 对Inspiration的激励?

Terrafame’s low carbon Talvivaara Mine in Finland boasts reserves of 1 billion tonnes of ore grading 0.22% [nickel](#), 0.13% [copper](#), 0.5% [zinc](#) and 0.02% [cobalt](#) thus resulting 2.2 million tonnes of nickel, 1.3 million tonnes of copper, 5 million tonnes of zinc and 0.2 million tonnes of cobalt. Year round production from the open pit deposit is via heap leach, the metals produced are converted into battery chemicals onsite, a unique production proposition. This responsible closed loop operation is inspiration for Surimeau, or a target to strive for. / Terrafame在芬兰的低碳Talvivaara矿拥有10亿吨矿石储量，[镍](#)的品位为0.22%，[铜](#)为0.13%，[锌](#)为0.5%，[钴](#)为0.02%，因此有220万吨镍，130万吨铜，500万吨锌和20万吨钴。露天矿床的全年生产是通过堆浸法进行的，生产的金属在现场转化为电池化学品，这是一个独特的生产方式。这种负责任的闭环操作对Surimeau来说是一种激励，也是一种努力的目标

GHG emissions intensity for class 1 nickel by resource type and processing route

Open ↗



IEA. All Rights Reserved

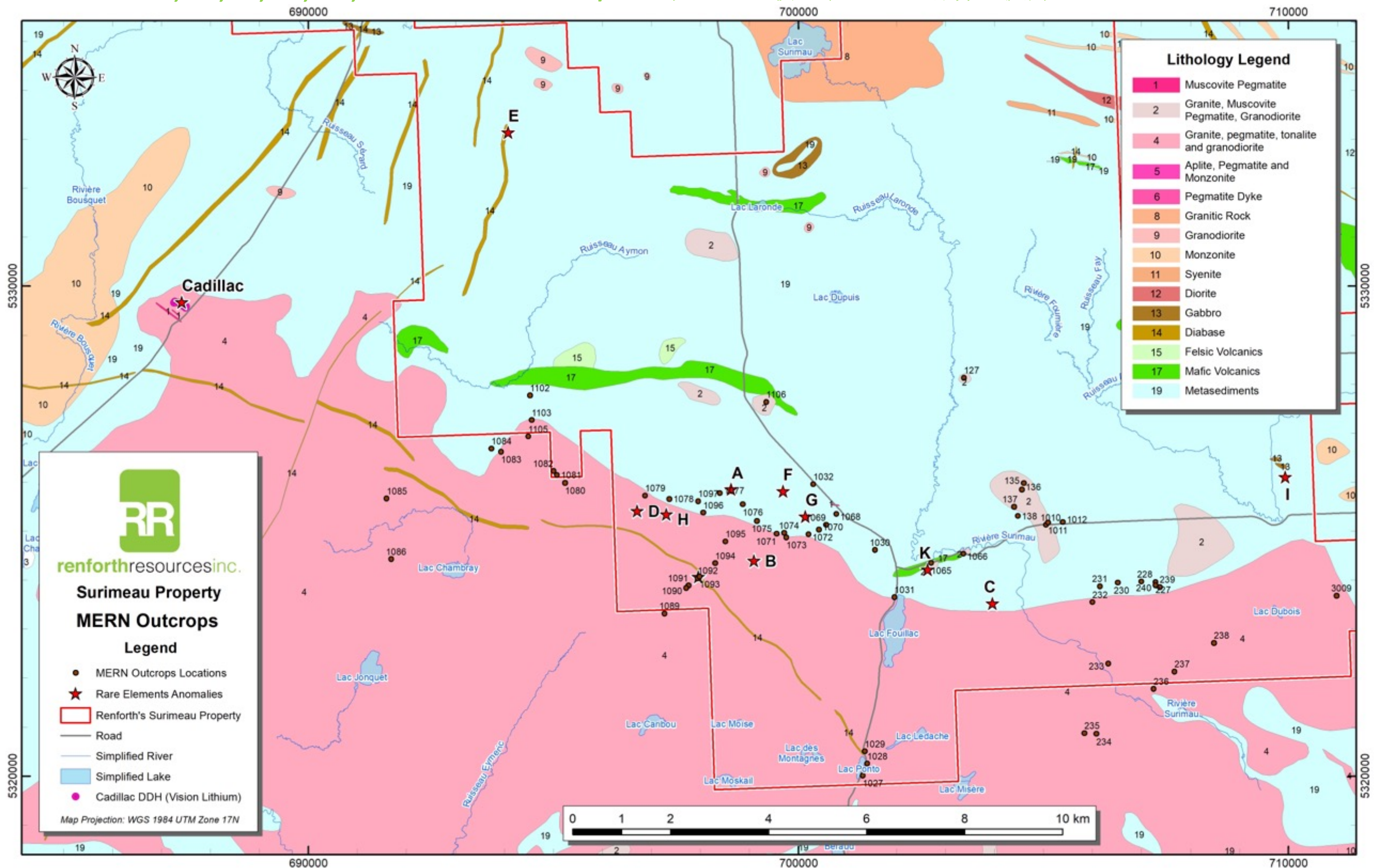
● Today's main pathway ● Areas of future growth

Numerous Pegmatites and Targets / 许多伟晶岩和靶区

11 Identified Peraluminous Rare-Element Enriched Pegmatites and Anomalies /

11个已确定的高铝质稀土富集伟晶岩和异常区

Elevated Li, Rb, Cs, Be, Nb, Ta and Sn Contents / 锂、铷、铯、铍、铌、钽、锡含量提升





Surimeau Property
Decelles Batholith and Pontiac Sediments Contact

MINROC MANAGEMENT **May 26, 2023**

0 1 2 3 4 5 km

UTM NAD83 z17U



Chemin Rapide 7

Lalonde

Victoria West

Victoria

Colonie

Chemin du Lac Mourier

Vision Lithium - Cadillac Lithium Project
Spodumene Showing

Decelles Batholith and
Sediment Contact
(approximate) and
property boundary

Decelles Batholith - Pontiac Sediments
Boundary = 25km on property (approx.)
Amount prospected on property - 16km
(approx.)

Decelles Batholith and
Sediment Contact
(approximate) and
property boundary

Surface Data

Samples by Program Year

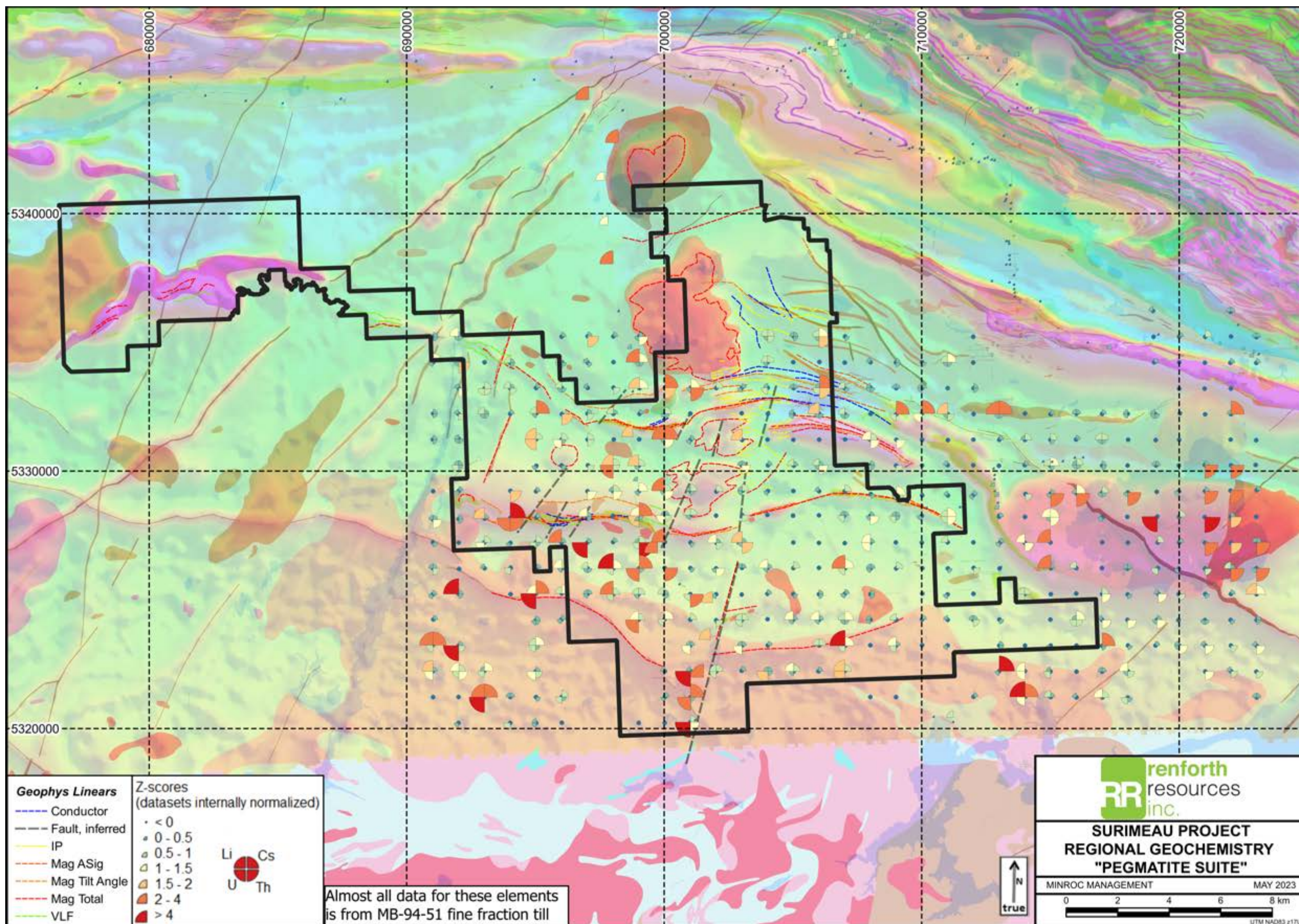
- 2019
- 2020
- 2021
- 2022
- 2023

Tracks

Tracks and Coverage

Surface Geology

- Abitibi Sediments
- Pontiac Sediments
- Decelles Batholith
- Diabase
- Diorite
- Iron Formation
- Int/Fels Volcs
- Mixed mafic / ultramafic

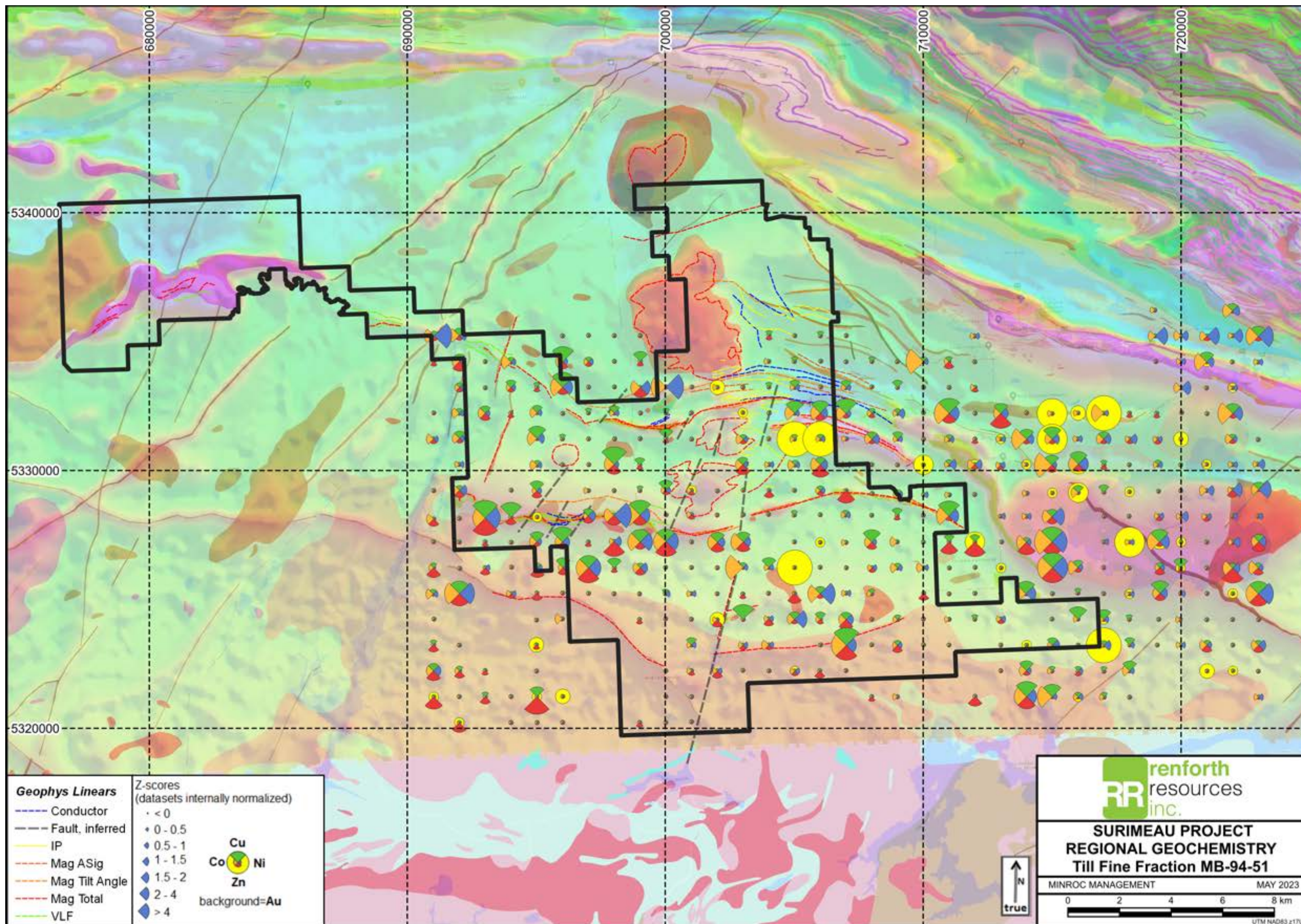


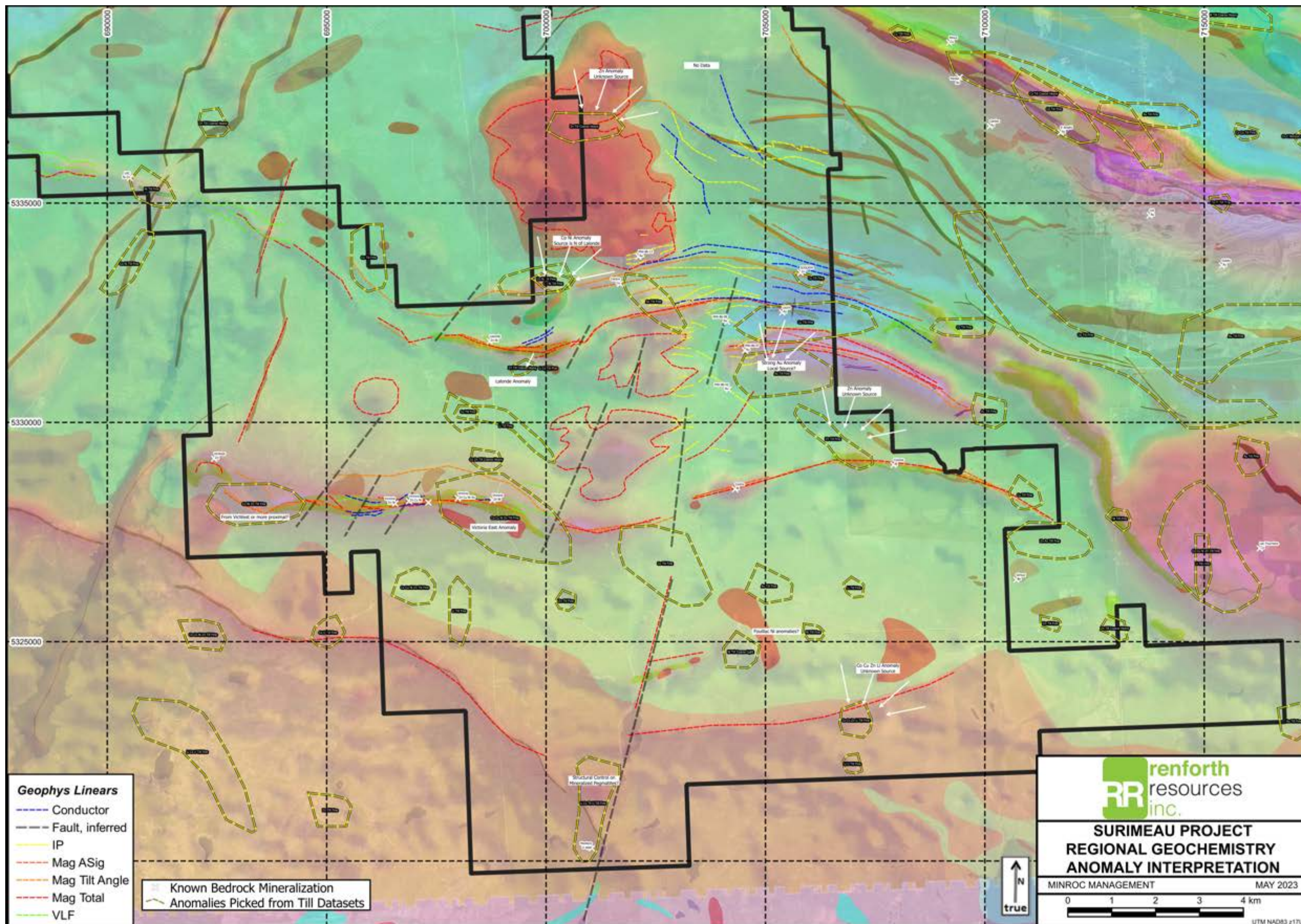
**SURIMEAU PROJECT
REGIONAL GEOCHEMISTRY
"PEGMATITE SUITE"**

MINROC MANAGEMENT MAY 2023

0 2 4 6 8 km

UTM NAD83 21TU

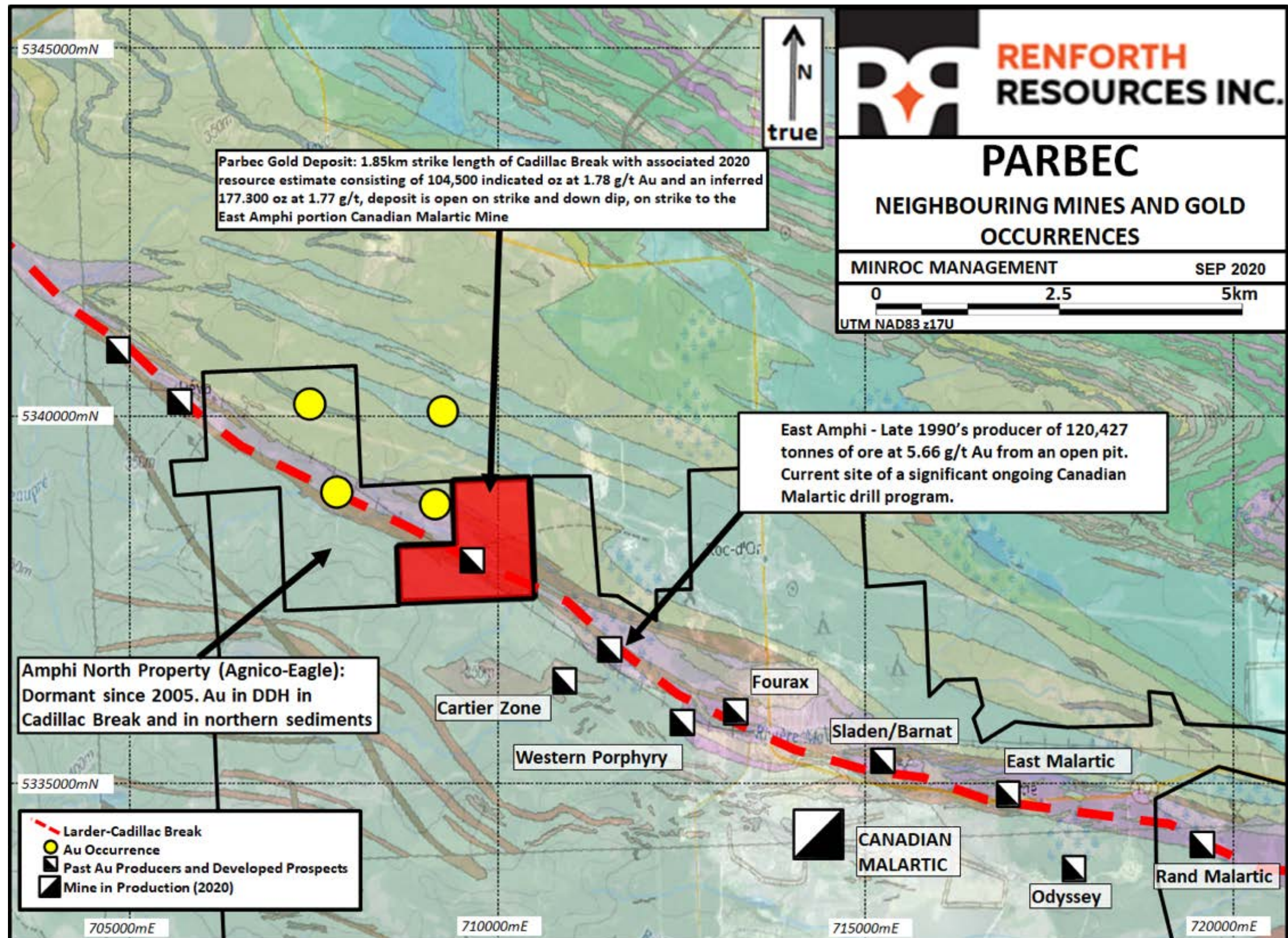




Parbec Gold Deposit / Parbec黄金矿床

On Strike to Active Mine Complex / 位于活跃矿山所处的走向上

Ongoing Advanced Exploration Subsequent to Last MRE / 上次矿床资源量评估后正在进行高级勘探



Parbec Gold Deposit / Parbec黄金矿床

High Grade Gold Present in the System / 系统中存在高品位黄金

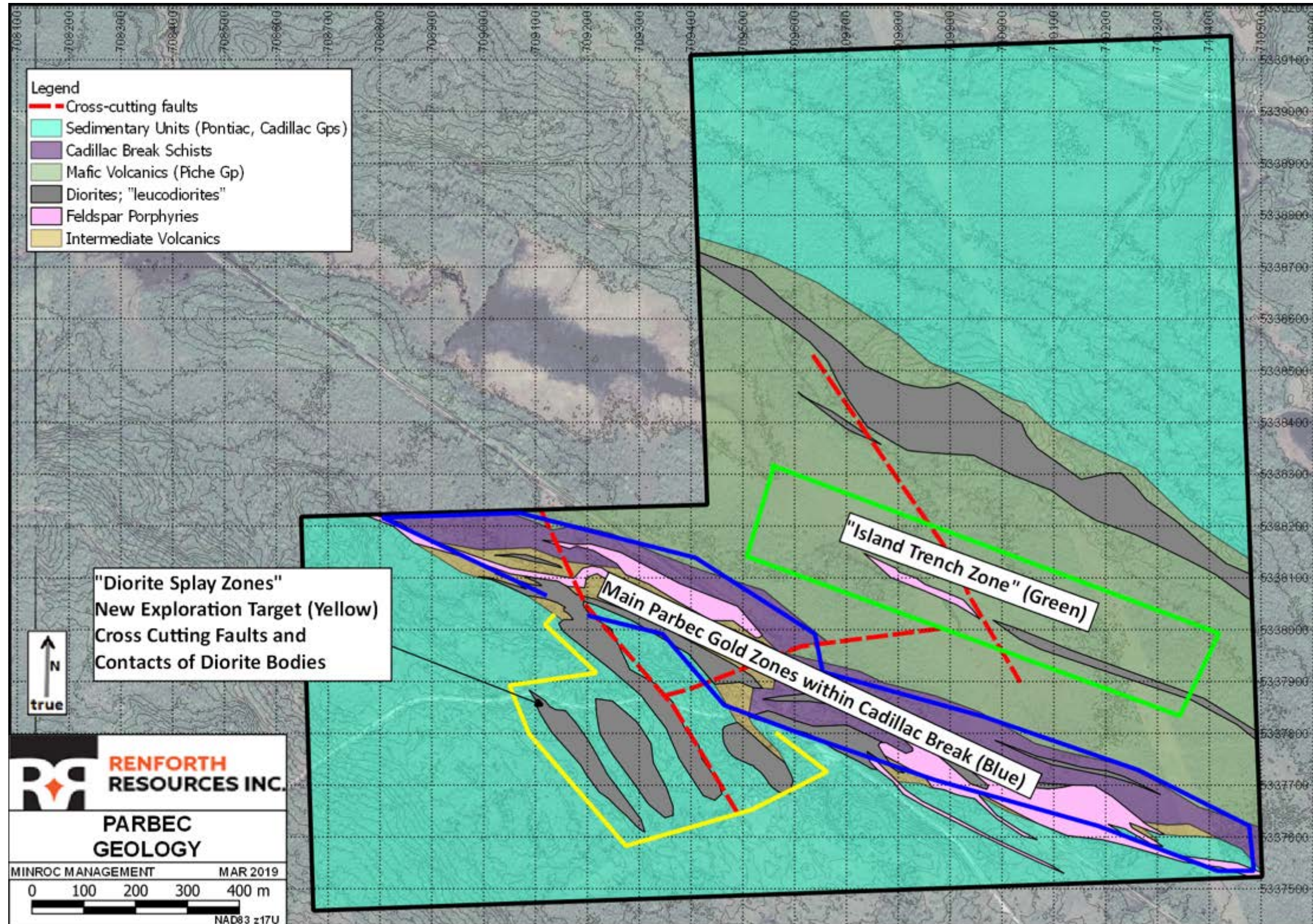
Deposit Only Partially Drilled Off, Open on Strike and at Depth / 仅钻探了部分矿床，沿走向和向深处均开放

Project/Program	Feature	Au g/t	Length m	Hole #
Parbec	High Assay	118.7	0.35	PAR-21-133
Parbec	High Assay	67.54	0.76	PAR-86-06
Parbec	High Assay	56.57	0.61	PAR-87-32
Parbec	High Assay	38.1	0.9	PAR-10-01
Parbec	High Assay	31.47	2.15	PAR-21-133
Parbec	High Assay	31.2	1	PAR-21-135
Parbec	High Assay	25.82	2.1	PAR-93-54
Parbec	High Assay	25	0.6	PAR-19-95
Parbec	High Assay	24.62	0.9	PAR-18-92
Pabec	High Assay	22.3	1.1	PAR-21-128
Parbec	Notable Interval	5.57	21.45	PAR-20-112
Parbec	Notable Interval	3.78	24.1	PAR-21-127
Parbec	Notable Interval	6.9	12.5	PAR-21-133
Parbec	Notable Interval	5.98	12.5	PAR-86-06
Parbec	Notable Interval	1.46	49.6	PAR-20-116
Parbec	Notable Interval	3.64	19.3	PAR-18-78
Parbec	Notable Interval	9.5	7.25	PAR-93-54
Parbec	Notable Interval	3.31	19.4	PAR-10-05
Parbec	Notable Interval	9.86	5.9	PAR-10-01
Parbec	Notable Interval	4.39	12.6	PAR-21-128

Parbec Gold Deposit / Parbec黄金矿床

3 Main Mineralized Areas, each with Blue Sky / 三个主要的矿化区，每个都潜力巨大

Significant Discovery of Mineralized Splay into Pontiac Requires Follow Up /
Pontiac矿化斜面的重大发现区需要后续跟进

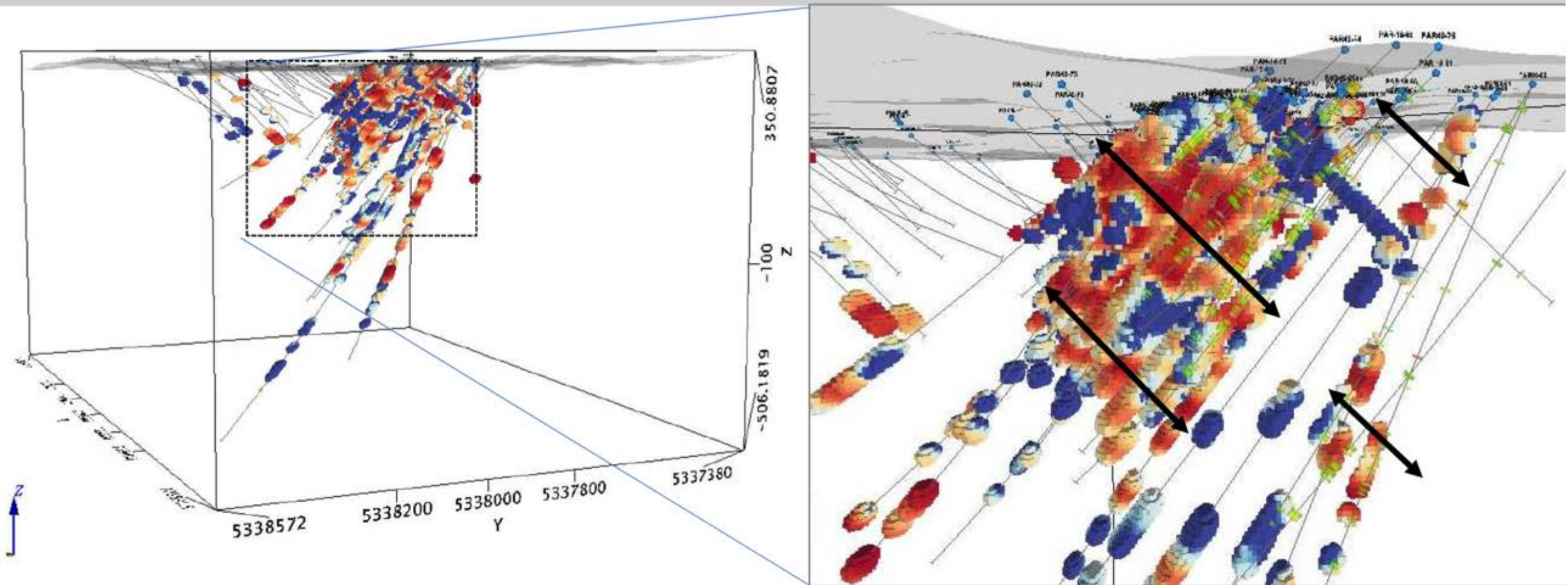


Parbec Gold Deposit / Parbec黄金矿床

Updating Our 2019 Interpretation / 更新我们2019年的解读

@15,000m Drilled Since the Deposit was Last Modelled (Model not used in MRE) /
上次矿床建模（不是矿产资源量评估所用的模型）后钻探了1.5万米

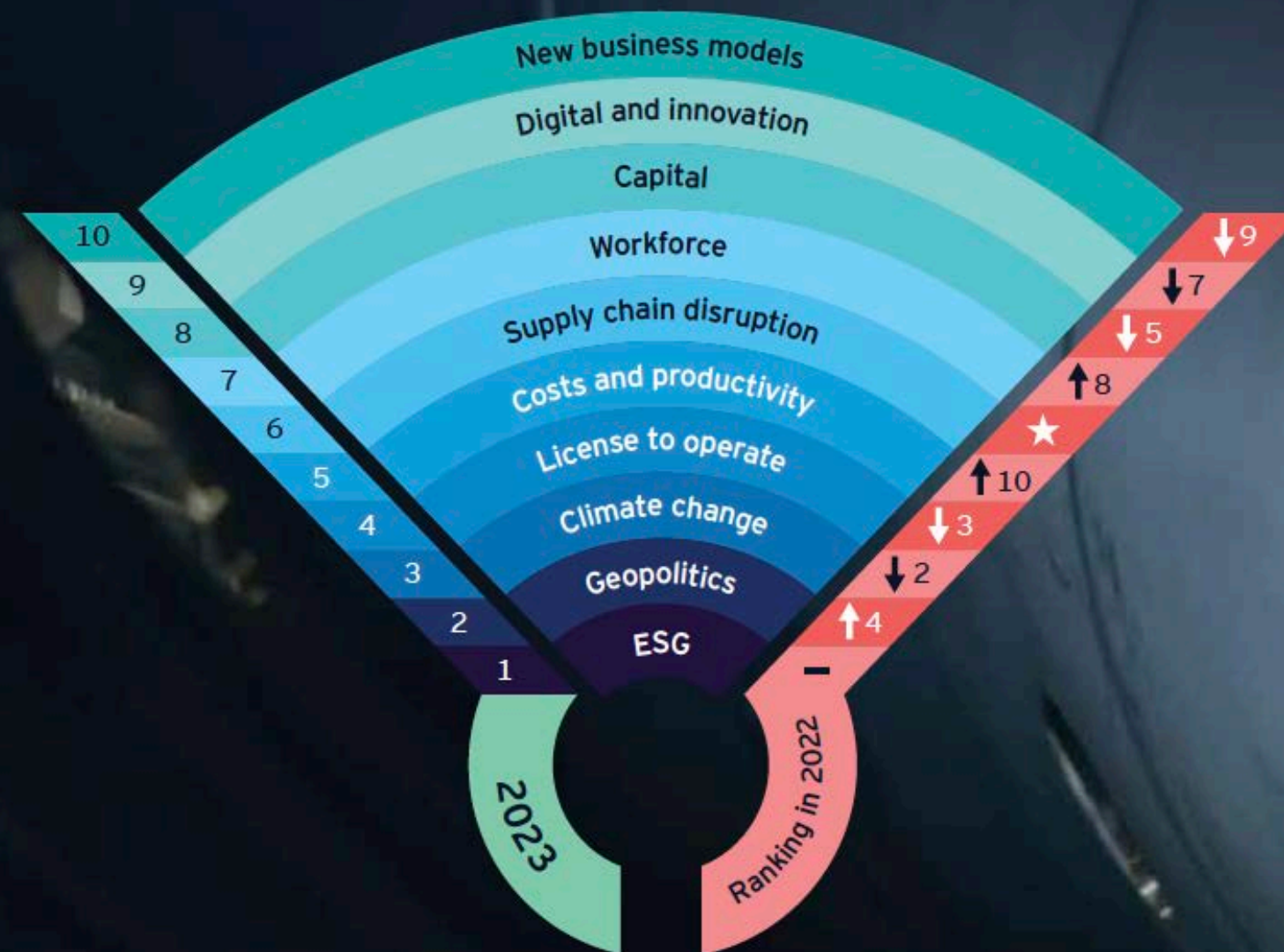
Parbec Project, Malartic
Evaluation by grade distribution



Details inside the deposit shows on section the flatter trend possibility with shallow or neutral plunges.

Yellow to red: above 1.0 g/t

EY top 10 business risks and opportunities for mining and metals: 安永总结的采矿业和金属领域十大商业风险与机会



↑ Up from 2022 ↓ Down from 2022 — Same as 2022 ★ New to the radar

1 ESG

Key priorities include increasing credibility through disclosure, water stewardship, circular economy, addressing expectations on biodiversity and developing a long-term strategic vision for mine closure.

2 Geopolitics

Global uncertainty puts pressure on companies to quickly assess the impact of different alliances, trade flows, governments and taxes on business decisions.

3 Climate change

Net zero is still a focus, but miners are also mitigating broader transition and physical risks. Companies must play a role in enabling a just transition – achieving decarbonization targets while considering the long-term impact of mine closures on workers and communities.

SHORT TERM 2020-2025 短期 2020-2025

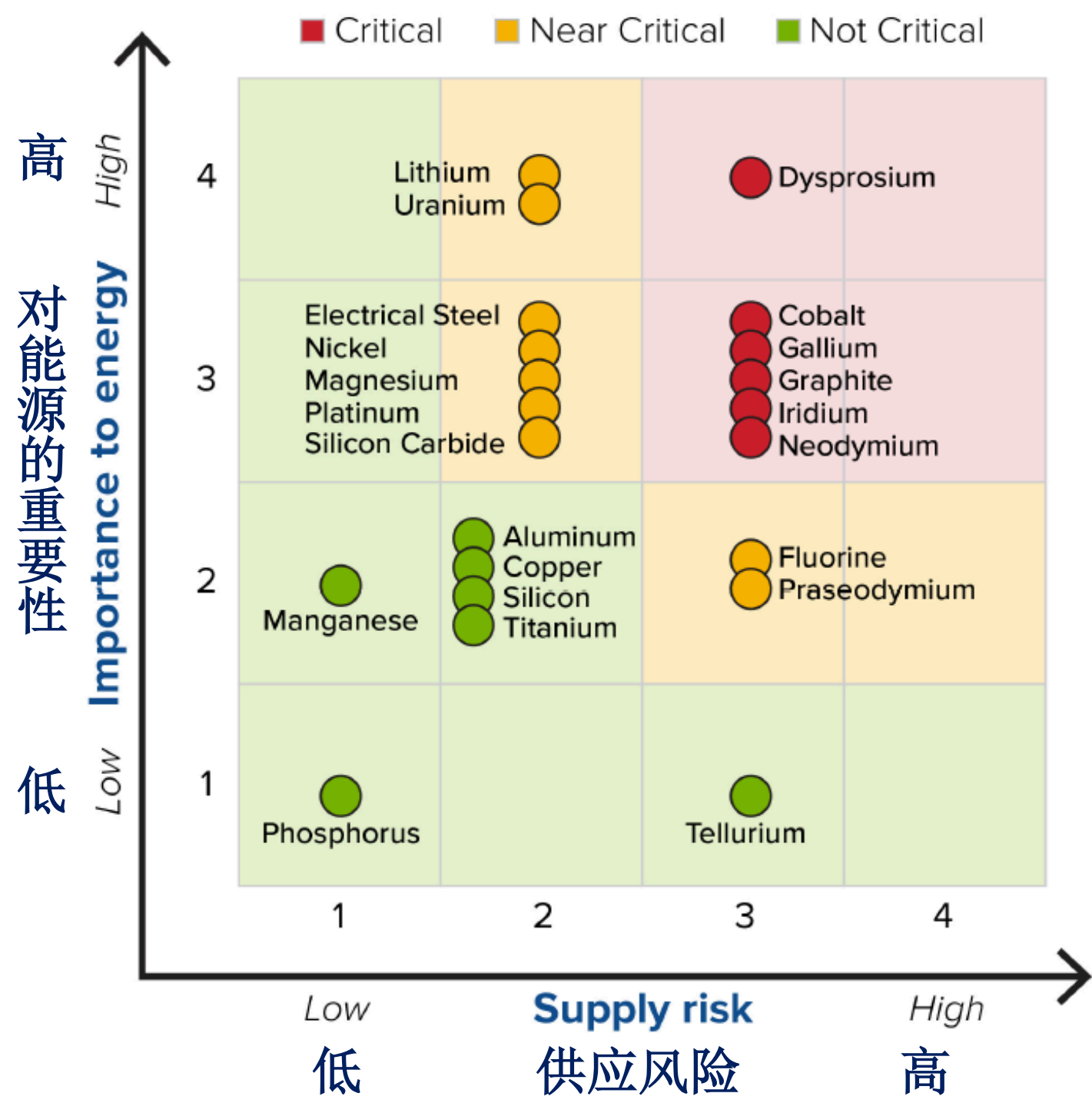


Figure 3.1 Short-term (2020–2025) criticality matrix

图3.1 短期（2020–2025）临界矩阵

MEDIUM TERM 2025-2035 中期 2025-2035

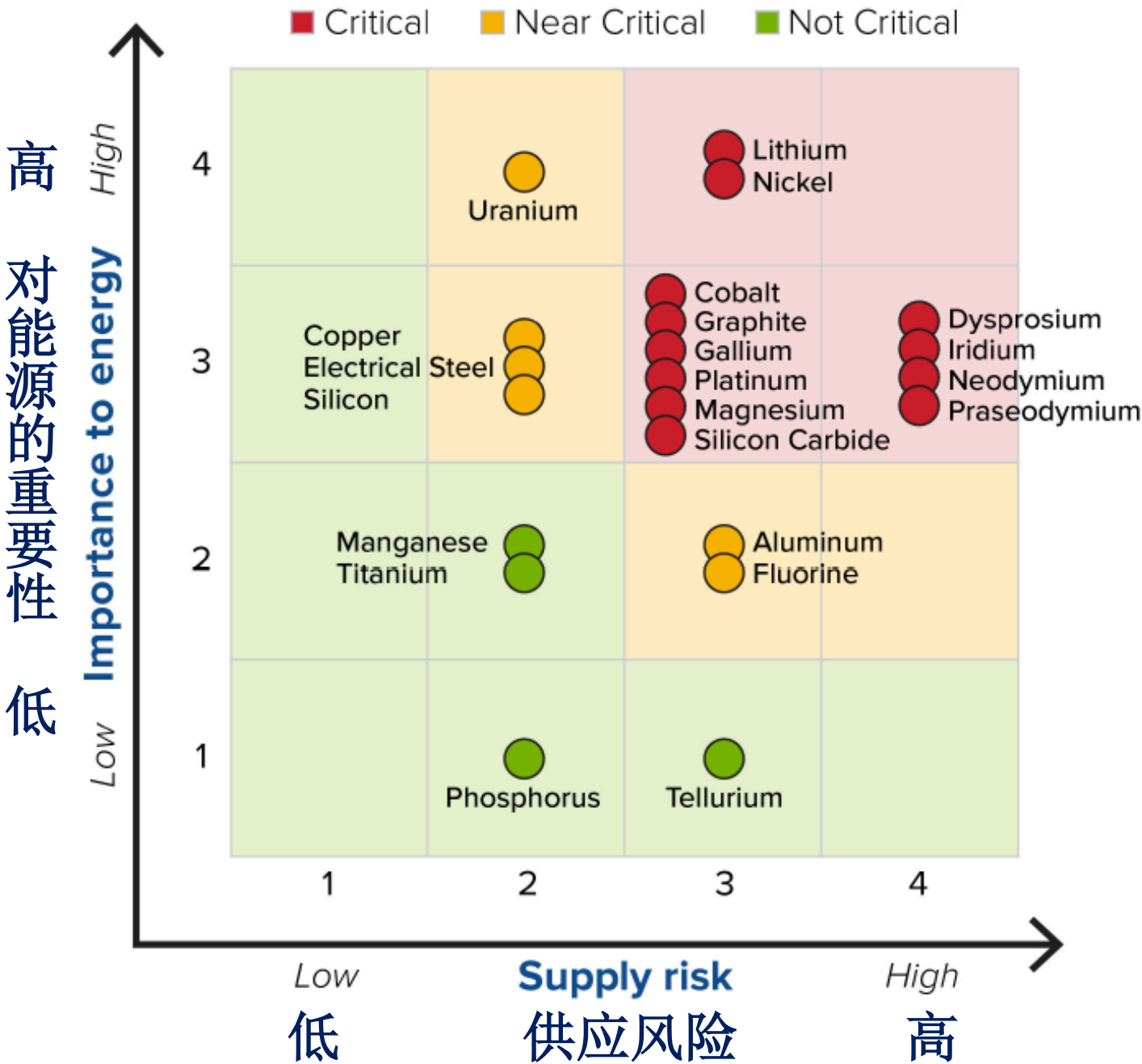


Figure 3.2 Medium-term (2025–2035) criticality matrix

图3.2 中期（2025-2035）临界矩阵