



TSX.V:GLDC | OTCQX:CGLCF | FRA:756

**ADVANCING THE HISTORIC  
CASSIAR GOLD DISTRICT IN  
BRITISH COLUMBIA, CANADA**

**CASSIAR GOLD CORP**  
Corporate Presentation – September 2024

# Disclaimer



Cassiar Gold Corp. (“Cassiar Gold” or the “Company”) has taken all reasonable care in producing and publishing the information contained on this presentation and will endeavor to do so regularly. Material on this presentation may still contain technical or other inaccuracies, omissions or typographical errors, for which the Company assumes no responsibility. Neither Cassiar Gold nor any of its current or proposed directors, officers, owners, managers, partners, consultants, employees, affiliates or representatives, make any warranty or representation, whether express or implied, or assume any legal liability or responsibility for any action taken in reliance upon the information contained in this presentation, or for the accuracy, completeness, or usefulness of any information disclosed. Furthermore, you may not modify or reproduce in any form, electronic or otherwise, any information in this presentation, except for personal use unless you have obtained the Company’s express permission.

This presentation, and the material contained hereon, is not intended as a solicitation, offering or recommendation of securities in any jurisdiction and the information contained herein in no way should be construed or interpreted as such. No securities commission or other regulatory authority in Canada or any other country or jurisdiction has in any way passed upon this information and no representation or warranty is made by the Company to that effect. The sole purpose of this presentation is for information purposes. The information outlined in this presentation is not a substitute for independent professional advice before making any investment decisions, and is not intended to provide, and should not be relied upon for, accounting, legal or tax advice or investment advice. Any investment in the Company is speculative and involves a high degree of risk.

The TSX Venture Exchange has not reviewed and does not accept responsibility for the adequacy or accuracy of the information in this presentation.

Certain information set forth in this presentation contains “forward-looking information” and “forward-looking statements” (collectively referred to as “forward-looking statements”) within the meaning of applicable Canadian securities legislation, Section 27A of the Securities Act of 1933 in the United States of America, as amended, and Section 21E of the Securities Exchange Act of 1934 in the United States of America, as amended.

Statements in this presentation other than purely historical information are forward-looking statements. Forward-looking statements include statements regarding: expectations on the size of the mineral resources on the Company’s properties, timing of ability to obtain resource reports and preliminary economic assessments, plans for mineral processing, timing and ability to raise capital and use of proceeds of such financings, long-term acquisition and developments plans, and the ability to enter into acquisition or option agreements and the timing and terms of same. Generally, forward-looking statements can be identified by the use of forward-looking terminology such as “plans”, “expects” or “does not expect”, “is expected”, “budget”, “scheduled”, “estimates”, “forecasts”, “intends”, “anticipates”, “does not anticipate”, or “believes”, or variations of such words and phrases that state that certain actions, events or results “may”, “could”, “would”, “might” or “will be taken”, “occur” or “be achieved”. Forward-looking statements are based on management’s expectations and reasonableness assumptions at the time such statements are made and are subject to all of the risks and uncertainties inherent in the Company’s business, including risks inherent in resource exploration and development. As a result, actual results may vary materially from those described in this presentation. Accordingly, readers should not place undue reliance on forward looking statements. Except as required by Canadian securities law, neither the Company nor its management undertakes to update any forward-looking statements in this presentation.

Unless stated otherwise, information pertaining to the Taurus Deposit Resource of the Cassiar Gold Property is summarized, derived or extracted from, respectively, the technical report titled “National Instrument 43-101 Technical Report on the Cassiar Gold Property” prepared for the Company by Scott Zelligan, P.Geo, James Moors, P.Geo, Chantal Jolette, P.Geo. with an effective date of April 28, 2022. Scott Zelligan, P.Geo, James Moors, P.Geo, and Chantal Jolette, P.Geo., are all independent as defined by NI 43-101 — Standards of Disclosure for Mineral Projects (“NI 43-101”). Unless stated otherwise, information pertaining to the Sheep Creek Property is summarized, derived or extracted from the technical report titled “NI43-101 Technical Report on the Sheep Creek Project” by Robert A. Lane, MSc, P.Geo with an effective date of August 17, 2017. Robert A. Lane, MSc, P.Geo is independent as defined by NI 43-101 — Standards of Disclosure for Mineral Projects.

Qualified Person: Jill Maxwell, P.Geo., VP Exploration, is a "Qualified Person" as defined under NI 43-101 and has reviewed and approved the technical content of this presentation.



# Why Cassiar Gold? Checking the Boxes



## INFRASTRUCTURE & PERMITS IN SAFE JURISDICTION

- ✓ 2 Mine permits, bisected by provincial highway 37, 160 km of access roads, fully owned & permitted 300 tpd mill, 17 portals, 25 km underground workings, power & water access, permanent camp already in place
- ✓ 100% owned, 59,000-hectare district-scale property in safe & stable British Columbia, Canada



## SIGNIFICANT EXPANSION & DISCOVERY POTENTIAL

- ✓ Potential to expand Taurus Resource of 1.4 Moz @ 1.14 g/t Au<sup>1</sup> in most directions laterally & at depth
- ✓ Potential for multiple bulk-tonnage/Taurus style satellite deposits across the land package
- ✓ Potential to expand multiple high-grade vein targets grading 10-20 g/t Au<sup>1</sup> along strike & down dip, with additional discovery potential for multiple blind parallel as well as stacked shear vein systems



## EXPERIENCED LEADERSHIP TEAM

- ✓ Well rounded & extremely successful group of geologists, engineers, operators, marketing and capital markets professionals with 250+ collective years in discovering, building, operating, and selling multi-billion dollar mining projects all over the world



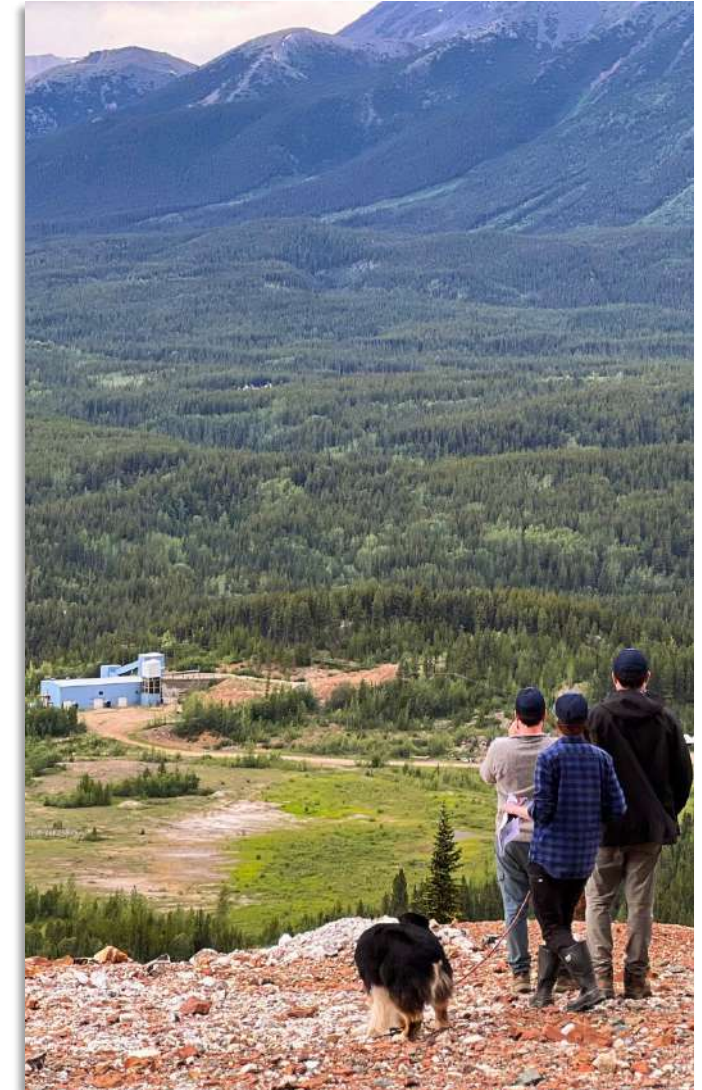
## COMMUNITY SUPPORTED & ENVIRONMENTALLY COMMITTED

- ✓ Collaborative & mutually supportive relationship with Community and Kaska Dena First Nations, including the training, hiring and development of local workforce and contractors
- ✓ Committed to advancing the projects under the highest ESG practices with continuous & transparent reporting



## UNDERVALUED WITH TREMENDOUS UPSIDE POTENTIAL

- ✓ C\$34.1 M Market Cap\* with significant leverage to the gold price, well capitalized, strong institutional support
- ✓ Focused on growing & de-risking the project to maximize Acquisition/Sale value via M&A Exit strategy
- ✓ Strategic optionality to “bootstrap” to production leveraging existing skillset, infrastructure and mine permits



# Tremendous Potential: BC's Inland Orogenic Gold Belt



- The Cassiar Gold property is hosted within British Columbia's inland belt of orogenic gold systems (140-120 Ma), with similarities to prolific orogenic gold districts such as the **Abitibi Greenstone Belt** and gold camps of Western Australia.

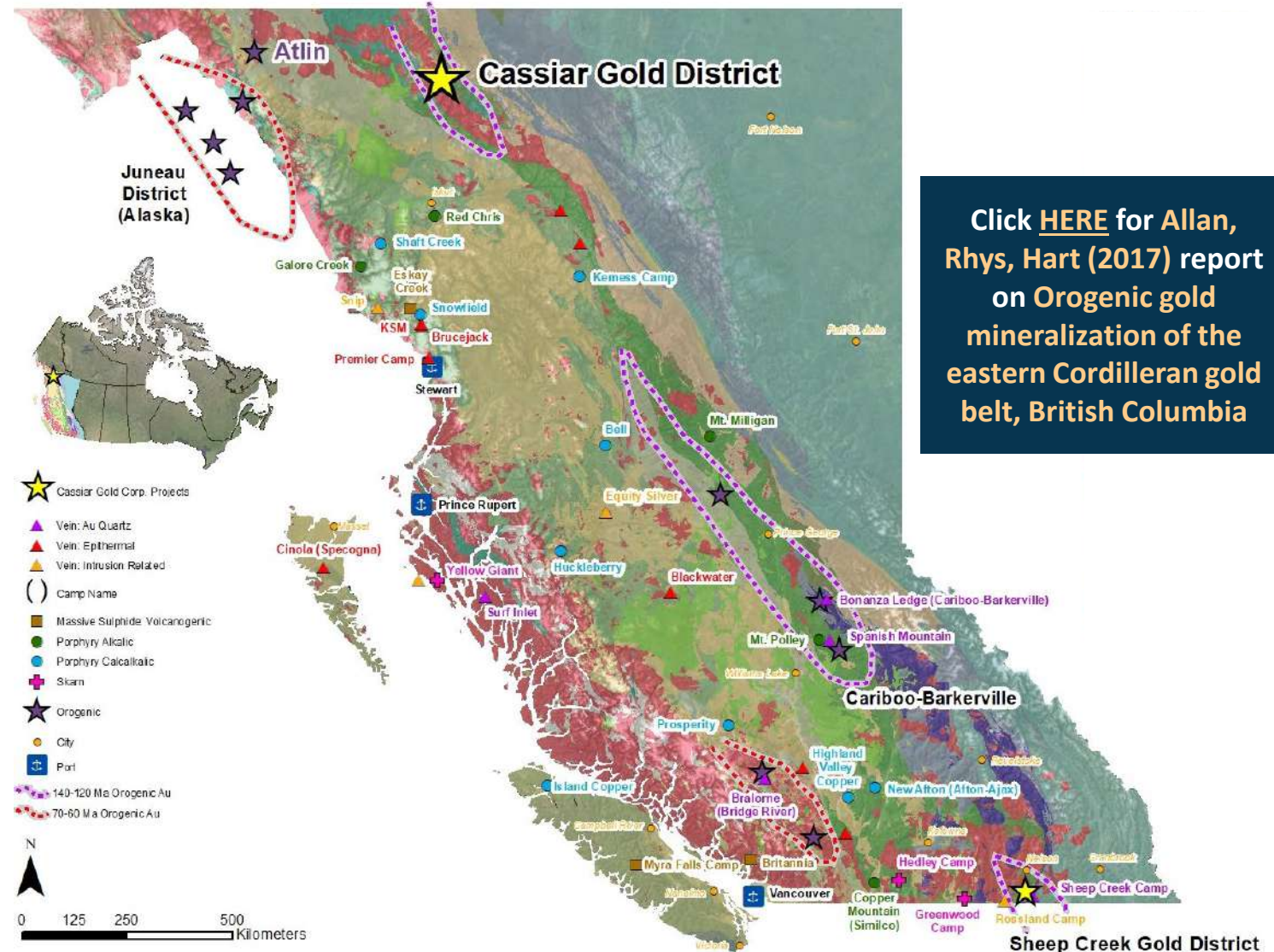
## Gold Reserves in prolific orogenic gold districts:

- Abitibi Greenstone Belt: **>340 Moz Au<sup>1</sup>** (Past Production, Reserves & Resources)
- Yilgarn Craton: **>350 Moz Au<sup>2</sup>** (Past Production, Reserves & Resources)

## Under-explored orogenic gold camps of BC:

Cariboo-Barkerville (>5 Moz), **Sheep Creek** (0.7 Moz) and **Cassiar Gold District** (>0.4 Moz).

- Orogenic Gold production accounted for 45% of all overall production in BC up to 2002<sup>3</sup>



Click [HERE](#) for Allan, Rhys, Hart (2017) report on Orogenic gold mineralization of the eastern Cordilleran gold belt, British Columbia

<sup>1</sup> Mercier-Langevin et al. (2020b); GSC Open File Report 8712

<sup>2</sup> Sumail et al. (2024b); Temporal constraints on gold mineralization at the world-class Jundeed deposit...; Precambrian Research, Vol. 10

<sup>3</sup> Allan, M.M et al. (2017); GBC Report 2017-15



# Premier Mining Jurisdiction Attracting Global Miners



Control over 2 major **orogenic gold districts** in BC:

## 1 Cassiar Gold FLAGSHIP PROPERTY

- 100% owned, 59,000-hectare district-scale orogenic gold system in the safe and stable jurisdiction of British Columbia, Canada.
- Site of historical Cassiar Gold Rush with total historic gold production of 425,000 oz<sup>1</sup>

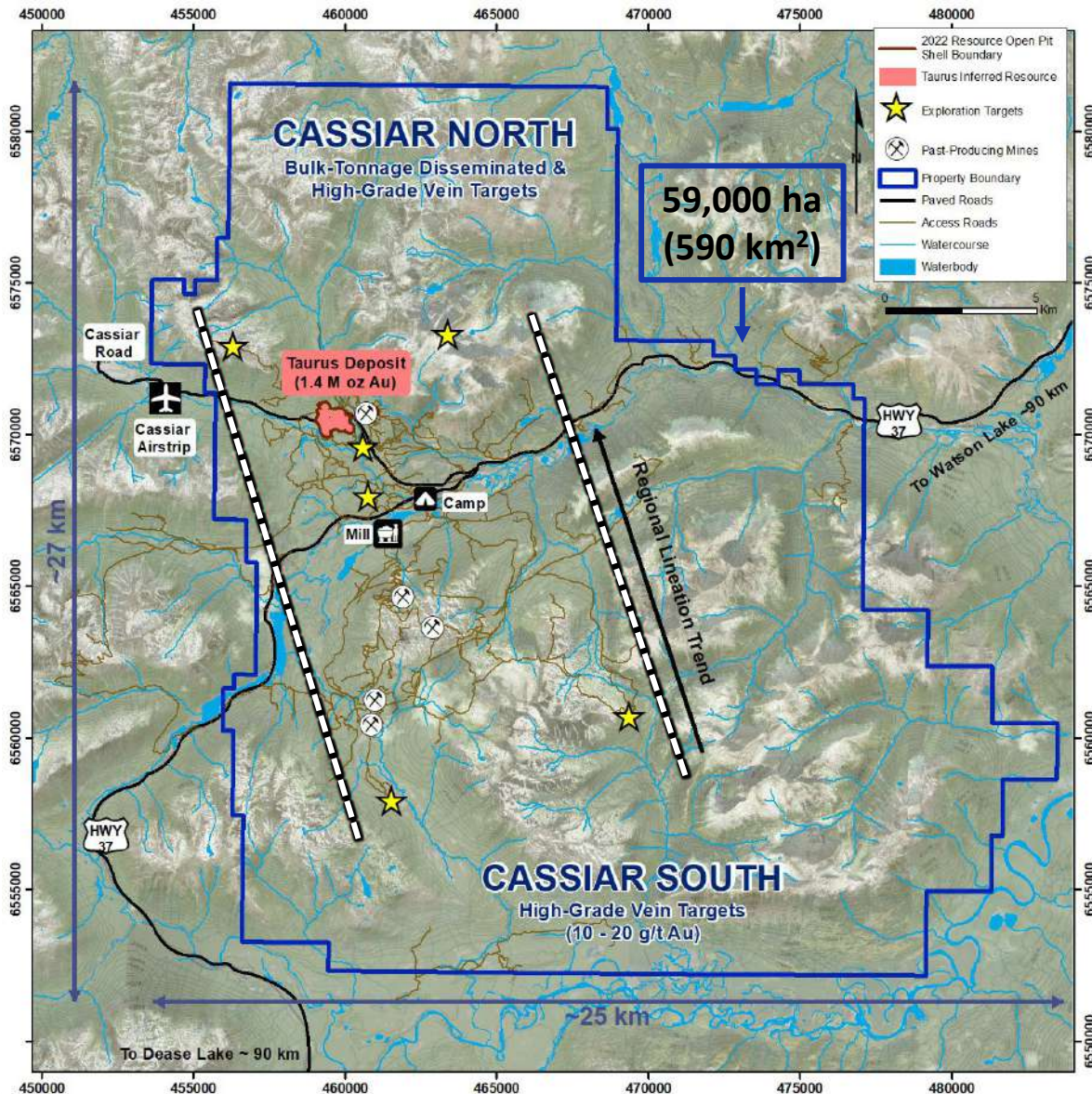
## 2 Sheep Creek

- 3rd largest past-producing orogenic gold district in BC with historical gold production (1899 - 1951) of 742,000 oz Au @ 14.7 g/t Au<sup>2</sup>
- Excellent exploration potential** – little exploration carried out since the 1950s - review in progress for exploration opportunities





# Property Overview District-Scale Potential



- +15 km N-S strike length of gold targets.
- **Exploration Opportunity:** Expand property resource base, advance exploration through deposit expansion, optimization, and the potential for new discoveries in the Cassiar District.
- **TWO KEY PROJECT AREAS:**
  1. **CASSIAR NORTH (North of Highway 37):** near-surface, bulk-tonnage **Taurus Deposit** hosting **1.4 Moz Au @ 1.14 g/t Au<sup>1</sup>** inferred mineral resource which is open for expansion laterally and at depth. **Multiple near surface targets across the property** with similarities to the Taurus Deposit.
  2. **CASSIAR SOUTH (South of Highway 37):** Past-producing **high-grade quartz vein deposits (10-20 g/t Au)<sup>1</sup>** open along **strike & down dip**, as well as potential for **multiple blind parallel and stacked vein systems**.
- **Similar mineralization style to Fosterville and Barkerville**, the property hosts over 90 Minfile showings and over 70 known individual veins or segments.

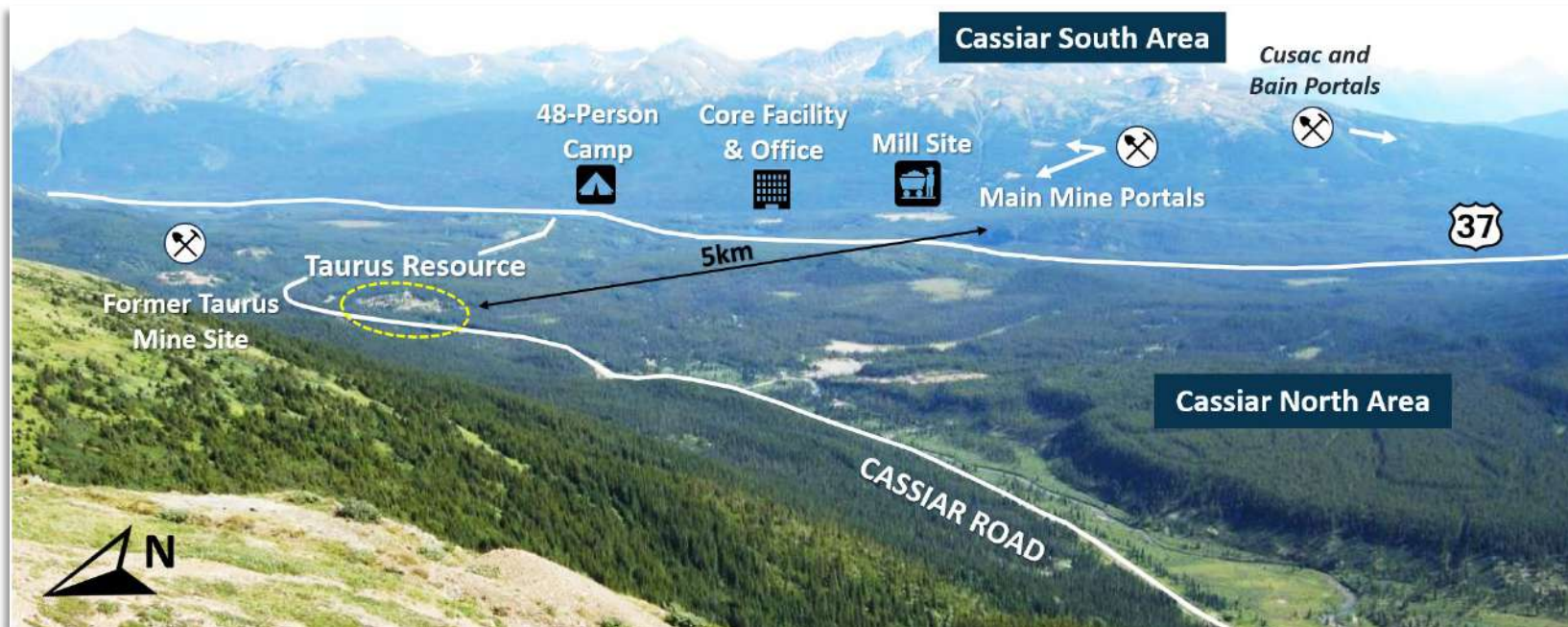
<sup>1</sup> Zelligan, Moors, Jolette, April 28, 2022. National Instrument 43-101 Technical Report on the Cassiar Gold Property, prepared for Cassiar Gold Corp.



# Outstanding Access Surrounded by Infrastructure



- Paved Provincial Highway 37 bisects the property with year-round access and connected to the paved Cassiar road passing through the Taurus Deposit area.
- Permanent camp with power & water access along with 160 km of property access roads.
- 1.2 km Cassiar airstrip just 5km from the Taurus Deposit.

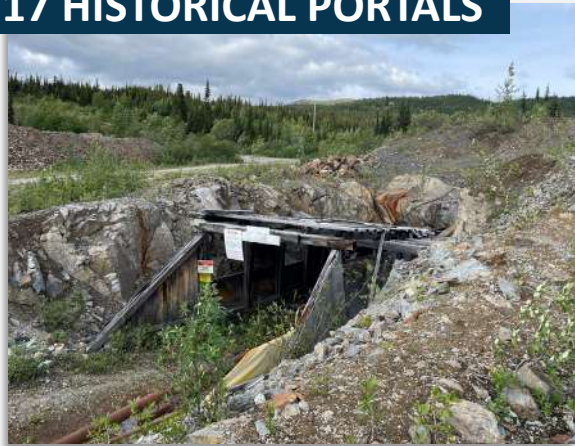




# Key Infrastructure Already in Place



**17 HISTORICAL PORTALS**



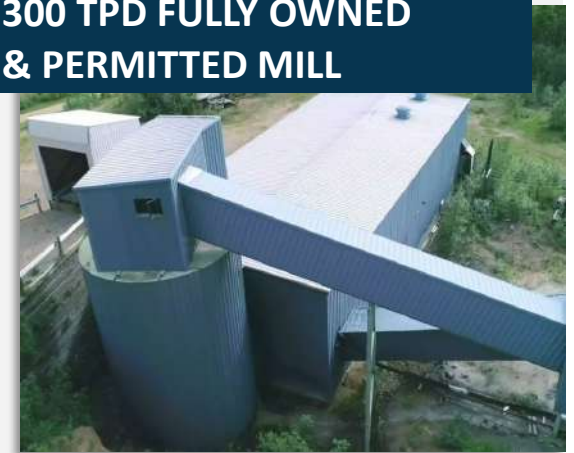
**25KM UNDERGROUND WORKINGS**



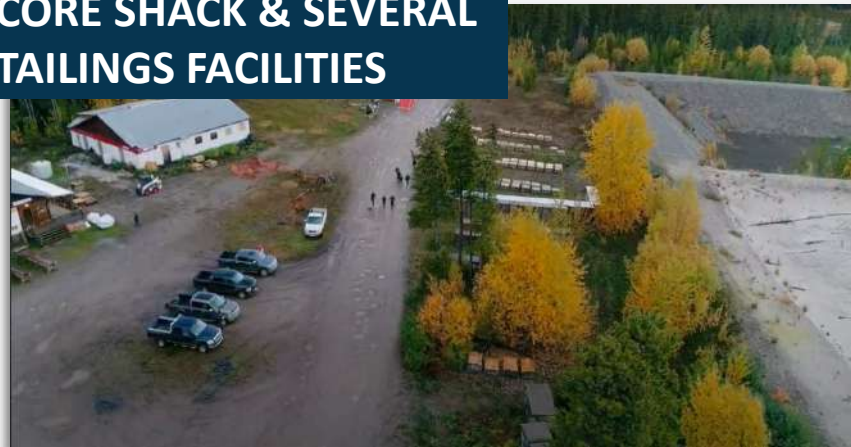
**POWER LINES**



**300 TPD FULLY OWNED & PERMITTED MILL**



**CORE SHACK & SEVERAL TAILINGS FACILITIES**



**160KM OF PROPERTY ACCESS ROADS**



**48-PERSON CAMP**  
with Grid Power & Water

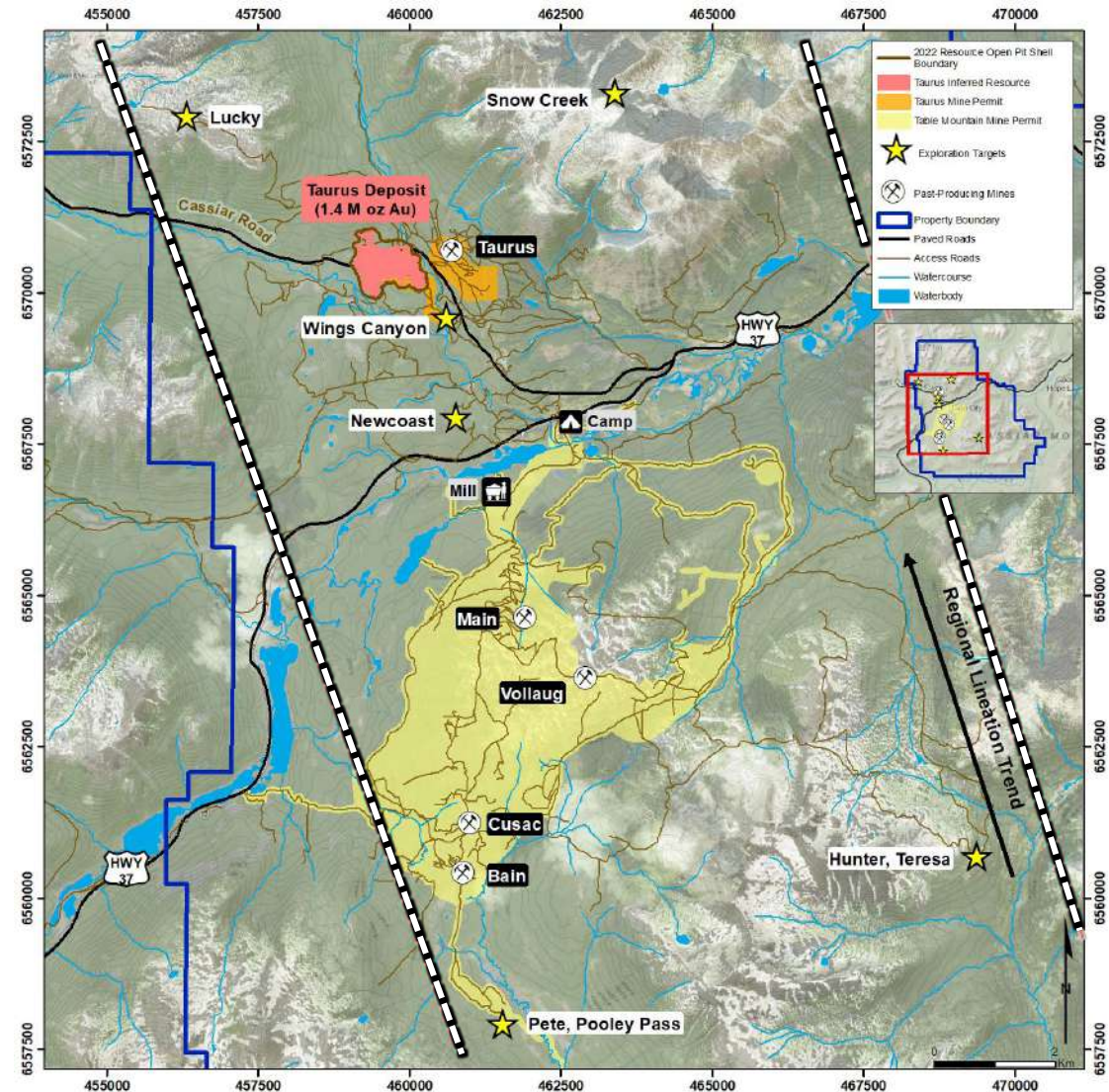




# 2 Mine Permits and Fully Owned & Permitted Mill



- In addition to having an exploration permit, there are two mine permits on the property (orange/yellow areas on map):
  - Taurus Gold Mine Permit (M-149) (1.2km<sup>2</sup>)** covers the past-producing Taurus Mine; the majority of the current Taurus resource footprint; 2 tailings facilities and former mill site.
  - Table Mountain Permit (M-127) (20km<sup>2</sup>)** at Cassiar South covers all past-producing mines on Cassiar South, 2 tailings facilities, and 300 tpd mill.
- Fully owned & permitted 300 tpd mill produced **both gravity and flotation concentrates** that were sold offsite. Mill was last in production in 2007<sup>1</sup>, partially refurbished in 2010 and currently in good condition.
- Recoveries averaged 93%<sup>2</sup> and up to 96% at Cassiar South.



<sup>1</sup> Zelligan, Moors, Jollette, April 28, 2022. National Instrument 43-101 Technical Report on the Cassiar Gold Property, prepared for Cassiar Gold Corp.

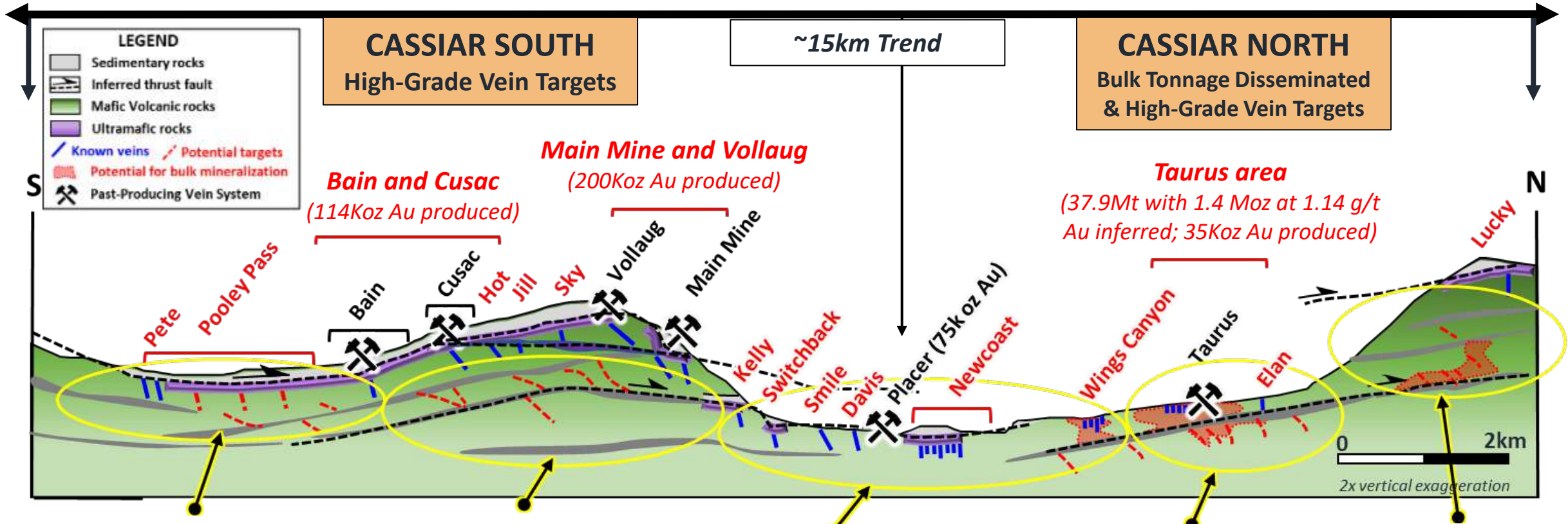
<sup>2</sup> Cowley, 2017. NI43-101 Technical Report on the Cassiar Gold Property, British Columbia, Canada, for China Minerals Mining Corp, June 26, 2017, revised Oct. 2, 2017, and references therein

# District-Scale with Significant Discovery Potential



Click [HERE](#) to watch the Technical Presentation hosted by David Rhys!

## Cassiar Gold Property - Schematic Longitudinal Section, Looking West



Underexplored area with opportunity for discovery and advancement

Potential for extension along strike and down dip of known vein systems, as well as potential for parallel and stacked vein systems

Multiple targets underexplored with significant potential for advancement

Taurus: Potential resource expansion laterally and at depth

Both shallow and moderate depth targets with high discovery potential



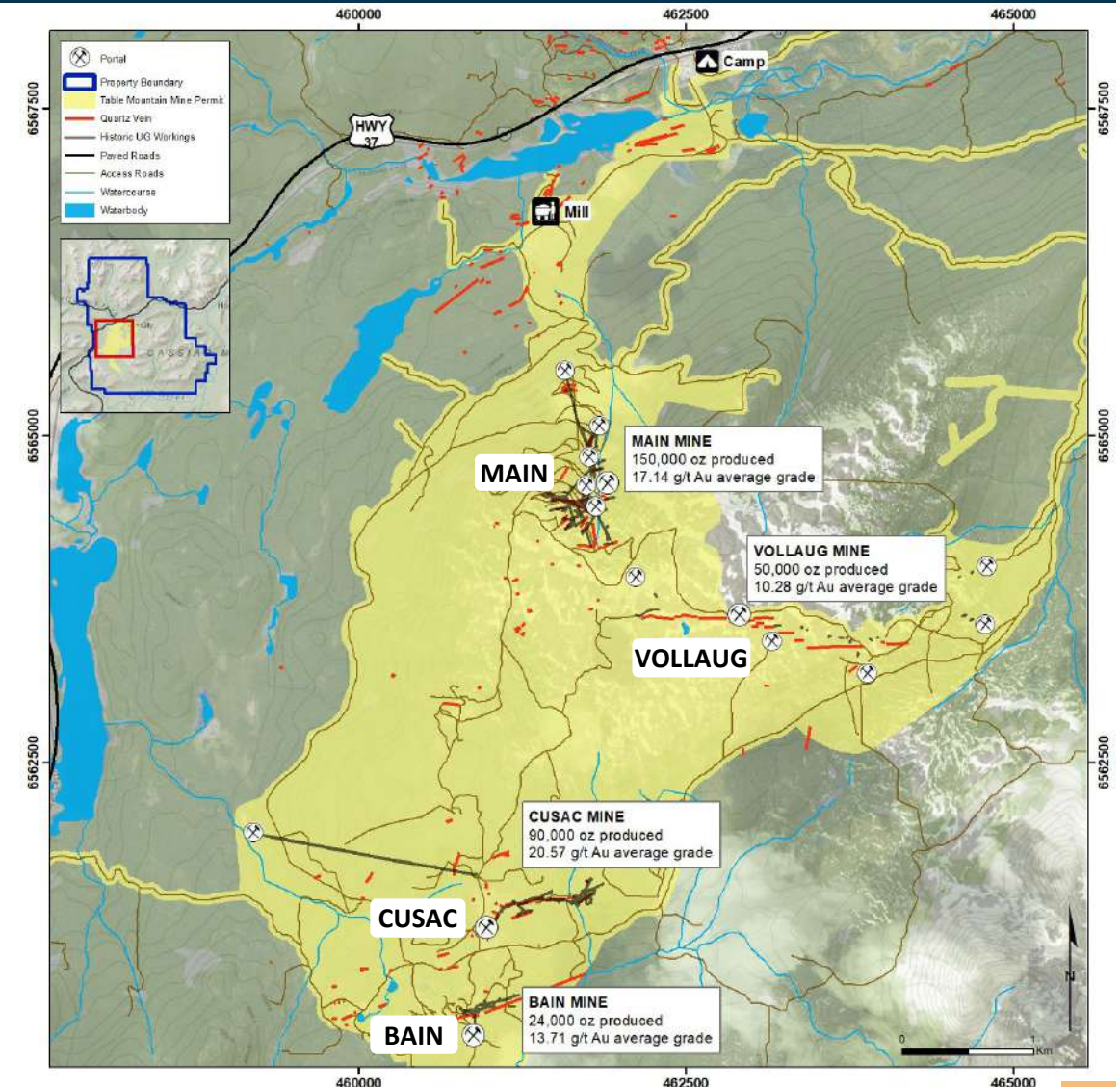
# Cassiar South: High-Grade History & Potential



- Multitude of shear quartz vein gold targets with historical production of **~315,000 oz<sup>1</sup> from four vein systems and 15 portals**.
- Historical recovered grades of **~10-20 g/t Au<sup>1</sup> with mine dilution**.
- Past-producing vein systems **hosted up to ~150koz Au and known vein prospects occur roughly 400 to 600 m apart**.
- **High-Grade Discovery Opportunities:**
  - Multiple past-producing vein systems remain open along strike & down dip near mine workings.
  - Known vein targets remain under-explored.
  - Periodicity of vein systems and stratigraphic repetition suggest high potential for blind stacked and parallel veins.

**Past Production from Cassiar South High-Grade Veins<sup>1</sup>**

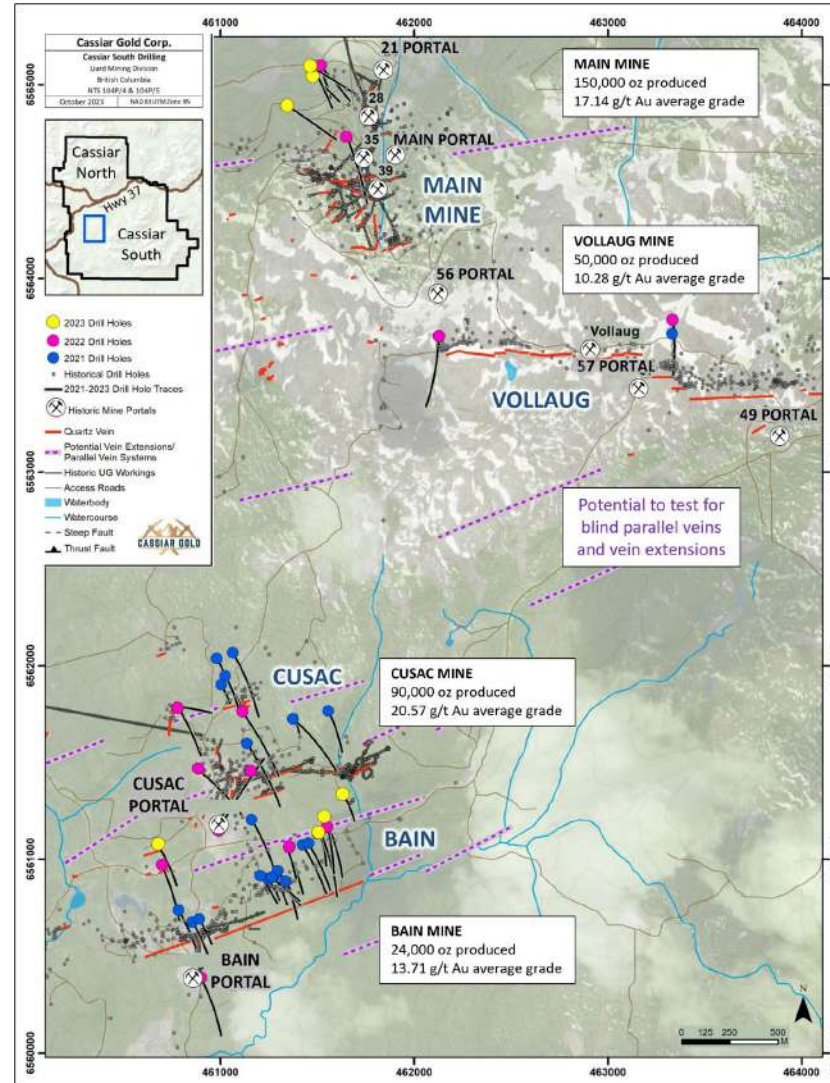
Veins	Year Mined	Tonnes (approx.)	Ave. Grade Gold g/t	Oz Gold
Jennie-Maura-Alison-Bear (Main)	1979-1988	272,000	17.14	150,000
Eileen-Michelle-Lily (Cusac)	1986-1997	136,000	20.57	90,000
West Bain (Bain)	1993-1995	54,500	13.71	24,000
Vollaug (Vollaug)	1980-1997	154,000	10.28	50,000
Bear (Main)	1998	-	-	1,000
Rory (Main)	2006-2007	5,900	3.43	651
<b>Total</b>				<b>315,651</b>



# Cassiar South: Drill Highlights



- 18,000 m of drilling 2021-2023
  - 3,200 m in 2023
- Cassiar Gold drilling identified:
  - Extensions of known mineralization near existing infrastructure
  - Interpreted offset vein segment of past producing Bain vein system
  - Gold-bearing quartz veins adjacent to known vein systems
  - Confirmed continuity of high-grade mineralization at the East Bain vein



Drill hole location map of exploration and expansion holes relative to mine infrastructure. Production figures from past producing mines are from Zelligan, Moors, Jolette 2022.

Target Area	Drill Hole	From (m)	To (m)	Length (m)	Grade (g/t Au)
East Bain Extension	21EBX-300 <sup>2</sup>	182.8	187.6	4.8	35.10
		incl. 183.2	183.7	0.5	105.00
		and 184.3	184.7	0.4	270.00
	21EBX-301 <sup>2</sup>	143.8	150.1	6.3	12.64
		incl. 145.7	148.7	3.0	25.70
		incl. 146.6	147.3	0.7	85.35
22EBX-103 <sup>1</sup>	159.5	174.1	14.6	2.21	
	incl. 160.2	168.7	8.5	3.22	
	incl. 164.7	168.7	4.0	5.05	
	361.9	364.1	2.2	32.95	
	incl. 362.3	362.8	0.6	123.50	
Main Mine	23MM-004 <sup>1</sup>	139.2	376.8	237.6	0.69
		incl. 285.9	294.2	8.3	2.39
		and 336.5	350.7	14.2	1.64
		and 356.2	368.8	12.6	1.61

<sup>1</sup>Drill core lengths are reported here. True widths for these intervals have not been established

<sup>2</sup>Drill core lengths are reported here. Intercepts for the main Bain vein are 80-95% of true width



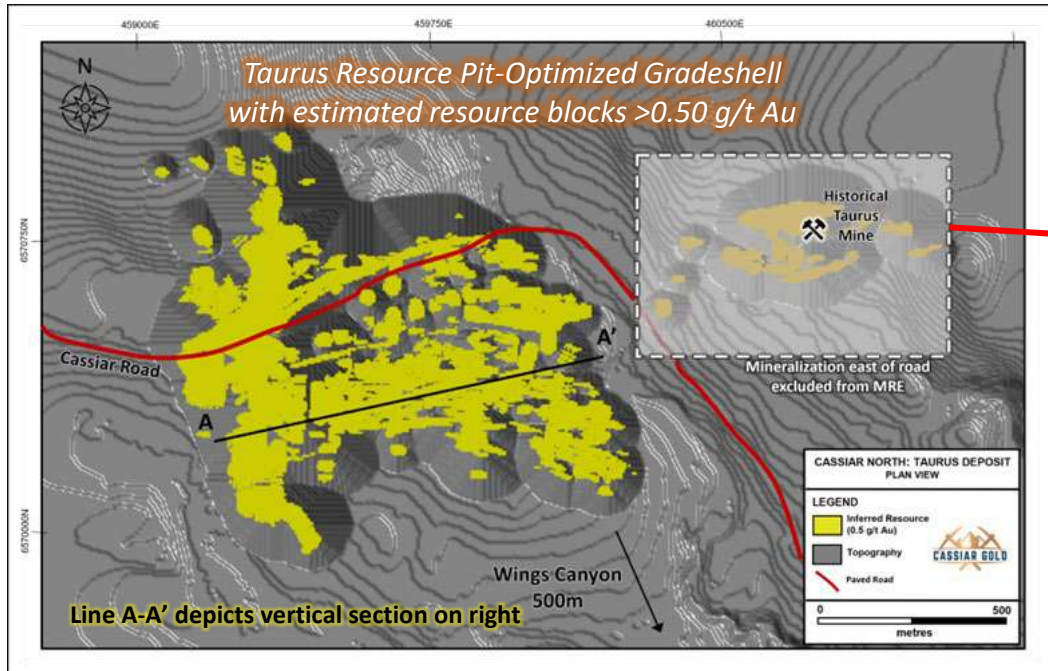
# Cassiar North: Taurus Deposit Open for Expansion



## 2022 NI 43-101 Taurus Inferred Mineral Resources<sup>1</sup>

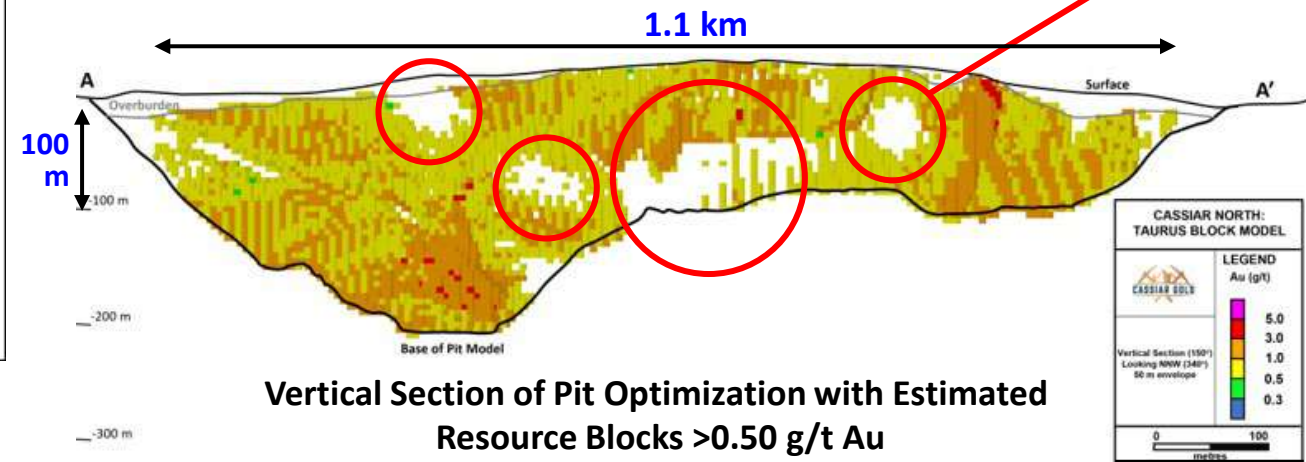
Resource Category	Cut-off Au g/t	Tonnes	Au g/t	Au oz
Inferred	0.40	44,600,000	1.03	1,480,000
<b>Inferred</b>	<b>0.50</b>	<b>37,900,000</b>	<b>1.14</b>	<b>1,390,000</b>
Inferred	0.60	32,000,000	1.24	1,280,000
Inferred	0.70	27,000,000	1.36	1,180,000

- 2022 NI43-101 Compliant Inferred Mineral Resource Estimate of 1.4 Moz @ 1.14 g/t Au using 0.5 g/t cut-off grade.<sup>1</sup>
- 90% of ounces occur within 150 m from surface, on average 10 m overburden.
- Open-pittable, pit constrained resource with mineralization to 270 m vertical depth
- Mineralization is largely constrained by drilling with **high potential for resource expansion** laterally, at depth and within the resource open pit shell.
- Taurus East past production: 35,000oz @ 3.8 g/t Au<sup>2</sup> recovered grade from 1981-8



Mineralization at Taurus East is not included in current resource; potential for inclusion in future MRE update

Gaps in resource can reflect lack of drill data in some areas, not necessarily lack of mineralization



Vertical Section of Pit Optimization with Estimated Resource Blocks >0.50 g/t Au

Assumptions: Metal price used was US\$ 1,800/oz Au (Exchange Rate 0.78\$US:1\$C) with process recoveries of 92%. A C\$15/t OPEX mining cost, C\$11/t process cost, and C\$4.50/t G&A cost were used. The constraining pit optimization uses pit slopes of 45°, dilution of 5% and mining recovery of 98%. Strip Ratio is calculated at 4.36:1.

<sup>1</sup> Zelligan, Moors, Jollette April 28, 2022. National Instrument 43-101 Technical Report on the Cassiar Gold Property, prepared for Cassiar Gold Corp.

<sup>2</sup>Taurus MINFILE Production Detail Report, file number 104P 012, BC Geological Survey



# Taurus Deposit: Mineralization Styles



- **Mineralization Type<sup>1</sup>:** Basalt-hosted, low-sulfide gold-bearing veins and well-defined alteration envelopes of quartz, sericite-iron carbonate and pyrite.
- Vein density, alteration intensity and shear zone distribution aid in defining and modeling higher grade corridors of mineralization.



Pyritohedrons near extension vein (T4),  
drill hole 23TA-204



Free gold in extension veins,  
drill hole 22TA-180



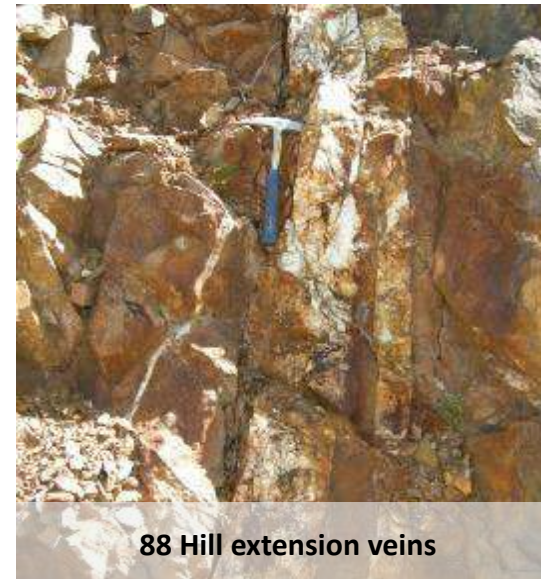
Sheeted veins in discrete T3 carbonate-pyrite  
alteration

## Two Mineralization styles:

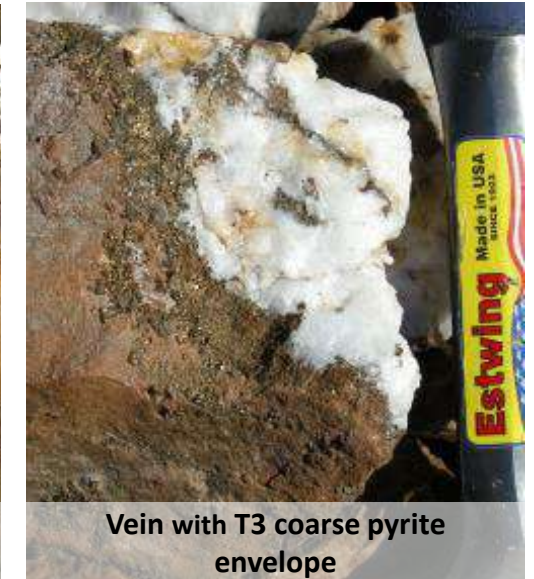
- 1) East-Northeast trending, steeply dipping sets of sheeted quartz extension veins associated with steep, West-Northwest trending shear zones.
- 2) Broad zones of disseminated pyrite-mineralization in carbonate altered mafic volcanic rocks surrounding structures, especially near Taurus West Fault.



Pyritohedrons in basalt from Sable  
zone at Taurus



88 Hill extension veins



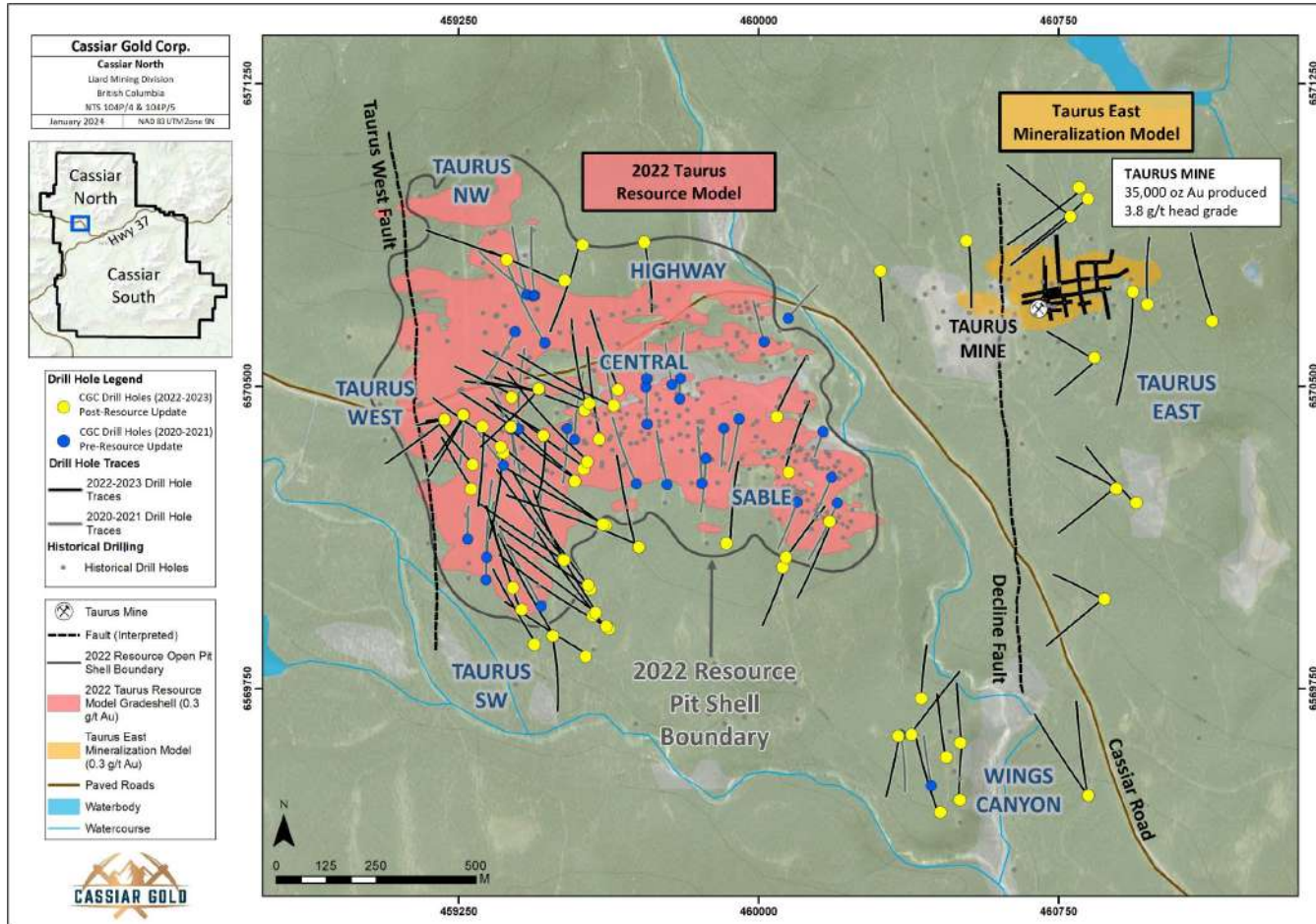
Vein with T3 coarse pyrite  
envelope



# Taurus Deposit: 2022 - 2023 Drill Highlights



## Cassiar Gold Drill Hole Locations



Target Area	Drill Hole	From (m)	To (m)	Length* (m)	Grade (g/t Au)	
Taurus East	22TA-169	4.50	11.10	6.60	<b>22.44</b>	
		<i>incl.</i>	10.30	11.10	0.80	<b>174.5</b>
Taurus West	22TA-176	<b>10.70</b>	<b>108.70</b>	<b>98.00</b>	<b>1.28</b>	
		<i>incl.</i>	41.70	45.80	<b>4.10</b>	<b>12.02</b>
		<i>with</i>	43.80	45.10	1.30	<b>25.87</b>
	22TA-180	177.50	249.10	<b>71.60</b>	<b>1.54</b>	
		<i>incl.</i>	222.00	245.50	<b>23.50</b>	<b>3.68</b>
	22TA-182	194.70	253.50	<b>58.80</b>	<b>1.34</b>	
		<i>incl.</i>	240.20	253.00	<b>12.80</b>	<b>2.41</b>
23TA-187	311.10	334.65	<b>23.55</b>	<b>4.19</b>		
	<i>incl.</i>	317.25	325.05	7.80	6.22	
23TA-206	196.10	374.35	<b>178.25</b>	<b>0.59</b>		
	<i>incl.</i>	271.80	291.35	<b>19.55</b>	<b>2.23</b>	
Taurus Southwest	22TA-161	<b>8.20</b>	<b>180.10</b>	<b>171.88</b>	<b>0.66</b>	
		<b>28.00</b>	<b>167.40</b>	<b>139.35</b>	<b>0.61</b>	
	<i>incl.</i>	48.70	64.10	15.35	1.31	
23TA-204	<b>13.00</b>	<b>165.10</b>	<b>152.10</b>	<b>0.58</b>		

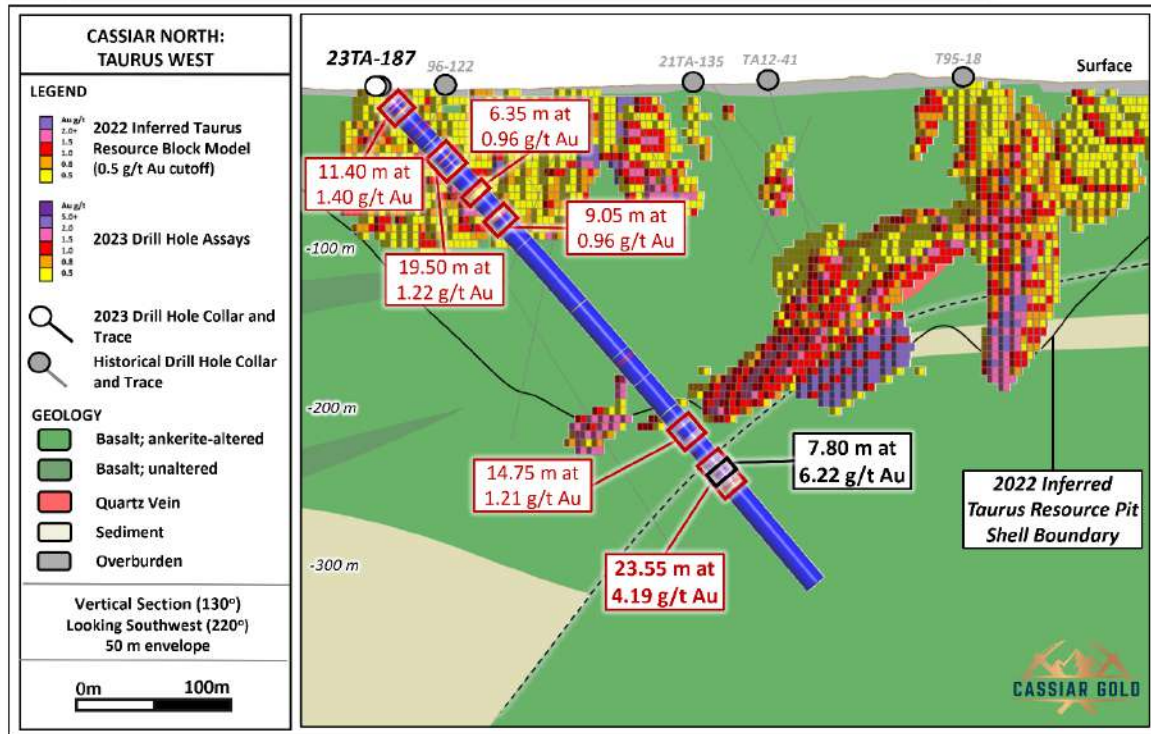
\* Drill core lengths are reported here. True widths for these intervals have not been established

Drill hole location map of exploration and expansion holes relative to the Taurus deposit. Surface projection of the 2022 resource estimate >0.3 g/t Au grade shell is shown for reference (from Zelligan, Moors, Jolette 2022).

# Taurus West & Southwest: Expanding Mineralization

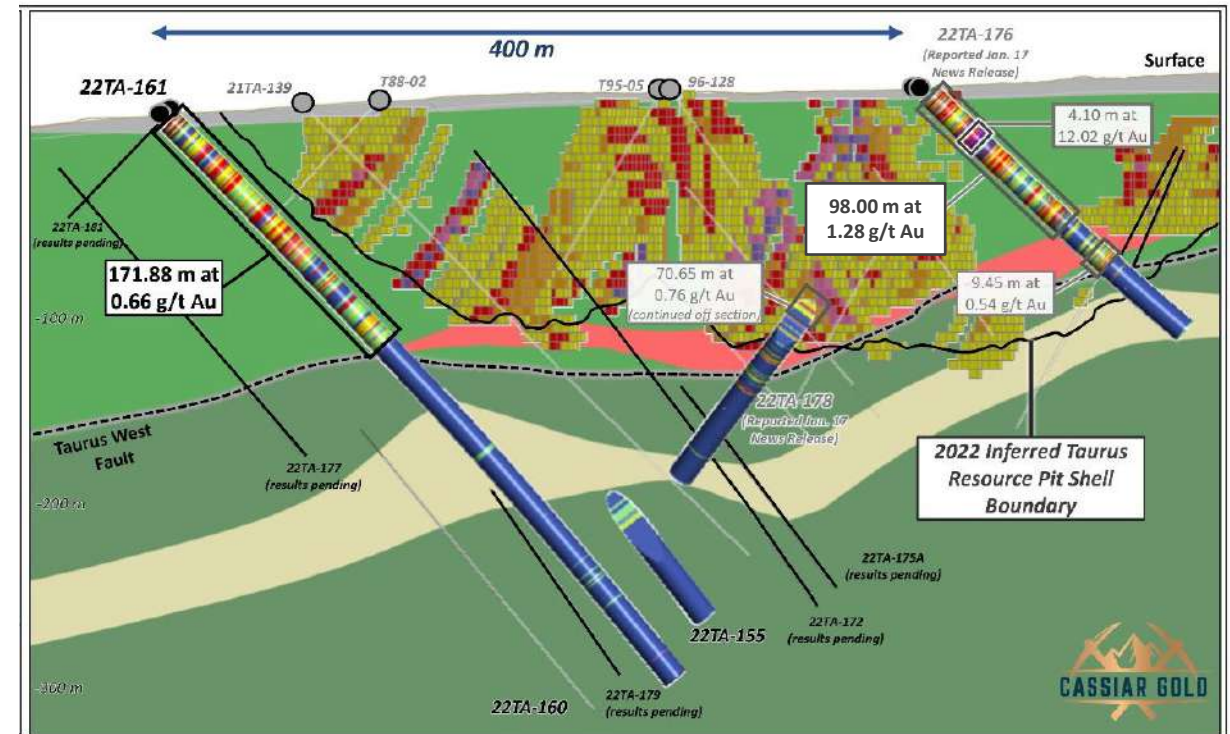


**Extension of Higher Grade Trend below Pit Constrained Resource Intersecting 23.6 m of 4.19 g/t Au<sup>1</sup>**



Vertical section showing 22TA-187 at the Taurus Deposit, looking to the southwest. Assay results in red and higher-grade nested intervals in black are reported in this news release. Section width +/- 25m.

**Infill Drilling Intersecting 98 m of 1.28 g/t<sup>2</sup> within Pit Shell & Step Out 171.9 m of 0.66 g/t Au<sup>2</sup> beyond Pit Constrained Resource**



Vertical section showing 22TA-161 at the Taurus Deposit, looking southwest with the 2022 Taurus Resource Block Model for reference.

<sup>1</sup>Cassiar Gold Expands Gold Mineralization at the Taurus Deposit, Drilling Results Include 23.6 m of 4.19 g/t in the Taurus West Area

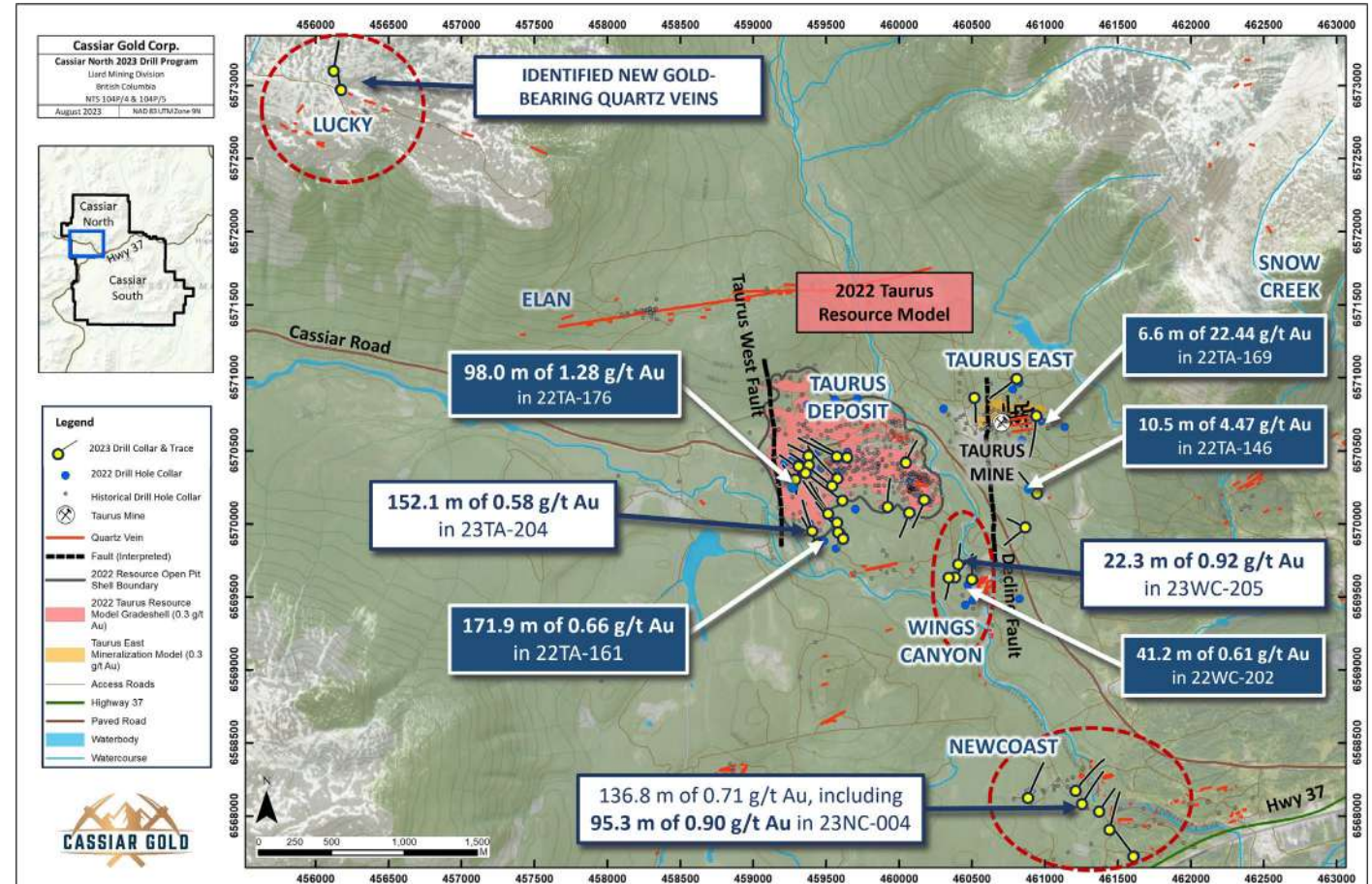
<sup>2</sup>Cassiar Gold Expands Mineralization at Surface Intersecting 171.9 m of 0.66 g/t Au at the Taurus Gold Deposit



# Cassiar North: 2022 + 2023 Drill Program Details



- **23,167 m Taurus Deposit drilling completed;**
  - 9,200 m in 2023
- **~80% focused on 50-100 m step-out holes around the deposit to:**
  - Test for extensions of key mineralized trends and potentially expand the resource laterally.
- **~20% focused on infill, confirmation, and deeper drilling:**
  - Infill drilling will fill in gaps between widely spaced historical holes.
  - Deeper drilling will focus on expanding mineralization at depth.
- **5,212 m drilling at high-priority outlying targets such as Newcastle, Lucky, and step-out holes at Wings Canyon.**



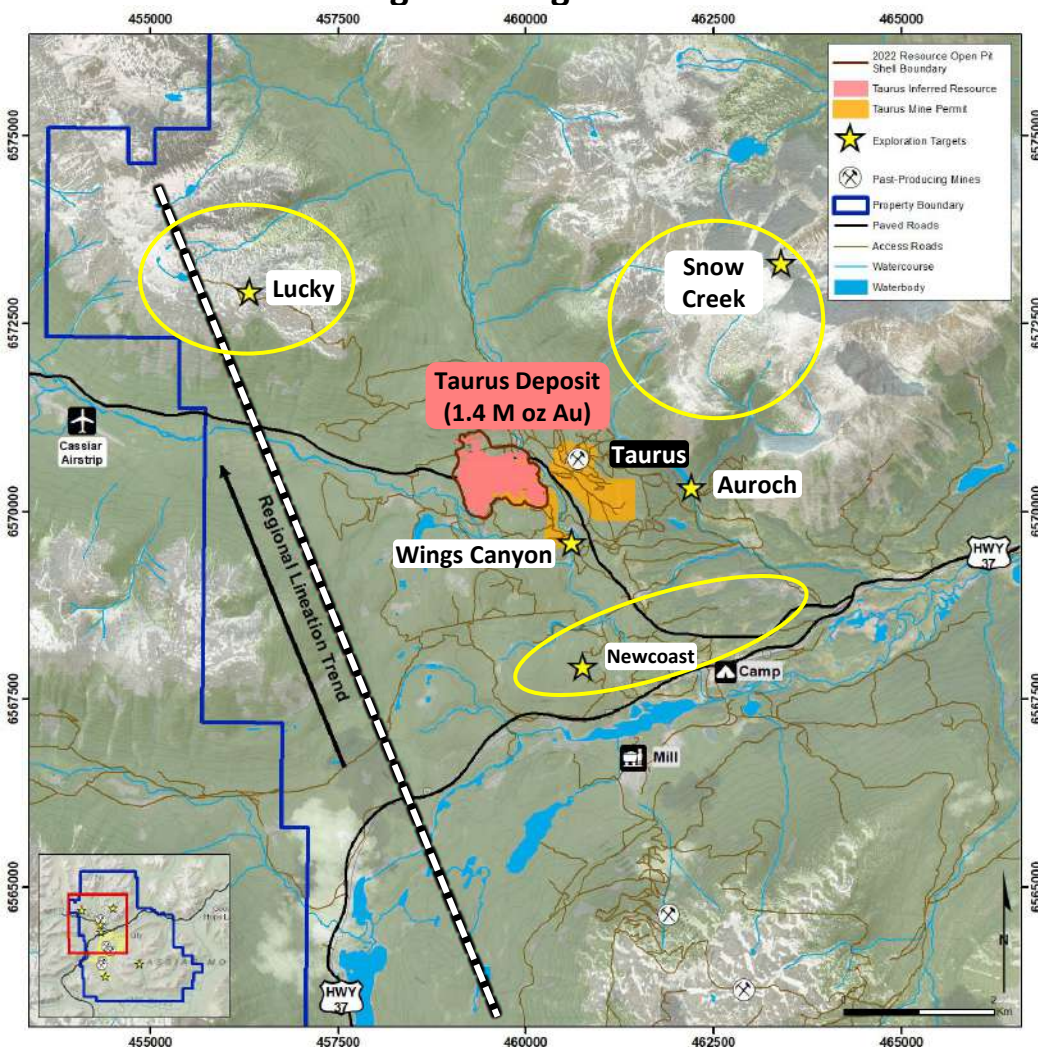
Cassiar North plan map of locations of 2022-2023 drilling at outlying target areas (red dashed circles) relative to the Taurus deposit. Surface projection of the 2022 resource estimate >0.3 g/t Au grade shell is shown for reference (from Zelligan, Moors, Jollette 2022).



# Priority Regional Targets: Underexplored & Highly Prospective



## Location of Regional Targets at Cassiar North



- Newcoast** - ~3 km long east-west corridor with shallow and outcropping quartz veining, pyrite, and silica, sericite, and iron carbonate alteration; similar to Taurus. Very limited historical drilling with samples exceeding 5 g/t.<sup>1</sup>
- Lucky** - Large multi-element soil geochemical anomaly defined over 1 km area 4 km west of Taurus Deposit. Numerous quartz veins exposed within an area of strong iron-carbonate altered mafic volcanics and listwanite. **2019 surface rock samples assayed 313.0 g/t Au and 151.5 g/t Au.**<sup>2</sup>
- Snow Creek** - Quartz veining, pyrite, and varying amounts of silica, sericite, and iron carbonate similar to the Taurus Deposit.

Newcoast



Lucky



Snow Creek



<sup>1</sup> Assay results from 2006 Assessment Report on the Table Mountain and Taurus Property, AR29235, Event Number: 4145387, prepared by Mike Glover.

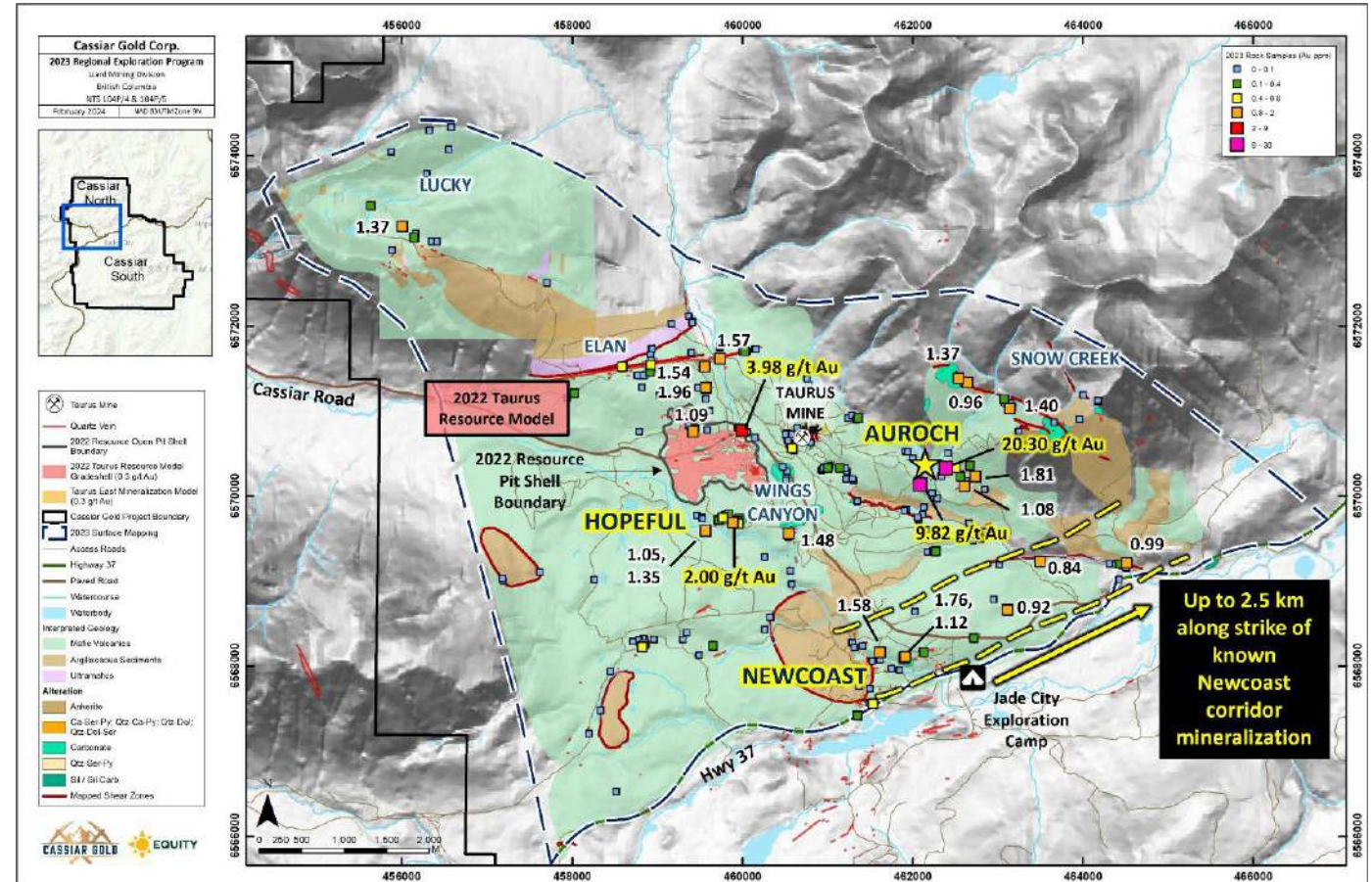
<sup>2</sup> Zelligan, Moors, Jollette April 28, 2022. National Instrument 43-101 Technical Report on the Cassiar Gold Property, prepared for Cassiar Gold Corp



# 2023 Surface Sampling & Mapping Results



- **Surface rock sample results:**
  - **Discovered new gold occurrence**
    - **Auroch mineralized showing,**
    - Assays returned: **9.82 g/t Au grab sample** with **visible gold** and **20.30 g/t Au in float.**
  - **Expanded surface mineralization** at multiple regional prospects, including:
    - **Newcoast target corridor:** up to **2.5 km** to the east along strike, and
    - **Hopeful prospect:** up to **250 m** to the southwest.
  
- **Geological Mapping:**
  - Identified/mapped a series of major northwest trending shear zones;
  - potential mineralization-controlling features.



2023 geological map with grab sample results, relative to the Taurus Inferred Mineral Resource.

# 2023 Soil & Induced Polarization Survey Findings

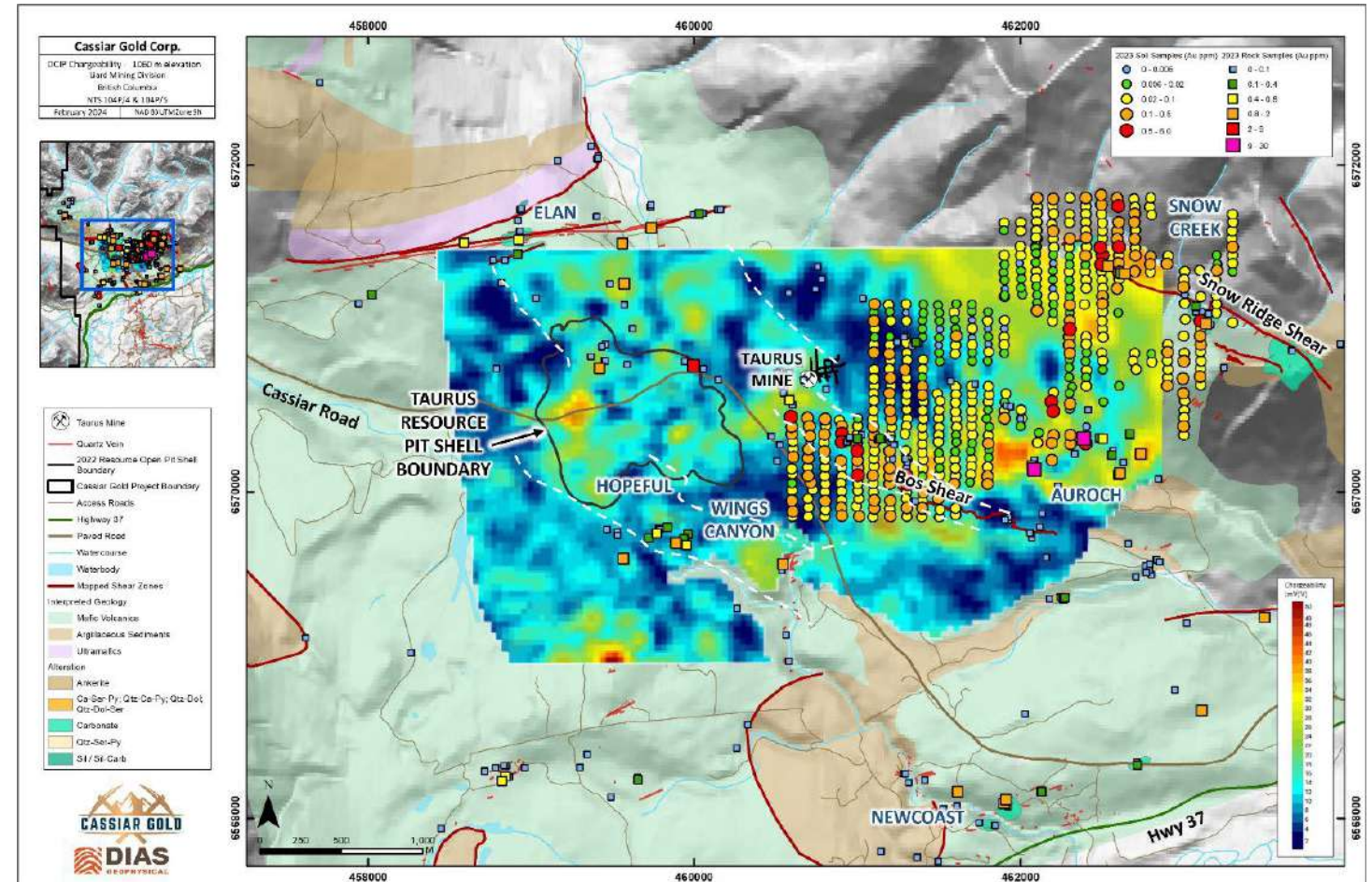


## Soil survey results:

- Identified **multiple gold-in-soil anomalies**
- coincident with major mapped structural trends and limited surface rock sample data, and
- remain open** beyond the extent of the survey sample grid.

## DCIP Survey

- Lineaments suggest a series of NW and NE trending features,
  - Occur concordant to the orientation of mineralization-controlling structures elsewhere in the project area.
  - Coincide with areas of alteration and vein development that have the potential to host or control additional areas of mineralization.

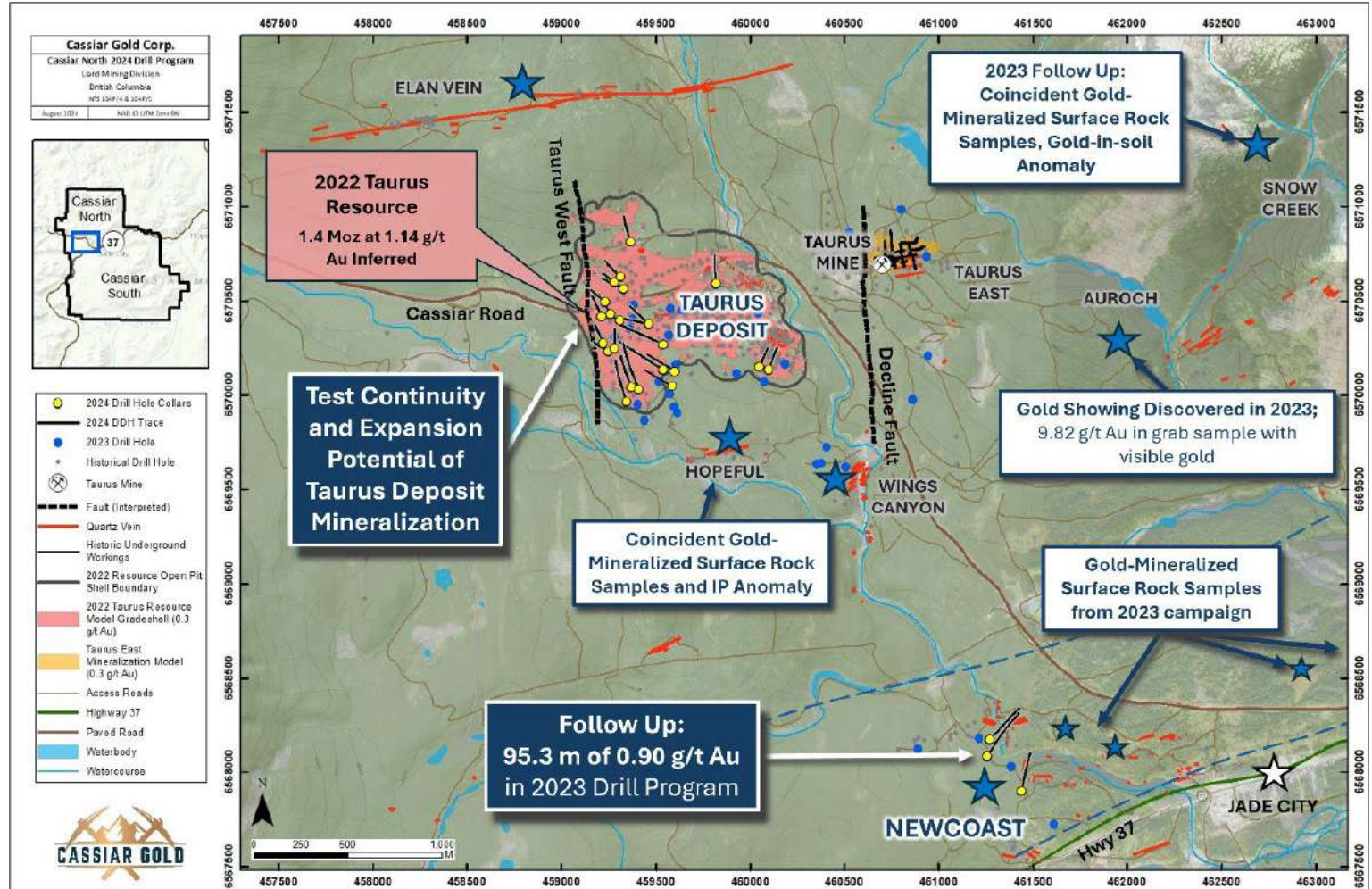




# 2024 Drill Program



- Drill campaign expanded beyond initial 5,000 m Phase 1 scope**
  - 7,168 m of core from 30 drill holes
  - Taurus deposit:**
    - 5,923 m of drilling in 27 drill holes
    - Step out drilling (~20%) and infill holes at untested areas between resource blocks (~80%)
  - Newcoast regional target:**
    - 1,245 m of drilling in 3 drill holes
    - Expansion drill holes as follow up to 2023 program results



Cassiar North 2024 drill campaign drill hole locations plan map of infill and expansion drilling at the Taurus deposit, as well as exploration drill holes at the Newcoast regional target. Surface projection of the 2022 resource estimate >0.3 g/t Au grade shell is shown for reference (from Zelligan, Moors, Jolette 2022)



# 2024 Geophysical Surveys & Field Program



## IP Survey

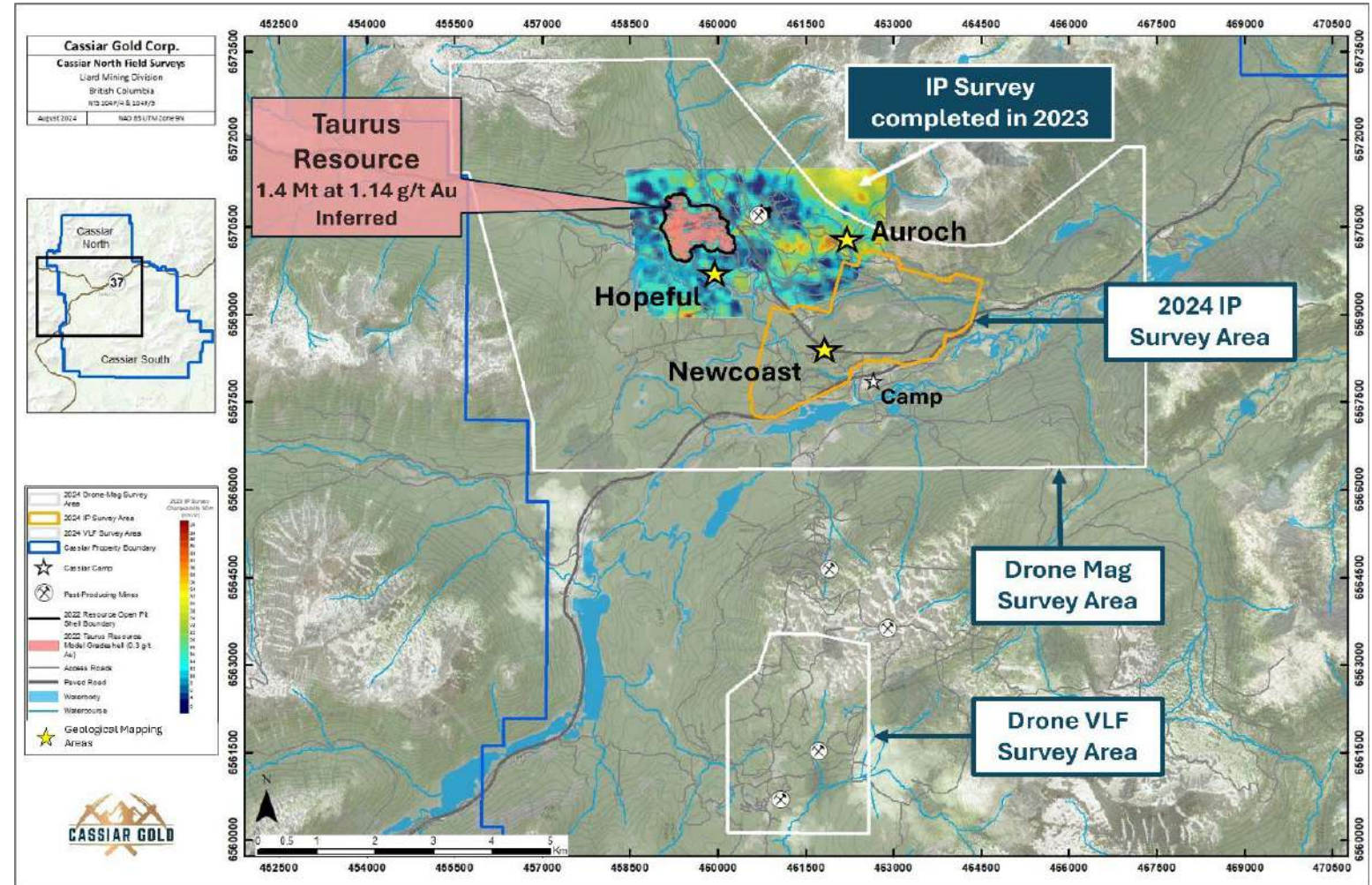
- Data collection phase complete
- ~6 km<sup>2</sup> footprint
- 175 m line spacing; 75 m station spacing

## Planned Drone-supported Surveys

- Mag: ~60 km<sup>2</sup> footprint; 50 m line spacing
- VLF-EM: ~7.5 km<sup>2</sup> footprint; 50 m line spacing

## Geological Mapping & Surface Sampling

- Mapping/sampling over known & recently identified gold prospects
- To be complemented by soil sampling in select areas



Map of location and extent of 2024 areas subject to geophysical surveys and field mapping/sampling. Stars indicate areas of focus for geological mapping and sampling. Surface projection of the 2022 resource estimate >0.3 g/t Au grade shell is shown for reference (from Zelligan, Moors, Jollette 2022)



# Experienced Leadership Team

Click [HERE](#) to meet more of the team!



**STEPHEN LETWIN**  
Chairman



- +30 yrs in extractive resource sector
- President & CEO of IAMGOLD (CAD\$2Bn mkt cap) from 2010-2020
- Previously Executive VP Gas Transportation & International with Enbridge Inc., President & COO of TransCanada Energy



**STEVE ROBERTSON**  
Director



- +30 yrs experience in exploration and mine operations in British Columbia as a professional geologist
- Received 2016 E.A. Scholz Award for Excellence in Mine Development for his role in the development/permitting of Imperial Metals' Red Chris mine
- Former President and CEO of Sun Metals



**JAMES MAXWELL**  
Director



- +20 yrs experience as professional geologist
- VP Exploration for First Mining Gold and former Exploration Director of Sabina Gold & Silver Corp
- Co-Award winner of North-western Ontario Prospectors Association Discovery of the Year award



**CHRIS STEWART**  
Director



- +30 yrs as a Mining Engineer & Turnaround Specialist
- Track record for successful new mine advancement and development and optimization of existing mines in Canada and abroad



**MARCO ROQUE**  
President & CEO



- +17 yrs of international finance experience including banking, capital markets, venture capital and corporate advisory
- Co-founder of Reyna Silver & Infinitem Copper; Advisor of Emerging Markets Capital, a Hong Kong Mining Investment firm
- Former banker at Millennium BCP and Barclays Capital



**JILL MAXWELL**  
VP Exploration



- +13 yrs in the precious metals sector
- A wide range of experience in mineral exploration from greenfields programs through to feasibility level studies for orogenic gold and Ni-Cu-PGEs, including at Sabina Gold & Silver Corp.'s Back River Project (now owned by B2Gold) and North American Palladium Ltd.'s Lac des Iles Mine through and following its acquisition by Impala Platinum



**DAVE RHYS**  
Chief Technical Advisor



- +28 yrs of experience in the mining industry as a renowned orogenic gold expert and consultant for major mining companies
- Conducted direct, field-based geological studies on deposits collectively containing >600Moz and >2Boz Ag including deposits in the Carlin Trend and the Abitibi Greenstone Belt



**JORGE RAMIRO MONROY**  
Capital Markets Advisor



- Founder and Managing Director of Emerging Markets Capital, a mining focused investment company based in Hong Kong
- Co-Founder and CEO of Reyna Silver
- Director of Sierra Madre Gold and Silver
- Founding Director of Prime Mining



# Committed to Social & Environmental Responsibility



Cassiar Gold acknowledges, respects, and supports the rights of the Kaska Dena First Nations on the lands and communities where we operate.

Since Cassiar Gold has started managing the project in 2019, CGC has continuously **engaged with the local community to support initiatives** such as the **construction of a local hockey rink and team sponsorship, local hires, site clean up/assessments, educational training supports and procurement of core boxes from the Dease River Development Corporation** amongst other partnerships. **ESG reporting and initiatives** are in place to continually monitor and improve our impacts to the surrounding community and environment.



Organizations that our team members are actively involved with include the **Chamber of Mines, Community Futures and Streamkeepers Society.**



## Community Engagement

Our company and crew are dedicated to the communities we live in, the communities we work with and the lands we work on. We strive for our personal and professional lives to reflect our values: volunteering our time and resources for several local groups & organizations and maintaining strong community pride.

## Environment

We pride ourselves on learning, listening and collaborating on the highest level of environmental standards. Our partnerships with local environmental groups expand our knowledge and resource base to constantly strive for the best in our personal lives, our office operations and our field work.



## Local Economic Impact

From the people we hire, to the businesses we support, we are connected to the local economy. Local, non-discriminatory hiring and the use of local suppliers and businesses connect us with our communities. Our team members are dedicated to strengthening the local economy, not only in our purchasing and hiring, but also through our volunteer organizations and lifestyles.

- ✓ [2021 & 2022 Sustainability Report](#)
- ✓ [2021 & 2022 ESG Scorecard](#)



# Share Structure & Ownership Mix



## Capital Structure

TSX.V: GLDC | OTCQX: CGLCF | FRA:756

Shares Outstanding	126,146,574
Options, RSUs/DSUs <sup>1</sup>	11,868,668
Warrants <sup>2</sup>	37,974,036
Fully Diluted	175,989,278
Price per Share*	C\$0.27
Market Capitalization*	C\$34.1 M
Cash Position (Sep 3, 2024)	C\$7.1 M

\*as of August 30, 2024

## Shareholders

Sprott



DELBROOK  
CAPITAL

IXIOS  
Asset Management



MYRMIKAN CAPITAL LLC

Insiders/Advisors  
12%



Institutional  
29%

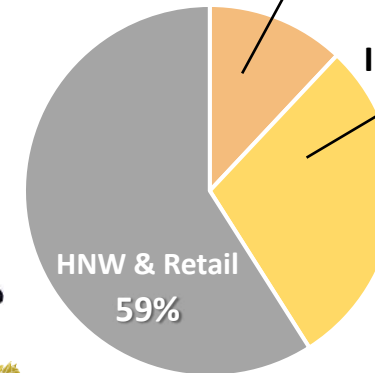


L1 CAPITAL

PALOS  
MANAGEMENT



KINGS ROAD  
CAPITAL



M3SC FUND

ORCA  
CAPITAL

CRESCAT CAPITAL  
VALUE-DRIVEN PERFORMANCE

EMC  
Emerging Markets Capital



THE MANCAL GROUP

MCM INVESTMENT PARTNERS

TERRACAPITAL

懿德资产管理  
EDE ASSET MANAGEMENT INC

SECTOR INVESTMENT MANAGERS  
INVESTING IN THE RESOURCES GIANTS OF TOMORROW

BALLINGAL INVESTMENT ADVISORS

## Analyst Coverage, Notes, and Newsletters



Jeff Clark

jeff\_clark@att.net



Timothy Lee

tlee@redcloudsecurities.com



Dave Storms, CFA

dave@stonegateinc.com



Lobo Tiggre

l@independentspeculator.com



Steve Searles

ssearles@cgf.com



Brien Lundin

brien\_lundin@jeffersoncompanies.com

<sup>1</sup> Options priced between \$0.345-\$0.79 with expiry between Aug 2025 to May 2029. See Appendix for more details.

<sup>2</sup> Warrants priced between \$0.50-\$0.70 with expiry between May 2025 to May 2026. Potential proceeds from warrant exercise is \$20.3M. See Appendix slide for more details



# Plans and Catalysts



## 2024

## 2025

Q3

Q4

Q1

Q2

Taurus Geological & Geochemical Domain Work

2024 Exploration Program

2024 Exploration Program Drill Results

Potential Resource Update

2025 Exploration Program





# Why Cassiar Gold? Checking the Boxes



## INFRASTRUCTURE & PERMITS IN SAFE JURISDICTION

- ✓ 2 Mine permits, bisected by provincial highway 37, 160 km of access roads, fully owned & permitted 300 tpd mill, 17 portals, 25 km underground workings, power & water access, permanent camp already in place
- ✓ 100% owned, 59,000-hectare district-scale property in safe & stable British Columbia, Canada



## SIGNIFICANT EXPANSION & DISCOVERY POTENTIAL

- ✓ **Potential to expand Taurus Resource of 1.4 Moz @ 1.14 g/t Au<sup>1</sup> in most directions laterally & at depth**
- ✓ **Potential for multiple bulk-tonnage/Taurus style satellite deposits** across the land package
- ✓ **Potential to expand multiple high-grade vein targets grading 10-20 g/t Au<sup>1</sup> along strike & down dip**, with **additional discovery potential** for multiple blind parallel as well as stacked shear vein systems



## EXPERIENCED LEADERSHIP TEAM

- ✓ Well rounded & extremely successful group of geologists, engineers, operators, marketing and capital markets professionals with 250+ collective years in discovering, building, operating, and selling multi-billion dollar mining projects all over the world



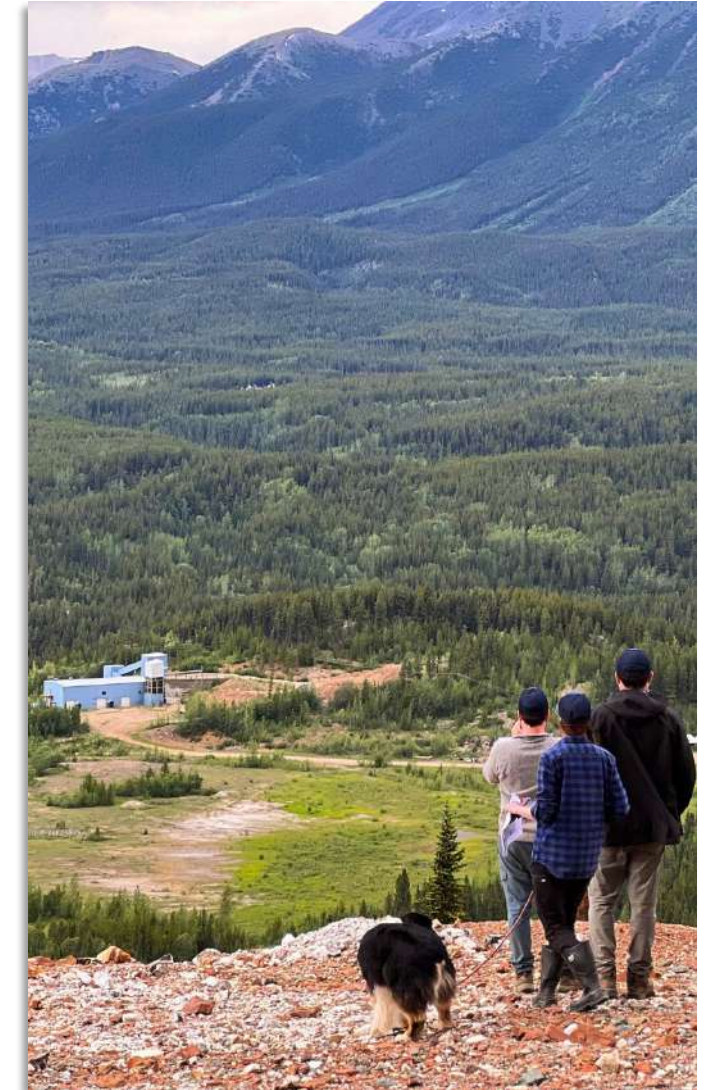
## COMMUNITY SUPPORTED & ENVIRONMENTALLY COMMITTED

- ✓ **Collaborative & mutually supportive relationship with Community and Kaska Dena First Nations**, including the training, hiring and development of local workforce and contractors
- ✓ Committed to advancing the projects under the highest ESG practices with continuous & transparent reporting



## UNDERVALUED WITH TREMENDOUS UPSIDE POTENTIAL

- ✓ **C\$34.1 M Market Cap\*** with significant leverage to the gold price, well capitalized, strong institutional support
- ✓ Focused on **growing & de-risking** the project to **maximize Acquisition/Sale value** via **M&A Exit** strategy
- ✓ Strategic optionality to “bootstrap” to production leveraging **existing skillset, infrastructure and mine permits**





TSX.V:GLDC | OTCQX:CGLCF | FRA:756

Follow us on:



[@CassiarGold](https://twitter.com/CassiarGold)



[Cassiar Gold Corp](https://www.linkedin.com/company/cassiar-gold-corp)



[Cassiar Gold Corp](https://www.facebook.com/CassiarGold)



[@CassiarGold](https://www.instagram.com/CassiarGold)

## Cassiar Gold Corp.

Suite 450 – 800 West Pender Street  
Vancouver, BC, V6C 2V6, Canada

### Contact:

E-mail: [ir@cassiargold.com](mailto:ir@cassiargold.com)

Direct: +1 (250) 212-2122

Website: [www.cassiargold.com](http://www.cassiargold.com)





TSX.V:GLDC | OTCQX:CGLCF | FRA:756



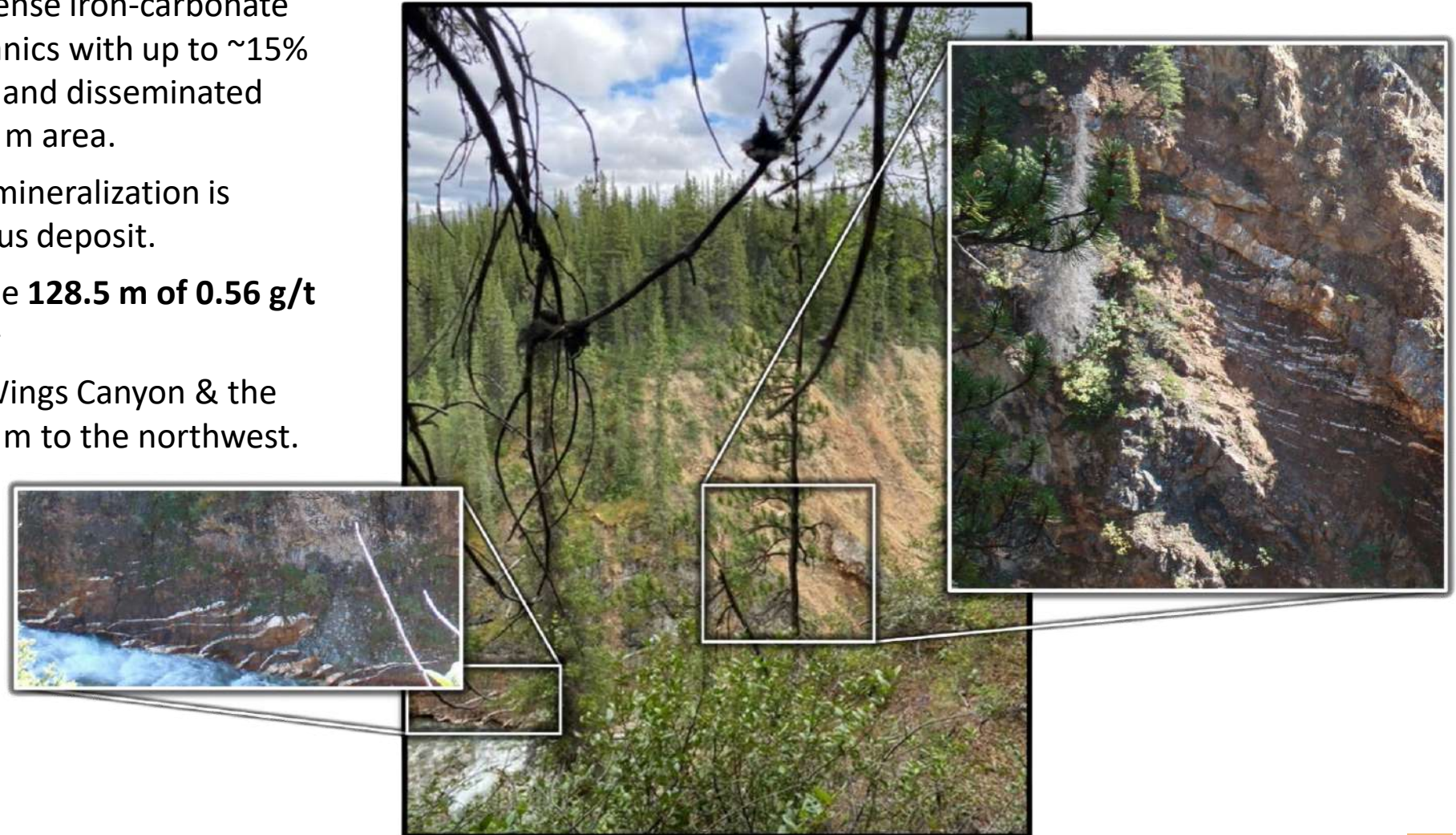
# Appendix



# Cassiar North: Wings Canyon



- **Wings Canyon** – An area of intense iron-carbonate and sericite altered mafic volcanics with up to ~15% narrow sheeted quartz veining and disseminated pyritohedrons over ~500 x 180 m area.
- Alteration, veining & sulphide mineralization is similar in character to the Taurus deposit.
- Historical drill intercepts include **128.5 m of 0.56 g/t Au** and **90.6 m of 0.55 g/t Au**.<sup>1</sup>
- Limited exploration between Wings Canyon & the Taurus deposit which lies ~500 m to the northwest.





# Cassiar North: Snow Creek



- **Snow Creek** - Quartz veining, pyrite, and varying amounts of silica, sericite, and iron carbonate similar to the Taurus Deposit.







Examples of east-west trending sheeted vein sets with gold-bearing iron carbonate and sericite alteration envelopes observed in outcrop from the Newcastle target area at Cassiar North.

<sup>2</sup> Assay results from 2006 Assessment Report on the Table Mountain and Taurus Property, AR29235, Event Number: 4145387, prepared by Mike Glover.

- Approximately ~3 km long east-west corridor with shallow and outcropping quartz veining, pyrite, and silica, sericite, and iron carbonate alteration
- Rocks and Quartz veining are similar in character to those observed at the Taurus deposit, 2.5 km to the north of Newcastle
- Very limited historical drilling with samples exceeding 5 g/t.<sup>1</sup>
- Six drill holes totaling 2,172 m drilled at Newcastle by Cassiar Gold during the 2023 field season
- **Three drill holes totaling 1,245 m drilled at Newcastle in 2024**



# 2022 + 2023 Exploration Program Overview



## Drill Campaign

Project Area	Drill Metres	Description
<b>Taurus Deposit (Cassiar North)</b>	23,167 m	<ul style="list-style-type: none"> <li>~80% focused on 50-100 m step-out holes around the deposit to test for extensions of key mineralized trends and potentially expand the resource laterally.</li> <li>~20% focused on infill, confirmation, and deeper drilling. Infill drilling will fill in gaps between widely spaced historical holes. Deeper drilling will focus on expanding mineralization at depth.</li> </ul>
<b>Outlying Targets</b>	5,212 m	<ul style="list-style-type: none"> <li>Drilling at high-priority regional targets such as Newcastle, Lucky, and step-out holes at Wings Canyon.</li> </ul>
<b>Cassiar South</b>	11,983 m	<ul style="list-style-type: none"> <li>Drilling focused on testing for blind parallel vein systems, known vein extensions, and vertical stacking of favourable stratigraphy.</li> </ul>

## Exploration Fieldwork

- Mapping and sampling work over a 34km<sup>2</sup> area including various regional targets such as Newcastle, Elan, Snow Creek, and Lucky with over 300 grab samples collected.
- Soil sampling program over a 3km<sup>2</sup> area from Taurus East to Snow Creek regional target with over 480 samples collected.
- Induced polarization (IP) survey over an 11km<sup>2</sup> area at Cassiar North.

## Research and Development (ongoing)

- Geological domaining at Taurus – initial petrologic and petrographic review, leading to DMIS; LECO sulphur and cyanide soluble gold analysis.

# Cassiar South: Bain Vein Drill Highlights



- Bain vein system produced 24,000 ounces of gold at an average grade of 13.71 g/t Au from 1993 to 1995.<sup>1</sup>
- Historical drilling by previous operators in 1990/91, 2002, 2008 and 2009 in unmined areas returned significant mineralized intercepts, demonstrating the continuation of the vein system to the east to form a 1.5 km long corridor of known high-grade mineralization (see table on right).
- The area was subject to additional mine development in 2009 to within 50 m of the unmined East Bain vein, allowing for ease of potential future underground and mining access.

<sup>2</sup>Drill core lengths reported in the table on the right for **2021 East Bain/East Bain Ext drillholes** are ~80-95% of true width.

<sup>3</sup>Pre-2021 composites calculated using historical assay data. Source documents for historical program details are as follows:

- Bain, J., (1991) Erickson Gold Mining Corp., Geophysical, Geological and Diamond Drilling Report On Exploration Conducted In 1990 And 1991 In The Cusac Area, Erickson Gold Mine Property, Cassiar District, Liard Mining Division Volume I. Assessment Report 21,547. May 30, 1991.
- Glover, M.J., (2002) Cusac Gold Mines Ltd., Table Mountain Gold Property, Diamond Drilling Report, Nu-Tara and Cordoba Claims, Liard Mining Division, East Bain Vein, 2002 Field Season. Assessment Report 27,079. December 3, 2002.
- Van Bui, P., (2009) Hawthorne Gold Corp., 2008 geochemical sampling, geophysics, and diamond drilling assessment report for the Cassiar Gold Property, McDame Creek area, Liard Mining District, Northern British Columbia. Assessment Report 30,623. March 6, 2009.

Significant unmined historical and 2021 drill results in the unmined Eastern Bain corridor with grades of >10 g/t Au (*denotes Cassiar Gold drill holes)						
Target area	Drill Hole <sup>3</sup>	From (m)	To (m)	Length <sup>2</sup> (m)	Grade (g/t Au)	
East Bain	C90-340	146.55	148.00	1.45	52.19	
	C90-357	156.40	158.70	2.30	17.28	
	C90-359	140.30	143.00	2.70	34.99	
	C91-371	150.40	153.00	2.60	10.94	
	C91-373		154.95	158.30	3.35	21.71
				incl.	0.90	71.57
	O2BG-02	170.20	172.80	2.60	41.30	
	O2BG-03		126.20	132.80	6.60	6.65
				incl.	2.60	13.02
	O2BG-04	186.6	188.8	2.20	8.34	
	BNS-0003	150.32	157.2	6.88	12.45	
	BNS-0005	111.83	115.72	3.89	10.50	
	BNS-0006	134.82	139.01	4.19	4.35	
	BNS-0007	125.10	128.40	3.30	28.61	
	21EB-300*		182.79	187.56	4.77	35.10
			incl.	0.53	105.00	
			and	0.40	270.00	
21EB-301*		143.76	150.13	6.37	12.64	
			incl.	2.95	25.70	
			and	0.78	85.35	
East Bain Extension	21EBX-101*	203.16	207.71	4.55	3.27	
	22EBX-103*		361.89	364.05	2.16	32.95
			incl.	0.6	123.5	

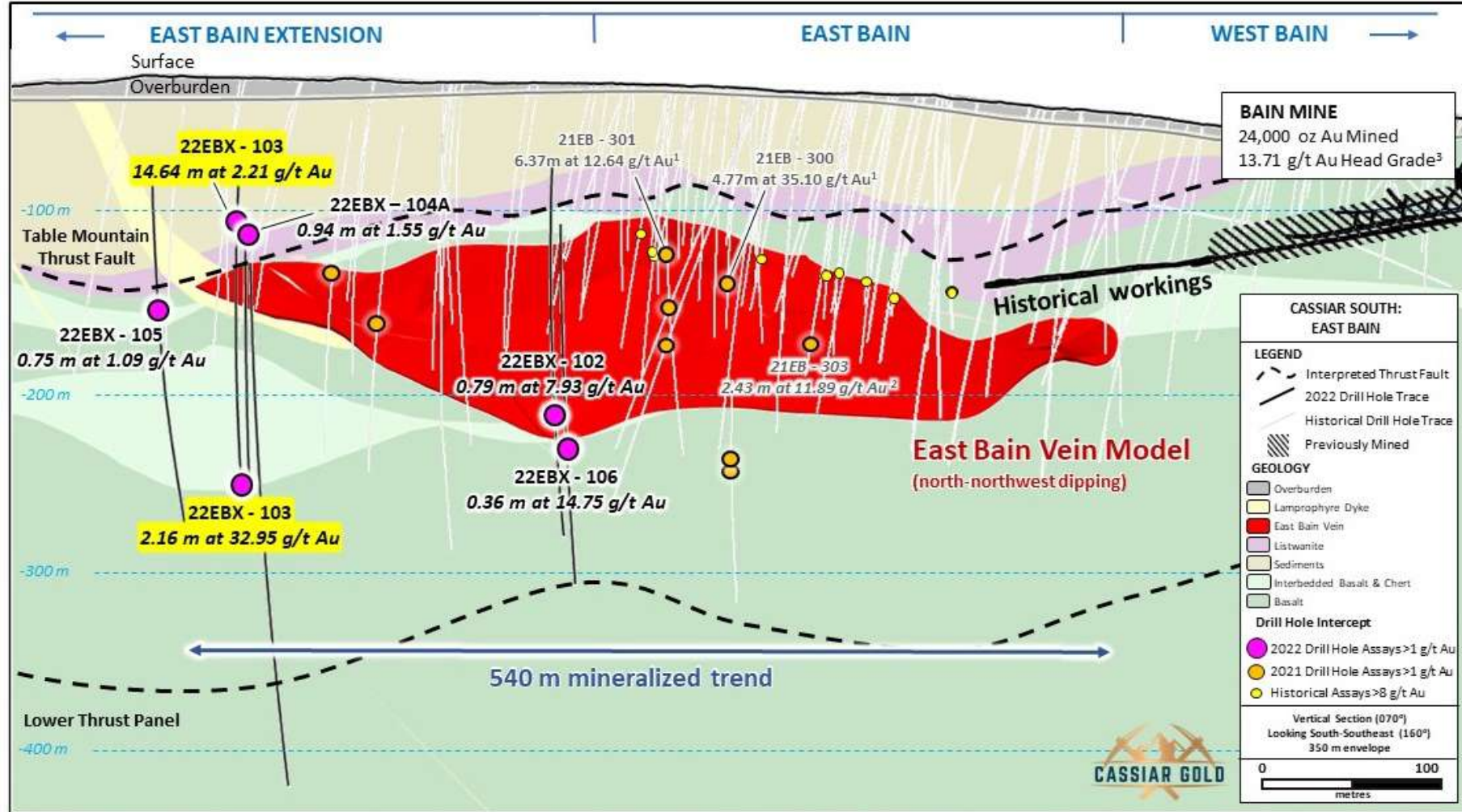


# Cassiar South: Bain Vein Highlight



**04 APR 2023**

Cassiar Gold Extends Gold Mineralization at East Bain Intersecting 14.6 m of 2.21 g/t Au and 2.2 m of 32.95 g/t Au



Visible gold encountered in 22EBX-103

**Vertical long section looking south-southeast at the Bain vein system with 2022 East Bain Extension drill hole results and select 2021 program intercepts.**

# Fully Owned & Permitted Mill



Permitted Erickson Mill Facility, Cassiar Gold Project



- Permitted 300 tpd mill produced **both gravity and flotation concentrates** that were sold offsite. Mill was last in production in 2007<sup>1</sup>, partially refurbished in 2010 and currently in good condition.
- Covered by **Table Mountain Permit (M-127)**.
- Recoveries averaged 93%<sup>2</sup> and up to 96% at Cassiar South.

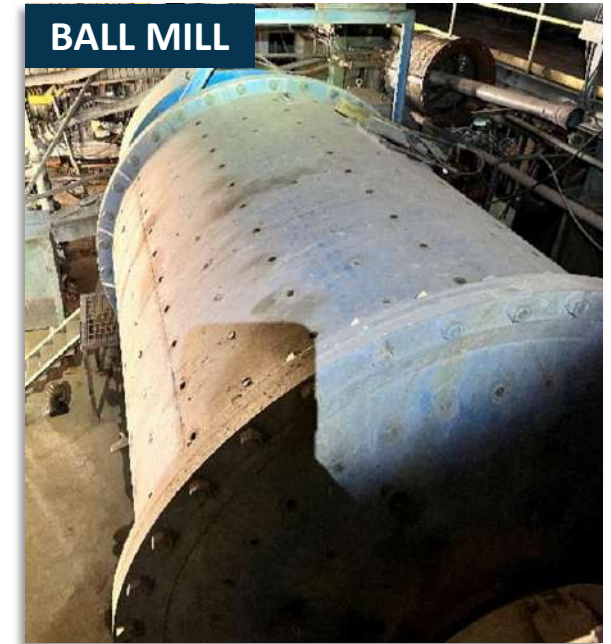
DRYER



SHAKING TABLE



BALL MILL





# Cassiar Property Geology



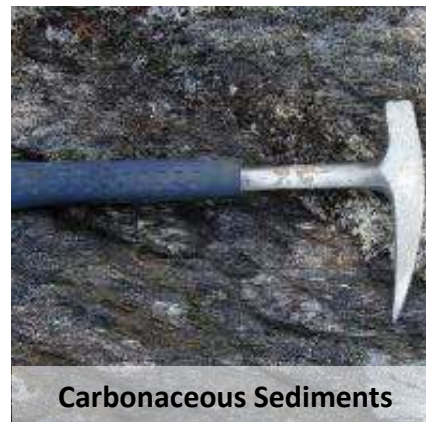
- Host rocks are a stacked sequence of gently dipping competent mafic volcanic rocks layered with weaker altered ultramafic (listwanite) and fine-grained sedimentary units (ophiolite sequence).
- Shallow dipping high strain zones with carbonate-sericite alteration are localized along the weaker listwanite and sedimentary units, acting as structural control and fluid conduits to vein systems.
- Gold-bearing veins formed in stacked mafic volcanic panels in NW-side down, apparent normal shear zones that accommodate displacement between weaker units.



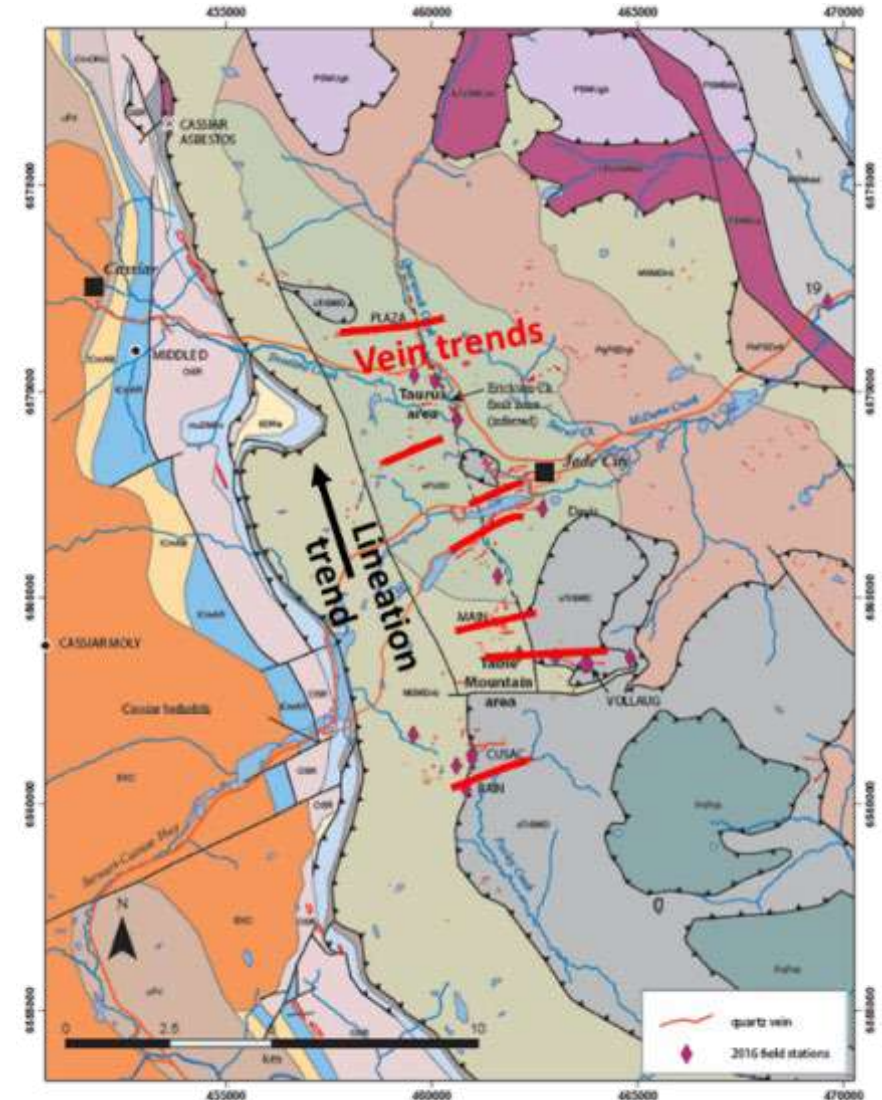
Pillowed Mafic Volcanic



Listwanite

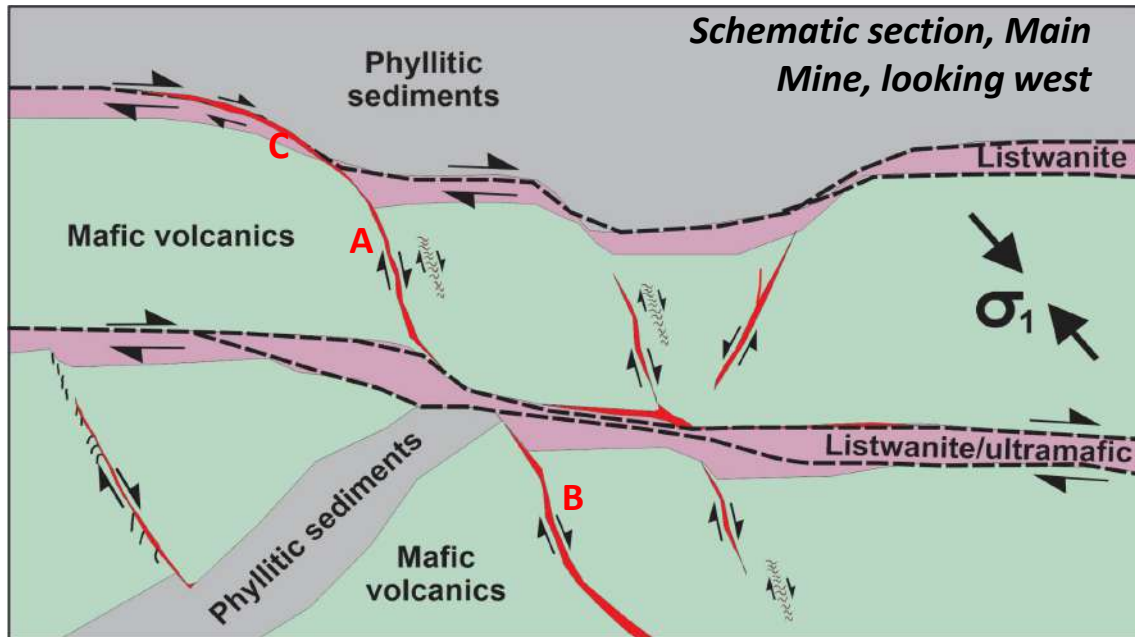


Carbonaceous Sediments





# Cassiar South: Classic Orogenic Gold Veins



- Classic orogenic-style, quartz-carbonate pyrite-tetrahedrite + visible-gold-bearing shear veins with free gold.<sup>1</sup>
- Veins occur in mafic volcanic rocks stacked between low-angle listwanite-bearing thrust surfaces and lenses of fine-grained clastic sediments.
- Mined veins average 2-3 m thick with local strike lengths of >600 m (eg. Vollaug, Bain) and extend 30-150 m down dip.
- Veins are spaced 10s to 100s of meters apart and stacked in multiple mafic units -- **potential for untested parallel and vertical repetition.**



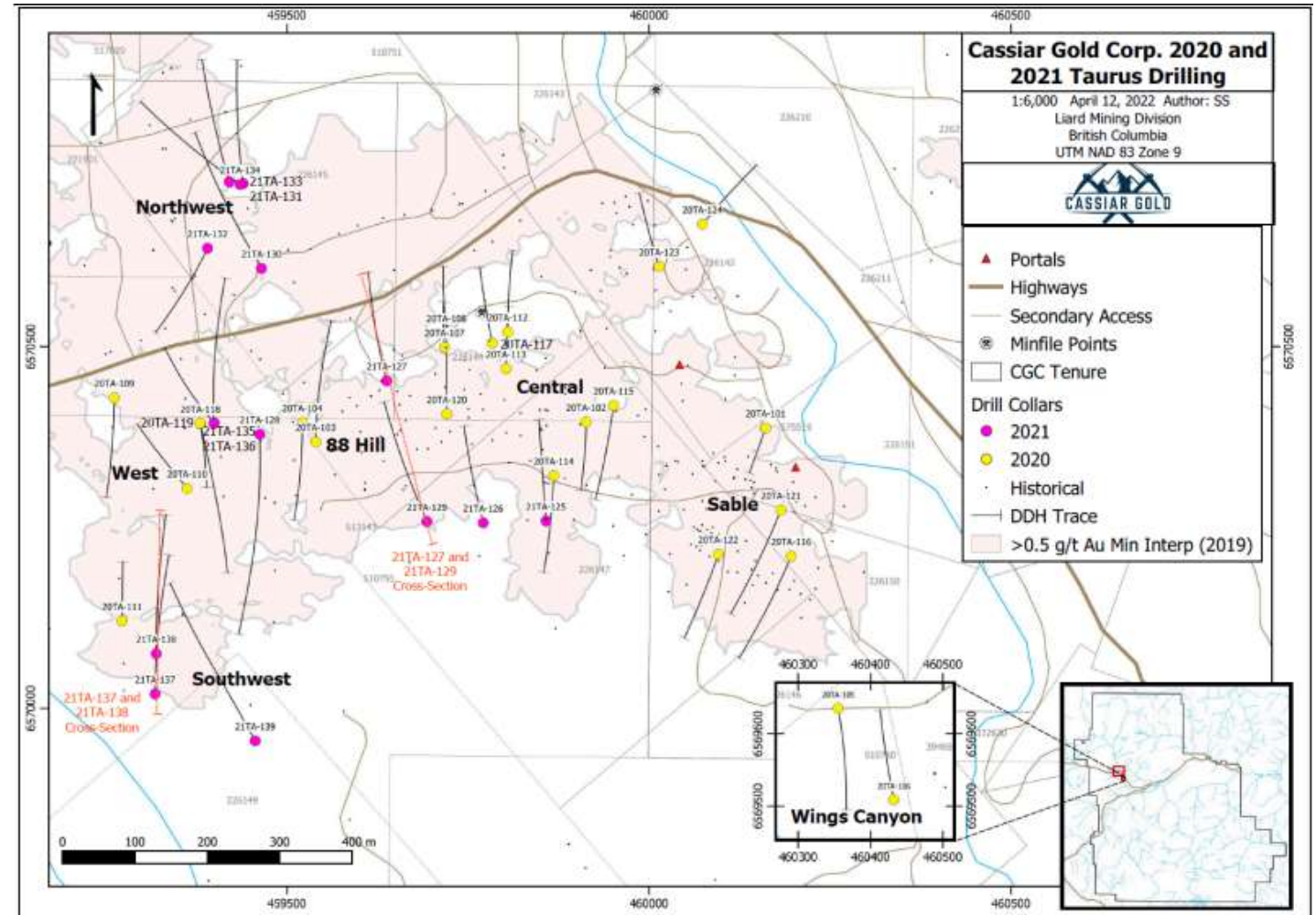


# Basis of 2022 Mineral Resource Estimate



- 2022 NI43-101 Mineral Resource Estimate based on 462 drill holes (~56,500 m) drilled by previous operators and Cassiar Gold.<sup>1</sup>
- Cassiar drilled 39 holes in the Taurus area totaling 8,800 m in 2020 and 2021 intended to:
  - Confirm historical drill data;
  - Infill several widely drilled portions of the deposit; and
  - Test expansion potential through step-out drilling which resulted in the expansion of the deposit footprint.
- Both programs succeeded in confirming higher grade corridors of mineralization and filled in gaps in the mineralization model.

## Cassiar North Taurus 2020 – 2021 Drill Plan



# Cassiar South: 2022 Drill Program Highlight Intercepts



Target Area	Drillhole		From	To	Length	Grade
East Bain Extension	22EBX-103 <sup>1</sup>		159.5	174.1	<b>14.64 m</b>	<b>2.21 g/t Au</b>
		<i>incl.</i>	160.2	168.7	8.52 m	3.22 g/t Au
		<i>incl.</i>	164.7	168.7	<b>3.98 m</b>	<b>5.05 g/t Au</b>
			361.9	364.1	<b>2.16 m</b>	<b>32.95 g/t Au</b>
		<i>incl.</i>	362.3	362.8	0.55 m	<b>123.50 g/t Au</b>
	22EBX-106 <sup>2</sup>		281.6	281.9	0.36 m	<b>14.75 g/t Au</b>
Main Mine	22MM-001 <sup>1</sup>		115.9	131.8	<b>15.9 m</b>	0.98 g/t Au
		<i>incl.</i>	120.6	126.4	5.9 m	1.50 g/t Au
	22MM-002 <sup>1</sup>		255.5	256.1	<b>0.6 m</b>	<b>4.18 g/t Au</b>
			<b>269.0</b>	<b>294.1</b>	<b>25.2 m</b>	<b>0.59 g/t Au</b>
			<b>308.6</b>	<b>332.8</b>	<b>24.2 m</b>	<b>0.61 g/t Au</b>
	22MM-003 <sup>1</sup>		<b>126.9</b>	<b>177.2</b>	<b>50.2 m</b>	<b>0.66 g/t Au</b>
		<b>197.0</b>	<b>212.6</b>	<b>15.6 m</b>	<b>1.22 g/t Au</b>	
		<b>219.8</b>	<b>228.9</b>	<b>9.0 m</b>	<b>1.01 g/t Au</b>	
Vollaug	22VOL-701 <sup>1</sup>		<b>28.0</b>	<b>30.0</b>	<b>2.0 m</b>	<b>4.80 g/t Au</b>
		<i>incl.</i>	29.0	30.0	<b>1.0 m</b>	<b>7.03 g/t Au</b>
	22VOL-701A <sup>1</sup>		<b>28.7</b>	<b>29.9</b>	<b>1.2 m</b>	<b>5.77 g/t Au</b>
Cusac	22CU-407 <sup>1</sup>		<b>21.1</b>	<b>24.5</b>	<b>3.4 m</b>	<b>2.35 g/t Au</b>
		<i>incl.</i>	21.5	22.3	<b>0.8 m</b>	<b>7.20 g/t Au</b>

<sup>1</sup>Drill core lengths are reported here. True widths for these intervals have not been established

<sup>2</sup>Drill core lengths are reported here. Intercepts for the main Bain vein are 80-95% of true width

Visible gold encountered in 22EBX-103



Visible gold encountered in 22WB-203





# Cassiar North: 2022 Drill Program Highlight Intercepts



Target Area	Drillhole	From	To	Length*	Grade
Taurus East	22TA-142	<b>129.8</b>	<b>152.0</b>	<b>22.20 m</b>	<b>1.50 g/t Au</b>
		<i>incl.</i> 132.2	133.0	0.75 m	<b>9.61 g/t Au</b>
	22TA-146	<b>12.9</b>	<b>23.4</b>	<b>10.50 m</b>	<b>4.47 g/t Au</b>
		<i>incl.</i> 13.8	17.0	3.25 m	<b>11.12 g/t Au</b>
		<i>with</i> 15.4	15.9	0.50 m	<b>45.30 g/t Au</b>
		<i>incl.</i> 20.4	21.1	0.75 m	<b>12.65 g/t Au</b>
	22TA-167	226.0	239.7	13.70 m	<b>2.24 g/t Au</b>
22TA-169	4.5	11.1	6.60 m	<b>22.44 g/t Au</b>	
	<i>incl.</i> 10.3	11.1	0.80 m	<b>174.50 g/t Au</b>	
Taurus Central	22TA-149	<b>8.2</b>	<b>44.9</b>	<b>36.75 m</b>	<b>1.30 g/t Au</b>
		<i>incl.</i> 29.1	34.4	<b>5.29 m</b>	<b>4.09 g/t Au</b>
	22TA-152	<b>157.4</b>	<b>177.6</b>	<b>20.20 m</b>	<b>1.33 g/t Au</b>
<i>incl.</i> 157.4		157.9	0.45 m	<b>25.90 g/t Au</b>	
		<b>279.7</b>	<b>308.8</b>	<b>29.05 m</b>	<b>1.17 g/t Au</b>
Sable	22TA-148	<b>8.7</b>	<b>38.8</b>	<b>30.10 m</b>	<b>1.41 g/t Au</b>
		<i>incl.</i> 8.7	12.4	3.65 m	2.76 g/t Au
		<i>and</i> 21.5	23.9	<b>2.35 m</b>	<b>9.08 g/t Au</b>
		<i>with</i> 23.0	23.4	<b>0.35 m</b>	<b>41.40 g/t Au</b>
		68.9	102.0	<b>33.15 m</b>	<b>0.87 g/t Au</b>
		<i>incl.</i> 68.9	88.3	<b>19.45 m</b>	<b>1.14 g/t Au</b>

\* Drill core lengths are reported here. True widths for these intervals have not been established

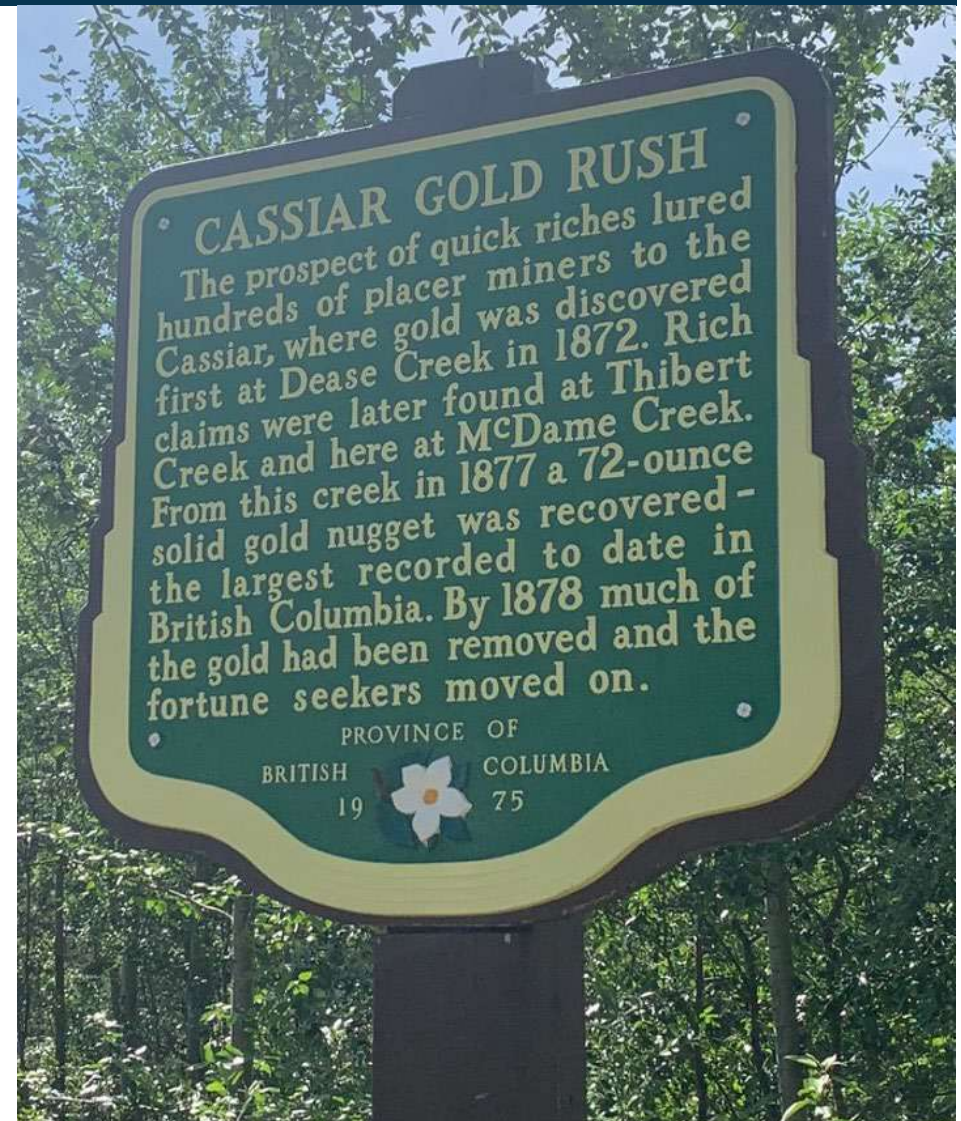
Target Area	Drillhole	From	To	Length*	Grade
Taurus West	22TA-158	<b>337.0</b>	<b>409.2</b>	<b>72.25 m</b>	<b>1.09 g/t Au</b>
		<b>12.3</b>	<b>89.5</b>	<b>77.2 m</b>	<b>0.67 g/t Au</b>
		364.2	388.5	<b>24.3 m</b>	<b>1.13 g/t Au</b>
	22TA-176	<b>10.7</b>	<b>108.7</b>	<b>98.00 m</b>	<b>1.28 g/t Au</b>
		<i>incl.</i> 41.7	45.8	<b>4.10 m</b>	<b>12.02 g/t Au</b>
		<i>with</i> 43.8	45.1	1.30 m	<b>25.87 g/t Au</b>
		<i>incl.</i> 65.0	65.6	0.55 m	<b>17.80 g/t Au</b>
	22TA-178	<b>51.4</b>	<b>103.4</b>	<b>52.00 m</b>	<b>0.60 g/t Au</b>
		<i>incl.</i> 93.0	93.7	0.69 m	<b>14.85 g/t Au</b>
		<b>116.0</b>	<b>186.6</b>	<b>70.65 m</b>	<b>0.76 g/t Au</b>
	<i>incl.</i> 153.5	161.1	<b>7.60 m</b>	<b>2.02 g/t Au</b>	
22TA-180	177.5	249.1	<b>71.6 m</b>	<b>1.54 g/t Au</b>	
	<i>incl.</i> 222.0	245.5	<b>23.5 m</b>	<b>3.68 g/t Au</b>	
	<i>incl.</i> 222.0	223.0	1.0 m	<b>37.40 g/t Au</b>	
	22TA-182	194.7	253.5	<b>58.8 m</b>	<b>1.34 g/t Au</b>
	<i>incl.</i> 240.2	253.0	<b>12.8 m</b>	<b>2.41 g/t Au</b>	
	<i>incl.</i> 250.6	251.2	0.5 m	<b>13.75 g/t Au</b>	
Taurus Southwest	22TA-160	69.0	88.9	<b>19.95 m</b>	<b>0.72 g/t Au</b>
		214.0	234.3	20.35 m	0.51 g/t Au
	<b>22TA-161</b>	<b>8.2</b>	<b>180.1</b>	<b>171.88 m</b>	<b>0.66 g/t Au</b>
	22TA-172	<b>28.0</b>	<b>167.4</b>	<b>139.35 m</b>	<b>0.61 g/t Au</b>
		<i>incl.</i> 48.7	64.1	15.35 m	1.31 g/t Au
		<i>with</i> 61.3	61.9	0.65 m	6.28 g/t Au
	<i>incl.</i> 140.9	141.4	0.55 m	5.17 g/t Au	
22TA-175A	189.0	239.0	<b>50.05 m</b>	<b>0.61 g/t Au</b>	
	<i>incl.</i> 224.7	233.2	8.45 m	1.54 g/t Au	

\* Drill core lengths are reported here. True widths for these intervals have not been established

# The Rich History of the Cassiar Gold District



- 1872 — Discovery of placer gold at Dease Creek started the **gold rush** in the area. 1877 saw a record-breaking **72 oz gold nugget** recovered from McDame Creek.
- 1934 — Discovery of **first gold-bearing quartz veins** followed by ~40 years of only small-scale mining by various operators.
- 1979 — Start of **larger-scale mining operations** at Main, Vollaug, Cusac, Bain (Cassiar South) and Taurus (Cassiar North) mines producing a total of 350Koz gold in total until 1998.
- 1994 — Discovery of **Taurus West** deposit by International Taurus Resources.
- 2008 — **Consolidation of the entire Cassiar gold property** by Hawthorne Gold and advancement of drilling on the property.
- 2011 — Hawthorne subsequently became **Wildsky Resources**, who continued exploration of the Cassiar North and South areas until 2018.
- 2019 — Margaux entered into an agreement to acquire 100% interest in the project.
- 2020 — Margaux exercised its option to fully acquire the project and rebranded to **Cassiar Gold Corp.** Cassiar Gold completed a 5,000 m-drilling program that confirmed the potential to expand the Taurus Deposit.

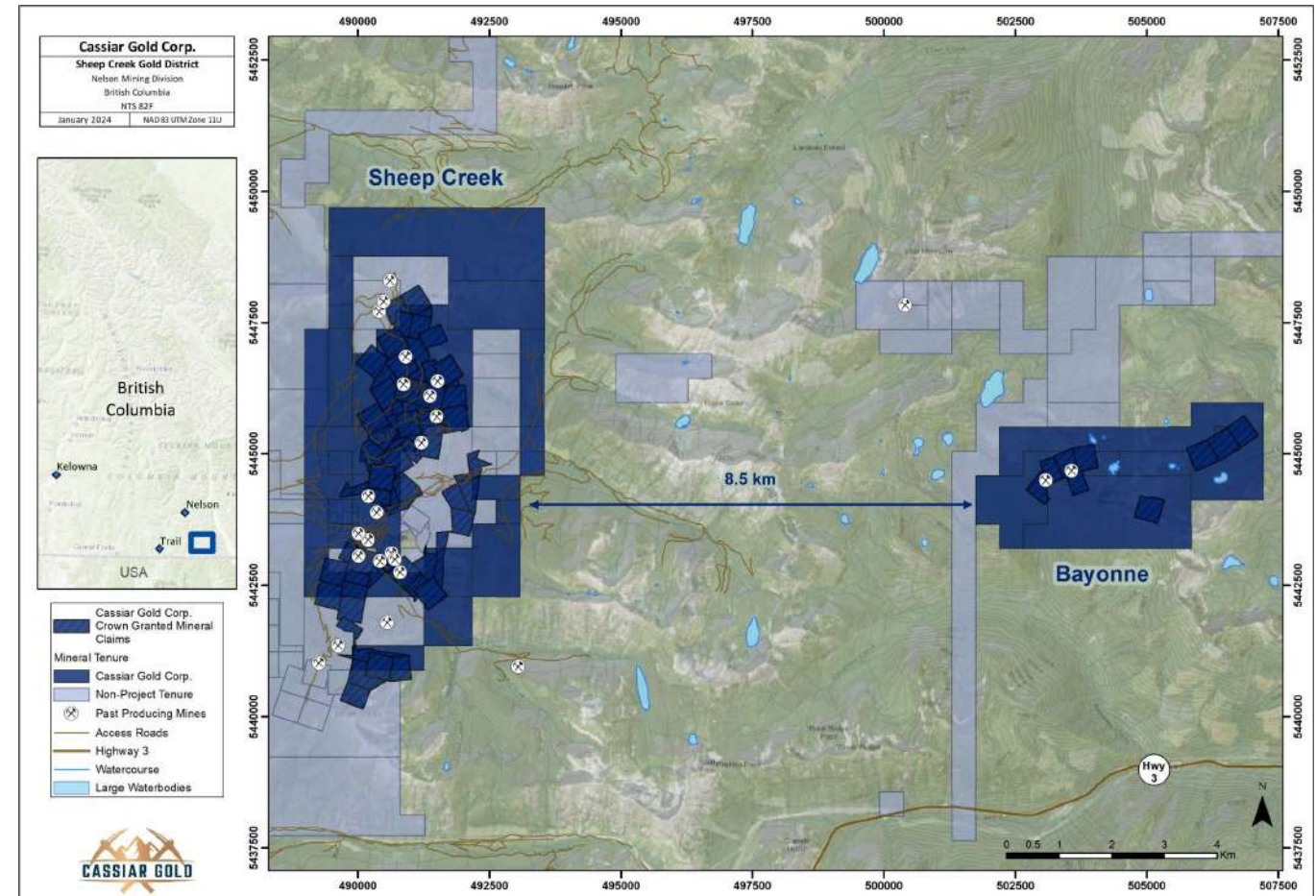




# Sheep Creek: Camp Overview



- 3,872-ha camp consisting of the Sheep Creek and Bayonne properties.
- Third largest past-producing orogenic gold district in BC behind Barkerville and Bralorne.
- Total production from 1900 to 1951 from 1.72 Mt of ore: **742,000 ounces of gold @ 14.7 g/t Au**, ~365,000 ounces of silver, 377,000 lbs. of lead and 312,000 lbs. of zinc.<sup>1</sup>
- Geological analogue to Barkerville and the Cassiar Gold District** – camp hosts 60-70 gold-bearing quartz veins with the potential to carry high-grade gold; little modern exploration conducted since the 1950s.
- Full compilation and review of exploration opportunities and approaches for exploration now underway.



# Sheep Creek: Exploration Potential



## Sheep Creek Property (2,732 ha):

- 10 km belt with 60+ known veins
- Individual veins exploited over 950 m strike length, up to 500 m depth
- Strong structural & stratigraphic control to veining

## Bayonne Property (1,140 ha):

- Veins hosted entirely within granodiorite
- 10 known veins
- Historic production from the Bayonne Main vein and A vein splay (950 m strike, 250 m down dip)

In addition to extensions of known veins and additional parallel veins, there is untested potential for unexposed stacked veins where additional, competent folded units lie below the areas of historical mining, especially in anticlinal hinges.



Sheep Creek Gold Belt Mine



Sheep Creek Veining



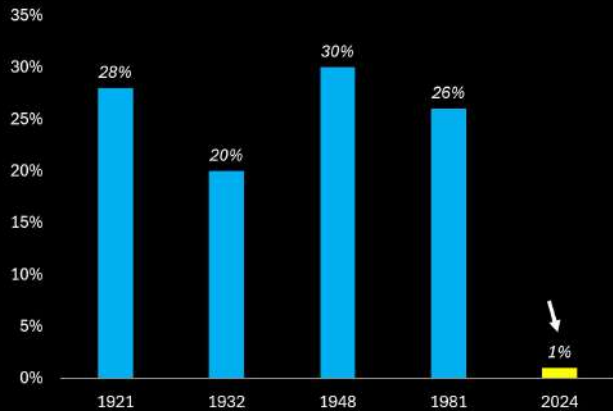
Donnybrook adit, Sheep Creek Project



# A Look at Gold in the Global Market



Gold & Gold Miners as a % of Total Global Assets



Source: Siberjunge.de; Erste Group Research; Lawrence Lepard  
For 2024 Data: Bloomberg; McKinsey & Company; Tavi Costa © 2024 Crescat Capital LLC

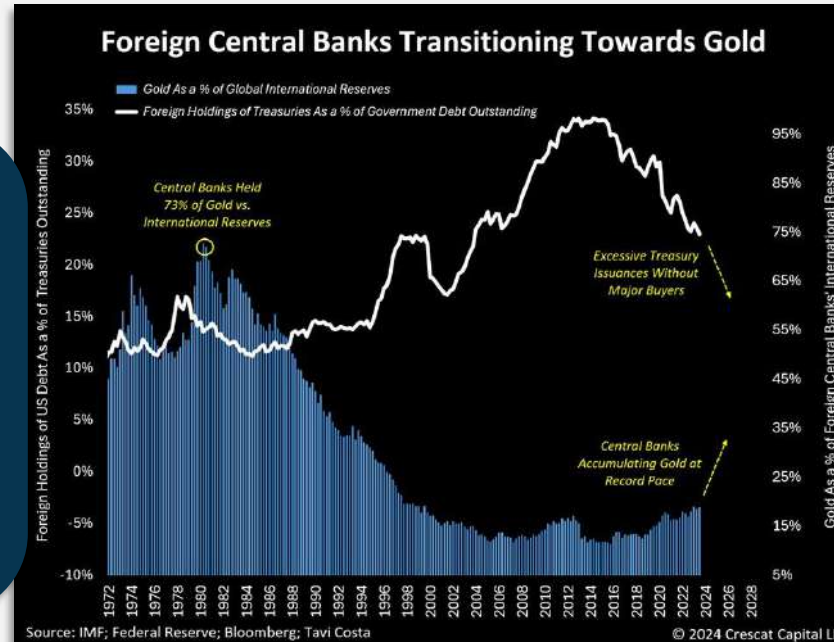
"The multitude of structural forces driving metals has yet, in my opinion, to prompt a major re-rating of the valuations of these businesses, which continue to linger at historically depressed levels."

- Tavi Costa of Crescat Capital

Seeing the trend?

Central banks are transitioning towards Gold at a record pace!

- Tavi Costa of Crescat Capital charts this development



Source: IMF; Federal Reserve; Bloomberg; Tavi Costa © 2024 Crescat Capital LLC



Despite Gold reaching new record highs in 2024, gold miners are still far from their 2011 peaks.

# Recent Canadian M&A



## 2024



Equinox Gold's (EQX-TSX) acquisition of a 40% interest in the Greenstone gold mine for US\$995 M



Calibre Mining's (CXB-TSX) all-share acquisition of Marathon Gold (MOZ-TSX) for C\$345 M



## 2023



Osisko Mining's (OSK-TSX) sale of a 50% interest in the Windfall Gold Project to Gold Fields for C\$634 M



B2Gold's (BTO-TSX, BTG-NYSE) acquisition of Sabina Gold & Silver for C\$1.1 B



## 2022



Agnico's (AEM-TSX/NYSE) acquisition of the remaining 50% interest in the Canadian Malartic Mine + Yamana's Canadian assets for US\$1 B cash + 36 M shares



## 2020



Evolution Mining's (EVN-ASX) acquisition of Newmont's (NEM-NYSE) Red Lake Mine for up to US\$475 M



Kirkland Lake bought Detour Gold for C\$4.9 B



## 2019



St. Barbara's (SBM-ASX) acquisition of Atlantic Gold for C\$722 M



Newcrest's acquisition of a 70% interest in Imperial Metals' (III-TSX) Red Chris Mine for US\$806 M



## 2017



Alamos Gold's (AGI-TSX/NYSE) acquisition of Richmond Mines for US\$770 M





# Capital Structure Breakdown



## Options Schedule

Options Expiry and Price	# Issued
Aug 2025 @ \$0.75	1,150,000
Mar 2026 @ \$0.60	1,690,668
Nov 2026 @ \$0.79	470,000
Sep 2027 @ \$0.66	1,900,000
Sep 2028 @ \$0.345	1,370,000
May 2029 @ \$0.28	1,255,000
<b>Total</b>	<b>7,835,668</b>
<b>Potential proceeds from the exercise of options</b>	<b>C\$4.3M</b>

## Warrant Schedule

Warrant Expiry and Price	# Issued
May 2025 @ \$0.50	764,700
May 2025 @ \$0.70	6,613,335
Jun 2025 @ \$0.70	135,001
Dec 2025 @ \$0.50	7,690,441
May 2026 @ \$0.50	22,770,559
<b>Total</b>	<b>37,974,036</b>
<b>Potential proceeds from the exercise of warrants</b>	<b>C\$20.3M</b>